



safetrust SA200 Sabre Module Touchless Mobile Access Solution for Reader User Guide

[Home](#) » [safetrust](#) » safetrust SA200 Sabre Module Touchless Mobile Access Solution for Reader User Guide 

Contents

- [1 safetrust SA200 Sabre Module Touchless Mobile Access Solution for Reader](#)
- [2 In the box](#)
- [3 What you'll need](#)
- [4 Installation](#)
- [5 Configuration](#)
- [6 Regulatory Information](#)
- [7 Support](#)
- [8 Documents / Resources](#)
 - [8.1 References](#)
- [9 Related Posts](#)



safetrust SA200 Sabre Module Touchless Mobile Access Solution for Reader



In the box



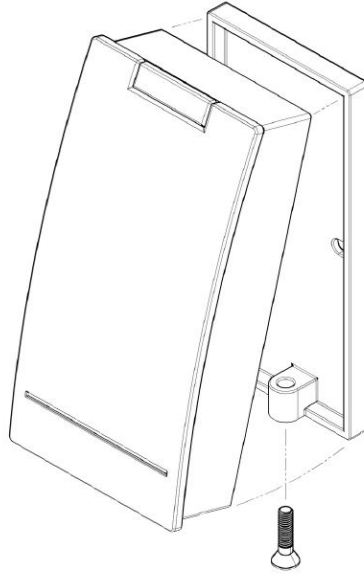
SABRE Module

The SABRE Module is a plug-in installation meaning there is no rewiring necessary.

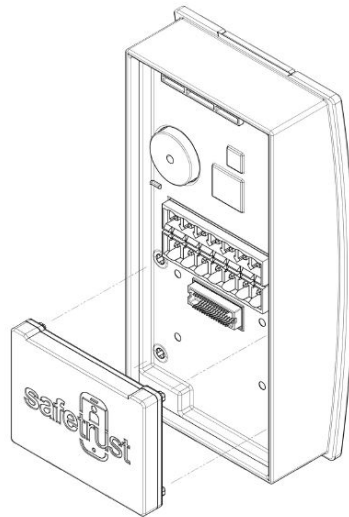
What you'll need

- A few minutes of your time
- Snake eye screw driver to remove security screw from the base of the reader

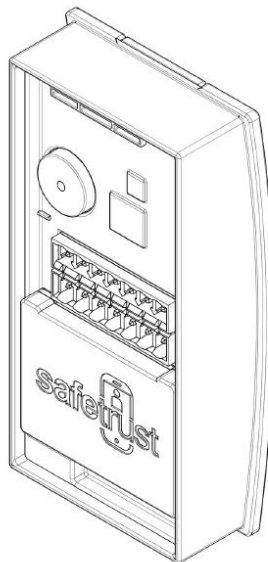
Installation



Remove the mounting screw and pull the reader in an 'out and upward' motion to remove it from the wall mount bracket.



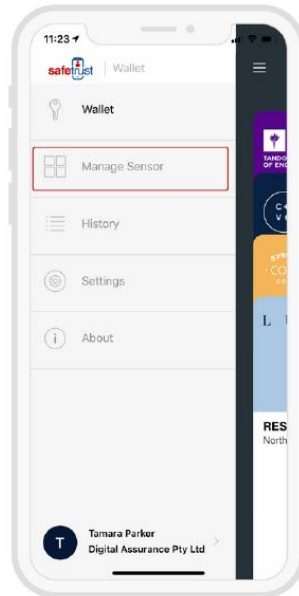
Position the SABRE MODULE onto the reader's connector and press firmly to make a solid connection. (Note that the reader's connector is below the wiring —pictured above as a terminal strip but the wiring may alternatively be pigtail.)



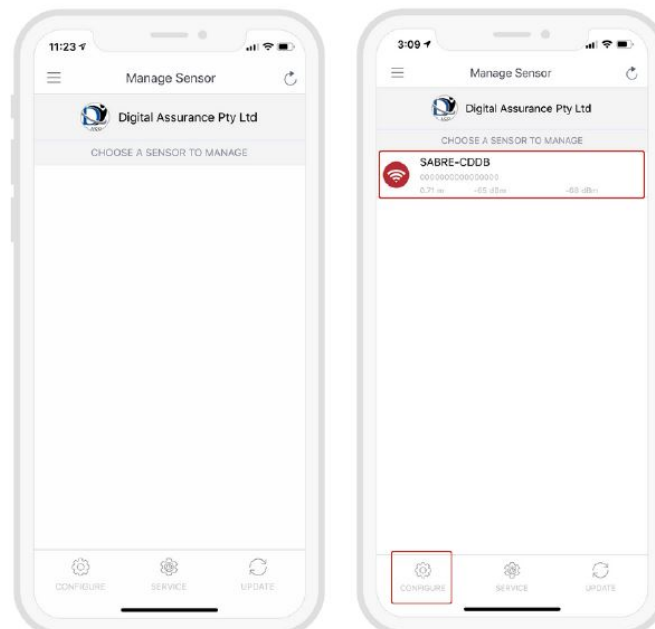
Once a firm connection is made between the MODULE and the connector, the MODULE will receive power and will be operational within 5 seconds.

Note: Install of the SABRE Module will generate a reboot of the HID Reader and the SABRE Module. You will notice a series of beeps, from the HID Reader when the SABRE module reboots.

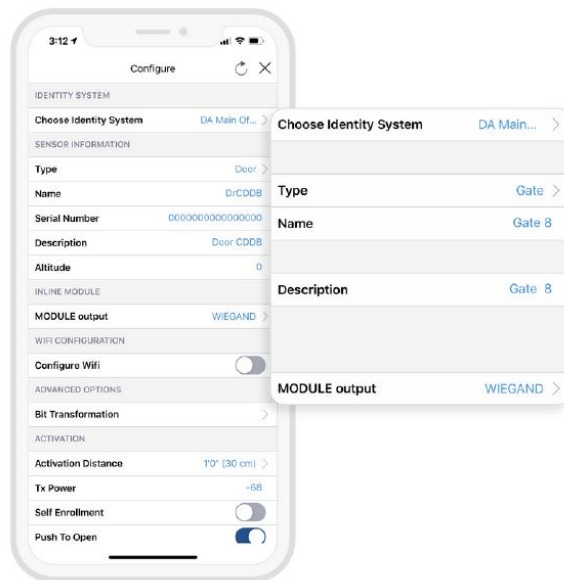
Configuration



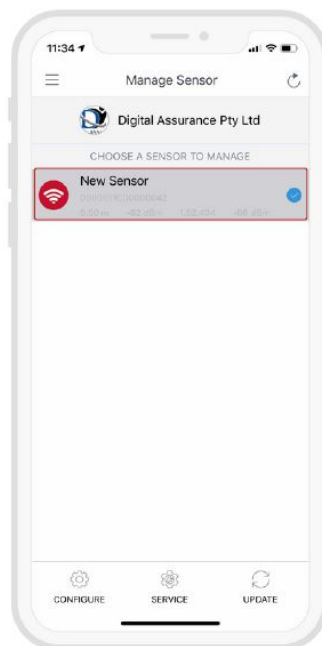
Open the Safetrust Wallet APP and select Manage Sensor tab. Make sure your system admin has set you up with this role.



With the Admin Installer tab open from the App, bring the phone in range of the SABRE Module and once visible from the App, highlight and select "Configure".



- Choose an Identity System.
- Specify the Type of access from the dropdown (eg. Door, Gate etc.)
- Assign a short Name and Description using alphanumeric characters.
- Choose an Output for the sensor (the default is set to Wiegand).



When the Module information is saved successfully to Credential Manager and assigned to the Identity System, the new description will appear in the Manage Sensor tab with a unique serial number assigned.

Regulatory Information

FCC: This device complies with part 15 of the FCC Rules. Operation is subject to the following two conditions: (1) This device may not cause harmful interference, and (2) this device must accept any interference received, including interference that may cause undesired operation.

Canada Radio Certification: This device complies with Industry Canada license-exempt RSS standard(s). Operation is subject to the following two conditions: (1) this device may not cause interference, and (2) this device must accept any interference, including interference that may cause undesired operation of the device.

CE Marking: Safetrust hereby declares that these proximity readers are in compliance with the essential requirements and other relevant provisions of Directive 1999/5/EC.

Support

Thank you for purchasing the Safetrust SABRE Module.


If for any reason you need assistance with your installation, please contact your local Sales representative.

Sincerely –

The Safetrust Team

www.safetrust.com/support

Documents / Resources

	<p>safetrust SA200 Sabre Module Touchless Mobile Access Solution for Reader [pdf] User Guide</p> <p>DAE3oS YsXA, BAB78490suM, 8830-000, SA200 Sabre Module, Touchless Mobile Access Solution for Reader, SA200 Sabre Module Touchless Mobile Access Solution for Reader</p>
---	---

References

- [Safetrust Inc - Touchless Identity Solutions](#)
- [Safetrust Inc - Touchless Identity Solutions](#)

Manuals+