



SafeGuard RF3.1 and RF4.1 Cordless Sensor Light Instruction Manual

[Home](#) » [SAFE GUARD](#) » SafeGuard RF3.1 and RF4.1 Cordless Sensor Light Instruction Manual 

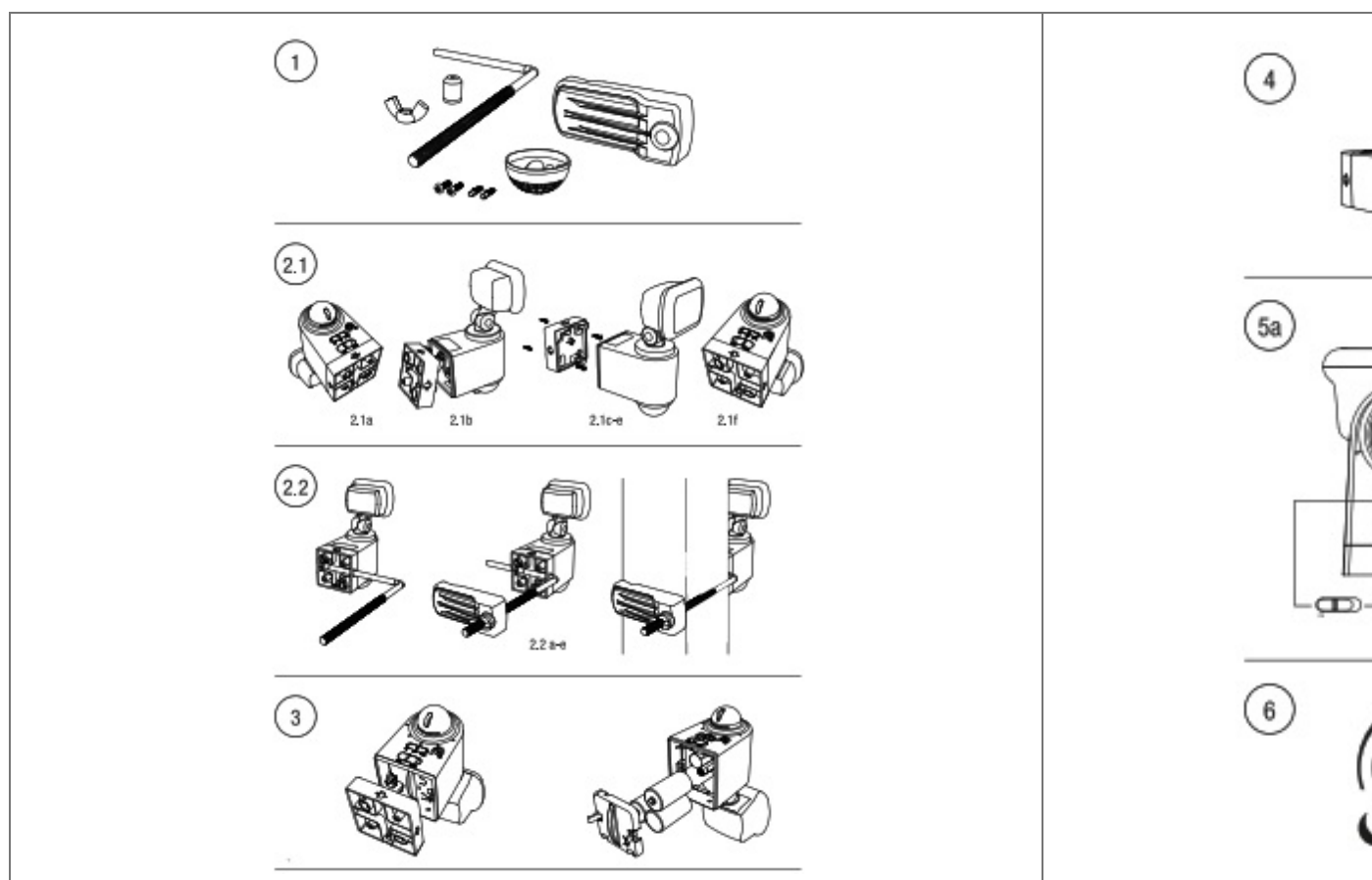


Instruction Manual RF3.1 and RF4.1

Contents

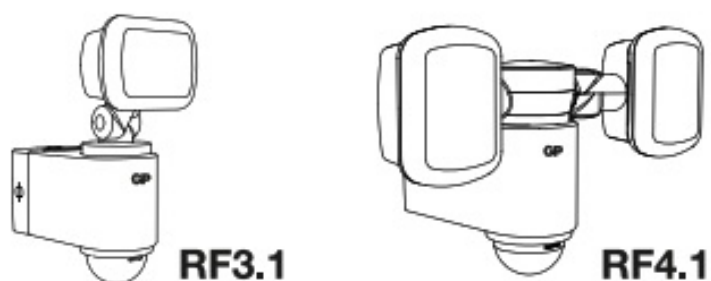
- [1 RF3.1 and RF4.1 Cordless Sensor Light](#)
- [2 Intended Use of Product](#)
- [3 Specification](#)
- [4 Product Features](#)
- [5 Package Includes](#)
- [6 Product Installation](#)
- [7 Battery Installation](#)
- [8 Light Sensitivity](#)
- [9 Safety Instructions](#)
- [10 Maintenance and Repair](#)
- [11 Documents / Resources](#)
- [12 Related Posts](#)

RF3.1 and RF4.1 Cordless Sensor Light



Intended Use of Product

Please read the full instructions before operating the product. This product is to be used as a cordless motion sensor safety light as directed by the instructions.



Specification

Operating voltage	4.5 V	4.5 V
Maximum wattage	3 W	6 W
Batteries	3 x C	3 x C
Lumens	130 lm	260 lm
Operating temperature	-20°C to +50°C	-20°C to +50°C
IP rating	IP 55	IP 55
Sensor	Automatic motion & Photo sensor detection	Automatic motion & Photo sensor detection
Sensor detection range	8 meters & 110 degrees	8 meters & 110 degrees
Light modes	On / Off / Auto	On / Off / Auto
Detection time	Auto mode: 10 seconds	Auto mode: 10 seconds

Product Features

- Cordless safety and security LED sensor light
- Battery operated
- Quick release button for easy battery replacement
- Simple and quick to install
- Horizontal and vertical light adjustment
- Multi-mounting options
- Adjustable sensor angle
- For use indoors and outdoors

Package Includes

- GP SafeGuard cordless sensor light
- 3 x GP14AU 1.5V Ultra Alkaline battery
- Accessories for installation L-bar, end clamp, sensor masks, screws, raw plugs, L-bar cap and wing nut

Product Installation

2.1 Method 1: Permanent installation

- 2.1 a Push the lock button to the "OPEN" position on the SafeGuard.
- 2.1 b Detach the wall mounting plate from the base of the SafeGuard.
- 2.1 c Use the wall mounting plate as a template and mark the location for the screws.
- 2.1d Drill holes and insert the raw plugs (if necessary). Attach the wall mounting plate with the screws.
- 2.1e Reattach the SafeGuard on the mounting plate.
- 2.1f Push the lock button to the "CLOSE" position.

2.2 Method 2: Removable installation when Method 1 is not feasible

- 2.2a Insert the L-bar in the SafeGuard base.
- 2.2b Place the SafeGuard on a beam or similar object.
- 2.2c Insert the end clamp through the L-bar and tighten the wing nut to secure the SafeGuard.
- 2.2d Push L-bar cap on the end of the L-bar.
- 2.2e The beam thickness must be a minimum of 4.5cm.

Battery Installation

4 Angle Adjustments

5 Operating Instructions

5a Light Modes

ON: SafeGuard turned on permanently

OFF: SafeGuard turned off

AUTO: SafeGuard activates when movement is detected from dusk till dawn. Switches on for approx. 10 seconds unless it continues to detect movement

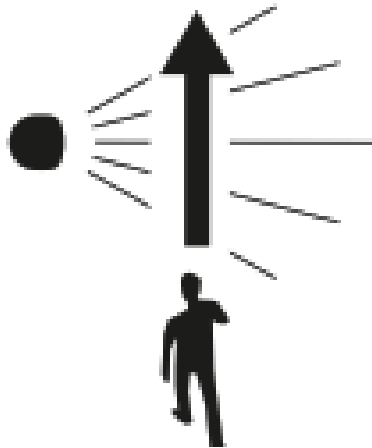
5b Sensor Detection Area

can be reduced by covering the sensor with a sensor mask.

Light Sensitivity

The built-in dusk to dawn sensor can be set to suit your preference. By turning it to the Moon icon the light will operate in the darker environment or it can be set to the Sun icon which results in operating more in lit-up areas or during the day. It can be also adjusted anywhere between these two points.

Attention



1. PIR sensors detect changes in infrared light (heat) therefore the surrounding temperature can affect the sensor's responsiveness.
2. Placing the SafeGuard too close to strong ambient light may affect the sensor's response.
3. The SafeGuard is most sensitive when people cross its sensor's detection area.

Safety Instructions

Keep products in safe locations away from children. Do not swallow small parts. This product is not suitable for children and the instructions should be followed carefully to avoid Injury.

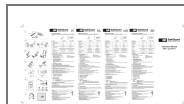
1. Do not use in explosive atmospheres or other areas where there may be volatile gases.
2. Do not immerse, incinerate or disassemble the product.
3. Do not short circuit the product In any way.

Maintenance and Repair

1. Do not attempt to modify or repair the product. All repairs must be carried out by authorized personnel.

2. Use the correct batteries for the product. Never use alkaline / non-rechargeable batteries and rechargeable batteries together.
3. Store batteries out of the reach of children.
4. Never expose batteries to temperatures over 60°C (e.g. direct sunlight or to open fire).
5. Do not short-circuit batteries.
6. Do not use new batteries with partially used or discharged batteries.
7. If the product is not being used for an extended period of time please remove the batteries from the device.
8. Dispose of batteries according to national guidelines.

Documents / Resources



[SafeGuard RF3.1 and RF4.1 Cordless Sensor Light](#) [pdf] Instruction Manual
RF3.1 and RF4.1 Cordless Sensor Light, RF3.1 and RF4.1, Cordless Sensor Light, RF3.1 Cordless Sensor Light, RF4.1 Cordless Sensor Light, Sensor Light, Cordless Light, Light