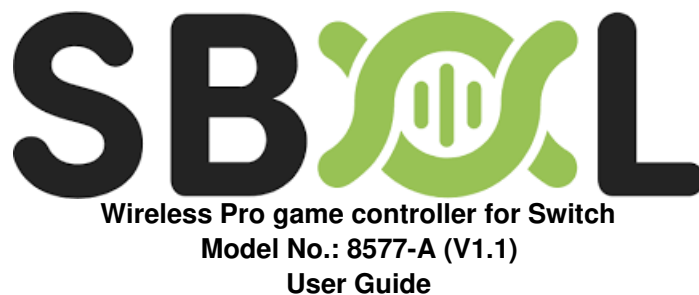




## S-BOL Wireless Pro Game Controller for Switch 8577-A User Guide

[Home](#) » [S-BOL](#) » S-BOL Wireless Pro Game Controller for Switch 8577-A User Guide 



### Contents

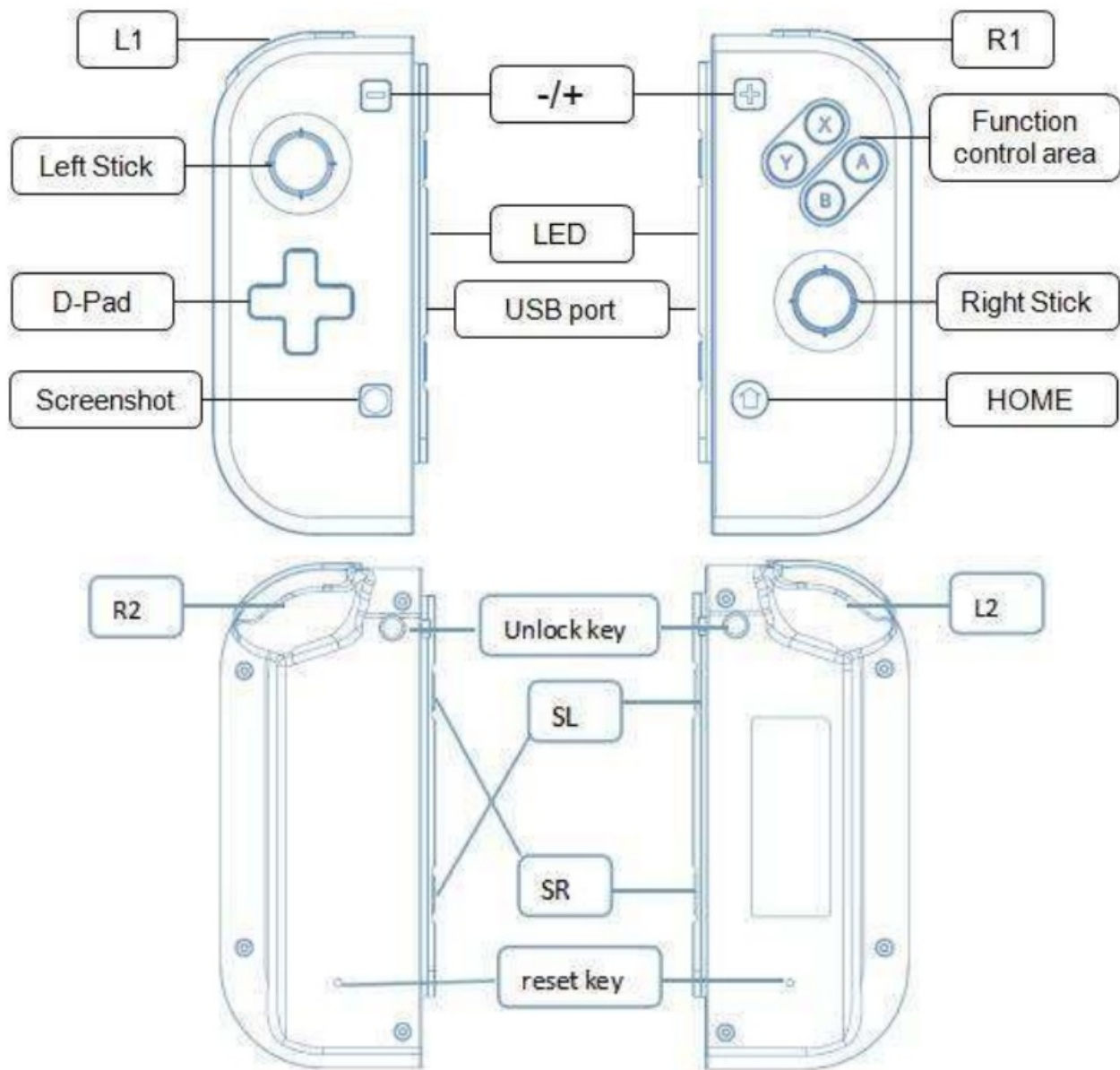
- [1 Preface](#)
- [2 Controller diagram](#)
- [3 Controller features](#)
- [4 Key brief description](#)
- [5 Connecting instruction](#)
- [6 Documents / Resources](#)
- [7 Related Posts](#)

### Preface

- Thank you for choosing our product. For bringing you with pleasant gaming experience, please read this user guide and all safety instructions carefully to ensure safe and proper use.
- The instructions in this user guide are based on the default settings of the device.
- All pictures, statements, and text information in this guide are for references only, actual product prevails; Updates are subject to change without prior notice and it will be edited in a new version guide, we reserve the right of final interpretation.
- Available functions and additional services may vary due to different devices, software, or service providers.
- Official software updates or source code changes or other irresistible factors may cause some games can't be

operated with this product, our company won't take any responsibility for it and we reserve the right of final interpretation.

## Controller diagram



## Controller features

1. This pair of controllers are compatible with the Switch console and only supports wireless connections.
2. It can be used as an entire controller also can be used as two independent controllers.
3. No need to install any driver, it can be used once connected to the Switch console.
4. One-key connecting method for ease of handling.
5. Wireless connection, lower interference, and stable connecting signal.
6. Built-in with a 300mAh polymer lithium battery, it can be continuously used for around 4h after fully charged.
7. It supports motion sensing function via built-in Gyro in each controller.
8. It supports vibration function via a built-in motor in each controller.
9. Multiplayer games can be played by connecting more wireless controllers simultaneously to a Switch console.
10. Ergonomic design and lightweight construction make it comfortable even for long hours of continuous gaming.
11. It can be upgraded by updating software through a USB cable connecting to a PC.

## Key brief description

1. HOME key: Power controller on or execute commands from a Switch console.
2. D-Pad: Up, down, left, and right. It can be easily operated in eight directions; it acts as a set of function control keys when using a Left Controller as an independent controller.
3. Function control keys: A, B, X, Y. Perfect key design, sensitive and quick for finger operation.
4. Left stick and Right stick: Neoteric 3D stick can be operated precisely at 360° all-round.
5. Functional keys: L1, R1, L2, R2. Trigger and shoulder keys perform quick response functions.
6. Screenshot key: Take screenshot and store; it acts as “HOME” key when using a Left Controller as an independent controller.
7. Reset key: Short press this key in the reset hole to power the controller off to disconnect the controller from the console.
8. Unlock key: Left unlock key and right unlock key. Press and hold both unlock keys simultaneously to release the Switch console.

## Connecting instruction

### Connecting to a Switch console for the first time

Power a Switch console on, on the main interface of the console, click (by using your finger) “Controllers” → “Change Grip/Order” to come to this pairing pattern interface “Press L + R on the controller”, ignore “L + R”, then operate controller according to the following steps as below:

**Note:** Please pair and connect each controller at this pairing pattern interface of a Switch console.

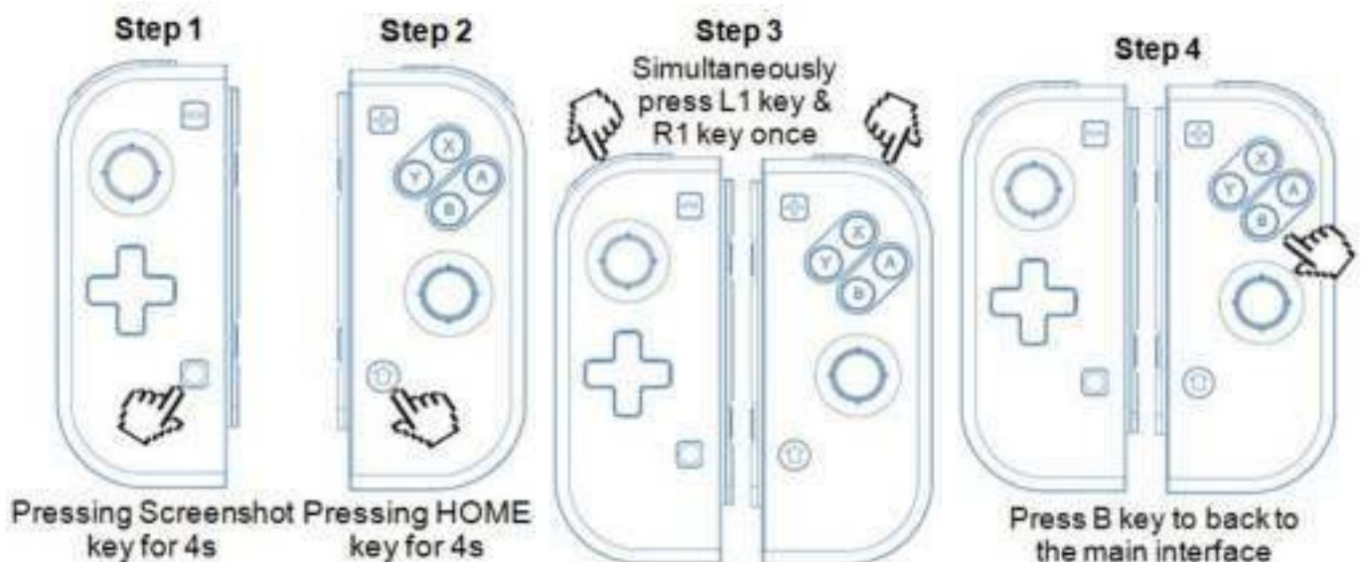
### A. Connecting a pair of controllers (A Left Controller plus a Right Controller) as an Entire Controller

Step 1: Press the “screenshot” key and hold for 4s to power a Left Controller on, four LEDs start blinking slowly then blinking quickly to enter searching status after 4s when one (or more) of the LEDs is solid bright, it means that the controller is paired with the console successfully.

Step 2: Press the “HOME” key and hold for 4s to power a Right Controller on, four LEDs start blinking slowly then blinking quickly to enter searching status after 4s when one (or more) of the LEDs is solid bright, it means that the controller is paired with the console successfully.

Step 3: After both controllers are paired with the console successfully, press the “L1” key plus the “R1” key simultaneously once, the corresponding LED(s) will be solid bright in each of both controllers, which means that an Entire Controller (a Left Controller + a Right Controller) is connected to the console successfully and ready to be used.

Step 4: Press the “B” key to back to the main interface of the console.

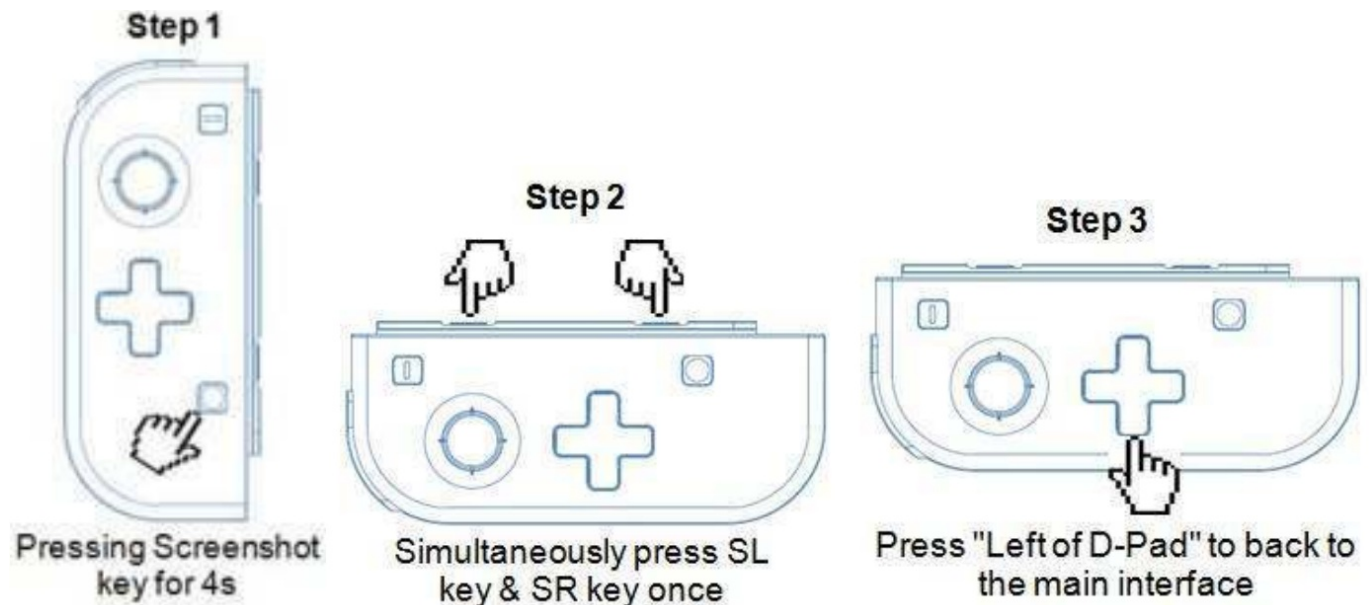


## B. Connecting a Left Controller as an independent controller

Step 1: Press the “screenshot” key and hold for 4s to power a Left Controller on, four LEDs start blinking slowly then blinking quickly to enter searching status after 4s, when one (or more) of the LEDs is solid bright, it means that the controller is paired with the console successfully.

Step 2: Press the “SL” key plus the “SR” key simultaneously once, the corresponding LED(s) will be solid bright in the Left Controller means that the Left Controller as an independent controller is connected to the console successfully and ready to be used.

Step 3: Press the “left of D-Pad” key to back to the main interface of the console.

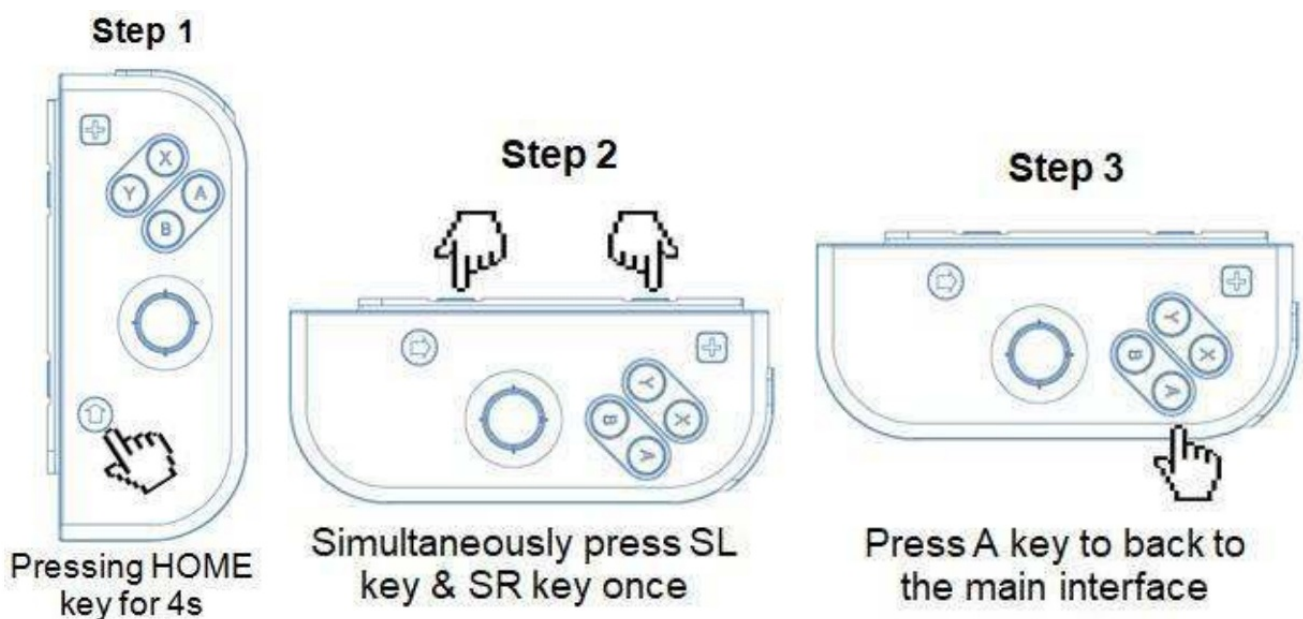


## C. Connecting a Right Controller as an independent controller

Step 1: Press the “HOME” key and hold for 4s to power a Right Controller on, four LEDs start blinking slowly then blinking quickly to enter searching status after 4s when one (or more) of the LEDs is solid bright, it means that the controller is paired with the console successfully;

Step 2: Press the “SL” key plus the “SR” key simultaneously once, the corresponding LED(s) will be solid bright in the Right Controller, which means that the Right Controller as an independent controller is connected to the console successfully and ready to be used.

Step 3: Press the “A” key to back to the main interface of the console.



## Connecting to a paired Switch console

A. An Entire Controller (a Left Controller + a Right Controller): Short press the “HOME” key for 1s to power an

Entire Controller on, the controller will be connected to the console automatically again.

B. An independent Left Controller: Short press the "Screenshot" key for 1s to power a Left Controller on, the controller will be connected to the console automatically again.

C. An independent Right Controller: Short press "HOME" key for 1s to power a Right Controller on, the controller will be connected to the console automatically again.

### **Connecting controller back to the Switch console**

1. If a controller is in sleeping mode, short press the "HOME" key or "Screenshot" key to wake it up, it will be connected to the console again automatically.
2. If a Switch console is in sleeping mode, first press the power button of the console to wake the console up then short press "HOME" or "Screenshot" key of the controller to connect the controller back to the console (If a Switch console is in sleeping mode, the console can't be woken up by directly pressing any key of the controller.).

**Note:** This pair of controllers is neither with NFC function nor with camera function. Built-in motors are none HD motors, vibration experiences might be different in some games. Games that need camera function and HD motor vibration function can't be played normally, such as Baby, Ball Count, Eating Contest, etc.

### **LED indication instruction**

1. Four LEDs blinking quickly and circularly: This controller is searching for wireless devices to be paired.
2. LED(s) solid bright: This controller is connecting to the console normally via wireless.
3. LED(s) blinking quickly: This controller battery voltage is lower than 3.6V; if the voltage is lower than 3.4V, the controller will be shut off automatically and can't be powered on.
4. Four LEDs blinking slowly: This controller is being charged via connecting to a charger, four LEDs will be off after fully charged.


### **Controller parameter reference**

Item	Reference value
Operating voltage	DC 3.7V-4.2V
Operating current	20-30mA
Static current	10-80uA
Vibrating current	80-150mA
USB input voltage/current	DC 5V/500mA
Available distance	≤8m
Battery voltage/capacity	3.7V/300mAh
Controller power-on time	Around 4h (fully charged)
Charging time	Around 2h
Static time	Around 25 days
Net weight	A pair of controllers: 80g (102g including a charging cable and a user guide)
Dimension	A single controller: 44*28*102.6mm
Packing list	A pair of controllers, a charging cable, and a user guide
Remark: The above parameters are for references only, they are subject to the actual product.	

## Precautions

1. Please don't store this product in damp or high-temperature places;
2. Do not knock, beat, pierce or try to disintegrate this product so as not to damage it unnecessarily;
3. Don't discard it with garbage as this product is with a lithium battery built-in;
4. Don't use this product near fire or heat sources;
5. Unauthorized or non-professional personnel are not allowed to disassemble this product, otherwise, it won't be in the scope of an after-sales warranty.

## Documents / Resources

	<p><a href="#">S-BOL Wireless Pro Game Controller for Switch 8577-A</a> [pdf] User Guide</p> <p>S-BOL, Wireless, Pro, game controller, for, Switch, 8577-A</p>
---	--