



RYNOSKIN RSSS-JK0201 DS7 II Python Side Steps Installation Guide

[Home](#) » [RYNOSKIN](#) » RYNOSKIN RSSS-JK0201 DS7 II Python Side Steps Installation Guide 

Contents

- [1 RYNOSKIN RSSS-JK0201 DS7 II Python Side Steps](#)
- [2 Torque & Tools](#)
- [3 BEFORE INSTALLATION](#)
- [4 Part List](#)
- [5 Documents / Resources](#)
 - [5.1 References](#)
- [6 Related Posts](#)



RYNOSKIN RSSS-JK0201 DS7 II Python Side Steps



Torque & Tools





90-180 min



Cutting Not Required



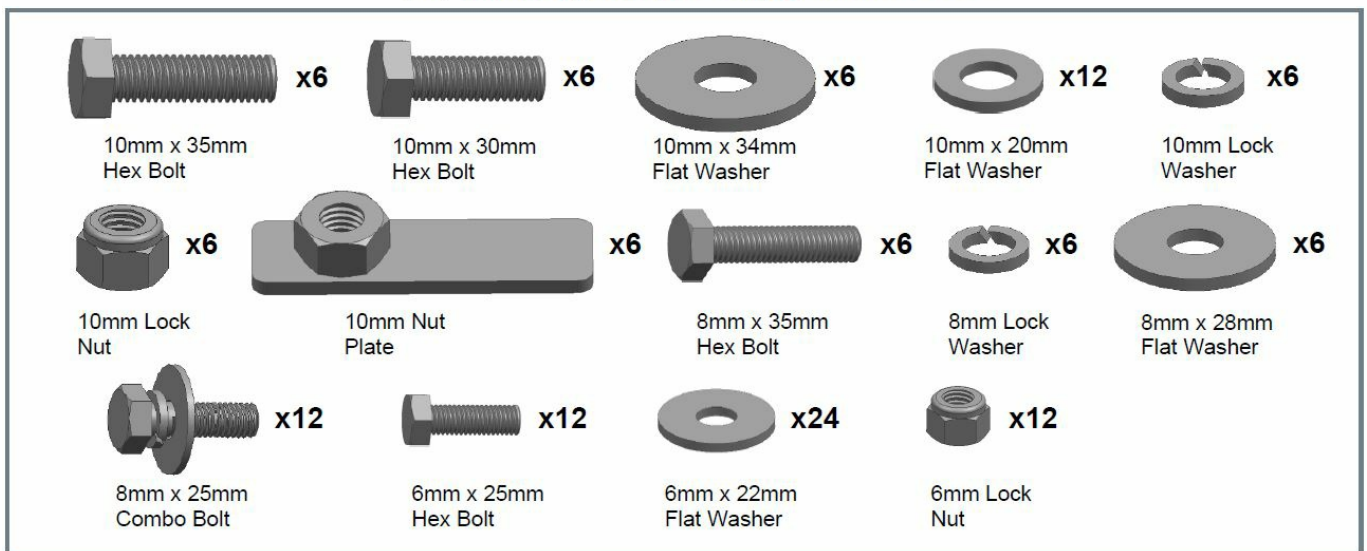
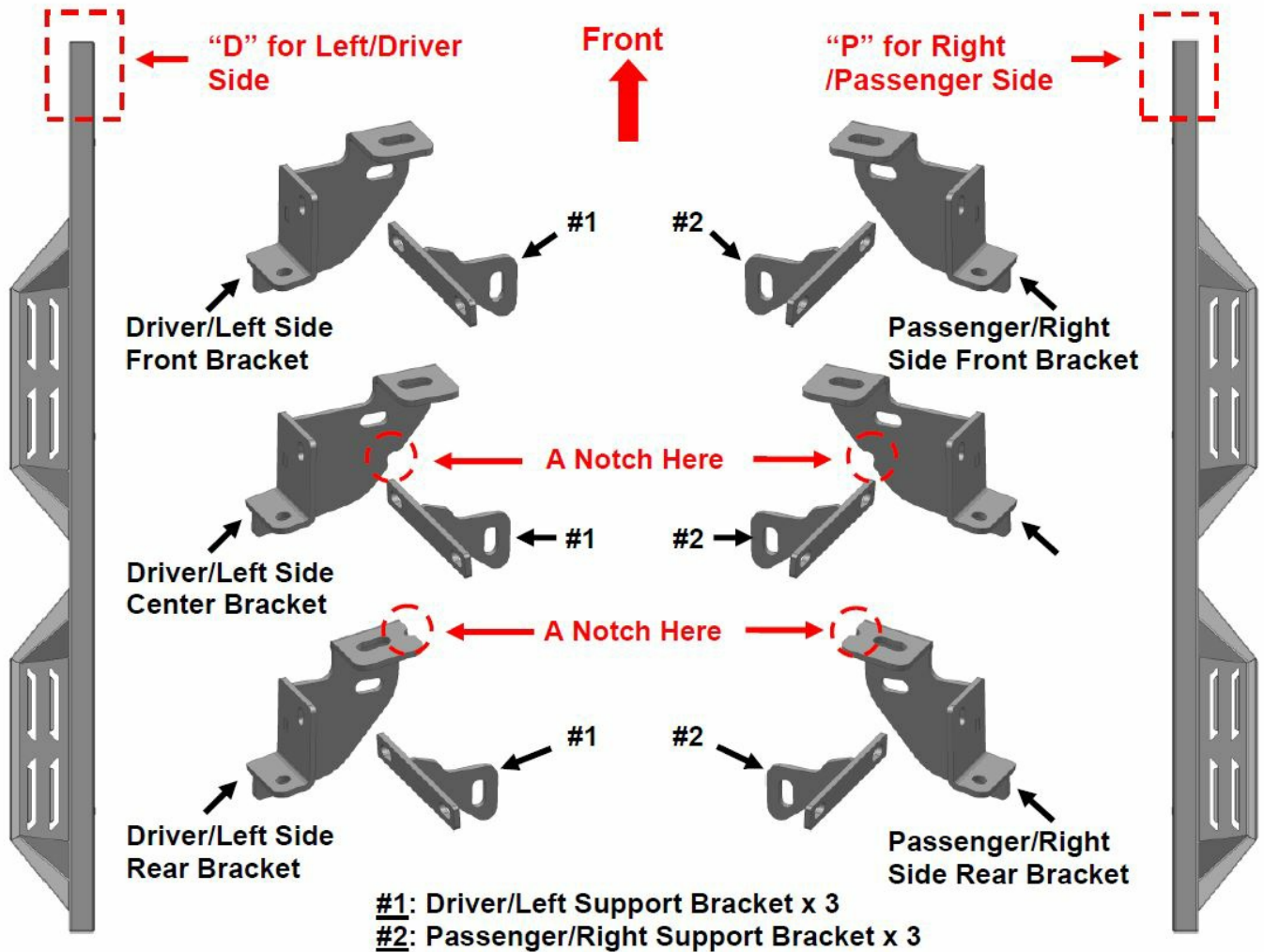
Drilling Not Required

Fastener Size	Tightening Torque (ft-lbs)	Wrench Required		Allen Wrench Required	
<input checked="" type="checkbox"/> 6mm	<input checked="" type="checkbox"/> 7-8.5		<input checked="" type="checkbox"/> 10mm		<input type="checkbox"/> 4mm
<input checked="" type="checkbox"/> 8mm	<input checked="" type="checkbox"/> 18-20		<input checked="" type="checkbox"/> 13mm		<input type="checkbox"/> 5mm
<input checked="" type="checkbox"/> 10mm	<input checked="" type="checkbox"/> 35-40		<input checked="" type="checkbox"/> 16mm		<input type="checkbox"/> 6mm
<input type="checkbox"/> 12mm	<input type="checkbox"/> 60-70		<input type="checkbox"/> 18mm		<input type="checkbox"/> 8mm

BEFORE INSTALLATION

REMOVE CONTENTS FROM THE BOX. VERIFY ALL PARTS ARE PRESENT DEPENDING ON THE PARTS LIST. READ INSTRUCTIONS CAREFULLY. CUTTING MAY BE REQUIRED. ASSISTANCE IS RECOMMENDED.

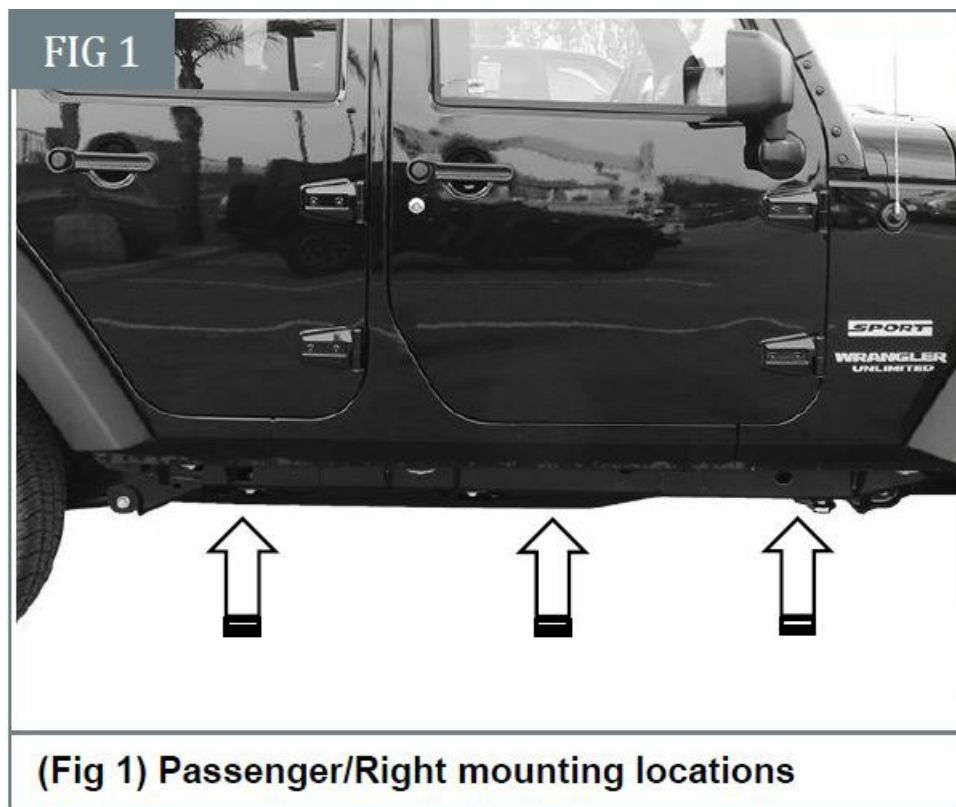
Part List



PLEASE NOTE THAT THE FOLLOWING PICTURES ARE BASED ON THE PASSENGER-SIDE INSTALLATION

STEP 1

Start installation toward the front of the Passenger/Right side of the vehicle, Locate the front, center, and rear mounting locations (Fig 1).

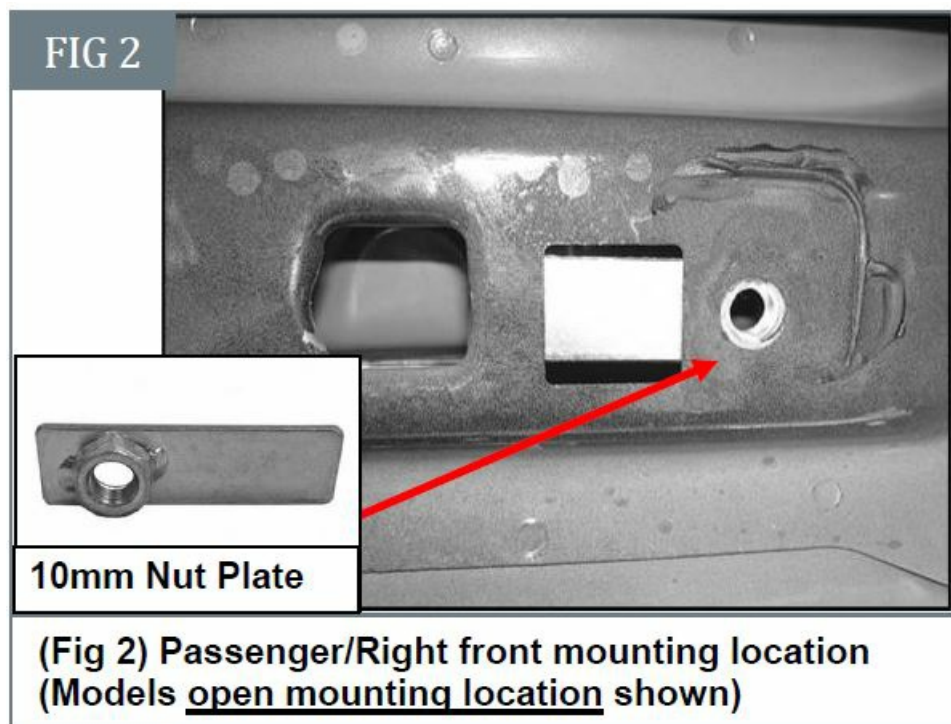


STEP 2

Determine if the vehicle has an open floor panel or a threaded hole in the floor panel

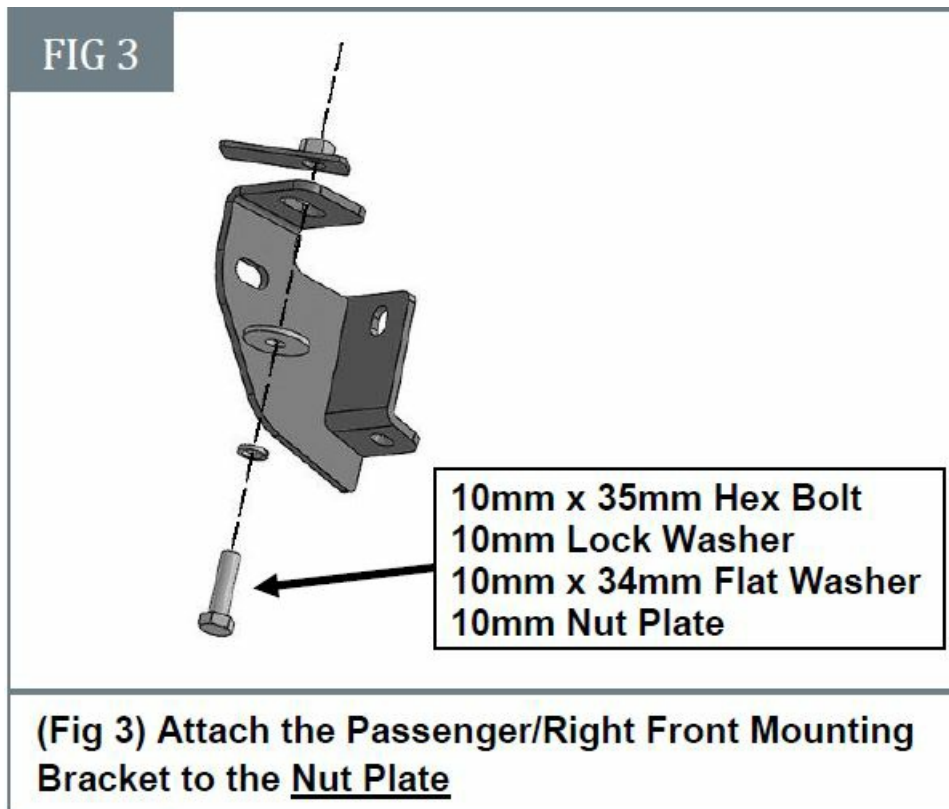
1. Vehicles with open mounting location:

- a. Insert (1) 10mm Nut Plate into the large square opening in the floor panel. Line up the threaded nut with the hole in between the pair of holes on the pinch weld, (Fig 2).



- b. Select the Passenger/Right Front Mounting Bracket. NOTE: There is a small notch at the Bottom of the Center Brackets and the notch of Rear Brackets is at the Top. Please identify the Front, Center, and Rear Brackets according to the Part List.
- c. Attach the Bracket to the Nut Plate with (1) 10mm x 35mm Hex Bolt, (1) 10mm Lock Washer, and (1) 10mm

x 34mm Flat Washer, (Fig 3). Do not tighten the hardware.



2. Vehicles with factory threaded holes in floor panels:

- a. Select the Passenger/Right Front Mounting Bracket. Attach the Bracket to the front mounting location (Fig 4) with (1) 8mm Hex Bolt, (1) 8mm Lock Washer, and (1) 8mm Flat Washer, (Fig 5). Do not tighten the hardware.

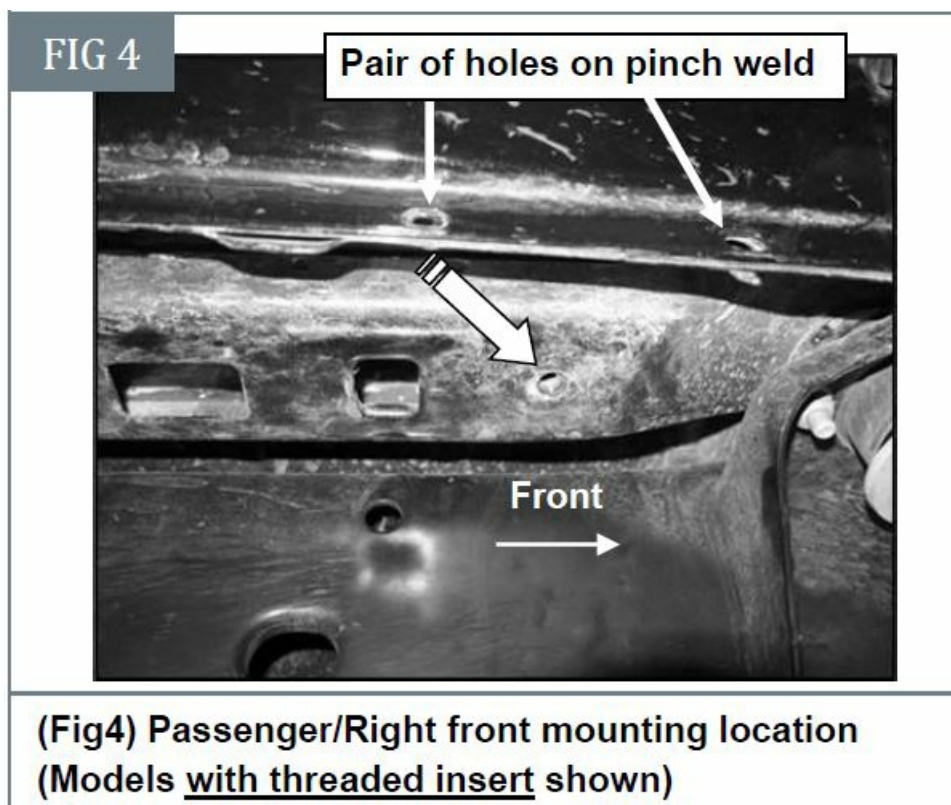
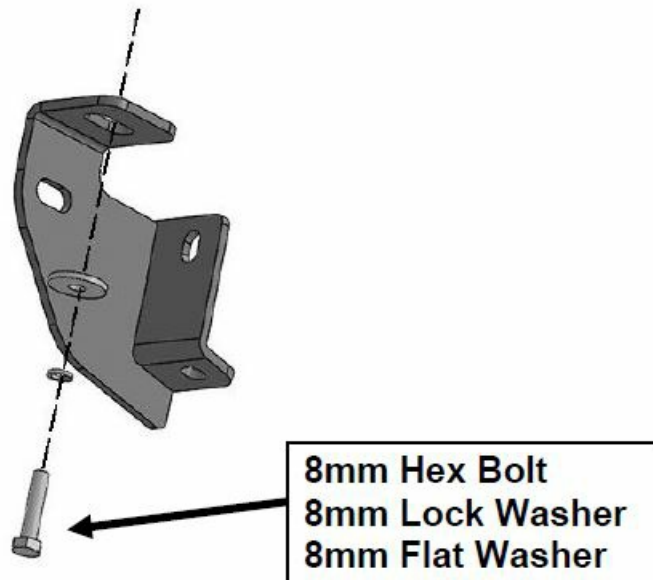


FIG 5

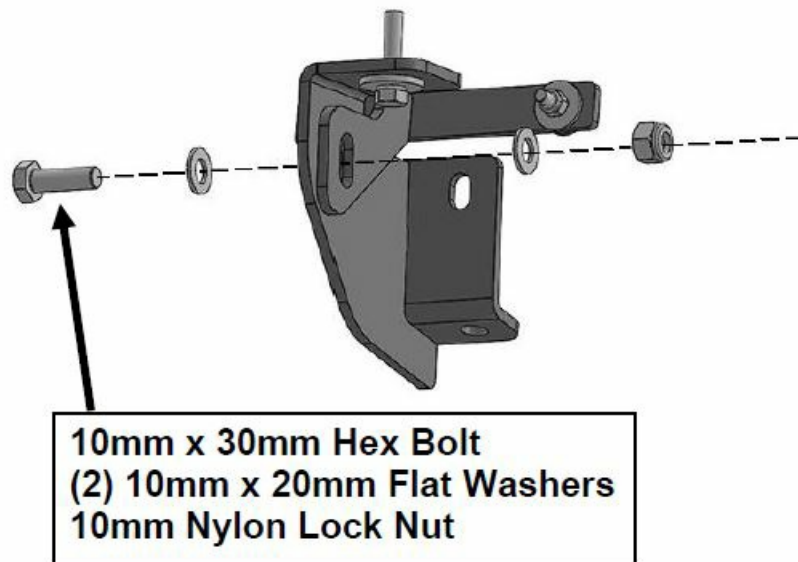


(Fig5) Attach the Passenger/Right Front Mounting Bracket to the Threaded Hole

STEP 4

Attach the Support Bracket to the Mounting Bracket with (1) 10mm x 30mm Hex Bolt, (2) 10mm x 20mm Flat Washers, and (1) 10mm Nylon Lock Nut, (Fig 7). Do not tighten the hardware.

FIG 7



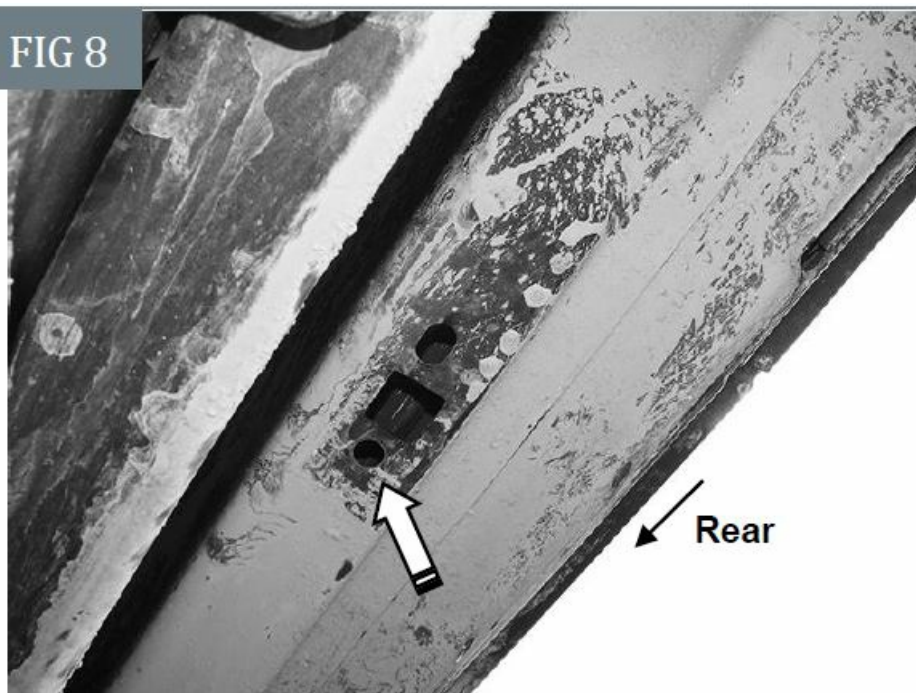
(Fig 7) Attach (1) Passenger/Right Support Bracket (#2) to the Front Mounting Bracket

STEP 5

Repeat Steps 2 – 4 to attach the Passenger/Right Center and Rear Mounting Brackets and Support Brackets to the center and rear locations, (Figs 8- 9). NOTE: There is a small notch at the Bottom of the Center Brackets and the notch of Rear Brackets is at the Top. Please identify the Center and Rear Brackets according to this, (Fig 10).

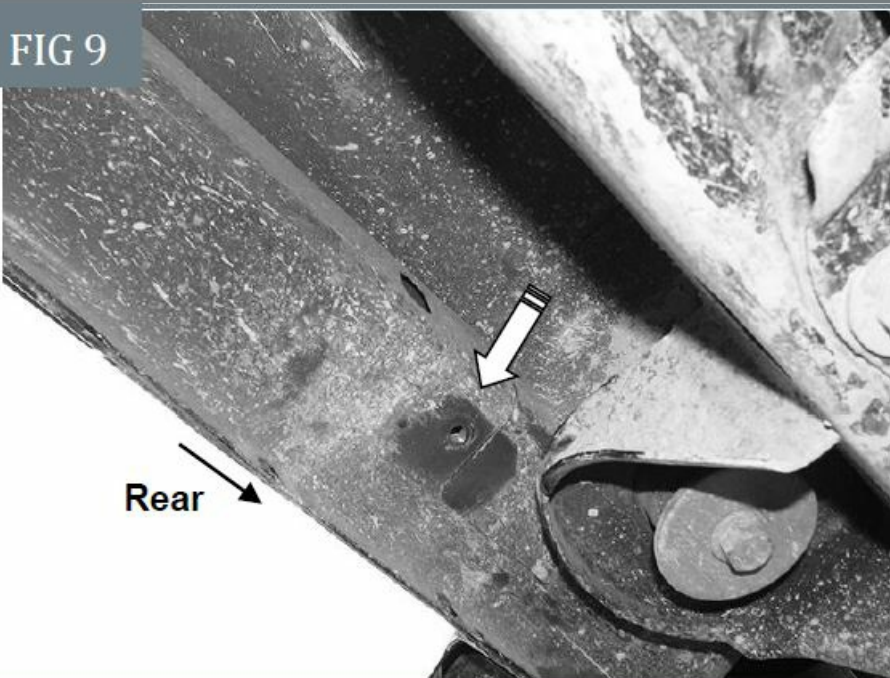
Do not tighten the hardware.

FIG 8

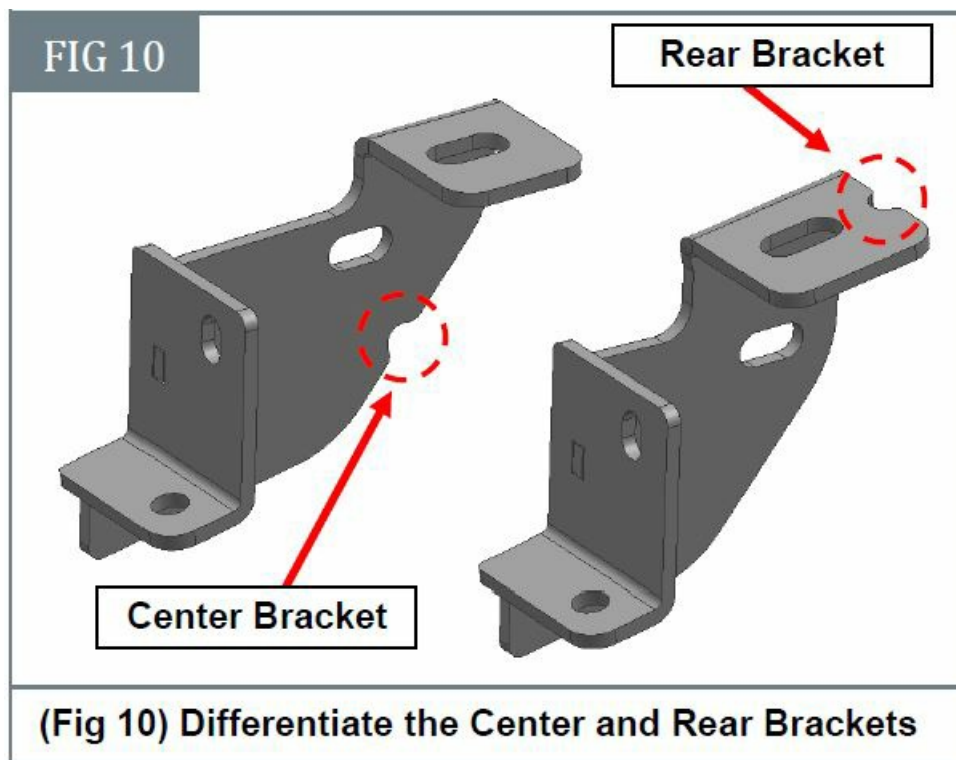


**(Fig 8) Passenger/Right center mounting location
(Model with open mounting location shown)**

FIG 9



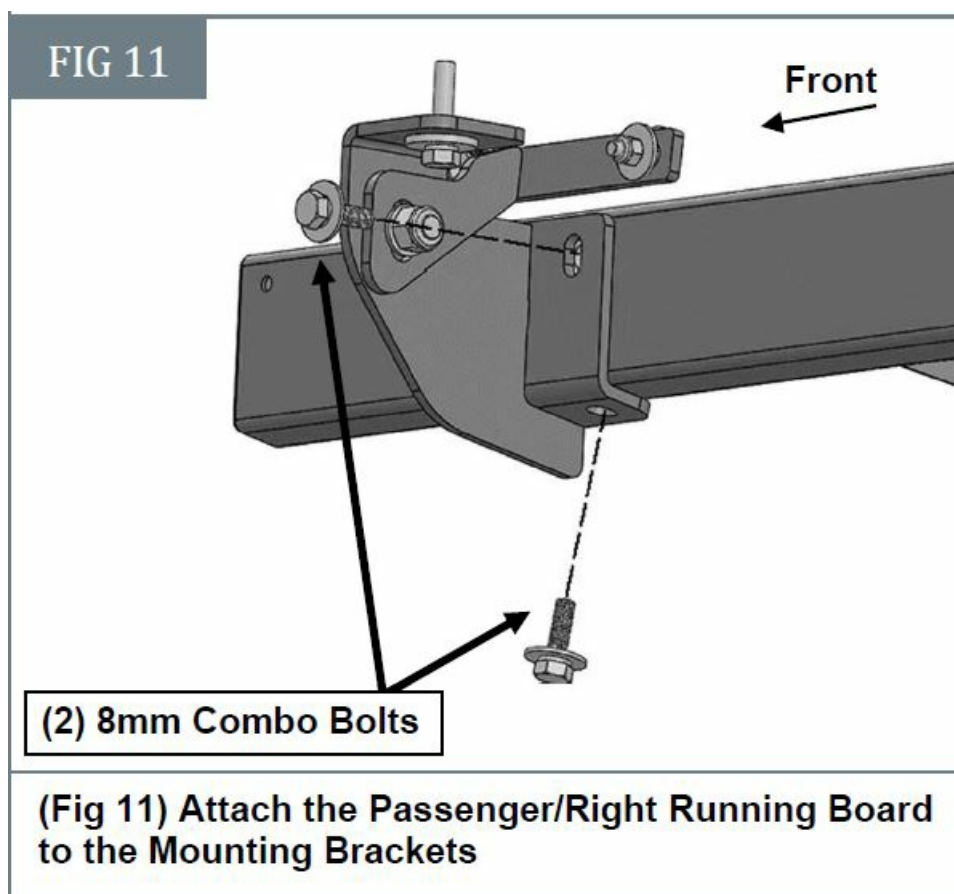
**(Fig 9) Passenger/Right rear mounting location
(Model with threaded inset shown)**



STEP 6

Select the Passenger/Right Running Board.

NOTE: The Passenger/Right Running Board will have a "P" on the front. Attach the Running Board to the Mounting Brackets with (6) 8mm Combo Bolts, (Fig 11). **IMPORTANT:** Do not slide the Running Board on the Mounting Bracket cradles, or damage to the finish may result. Do not tighten the hardware.



STEP 7

Level and adjust the Running Board and tighten all hardware.

STEP 8

Repeat Steps 1—7 to attach the Driver/Left Running Board.

STEP 9

Do periodic inspections of the installation to make sure that all hardware is secure and tight.

Attention

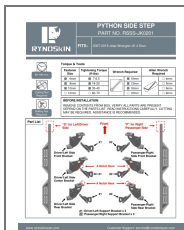
To protect your investment, do not use any type of polish or wax that may contain abrasives that could damage the finish.

Mild soap may be used also to clean the Running Boards.

www.rynoskinauto.com.

Customer Support: service@rynoskinauto.com

Documents / Resources



[RYNOSKIN RSSS-JK0201 DS7 II Python Side Steps](#) [pdf] Installation Guide
RSSS-JK0201 DS7 II Python Side Steps, RSSS-JK0201, DS7 II Python Side Steps, Python Side Steps, Side Steps, Steps

References

-  [RYNOSKIN](#)

[Manuals+](#)