

RVLOCK
Quick Lock Screen Crossbar



RVLOCK Quick Lock Screen Crossbar User Manual

[Home](#) » [RVLOCK](#) » RVLOCK Quick Lock Screen Crossbar User Manual 

Contents

- [1 RVLOCK Quick Lock Screen Crossbar](#)
- [2 Product Usage Instructions](#)
- [3 Documents / Resources](#)
 - [3.1 References](#)
- [4 Related Posts](#)

RVLOCK

RVLOCK Quick Lock Screen Crossbar



Product Specifications:

- Product Name: Remote Assist Screen Crossbar
- Material: Aluminum
- Color: Silver
- Dimensions: Adjustable

Product Usage Instructions

Measure:

Measure the width of the screen door by measuring from edge to edge of your aluminum frame.

Set Length:

Extend the Screen Crossbar to the previously measured length and mark the 3 screw holes for drilling on the back of the bar.

Drill Pilot Holes:

Use the included drill bit to drill pilot holes into the back of the Screen Crossbar. Secure the previously measured length using the 3 included screws. Avoid drilling through the front of the screen crossbar.

Mount:

Hold the Screen Crossbar up to the desired mounting location.

Confirm that it is level and mark the screw holes on the screen door for drilling. Drill pilot holes and mount the crossbar. Avoid drilling through the front of the screen frame.

Pairing:

Press and release the FOB learn button on the back of your RVLock handle, then press the lock button on your Screen Crossbar to finalize pairing.

Frequently Asked Questions (FAQ):

1. Q: Can I paint the Screen Crossbar to match my door color?

A: While it is possible to paint the Screen Crossbar, we recommend using paint suitable for aluminum surfaces for best results.

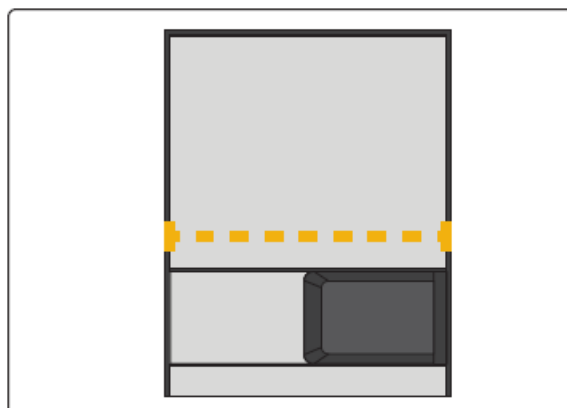
2. Q: Is the Screen Crossbar weather-resistant?

A: Yes, the Screen Crossbar is designed to be weather-resistant and suitable for outdoor use.

Measure

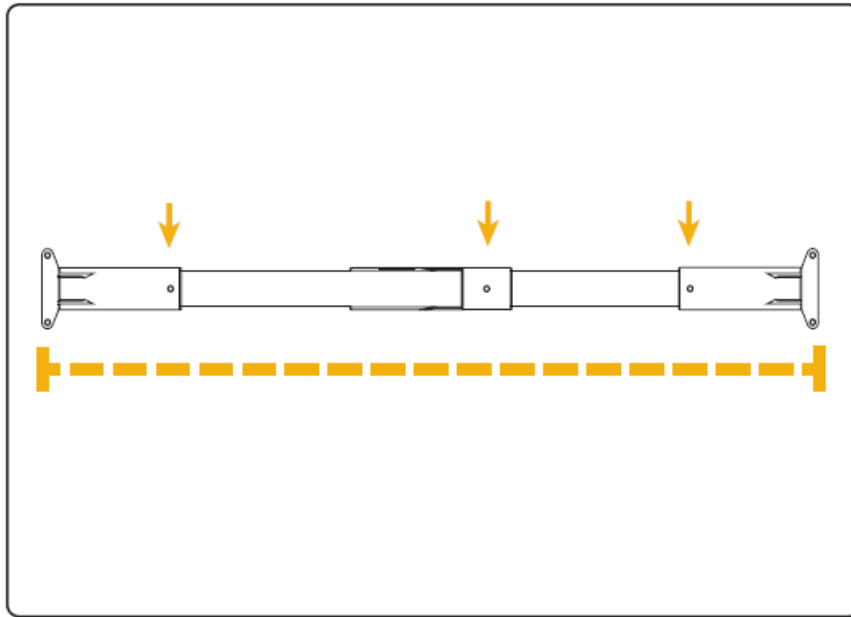
Measure the width of the screen door.

*Measure from edge to edge of your aluminum frame.



Set Length

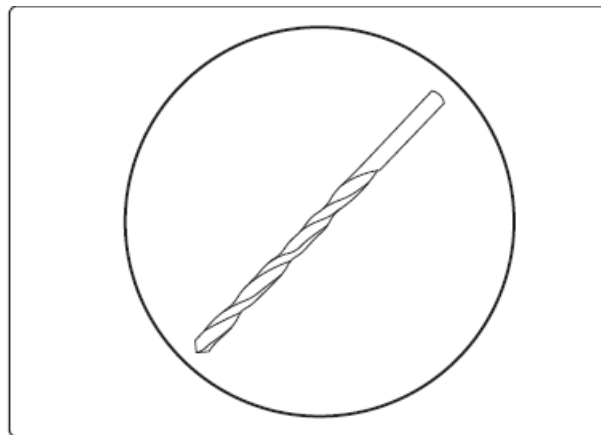
Extend the Screen Crossbar to the previously measured length and mark the 3 screw holes for drilling on back of bar.



Drill Pilot Holes

Use the included drill bit to drill pilot holes into the back of the Screen Crossbar. Use the 3 included screws to secure the previously measured length.

*Avoid drilling through front of screen crossbar.

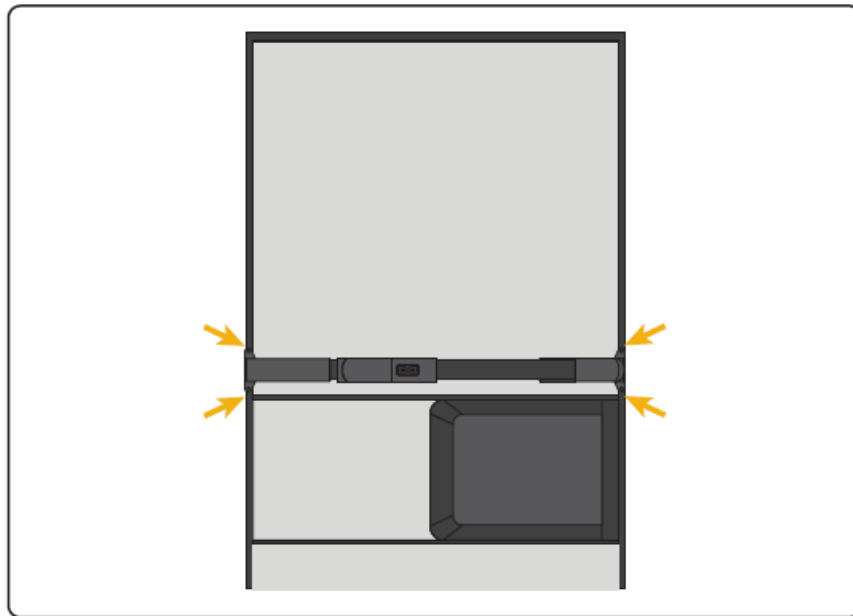


Mount

Hold Screen Crossbar up to the desired mounting location. Confirm that it is level and mark the screw holes on the screen door for drilling.

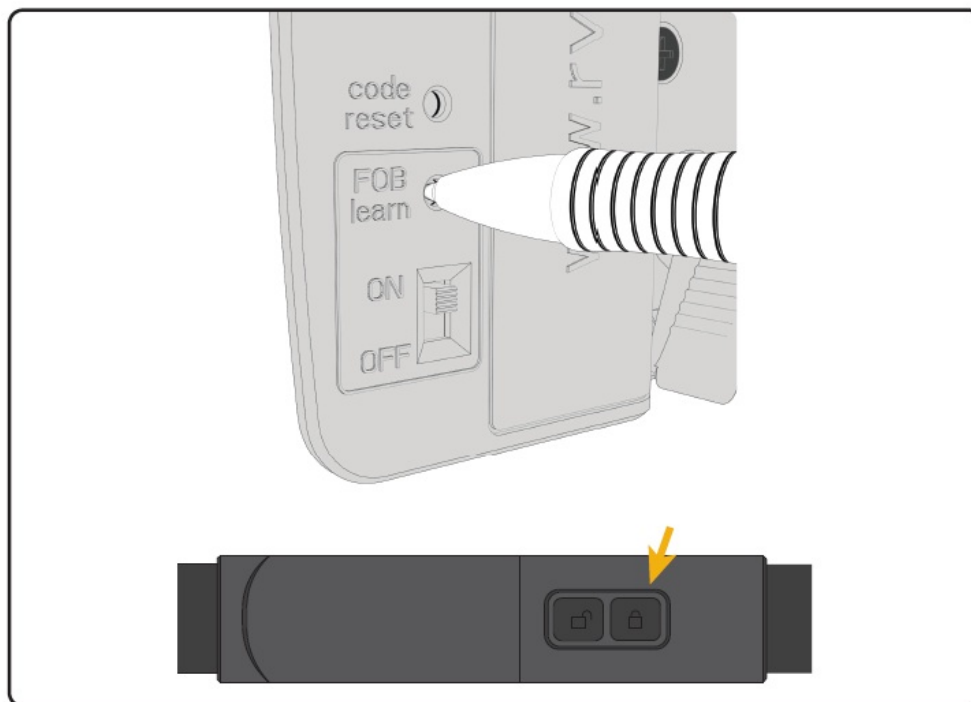
Drill pilot holes and mount.

*Avoid drilling through front of screen frame.

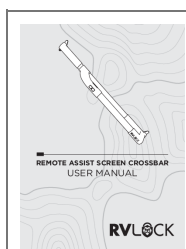


Pairing

Press and release the FOB learn button on the back of your RVLock handle, then press the lock button on your Screen Crossbar to finalize pairing.



Documents / Resources



[RVLOCK Quick Lock Screen Crossbar](#) [pdf] User Manual

Quick Lock Screen Crossbar, Quick Lock Screen Crossbar, Lock Screen Crossbar, Screen Crossbar, Crossbar

References

- [User Manual](#)

Manuals+, Privacy Policy

This website is an independent publication and is neither affiliated with nor endorsed by any of the trademark owners. The "Bluetooth®" word mark and logos are registered trademarks owned by Bluetooth SIG, Inc. The "Wi-Fi®" word mark and logos are registered trademarks owned by the Wi-Fi Alliance. Any use of these marks on this website does not imply any affiliation with or endorsement.