




# RUSTA 915013880101 Table Lamp Instruction Manual

[Home](#) » [RUSTA](#) » RUSTA 915013880101 Table Lamp Instruction Manual 

## Contents

- [1 RUSTA 915013880101 Table Lamp](#)
- [2 Product Information](#)
- [3 Product Usage Instructions](#)
- [4 Environment and Recycling](#)
- [5 Contact Information](#)
- [6 Assembling Instruction](#)
- [7 RIGHT OF COMPLAINT](#)
- [8 ENVIRONMENT AND RECYCLING](#)
- [9 Customer Service Rusta](#)
- [10 Documents / Resources](#)
  - [10.1 References](#)



**RUSTA 915013880101 Table Lamp**



## Product Information

- **Product Name:** Table Lamp
- **Model:** Reykja vik
- **Item Numbers:** 915013880101/915013850101/915013850102
- **Power Supply:** 220-240v~ 50Hz
- **Bulb Type:** E14 Max 8W LED
- **Usage:** Indoor use only

## Product Usage Instructions

1. If the external flexible cable or cord of this luminaire is damaged, it shall be exclusively replaced by the manufacturer or his service agent or a similar qualified person to avoid a hazard.
2. Do not remove or replace a light bulb in a socket when the product is plugged into the electricity.
3. To avoid the risk of fire, do not adapt any bulb exceeding the recommended wattage (8W LED).

## Environment and Recycling

When the product is used up, leave it for recycling according to local waste disposal regulations. Note that the

product must not be disposed of with normal household waste.

## **Contact Information**

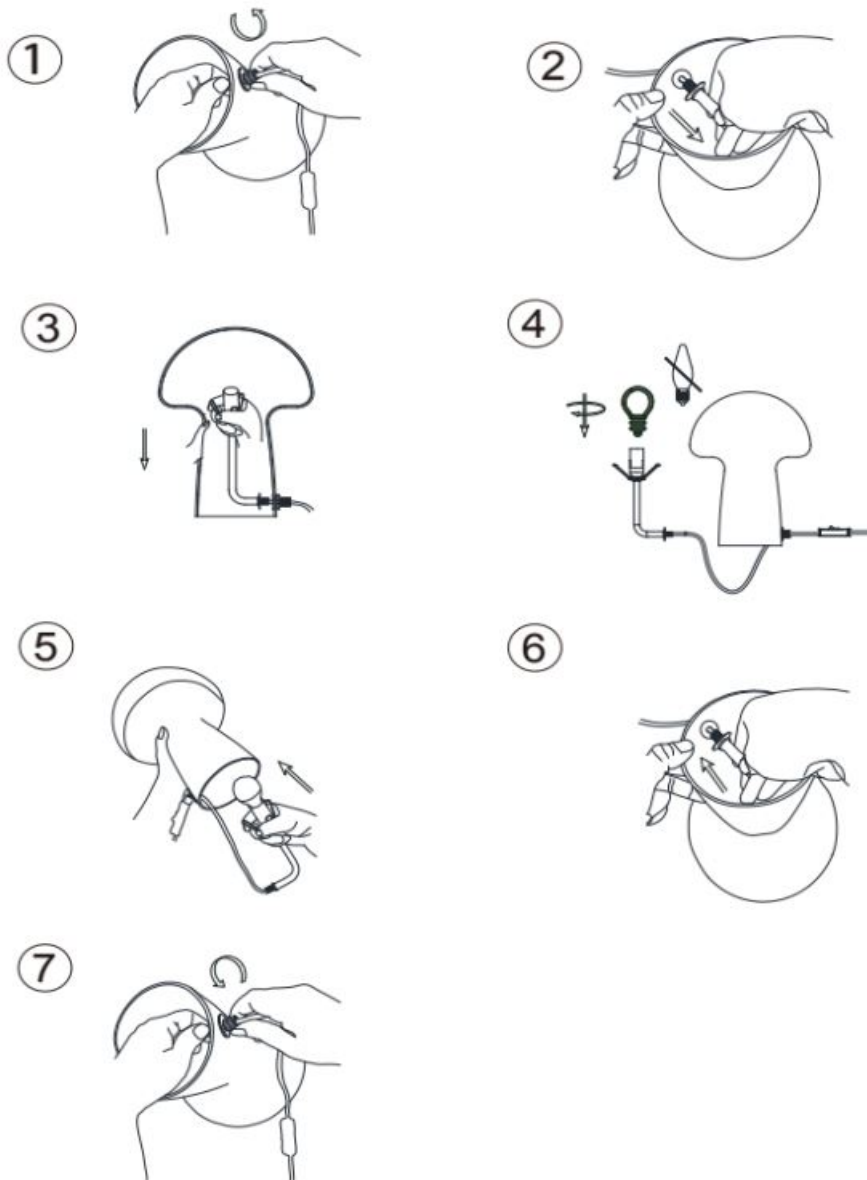
**Customer Service:** Rusta

**Consumer Contact:**

- **Website:** [www.rusta.com](http://www.rusta.com).
- **E-mail:** [customerservice@rusta.com](mailto:customerservice@rusta.com).

1. If the external flexible cable or cord of this luminaire is damaged, it shall be exclusively replaced by the manufacturer or his service agent or a similar qualified person to avoid a hazard.
2. Do not remove or replace a light bulb in a socket when the product is plugged into the electricity.
3. To avoid the risk of fire, do not adapt any bulb exceeding the recommended wattage. 220-240v~ 50Hz E14 Max 8W LED
4. Indoor use only.

## **Assembling Instruction**



## RIGHT OF COMPLAINT

By law, the product must be returned to the place of purchase along with the original receipt in the event of a complaint. The user is liable for any damage to the product that is caused by not using the product for its intended purpose or by not following this user manual correctly. The right of complaint will not apply in these instances.

## ENVIRONMENT AND RECYCLING



When the product is used up, leave it for recycling according to local waste disposal regulations. Note that the product must not be disposed of with normal household waste.

## Customer Service Rusta

### Consumer Contact:

- **Website:** Rusta Customer Service, Box 5064, 194 05 Upplands Väsby, SWEDEN [www.rusta.com](http://www.rusta.com).
- **E-mail:** [customerservice@rusta.com](mailto:customerservice@rusta.com).

Documents / Resources

	<p><a href="#">RUSTA 915013880101 Table Lamp</a> [pdf] Instruction Manual</p> <p>915013880101, 915013850101, 915013850102, 915013880101 Table Lamp, Table Lamp, Lamp</p>
	<p><a href="#">Rusta 915013880101 Table Lamp</a> [pdf] User Manual</p> <p>915013880101 Table Lamp, 915013880101, Table Lamp, Lamp</p>

References

-  [Rusta](#)