



[Home](#) » [RUNXIN](#) » **RUNXIN DC305A, DC306A Emitter User Manual** 

Contents [[hide](#)]

- [1 RUNXIN DC305A, DC306A Emitter](#)
- [2 Specifications](#)
- [3 Product Usage Instructions](#)
- [4 Installation & Setup](#)
- [5 FCC STATEMENT](#)
- [6 FAQs](#)
- [7 Documents / Resources](#)
 - [7.1 References](#)



RUNXIN DC305A, DC306A Emitter



Specifications

Feature	Description
Model	DC305A / DC306A
Type	RF Emitter / Remote Control
Frequency	433.92 MHz
Channels	1 to 15 (depending on version)
Battery	CR2430, 3V lithium coin cell
Range	~200 meters open space / ~30–35 m indoor
Power Output	≤10 mW

Feature	Description
Compatibility	BREL and other 433MHz-compatible motors
Functions	Up, Down, Stop, Channel switch, Pairing

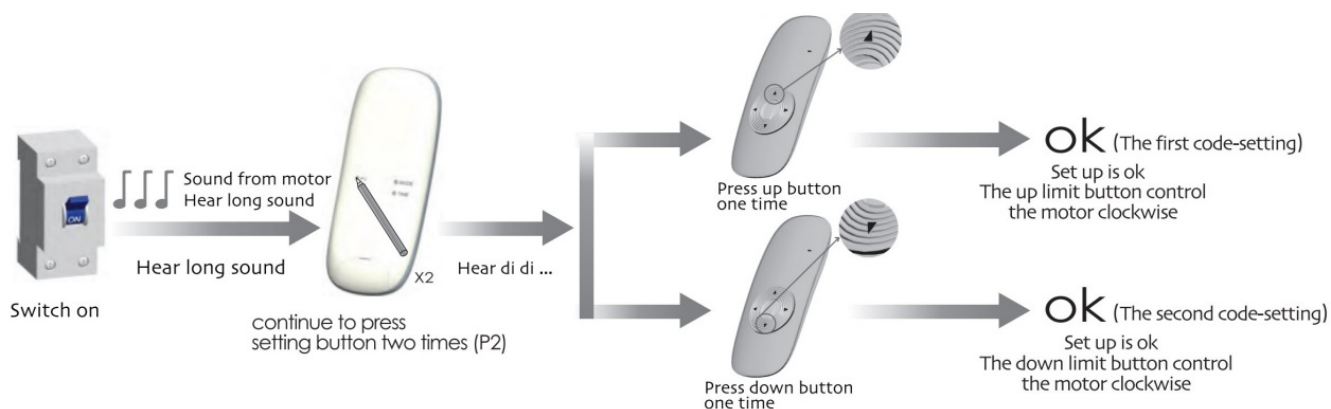
Product Usage Instructions

Transmitter

- You can choose a single channel (DC305(A/G)). .ivh indicator light means one control
- channel. Press the “channel choose” button PI-(indicator moves left side) or P1 + (indicator moves right side) to change the
- channel. On the analogy of this, the loose finger is when the indicator light moves to the suitable channel that you select effective channel.
- All indicator lights flash, which means all channels are effective (group control state).

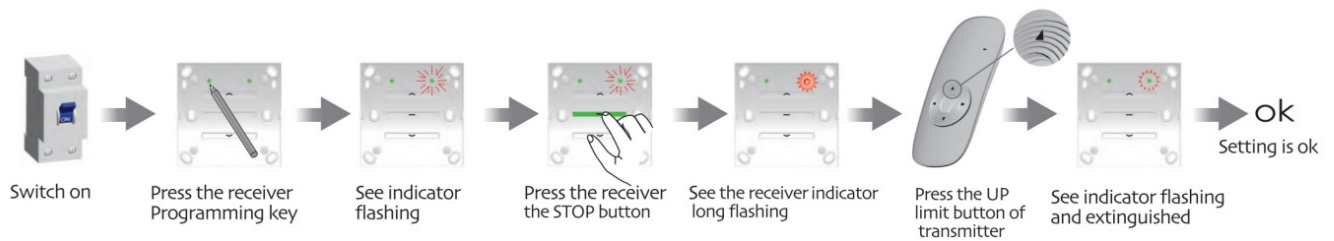
Matchable R Tubular Motor Set up

- Delete all the data of the motor, and the new emitter has been programmed.
- Each time, the interval of pressing different buttons must be within 4 seconds when you reset all instructions; otherwise, the system will restore the original state.



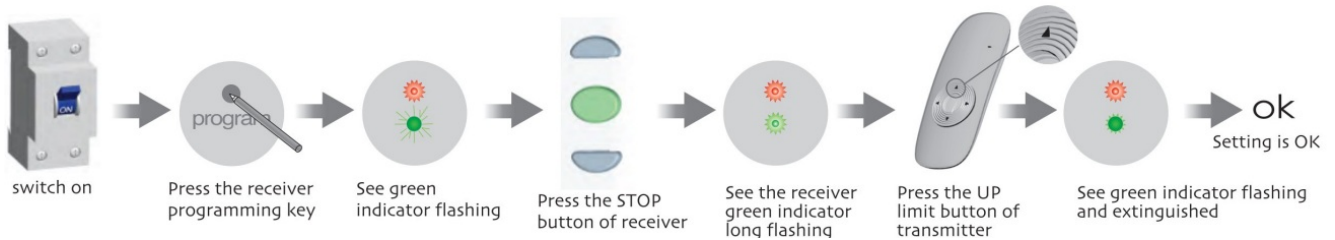
Matchable DC227/DC228 Tubular Motor Set up

- The interval between different buttons must be within 10 seconds for all settings; otherwise, the system will restore the original state.
- One receiver stores 20 emitter channels at most, and one channel of emitter can control 20 receivers at most.

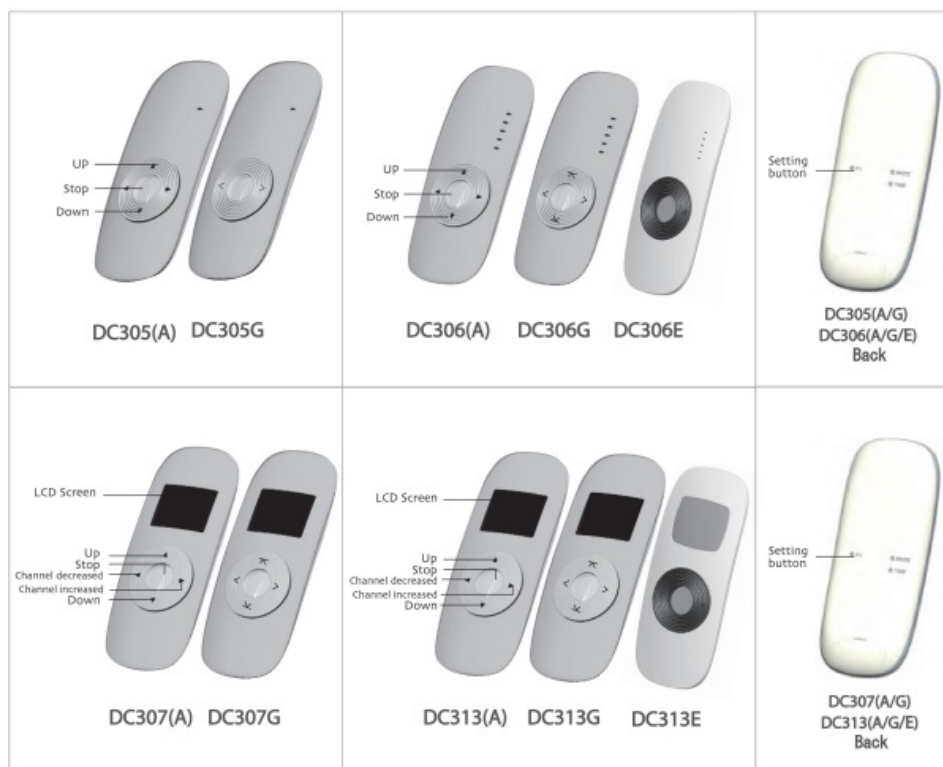


Matchable DCI 36 Tubular Motor Set up

- The interval between different buttons must be within 10 seconds for all settings; otherwise, the system will restore the original state.
- One receiver stores 20 emitter channels at most, and one channel of emitter can control 20 receivers at most.



Type Specification



Installation & Setup

Battery Installation

1. Slide off the battery cover.
2. Insert a CR2430 battery with the correct polarity.
3. Replace the cover securely.

Pairing Procedure

To pair the DC305A/DC306A with a compatible motor or receiver:

1. **On the working remote:** Press the P2 button twice.
2. **On the new emitter:** Press the P2 button once.
3. The motor will jog (move briefly) to confirm successful pairing.

For unpairing: Repeat the above steps.

FCC STATEMENT

This device complies with Part 15 of the FCC. Operation is subject to the following two conditions:

1. This device may not cause harmful interference,
2. This device must accept any interference received, including interference that may cause undesired operation.

Any changes or modifications not expressly approved by the party responsible for compliance could void the user's authority to operate the equipment. This equipment has been tested and found to comply with the limits for a Class B digital device, under part 15 of the FCC Rules. These limits are designed to provide reasonable protection against harmful interference in a residential installation. This equipment generates uses and can radiate radio frequency energy and, if not installed and used by the instructions, may cause harmful interference to occur in a particular installation. If this equipment does cause to, try to correct the interference by one or more of the following measures:

- Reorient or relocate the receiving antenna.
- Increase the separation between the equipment and receiver.
- Connect the equipment to an outlet on a circuit different from that to which the receiver is connected.

- Consult the dealer or an experienced radio/TV technician for help.

FAQS

Q. What is the difference between DC305A and DC306A?

DC305A and DC306A are very similar in function—both are multi-channel RF remote emitters using 433.92 MHz. The main difference is usually in the number of channels supported or design format (e.g., button layout or timer functionality). Refer to your motor’s compatibility list for specifics.

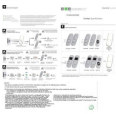
Q. What frequency do these emitters use?

They operate at 433.92 MHz, a common RF frequency for home automation and motor control systems.

Q. What is the typical range of the DC305A/DC306A?


- **Open field:** Up to 200 meters
- **Indoors (with walls):** Around 30–35 meters, depending on obstructions

Documents / Resources

	RUNXIN DC305A, DC306A Emitter [pdf] User Manual 2AZM7-DC306A, 2AZM7DC306A, dc306a, DC305A DC306A Emitter, DC 305A DC306A, Emitter
---	--

References

- [User Manual](#)

 2AZM7-DC306A, 2AZM7DC306A, DC305A DC306A, DC305A DC306A Emitter, dc306a, Emitter, RUNXIN RUNXIN

Leave a comment

Your email address will not be published. Required fields are marked *

Comment *

Name

Email

Website

☐ Save my name, email, and website in this browser for the next time I comment.

Post Comment

Search:

e.g. whirlpool wrf535swhz

Search

[Manuals+](#) | [Upload](#) | [Deep Search](#) | [Privacy Policy](#) | [@manuals.plus](#) | [YouTube](#)

This website is an independent publication and is neither affiliated with nor endorsed by any of the trademark owners. The "Bluetooth®" word mark and logos are registered trademarks owned by Bluetooth SIG, Inc. The "Wi-Fi®" word mark and logos are registered trademarks owned by the Wi-Fi Alliance. Any use of these marks on this website does not imply any affiliation with or endorsement.