

## Ruko F11GIM Drones with Camera User Guide

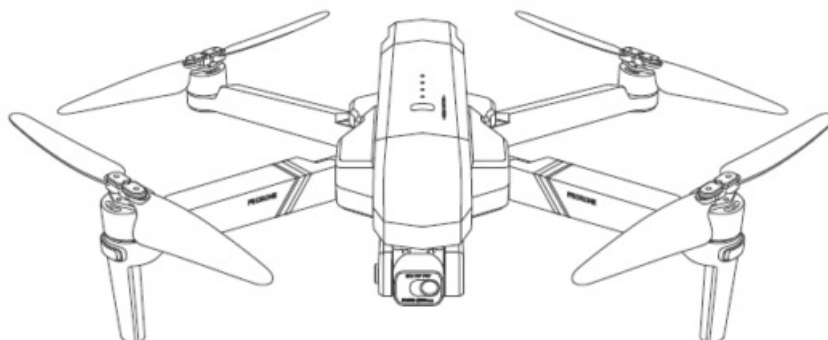
[Home](#) » [Ruko](#) » Ruko F11GIM Drones with Camera User Guide 

### Contents

- [1 Ruko F11GIM Drones with Camera](#)
- [2 Download App](#)
- [3 Charge the Batteries](#)
- [4 Select an Open Flight Area](#)
- [5 Connect to Wi-Fi](#)
- [6 Calibrate the Compass](#)
- [7 Calibrate the Gyroscope](#)
- [8 Gimbal Self-inspection](#)
- [9 Search for GPS Automatically](#)
- [10 Start the Motors](#)
- [11 Common Problems and Solutions](#)
- [12 Documents / Resources](#)
- [13 Related Posts](#)

**Ruko**<sup>®</sup>

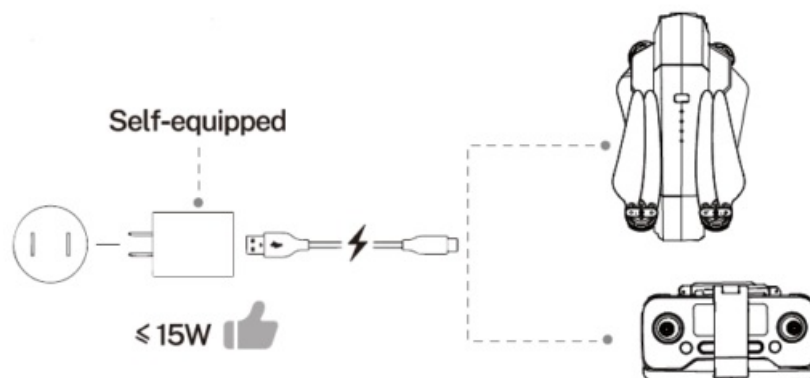
### Ruko F11GIM Drones with Camera

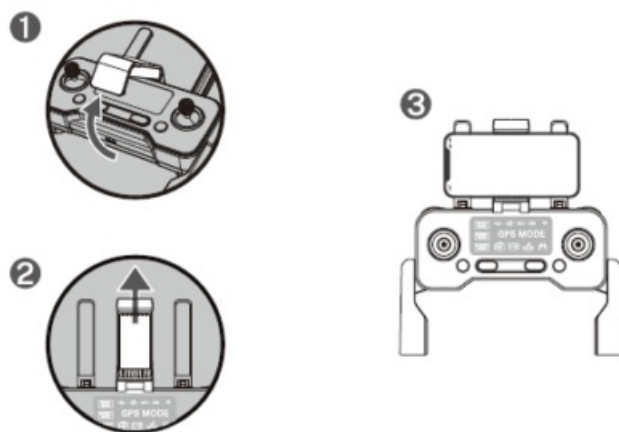
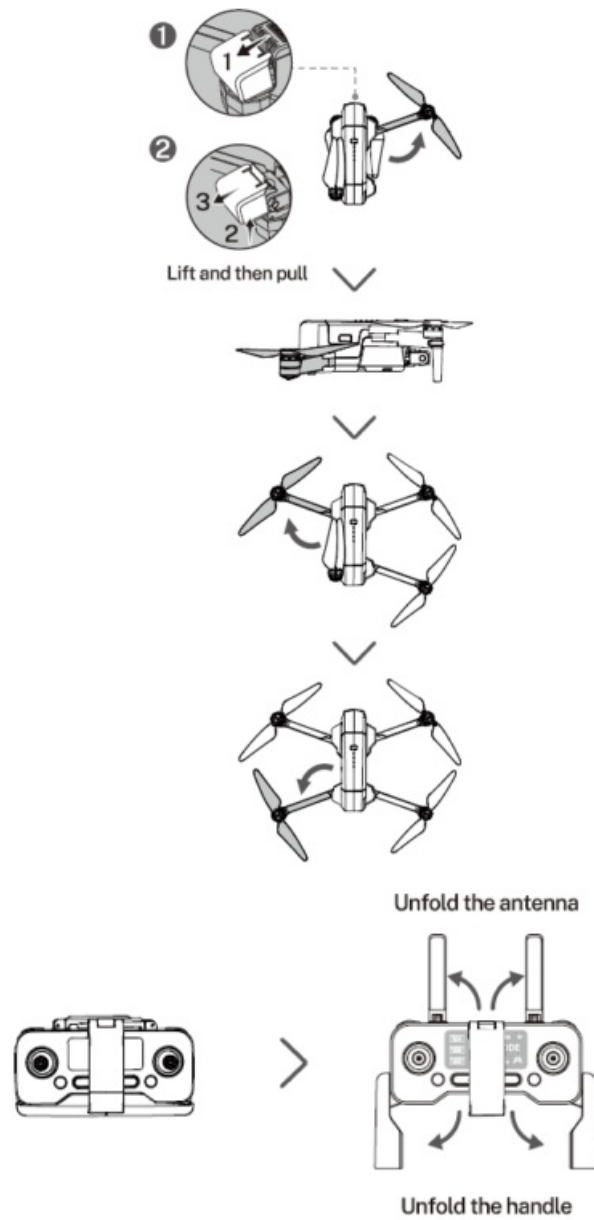


## Download App



## Charge the Batteries

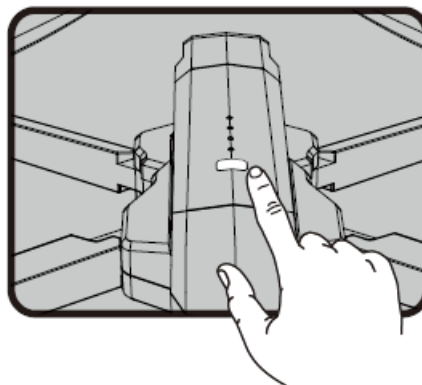




Select an Open Flight Area

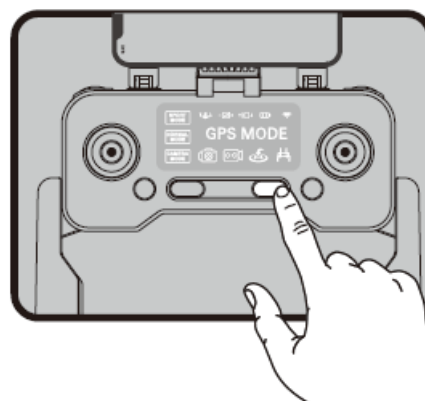


1



Press and hold the button until the Aircraft plays startup sound.

2



Short-press to power on the Transmitter.

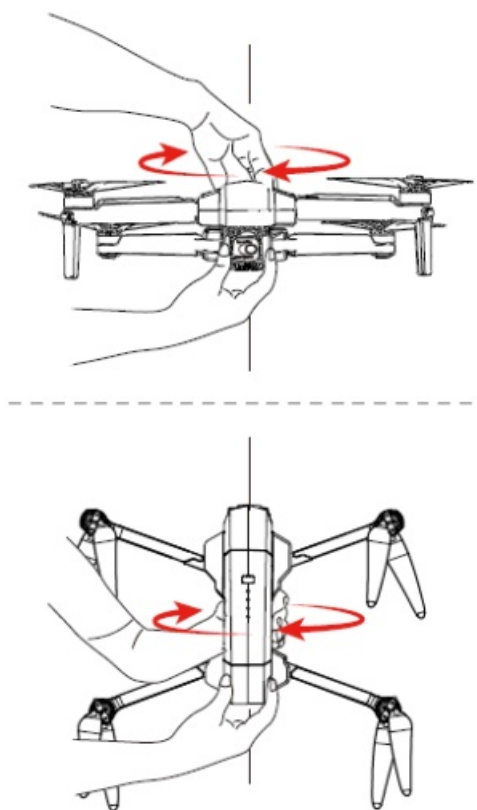
**Note:** Please turn on the Aircraft firstly, then the Transmitter. Otherwise, they will not be paired.

## Connect to Wi-Fi

Connect the mobile device to the Aircraft's Wi-Fi and enter the app operation page. Please refer to user manual (page 32) for more details.



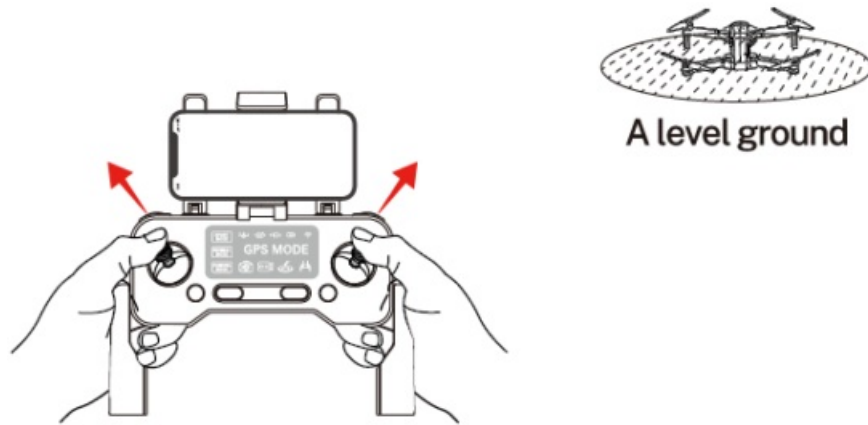
## Calibrate the Compass



- Rotate the aircraft horizontally 360°.( About 1-2 turns)
- Rotate the aircraft vertically 360°.( About 1-2 turns)

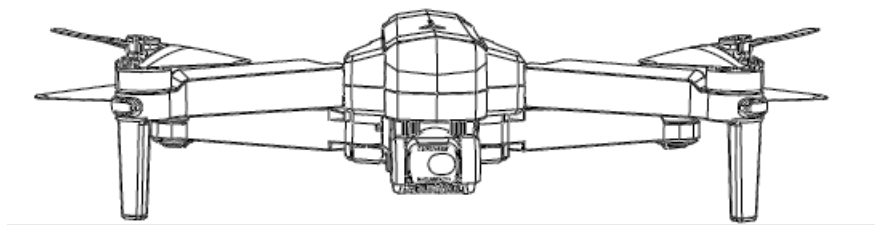
## Calibrate the Gyroscope

Push joysticks to 11 & 1 o'clock position.( About 2 seconds)

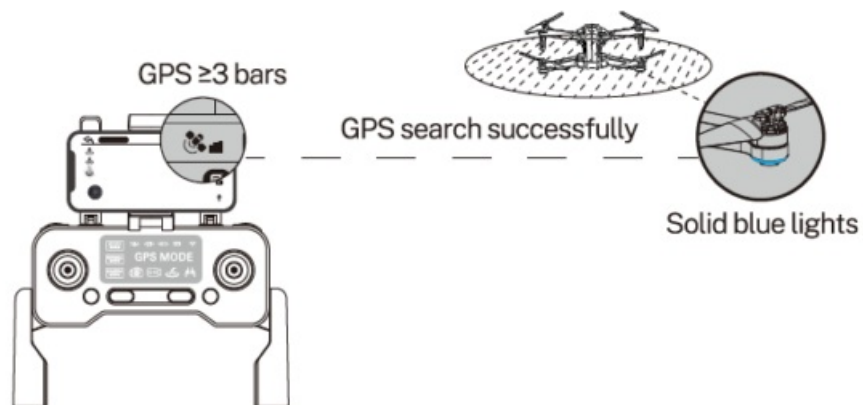


## Gimbal Self-inspection

Put on a level surface.( About 20 seconds)



## Search for GPS Automatically

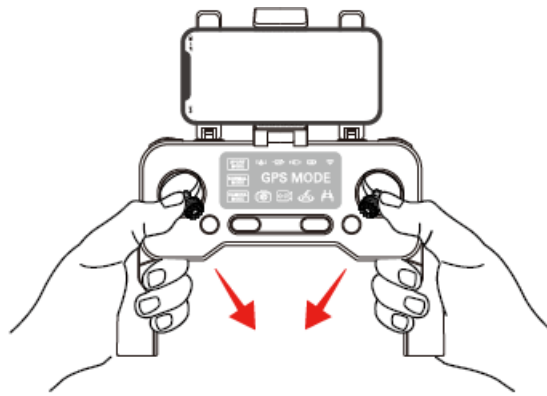


### Tips:

1. The searching time depends on the flight environment.
2. If unsuccessful, the motors can't be started.

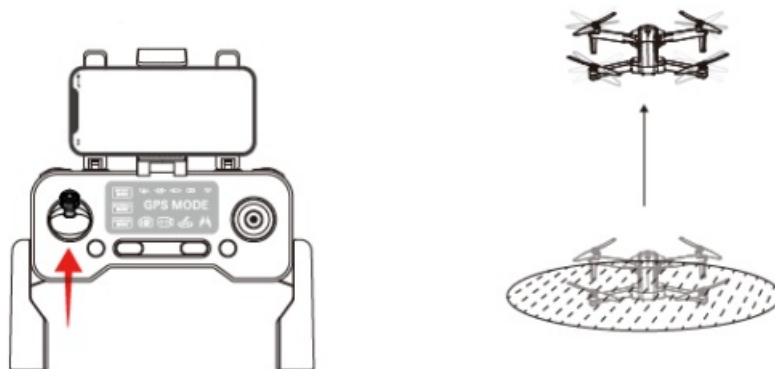
## Start the Motors

Push joysticks to 5 & 7 o'clock position.( About 2 seconds)



### Take off

Push up the left stick.



### Common Problems and Solutions

Qu esti on	Reason	I Solut ions
The motors cann ot be start ed	Weak GPS signal	<b>Turn</b> on the Air craft in an open area with s tr ong GPS signal
	The red li ght st ays on	The Aircraft has low batt ery. Please charg e the batt ery in time
	The pink li ght stays on	The compass is not cali brated. Please ref er to the “Cali brati on Before Fli ght ” sect i on of the user manual
	The lef t and right joystick are n ot in place	Push th e left and right joysti cks simul tan e ously to 5 o'clock and 7 o'clock for 2 seco nds
	Flying too low, aff ected by Aircraf t airfl ow	Please f ly th e Aircraf t above 9.8 4f t(3 meters)

Unstable flight	The gyroscope is not calibrated	Place the Aircraft on a horizontal surface and conduct gyroscope/horizontal calibration. Please refer to the "Calibration Before Flight" section of the user manual
	The propellers become deformed and incomplete	Replace the propellers with new ones
	GPS signal is unstable. Flying near buildings and in obstructed places	Please fly the Aircraft in an open area free of obstacles within the circle of radius 32.81 ft(10 meters)
Out of control, spinning around on its own, abnormal sound	The Transmitter signal is interfered or the Aircraft exceeds the range of remote control	Please fly the Aircraft outdoors without interference, and ensure that it is within a controllable range
	Compass interference	Please manually land the drone in time and calibrate the compass. Please make sure to fly away from the buildings, trees, power lines, and signal towers
	The propellers become deformed and incomplete	Replace the propellers with new ones
The Gimbal is not working	When Fly from the grass, the gimbal touches the grass	Put the drone on landing pad or cardboard to prevent the gimbal from hitting with other objects
	When fly from the wooden floor, vibration will be transmitted through the floor	Take off the drone from the place without vibrations
	The gimbal is interfered by external forces or the drone is picked up during self-inspection	Put the Aircraft on the level ground without touching. The gimbal will start to work after 40 seconds
	When turning on the drone on the desk, the desk will amplify the subtle vibrations into high-frequency vibrations	<b>Turn</b> on the drone on the place without vibrations



	The compass is in calibration	Put the Aircraft on level ground after compass calibration. The gimbal will start to work after 20 seconds
--	-------------------------------	--




Question	Reason	Solutions
Video freezes, image transmission distance is short	The Aircraft is out of Wi-Fi range	Fly the Aircraft within the range of the Wi-Fi
	Wi-Fi image transmission is signal interference	Fly the Aircraft in an unobstructed open area free of buildings, high-voltage wires and signal towers
	The transmitter and the mobile phone are not pointed at the direction of the drone	Point the transmitter and the mobile device at the flying direction of the Aircraft to maintain the strongest signal connection
	Phone performance freezes	Close unused apps running in the background to maintain the best performance of the phone
Video is not clear	If use APP storage, the pixels are 1920 x 720P	Insert the memory card and store the video on the memory card
App does not display the interface	The phone is not connected to Wi-Fi	Connect your mobile device to the Wi-Fi : Ru ko-GIM -*****
	The phone version is too low	Android 6.0 and above, IOS 10.02 and above
	When connecting to the drone's Wi-Fi, the network is not set or set incorrectly	Set the Wi-Fi correctly Turn the phone to airplane mode
	VPN switch is turned on	Turn off the VPN switch
APP crashes or functions abnormally	Wrong app downloaded	Download the correct App
	A few mobile phone versions are old and incompatible with APP	Provide mobile phone version and model, we will adapt and solve it
Phone cannot connect to Wi-Fi	It is the first time to connect your phone to the Wi-Fi	Try connecting a few more times or restart the phone

The WiFi name is not displayed in the list	The phone is a single band	Use the dual band devices that support both 2.4 GHz and 5 GHz/ 5.8 GHz
	WiFi has not been activated	Wait for about 30 seconds after turning on the Aircraft and keep refreshing the Wi-Fi list while the Wi-Fi is activated
GPS signal is weak	Turning on the drone indoors	GPS signals cannot be found indoors. Please search for GPS signals in an open place outdoors
	Under the tree, next to the building, in an obstructed place	Please stay away from obstacles for more than 32.81 feet( 10 meters) , and search for GPS signals in an open area

Qu esti on	Reason	I Soluti ons
Unabl e to retu rn home, driftin g and fl ying aw ay	GPS sig nal was tu rned off dur ing the fl ight	Please don't turn off GPS suddenl y during outd oor fl ight. Swit ch back to GPS mode in time
Ap p al ways says th e Tran smitt er has low batt ery	The phone cannot connect to t he Transmitt er due to th e wro ng sequence for turning on the equipments	The correct seq uence is:  1.Turn on th e Aircraft fir st ly 2. turn on the Transmitt er 3. Connect the Wif
The Air craft cannot be paired wit h the Transmitt er	The wrong sequence fo r tu rning on th e equipm ents	Correct pairing st eps: 1. Turn on the Ai rcr aft. 2. Turn on the Transmi tt er
Ca nn ot char ge batt ery/Cannot full y charge batt ery	Using inf erior charger or charg ing on the comput er with unstable volt age output	Use a mobil e USB charger that ensures c onstant st ab le volt age output(5 V) and a mperage output (2-3 A)
	Using inf erior charging cabl es	Please use the original f ac tory charging c abl e to charge
Short batt ery lif e	Flying in windy weath er	Flying in wind y weath er will acce lerat e p ower loss
	Flying in cold weath er	In low temperatur es, th e chemical reactio n of the lithium batt ery is slowed down and th e energy cann ot be full y released
	T he ba tte r y is no t fu lly c ha r g e d	Full y charged with the correct USB charge r befo re fl ying
The product has slight marks	We tested all Aircraft before sh ipping	In order to give you the best experience, w e tested fun cti ons of all Ai rcraft befo re s hipping. Therefore, it is in evit able th at  there will be sli g ht tr aces. However, it can be guaranteed that all Aircraft are 100 % brand new

[rukotoy.com](http://rukotoy.com)

## Documents / Resources

<div><div></div><div>Quick Start Guide v1.0</div><div></div><div>F11 GIM</div></div>	<div><div><a href="#">Ruko F11GIM Drones with Camera</a> [pdf] User Guide</div><div>F11GIM, Drones with Camera, F11GIM Drones with Camera</div></div>
---	---