



RuiDa Technology RDCMarkVision Operation User Guide

[Home](#) » [RuiDa Technology](#) » RuiDa Technology RDCMarkVision Operation User Guide 

Contents

- [1 RuiDa Technology RDCMarkVision Operation](#)
- [2 RdProjectorCut](#)
- [3 set up machine communication.](#)
- [4 Camera parameter](#)
- [5 Import Graphics](#)
- [6 Documents / Resources](#)
 - [6.1 References](#)

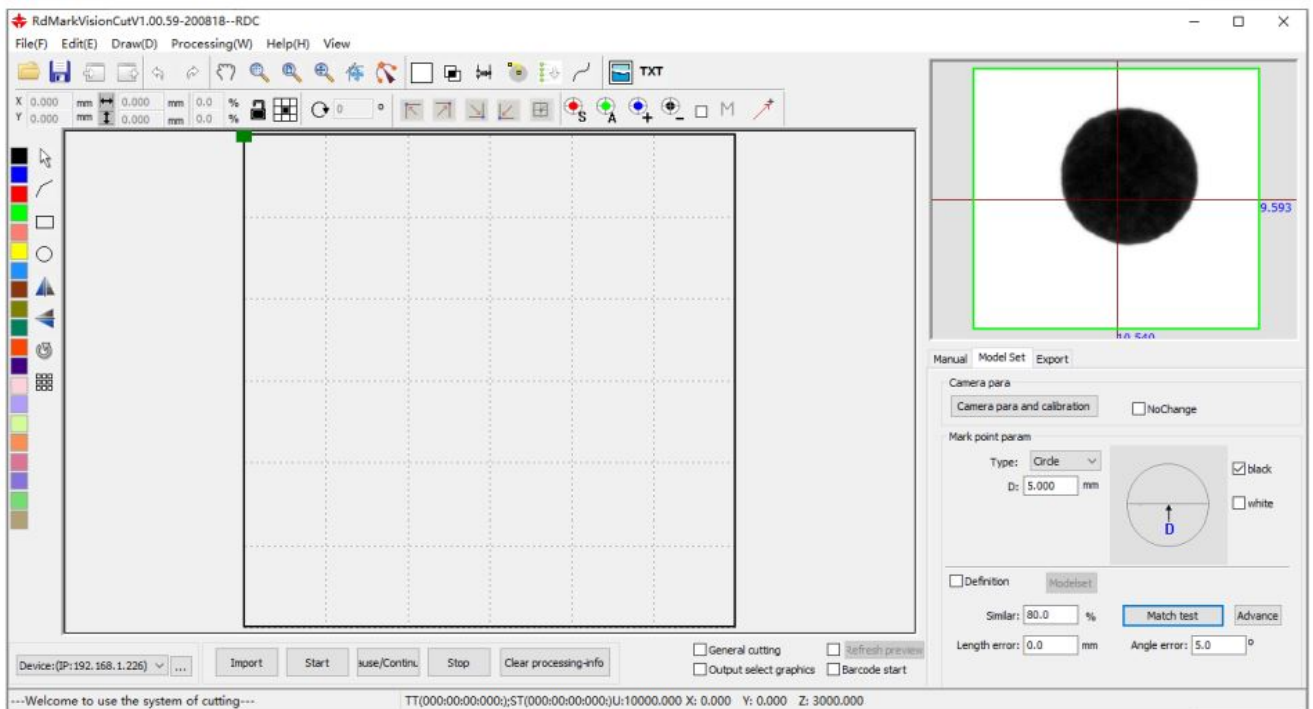


RuiDa Technology RDCMarkVision Operation



RdProjectorCut

1. the related machine manufacturer parameter Settings, camera installation. The reference 6442 vision cutting instruction. (the software for the 6442 vision cutting auxiliary software)
2. quick start.



set up machine communication.

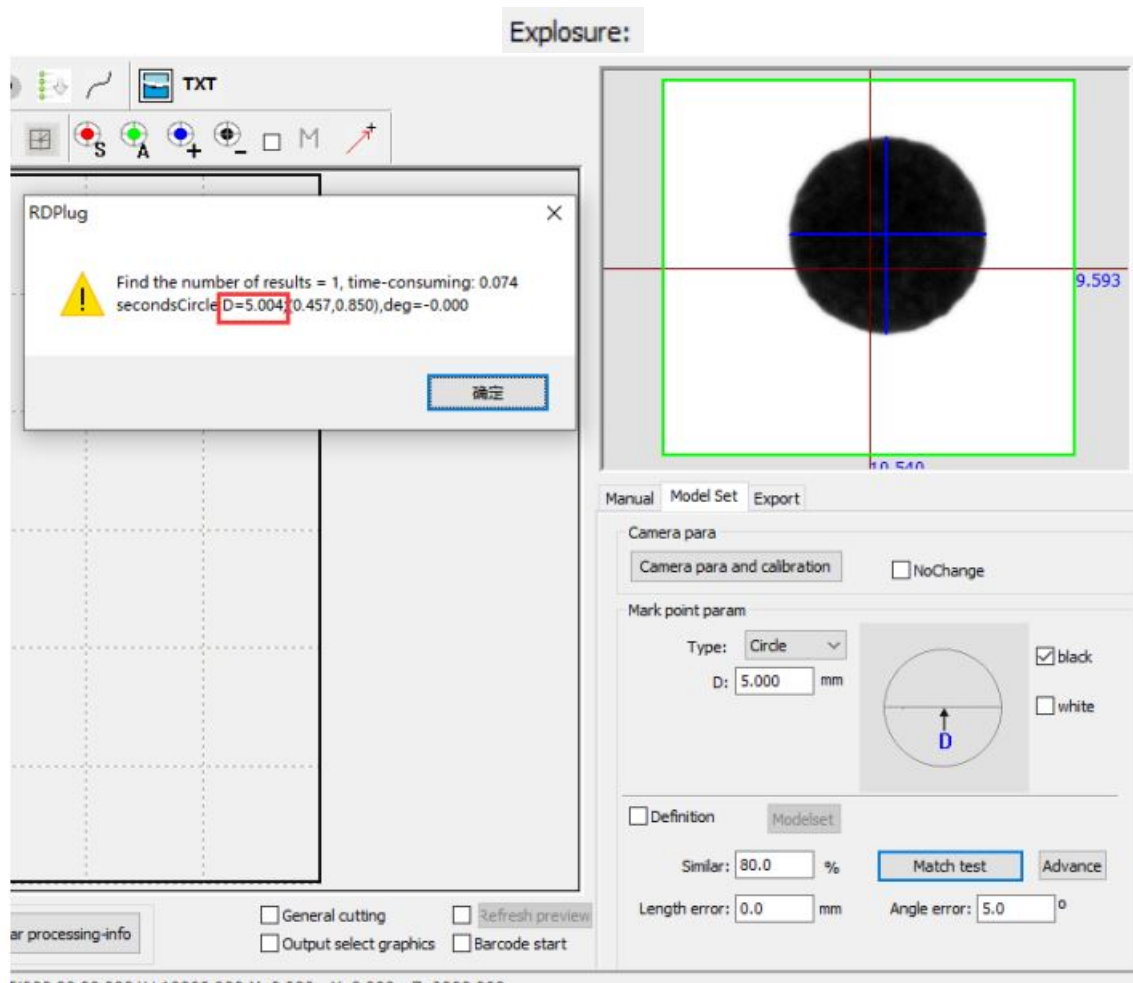
Usb port or Tcp/IP communications. Ensure successful communication.

Camera parameter

- The camera adjustment on the hardware mainly through adjusting the aperture and focal length to adjust the quality of the image, but which can't adjust freely after the camera is installed. Usually it is to adjust the ambient light.
- The camera parameters adjustment in the software:
- Contrast: Mainly through adjust the background color and contrast material color difference to fine image quality.
- Gain: the brightness of the image magnification.
- Exposure: the longer the exposure, the higher of the image brightness. Click expose operation.
- “Contrast“, “gain” are both to deal with image data. So when image is in dim, firstly adjust the light source (lamp on the camera) and Exposure , if still cannot get the desired effect, to adjust brightness, contrast, gain.

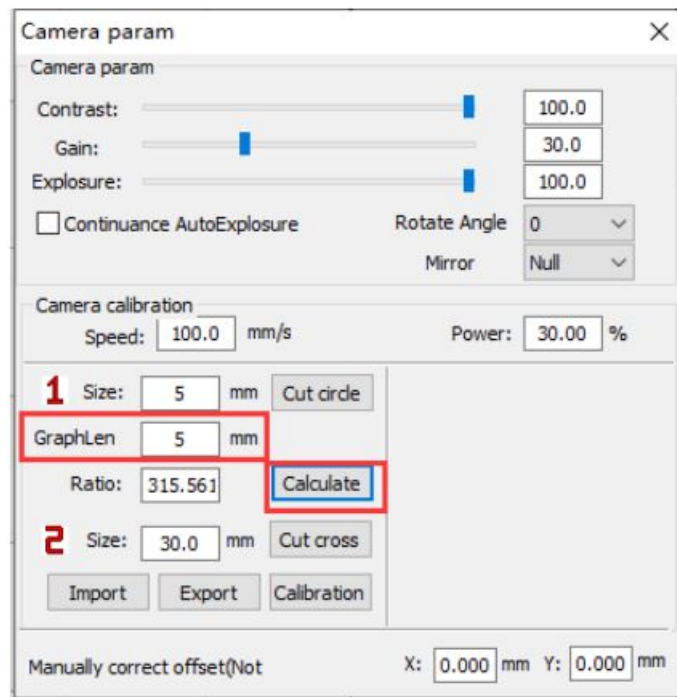
Camera Calibration:

- Speed : In the process of camera calibration, laser head moving speed or when cutting cross or dotting.
- Power : The processing power when camera calibration.
- Cutting a circle as appointed, press “cut circle”, the system will cut a circle on the platform and then matching test the circle size in the model parameters as below showed:



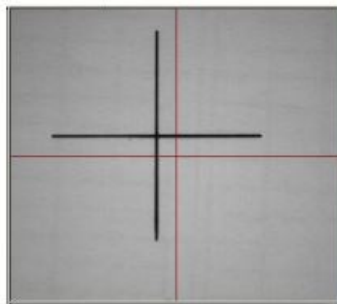
Correct the pixel precision, fill the matching test result into Measuring Length Bar, then click “Calculate”, the system will confirm the proportionality coefficient automatically.

Picture 2-2 pixel precision ratio

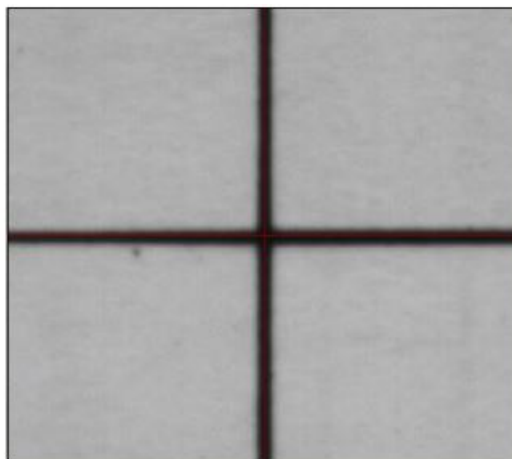


Cut Cross : Click the “Cut cross”, the laser will quickly cut a cross.

Picture 2-3 Cut Cross



Camera Distance Calibration : Cut a cross, then move the camera view cross center to coincide with the cross center, click “camera calibration”. System will calculate the offset from camera view center to the center of the



Picture 2-4 Camera Distance Calibration

Import Graphics

User clicks the imported icon, the following dialog will appear.

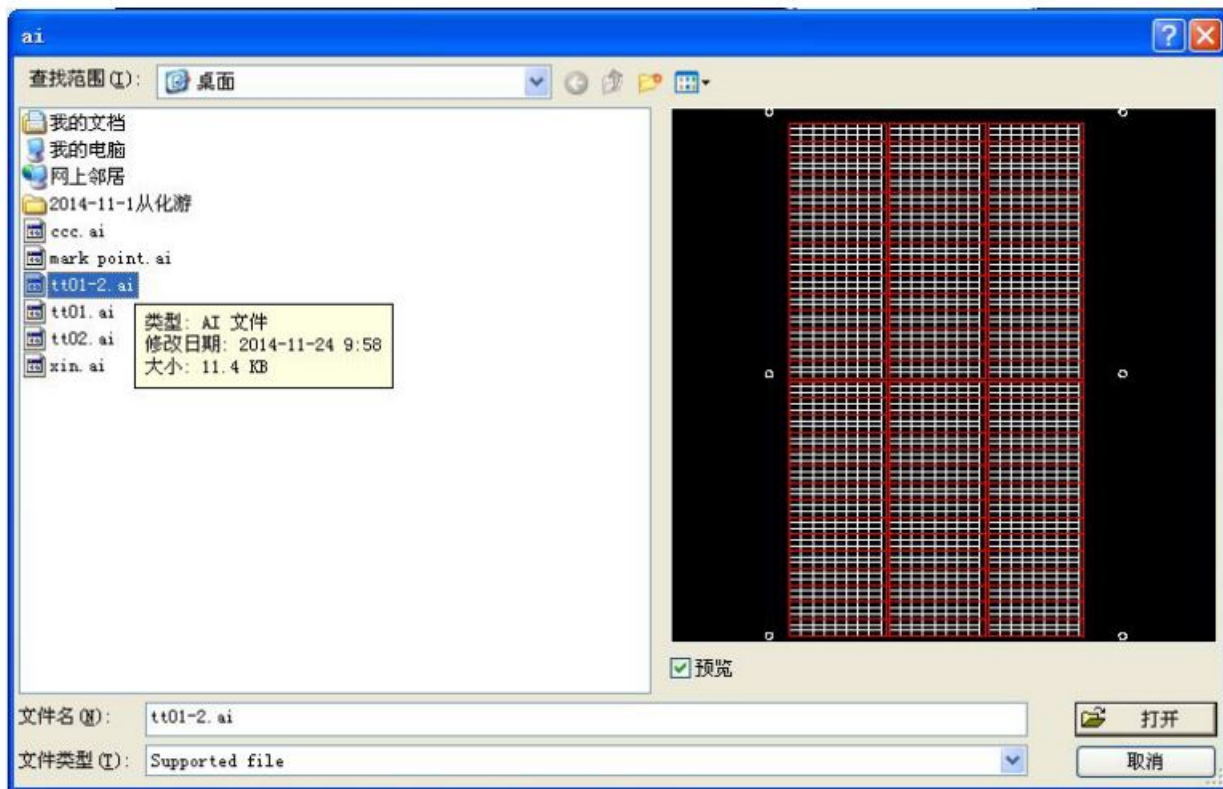


Figure 3-1 import processing file preview

Select the imported graphics, click “open”. The waiting processing graphics will appear in the main view area.

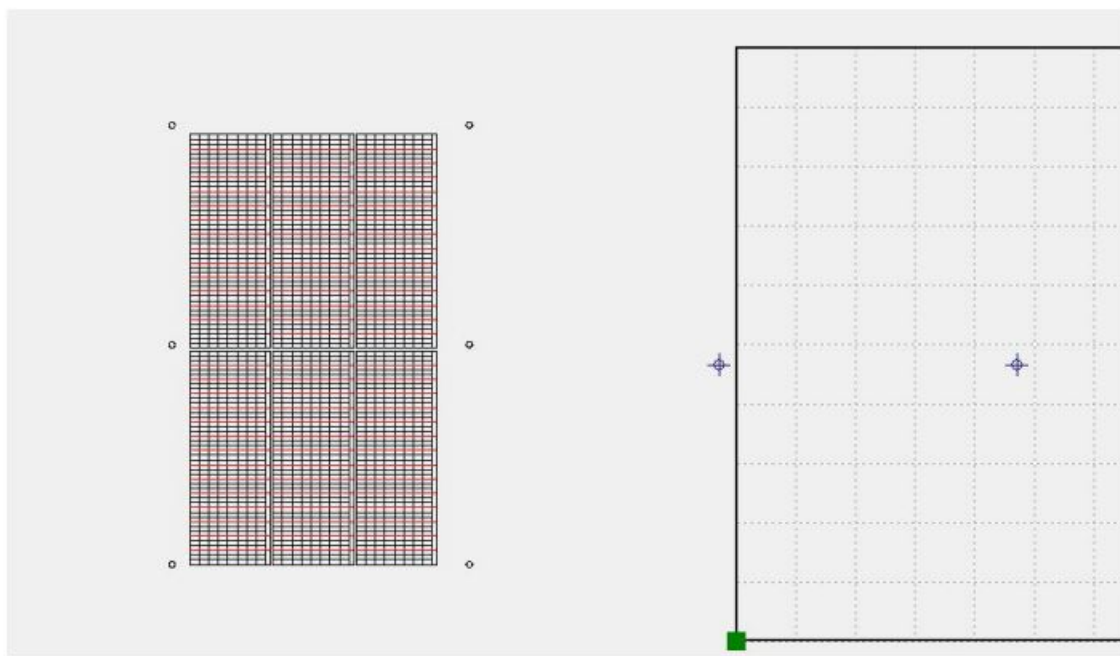


Figure3-2 import processing files

The imported graphics output as the already made layer color, you can define the output cutting contour.

Manual Model Set Export

Layer Parameter

Layer	Speed	MinPower	MaxPower	Output
	100.0	30.0	30.0	Yes
	100.0	30.0	30.0	Yes

Up

Down

Figure 3-3 File processing parameter settings

Model Parameter Settings

Manual Model Set Export

Camera para

Camera para and calibration ☐ NoChange

Mark point param

Type: Circle

D: 5.000 mm

☒ black

☐ white

☐ Definition Modelset

Similar: 80.0 % Match test Advance

Length error: 0.0 mm Angle error: 5.0 °

Figure 3-4 Model parameters

Mark point parameters

Choose the required Mark point types to make Model, respectively supporting circle, cross, rhombus, ellipse, circular ring, rectangle, square, triangle, and 8 kinds of Mark point style.

When making Model, please specifying different styles respectively according to the chart corresponding parameters (such as diameter, width).

Model matching parameters

- Smoothing coefficient: the higher smoothing coefficient, the less extracting characteristics of scattered points.

- **Similarity:** matching score between Model and the actual pattern, the higher the score, the more like of graphics. Similarity setting, will affect the match quality directly.
- **Overlapping:** the overlapping percentage of two envelope rectangles of target graphics. This parameter controls the target graphics overlapping whether to identify or not.
- **Matching angle:** the allowing model revolving and searching angle range. Such as: its value is set to 180 degrees, in the process of model matching, the range of angle searching is: $-180 \sim 180$ degrees. The match angle should be set up according to the actual requirements, the wider the angle, the more the match time required. If the user does not need to set this parameter, can remove the option directly
- **Match overtime:** this parameter controls the match time. To adjust the parameters when the target graphics matching failed due to lacking of time or to avoid waiting too long time in search process. This parameter is mainly affected by the model characteristics of complexity.
- **Matching test:** The current model matches with the current target graphics in camera view range, test results will be back in results interface. You can know the mark point elated parameters from test results.

Enable Secondary Positioning

- After searching the target, not set this location coordinates as criterion, but moved to the target automatically, take photos again, and repositioned target location coordinates.
- **Distance offset / Angle offset:** When two-point positioning, such as you might find more features when searching feature 2, according to the distance between feature 1 to feature 2, if found multiple features in the circle arc of feature 1 as origin, then as angle to distinguish them.
- **Note:** But when the offset is set too small, missing cut will be happened. Generally distance offset can be set within 2mm, angle offset within 5° , such as the workpiece requires more accurately, you can set smaller.

Mark point identification settings

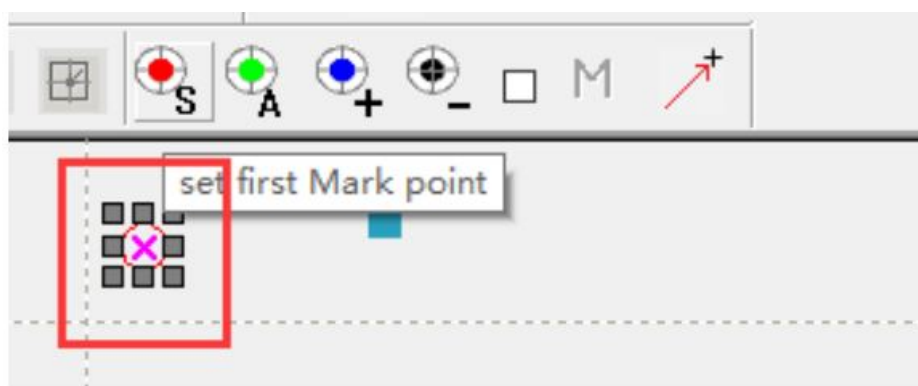

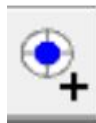



Figure 4-5 Mark point setting

Support any point identification, which is fit for mark point cutting with different quantity. To choose the mark point

in the view area, click  to set the starting point, and choose other mark point, click  to set. You can also click  to search all the mark points automatically.

Mark point searching path

Click the starting point to confirm the starting point coordinate, also can choose the mark point in the view area to

click ☒ **Mark first** to set the starting point.

The system will search the marking points starting from the closest other marking points.

Processing Settings

Move the axis, the camera will find the first Mark points, then match testing and check the matching result.

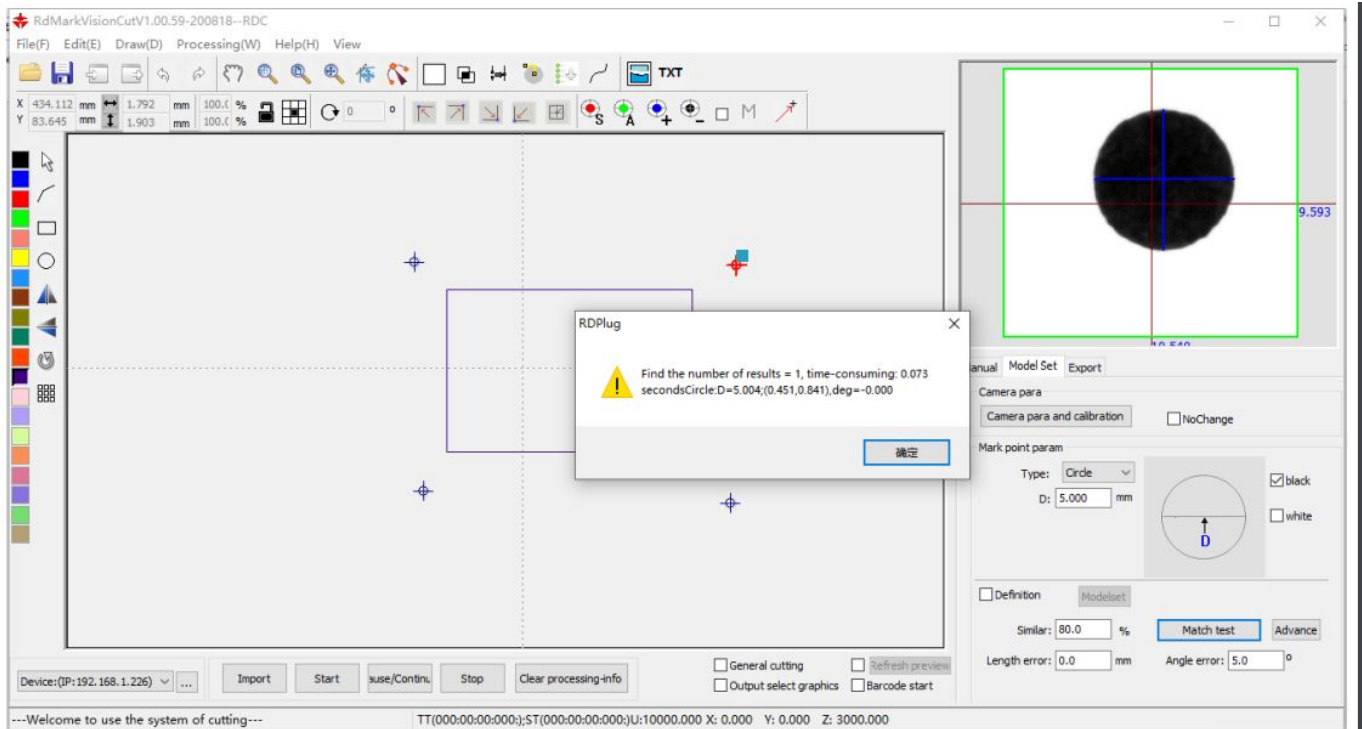


Figure 4-6 Mark point matching test

After the testing, click the “start” button on the control panel to proceed processing.


RuiDa Technology

- 1TH FLOOR,5TH BUILDING,NANYOU TIANAN INDUSTRIAL ZONE,SHENZHEN
- Phone: (086)0755-26066687
- E-Mail: support@rd-acs.com
- Web: www.rd-acs.com
- FAX: 0755-2698287

Documents / Resources

	<p>RuiDa Technology RDCMarkVision Operation [pdf] User Guide RDCMarkVision Operation, RDCMarkVision, Operation</p>
--	--

References

-  [ACS Services, Inc | We're IT for You](#)
-  [Ruida: Laser Cutting System, Laser Welding, Laser Engraving, Laser Marking](#)