

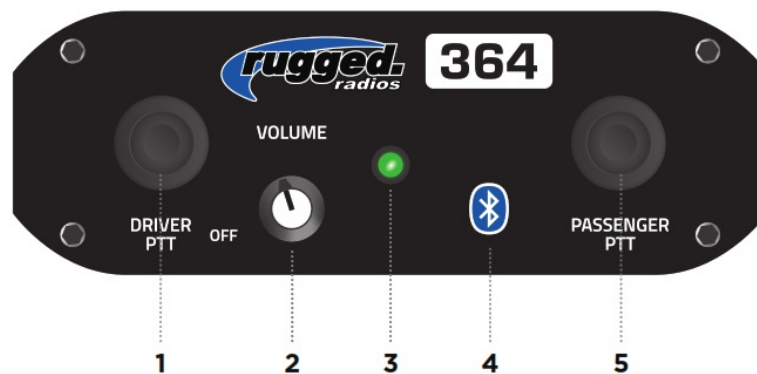


rugged RRP364-BT 4 Person Ecpandable Bluetooth Inetrcom Radio User Manual

[Home](#) » [Rugged](#) » rugged RRP364-BT 4 Person Ecpandable Bluetooth Inetrcom Radio User Manual 

RUGGED

RRP364-BT USER MANUAL



1. **DRIVER PTT** Used by the driver for transmitting over 2-Way Radio.
2. **VOLUME** Controls volume and power for in-car audio. 2-way radio and music audio are controlled by individual sources.
3. **LED** Green indicates power is on. Red indicates transmitting.
4. **BLUETOOTH** Pairing mode is active when power is on.
5. **PASSENGER PTT** Used by the passenger for transmitting over 2-Way Radio.

Contents

- [1 Intercom Operation](#)
- [2 INSTALLATION GUIDE](#)
- [3 Documents / Resources](#)
- [4 Related Posts](#)

Intercom Operation

POWER ON/OFF the intercom by rotating the volume knob clockwise/counterclockwise.

MUSIC/AUDIO input via Bluetooth connection.

Start with the intercom powered off and the Bluetooth function of your phone or device powered off.

1. Turn on the intercom.
2. Turn on the phone or device's Bluetooth.
3. Wait for "RRP364" to be displayed on the device.
4. Select "RRP364" and wait for the device to pair to the intercom.
5. If pairing is not successful, restart the process.

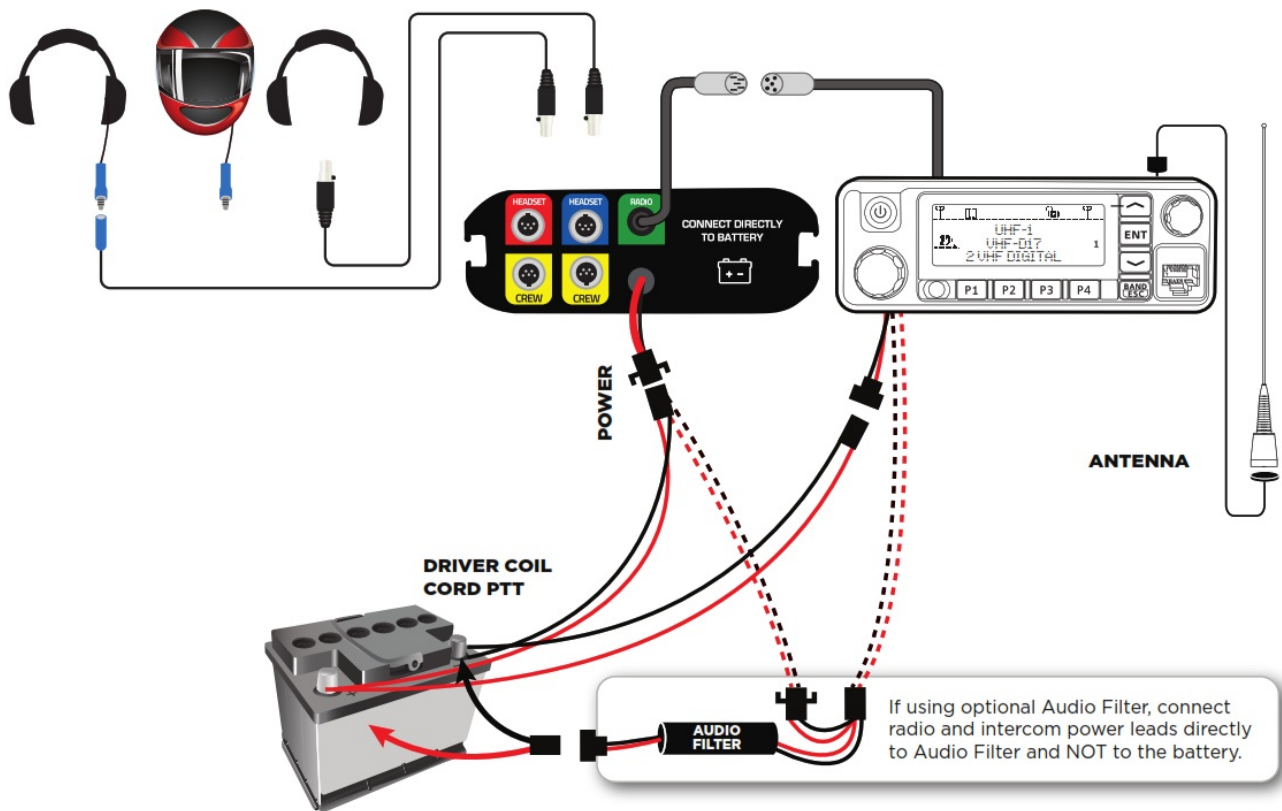
2-Way Radio Use

Received audio is controlled by your radio's volume control, not the intercom volume control. The Push-To-Talk (PTT) Button is used for transmitting over a 2-way radio connected to your intercom. To transmit, press and hold the PTT button, speak, and release when finished.

Pro Tip:

- When transmitting, the LED on both the intercom and radio will illuminate red.

INSTALLATION GUIDE



This is a universal wiring diagram. Your exact configuration might vary depending on the system purchased.



HEADSET connects driver and co-driver headsets to the intercom. Route away from power and antenna cables.



CREW HEADSETS connect rear-seat passengers.



RADIO connects to optional radio.



POWER connects +/- directly to 12v battery.


Radio & Intercom Mounting

- Both the intercom and radio come with universal mounting brackets. Vehicle specific mounting options are sold separately.
- DO NOT mount the radio or intercom near an ignition box to avoid RF interference.
- Route antenna cable away from power leads.

Connect Power

- Route all power cables directly to the battery.
- DO NOT connect inline with other components. If power is tied to ignition, lights or other power sources, a ground loop problem may occur, causing noise in the system.
- DO NOT remove any fuses that are in line with factory cables or otherwise modify power cables.

Documents / Resources

	<p>rugged RRP364-BT 4 Person Expandable Bluetooth Inetrcom Radio [pdf] User Manual RRP364-BT, 4 Person Ecpandable Bluetooth Inetrcom Radio</p>
---	--

[Manuals+](#)