



## rugged radios ROCKER-696 Intercom User Manual

[Home](#) » [rugged radios](#) » rugged radios ROCKER-696 Intercom User Manual 

### Contents

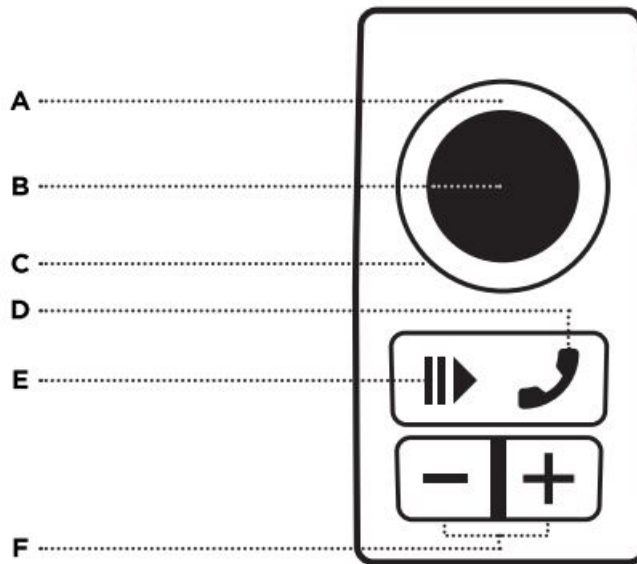
- 1 rugged radios ROCKER-696 Intercom
- 2 COMMUNICATION VOLUME/ VOX
- 3 VOX Adjustment
- 4 2-Way Radio Use
- 5 Connecting the Remote Head
- 6 Wiring Diagram
- 7 Radio & Intercom Mounting
- 8 Documents / Resources



### rugged radios ROCKER-696 Intercom



### COMMUNICATION VOLUME/ VOX



- **(A)** VOX Sensitivity – controls voice activation.
- **(B)** VOLUME/ POWER ON-OFF – controls intercom volume.

#### **LED**

- **(C)** Backlit blue LED indicates power is on.

#### **PHONE**

- **(D)** Press to answer or hang up a call

#### **PLAY /PAUSE**

- **(E)** Play or pause music

#### **SKIP/ VOLUME**

- **(F)** Long press + or – skips forward or reverse.
- **(F)** Quick press + or – to increases/decrease volume.

### **Intercom Operation**

Power On/ Off the intercom by rotating the volume control (B) clockwise/ counterclockwise.

### **VOX Adjustment**

Adjust the volume for comfort. Rotate the VOX all the way clockwise, putting the mic in an open state. Listen for the ambient sound picked up. Slowly rotate the VOX counter-clockwise one click at a time until the ambient noise is silenced. Now set VOLUME at about 50%, position the micAtIAINST7HIEUPS, and begin speaking normally. You should hear your own voice (Side-Tone). Adjust volume for comfort. If your voice does not open the mic, increase VOX slightly (clockwise). If the mic opens too easily, decrease VOX slightly (counter-clockwise).

**NOTE:** Bluetooth audio will attenuate or “dim down” when VOX activates.

### **PRO TIPS**

- The higher the background noise level (engine, wind, etc.), the further counterclockwise you will need to adjust the VOX control.
- Be sure to have all helmet/ headset microphones positioned so they are touching your lips. This ensures proper microphone activation and promotes noise canceling.
- If the music is always quiet, adjust the VOX control on the intercom until the mic turns off and music volume increases.

- Only driver can speak on cell phone call.

## Bluetooth Pairing for Music and Cell

- Start with the intercom powered off and the bluetooth function of your phone or device powered off.
- Turn on the intercom.
- Turn on the phone or device's bluetooth and begin scanning (scanning is automatic on most phones).
- Wait for "ROCKER696" to be displayed on the list of found devices.
- Select "ROCKER696" and wait for the device to pair. If pairing is not successful, restart the process.

## 2-Way Radio Use

Received audio is controlled by your radio's volume control, not the intercom volume control. Push-To-Talk (PTT) Buttons are only used for transmitting over a 2-way radio connected to your intercom. To transmit, press and hold the PTT button, speak, then release when finished.

### PRO TIPS

- PTT buttons only activate one mic (ie: Driver PTT activates Driver mic). If receiving radios do not hear your voice but hear a "click" indicating your radio is transmitting, verify your PTT and headset cables are in the correct ports.
- When transmitting the LED on both the intercom and radio will illuminate red.
- The radio's hand mic is incompatible with Intercom systems. We do recommend storing it in the vehicle in case of emergency (in which case, power off the intercom).

## AUX Out for Recording or Connection to Sound System

The rear AUX OUT port allows you to output intercom audio (including music) to a sound system or audio/video recording device using a three-conductor (TRS) 3.5mm aux cable.

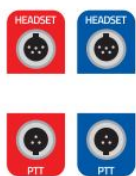
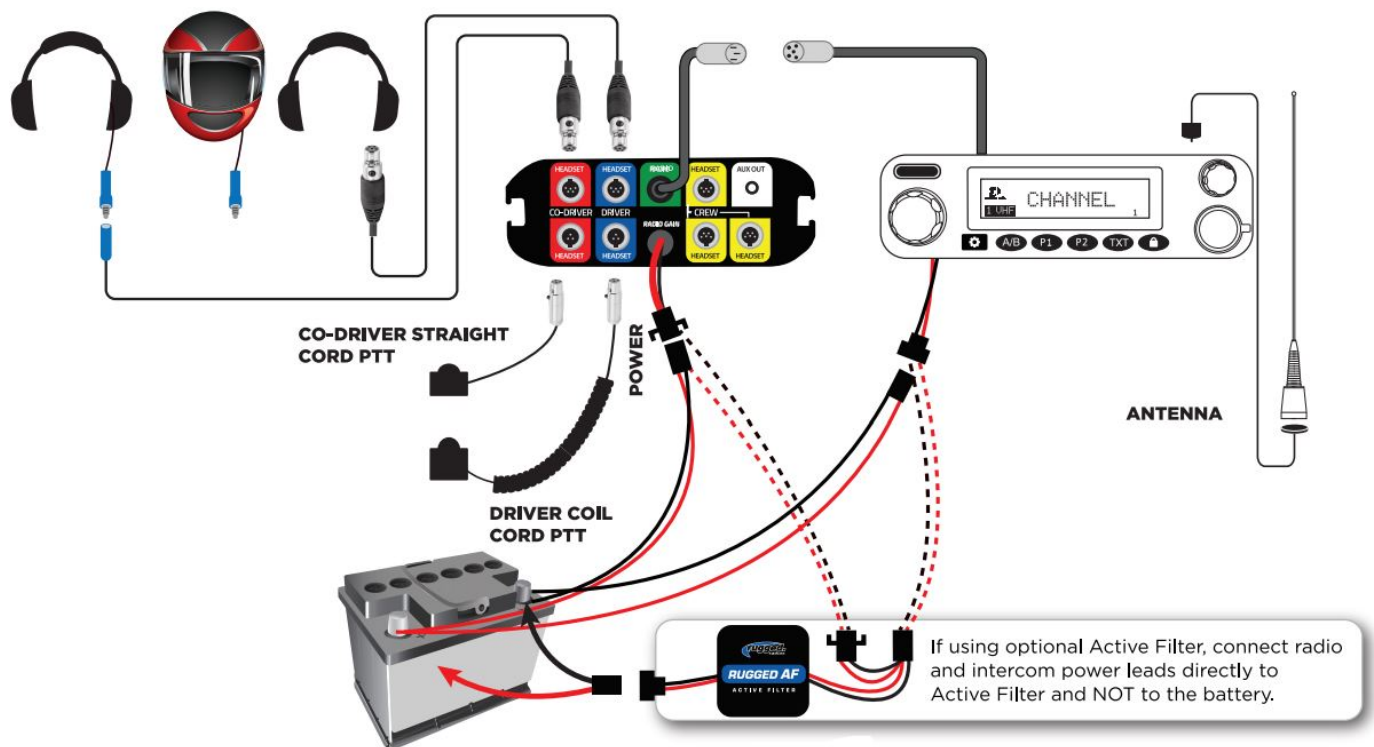
## Connecting the Remote Head



- Align the waterproof multi pin connector from the remote head cable to the front of your intercom. Note the small alignment notch at the top.
- Push the cable in slightly and thread the nut to secure the cable in place.

## Wiring Diagram

This is a universal wiring diagram. Your exact configuration might vary depending on the system purchased.



**HEADSETS** connects driver and co-driver headsets to intercom. Route away from power and antenna cables.

**PUSH-TO-TALK** connects driver and co-driver PTT to intercom.



**CREW** connects additional headsets to intercom.



**RADIO** connects to optional Radio.



**AUX OUT** audio output for sound systems or recording devices.



**POWER** connect +/- directly to 12v battery.

## Radio & Intercom Mounting

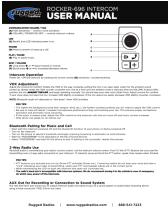
- Both the intercom and radio come with universal mounting brackets. Vehicle specific mounting options are sold separately.
- DO NOT mount the radio or intercom near an ignition box to avoid RF interference.
- Route antenna cable away from power leads and headset cables.

## Connect Power

- Route all power cables directly to the battery, away from other power/headset cables.
- DO NOT connect inline with other components. If power is tied to ignition, lights or other power sources, a ground loop problem may occur, causing noise in the system.
- DO NOT remove any fuses that are in line with factory cables or otherwise modify power cables.

Rugged Radios [www.ruggedradios.com](http://www.ruggedradios.com) 888-541-7223

## Documents / Resources



[rugged radios ROCKER-696 Intercom](#) [pdf] User Manual  
ROCKER-696, ROCKER-696 Intercom, Intercom