



RugGear RG655 Android Smartphone User Guide

[Home](#) » [RugGear](#) » RugGear RG655 Android Smartphone User Guide 

RugGear[®]
RG655



Short guide

Contents

- 1 RG655 Android Smartphone**
- 2 APPEARANCE DIAGRAM (IMG. 1)**
- 3 PREPARATION (IMG. 2)**
- 4 CHARGING (IMG. 3)**
- 5 EU-DECLARATION OF CONFORMITY**
- 6 FURTHER SAFETY ADVICE**
- 7 INFORMATION CONCERNING CE SAR CERTIFICATION (SPECIFIC ABSORPTION RATE)**
- 8 Documents / Resources**
 - 8.1 References**

RG655 Android Smartphone

(c) 2021 RugGear

Version: 2021-05-20

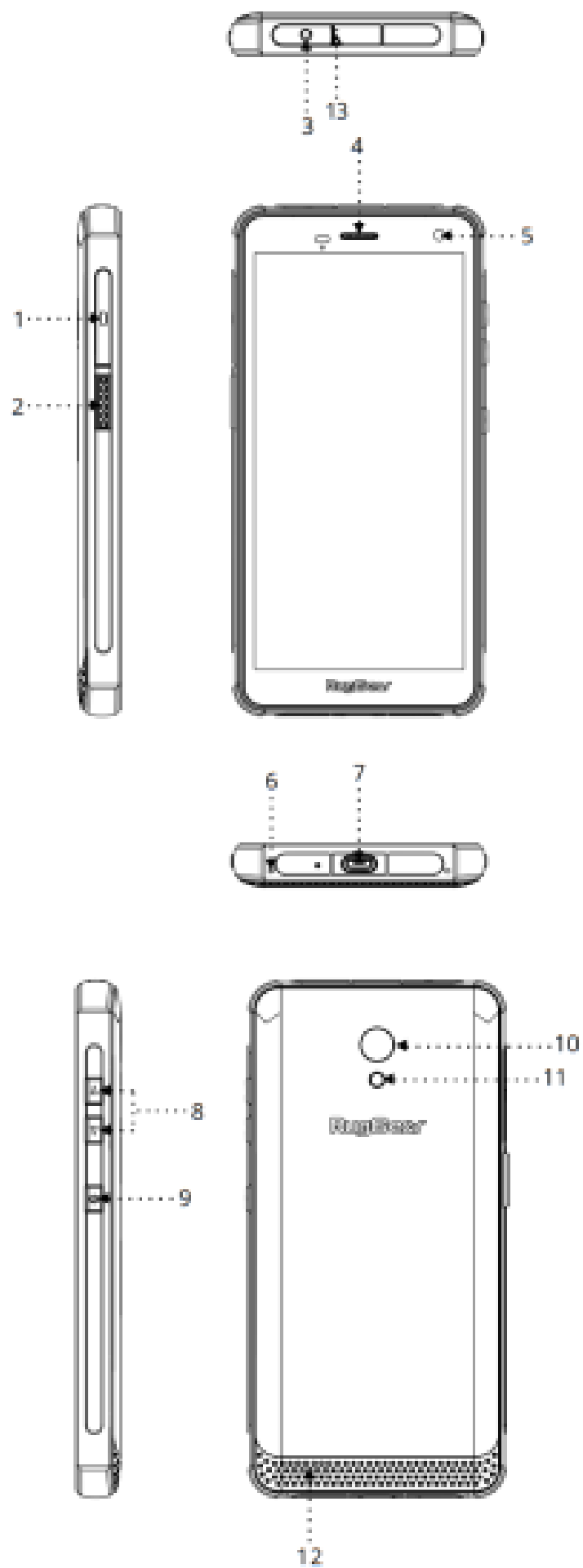
Power Idea Technology (Shenzhen) Co., Ltd.

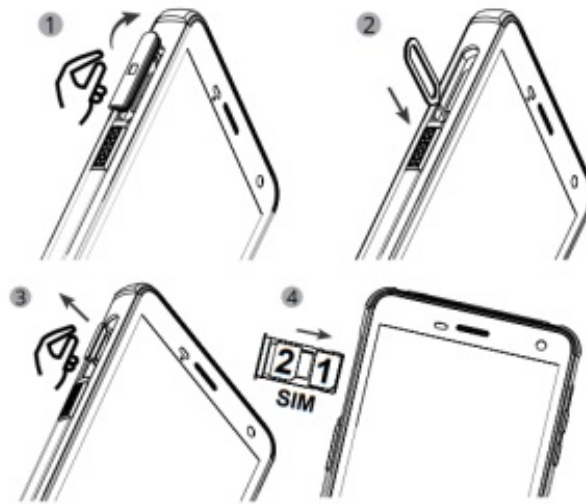
4th Floor, A Section, Languang Science&technology

Building, No.7 Xinx RD, Hi-Tech Industrial Park

North, Nanshan District, ShenZhen, P.R.C

www.RugGear.com





Connect the charging cable – see chapter 3.

This document contains information and safety regulations which must be observed for safe operation of the RG655 under the de-scribed conditions. Non-observance of this information and instruc-tions can have serious consequences and/or may violate regulations. Please read the manual and these safety instructions before using the device. In the case of any doubt, the English version shall apply. The current EU-declaration of conformity, certificates, safety instruc-tions and manuals can be found at www.RugGear.com, or requested from Power Idea Technology (Shenzhen) Co., Ltd..

APPEARANCE DIAGRAM (IMG. 1)

1. SIM Card Tray: Insert a SIM Card and Micro SD Card.
2. Custom Button: Specified application/switch shortcut key, which needs to be set via the system's „Custom Button“ before use.
3. Earphone Jack: Connect 3.5mm earphones
4. Receiver
5. Front Camera
6. Microphone
7. USB Port: Micro USB port for mobile phone charging and data transmission.
8. Increase and decrease the volume: To adust the volume.
9. Power Button: Long press to turn the power on/off. Short press to turn on/off standby mode.
10. Rear Camera

11. Flashlight
12. Speakers
13. Secondary Microphone

PREPARATION (IMG. 2)

Nano-SIM Card and Micro SD Card Installation

- A) Open the SIM card tray rubber plug to insert the SIM card pin in the card hole of the mobile phone and push to eject the SIM card tray.
- B) After the SIM card tray is removed as shown in the figure, the Micro SD card/Nano SIM card is installed in the corresponding position of the card tray.
- C) Insert the SIM card tray into the phone's SIM card slot and fasten the SIM card tray rubber plug.

Note:

After installation, please make sure that the SIM card tray and the rubber plug for the earphone port are intact and closed so as to be waterproof and dustproof. In this regard, no further special statement will be made in later chapters.

Tips for installing/removing a memory card:

To store additional multimedia data, a memory card must be inserted. This device supports a Micro SD memory card up to 128GB (microSDHC, FAT32 format).

CHARGING (IMG. 3)

Connect the charging cable to the mobile phone to start charging in the direction as shown in the figure. Please do not continue charging when the battery is full. Only use RugGear licensed chargers and cables. Unlicensed chargers or cables can cause the batteries to explode or damage your device. You can only charge the device at an ambient temperature range of 0 °C to 45 °C. The normal operating temperature of this mobile phone is -10 °C to 55 °C. In order to ensure the normal phone functions, do not use this phone outside the temperature range.

EU-DECLARATION OF CONFORMITY



The EU-declaration of conformity can be found at the end of this manual.

FURTHER SAFETY ADVICE



Use careful with the earphone maybe possible excessive sound pressure from earphones and headphones can cause hearing loss.

- Adapter shall be installed near the equipment and shall be easily accessible.
- The product shall only be connected to a USB interface of version USB2.0.

Caution: risk of explosion if battery is replaced by an incorrect type. Dispose used batteries according to the instructions.



This symbol on your product, the battery and the accessories means that these products must be taken to collection points at the end of their life.

INFORMATION CONCERNING CE SAR CERTIFICATION (SPECIFIC ABSORPTION RATE)

The SAR limit for Europe is 2.0 W / kg. The device has been tested against this SAR limit. The highest SAR value

reported under this standard during product certification for use in the ear is 0.59 W / kg and when properly worn on the body is 1.86 W / kg. This device was tested for typical body-worn operations with the back of the handset kept 5mm from the body. The device complies with RF specifications when the device is used at 5mm from your body. The use of belt clips, holsters and similar accessories should not contain metallic components in their assembly. The use of accessories that do not fulfill these requirements may not comply with RF exposure requirements, and should be avoided.

For European customers please check: <https://ruggear.com/warranty-terms/>

For Customers in Americas please check: <https://ruggear.com/terms-and-conditions-americas/>

For FCC information, please go to www.RugGear.com and find it under the “Support” section.

MAXIMUM OUTPUT POWER

Frequency bands	Maximum output power
GSM 900	34dBm
DCS 1800	32dBm
WCDMA 900	25dBm
WCDMA 2100	25dBm
LTE Band 1	25dBm
LTE Band 3	25dBm
LTE Band 7	25dBm
LTE Band 8	25dBm
LTE Band 20	25dBm
LTE Band 28	25dBm
LTE Band 38	25dBm
LTE Band 40	25dBm
WiFi	20dBm
WiFi 2.4G	20dBm
WiFi 5G	15dBm
BT	15dBm

Restrictions in the 5 GHz band:

According to Article 10 (10) of Directive 2014/53/EU, the packaging shows that this radio equipment will be subject to some restrictions when placed on the market in Belgium (BE), Bulgaria (BG), the Czech Republic (CZ), Denmark (DK), Germany (DE), Estonia (EE), Ireland (IE), Greece (EL), Spain (ES), France (FR), Croatia (HR), Italy (IT), Cyprus (CY), Latvia (LV), Lithuania (LT), Luxembourg (LU), Hungary (HU), Malta (MT), Netherlands (NL), Austria (AT), Poland (PL), Portugal (PT), Romania (RO), Slovenia (SI), Slovakia (SK), Finland (FI), Sweden (SE), Turkey (TR), Norway (NO), Switzerland (CH), Iceland (IS), and Liechtenstein (LI). The WLAN function for this device is restricted to indoor use only when operating in the 5150 to 5350 MHz frequency range.

	AT	BE	BG	HR	CY	CZ	DK
	EE	FI	FR	DE	EL	HU	IE
	IT	LV	LT	LU	MT	NL	PL
	PT	RO	SK	SI	ES	SE	UK

EU – Declaration of Conformity according to directives 2014/53/EU and 2011/65/EU 2015/863/EU

The company Power Idea Technology (Shenzhen) Co., Ltd. declares under its sole responsibility that the product to which this declaration relates is in accordance with the provisions of the following data, directives and standards:

Name & address of the manufacturer	Power Idea Technology (Shenzhen) Co., Ltd. 4th Floor, A Section, Languang Science&technology Building, No.7 Xinx RD, Hi-Tech Industrial Park North, Nanshan District
Description of the device:	LTE SMARTPHONE
Type design on(s):	RG725, PSM01E
Trademark:	RugGear
Conformity statement 2014/53/EU issued by	TIMCO ENGINEERING, INC. P.O.BOX 370 NEWBERRY, FL 32669
Conformity statement 2015/863/EU amending 2011/65/EU issued by	SGS-CSTC Standards Technical Services Co., Ltd. Guangzhou Branch 198 Kezhu Road, Sciencetech Park Guangzhou Economic & Technology Development District, Guangzhou, China 510663

Applied harmonized standards

EN 301 908-1 V11.1.1 (2016-07); ETSI EN 301 908-1 V13.1.1 (2019-11); ETSI EN 301 908-2 V13.1.1 (2020-06); ETSI EN 301 908-13 V13.1.1 (2019-11); ETSI EN 301 511 V12.5.1 (2017-03); ETSI EN 300 330 V2.1.1 (2017-02); ETSI EN 303 413 V1.1.1 (2017-06); ETSI EN 300 328 V2.2.2 (2019-07); ETSI EN 301 893 V2.1.1 (2017-05); ETSI EN 300 440 V2.2.1 (2018-07); EN 50663:2017; EN 62479:2010; EN55032: 2015+A11:2020; EN55035:2017+A11:2020; ETSI EN 301 489-1 V2.2.3 (2019-11); ETSI EN 301 489-3 V2.1.1 (2019-03); ETSI EN 301 489-17 V3.2.4 (2020-09); Draft ETSI EN 301 489-19 V2.2.0 (2020-09); Draft ETSI EN 301 489-52 V1.1.2 (2020-12); EN 50360:2017; EN 50566:2017; EN 62209-1:2016; EN 62209-2:2010+A1:2019; EN 62479:2010; EN 62368-1:2014+A11:2017

Signed for and on behalf of:

Shenzhen, 2021-04-26

Place and date of issue

Power Idea Technology (Shenzhen) Co., Ltd

www.ruggear.com


4F Languang Sc & Tech Bldg A, 27 Gaoxin

North 6 Ave, Nanshan, Shenzhen, China 518057



Alex Ma, R&D Director

Documents / Resources

 A black smartphone with a white border, labeled 'RugGear RG655' at the top and 'Short guide' at the bottom.	<p>RugGear RG655 Android Smartphone [pdf] User Guide RG655, RG655 Android Smartphone, Android Smartphone, Smartphone</p>
---	--

References

- [Home - Rugged phones and devices](#)
- [Home - Rugged phones and devices](#)
- [User Manual](#)

[Manuals+](#), [Privacy Policy](#)

This website is an independent publication and is neither affiliated with nor endorsed by any of the trademark owners. The "Bluetooth®" word mark and logos are registered trademarks owned by Bluetooth SIG, Inc. The "Wi-Fi®" word mark and logos are registered trademarks owned by the Wi-Fi Alliance. Any use of these marks on this website does not imply any affiliation with or endorsement.