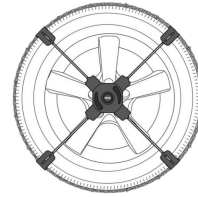


RUD
TA39 RU Dcomfort Click



RUD TA39 RU Dcomfort Click Instruction Manual

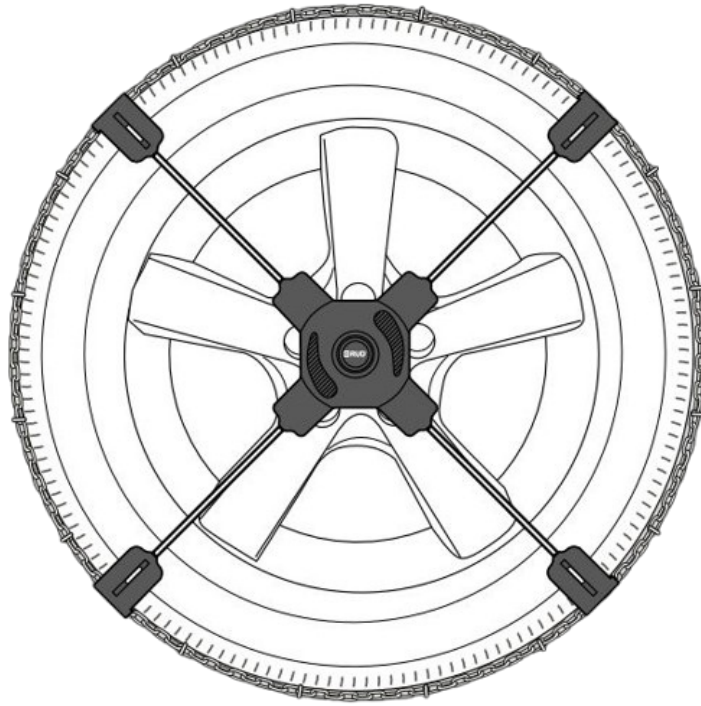
[Home](#) » [RUD](#) » RUD TA39 RU Dcomfort Click Instruction Manual 

Contents

- [1 RUD TA39 RU Dcomfort Click](#)
- [2 Product Information](#)
- [3 Product Usage Instructions](#)
- [4 FAQ](#)
- [5 Kit contents](#)
- [6 Adapter fastening](#)
- [7 Sizing](#)
- [8 Rim distance adjustment](#)
- [9 Fitting](#)
- [10 Removal](#)
- [11 ABOUT COMPANY](#)
- [12 Documents / Resources](#)
 - [12.1 References](#)
- [13 Related Posts](#)



RUD TA39 RU Dcomfort Click



Product Information

Specifications

- **Brand:** RUDcomfort Click2Go
- **Model:** Click2Go V
- **Product Type:** U-Adapters kit
- **Manufacturer:** RUD Ketten Rieger & Dietz GmbH u. Co.KG
- **Country of Origin:** Germany

Product Usage Instructions

Adjustments Fitting

Thank you for choosing RUDcomfort Click2Go! Before the winter season begins or during tire changes, follow the steps below to prepare the chain and fasten the adapter to your car's alloy rim:

- **Step 1: Kit Contents**

Check the contents of the kit to ensure you have all the necessary components for the installation process.

- **Step 2: Adapter Fastening**

Follow the instructions provided in pages 4-5 of the manual for proper adapter fastening. Ensure a secure attachment to your car's alloy rim.

- **Step 3: Circumference Adjustment**

Refer to the guidelines on pages 6-7 for adjusting the circumference of the adapter to fit your specific tire size (e.g., 215/55 R17).

- **Step 4: Distance Adjustment**

Adjust the distance between the adapter and the wheel rim to approximately 1.5cm for optimal performance.

- **Step 5: Mounting and Demounting**

Follow the instructions provided by RUD for proper mounting and demounting procedures to ensure safe and

efficient use of the U-Adapters kit.

FAQ

- **When should I install the U-Adapters kit?**

It is recommended to install the U-Adapters kit before the winter season begins, during tire changes, or at any convenient time.

- **How do I adjust the circumference of the adapter?**

Refer to the instructions in the manual for adjusting the circumference to match your tire size.

- **What is the recommended distance between the adapter and the wheel rim?**

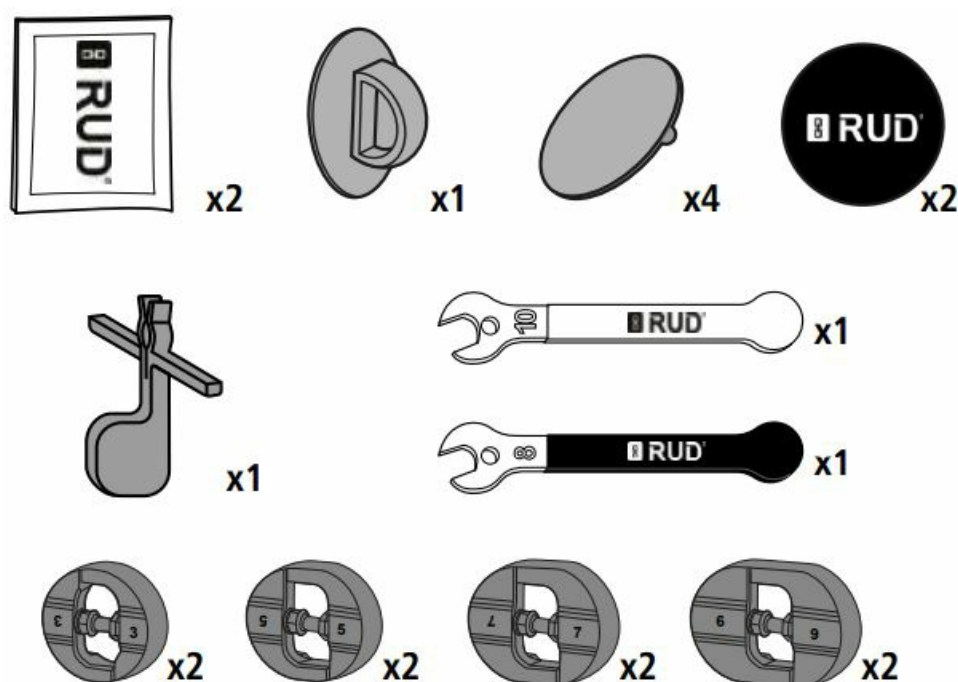
The recommended distance is approximately 1.5cm for optimal performance.

Thank you for choosing RUDcomfort Click2Go!

RUD suggests performing the operations to prepare the chain and fasten the adapter to your car's alloy rim before the winter season begins, during tire changes, or at a quiet time. Inside the package, you will find everything you need to perform the necessary operations.

Kit contents

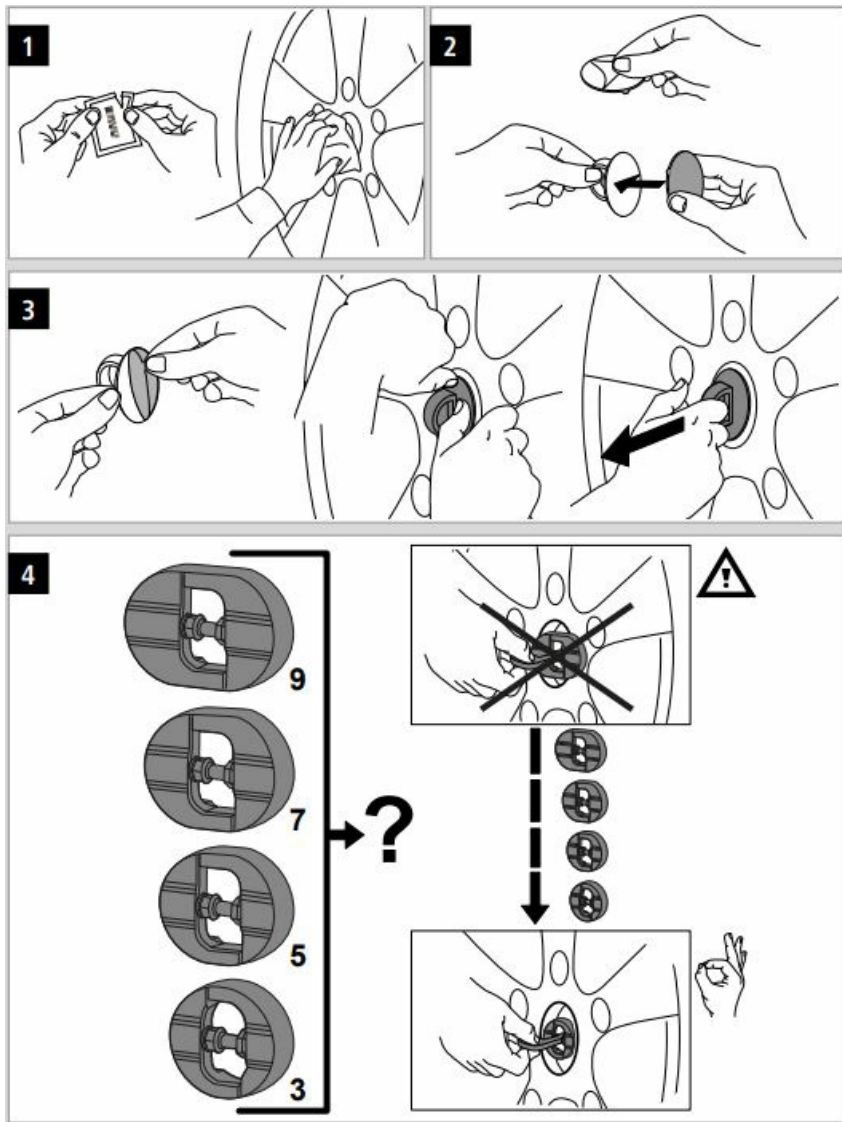
Adapter fastening

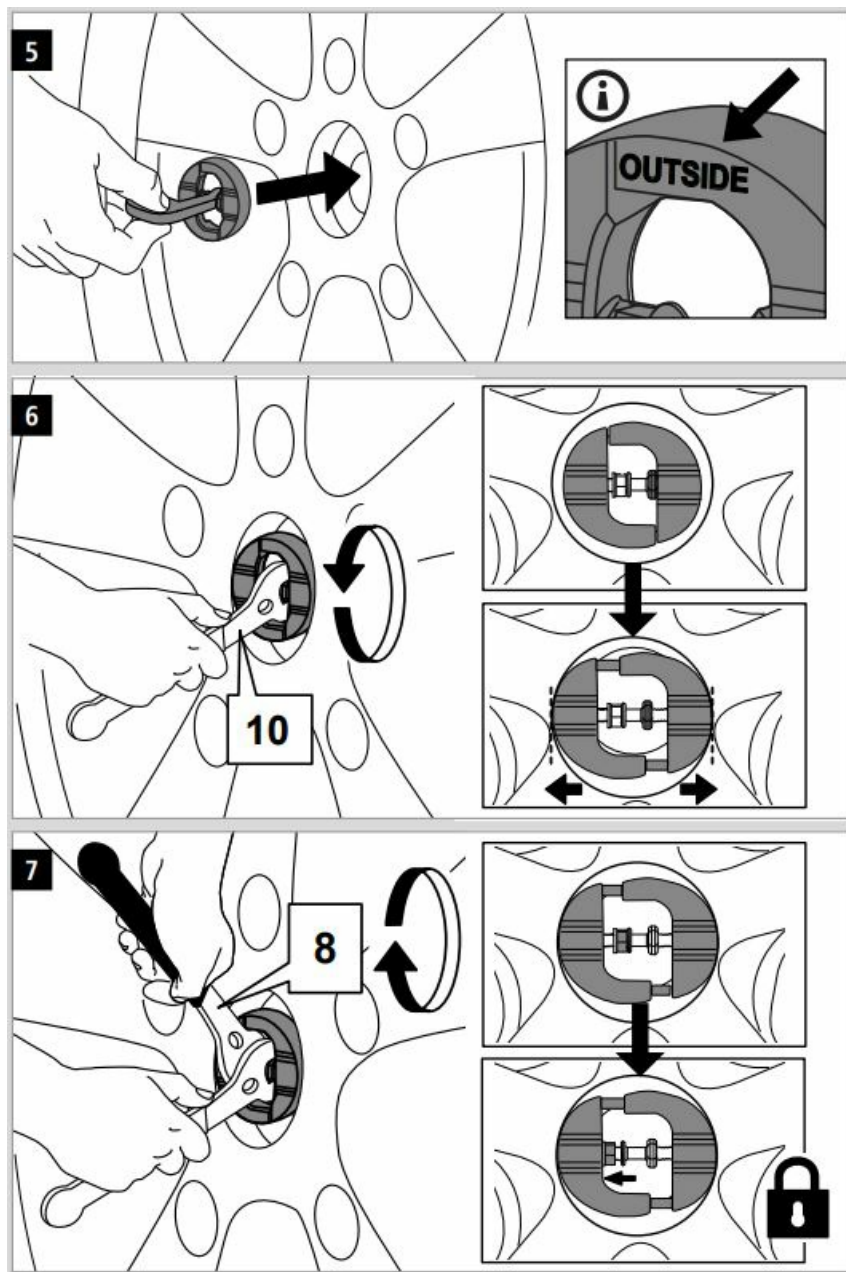


Sizing

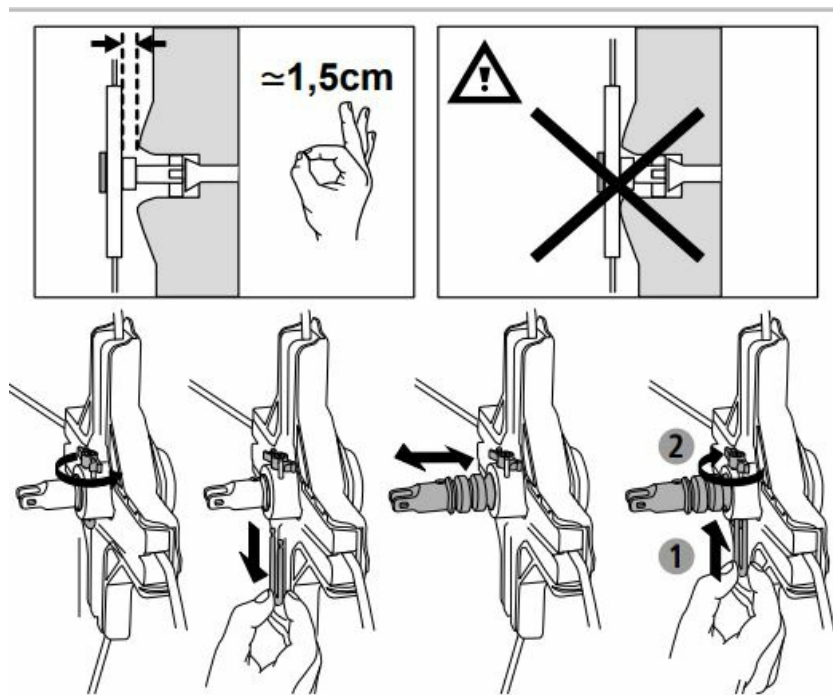


Adapter fastening

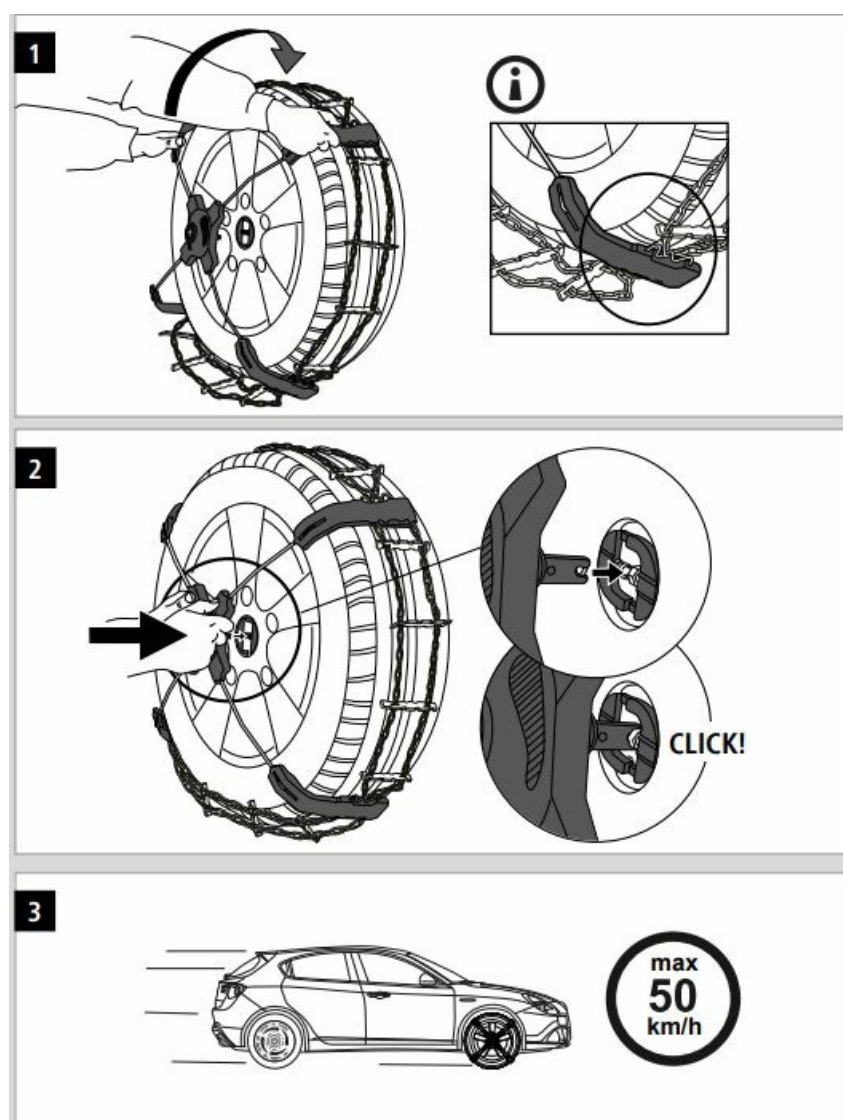




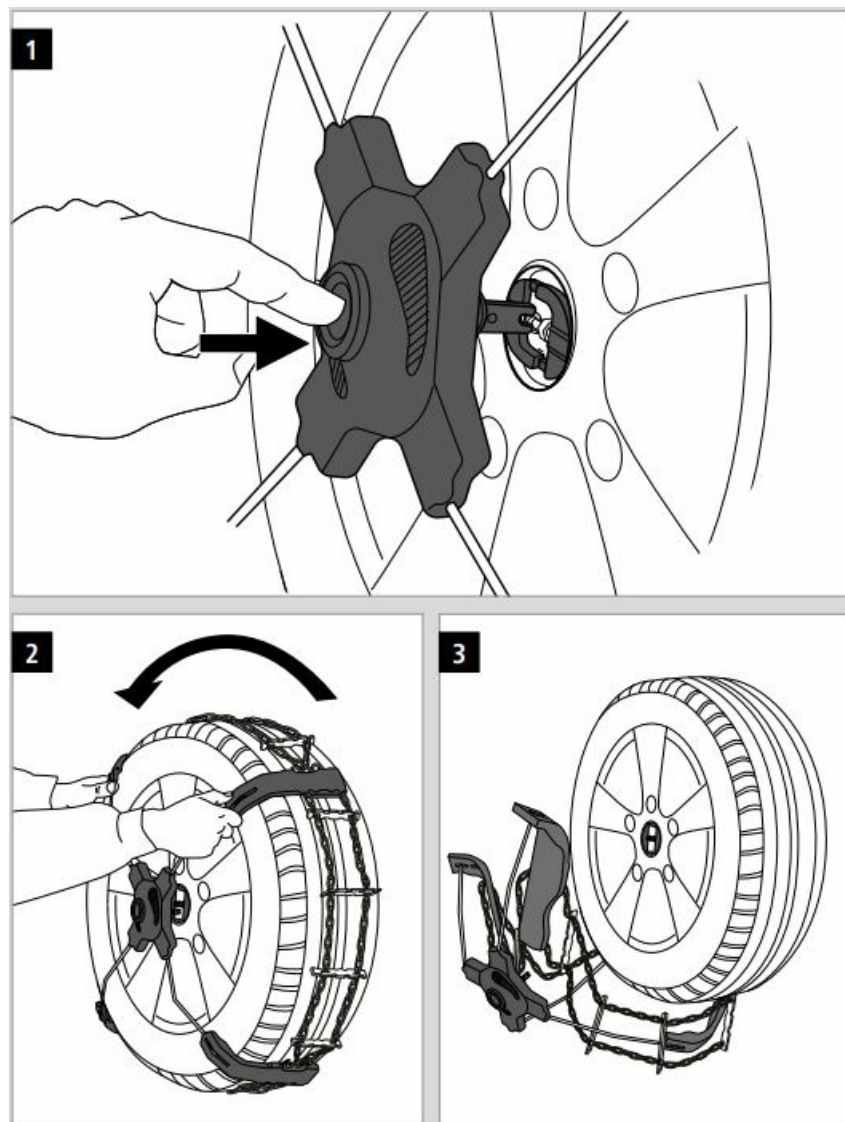
Sizing



Fitting



Removal




NOTES

Please read carefully the operating instructions and keep them for later use. When fitting snow chain it's recommended to wear a safety vest. Please ensure that your snow chains are the right size for the tyres mounted on your vehicle. Please follow the vehicle manufacturer's recommendations in the instruction manual regarding the use of chains. Do not drive at more than 50 km/h with snow chains. The country-specific regulations must be observed. The regulations of the Road Traffic Act are to be observed for the towing process. The car's driving characteristics change when snow chains are fitted. On roads without ice or snow the breaking distance becomes longer. Avoid spinning the wheels. When the links show more than 30% wear, chains should not be used anymore; they could break. Rinse your chain in warm water after use, and allow to dry. Anti-skid chains must be stored in a dry place and protected from chemical influences. Please, observe the local disposal regulations. The snow chain consists mainly of steel as a raw material and can be recycled as scrap at your local waste disposal company. In case of a complaint, we accept our packaging back through our sales network. Please register complaints at www.rud.com. Technical changes reserved.

ABOUT COMPANY

- RUD Ketten
- Rieger & Dietz GmbH u. Co.KG
- Friedensinsel
- 73432 Aalen – GERMANY
- **Tel.** +49 7361 504-0
- rudketten@rud.com
- www.rud.com

Documents / Resources

	<p>RUD TA39 RU Dcomfort Click [pdf] Instruction Manual TA39, 4719235, TA39 RU Dcomfort Click, TA39, RU Dcomfort Click, Dcomfort Click, Click</p>
---	--

References

- [8 Tradition in Dynamic Innovation: Die RUD Gruppe: RUD](#)
- [User Manual](#)

Manuals+, Privacy Policy

This website is an independent publication and is neither affiliated with nor endorsed by any of the trademark owners. The "Bluetooth®" word mark and logos are registered trademarks owned by Bluetooth SIG, Inc. The "Wi-Fi®" word mark and logos are registered trademarks owned by the Wi-Fi Alliance. Any use of these marks on this website does not imply any affiliation with or endorsement.