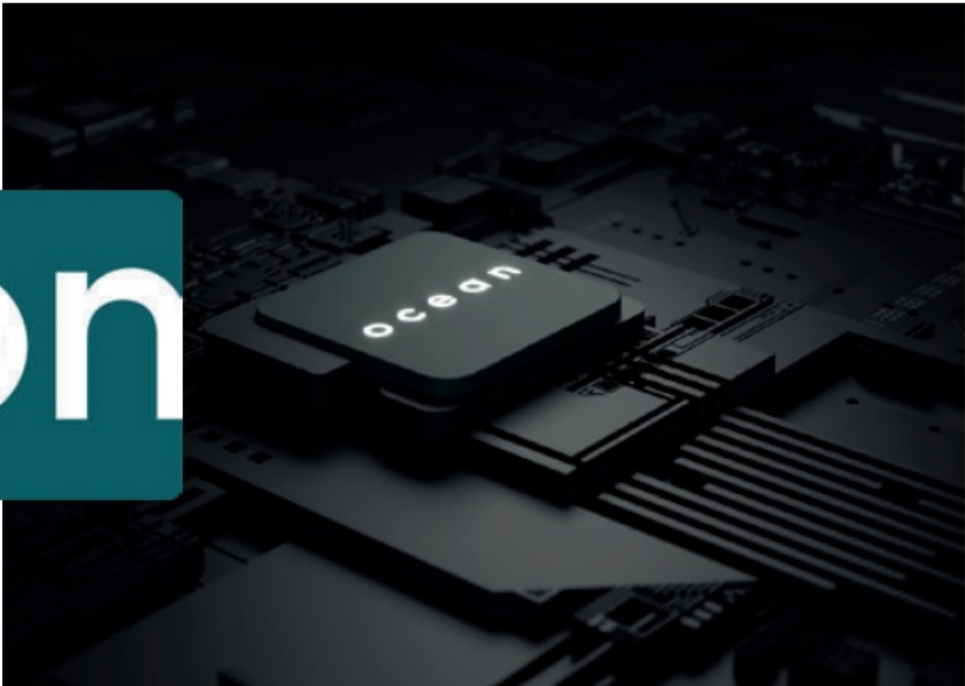


On Ocean Next Saving and Exporting a Measurement Instructions

[Home](#) » [RTI](#) » On Ocean Next Saving and Exporting a Measurement Instructions 



RTI Best Practice Guide
Ocean Next:
Saving and Exporting a Measurement



Contents

- 1 Overview
- 2 Make Measurements with Quick Check.
- 3 Documents / Resources
 - 3.1 References
- 4 Related Posts

Overview

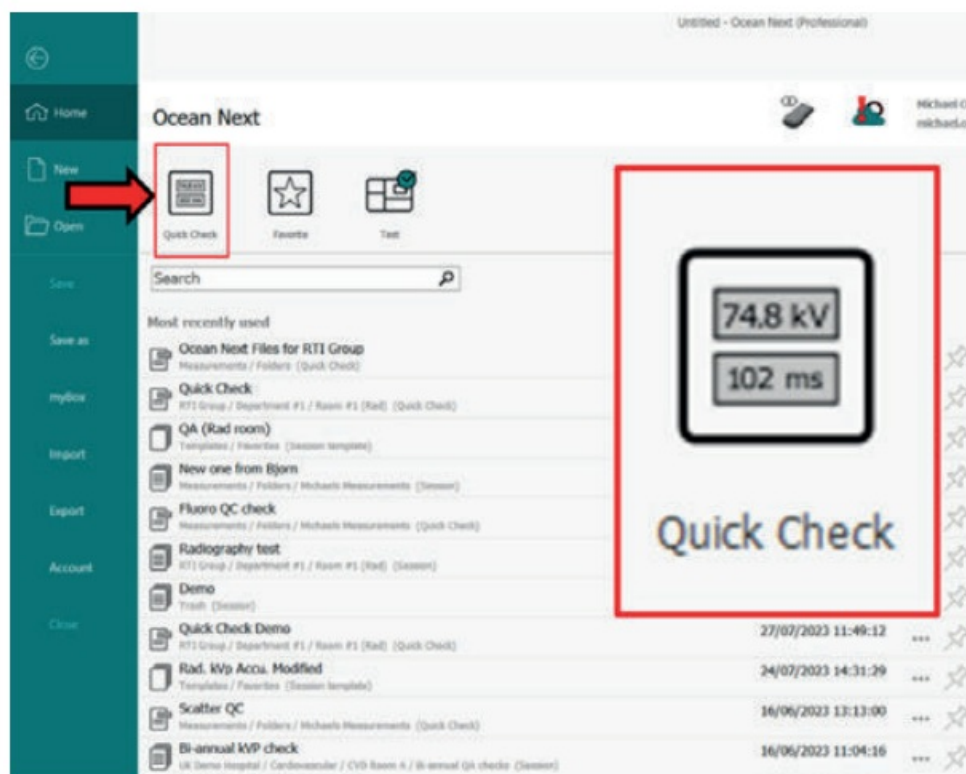
Ocean Next is the ultimate tool for your X-ray QA testing, providing full traceability and efficiency for all of your testing. With a built-in database, you can manage all of your QA measurements, scheduling, analysis and reporting within the software.

The first step is to ensure that you save your measurements. This guide will demonstrate how to save (using Quick Check) and then guide you through how to export any measurement from your database.

Remember, once you have saved a measurement in Ocean, you can always go back and open it at a later time, so you always have full traceability from the initial X-ray shot all the way through to your report.

Make Measurements with Quick Check.

1. Open Ocean Next and you will be directed to the Home screen.
2. Select “Quick Check”.

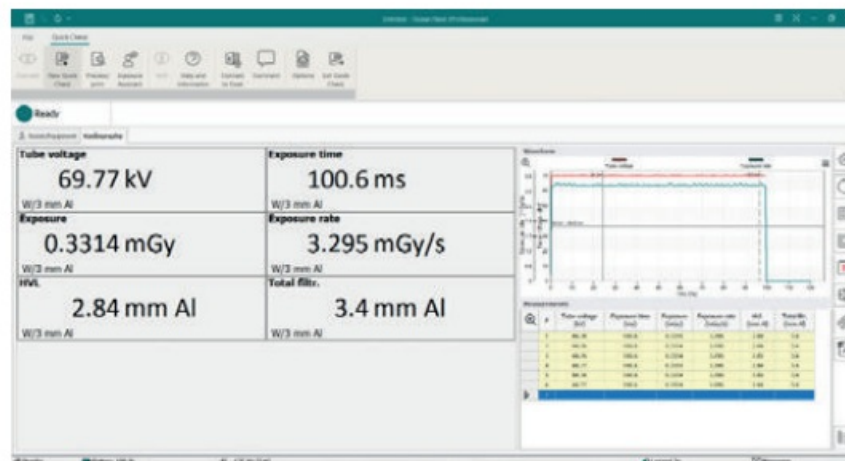


3. If connecting for the first time, select your connected meter from the list (can be Bluetooth or via USB cable).



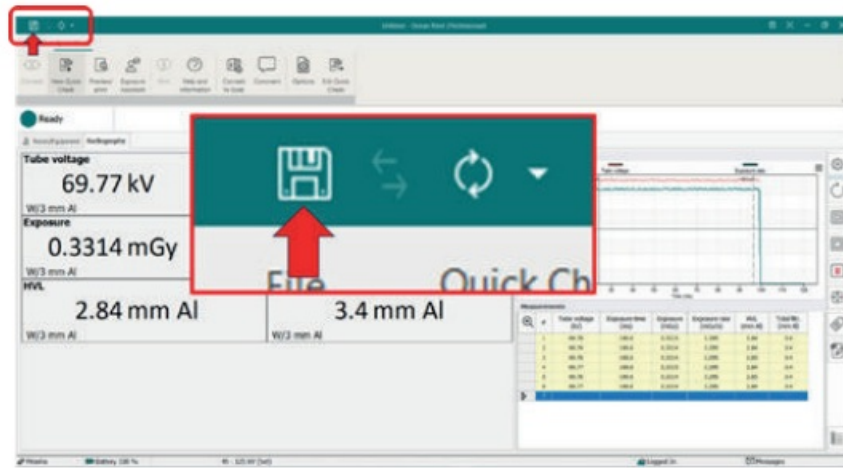
4. Make measurements in Quick Check.

- You can make all of your measurements first before saving. The exposure log (bottom right) will show all measurements in this Quick Check. The “Save” function will apply to the entire Quick Check (you do not need to save individual rows).

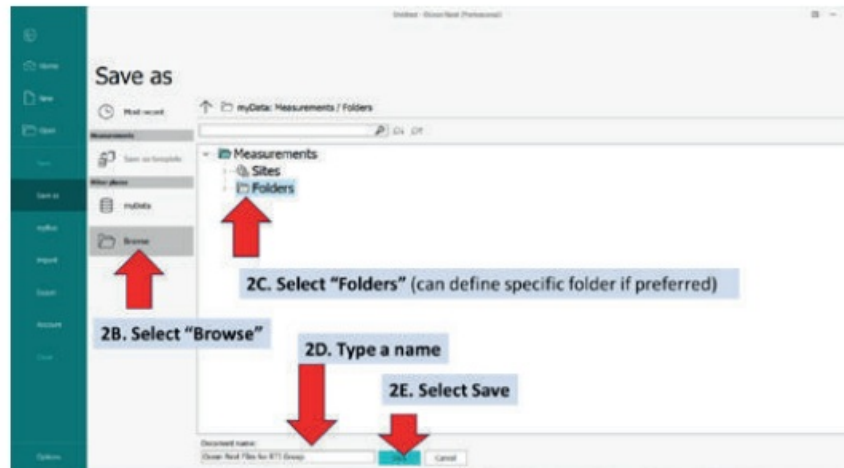


SAVE Measurements with Quick Check

1. Click the “SAVE” icon in the top-left of the screen.

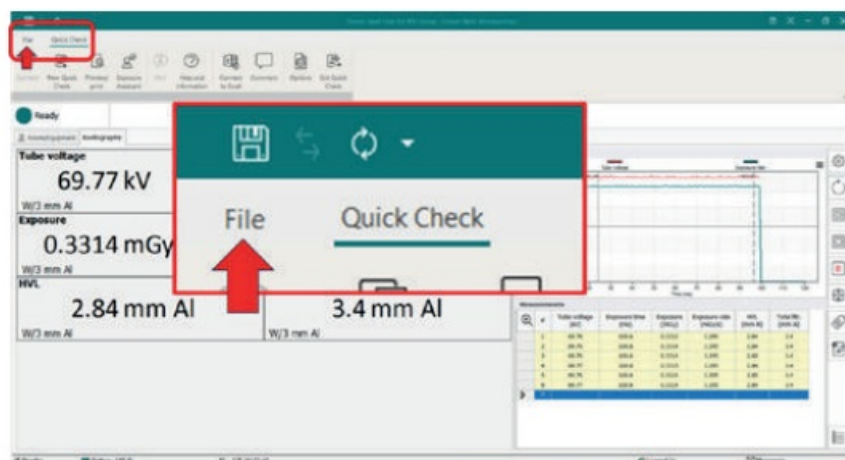


2. You will be navigated to "Save as" screen.
 - A) Here you save your Quick Check to the database.
 - B) Select "Browse".
 - Select "Folders" (you can define specific folder if preferred).
 - D) Type a name (bottom of screen).
 - E) Select "Save".

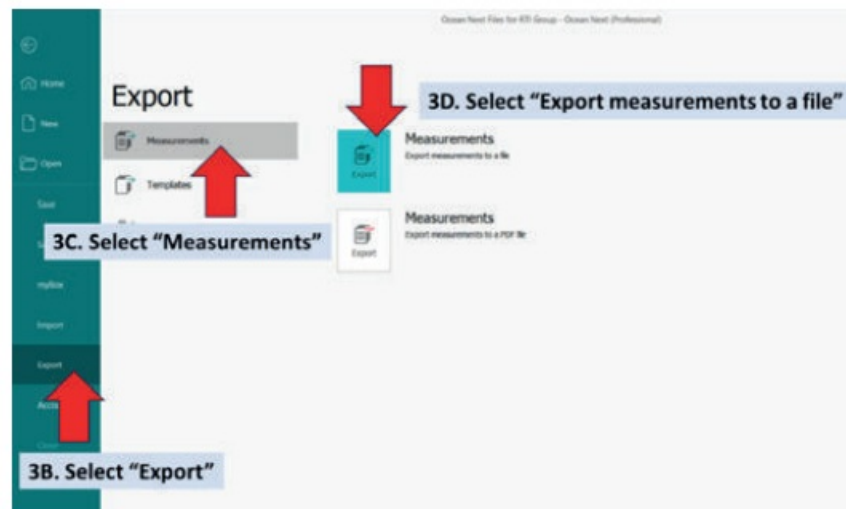


EXPORT Measurements

3. You will be navigated back to Quick Check) A) On the Quick Check screen, select "File" .



- B) Select "Export" on the left menu bar.
- C) Select "Measurements".
- D) Select "Export measurements to a file".



E. Navigate to “Folders” section

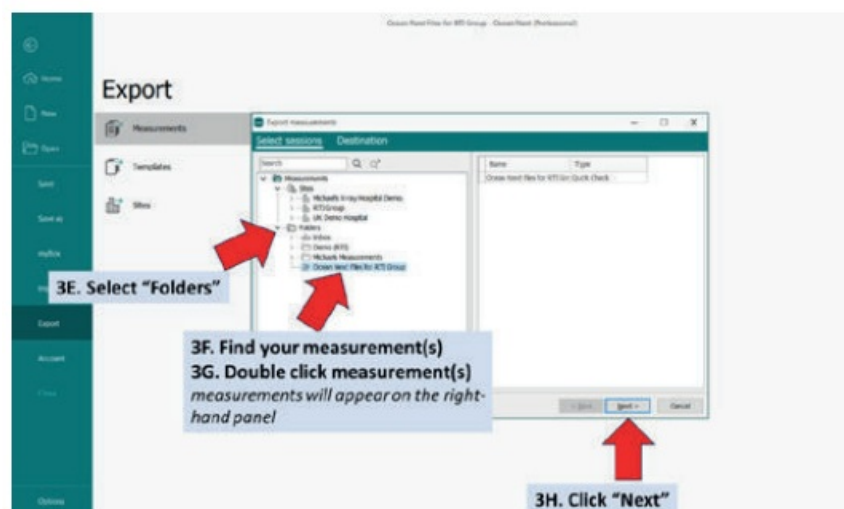
F. Find your measurement(s) to Export

G. Double click’ measurement(s)

• (Alternatively, ‘drag-and-drop’ to the right)

• Selected measurements will appear in the righthand panel

H. Click “Next

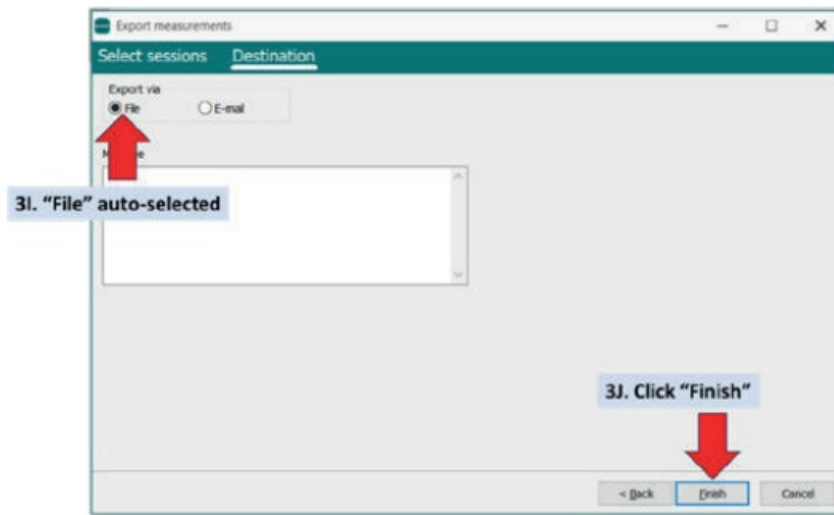


I. “File” auto-selected

• “File” will save the measurement to your local PC, so you can send it later

• “Email” will directly attach to an email

J. Click “Finish”



RTI Group Headquarters Flöjelbergsgatan 8C SE-431 37 Mölndal, SW EDEN	Phone: +46 (0) 31 746 36 00 sales@rtigroup.com www.rtigroup.com	RTI Group North America 33 Jacksonville Road, Bldg . 1 Towaco, NJ 07082, USA	Phone: +1 800-222-7537 sales.us@rtigroup.com www.rtigroup.com
--	---	---	---

Documents / Resources

	RTI On Ocean Next Saving and Exporting a Measurement [pdf] Instructions On Ocean Next Saving and Exporting a Measurement, On Ocean Next Saving and Exporting a Measurement, Next Saving and Exporting a Measurement, Saving and Exporting a Measurement, Exporting a Measurement, Measurement
---	--

References

- [User Manual](#)

Manuals+, Privacy Policy

This website is an independent publication and is neither affiliated with nor endorsed by any of the trademark owners. The "Bluetooth®" word mark and logos are registered trademarks owned by Bluetooth SIG, Inc. The "Wi-Fi®" word mark and logos are registered trademarks owned by the Wi-Fi Alliance. Any use of these marks on this website does not imply any affiliation with or endorsement.