



# RSHTECH RSH-319 Hard Drive Enclosure Instruction Manual

[Home](#) » [RSHTECH](#) » RSHTECH RSH-319 Hard Drive Enclosure Instruction Manual 

# RSHTECH

3.5" Hard Drive Enclosure  
RSH-319

## Contents

- [1 RSH-319 Hard Drive Enclosure](#)
- [2 Packing Listing:](#)
- [3 Technical Data](#)
- [4 Hard Drive Installation Steps](#)
- [5 Partitioning and formatting:](#)
- [6 The following are the partitioning and formatting steps of the Win7 system:](#)
- [7 The following are the partitioning and formatting steps of the MacOS 10 system:](#)
- [8 Remove Device](#)
- [9 FAQ](#)
- [10 Safety Instructions](#)
- [11 Documents / Resources](#)
  - [11.1 References](#)

## RSH-319 Hard Drive Enclosure



### Packing Listing:

- 1 x HDD enclosure
- 1 x 12V/2A Power adapter
- 1 x USB 3.0 cable
- 4 xScrews
- 1 x Screwdriver
- 1 x Instruction Manual

### Technical Data

Produktname:	3.5" Hard Drive Enclosure
Color	Black
Supported drives	3.5" SATA I /II/III HDD/SSD(Up to 16TB)
interface	USB3.0 to SATA III
Data Connectr Type	USB3.0(Backward compatible with usb2.0)
Hard Drive Format	GPT format: Supported
	MBR format Supported when capacity <2TB
Maximum height of drives	Height of up to 27 mm supported
Hot Plug, Plug&Play	Supported
UASP protocol	Supported
Automatic sleep	Supported

Licenses	CE,FCC,RoHS
Material	ABS plastic
Operation & Storage environment	Storage: -20 to 60°C; Operation: 5 to 55°C
Supported operating systems	Windows2000/XP/Vista/7/8/10; Mac 9.0 or above

## Hard Drive Installation Steps

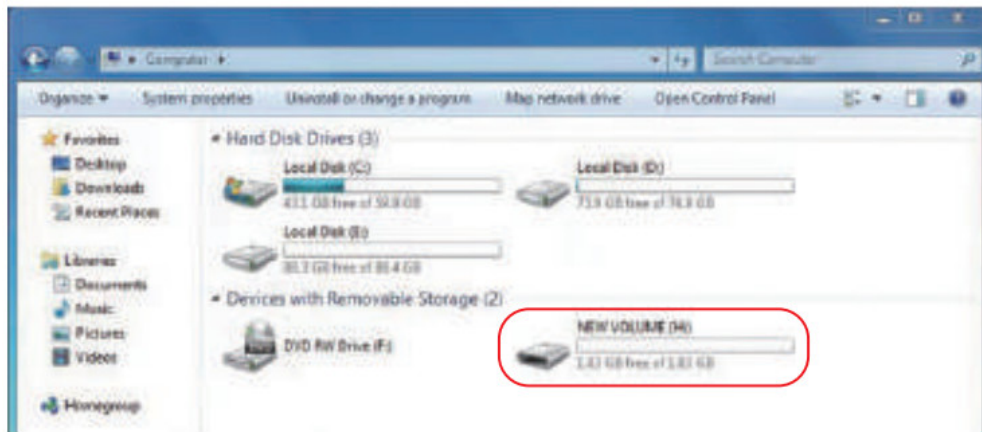


## Partitioning and formatting:

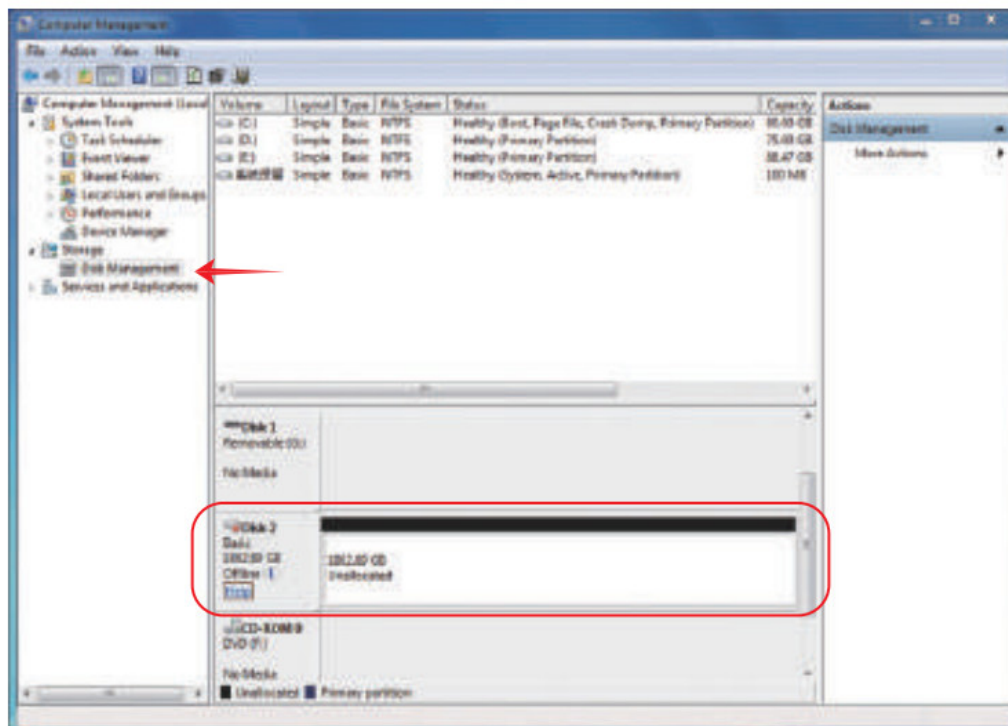
### Note:

If your hard drive is a newly purchased or is part of the monitor and server hard drive, the computer may not be able to directly identify it. You must partition and format the hard drive before using it.

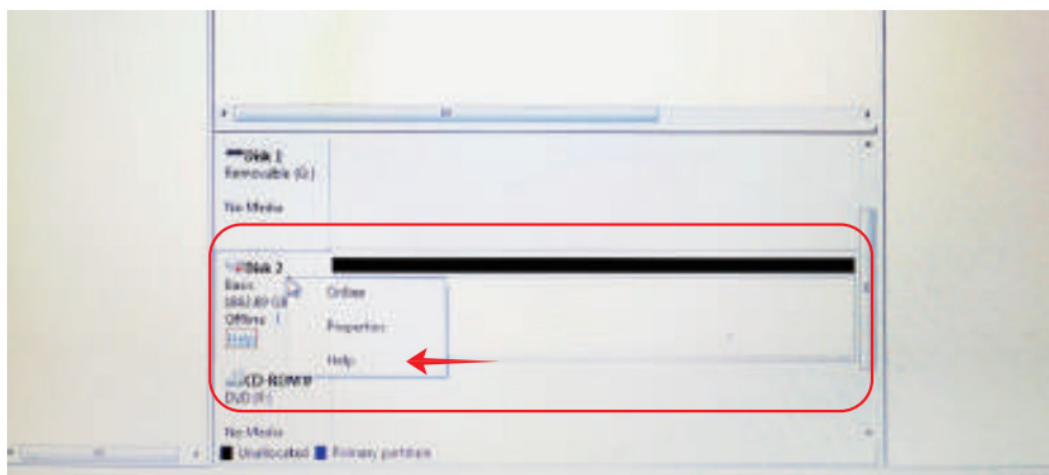
1. If your hard drive has been partitioned and formatted. You can connect the device directly and start using it. A new volume will appear on your computer (see figure below)



2. If your hard drive is partitioned and formatted but no new hard drive 'appears on the computer after connecting, check that the hard drive is installed and turned on. Then right-click on the "Computer" and select "Manage". After entering Computer Management, select "Disk Management" to see if a new disk or a non-partitioned disk is presented. If the hard drive is offline, right-click and select online. If the hard drive is not assigned, select "Change drive and path", then select "Add" and click "OK" as shown below:

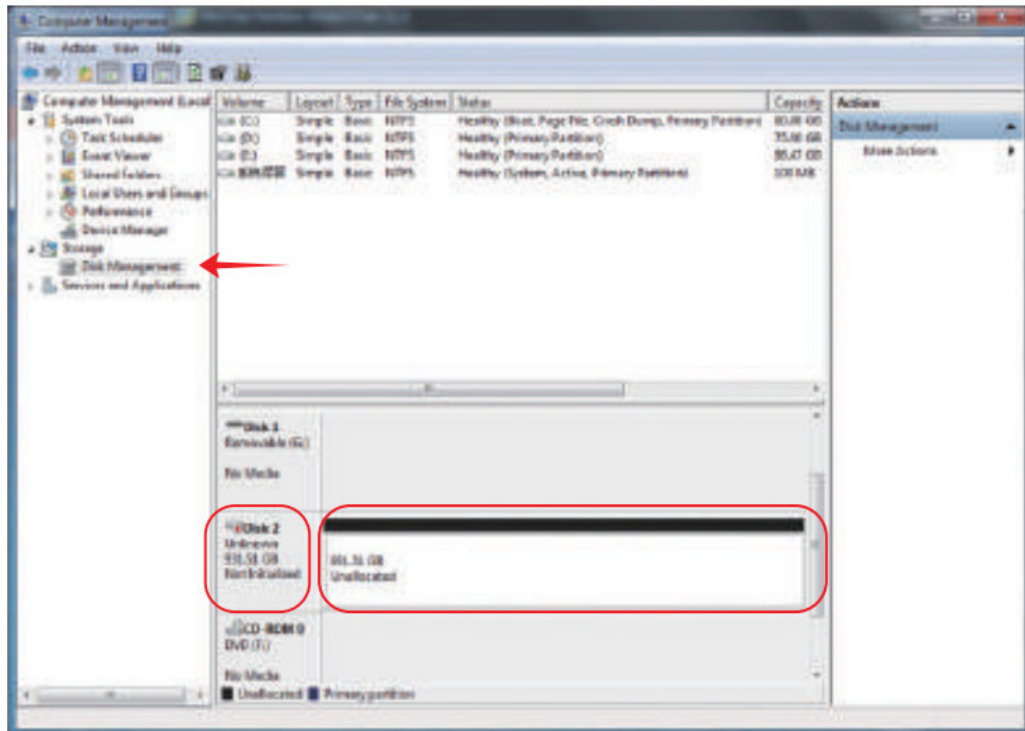


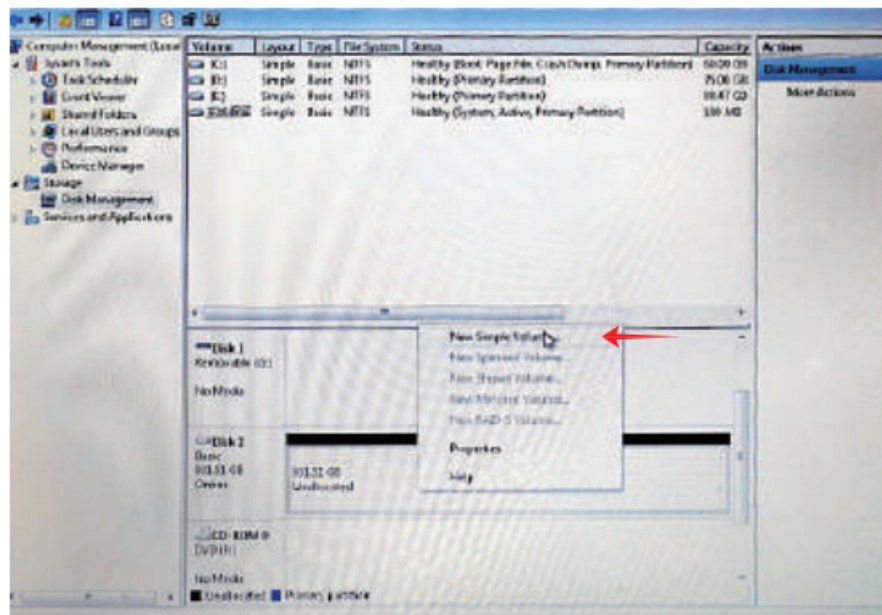
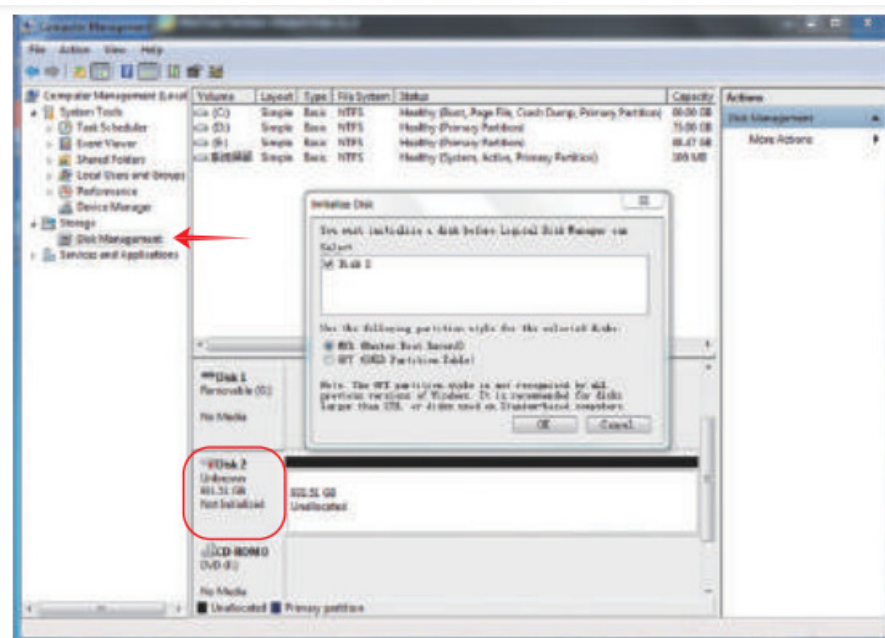
3. If your hard drive is not partitioned or formatted and the operating system correctly recognizes the mobile hard drive, you can use the partitioning program and the system formatter to manage the hard drive. You can also use third-party software (such as Fdisk, DM, PQMagic, etc) to partition and format the hard drive



## The following are the partitioning and formatting steps of the Win7 system:

1. Right-click on \*Computer" and select \*Manage'. After entering Computer Management, select \*Disk Management". Right-click on the disk name area, select "Initialize Disk" select "New Simple Volume" in the disk area, and then click "Next".

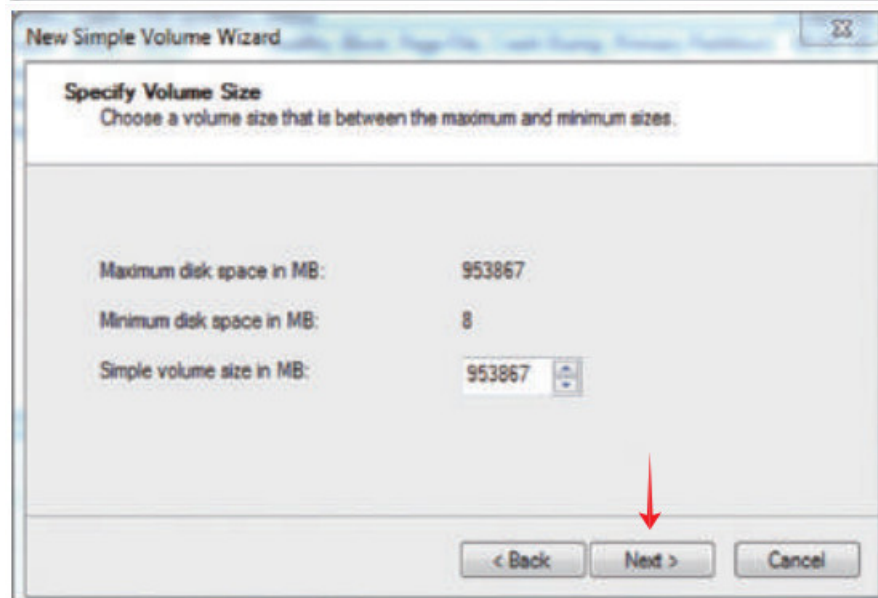
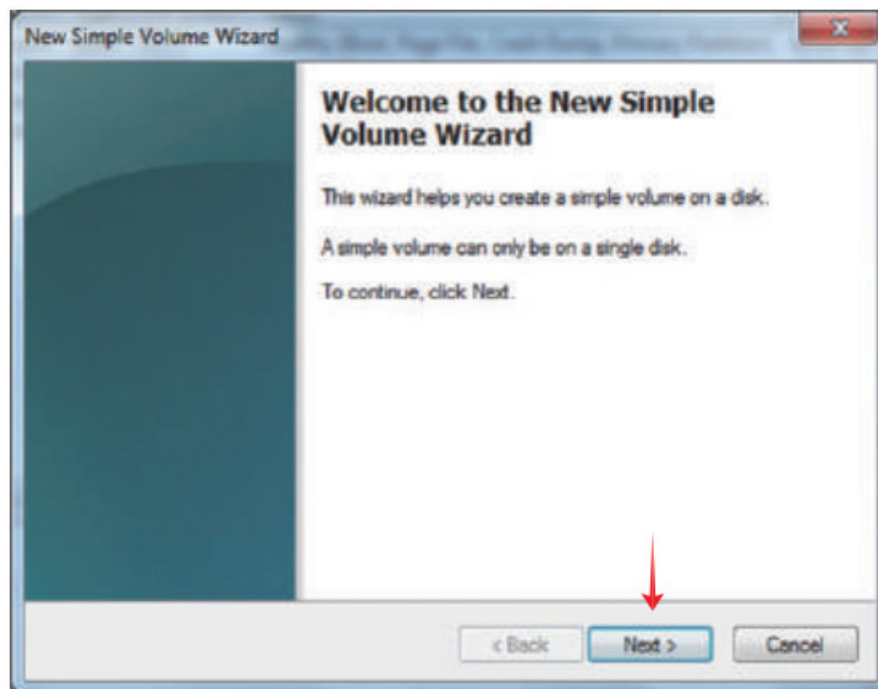




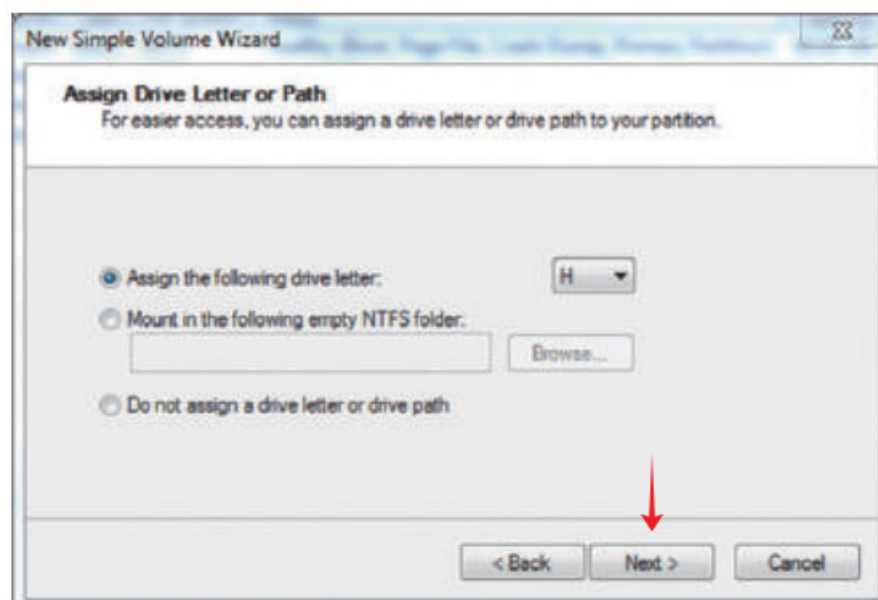
2. At this point, the disk partition size is displayed. You can divide the hard drive into one or more areas as needed. There are currently two formats for disk partitioning: MBR and GPT. The MBR supports up to 2 TB and 4 partitions. GPT supports up to 256 TB and 7 primary partitions.

The size of the simple volume corresponds to the current partition capacity (1 GB = 1024 MB).

If you only need one partition, simply set the value to the maximum. (The default is the maximum.) Then click Next.



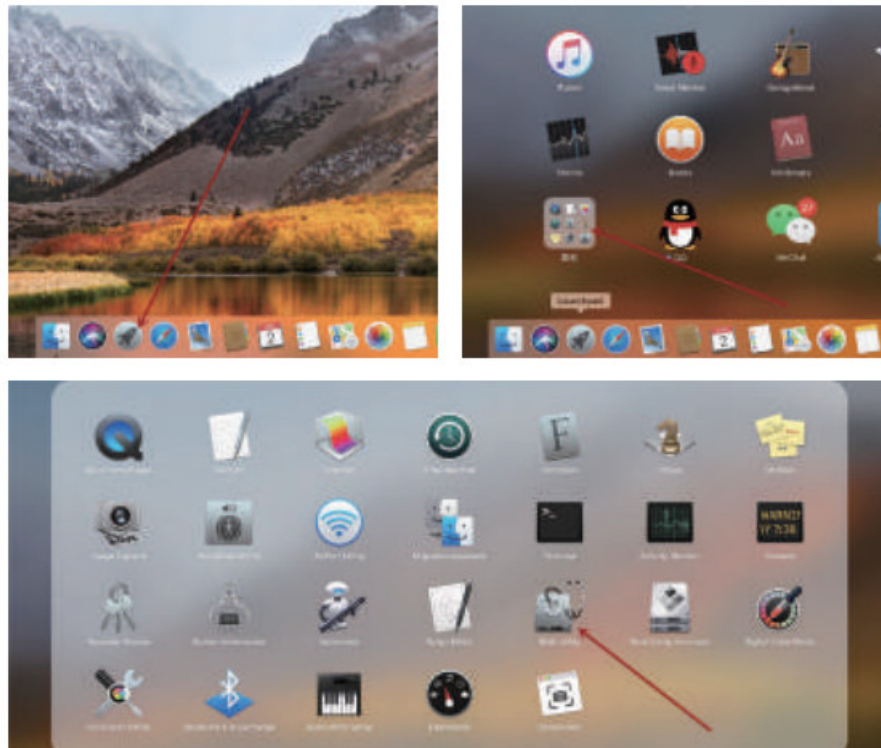
No further changes are necessary. Just click "Next" and then "Finish".



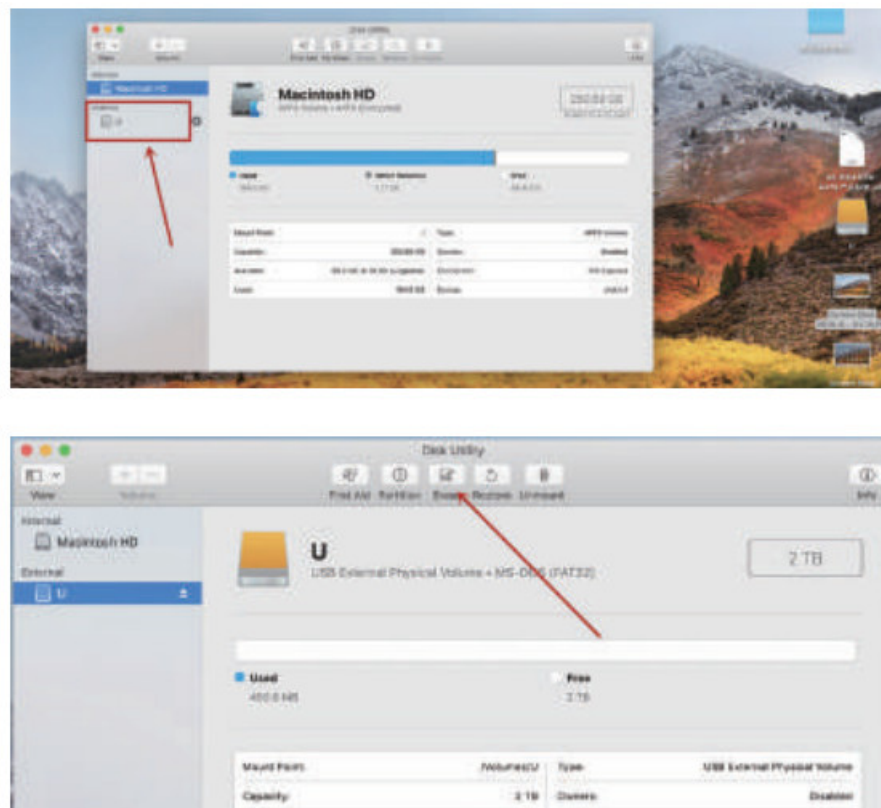
At this point, the hard drive will appear on your computer and you can use it normally. (If you need to split the hard drive into multiple areas, repeat the above steps.)

## The following are the partitioning and formatting steps of the MacOS 10 system:

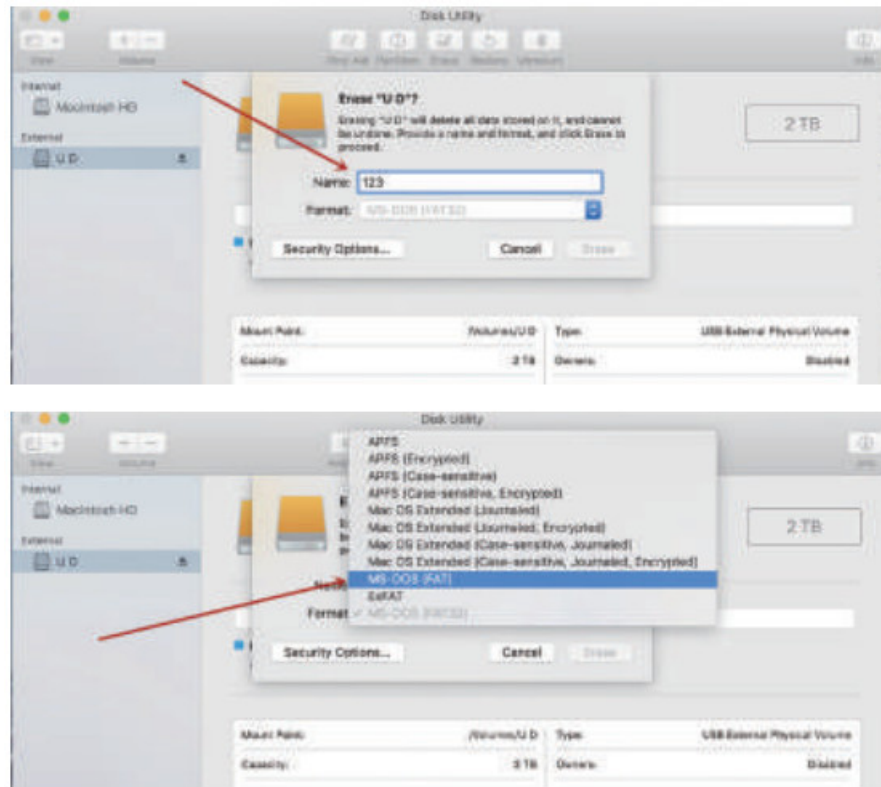
1. Click the Launchpad icon on your dock, click the Other folder, and then click Disk Utility.



2. On the left side of the window, you will see all mounted volumes.

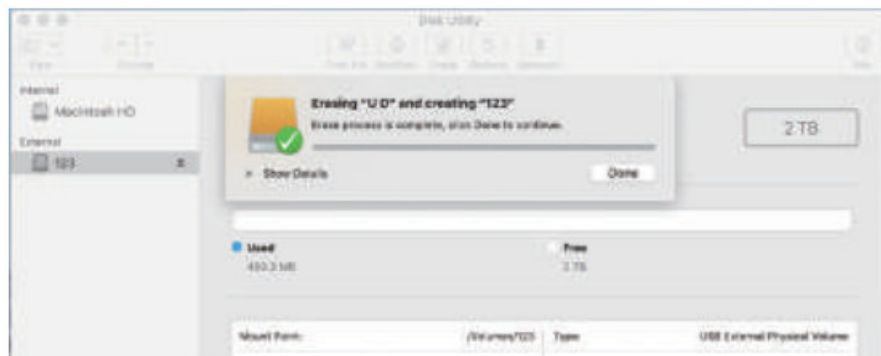


3. Click the drive about to format and click the Erase button or tab, then complete these items:
  - Name: Enter a name that you want the volume to have after you erase it
  - Format: Disk Utility shows the recommended Mac format by default.



It is recommended to use FAT32 if you are using both Windows and Mac operating systems.

4. Click Erase to begin erasing.



## Remove Device

Note: Do not forcibly remove the hard drive enclosure or the hard disk, as this may cause disk errors, data damage or loss.

A: Remove from Microsoft Windows system

Click "Safely Remove Hardware and Eject Media" icon on task bar, select "Eject the USB device" to remove the devices safely when the system suggests "Safe To Remove hardware".

B: Remove from Mac OS system

Stop the reading/writing to the devices and drag it in to trash.

## FAQ

1. The data transfer speed is low.

A. Vergewissern Sie sich, dass die Festplatte und das Datenkabel richtig angeschlossen sind. B. Connect the enclosure to the USB30 port your computer. C. Hard drive do support high speed data transfer rate.

2. Enclosure could not be recognized by the computer.


A Make sure the hard drive and the data cable are connected securely A. Make sure the hard drive and the data cable are connected securely B. Hard drive is workable in other device (PC or enclosure) CTry to connect with anoter USB data cable. D. Hard drive is the right format use GPT format when capacity larger than 2TB £. Format the hard drive or deeply format in Dos accordingly. (Make sure you backup the data frst)

Safety Instructions

- 1. Please do not strike, throw, or acupuncture the product and you need to avoid dropping, squeezing or bending the product
- 2. Please do not use or save this product in a wet environment, and avoid it being soaked or flushed with liquids.
- 3. Please do not use the product in a hot, dusty environment and keep it away from fire.
- 4. Please do not expose this product in sunlight for too long.
- 5. The product can't be put in a corrosive environment. Don't use other chemical solutions to clean the product.
- 6. Please do not put the product and accessories in a powerful electromagnetic field and keep it away from magnetic equipment.
- 7. Chitdren need their parents' supervision to use the product.
- 8. Please do not disassemble/dismantle and repair the product and accessories. You need to give it to an authorized agency to repair this product. Please leave it to an authorized agency to repair this product.
- 9. Please use the power adapter specified by our company.
- 10. When you are using this product, if there is any problem, please feet free to contact the dealer or the network platform service center at any time.

RSHTECH

Documents / Resources

	<a href="#">RSHTECH RSH-319 Hard Drive Enclosure</a> [pdf] Instruction Manual RSH-319 Hard Drive Enclosure, RSH-319, Hard Drive Enclosure, Drive Enclosure, Enclosure
---	--

References

- [User Manual](#)