



RSHTECH DS02 Hard Drive Docking Station USB Instruction Manual

[Home](#) » [RSHTECH](#) » RSHTECH DS02 Hard Drive Docking Station USB Instruction Manual 

RSHTECH DS02 Hard Drive Docking Station USB



Contents

- 1 Product Front Interface
- 2 Product Rear Interface
- 3 Product List
- 4 Technical Data
- 5 Product Description
- 6 Cloning Steps
- 7 Operation Steps
- 8 Partitioning and Formatting
- 9 Partitioning and Formatting Steps of The Win7 System
- 10 Partitioning and Formatting Steps of The Mac OS 10 System
- 11 Remove Device
- 12 FAQ
- 13 Safety Instructions
- 14 Need help?
- 15 Documents / Resources
 - 15.1 References
- 16 Related Posts

Product Front Interface

1. 2.5" /3.5" SATA interface
2. TF card slot
3. SD card slot
4. USB 3.0 HUB interface
5. USB 3.0 HUB interface



Product Rear Interface

1. OTC / OTB button
2. USB A interface (to the computer)
3. Power jack
4. Power switch



① ② ③ ④

Product List

- 1 x Hard drive docking station
- 1 x USB 3.0 data cable
- 1 x 12V power adapter
- 1 x User manual

Please confirm that the package content of your Multi-function Hard Drive Docking Station is complete: If any item is not in the package or damaged, please contact your original purchase dealer for assistance: Due to different production batches, the product packaging, appearance or some accessories may be changed, so that the products you purchase may not be exactly the same as the pictures, appearance and accessories provided in this manual.

Please refer to the list of the products marked in the physical product that you have received and the actual product, We appreciate your understanding.

Technical Data

Product Name	USB3.0 Multifunction Hard Drive Docking station
Color	Black
Supported drives	2.5" /3.5" hard drives(Upto 16TB)
Interface	USB 3.0 to SATA 111
Data Connector Type	USB 3.0 (Backward compatible with usb 2.0)
Hard Drive Format	GPT format: Supported
	MBR format; Supported when capacity<2TB
Support	Drive free plug and play, hot swap
Support	OTB
Certification	CE, FCC, RoHS
Material	Aluminum alloy + ABS
Operation & Storage environment	Operation: 5 to 55 °C Storage: -20 to 60 °C
Supported operating systems	Windows 2000/XP/Vista/7/8/10; Mac OS 10/ Linux or above

Product Description

Two SATA hard drive can be used at the same time, It support the SATA hard drive up to 12TB; The super heat dissipation design allows it can be used for a long time. Built-in USB2.0 card reader can read SD/TF (single drive letter display) up to 128G; 2 USB3.0 interfaces expansion can be connected to mouse, keyboard, USB drive, camera, printer, mobile hard drive and other standard USB drives equipment, The docking station supports one-click backup function.

Cloning Steps

Insert source disk in the A slot and target disk in the B slot.

USB data cable does not require being connected to the computer when cloning, offline cloning will automatically write the contents of the source disk (A disk) to the target disk (B disk). Note: If you have data on the target disk, please backup the target disk data before cloning, offline cloning will overwrite the target disk completely.

1. Insert the hard disk, the A slot hard disk is the source disk (the original data stored disk) The B slot hard disk is the target disk (the hard disk to be cloned)
2. Plugin the power supply, turn on the power switch, and the power indicator is red (it is recommended to operate after 3-5 seconds)
3. Press and hold the OTC/OTB button for 3-5 seconds. After all 4 progress indicators are flashing, release the button, and press the OTC/OTB button again within 3 seconds to enter the cloning progress.
4. Cloning progress: At the beginning, the 25% indicator is flashing, it turns to steady light after 25% of the data is completed, then the 50% indicator starts flashing until all the progress indicators are on, the clone is completed.
5. After cloning completed, if the target disk does not display when connected to the computer, please find it in Disk Management of your computer and change it to online status.

Operation Steps

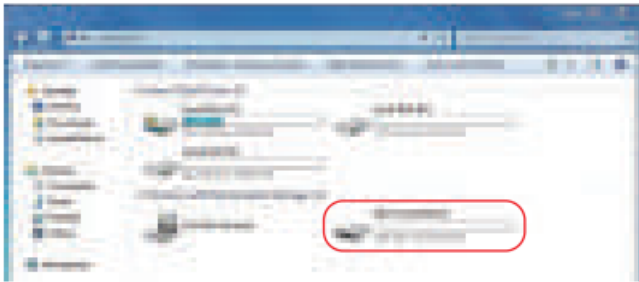
1. Connect the power adapter to the DC-12V interface of the hard drive docking station.
2. Insert the USB cable of the product into the hard drive docking station and connect to the computer.
3. Insert the hard driver vertically into the groove of the hard drive docking station and keep the hard drive level stable.
4. Turn on the power switch . The power indicator will remain on for a long time . It can be used when the hard drive displays a drive letter on the computer. The work indicator will flash when reading or writing.
5. The memory card and USB standard device can be used in the power-on state, and the indicator light will flash when reading and Writing .
6. Windows XP system does not recognize more than 2T B hard drive (The XP system uses the NBR format when it recognizes a hard disk within 2TB). If your hard drive is larger than 2T8, please upgrade your system to Win7 and above. When you need to log out of the mobile device, please stop the data read and write of the mobile device first (forcibly exiting may cause your data to be abnormal or lost). It is recommended that you turn off the power switch before you remove or insert the hard drive and then gently pull the hard drive straight up.

Partitioning and Formatting

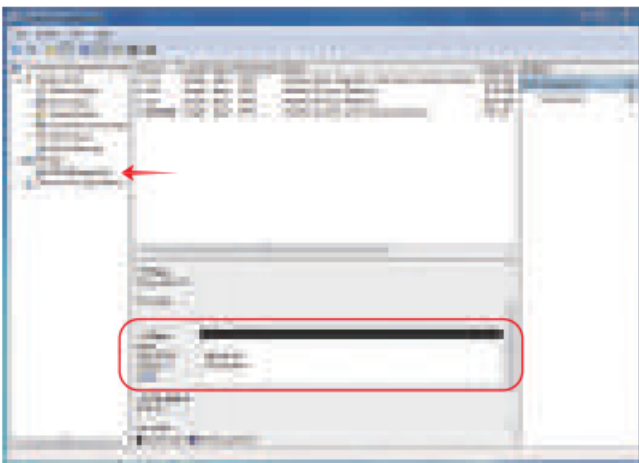
Note: If your hard drive is a newly purchased or is part of the monitor and server hard drive, the computer may not be able to directly identify it. You must partition and format the hard drive before using it.

1. If your hard drive has been partitioned and formatted. You can connect the device directly and start using it. A

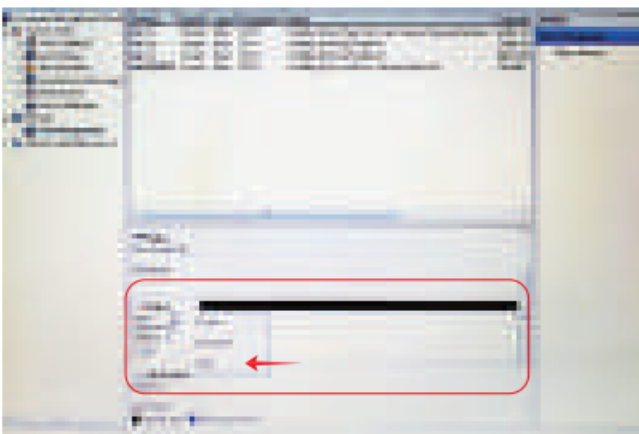
new volume will appear on your computer {see figure below):



2. If your hard drive is partitioned and formatted but no new hard drive appears on the computer after connecting, check that the hard drive is installed and turned on. Then right-click on the 'computer' and select 'Manage'. After entering Computer Management, select "Disk Management" to see if a new disk or a non-partitioned disk is presented. If the hard drive is offline, right-click and select online. If the hard drive is not assigned, select 'change drive and path', then select "Add" and click "OK" as shown below:

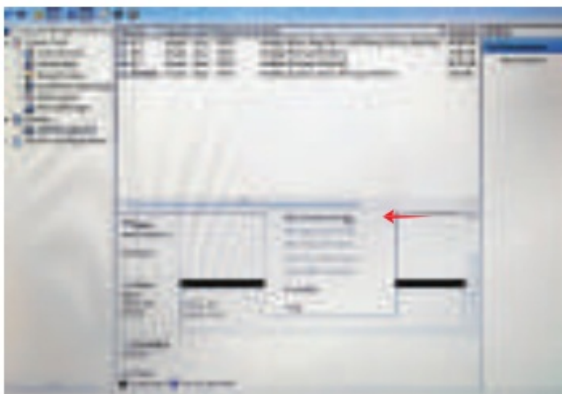
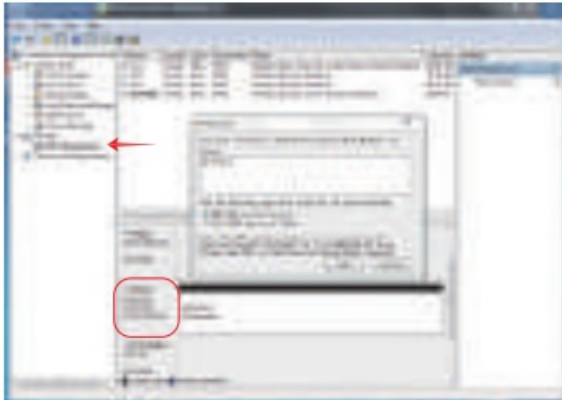
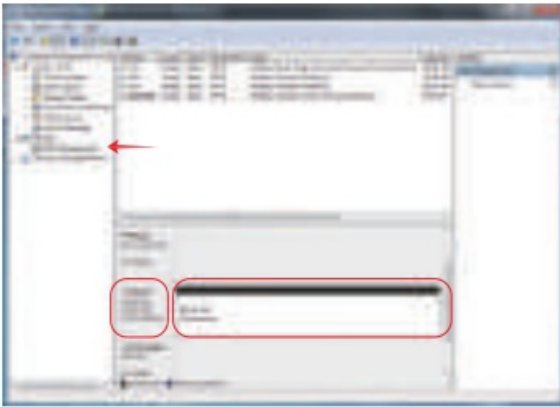


3. If your hard drive is not partitioned or formatted and the operating system correctly recognizes the mobile hard drive, you can use the partitioning program and the system formatter to manage the hard drive. You can also use third-party software (such as F disk, DM, PQ Magic, etc.) to partition and format the hard drive.

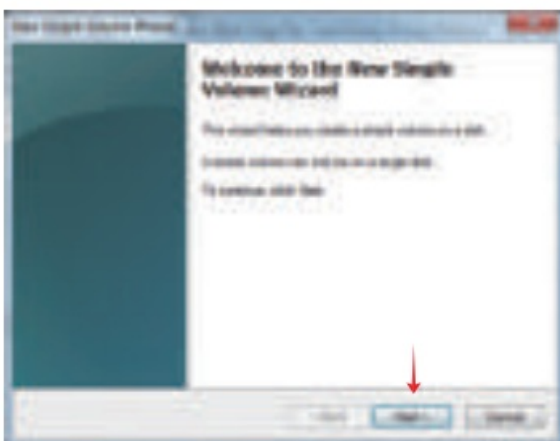


Partitioning and Formatting Steps of The Win7 System

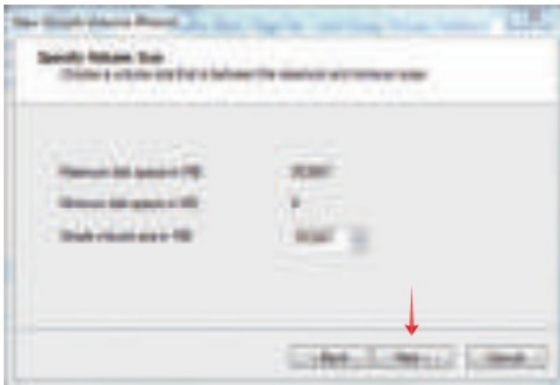
1. Right-click on "Computer" and select "Manage". After entering Computer Management, select "Disk Management".
Right-click on the disk name area, select "Initialize Disk", select "New Simple Volume" in the disk area, and then click "Next".



2. At this point, the disk partition size is displayed. You can divide the hard drive into one or more areas as needed. There are currently two formats for disk partitioning: MBR and GPT. The MBR supports up to 2 TB and 4 partitions. GPT supports up to 256 TB 7 primary partitions.



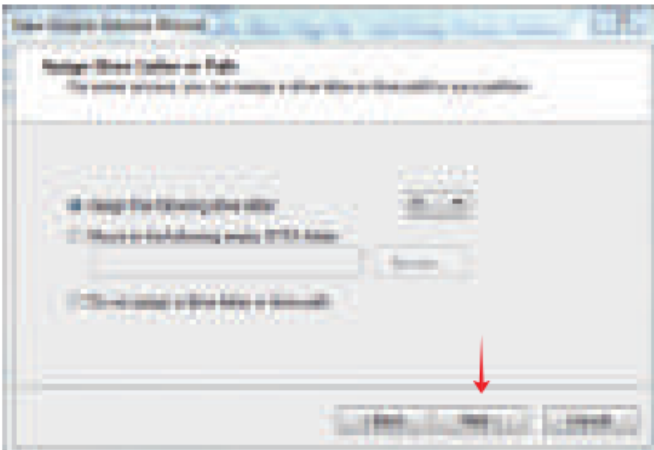
The size of the simple volume corresponds to the current partition capacity (1 GB = 1024 MB). If you only need one partition, simply set the value to the maximum. (The default is the maximum.) Then click Next.



No further changes are necessary. Just click “Next” and then “Finish”.

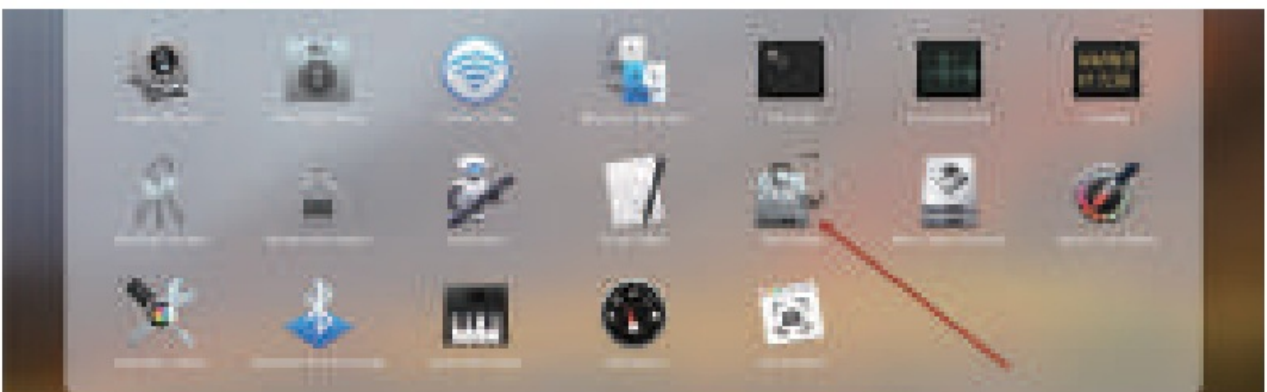
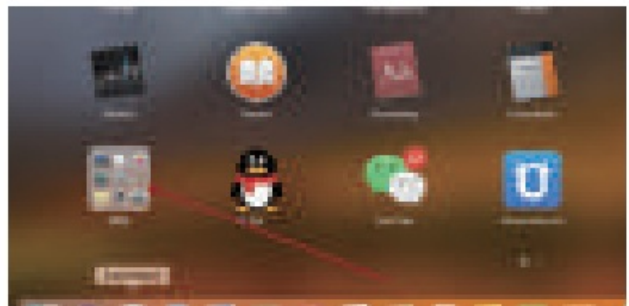
At this point, the hard drive will appear on your computer and you can use it normally.

(If you need to split the hard drive into multiple areas, repeat the above steps.)

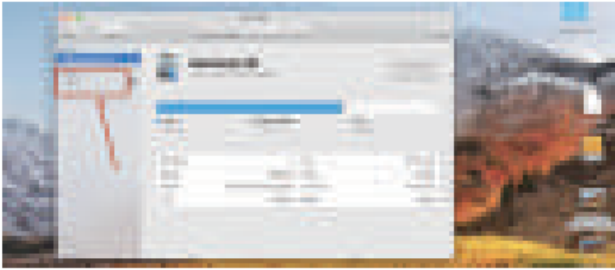


Partitioning and Formatting Steps of The Mac OS 10 System

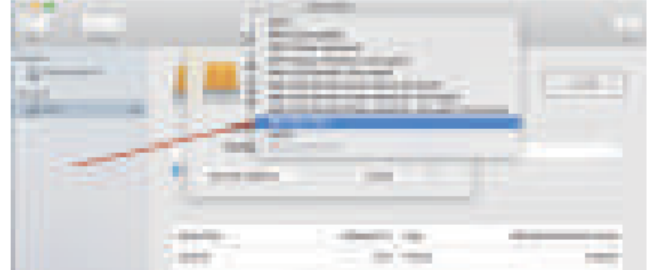
1. Click the Launchpad icon on your dock, click the Other folder, and then click Disk Utility.



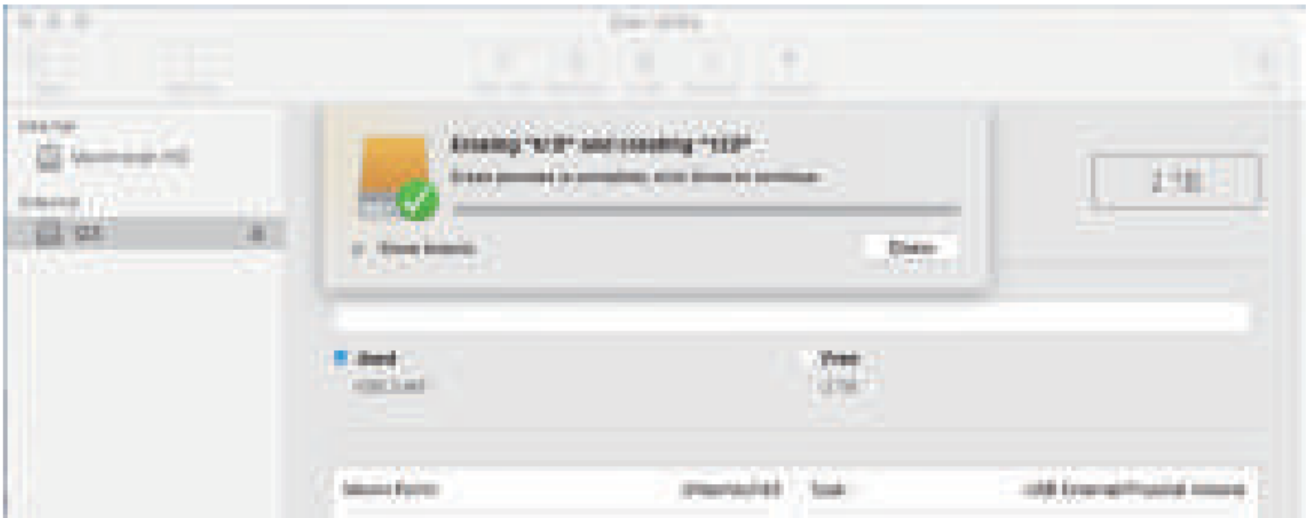
2. On the left side of the window, you will see all mounted volumes .



3. Click the drive about to format and click the Erase button or tab, then complete these items:



- Name: Enter a name that you want the volume to have after you erase it.
- Format Disk Utility shows the recommended Mac format by default.



It is recommended to use FAT32 if you are using both Windows and Mac operating systems.

4. Click Erase to begin erasing.

Remove Device

Note: Do not forcibly remove the hard drive enclosure or the hard disk, as this may cause disk errors, data damage or loss.

A: Remove from Microsoft Windows system

Click "Safely Remove Hardware and Eject Media" icon on task bar, select "Eject the USB device" to remove the devices safely when the system suggests "Safe To Remove hardware".

B: Remove from Mac OS system

Stop the reading/writing to the devices and drag it in to trash.

FAQ

1. The data transfer speed is low.

- A. Make sure the hard drive and data cable are connected correctly.
- B. Connect the enclosure to the USB3.0 port your computer.
- C. Hard drive do support high speed data transfer rates.
2. Enclosure could not be recognized by the computer.
 - A. Make sure the hard drive and the data cable are connected securely
 - B. Hard drive is workable in other device (PC or HDD enclosure)
 - C. Try to connect with another USB data cable.
 - D. Hard drive is the right format use GPT format when capacity larger than 2TB
 - E. Format the hard drive or deeply format in Dos accordingly.(Make su re you backup the data first)
3. Cannot clone offline
 - A. Ensure that the capacity of Disk A (original disk) is less than or equal to the capacity of Disk B (target disk).
 - B. Make sure there are no bad sectors on the hard disk.
 - C. Disconnect the USB data cable connected to the computer.

Safety Instructions

1. Please do not strike, throw, or acupuncture the product and you need to avoid dropping, squeezing or bending the product
2. Please do not use or save this product in a wet environment, and avoid it being soaked or flushed with liquids.
3. Please do not use the product in a hot, dusty environment and keep it away from fire.
4. Please do not expose this product in sunlight for too long.
5. The product can't be put in a corrosive environment. Don't use other chemical solutions to clean the product.
6. Please do not put the product and accessories in a powerful electromagnetic field and keep it away from magnetic equipment.
7. Children need their parents' supervision to use the product.
8. Please do not disassemble/dismantle and repair the product and accessories. You need to give it to an authorized agency to repair t his product. Please leave it to an authorized agency to repair this product.
9. Please use the power adapter specified by our company.
10. When you are using this product, if there is any problem, please feel free to contact the dealer or the network platform service center at any time.

Need help?



www.rshtech.com




support@rshtech.com



support-eu@rshtech.com (EU Market)



Documents / Resources

	RSHTECH DS02 Hard Drive Docking Station USB [pdf] Instruction Manual B1TZymlQ-VL, DS02, DS02 Hard Drive Docking Station USB, DS02, Hard Drive Docking Station USB, Drive Docking Station USB, Docking Station USB, Station USB, USB
---	--

References

- [User Manual](#)