



# ROYAL KLUDGE RK ROUND Mechanical Wireless Keyboard User Manual

[Home](#) » [ROYAL KLUDGE](#) » ROYAL KLUDGE RK ROUND Mechanical Wireless Keyboard User Manual 

## Contents

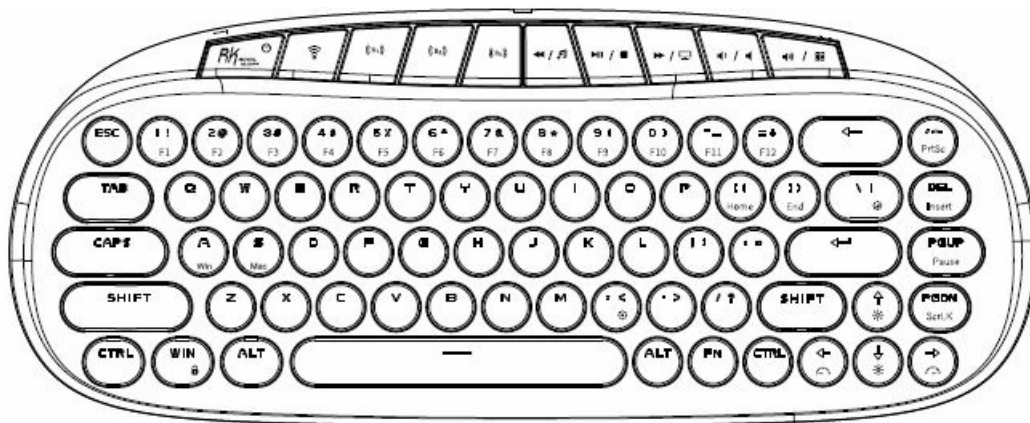
- [1 ROYAL KLUDGE RK ROUND Mechanical Wireless Keyboard](#)
- [2 PRODUCT BASIC](#)
- [3 WIRED MODE & CHARGING](#)
- [4 BATTERY LEVEL PROMPT](#)
- [5 HOW TO USE](#)
  - [5.1 BT Connection](#)
- [6 BACKLIGHT CONTROL](#)
- [7 SPECIAL FUNCTION KEYS](#)
- [8 FUNCTION KEY](#)
- [9 SYSTEM REQUIREMENTS](#)
- [10 FCC COMPLIANCE STATEMENT](#)
- [11 Documents / Resources](#)
- [12 Related Posts](#)



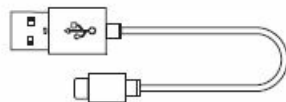
**ROYAL KLUDGE RK ROUND Mechanical Wireless Keyboard**



## PRODUCT BASIC



Keyboard

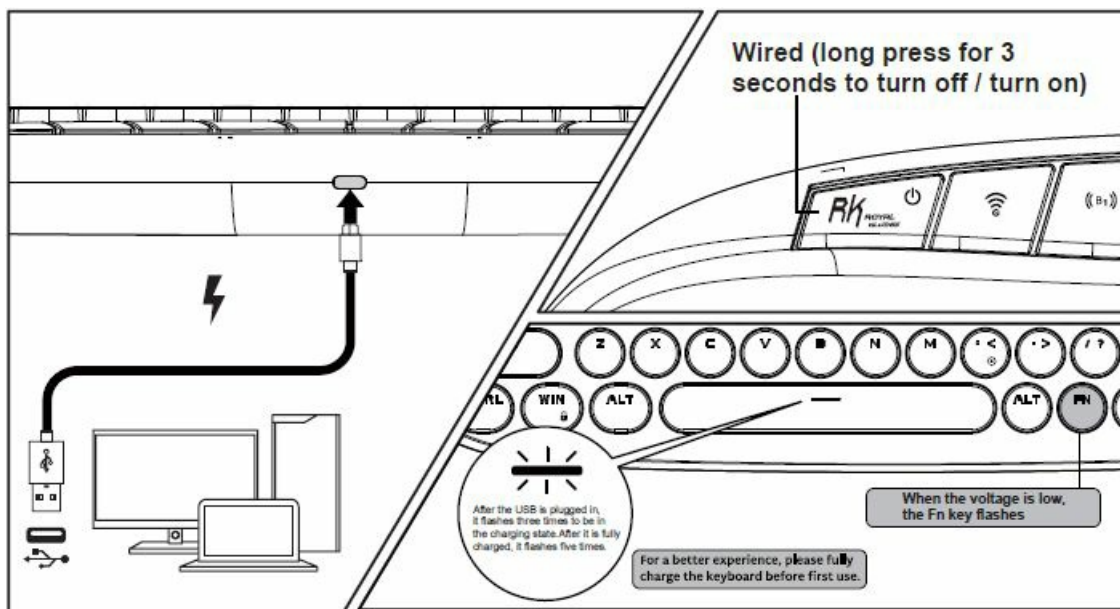


Type-C Cable

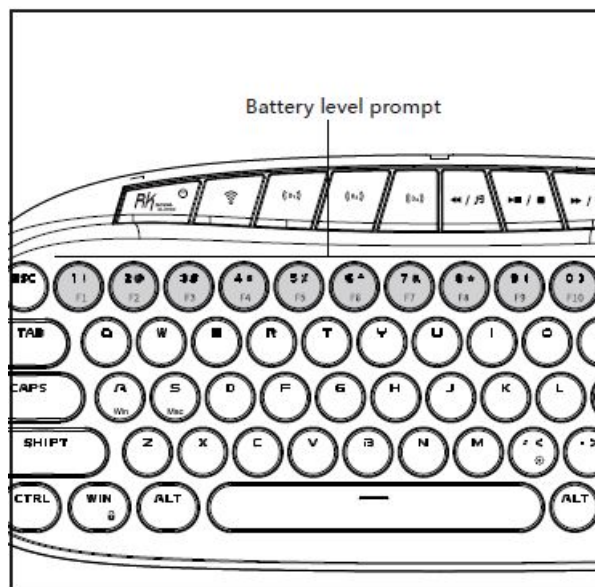


User Manual

## WIRED MODE & CHARGING



## BATTERY LEVEL PROMPT



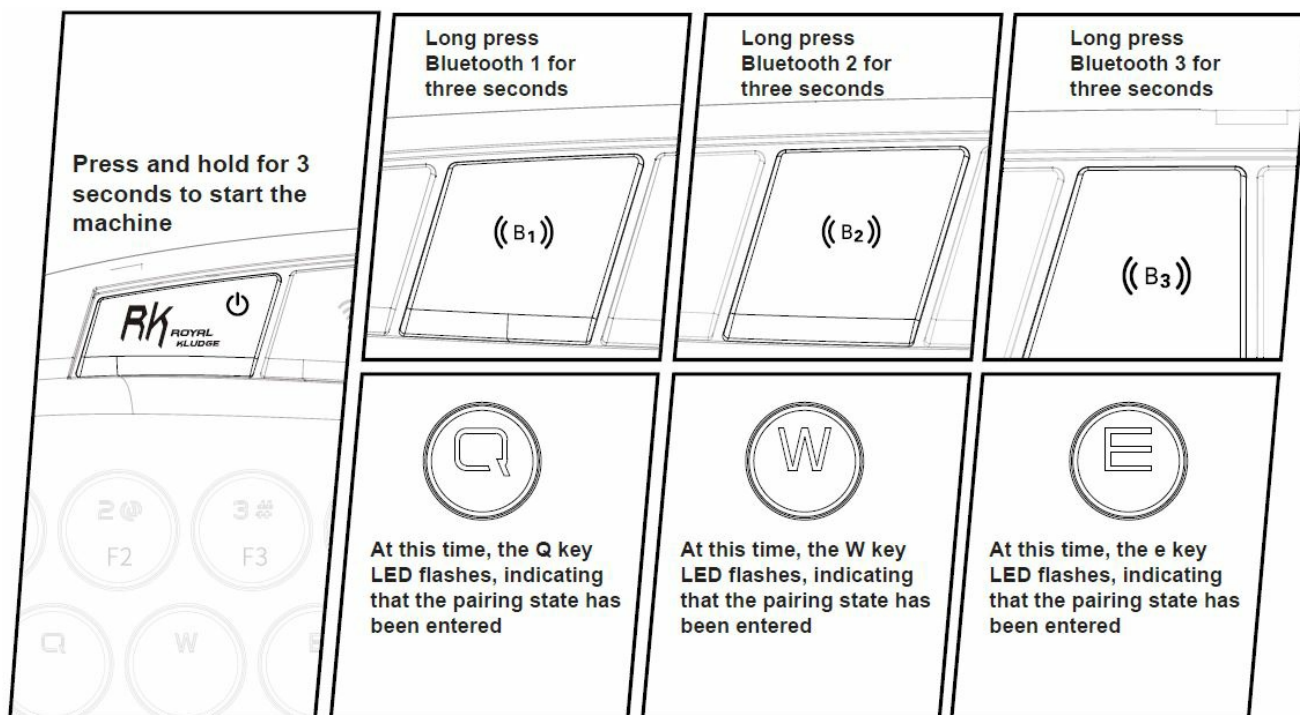
Press fn+enter to view the battery level

Such as:

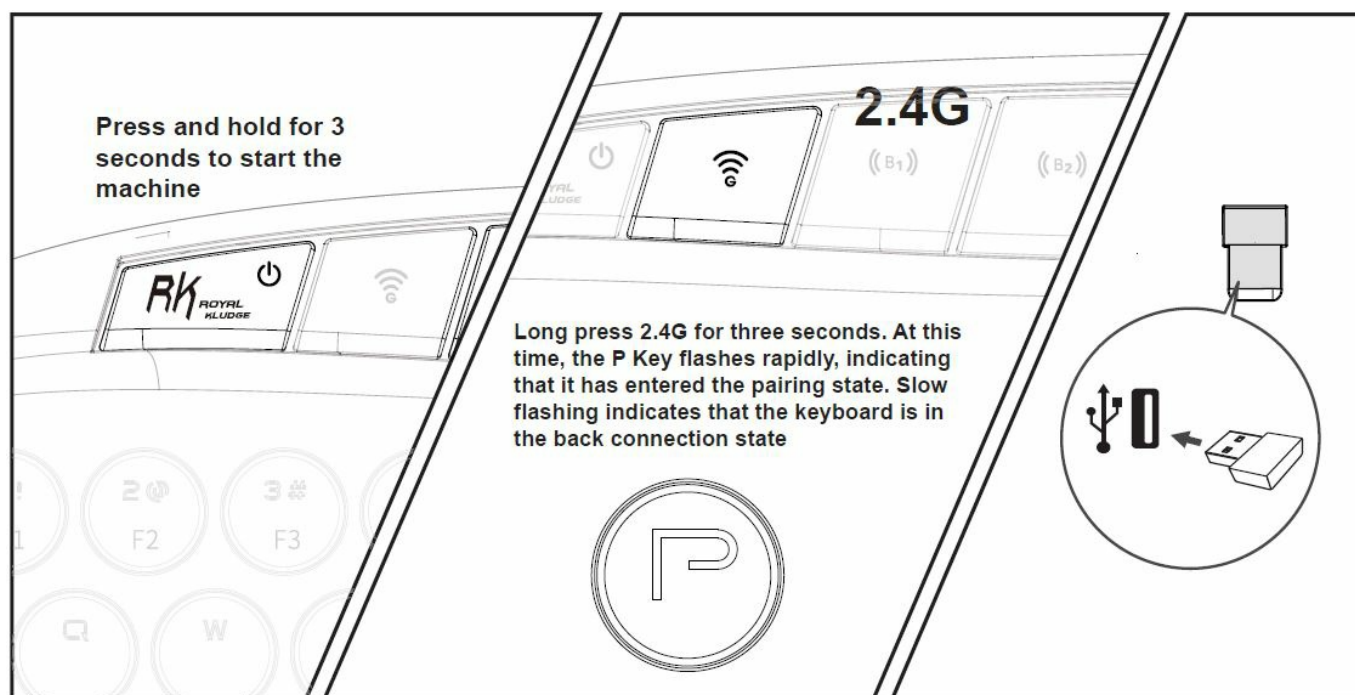
- The back light indicates that the keyboard is 10% charged at this time
- ~ The backlight is on at the same time, indicating that the keyboard is 20% charged at this time, and so on
- ~ The backlight is on at the same time, indicating that the keyboard power is 100%

## HOW TO USE

### BT Connection

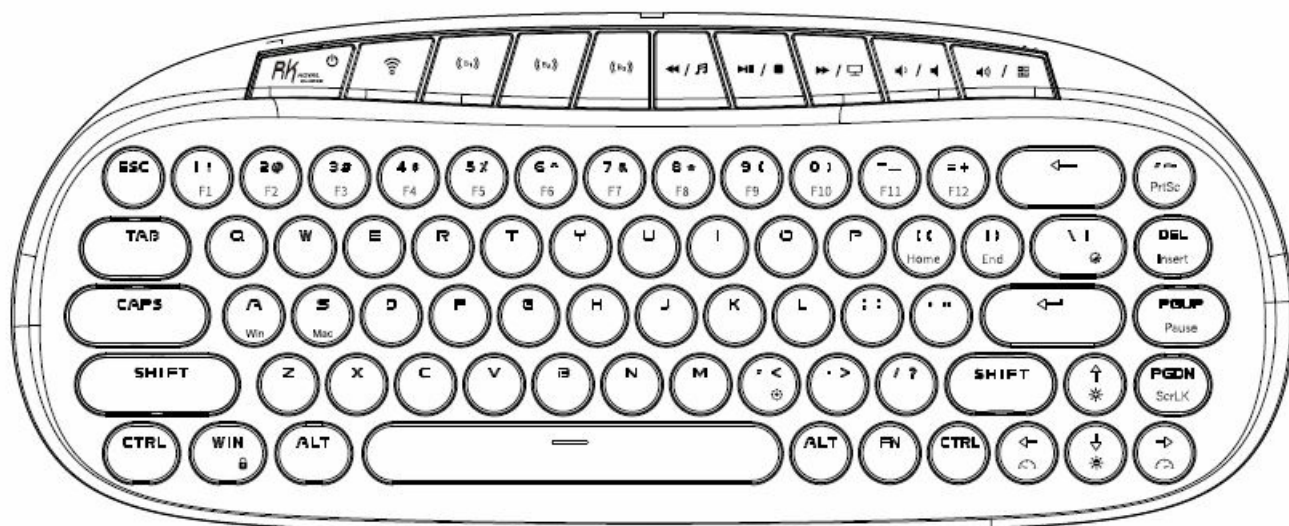


## 2.4Ghz



## BACKLIGHT CONTROL





		Switch Backlight Mode			(The same applies to RGB) Monochromatic conditioning cycle
		Backlight Brightness +			Backlight Speed -
		Backlight Brightness -			Backlight Speed +

## SPECIAL FUNCTION KEYS

	PrtSc		Home
	Insert		End
	Pause		ScrLk
	Windows Lock		Restore to factory settings
	switch to windows system		switch to mac system

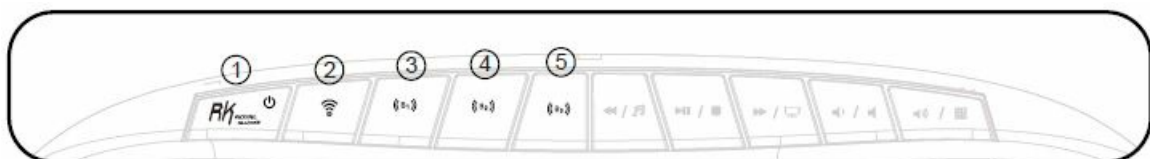
$F_n$	+	1	<b>F1</b>
$F_n$	+	2	<b>F2</b>
$F_n$	+	3	<b>F3</b>
$F_n$	+	4	<b>F4</b>
$F_n$	+	5	<b>F5</b>
$F_n$	+	6	<b>F6</b>

$F_n$	+	7	<b>F7</b>
$F_n$	+	8	<b>F8</b>
$F_n$	+	9	<b>F9</b>
$F_n$	+	0	<b>F10</b>
$F_n$	+	$\text{--}$	<b>F11</b>
$F_n$	+	$\text{=+}$	<b>F12</b>

## FUNCTION KEY

### First five functions (the first group of functions):

1. Wired (long press for 3 seconds to turn off/ turn on)
2. 2.4G
3. Bluetooth 1
4. Bluetooth 2
5. Bluetooth 3



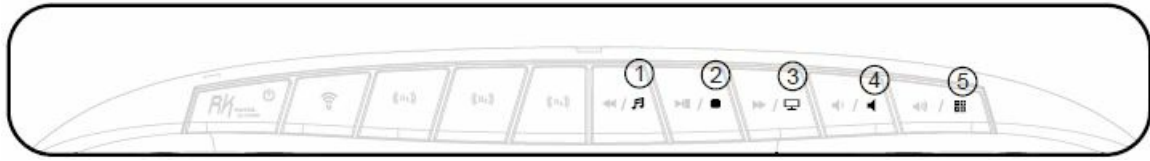
### First combination function key (the first group of functions):

1. Last song
2. Play/ pause
3. Next song
4. Volume-
5. Volume+



### Second function key combination (FN+the first group of functions):

1. Player
2. Stop
3. Computer
4. Mute
5. Calculator



## SYSTEM REQUIREMENTS

### BT Mode

- Device With Bluetooth 5.1 or later
- **PC:** Windows 7 or Later
- **Mac:** macOS X 10.6 Snow Leopard or Later
- **ios:** All iPads/iPhone 5 or Later
- **Android:** 5.0 Lollipop or Later

### Wired/2.4Ghz Mode

- Computer With Available USB port
- **PC:** Windows 7 or Later
- **Mac:** macOS X 10.6 Snow Leopard or Later

## FCC COMPLIANCE STATEMENT

This device complies with part 15 of the FCC Rules.

Operation is subject to the following two conditions:

1. This device may not cause harmful interference, and
2. This device must accept any interference received, including interference that may cause undesired operation.

### Note:

This equipment has been tested and found to comply with the limits for a Class B digital device, pursuant to Part 15 of the FCC Rules. These limits are designed to provide reasonable protection against harmful interference in a residential installation. This equipment generates, uses, and can radiate radio frequency energy and, if not installed and used in accordance with the instructions, may cause harmful interference to radio communications.

However, there is no guarantee that interference will not occur in a particular installation. If this equipment does cause harmful interference to radio or television reception, which can be determined by turning the equipment off and on, the user is encouraged to try to correct the interference by one or more of the following measures:

- Reorient or relocate the receiving antenna.
- Increase the separation between the equipment and the receiver.

- Connect the equipment to an outlet on a circuit different from that to which the receiver is connected.
- Consult the dealer or an experienced radio/TV technician for help.

**Warning:**

Changes or modifications to this unit not expressly approved by the part responsible for compliance could void the user’s authority to operate the equipment.

**FCC Radiation Exposure Statement**

- The device has been evaluated to meet the general RF exposure requirement.
- The device can be used in portable exposure conditions without restriction.

**Have an issue with one of our RK products?**

- Feel free to contact us with any product issues or questions.
- We will reply as quickly as possible to ensure all your needs are handled. Please contact the seller.

**WARNING:**

This product can expose you to chemicals including {name of one or more chemicals}, which (are) known to the State of California to cause cancer and birth defects or other reproductive harm. For more information go to [www.P65warnings.ca.gov](http://www.P65warnings.ca.gov).

**Executive standard:** GB/T 14081-2010.

**Documents / Resources**

	<p><a href="#">ROYAL KLUDGE RK ROUND Mechanical Wireless Keyboard</a> [pdf] User Manual            RKROUND, 2A4MQ-RKROUND, 2A4MQRKROUND, 166-83801-01, RK ROUND, Mechanical Wireless Keyboard, RK ROUND Mechanical Wireless Keyboard, Wireless Keyboard, Keyboard</p>
--	---