



Rowley Roller Shade Using Skyline Easy Link System and Clutch Instructions

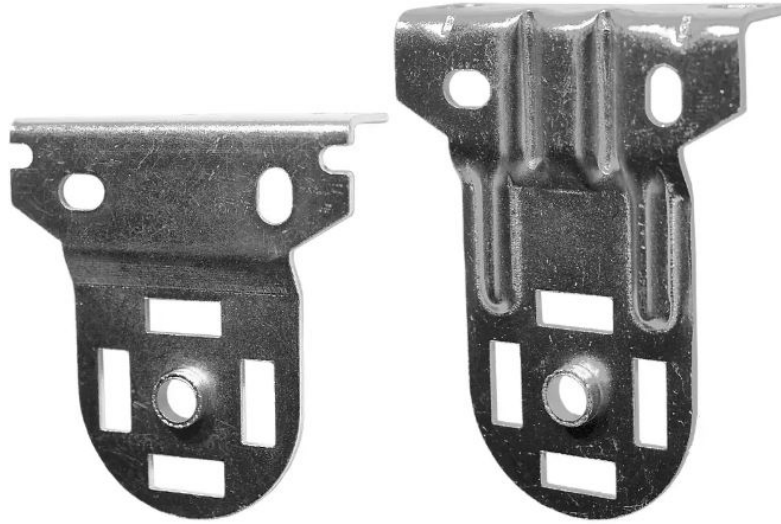
[Home](#) » [Rowley](#) » Rowley Roller Shade Using Skyline Easy Link System and Clutch Instructions 

Contents

- [1 Rowley Roller Shade Using Skyline Easy Link System and Clutch](#)
- [2 Product Information](#)
- [3 Product Usage Instructions](#)
- [4 INTRODUCTION](#)
- [5 PARTS LIST](#)
- [6 CALCULATIONS](#)
- [7 MEASUREMENT](#)
- [8 INSTALLATION](#)
- [9 Documents / Resources](#)
 - [9.1 References](#)
- [10 Related Posts](#)



Rowley Roller Shade Using Skyline Easy Link System and Clutch



Product Information

Product Name:

I-1BBMANSKYEL Roller Shade

Introduction:

The I-1BBMANSKYEL Roller Shade is a window treatment system that utilizes the Skyline Easy Link System and Clutch Drive technology. This system allows for one clutch to drive multiple roller shades or one wide Roman shade. The total allowable weight will depend on the clutch selected. Please refer to the relevant clutch instructions for more information.

Parts List:

- Male Drive
- Bracket
- Female Drive
- Bearing
- 2 Tube Adapter (if required)

Calculations:

To determine the tube section cut length, please follow the steps below:

1. Refer to the relevant instructions for clutches and find the “Deduction-from-overall-width”.
2. Calculate the total deduction by adding the “Deduction-from-overall-width” value and $\frac{3}{4}$.
3. Divide the total deduction by 2 to get the deduction from each tube section.

Brackets & Bracket Covers:

The Roller Shade system requires brackets and bracket covers for proper installation. The brackets have different dimensions depending on the desired tube clearance projection width. Bracket covers are available in White,

Satin Nickel, and Black colors. Please note that narrow brackets do not work with covers.

Measurement:

Before installation, accurate measurements need to be taken for both inside mount and outside mount options. Follow the steps below:

1. **Inside Mount:** Measure the width inside the casing (jam-to-jam or casing-to-casing) where the brackets will be installed. Also, measure the length from the top of the bracket to the bottom of the window. Mark your locations accordingly.
2. **Outside Mount:** Measure the width outside between the outer edges of the window trim where the brackets will be installed. Also, measure the length from the top of the bracket to the bottom of the window. Mark your locations accordingly.
3. **Note:** It is important to measure all windows individually for accuracy, even if they appear to be the same size.

Product Usage Instructions

Installation:

1. Mount the brackets to the window casing according to the marked locations. Refer to Figure 2 for proper bracket placement options. The left and right Skyline brackets are identical, allowing the motor to be mounted on either side.
2. Mark and mount the Easy Link bracket between the two end brackets, taking into consideration the minimum and maximum allowable shade size and roller tube length. Measure the location of the Easy Link bracket using the centerline of the bracket arm, not the mounting holes.

Additional Information:

For more detailed information and specific instructions on using the Skyline Easy Link System and Clutch Drive technology, please refer to the complete user manual available at www.RowleyCompany.com.

INTRODUCTION

- The Skyline Easy Link System is used with clutch drive shade systems to allow one clutch to drive multiple roller shades or one wide Roman shade.
- The total allowable weight will depend on the clutch selected. Please refer to the relevant clutch instructions. Figure 1A below shows an assembled Manual Clutch system using a Skyline Easy Link System.

PARTS LIST

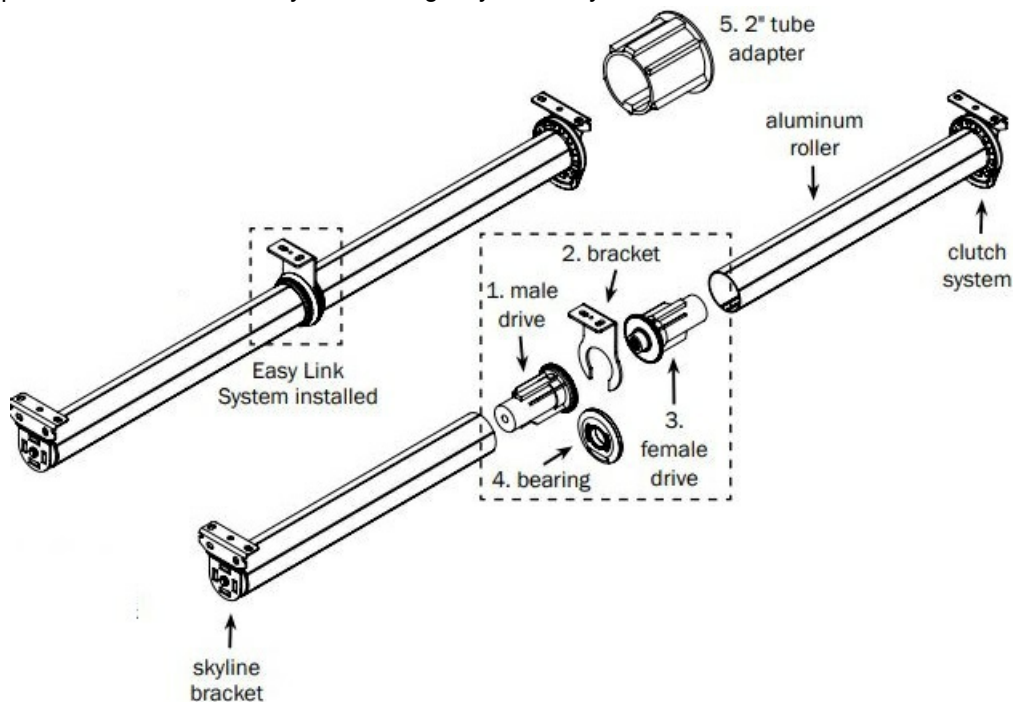
See Figure 1.

1. Male Drive
2. Bracket
3. Female Drive
4. Bearing

5. 2" Tube Adapter (if required)

Figure 1A. Assembled Manual Clutch System Using Skyline EasyLink

Figure 1B. Exploded Manual Clutch System Using Skyline EasyLink



CALCULATIONS

- **Step 1.** Refer to the relevant instructions for clutches and find Deduction-from-overall-width.
- **Step 2.** Add Easy-Link Deduction of $\frac{3}{4}$ " to Deduction-From-Overall-Width to get total deduction.
- **Step 3.** Calculate each tube section cut length.

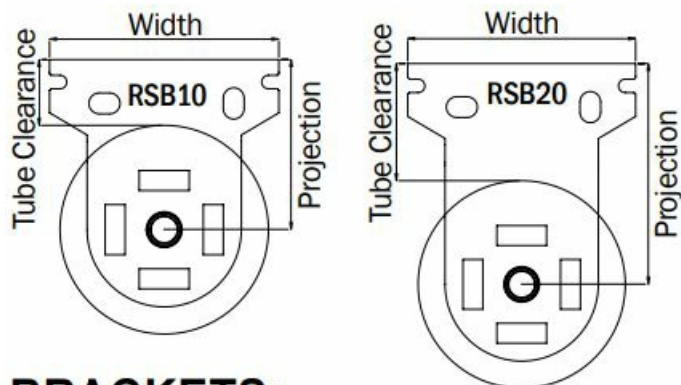
EXAMPLE #1

- Designed Roman shade width is $93 \frac{1}{2}$ ", using the Skyline Clutch RSC30112 with $1 \frac{1}{2}$ " Roller. The Roman shade will be mounted on two tube sections with an Easy Link at the center.
- Deduction-from-overall-width is $1 \frac{3}{8}$ "
- One Easy Link deduction is $\frac{3}{4}$ "
- The total deduction is $1 \frac{3}{8}" + \frac{3}{4}" = 2 \frac{1}{8}"$, or there needs to be $1 \frac{1}{16}"$ deduction from each tube section.
- Each tube section is $93 \frac{1}{2}" - 2 \frac{1}{8}"$ divided by 2, or $45 \frac{11}{16}"$.

EXAMPLE #2

- Designed to have two Roller shades to cover a $110 \frac{5}{8}"$ wide space, using the Skyline Clutch RSG200HD112 with $1 \frac{1}{2}"$ Roller. Easy Link needs to be placed at $46 \frac{1}{2}"$ from left end.
- Deduction-from-overall-width is $1 \frac{7}{16}"$
- One Easy Link deduction is $\frac{3}{4}"$
- The total deduction is $1 \frac{7}{16}" + \frac{3}{4}" = 2 \frac{3}{16}"$, or there needs to be $1 \frac{1}{8}"$ deduction from each tube section.
- The left tube section is $46 \frac{1}{2}" - 1 \frac{1}{8}"$, or $45 \frac{3}{8}"$
- The right tube section is $110 \frac{5}{8}" - 46 \frac{1}{2}" - 1 \frac{1}{8}"$, or $63"$

BRACKETS & BRACKET COVERS:



BRACKET COVERS:

Item #	Fits
RSBC10/	RSB10
RSBC20/	RSB20

Available in White /W, Satin Nickel /SN and Black /K. Narrow brackets do not work with covers.

BRACKETS:

Item #	Proj.	Tube Clearance			Width
		1 1/4"	1 1/2"	2"	
RSB10	1 5/8"	1"	7/8"	5/8"	2 1/4"
RSB20	2 1/8"	1 1/2"	1 3/8"	1 1/8"	2 1/4"

Zinc. Work with bracket covers.

Item #	Proj.	Tube Clearance			Width
		1 1/4"	1 1/2"	2"	
RSNB10	1 5/8"	1"	7/8"	5/8"	1 1/2"
RSNB20	2 1/8"	1 1/2"	1 3/8"	1 1/8"	1 1/2"
RSNB30	2 7/8"	2 1/4"	2 1/8"	1 7/8"	1 1/2"

Zinc. Don't work with bracket covers.

MEASUREMENT

Step 1. See Figure 2.

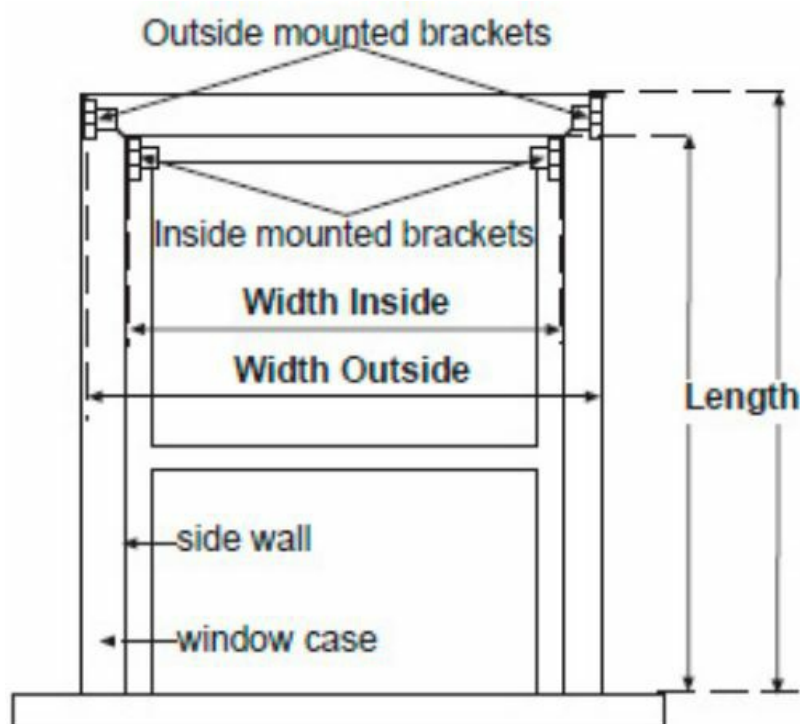


Figure 2. Measurements on a window

- **A. Inside Mount:** Measure the Width inside the casing (jam-to-jam, or casing-to-casing), where the brackets will be installed; and the Length from the top of the bracket to the bottom of the window. Mark your location.
- **B. Outside Mount:** Measure the Width outside between the outer edges of the window trim where the brackets will be installed; and the Length from the top of the bracket to the bottom of the window. Mark your location.
- **NOTE:** Measure all windows for accuracy even though they may look the same.

INSTALLATION

- **Step 1.** Mount the brackets to the window casing according to the marked locations in Figure 2 (see above). Figure 3 shows the proper bracket placement options. The left and right Skyline brackets are identical so the motor can be mounted on the left or the right side.

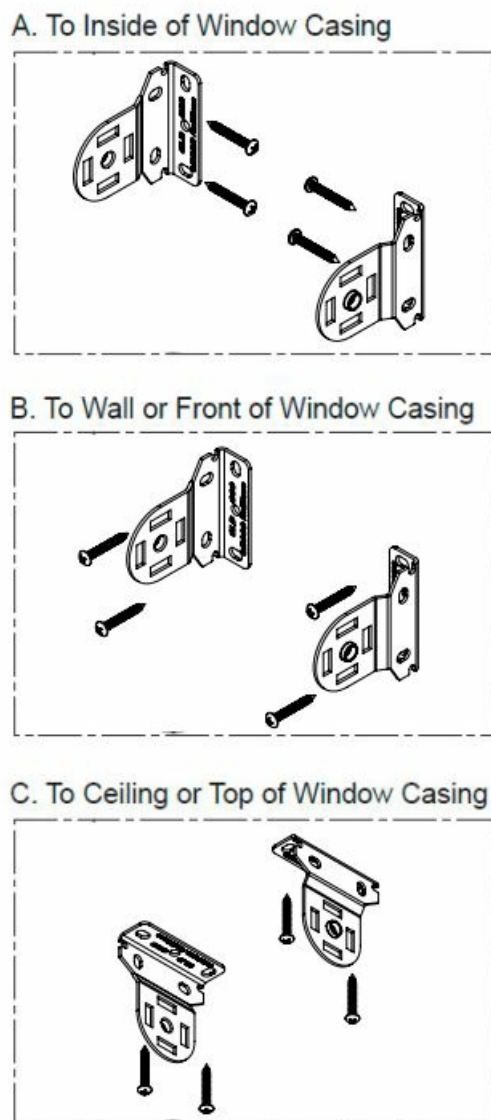


Figure 3. Install Brackets

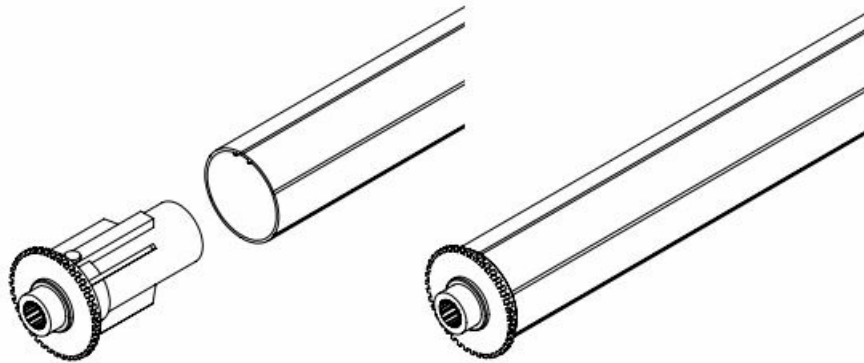
- **Step 2.** Mark and mount the Easy Link bracket between the two end brackets, determined by the min. and max. allowable shade size and roller tube length. Measure the location of Easy Link bracket using the centerline of the bracket arm, not the mounting holes.



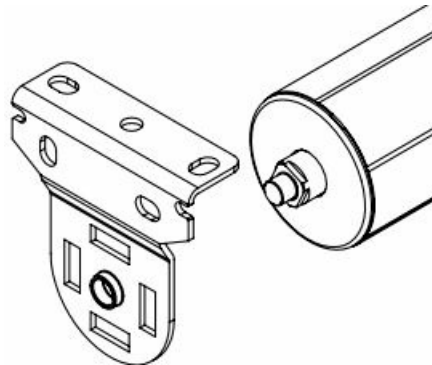
- **Step 3.** Install the Easy Link Bearing into the bracket. The groove on the OD of the bearing will clip into the bracket



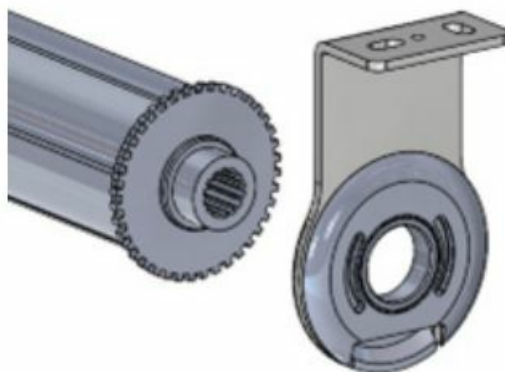
- **Step 4.** Install the Female Drive into the end of the Tube. Make sure to align the groove in the tube with the large spline on the female drive.



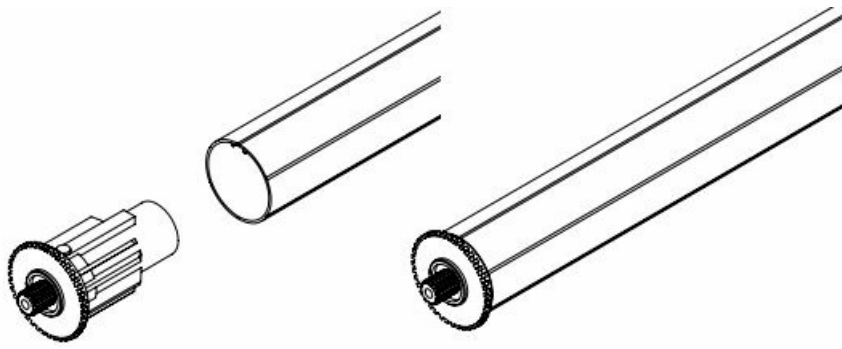
- **Step 5.** Insert the heavy-duty end pin side of the tube into the center hole of the wall bracket.



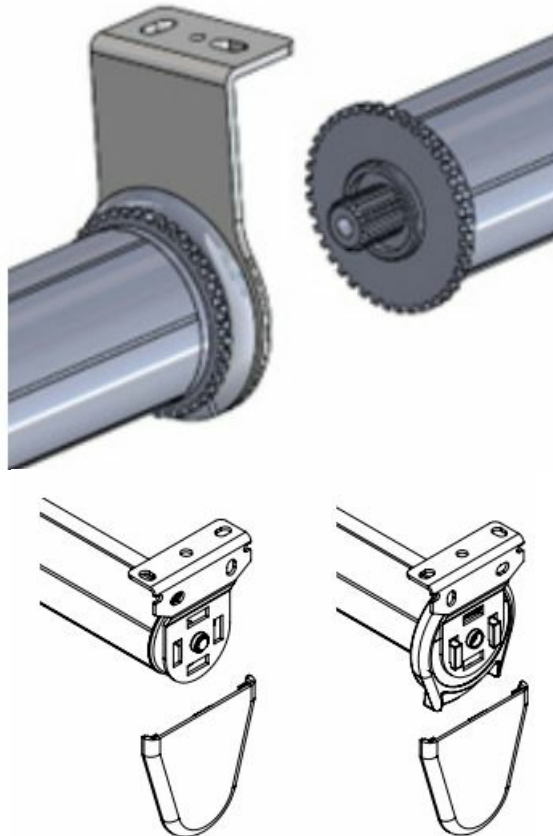
- **Step 6.** Rotate the splined collar on the Female Drive End, which will retract the spring-loaded pin to be inserted into the hole in the bearing.



- **Step 7.** Install the Male Drive into the end of the Tube. Make sure to align the groove in the tube with the large spline on the male drive.



- **Step 8.** Rotate the splined collar on the Male Drive end, this will retract the spring loaded pin to be inserted into the hole in the bearing. Make sure both male and female drives are connected to each other in the bearing.

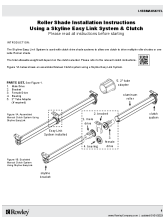


- **Step 9.** Slide the bracket covers onto the brackets.






DOWNLOAD INSTRUCTIONS: www.RowleyCompany.com updated 01/01/2023

Documents / Resources

	<p>Rowley Roller Shade Using Skyline Easy Link System and Clutch [pdf] Instructions I-1BBMANSKYEL, Roller Shade Using Skyline Easy Link System and Clutch, Roller Shade, Skyline Easy Link System and Clutch</p>
--	---

References

-  [Drapery Workroom & Upholstery Supplies | Rowley](#)
-  [rowleycompany.scene7.com/is/content/rowleycompany/rowley-product-instruc-skyline-roller-clutch-shadespdf](#)
-  [s7d2.scene7.com/is/content/rowleycompany/rowley-product-instruc-shades-skyline-easylink-manualpdf](#)

Manuals+.