



# ROWENTA TT618030 Prelude Toaster Maker Machine User Manual

[Home](#) » [Rowenta](#) » ROWENTA TT618030 Prelude Toaster Maker Machine User Manual 

## Contents

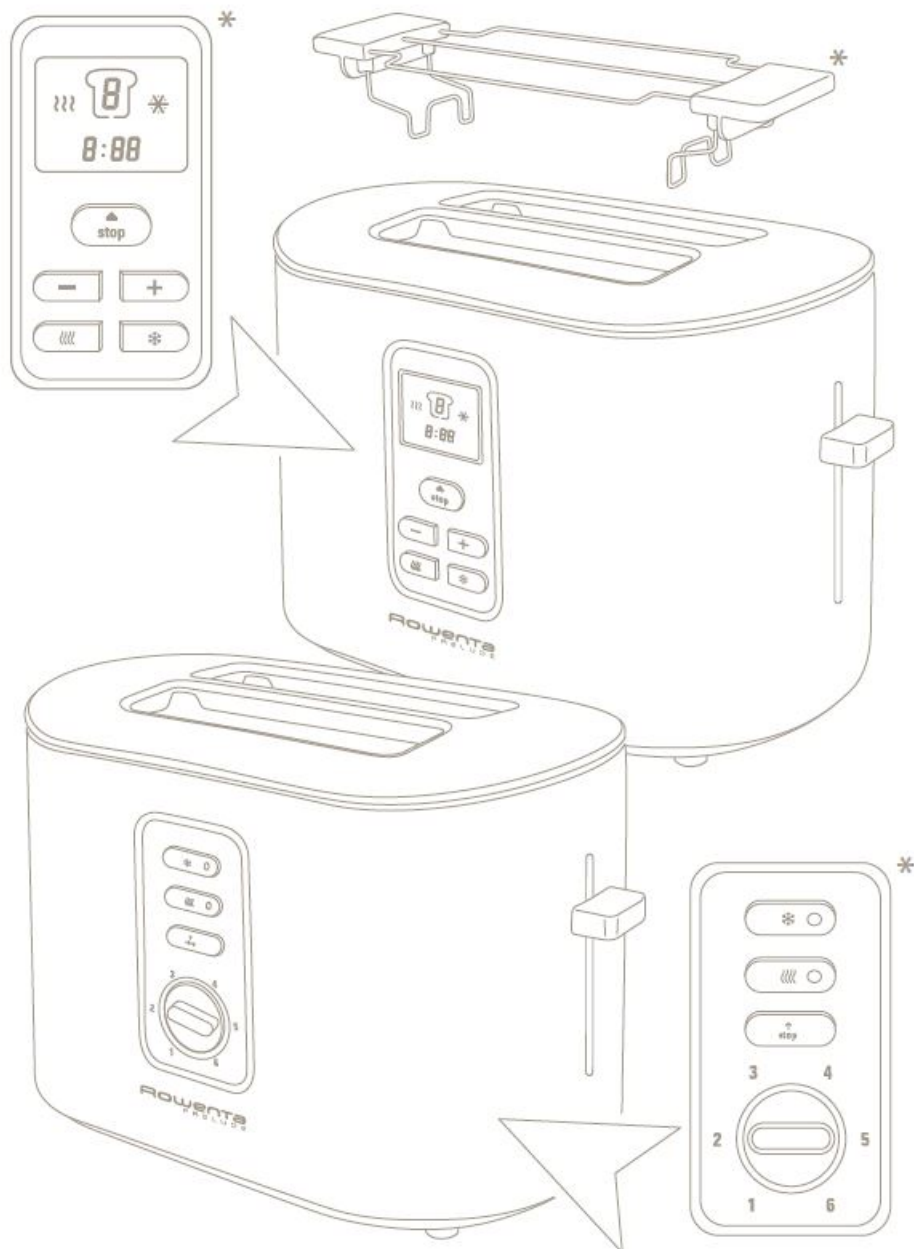
- 1 ROWENTA TT618030 Prelude Toaster Maker Machine
- 2 Depending on model
- 3 Whats inbox?
- 4 MethodStop eject
- 5 Procedures
- 6 Intent to used
- 7 Cleaning
- 8 Safety instructions
- 9 Regularly remove crumbs from the crumb tray
- 10 Environment protection first
- 11 Documents / Resources
  - 11.1 References
- 12 Related Posts

ROWENTA

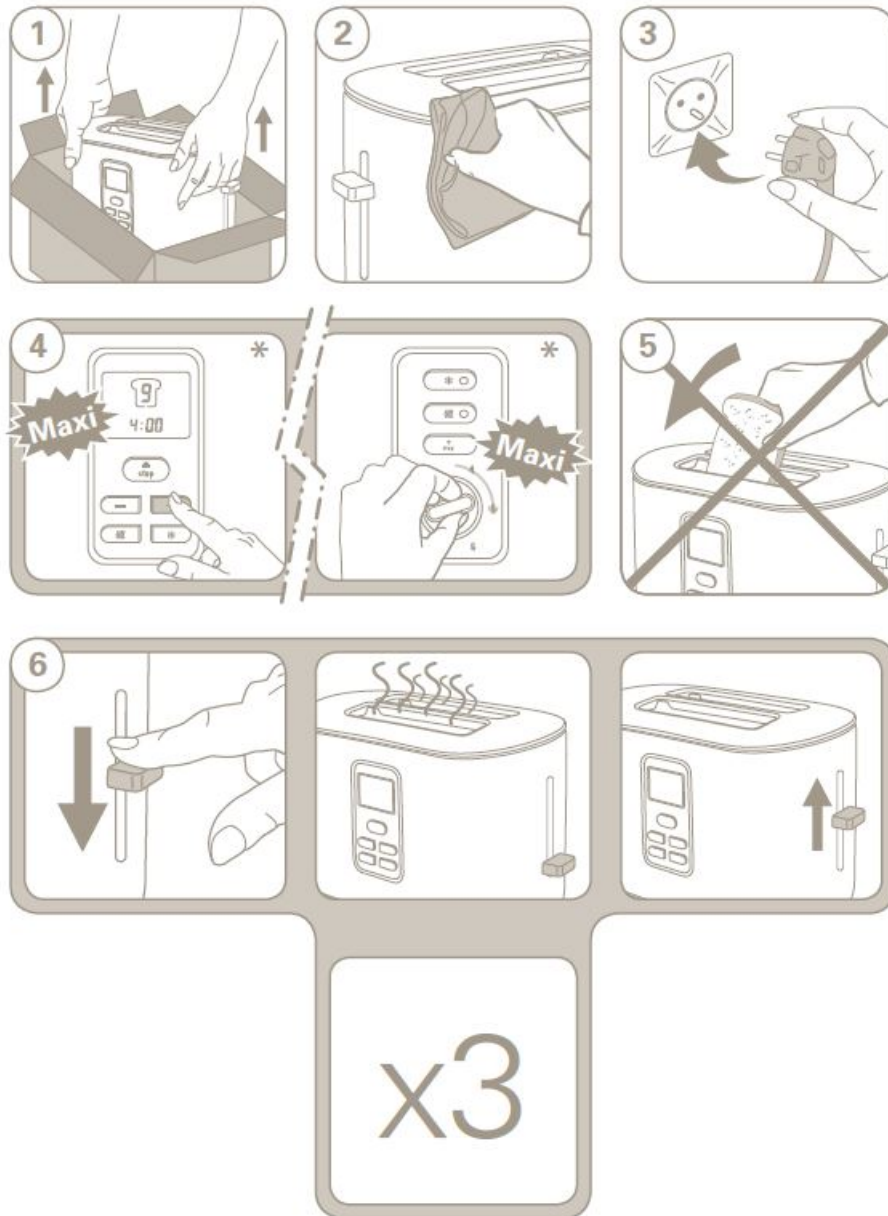
## ROWENTA TT618030 Prelude Toaster Maker Machine



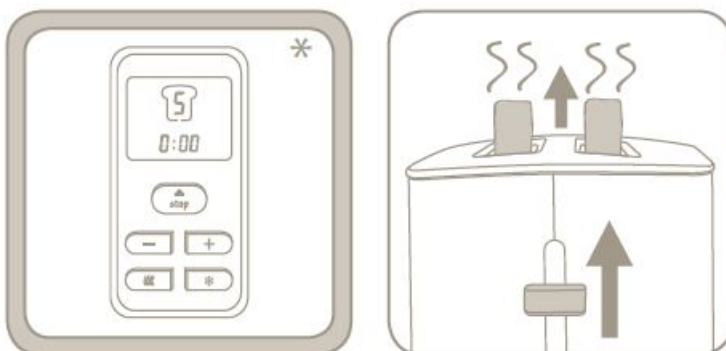
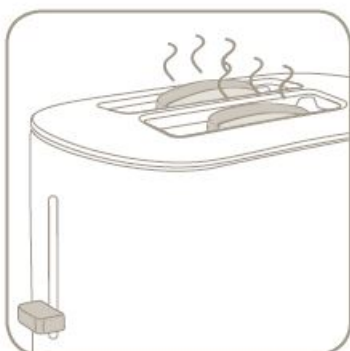
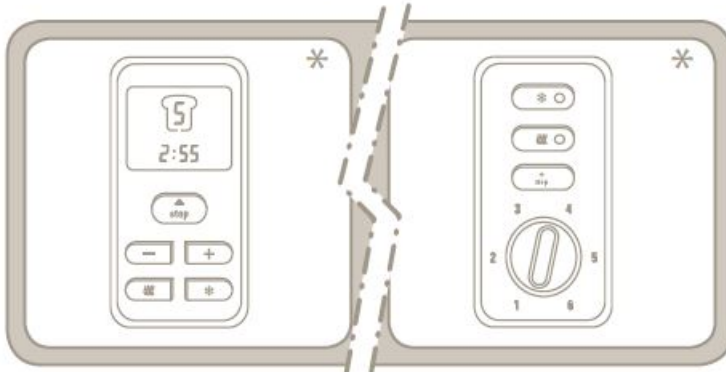
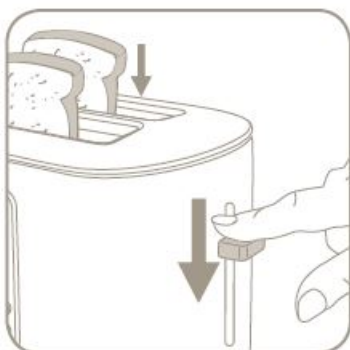
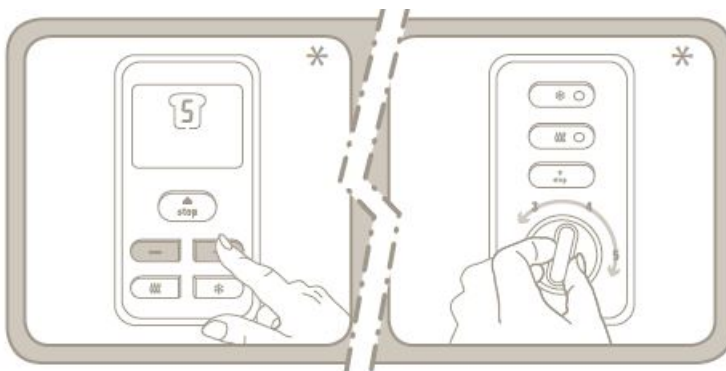
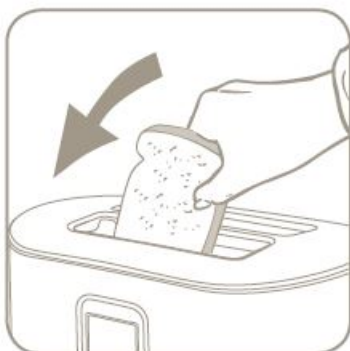
Depending on model



## Whats inbox?



## Method



Stop eject



## Procedures

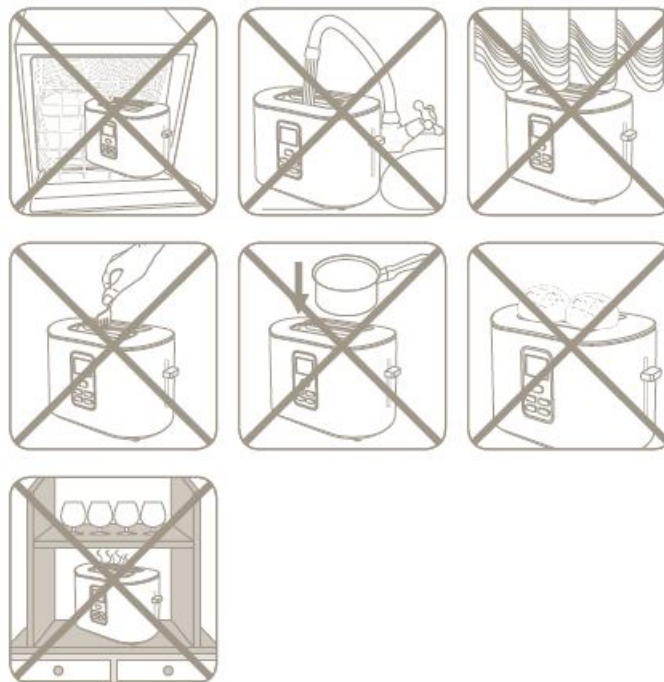
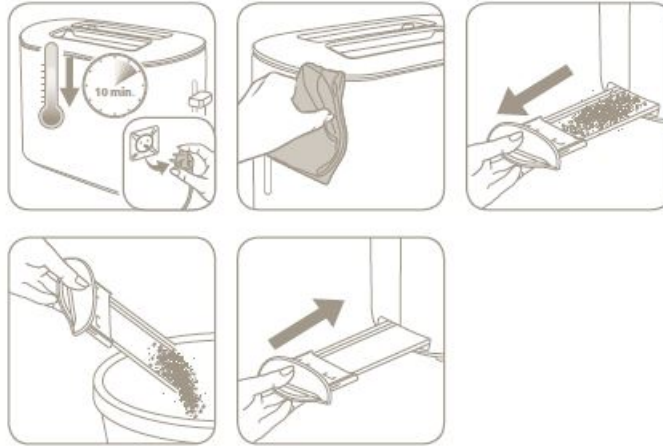


## Intent to used





## Cleaning



## Safety instructions

### Important safeguards:

- The first time the appliance is used, you may notice some fumes and a small amount of smoke, this is normal and will quickly disappear.
- This toaster complies with the European Directives "89/336/EEC" and "72/23/EEC" and conditions in effect, and with the following directives.
- In accordance with the CSC notice of 2/12/04, this product features a mechanical design allowing the bread ejection mechanism to be detached from the power cut-off element.
- Check that the electricity supply voltage corresponds to the voltage indicated on the appliance (ac current only).
- Given the many standards in effect, if this toaster is used in a country other than the country where it was purchased, have it checked by an approved service centre (see enclosed after sales service information).
- Check that the electricity installation is sufficient to supply the power required by this appliance.
- Always plug the toaster into an earthed socket.

- Use extension leads which are in good condition, with an earthed connection, and with a minimum rating of 10A. To prevent any accidents
- When using electrical appliances, basic safety precautions should always be followed:

**Do:**

- Carefully read and follow all the instructions for use.
- Close supervision is necessary when the toaster is used by or near children or certain disabled persons who are not familiar with these instructions and should only use this toaster under surveillance of a responsible adult.
- The toaster must always be used in the upright position, never on its side or tilted forwards or backwards.
- Before each use make sure that the crumb door is fitted correctly.

## **Regularly remove crumbs from the crumb tray**

- The bread control lever must be in the “Up” position before plugging in or unplugging the appliance.
- Unplug the appliance if it shows any working abnormalities.
- Unplug from the power socket when not in use during and before cleaning. Allow to cool down before cleaning or storing.
- To disconnect remove the plug from the wall socket (when the toasting cycle is finished).
- If the bread jams in the slots after toasting and the elements do not switch off, disconnect the plug immediately and wait for the appliance to cool before attempting to remove the bread.
- Bread can burn; therefore do not use this appliance near any flammable materials such as curtains, under shelving or under wall cupboards.
- Use on a flat, stable heat-resistant work surface, away from any contact with water and never use underneath a built in kitchen alcove.

**Do not:**

- Do not let the toaster operate unattended, particularly when toasting for the first time or when settings have been changed.
- Do not store the cord or the plug between the slots in the appliance.
- Do not disconnect the appliance by pulling on the cord.
- Do not move or carry the appliance during use.
- This appliance is not intended for use by children or other persons without assistance of supervision if their physical, sensory or mental capabilities prevent them from using it safely.
- Young children should be supervised to ensure they do not play with the appliance.
- Do not leave the appliance within the reach of children.
- Do not leave the appliance within the reach of children.
- Do not use the appliance for any other use other than that for which it was designed.
- Do not touch the metal parts or hot surfaces of the appliance when it is working.
- Oversized foods, metal foil packages, or utensils (spoon, knife, etc.) must not be inserted into a toaster as they may cause an electric shock or fire.
- Do not use accessory attachments that are not recommended by the manufacturer as this may be dangerous.
- To protect yourself against an electrical shock do not immerse the cord, plugs, or appliance in water or other liquids.
- Do not place any sugar coated type of bread in the toaster or anything that may melt or drop into the toaster,

do not toast small pieces of bread or croutons as this may cause damage to the toaster or a risk a fire.

- Do not try to toast very thick slices of bread that could become stuck in the toasting slots.
- Do not use this appliance if:
  - it has a damaged cord.
  - the appliance has been dropped and has visible damage or does not operate properly.
- in any of these instances, the appliance must be sent to your local approved after-sales service centre to avoid any risk of danger. Refer to the guarantee enclosed.
- Do not let the cord hang over the edge of the worktop or come into contact with hot surfaces.
- Do not place on or near a gas burner, electric ring/hob, or near a heated oven.
- Do not cover this appliance while in use.
- bread can burn, therefore the appliance must not be used near or below curtains and other combustible materials such as curtains, drapes or wood (shelving, cupboards...) it should be attended when in use.
- Do not put paper towels, cardboard or plastic in, on or under the toaster.
- If flames were to arise from parts of the toaster, never attempt to extinguish them with water. Unplug the appliance and smother the flames with a damp cloth.
- Do not attempt to dislodge food once the toasting cycle is engaged.
- Do not use this appliance as a source of heating or drying.
- Do not use the toaster for cooking, grilling or defrosting frozen food other than bread products.
- Do not use the appliance to toast bread and warm croissants (or similar products) at the same time.
- The metal frame can become very hot.
- Do not touch it! Use an oven glove or tongs.
- Do not use any abrasive cleaning agents (no soda-based scouring products, no scouring pads...), no metallic utensils, metal scouring pads etc.
- For appliances with a metallic finish: do not use any cleaning products designed for metals: use a soft cloth with a window or glass cleaner.
- This product has been designed for domestic use only.
- Any commercial use, inappropriate use or failure to comply with the instructions, the manufacturer accepts no responsibility and the guarantee will not apply.


## Environment protection first

Your appliance contains valuable materials which can be recovered or recycled. Leave it at a local civic waste point.



## Save these instructions

If you have any product problems or queries, please consult our website: [www.rowenta.co.uk](http://www.rowenta.co.uk)

## Documents / Resources

	<p><a href="#">ROWENTA TT618030 Prelude Toaster Maker Machine</a> [pdf] User Manual TT618030, Prelude Toaster Maker Machine, Toaster Maker Machine, Toaster Maker</p>
---	---

## References

-  [rowenta.co.uk](https://rowenta.co.uk)
-  [Rowenta USA | Garment Steamers, Steam Irons & Humidifiers](#)

Manuals+.