

Rowenta

**TN8961F4 Multistyle Easy 9
in 1 Trimmer**



Rowenta TN8961F4 Multistyle Easy 9 in 1 Trimmer Instruction Manual

[Home](#) » [Rowenta](#) » Rowenta TN8961F4 Multistyle Easy 9 in 1 Trimmer Instruction Manual 

Contents

- [1 Rowenta TN8961F4 Multistyle Easy 9-in-1 Trimmer](#)
- [2 According to model](#)
- [3 Product Overview](#)
- [4 Installation](#)
- [5 GUARANTEE](#)
- [6 Documents / Resources](#)
 - [6.1 References](#)

Rowenta

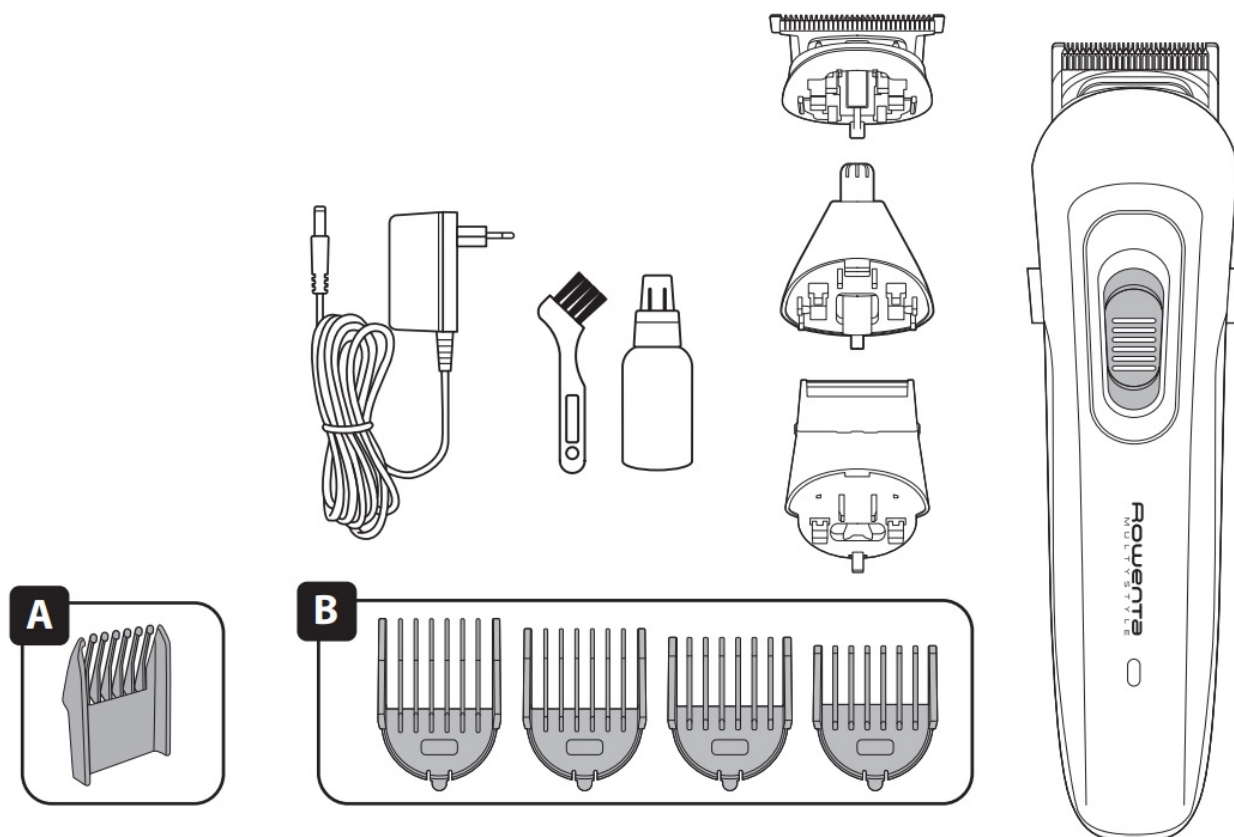
Rowenta TN8961F4 Multistyle Easy 9-in-1 Trimmer



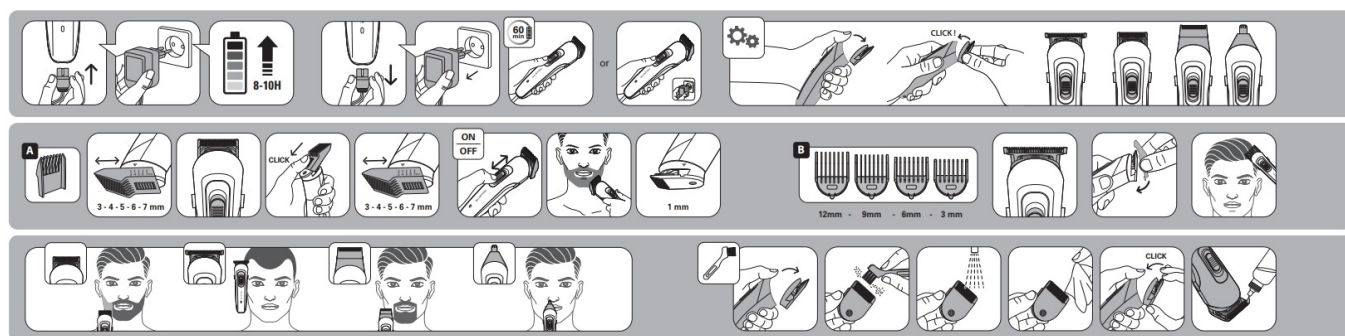
According to model

Read the instructions before use to avoid any danger due to misuse.

Product Overview



Installation



SAFETY INSTRUCTIONS

- For your safety, this appliance complies with the applicable standards and regulations (Low Voltage Directive, Electromagnetic Compatibility, Environmental...).
- Check that the voltage of your electricity supply matches the voltage of your appliance. Any error when connecting the appliance can cause irreparable harm and is not covered by the guarantee.
- The installation of the appliance and its use must however comply with the standards in force in your country.
- Hair clippers can be used by children aged from 3 years under supervision.
- This appliance can be used by children aged 8 years and above and persons with reduced physical, sensory, or mental capabilities or lack of experience and knowledge if they have been given supervision or instruction concerning the use of the appliance safely and understand the hazards involved. Children shall not play with the appliance. Cleaning and user maintenance shall not be done by children without supervision.
- If the supply cord is damaged, it must be replaced by the manufacturer, its service agent, or a similarly qualified person to avoid a hazard.
- **CAUTION:** Keep the appliance dry.
- **WARNING:** To recharge the battery, only use the detachable supply unit provided with this appliance.

- Warning: 799: « Detachable supply unit » The appliance must only be used with the power pack supplied 79
- Never use your appliance with wet hands or near water contained in bathtubs, showers, sinks, or other containers...
- When using the appliance in the bathroom, unplug it after use as the presence of water nearby may pose a danger even when the appliance is turned off.
- The battery must be removed from the appliance before it is scrapped;
- The appliance must be disconnected from the supply mains when removing the battery;
- The battery is to be disposed of safely.
- This appliance contains batteries that are only replaceable by skilled persons.
- This appliance is not intended for use by persons (including children) with reduced physical, sensory, or mental capabilities, or lack of experience and knowledge unless they have been given supervision or instruction concerning the use of the appliance by a person responsible for their safety.
- Children should be supervised to ensure that they do not play with the appliance.
- The appliance must be unplugged:
 - Before cleaning and maintenance procedures.
 - If it is not working correctly.
 - As soon as you have finished using it.
 - If you leave the room, even momentarily.
- Do not use it if the cord is damaged.
- Do not immerse or put under running water, even for cleaning purposes.
- Do not hold it with damp hands.
- Do not unplug by pulling on the cord, rather pull out by the plug.
- Do not use an electrical extension lead.
- Do not clean with abrasive or corrosive products.
- Do not use at temperatures below 0°C and above 35°C.
- Stop using your appliance and contact an Authorised Service Centre if:
 - Your appliance has fallen.
 - It does not work correctly.

GUARANTEE

Your appliance is designed for use in the home only. It should not be used for professional purposes. The guarantee becomes null and void in the case of improper usage.

ENVIRONMENT PROTECTION FIRST!

Your appliance contains valuable materials that can be recovered or recycled. Leave it at a local civic waste collection point.

Recycling the batteries






Before removing the NiMH batteries, discharge them completely. Open the battery compartment using a tool, cut all the connections, and then safely recycle the batteries. These instructions are also available on our website www.rowenta.com.

Documents / Resources



[Rowenta TN8961F4 Multistyle Easy 9 in 1 Trimmer](#) [pdf] Instruction Manual
TN8961F4 Multistyle Easy 9 in 1 Trimmer, TN8961F4, Multistyle Easy 9 in 1 Trimmer, Easy 9 in 1 Trimmer, Trimmer

References

-  [electrocycle.com](#)
-  [Rowenta | Pegle, Usisivači i Fenovi Za Kosu](#)
-  [Rowenta | Enjoy Technology](#)
-  [Rowenta | Pequenos Eletrodomésticos | Aspiradores, Ferros de Engomar, Cuidado do Lar e Beleza](#)
-  [Rowenta | Enjoy Technology](#)
- [User Manual](#)

[Manuals+](#), [Privacy Policy](#)

This website is an independent publication and is neither affiliated with nor endorsed by any of the trademark owners. The "Bluetooth®" word mark and logos are registered trademarks owned by Bluetooth SIG, Inc. The "Wi-Fi®" word mark and logos are registered trademarks owned by the Wi-Fi Alliance. Any use of these marks on this website does not imply any affiliation with or endorsement.