



# ROWENTA TN8200E4 Multistyle Precision Trimmer User Manual

[Home](#) » [Rowenta](#) » ROWENTA TN8200E4 Multistyle Precision Trimmer User Manual 

## Contents

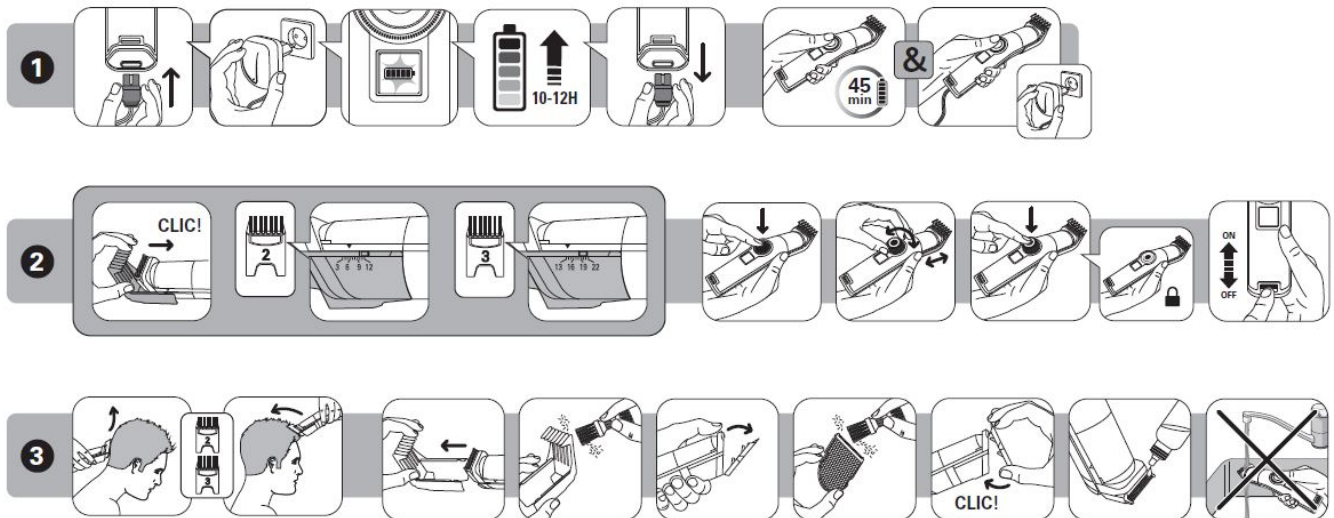
- [1 ROWENTA TN8200E4 Multistyle Precision Trimmer](#)
- [2 Assembly](#)
- [3 SAFETY INSTRUCTIONS](#)
- [4 GUARANTEE](#)
- [5 Documents / Resources](#)
  - [5.1 References](#)
- [6 Related Posts](#)

**ROWENTA**




## ROWENTA TN8200E4 Multistyle Precision Trimmer

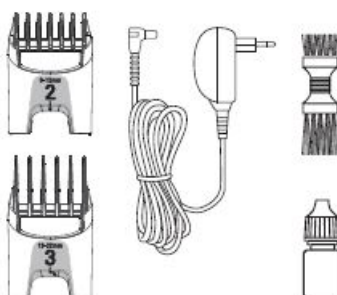


Before using for the first time, charge the device up using the adapter for 12 hours



## Assembly

		
		2 mm
3 mm	13 mm	
4 mm	14 mm	
5 mm	15 mm	
6 mm	16 mm	
7 mm	17 mm	
8 mm	18 mm	
9 mm	19 mm	
10 mm	20 mm	
11 mm	21 mm	
12 mm	22 mm	



## SAFETY INSTRUCTIONS

- For your safety, this appliance complies with the applicable standards and regulations (Low Voltage Directive, Electromagnetic Compatibility, Environmental...).
- Check that the voltage of your electricity supply matches the voltage of your appliance. Any error when connecting the appliance can cause irreparable harm, not covered by the guarantee.
- The installation of the appliance and its use must however comply with the standards in force in your country.
- **CAUTION:**  
Never use your appliance with wet hands or near water contained in bath tubs, showers, sinks or other containers...
- When using the appliance in the bathroom, unplug it after use as the presence of water nearby may pose a danger even when the appliance is turned off.
- This appliance is not intended for use by persons (including children) with reduced physical, sensory or mental capabilities, or lack of experience and knowledge, unless they have been given supervision or instruction concerning use of the appliance by a person responsible for their safety.
- Children should be supervised to ensure that they do not play with the appliance.
- The appliance must be unplugged:
  - before cleaning and maintenance procedures.
  - if it is not working correctly.
  - as soon as you have finished using it.
  - if you leave the room, even momentarily.
- Do not use if the cord is damaged.

- Do not immerse or put under running water, even for cleaning purposes.
- Do not hold with damp hands.
- Do not hold the appliance by the casing, which is hot, but by the handle.
- Do not unplug by pulling on the cord, rather pull out by the plug.
- Do not use an electrical extension lead.
- Do not clean with abrasive or corrosive products.
- Do not use at temperatures below 0°C and above 35°C.
- Stop using your appliance and contact an Authorised Service Centre if:
  - your appliance has fallen.
  - it does not work correctly.
  - The appliance must only be used with the power pack supplied model N° 20100010
  - Input : 100-240V – 50/60 Hz – max. 5,5W ; Output : 4,0V – 600 mA.

## GUARANTEE

Your appliance is designed for use in the home only. It should not be used for professional purposes. The guarantee becomes null and void in the case of improper usage.

## ENVIRONMENT PROTECTION FIRST

Your appliance contains valuable materials which can be recovered or recycled. Leave it at a local civic waste collection point. Before removing the NiMH batteries, discharge them completely. Open the battery compartment using a tool, cut all the connections and then recycle the batteries in a safe manner.

## Documents / Resources



[ROWENTA TN8200E4 Multistyle Precision Trimmer](#) [pdf] User Manual  
TN8200E4, Multistyle Precision Trimmer

## References

- [electrocycle.com](https://www.electrocycle.com)
- [Rowenta USA | Garment Steamers, Steam Irons & Humidifiers](#)