

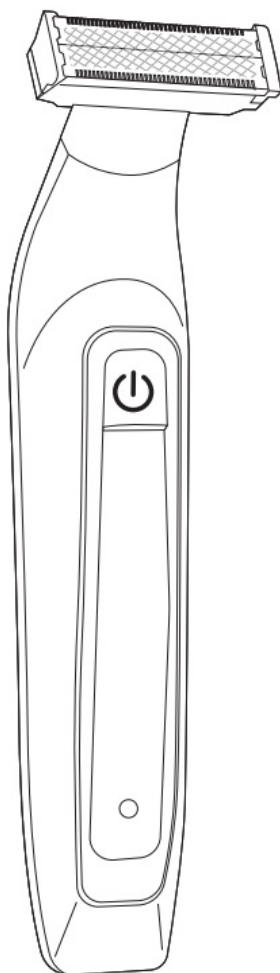


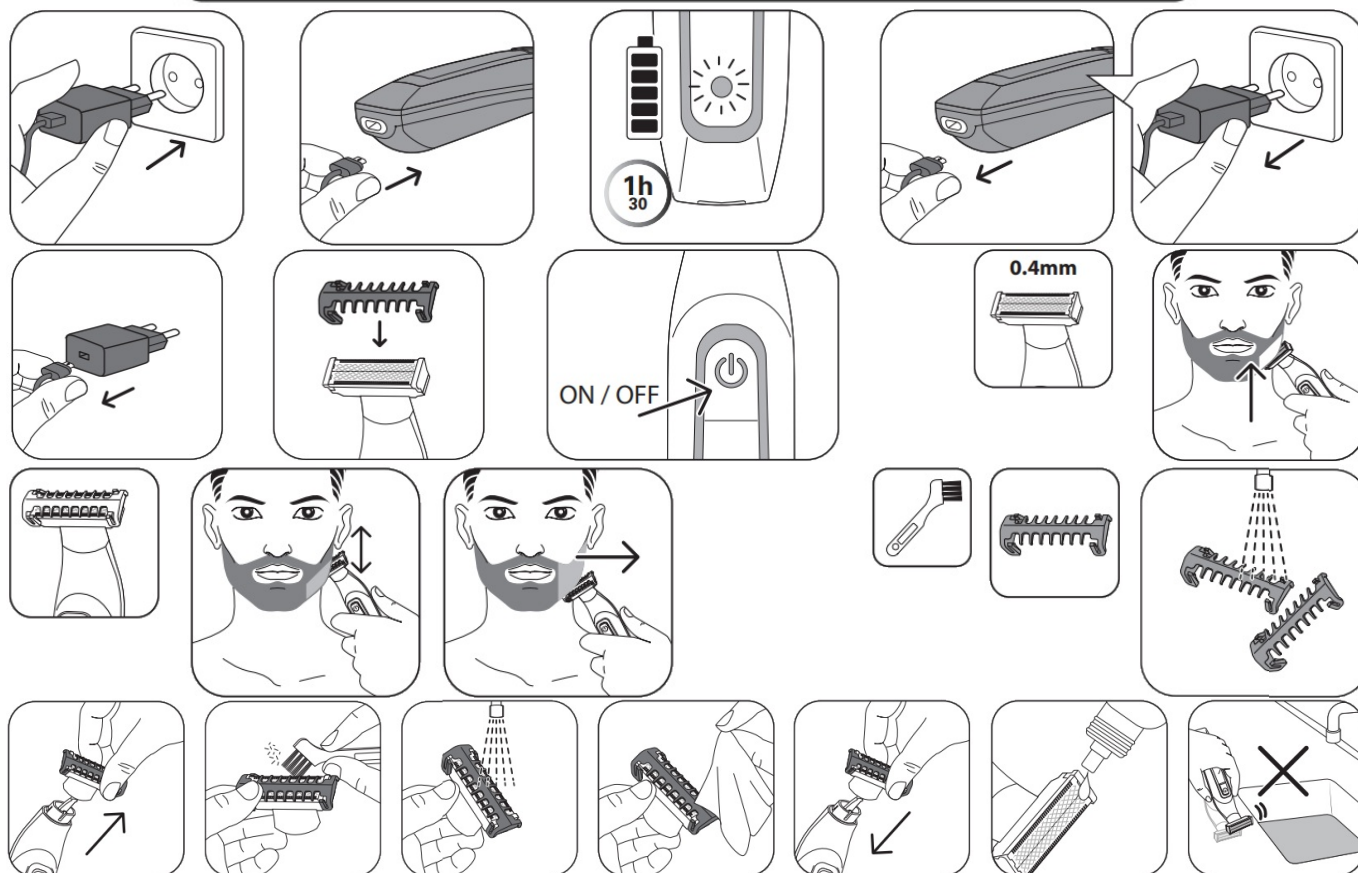
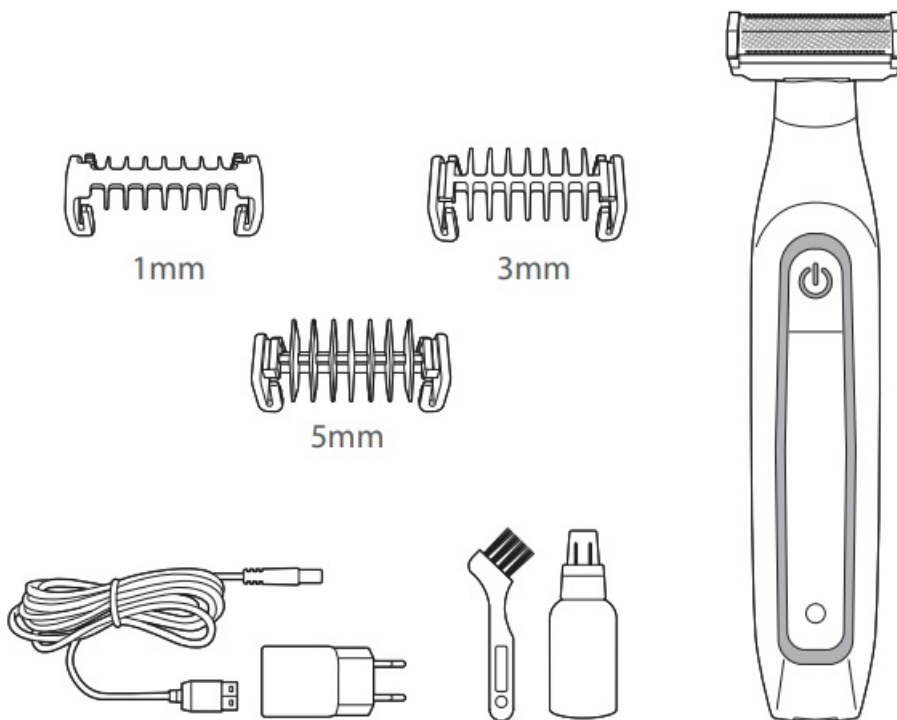
Rowenta TN6000 Forever Sharp User Manual

[Home](#) » [Rowenta](#) » Rowenta TN6000 Forever Sharp User Manual 

Rowenta®

TN6000 Forever Sharp
User Manual





Read the instructions before use to avoid any danger due to misuse.

Hybrid groomer

Contents

1 SAFETY INSTRUCTIONS

2 GUARANTEE



3 ENVIRONMENT PROTECTION FIRST!

4 Documents / Resources

4.1 References

5 Related Posts

SAFETY INSTRUCTIONS

- For your safety, this appliance complies with the applicable standards and regulations (Low Voltage Directive, Electromagnetic Compatibility, Environmental...).
- Check that the voltage of your electricity supply matches the voltage of your appliance. Any error when connecting the appliance can cause irreparable harm and is not covered by the guarantee.
- The installation of the appliance and its use must however comply with the standards in force in your country.
- This multi-trimmer can be used by children aged from 3 years under supervision.
- This appliance can be used by children aged from 8 years and above and persons with reduced physical, sensory or mental capabilities or lack of experience and knowledge if they have been given supervision or instruction concerning use of the appliance in a safe way and understand the hazards involved. Children shall not play with the appliance. Cleaning and user maintenance shall not be made by children without supervision.
- If the supply cord is damaged, it must be replaced by the manufacturer, its service agent or similarly qualified persons in order to avoid a hazard.
-  **WARNING:** The parts held in the hand must be unplugged before being cleaned with water. Suitable for use in the bathtub or under the shower. May be cleaned under running water.
- **WARNING:** For the purposes of recharging the battery, only use the detachable supply unit provided with this appliance.
-  Detachable supply unit 0950: The appliance must only be used with the power pack supplied 0950.
- This appliance contains batteries that are only replaceable by skilled persons.
- The appliance must be disconnected from the supply mains when removing the battery.
- The battery must be removed from the appliance before it is scrapped.
- The appliance is not intended to operate while loading.
- The battery is to be disposed of safely.
- This appliance is not intended for use by persons (including children) with reduced physical, sensory or mental capabilities, or lack of experience and knowledge unless they have been given supervision or instruction concerning the use of the appliance by a person responsible for their safety. Children should be supervised to ensure that they do not play with the appliance.
- Stop using your appliance and contact an Authorised Service Centre if:
 - your appliance has fallen.
 - it does not work correctly.
- The appliance must be unplugged:
 - before cleaning and maintenance procedures.
 - if it is not working correctly.
 - as soon as you have finished using it.

- if you leave the room, even momentarily.
- Do not use it if the cord is damaged.
 - Do not unplug by pulling on the cord, rather pull out by the plug.
 - Do not use an electrical extension lead.
 - Do not clean with abrasive or corrosive products.
 - Do not use at temperatures above 35°C.
- The appliance must be unplugged after use, before cleaning, or in case of abnormal functioning.
- Clean your hair clipper blades with a small brush after each use

GUARANTEE

Your appliance is designed for use in the home only.

It should not be used for professional purposes.

The guarantee becomes null and void in the case of improper usage.

USING FOR THE FIRST TIME: before use, make sure your appliance is charged.

This appliance does not work in AC mode.

ENVIRONMENT PROTECTION FIRST!

Your appliance contains valuable materials which can be recovered or recycled.

Leave it at a local civic waste collection point.

Recycling the batteries.

Before removing the LI-ION batteries, discharge them completely. Open the battery compartment using a tool, cut all the connections and then recycle the batteries in a safe manner.

These instructions are also available on our website www.rowenta.com

WARNING

Lubricate the blade at each use





Rowenta®

www.rowenta.com

1820000235

Documents / Resources

	<p>Rowenta TN6000 Forever Sharp [pdf] User Manual TN6000 Forever Sharp, TN6000, Forever Sharp, Sharp</p>
	<p>Rowenta TN6000 Forever Sharp [pdf] User Manual TN6000 Forever Sharp, TN6000, Forever Sharp, Sharp</p>

References

-  [Rowenta USA | Garment Steamers, Steam Irons & Humidifiers](#)
-  [electrocycle.com](#)
-  [Rowenta USA | Garment Steamers, Steam Irons & Humidifiers](#)
-  [Saç, Vücut ve Kişisel Bakım Ürünleri | Rowenta Türkiye](#)
-  [Побутова техніка для дому та техніка для персонального догляду | Офіційний сайт Rowenta Україна](#)