



Rowenta TN4422F1 Elite Structure Precision 2 User Guide

[Home](#) » [Rowenta](#) » Rowenta TN4422F1 Elite Structure Precision 2 User Guide 

Contents

- 1 [Rowenta TN4422F1 Elite Structure Precision 2](#)
- 2 [Product Information](#)
- 3 [Product Usage Instructions](#)
- 4 [What In The Box](#)
- 5 [Power And Charging](#)
- 6 [Settings And Using Instructions](#)
- 7 [Maintenance](#)
- 8 [SAFETY INSTRUCTIONS](#)
- 9 [GUARANTEE](#)
- 10 [Documents / Resources](#)
 - 10.1 [References](#)

Rowenta®

Rowenta TN4422F1 Elite Structure Precision 2



Product Information

Specifications

- **Model Number:** 1820000095
- **Usage:** Beard Trimmer
- **Power:** Detachable supply unit 0849
- **Usage Type:** Wet & Dry
- **Trimming Lengths:** 3mm, 4mm, 5mm, 6mm, 7mm
- **Precision Trimming Length:** 1mm
- **Battery Life:** 60 minutes
- **Website:** www.rowenta.com

FAQ

- **Q:** Can I use this product for professional purposes?
 - **A:** No, this product is designed for home use only and should not be used for professional purposes.
- **Q:** How long is the battery life?

- **A:** The battery life of this product is approximately 60 minutes.
- **Q:** What are the available trimming lengths?
 - **A:** This product offers trimming lengths of 3mm, 4mm, 5mm, 6mm, and 7mm. It also has a precision trimming length of 1mm.
- **Q:** Where can I find the user instructions?
 - **A:** The user instructions are available on our website at www.rowenta.com.

Product Usage Instructions

Safety Instructions

Read the instructions before use to avoid any danger due to misuse. This appliance should only be used by individuals who have the necessary sensory or mental capabilities or have been given proper supervision or instruction concerning its safe usage and understand the hazards involved. Children should not play with the appliance. Cleaning and user maintenance should not be done by children without supervision.

Charging and Power Usage

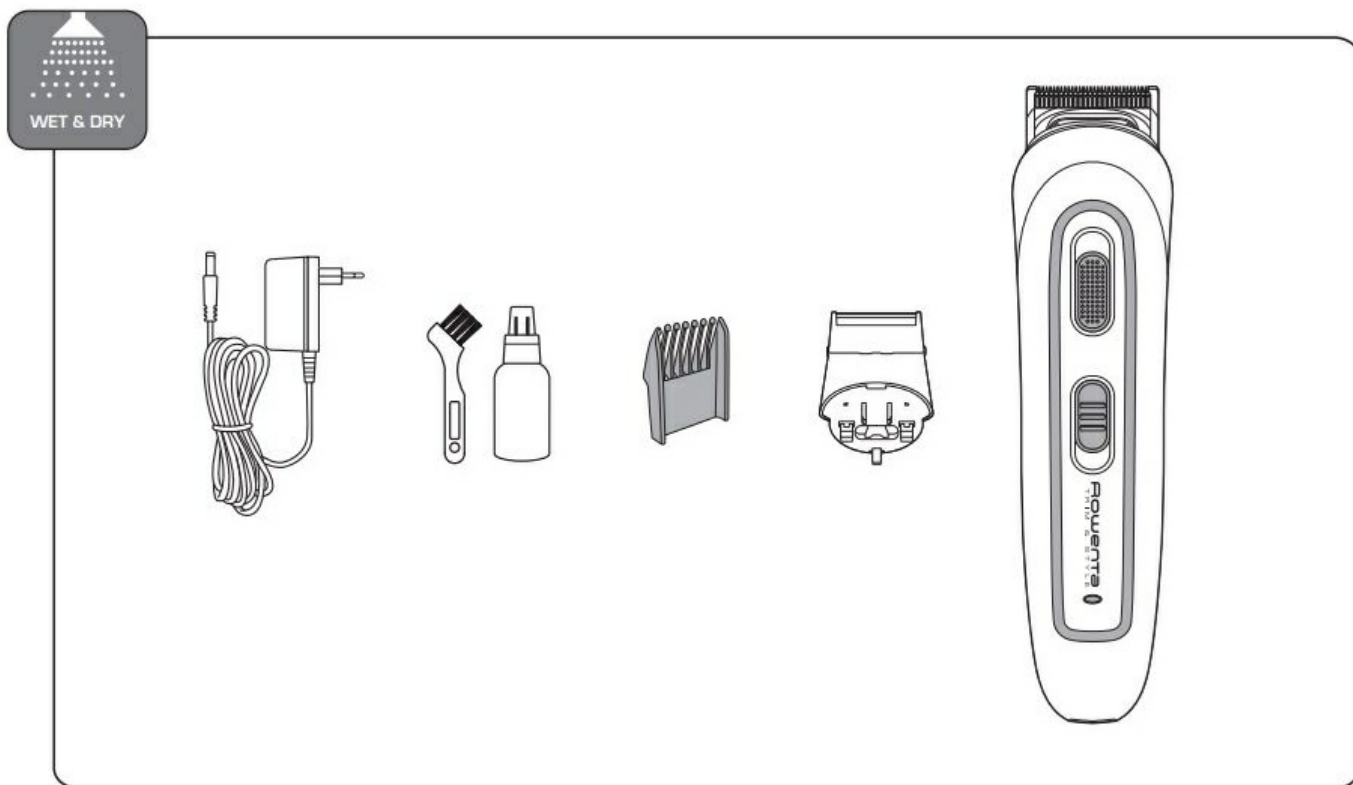
Before using the appliance for the first time, make sure it is fully charged. The appliance does not work in AC mode and should only be used with the provided power pack (detachable supply unit 0849).

Environmental Considerations

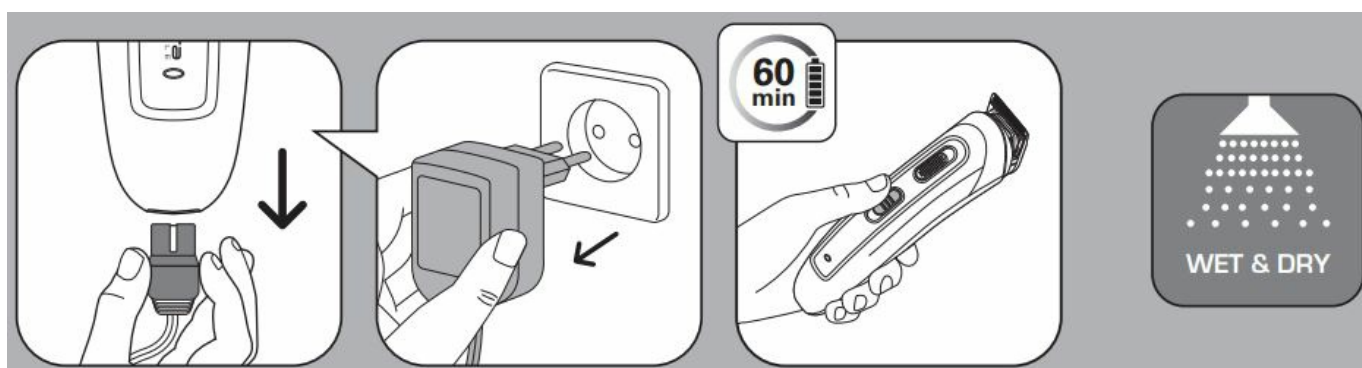
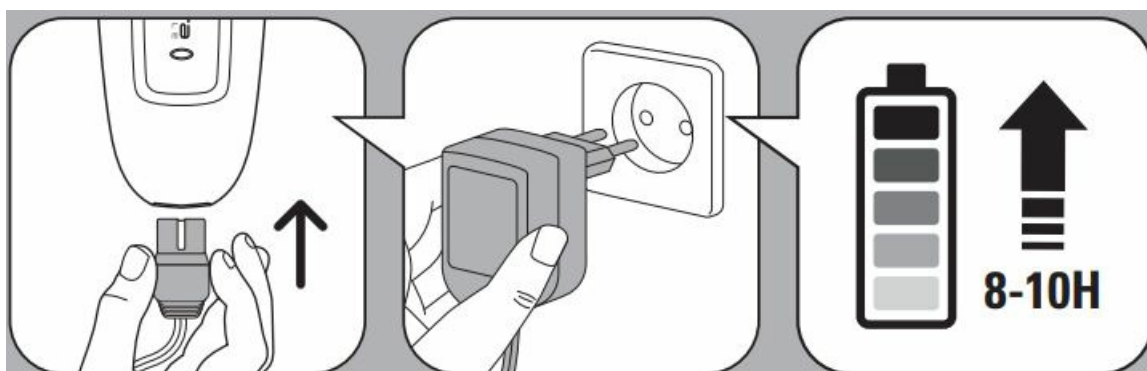
Your appliance contains valuable materials that can be recovered or recycled. Please dispose of it at a local civic waste collection point or a recognized service center for proper processing. When recycling the batteries, ensure they are completely discharged before removing them. Open the battery compartment using a tool, cut all the connections, and recycle the batteries in a safe manner.

Read the instructions before use to avoid any danger due to misuse.

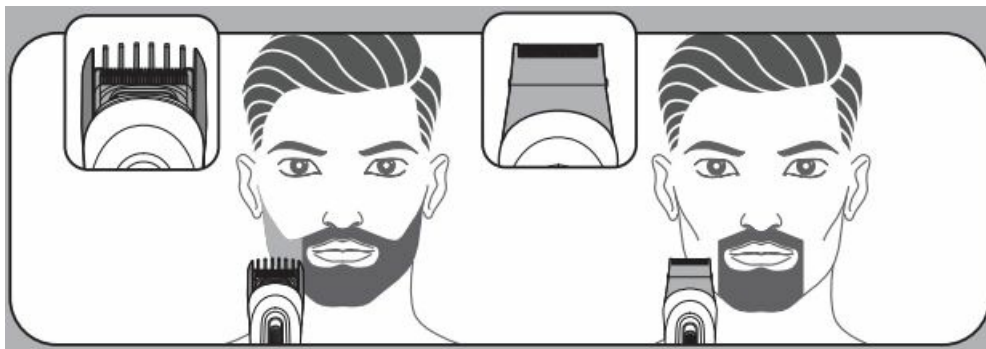
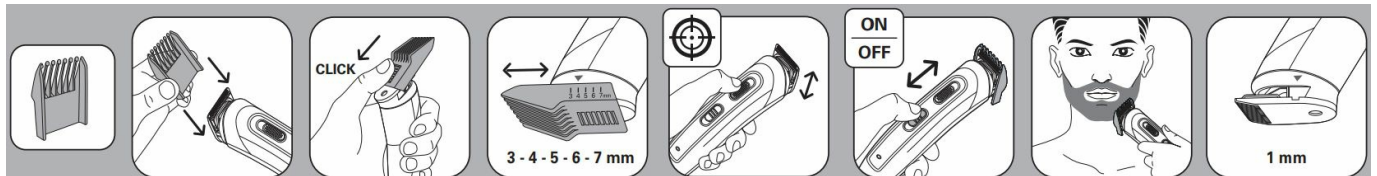
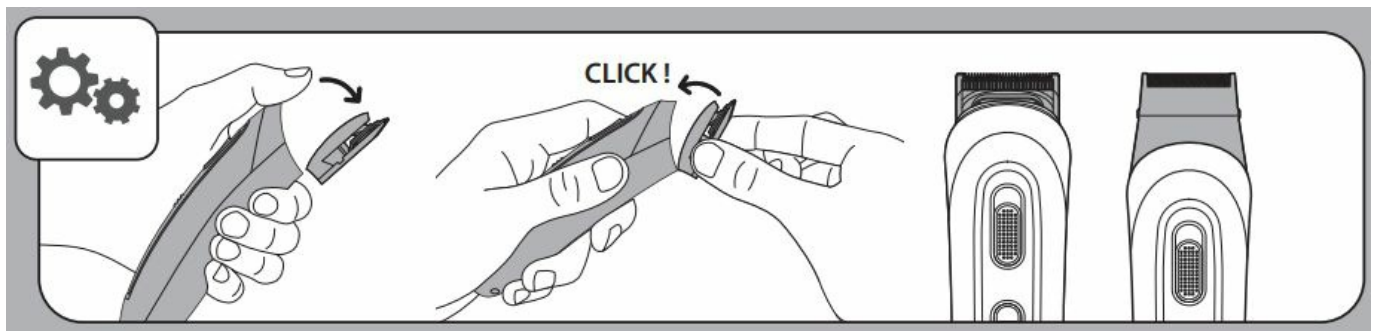
What In The Box



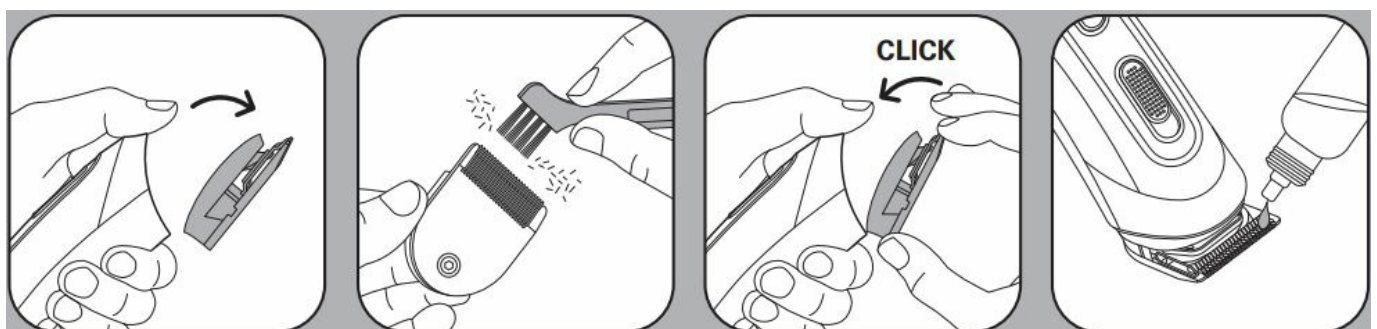
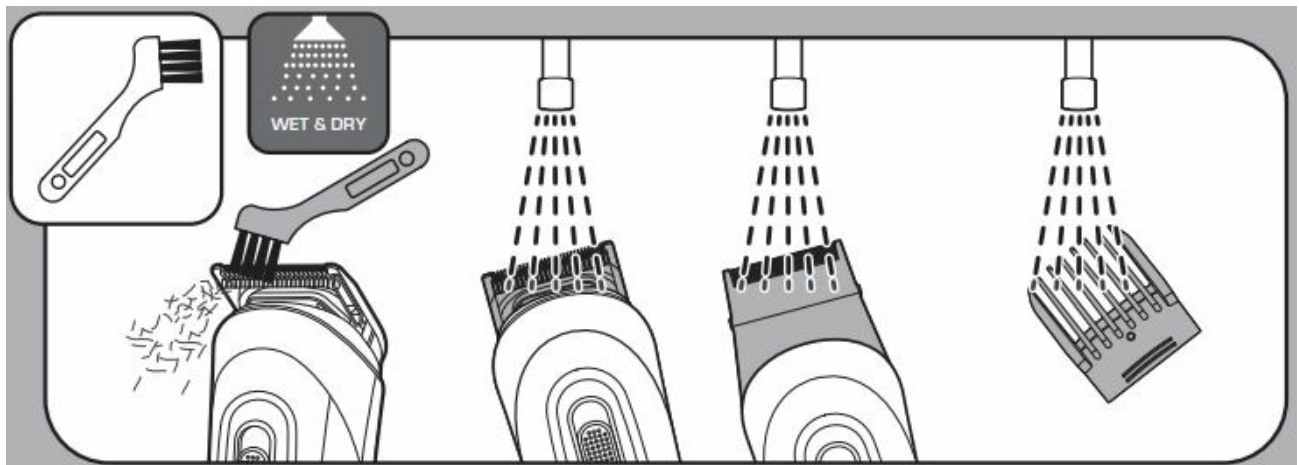
Power And Charging



Settings And Using Instructions



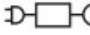
Maintenance



SAFETY INSTRUCTIONS

- For your safety, this appliance complies with the applicable standards and regulations (Low Voltage Directive, Electromagnetic Compatibility, Environmental...).
- Check that the voltage of your electricity supply matches the voltage of your appliance. Any error when connecting the appliance can cause irreparable harm, not covered by the guarantee.
- The installation of the appliance and its use must however comply with the standards in force in your country.
- This beard trimmer can be used by children aged from 3 years under supervision.
- This appliance can be used by children aged from 8 years and above and persons with reduced physical, sensory or mental capabilities or lack of experience and knowledge if they have been given supervision or instruction concerning use of the appliance in a safe way and understand the hazards involved. Children shall not play with the appliance. Cleaning and user maintenance shall not be made by children without supervision.
- If the supply cord is damaged, it must be replaced by the manufacturer, its service agent or similarly qualified persons in order to avoid a hazard.



- **WARNING:** The parts held in the hand must be unplugged before being cleaned with water. Suitable for a use in the bathtub or under the shower. May be cleaned under running water.
- **WARNING:** For the purposes of recharging the battery, only use the detachable supply unit provided with this appliance.
-  Detachable supply unit 0849: The appliance must only be used with the power pack supplied 0849.
- This appliance contains batteries that are only replaceable by skilled persons.
- The appliance must be disconnected from the supply mains when removing the battery.
- The battery must be removed from the appliance before it is scrapped.
- The battery is to be disposed of safely.
- This appliance is not intended for use by persons (including children) with reduced physical, sensory or mental capabilities, or lack of experience and knowledge, unless they have been given supervision or instruction concerning use of the appliance by a person responsible for their safety.

Children should be supervised to ensure that they do not play with the appliance.

- Stop using your appliance and contact an Authorised Service Centre if:
 - your appliance has fallen.
 - it does not work correctly.
- The appliance must be unplugged:
 - before cleaning and maintenance procedures.
 - if it is not working correctly.
 - as soon as you have finished using it.
 - if you leave the room, even momentarily.
- Do not use if the cord is damaged.
 - Do not unplug by pulling on the cord, rather pull out by the plug.
 - Do not use an electrical extension lead.
 - Do not clean with abrasive or corrosive products.
 - Do not use at temperatures below 0°C and above 35°C.

GUARANTEE

- Your appliance is designed for use in the home only.
- It should not be used for professional purposes.
- The guarantee becomes null and void in the case of improper usage.

USING FOR THE FIRST TIME: before use, make sure your appliance is charged. This appliance does not work in AC mode.

ENVIRONMENT PROTECTION FIRST!

- Your appliance contains valuable materials which can be recovered or recycled.
- Leave it at a local civic waste collection point.

Recycling the batteries

- Before removing the NiMH batteries, discharge them completely.
- Open the battery compartment using a tool, cut all the connections and then recycle the batteries in a safe manner.

These instructions are also available on our website www.rowenta.com

Documents / Resources



[Rowenta TN4422F1 Elite Structure Precision 2](#) [pdf] User Guide
TN4422F1, TN4422F1, TN4422F1 Elite Structure Precision 2, TN4422F1, Elite Structure Precision 2, Structure Precision 2, Precision 2

References

- electrocycle.com
- [Rowenta USA | Garment Steamers, Steam Irons & Humidifiers](#)
- [User Manual](#)