



RowenTa TN3800F4 Virtuo Beard Trimmer User Manual

[Home](#) » [Rowenta](#) » RowenTa TN3800F4 Virtuo Beard Trimmer User Manual 

Contents

- 1 RowenTa TN3800F4 Virtuo Beard Trimmer
- 2 Product Information:
- 3 PARTS
- 4 POWER
- 5 BATTERY
- 6 USING INSTRUCTIONS
- 7 CLEANING
- 8 SAFETY INSTRUCTIONS
- 9 GUARANTEE
- 10 Documents / Resources
 - 10.1 References
- 11 Related Posts

ROWENTA®

RowenTa TN3800F4 Virtuo Beard Trimmer



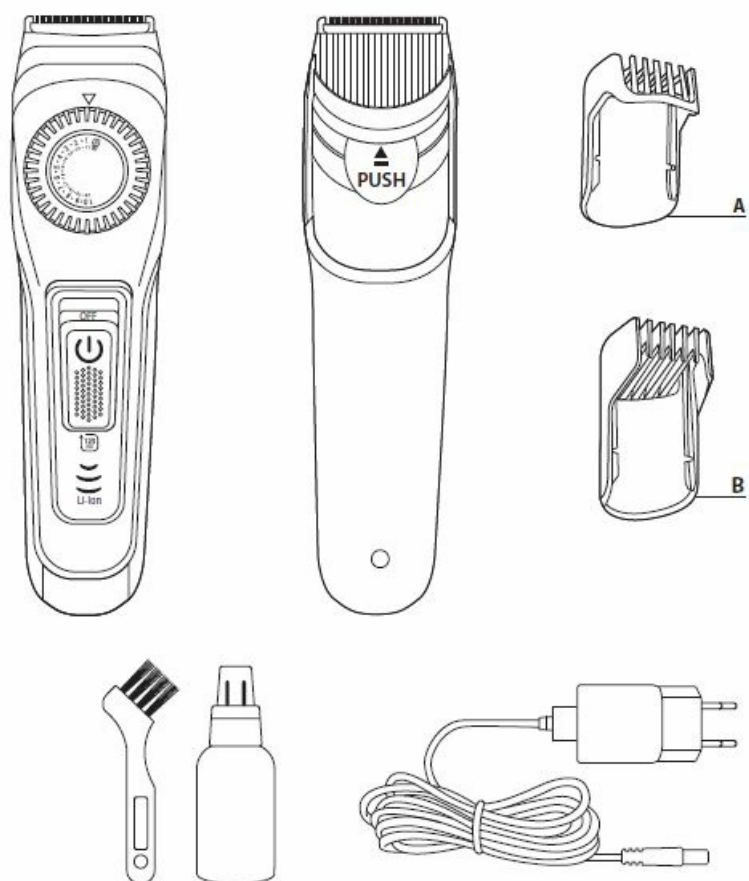
Product Information:

- **A:** This product has a feature labeled “A”.
- **B:** This product also has a feature labeled “B”.
- **Battery Type:** The product uses a Li-Ion battery.
- **Battery Charging Time:** The battery takes approximately 1 hour and 30 minutes to fully charge.
- **Battery Capacity:** The battery capacity is indicated by the following percentages:
 - 100-85%: The battery is considered fully charged.
 - 84-50%: The battery has a moderate charge.
 - 49-15%: The battery has a low charge.

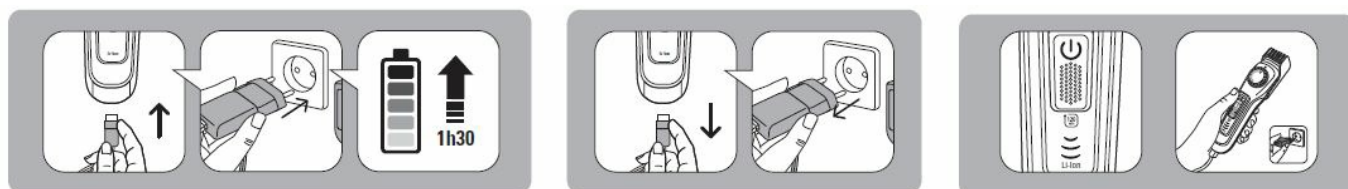
Product Usage Instructions

1. Make sure the product is turned off before performing any actions.
2. To charge the battery, connect the provided charger to the product and plug it into a power source. The charging time is approximately 1 hour and 30 minutes.
3. When the battery is fully charged, the battery indicator will show 100-85%.
4. If the battery level drops to 84-50%, consider recharging the battery soon to maintain optimal performance.
5. If the battery level drops to 49-15%, it is recommended to recharge the battery as soon as possible to avoid running out of power.
6. To turn off the product, toggle the power switch to the “OFF” position.
7. Ensure proper care and handling of the Li-Ion battery to prevent damage or accidents.

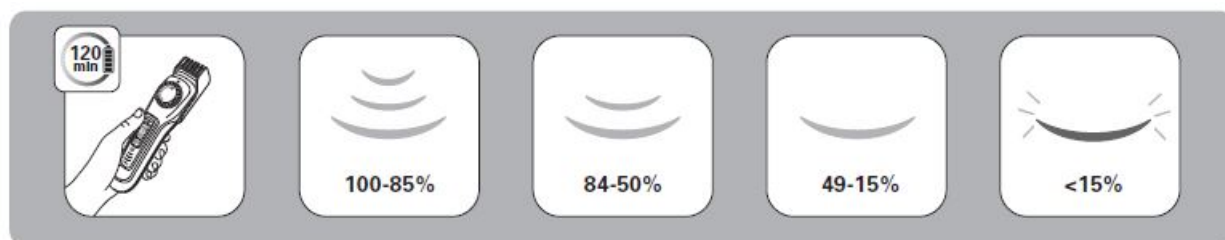
PARTS



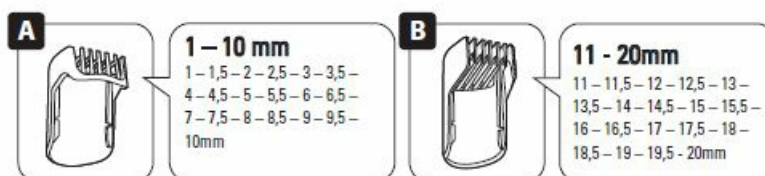
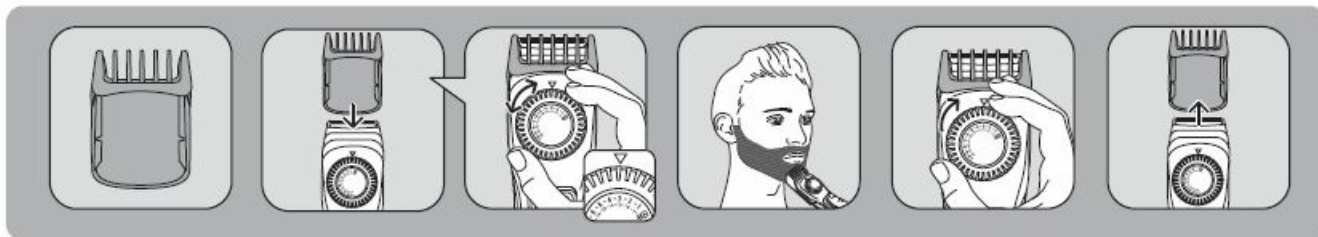
POWER



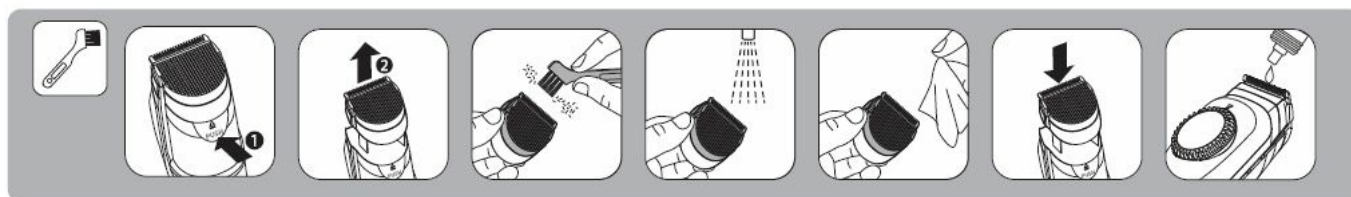
BATTERY



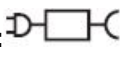
USING INSTRUCTIONS



CLEANING



SAFETY INSTRUCTIONS

- For your safety, this appliance complies with the applicable standards and regulations (Low Voltage Directive, Electromagnetic Compatibility, Environmental...).
- Check that the voltage of your electricity supply matches the voltage of your appliance. Any error when connecting the appliance can cause irreparable harm, not covered by the guarantee.
- The installation of the appliance and its use must however comply with the standards in force in your country.
- Hair clipper can be used by children aged from 3 years under supervision.
- This appliance can be used by children aged from 8 years and above and persons with reduced physical, sensory or mental capabilities or lack of experience and knowledge if they have been given supervision or instruction concerning use of the appliance in a safe way and understand the hazards involved. Children shall not play with the appliance. Cleaning and user maintenance shall not be made by children without supervision.
- If the supply cord is damaged, it must be replaced by the manufacturer, its service agent or similarly qualified persons in order to avoid a hazard.
- **CAUTION:** Keep the appliance dry.
- **WARNING :** For the purposes of recharging the battery, only use the detachable supply unit provided with this appliance.
- **Warning:**  0935 detachable supply unit: The appliance must only be used with the power pack supplied 0935
- Never use your appliance with wet hands or near water contained in bath tubs, showers, sinks or other containers...
- When using the appliance in the bathroom, unplug it after use as the presence of water nearby may pose a



danger even when the appliance is turned off.

- The battery must be removed from the appliance before it is scrapped;

- The appliance must be disconnected from the supply mains when removing the battery;
- The battery is to be disposed of safely.
- This appliance contains batteries that are only replaceable by skilled persons.
- This appliance is not intended for use by persons (including children) with reduced physical, sensory or mental capabilities, or lack of experience and knowledge, unless they have been given supervision or instruction concerning use of the appliance by a person responsible for their safety.
- Children should be supervised to ensure that they do not play with the appliance.
- The appliance must be unplugged:
 - before cleaning and maintenance procedures.
 - if it is not working correctly.
 - as soon as you have finished using it.
 - if you leave the room, even momentarily.
- Do not use if the cord is damaged.
- Do not immerse or put under running water, even for cleaning purposes.
- Do not hold with damp hands.
- Do not unplug by pulling on the cord, rather pull out by the plug.
- Do not use an electrical extension lead.
- Do not clean with abrasive or corrosive products.
- Do not use at temperature above 35°C.
- Stop using your appliance and contact an Authorised Service Centre if:
 - your appliance has fallen.
 - it does not work correctly.

GUARANTEE

- Your appliance is designed for use in the home only.
- It should not be used for professional purposes.
- The guarantee becomes null and void in the case of improper usage.

ENVIRONMENT PROTECTION FIRST



- Your appliance contains valuable materials which can be recovered or recycled.
- Leave it at a local civic waste collection point.

Recycling the batteries

Before removing the Li-ion batteries, discharge them completely. Open the battery compartment using a tool, cut all the connections and then recycle the batteries in a safe manner.

These instructions are also available on our website www.rowenta.com

Documents / Resources



[Rowenta TN3800F4 Virtuo Beard Trimmer](#) [pdf] User Manual
TN3800F4 Virtuo Beard Trimmer, TN3800F4, Virtuo Beard Trimmer, Beard Trimmer, Trimmer

References

- [electrocycle.com](#)
- [Que Faire de mes Déchets ? Découvrez les solutions pour tous vos déchets et nos conseils pour en produire moins.](#)
- [Rowenta USA | Garment Steamers, Steam Irons & Humidifiers](#)
- [Rowenta | Pequenos Eletrodomésticos | Aspiradores, Ferros de Engomar, Climatização e Beleza](#)
- [Rowenta | Enjoy Technology](#)