



ROWENTA TL626030 Preface Toster Maker Machine User Guide

[Home](#) » [Rowenta](#) » ROWENTA TL626030 Preface Toster Maker Machine User Guide 

Contents

- [1 ROWENTA TL626030 Preface Toster Maker Machine](#)
- [2 overview](#)
- [3 Before first use](#)
- [4 Toasting bread](#)
- [5 Removable croissant warmer](#)
- [6 Cleaning](#)
- [7 Safety instructions](#)
- [8 Do](#)
- [9 Save these instructions](#)
- [10 Documents / Resources](#)
 - [10.1 References](#)
- [11 Related Posts](#)

Rowenta

ROWENTA TL626030 Preface Toster Maker Machine

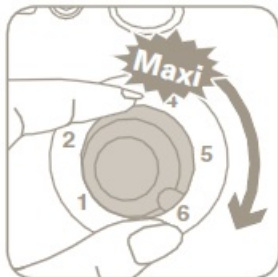
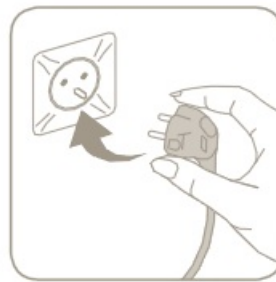


overview



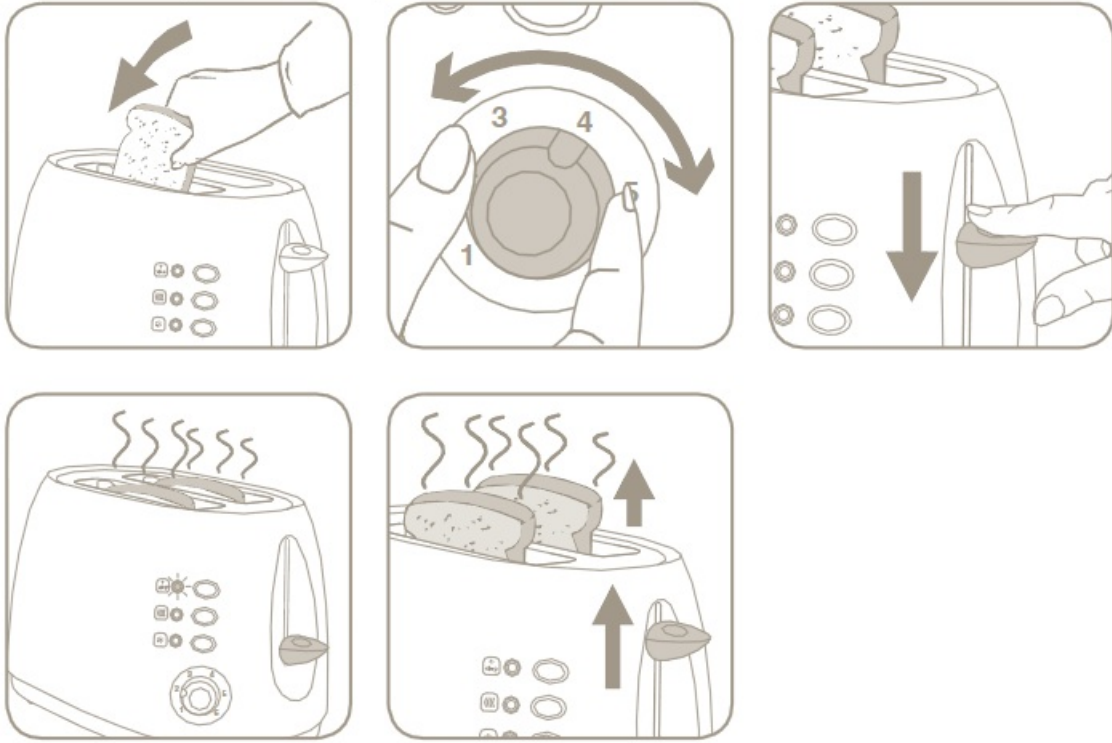
- Depending on model

Before first use

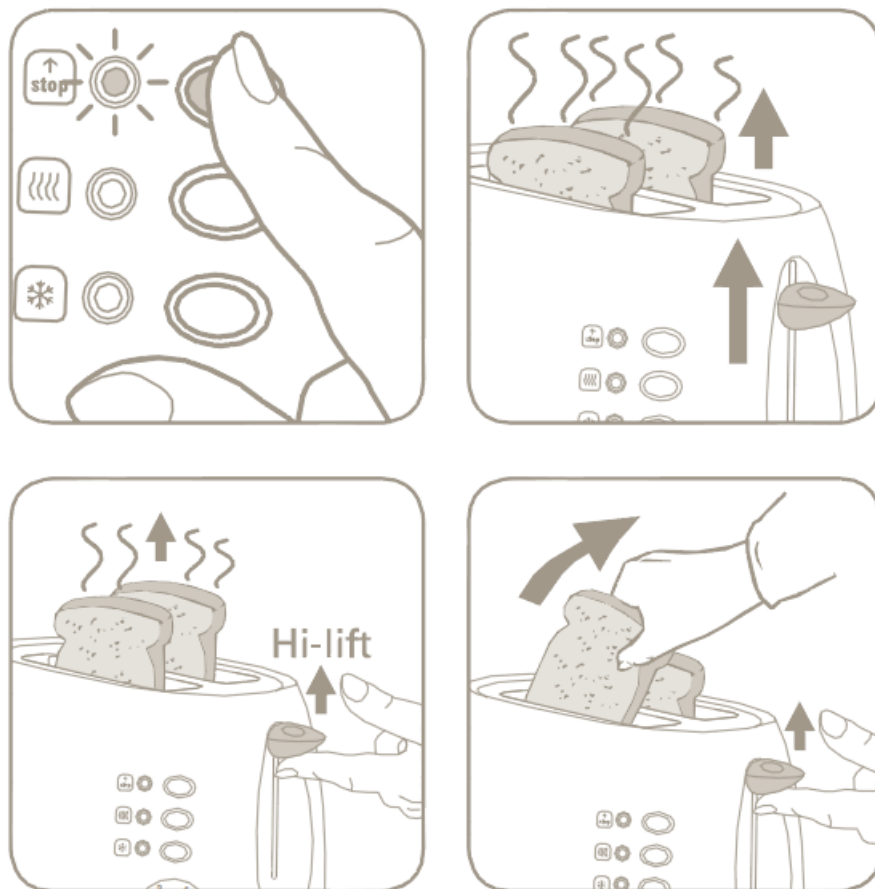


x3

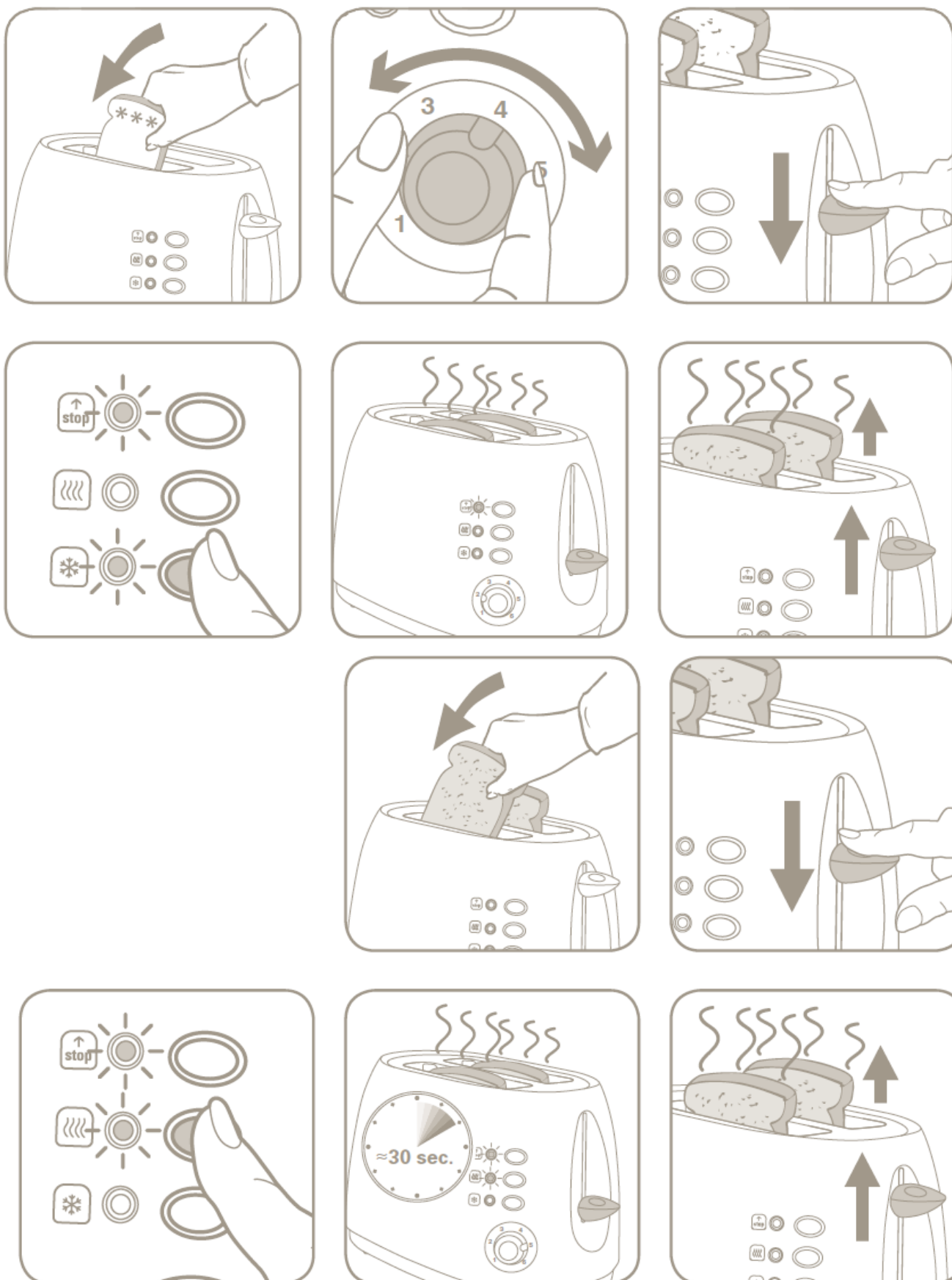
Toasting bread



- Stop/Eject
- Hi-lift

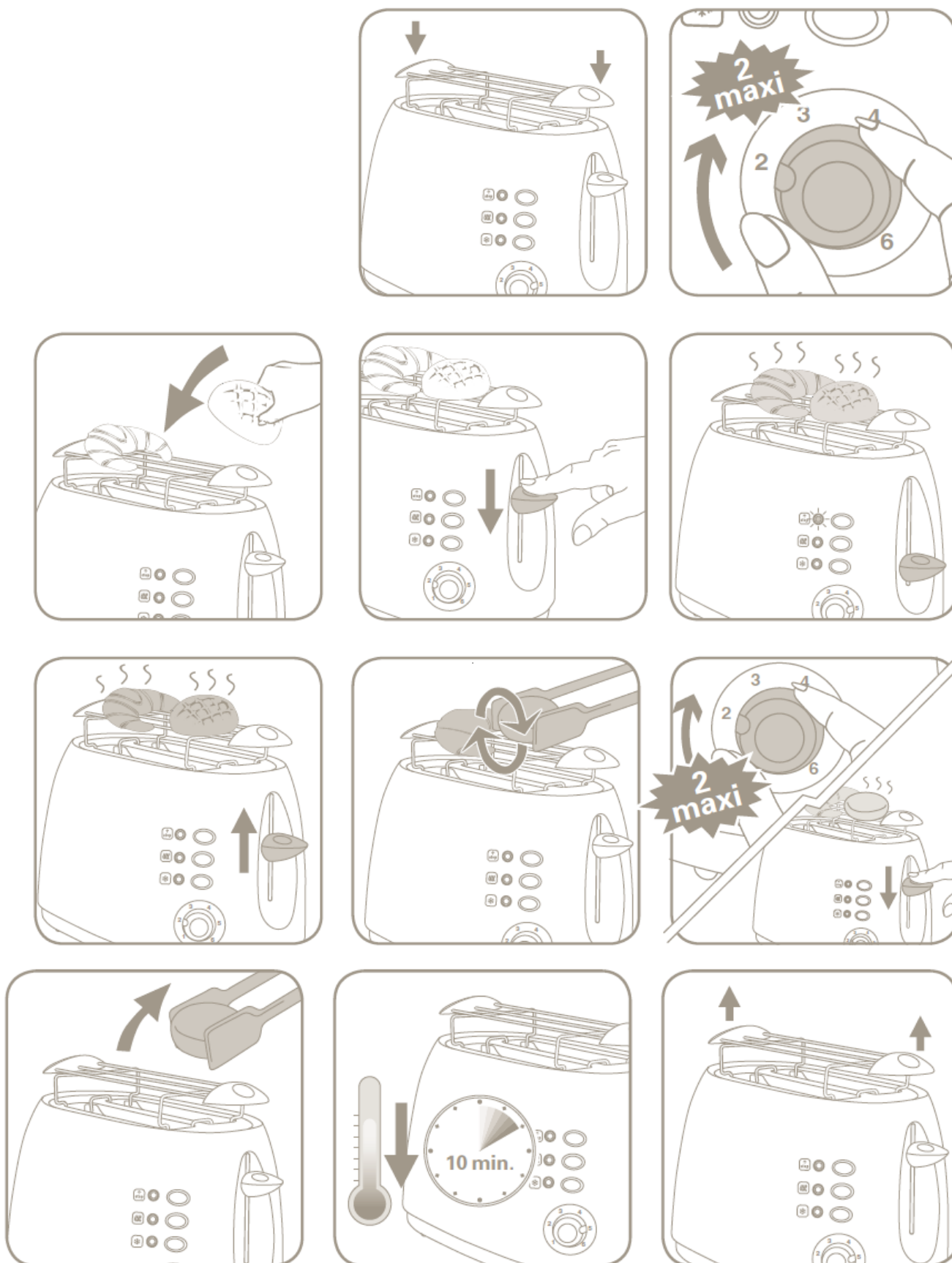


- Defrost
- Reheat



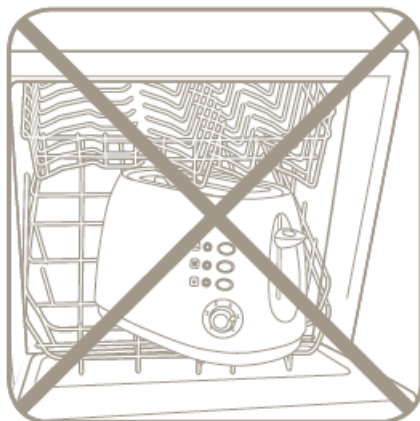
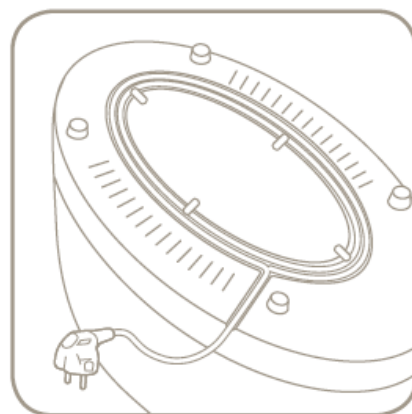
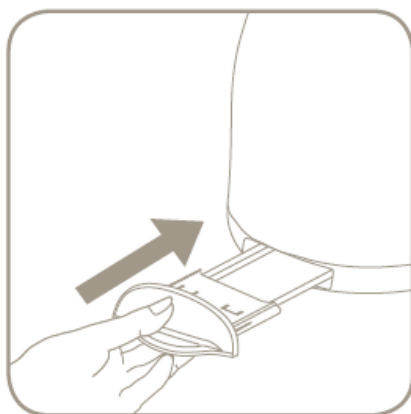
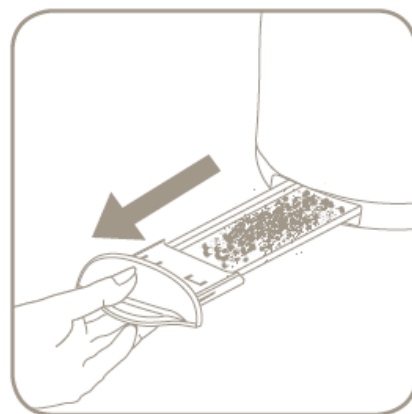
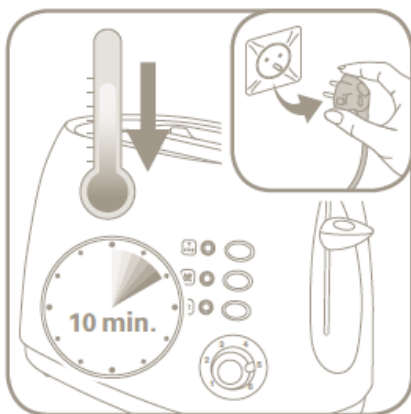
Removable croissant warmer

- Depending on model



Cleaning

- Do not



Safety instructions

Important safeguards

- This toaster complies with the safety rules and conditions in effect, and with the directives in force.

In accordance with the CSC notice of 2/12/04, this product features a mechanical design allowing the bread ejection mechanism to be detached from the power cut-off element.

- Check that the electricity supply voltage corresponds to the voltage indicated on the appliance (ac current only).
- Given the many standards in effect, if this toaster is used in a country other than the country where it was purchased, have it checked by an approved service centre (see enclosed after sales service information).
- Check that the electrical installation is sufficient to supply the power required by this appliance.
- Always plug the toaster into an earthed socket.
- Use extension leads which are in good condition, with an earthed connection, and with a minimum rating of 10A. To prevent any accidents

When using electrical appliances, basic safety precautions should always be followed:

Do

- Carefully read and follow all the instructions for use.
- This appliance is not intended for use by children or other persons without assistance or supervision if their physical, sensory or mental capabilities prevent them from using it safely.
- Children should be supervised to ensure that they do not play with the appliance.
- The toaster must always be used in the upright position, never on its side or tilted forwards or backwards.
- Use on a flat, stable heat-resistant work surface, away from any contact with water and never use underneath a built-in kitchen alcove.
- The toaster must be plugged in and switched on at the supply socket or the bread carriage will not stay down.
- Before each use make sure that the crumb tray is fitted correctly.

Regularly remove crumbs from the crumb tray.

- The bread control lever must be in the "Up" position before plugging in or unplugging the appliance.
- Unplug the appliance if it shows any working abnormalities.
- Unplug from the power socket when not in use during and before cleaning. Allow to cool down before cleaning or storing.
- To disconnect remove the plug from the wall socket (when the toasting cycle is finished).
- If the bread jams in the slots after toasting and the elements do not switch off, disconnect the plug immediately and wait for the appliance to cool before attempting to remove the bread.

Bread can burn; therefore do not use this appliance near any flammable materials such as curtains, under shelving or under wall cupboards.

Do not:

- Young children and severely disabled persons who are not familiar with these instructions should only use this appliance under the surveillance of a responsible adult.

Do not leave the appliance within the reach of children.

- Do not move or carry the appliance during use.
- Do not use outdoors. Avoid humid environments.

Do not let the toaster operate unattended, particularly when toasting for the first time or when settings have been changed.

- Do not use the appliance for any other use other than that for which it was designed.
- In order to avoid electric shock, do not immerse the cord, the plug or the toaster in water or any other liquid.
- Do not use metal utensils in the toasting mechanism or slots, this could cause short circuits or an electric shock (spoon, knife...).
- Do not let the cord hang over the edge of worktop or come in contact with hot surfaces. Keep out of reach of children.
- Do not store the cord or the plug between the slots in the appliance.
- Do not disconnect the appliance by pulling on the cord.
- Do not touch the metal parts or hot surfaces of the appliance when it is working. Use the handles.
- Do not use accessory attachments that are not recommended by the manufacturer as this may be dangerous.
- To protect yourself against an electrical shock do not immerse the cord, plugs, or appliance in water or other liquids.

Do not place any sugar-coated type of bread in the toaster or anything that may melt or drop into the toaster, do not toast small pieces of bread or croutons as this may cause damage to the toaster or a risk of fire. Do not try to toast very thick slices of bread that could become stuck in the toasting slots.

- Do not use this appliance if:
 - it has a damaged cord.
 - The appliance has been dropped and has visible damage or does not operate properly.

In any of these instances, the appliance must be sent to the approved after-sales service centre to avoid any risk of danger. Refer to the guarantee enclosed.
- Do not place on or near a gas burner, electric ring/hob, or near a heated oven.
- Do not cover this appliance while in use.

Bread can burn, therefore the appliance must not be used near or below curtains and other combustible materials such as curtains, drapes or wood (shelving, cupboards...) it should be attended to when in use.

- Do not put paper towels, cardboard or plastic in, on or under the toaster.

If flames were to arise from parts of the toaster, never attempt to extinguish them with water. Unplug the appliance and smother the flames with a damp cloth.

- Do not attempt to dislodge food once the toasting cycle is engaged, switch off and unplug first.
- Do not use this appliance as a source of heating or drying.
- Do not use the toaster for cooking, grilling or defrosting frozen food other than bread products.
- Do not use the appliance to toast bread and warm croissants (or similar products) at the same time.
- The metal frame can become very hot. Do not touch it! Use an oven glove or tongs.
- Do not use any abrasive cleaning agents (no soda-based scouring products, no scouring pads...), no metallic utensils, metal scouring pads, etc.
- For appliances with a metallic finish: Do not use any cleaning products designed for metals: use a damp soft cloth with a drop of washing-up liquid.
- This product has been designed for domestic use only. Any commercial use, inappropriate use or failure to comply with the instructions, the manufacturer accepts no responsibility and the guarantee will not apply.


Environment protection first!

Your appliance contains valuable materials which can be recovered or recycled. Leave it at a local civic waste point.

Save these instructions

If you have any product problems or queries, please contact our Customer Relations Team first for expert help and advice: HELPLINE: 0845 602 1454 – UK (01) 461 0390 – Ireland or consult our [website:www.rowenta.co.uk](http://www.rowenta.co.uk)

Documents / Resources

	<p>ROWENTA TL626030 Preface Toaster Maker Machine [pdf] User Guide TL626030, Preface Toaster Maker Machine</p>
---	--

References

- rowenta.co.uk
- [Rowenta USA | Garment Steamers, Steam Irons & Humidifiers](#)