

Rowenta
RR9675WH
Robot
Vacuum
Cleaner



Rowenta RR9675WH Aspirator Robot X Plorer User Guide

[Home](#) » [Rowenta](#) » Rowenta RR9675WH Aspirator Robot X Plorer User Guide 

Contents

- 1 [Rowenta RR9675WH Vacuum Cleaner Robot X Plorer](#)
- 2 [Product Information](#)
- 3 [Product Usage Instructions](#)
- 4 [FAQs](#)
- 5 [What's in the box](#)
- 6 [Product Overview](#)
- 7 [Before cleaning](#)
- 8 [Install the robot](#)
- 9 [Connect the robot with the free app](#)
- 10 [Use the main app features](#)
- 11 [Use the robot without the app](#)
- 12 [The difference between the two tanks](#)
- 13 [Use the robot without the mopping function](#)
- 14 [Use the robot with the mopping function](#)
- 15 [Information about 3D Vision](#)
- 16 [Maintain the robot and its accessories](#)
- 17 [Component replacement frequency](#)
- 18 [Store the robot when you don't use it](#)
- 19 [Do's and don'ts](#)
- 20 [Common issues and solutions](#)
- 21 [Documents / Resources](#)
 - 21.1 [References](#)
- 22 [Related Posts](#)

Rowenta

Rowenta RR9675WH Vacuum Cleaner Robot X Plorer



Product Information

The X-Plorer Serie 240 AI is a robotic vacuum cleaner with a mopping function. It comes with various accessories and features designed to make cleaning your home easier and more efficient.

Specifications:

- **Model:** X-Plorer Serie 240 AI
- **Language:** English
- **Pages:** 003, 031, 059, 087, 115, 143, 171, 199, 227

Product Overview:

The product includes dust dust-collecting channel cover, a home button, a power/start/pause button, a reset button, a dust box, a cleaning tool, a dust box handle, washable mops for different uses, a docking station, charging contacts, and more.

Product Usage Instructions

1. Install the Robot:

1. Flash the QR code above to watch a video on how to install and connect the robot.
2. Turn the docking station upside down, remove the bottom cover, connect the adapter, and put the cover back on.
3. Remove all protective films from the station and robot.
4. Install the side brush by gently clipping it until you hear a clicking sound.

2. Connect the Robot with the App:

1. Do not lift the robot during the first cleaning to allow map creation.
2. Place barriers around carpets with fringes to prevent the robot from getting stuck.
3. Close outdoor access points less than 2 cm high to keep the robot inside.
4. Use the QR code to access detailed pairing instructions in a PDF document.

3. Use the Main App Features:

Scan the QR code to learn how to use the main features of the application via video tutorial.

4. Use the Robot without the App:

1. The robot requires either the vacuum-only module for vacuuming or the water tank for vacuuming and mopping.

- Both tanks have charging contacts for docking and charging; ensure a tank is installed for charging to work.

FAQs

What's included in the box?

The box includes the X-Plorer Serie 240 AI robotic vacuum cleaner, various accessories like mops and brushes, docking stations, and charging contacts.

How do I install the robot?

To install the robot, follow the detailed instructions provided in the user manual or watch the installation video by flashing the QR-Code.

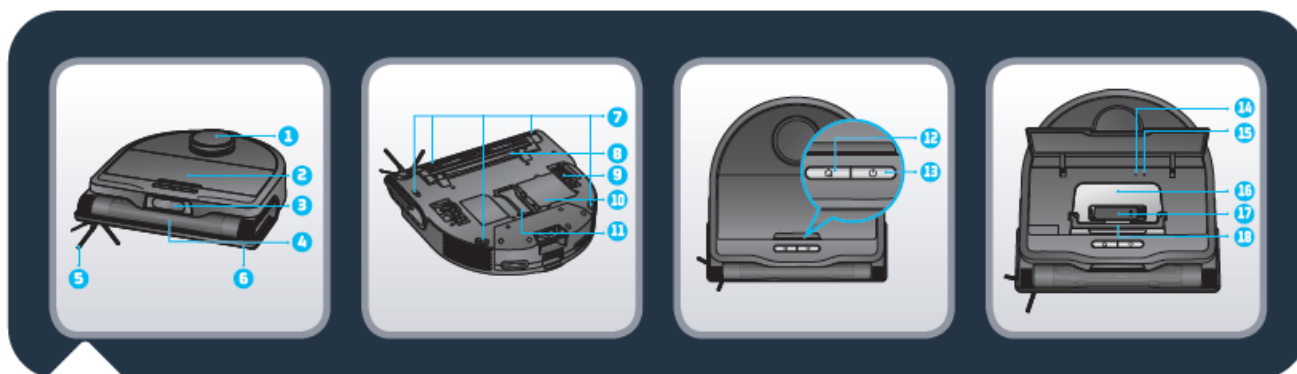
How do I switch between vacuuming and mopping modes?

To switch between modes, either install the vacuum-only module for vacuuming or replace it with the water tank for vacuuming and mopping functions.

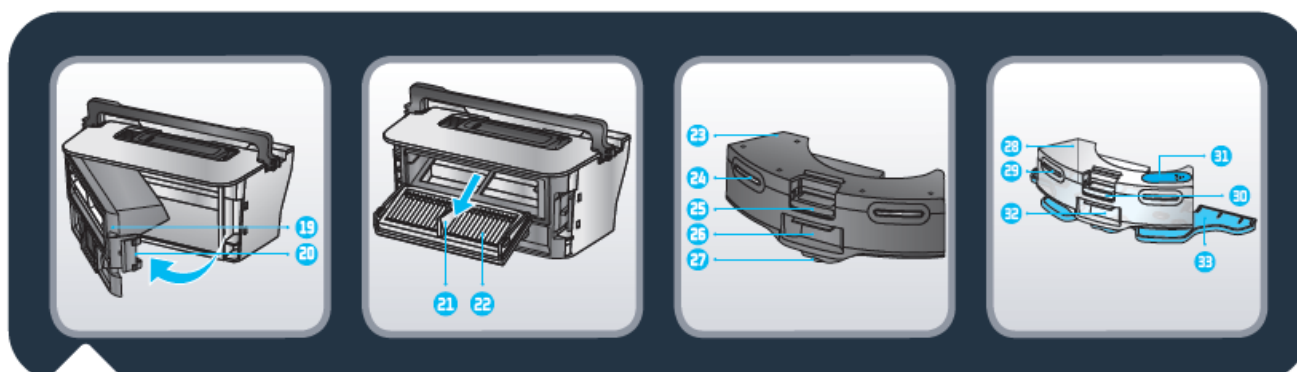
What's in the box



Product Overview



1. LiDAR
2. Flip cover
3. « 3D Vision » cameras
4. Main brush
5. Side brush
6. Bumper
7. Anti-drop sensors
8. Main brush cover
9. Wheel
10. Battery
11. Dust-collecting channel cover
12. Home button
 - Press to return to the station
13. Power/Start/Pause button
 - Press and hold to turn on or off
 - Press to start or pause cleaning
14. WiFi indicator light
 - **Off:** WiFi disabled
 - **Blinking slowly:** waiting for connection
 - **Steady:** WiFi-connected
15. Reset button
16. Dust box
17. Cleaning tool
18. Dust box handle



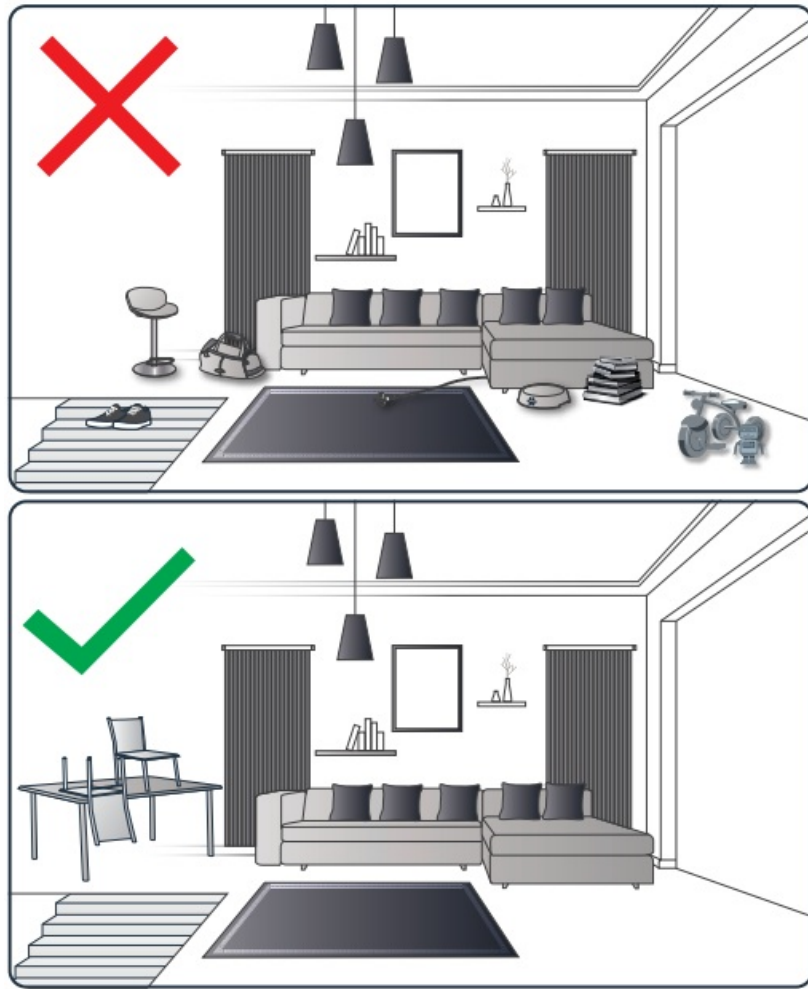
- 19. Dust box opening
- 20. Dust box latch
- 21. Filter Handle
- 22. Filter
- 23. « Vacuum only » module (keep it installed in the robot when you don't use the mopping function)
- 24. Charging contacts
- 25. « Vacuum only » module latch
- 26. Dust trap door
- 27. Wheel
- 28. Vibrating water tank (to use the mopping function, unclip the “vacuum only” module and replace it with the water tank)
- 29. Charging contacts
- 30. Water tank latch
- 31. Stopper
- 32. Dust trap door
- 33. Vibrating mop bracket

Product Overview



- 34. Washable grey mop for standard use
- 35. Washable blue scrubbing mop for hard stains
- 36. Washable green microfiber mop to capture fine dust (to use without water)
- 37. Docking station
- 38. Charging contacts

Before cleaning



Although the robot can autonomously avoid some obstacles, please read the following tips to improve cleaning efficiency. Tidy up cables, cords, and small and loose items. Remove any unstable, fragile, precious or dangerous items from the ground. Make sure each room door is open. Your robot may encounter some difficulties on dark floors and carpets: with fringes, too thick, with long piles, or too light (ex: bathroom carpet). For optimum anti-drop sensor efficiency, remove any item (ex: shoe) from the stairs. When using the robot in a raised area, place a physical barrier at the edge of a drop to prevent accidental falls. Do not stand in narrow spaces, such as hallways so the robot is not blocked. Make sure areas to be cleaned are well illuminated so “3D Vision” works properly.

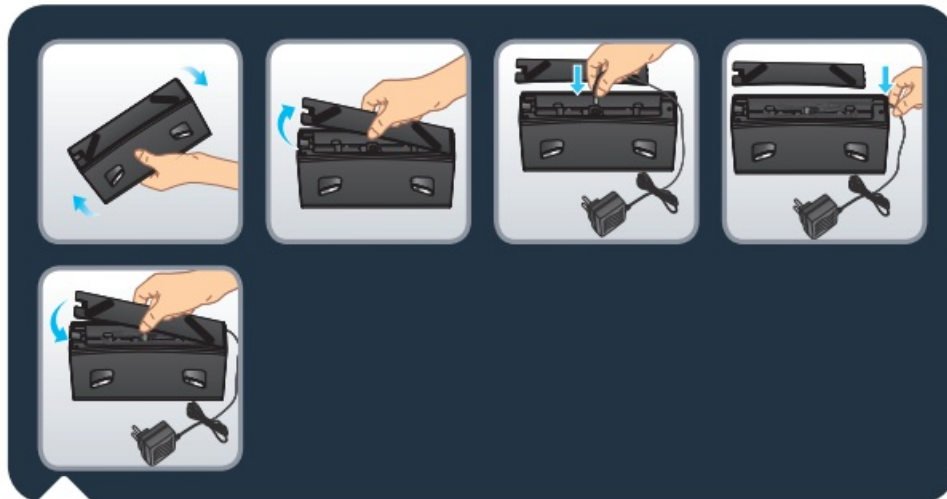
Install the robot



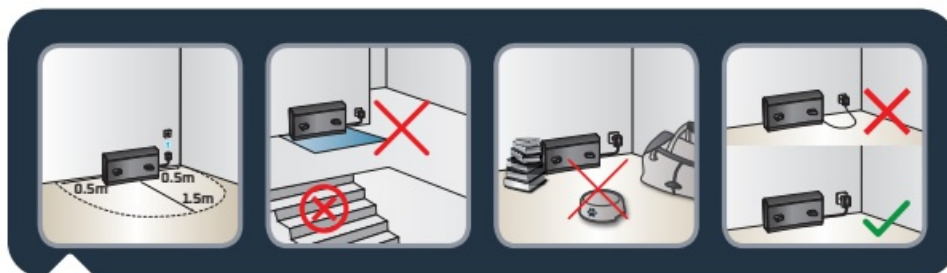
Flash the QR-Code above to learn how to install and connect the robot in the video. Read the following instructions for more detailed information.



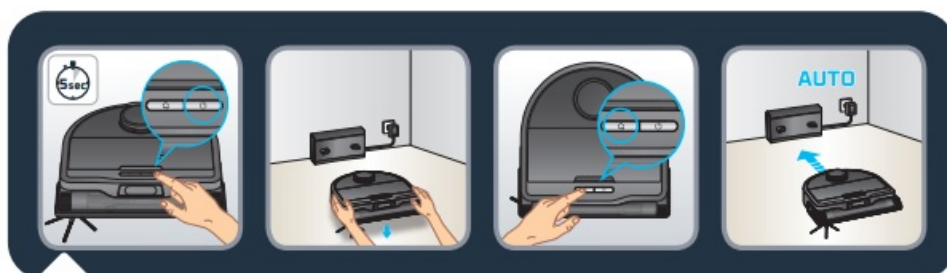
Remove all protections (protective films) on the station and the robot. Reverse the robot, and install the side brush by gently clipping it. The side brush is correctly installed when you hear a clicking sound.



Turn the station upside down. Remove the bottom cover of the docking station and connect the adapter. Pay attention to arranging the adapter connection wire to avoid being wound during the sweep. Put the bottom cover back.



Install the docking station on a hard and flat floor. Avoid parquet, wooden floors, and carpet. Place the station in a clear space against a wall, with no stairs in front of the station. Keep at least 0.5 m of clearance on either side and 1.5 m in front. Make sure the chosen location is close to the Wi-Fi box or has good Wi-Fi signal strength. Keep the area around the station clear from any object, reflective surface, mirror, table or chair. Keep the station away from direct sunlight. Plug the power cable. Make sure the power cable remains against the wall.



- Turn the robot on by pressing and holding the START button until the robot lights turn on (~5 seconds). Place the robot in a backward position from 20 to 50 cm in front of the station. Press the HOME button, the robot will automatically dock to the station. (Do not manually place the robot against the station.) Wait 3-4 hours for the robot to be fully charged. For the first-time cleaning, please ensure that the robot is fully charged.
- For the first cleaning in a new environment, the robot will create the home map. To improve the accuracy of the map, don't use the vibrating water tank, keep the « vacuum only » module installed in the robot.
- Do not lift the robot during the first cleaning, it prevents the map creation.

- If you have carpets with fringes, please place barriers around carpets to prevent the robot from getting stuck in the fringes, it prevents the map creation.
- If you have an outdoor area (garden, balcony, patio, etc.) accessible with a threshold less than 2 cm high or without a threshold (for example with a French window, a patio door, a bay window, etc.), please close this access so the robot doesn't go outside your home.

Connect the robot with the free app



Flash the QR-Code above to learn how to install and connect the robot in the video. You can also find the detailed pairing instructions step by step in a PDF document by flashing the QR code below.



Use the main app features



Flash the QR code above to learn how to use the main features of the application in the video.

Use the robot without the app



- Press the button « Start » to start automatic cleaning. The robot will scan the area. It will automatically split the room into small zones, first cleans inside the zone in a zig zag, and then cleans zone edges. The robot will

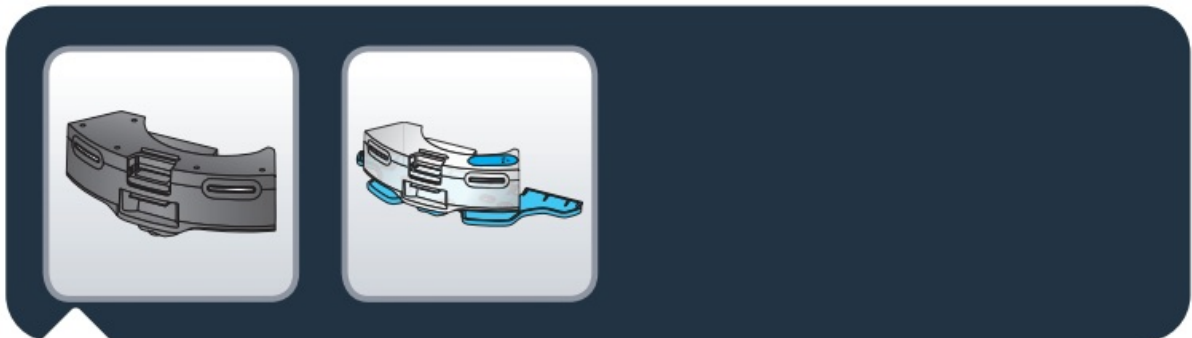
clean all accessible area, zone by zone.

- Press the button « Start » at any time to pause cleaning and press it again to resume cleaning. If the robot is on standby, press the button « Start » once to wake up the robot and a second time to start cleaning.
- If you start the robot from the station, it will automatically return to its station at the end of the cleaning session or if the battery level is too low. If the battery runs low during the cleaning session, the robot will automatically return to its station to charge. After charging, the robot will resume cleaning where it left off.
- If the robot is not on its station when it starts cleaning, it will automatically return to its starting point at the end of the cleaning session or if the battery level is too low.
- If the robot doesn't start when you press the button « Start », the battery level may be too low, please charge the robot.
- At the end of the cleaning session, the robot will automatically return to the station. But if you want to manually end the cleaning session, press the « Home » button once to stop the robot at any time and press it again to send the robot back to the station. If the robot is on standby, press the « Home » button once to wake up the robot and a second time to send it back to the station. If the robot fails to find the station, manually place the robot in front of the station and press the « Home » button.

Note:

At the start of a cleaning session, the robot goes few meters away from the station and comes back (relocation sequence). During this sequence, the robot reduces the motor power and stops water tank from vibrating. This behavior is normal.

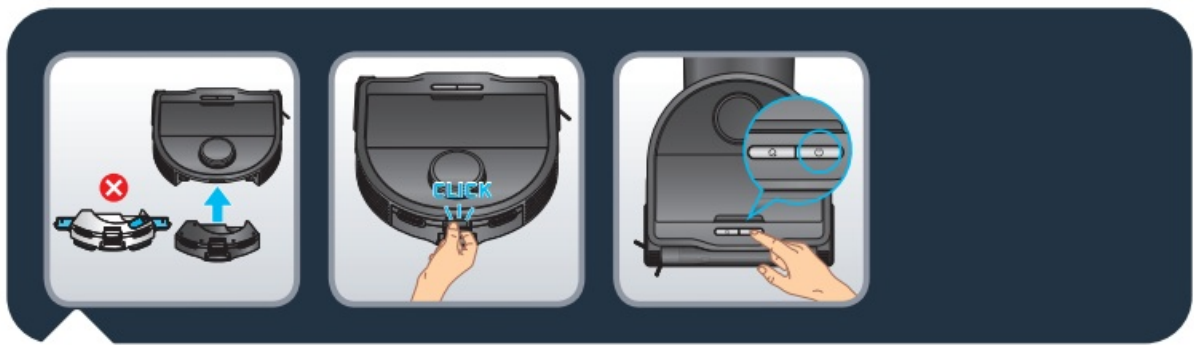
The difference between the two tanks



- To work properly, the robot always needs one of the two tanks installed:
 - Install the “vacuum only” module to use the robot in “vacuum only” mode (without mopping function) ;
 - Or install the water tank to use the robot in “vacuum & mop” mode. Both tanks are equipped with charging contacts to allow the robot to dock to its station and to charge its battery.
- Warning: the robot will not charge if no tank is installed.

Use the robot without the mopping function

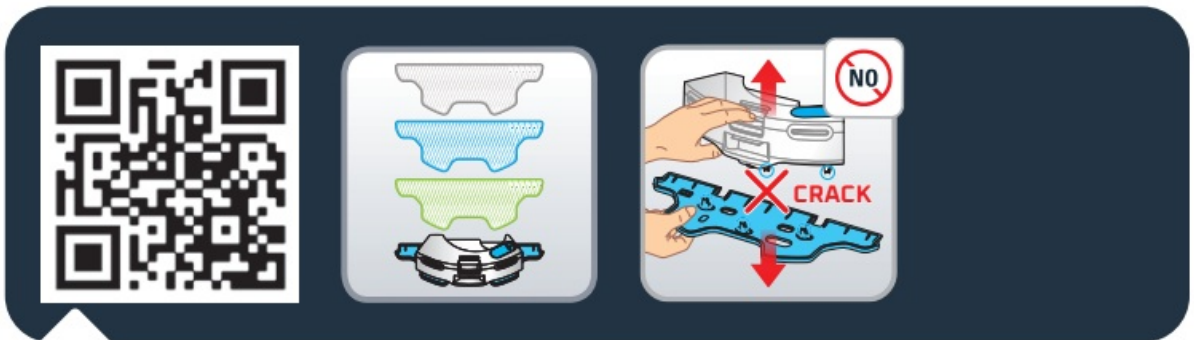
Use the robot without the mopping function («vacuum only» mode)



To use the robot without the mopping function ("vacuum only" mode), install the "vacuum only" module at the back of the robot. The module is correctly installed when you hear a « click » sound. Press the « Start » button or use the app to start cleaning. Keep the "vacuum only" module installed in the robot when you don't use the mopping function. The "vacuum only" module is equipped with charging contacts to allow the robot to dock to the station and to charge its battery.

Use the robot with the mopping function

Use the robot with the mopping function («vacuum & mop» mode)



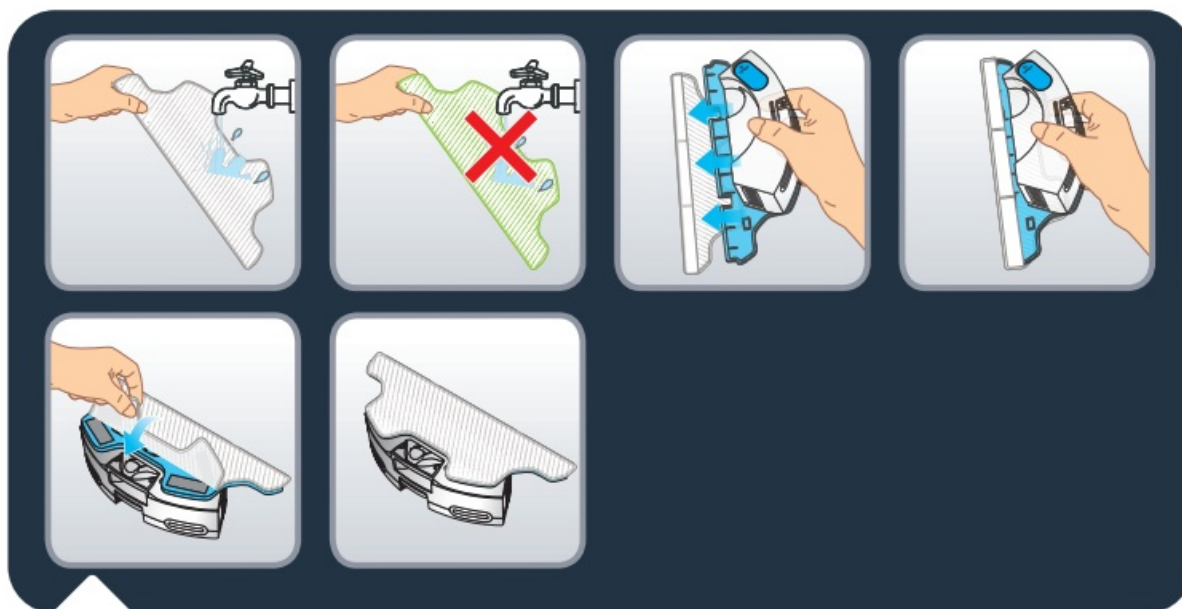
Flash the QR code above to learn how to use the mopping function in the video. Read the following instructions for more detailed information.

The different types of mops (depending on the model):

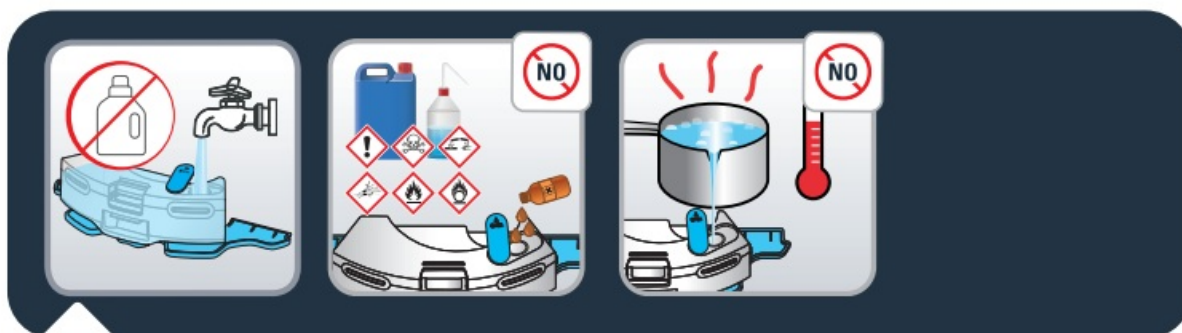
- Washable grey mop for standard use
- Washable blue scrubbing mop for hard stains
- Washable green microfiber mop to capture fine dust (to use without water)

Warning:

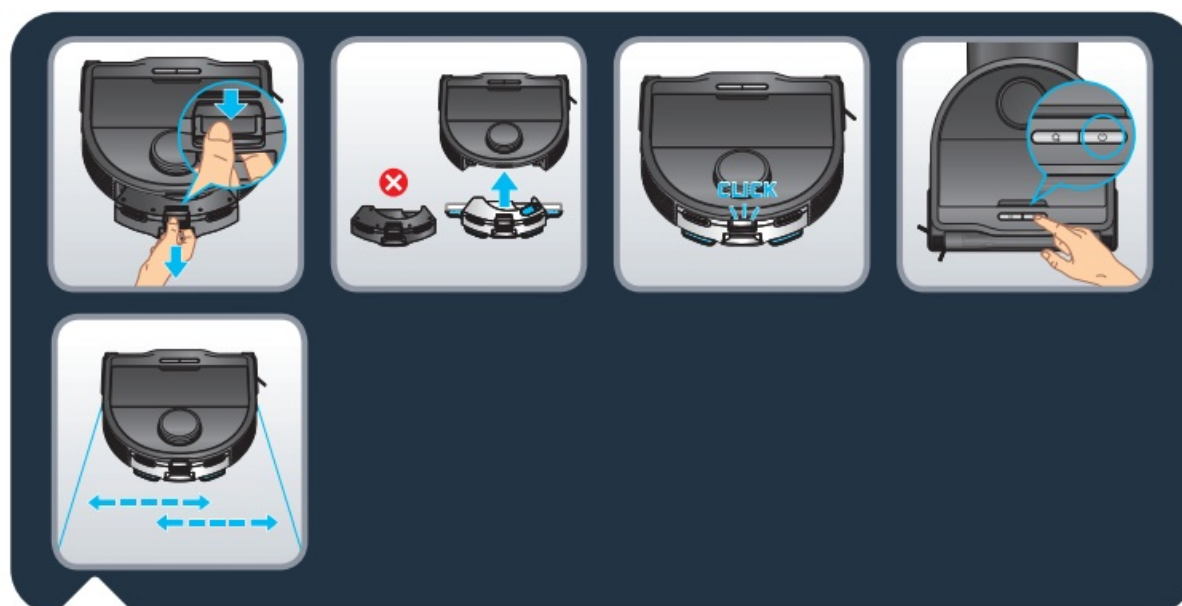
Do not try to disassemble the water tank and the vibrating mop bracket. The vibrating mop bracket is not removable from the water tank.



Moisten the mop cloth with water before use. If you use the green mop, don't moisten it. Attach the mop to the vibrating mop bracket.



- Open the stopper of the water tank and fill it with clean water until the water tank is full.
- Do not use hot water. Warning: Do not add cleaning agents in the water tank.
- This may clog the pipes and make the water tank not functioning anymore.



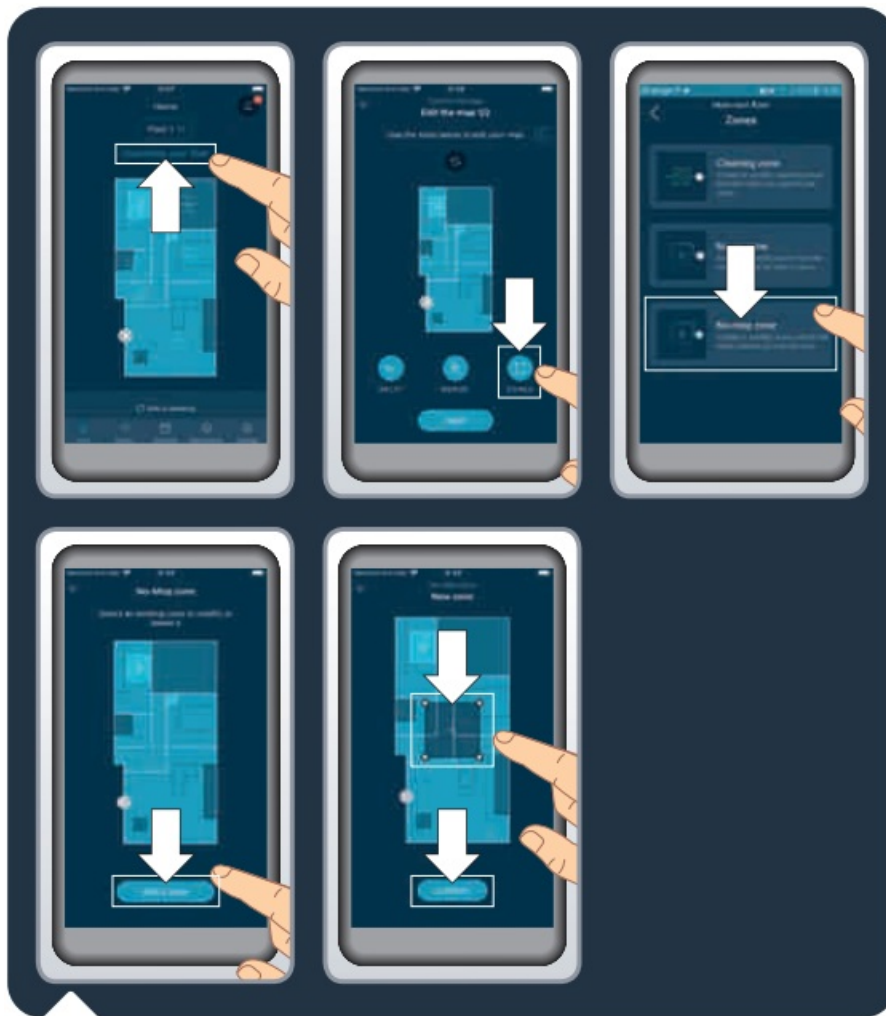
- Unclip the “vacuum only” module by pressing the latch and pull to remove the “vacuum only” module. Take the

water tank and clip it at the back of the robot. The water tank is correctly installed when you hear a « click » sound. Press the « Start » button or use the app to start cleaning. The vibrating mop bracket will be automatically activated with a left-to-right motion.

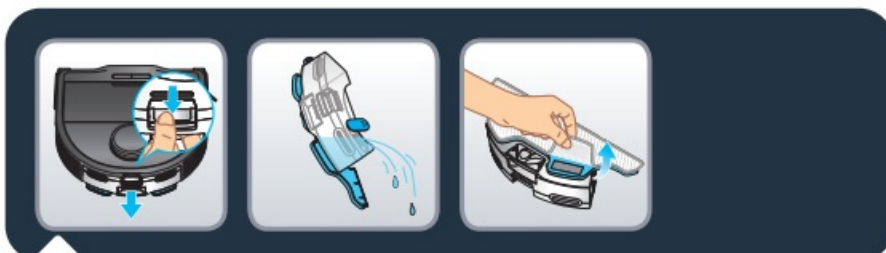
- **Note:** Keep the “vacuum only” module installed in the robot when you don’t use the mopping function.
- The robot will be more agile at crossing thresholds, at moving on carpets.

Warning:

Do not use the mopping function on carpets. You can use the “vacuum only” module or if you want to use the mopping function to avoid carpets, you can set “no mop zones” in the app.



To preserve fragile floors or carpets, you can set « no mop zones » in the app. On the homepage, click on « Customize your floor », then on « Zones ». Select « No mop zones » and add a zone on the map that you can customize (size, location). To save the no mop zone, click on « Confirm ». You can create as many « no mop zones » as necessary. When the water tank is installed, the robot is not allowed to clean in these zones.



- At the end of the cleaning session, unclip the water tank by pressing the latch and pull to remove the water

tank. Empty the water tank of the remaining water. Remove the dirty mop cloth.

- Install the « vacuum only » module for charging.



Wash the mop cloth under water or in the laundry machine. Let it dry for 24 hours. Please replace the mop cloth after 100 washes. You can buy a kit of new mops on www.rowenta.com.

Information about 3D Vision



Flash the QR code above to learn more about the artificial intelligence functions.

The robot can detect small obstacles from 3 cm (height) x 3 cm (length) x 3 cm (width) on its cleaning path and avoid them to reduce the risk of getting stuck. The robot can recognize certain objects. During the cleaning session, each time the robot recognizes and avoids an object, an icon symbolizing the object will be displayed on the app. If the robot detects an item but doesn't recognize it, a generic icon will be displayed on the app. Black objects, transparent objects, and reflective objects can not be detected.

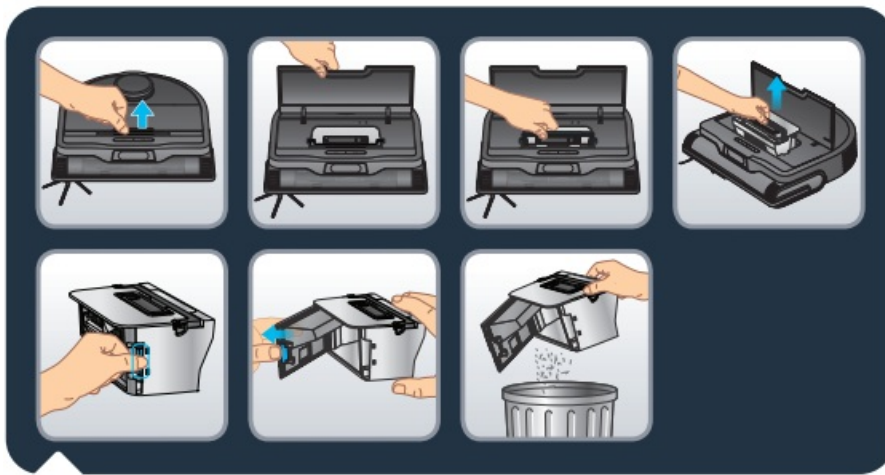
Maintain the robot and its accessories



- Flash the QR-Code above to know how to use the maintain the robot to keep its performance.
- Always switch off the robot by pressing and holding the START button for 5 seconds, and unplug the station before any manipulation.

Once a week, clean the sensors

- With a clean, soft, and dry cloth, wipe the robot sensors (in front, top, back, and bottom of the robot) and the sensors and charging contacts of the station.
- Wipe the two buttons on top of the robot.



After each use, clean the dust box

- Open the flip cover, take the dust box handle, and lift the dust box by the handle to take it out of the robot. Push on the latch on the side of the dust box to open. Empty the dirt into the bin. Close the dust box.
- **Note:** The flip cover may not open or close properly if there is too much dust in the hinges. Please clean the hinges with a clean, soft, and dry cloth to remove dust.



Once a week, clean the filter

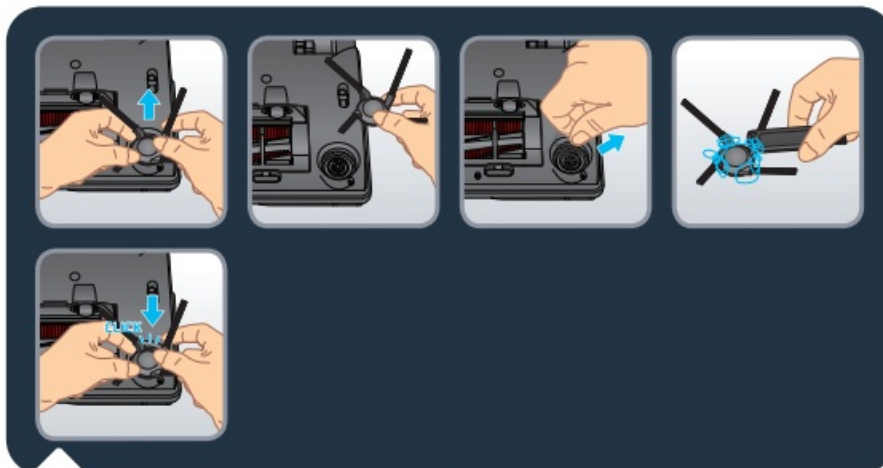
- Always switch off the robot by pressing and holding the START button for 5 seconds, and unplug the station before any manipulation.
- Take the cleaning tool located on top of the dust box. Remove the filter from the dust box by grabbing the center part of the filter holder. Use the brush part of the cleaning to clean the filter. You can also wash the filter

and the dust box underwater. Let them out to dry for 24 hours. Put the filter back to its original place. Replace the cleaning tool on top of the dust box. Reinstall the dust box in the robot by grabbing the dust box handle. **Warning:** do not reinstall the dust box in the robot without grabbing the dust box handle, it will not be correctly installed and the robot will not start. **Note:** Never use the robot without the pleated filter. It would damage the robot.



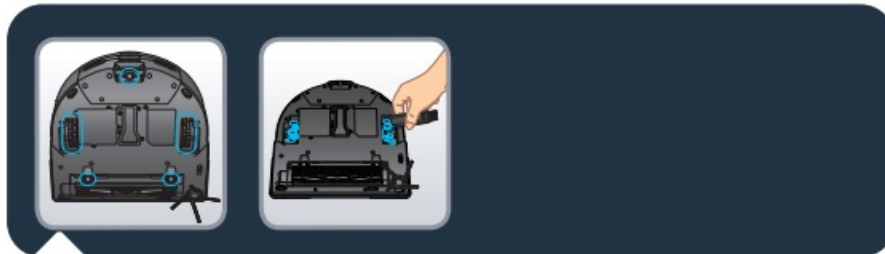
Once a week, clean the main brush

- Always switch off the robot by pressing and holding the START button for 5 seconds, and unplug the station before any manipulation.
- Turn the robot upside down. Press the latches of the brush cover and pull to remove it. Take out the brush. Pull the brush heads on the left and right sides of the brush to remove them and get rid of tangled hair. Take the cleaning tool and use the blade part to cut off the tangled hair. Replace the brush heads before re-installing the brush in the robot. Re-install the brush cover. The cover is correctly installed when you hear a click sound.



Once a week, clean the side brush

- Always switch off the robot by pressing and holding the START button for 5 seconds, and unplug the station before any manipulation.
- Turn the robot upside down. Take the side brush with two hands by the plastic parts and pull to unclip it. Do not pull by the bristles of the side brush. Remove the tangled hair. Re-install the side by gently clipping it. The side brush is correctly installed when you hear a clicking sound.
- **Note:** The side brush can be difficult to remove, if you can't unclip it, try pulling from a different angle.
- To remove the tangled hair, you can use the blade of the cleaning tool on top of the dust box.



Once a month, clean the wheels

- Always switch off the robot by pressing and holding the START button for 5 seconds, and unplug the station before any manipulation.
- The wheels may be entangled by hair or dirt. Turn the robot upside down. Clean the wheels by removing the tangled hair.

Component replacement frequency

Components and accessories can be bought at www.rowenta.com

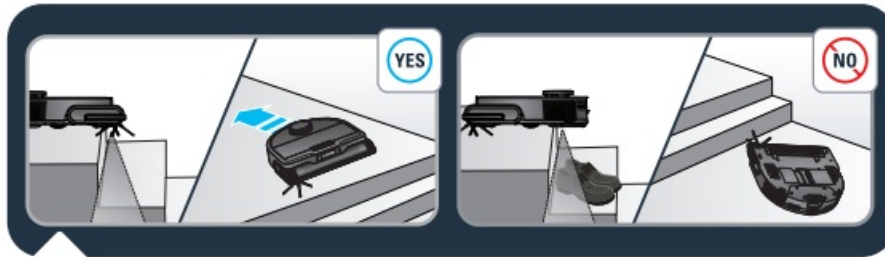
Component	Cleaning the component	Replacing the component
Dust box	After each use	Not applicable
Water tank	After each use	Not applicable
Mops	After each use	After 100 washes
Filter	Once a week	Twice a year
Main brush	Once a week	If required
Side brush	Once a week	Twice a year
Sensors	Once a week	Not applicable
Station	Once a week	Not applicable
Wheels	Once a month	Not applicable

Store the robot when you don't use it

- In order to extend the battery lifespan, always keep the robot charging at its station.

- When not using the robot for a long time, please fully charge the battery, and switch off the robot by pressing and holding the START button for 5 seconds. Store the robot in a cool dry place.

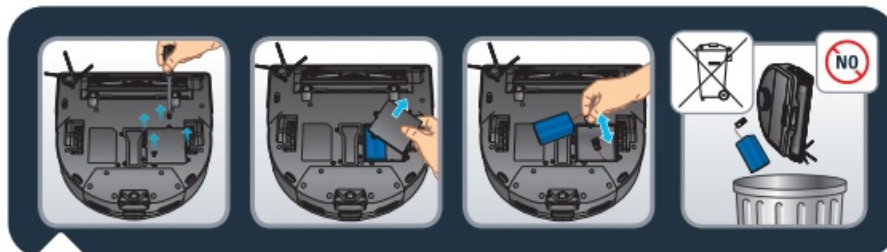
Do's and don'ts



The robot has anti-drop sensors to detect stairs. The robot will change direction when detecting them. For optimum anti-drop sensor efficiency, remove any item (ex: shoe) from the stairs. When using the robot in a raised area, place a physical barrier at the edge of a drop to prevent accidental falls.



- Do not shake the robot. Do not try to disassemble the vibrating mop bracket from the water tank. Do not put water or any wet cloth on the robot. Do not charge the robot when the ground is flooded. Do not submerge the robot in water. Do not use the robot on wet surfaces or surfaces with standing water.
- Do not use the product if the cord or charger is damaged.



- Before disposing of the device, remove the battery and dispose of it by local laws and local arrangements. If you have any questions, please contact your product dealer who can tell you what to do.



- Do not leave children unattended, and do not allow children to play with the robot.
- Do not use the robot outside the home.
- Do not use the robot in an overheated environment.
- Do not use the robot when the home temperature is below 0°C (32°F) and above 40°C (104°F).
- Do not spread cleaning agents on the floor before using the robot.
- Do not use cleaning agents, aerosol cleaners, or cleaning spray to clean the robot and the filter.
- Do not throw the robot in the fire.
- Do not use the robot to clean broken glass.
- Do not try to use the robot without the « vacuum only » module or the water tank, do not remove the « vacuum only » module or the water tank when the robot is running.
- Do not walk or climb on the robot, do not move the robot with the foot.
- Do not allow children or pets to ride on the robot.
- Do not put any item on the robot.
- Do not use the robot without the filter, it would damage the robot.

Common issues and solutions

FAULT	SOLUTION
-------	----------

Cannot start the robot	<ul style="list-style-type: none"> • Make sure the robot is connected to the power supply. • Make sure the battery is fully charged. • Make sure the robot is ON. Press and hold the START button for 5 seconds until the robot lights are on. • Do not try to use the robot without the « vacuum only » module or the water tank. • Check whether the dust box and water tank are properly installed.
The robot suddenly stops working	<ul style="list-style-type: none"> • Check whether the robot is stuck or blocked by obstacles. • Check whether the battery is too low. • If the problem persists, please switch OFF the robot by pressing and holding the START button for 5 seconds. Wait for 30 seconds, and switch ON by pressing the START button for 5 seconds to restart it. • The appliance may be overheating: <ul style="list-style-type: none"> ◦ Stop the appliance and leave it cool for at least 1 hour. ◦ If it overheats on repeated occasions, contact the Approved Services Center.
Cannot charge the robot	<ul style="list-style-type: none"> • Make sure the station is properly connected to the power. • Make sure the robot is ON. Press and hold the START button for 5 seconds until the robot lights are on. • Check whether the indicator on the robot is flashing during charging. • Wipe dust off charging contacts with dry cloth. • Make sure the robot and the station are connected through the charging contacts. • Do not try to use the robot without the « vacuum only » module or the water tank. • Make sure the station light is white when it's connected to power and robot is not on the station.
The charger is getting hot	<ul style="list-style-type: none"> • This is perfectly normal. The robot can remain permanently connected to the station without any risk.

The robot cannot return to the station	<ul style="list-style-type: none"> • Clear the station of objects within 0.5 m on the left and right sides and within 1.5 m ahead. • Make sure that the robot starts cleaning from the station without abnormal movement. • When the robot is near the station, it can return faster. But if the station is located far away, the robot will need more time to return. Please wait for its return. • Clean the charging contacts with a dry cloth. • Make sure the station light is white when it's connected to power and the robot is not on the station.
The cleaning schedule is not executed	<ul style="list-style-type: none"> • Make sure the robot has been powered on. Press and hold the START button for 5 seconds until the robot lights are on. • Make sure the cleaning schedule has been set correctly in the application at the desired time, and the cleaning schedule is saved. • Check whether the battery level is too low to start cleaning. • The robot will not start any scheduled cleaning when a task is being performed. • Check whether the dust box and water tank are properly installed.
The suction is whistling or running is very loud during cleaning	<ul style="list-style-type: none"> • Check the suction inlet for any obstruction. • Empty the dustbin. • Clean the filter. • Check whether the filter is wet due to water or other liquids on the floor. Let the filter dry naturally thoroughly before use. • Check whether the dust box and water tank are properly installed. • Check whether the main brush or side brush is blocked by any foreign item, remove the main brush or side brush and clean it.
The central brush does not rotate	<ul style="list-style-type: none"> • Check whether the main brush is blocked by any foreign item, remove the main brush, and clean it. • Check whether the central brush and the brush cover are correctly installed.
Abnormal action or sweep route of the robot	<ul style="list-style-type: none"> • Carefully clean the sensors with a dry cloth. • Switch OFF the robot by pressing and holding the START button for 5 seconds, wait for 30 seconds, and switch on by pressing and holding the START button for 5 seconds to restart the robot.


No water was released during mopping	<ul style="list-style-type: none"> • Make sure there is enough water in the water tank. • Check whether the water tank is correctly installed. • Check whether the humidity level is set at the desired level in the application. • Check whether the water outlet is blocked.
The robot cannot connect to your Wi-Fi network	<ul style="list-style-type: none"> • Ensure that your Wi-Fi router supports 2.4GHz and 802.11 b/g/n bands as this equipment does not support 5GHz bands. • Check if the automatic reconnection to your domestic WiFi network is correct • Activate the mobile data of your smartphone • Don't use a VPN (Virtual Private Network) • Retry the process and check that you have selected the correct WiFi network • Retry the process and make sure you have entered the correct WiFi password • Keep your phone close to the robot and the station until the end of the pairing process • After several attempts, unplug and replug the product • Reset the robot, open the flip cover, press and hold the « Home » button for 15 seconds • Press and hold for 5 seconds the « Home » and « Start » buttons until the two buttons lights are blinking • Restart your smartphone • In case a warning window appears for an internet connection, please maintain the connection with the robot • If the failure persists, contact our support team (telephone number depending on your country of residence, find it on the assistance leaflet in the packaging). • Make sure the station light indicator is white when it's connected to power and when the robot is not on the station.
The map is lost	<ul style="list-style-type: none"> • The map may be lost if the robot has been manually moved to another location during cleaning or if the home environment has been changed (moved furniture). Please restart mapping by launching in the app a new exploration or a new cleaning session from the station.

The robot returns to the station before it has finished cleaning	<ul style="list-style-type: none"> The battery level may be too low to finish cleaning, the robot will return to the station to charge. When its battery is full, the robot will resume cleaning where it has left to finish cleaning. The robot may be unable to reach certain areas blocked by furniture or barriers, tidy up this area to make them accessible. Verify the no-go zones and no-mop zones set in the application. Add, modify or delete zones according to your needs.
The robot gets stuck	<ul style="list-style-type: none"> The robot may be tangled with something, manually remove the blocked item and restart the cleaning session by pressing the START button. The robot may be stuck under furniture with an entrance of similar height, please set a physical barrier or a no-go zone in the app. Rotate and press the wheels to check whether there is any foreign object wrapped or stuck, remove it.
The robot fails to recognize objects	<ul style="list-style-type: none"> Make sure the cleaning area is well-illuminated. Clean the lenses and sensors with a clean soft dry cloth. Make sure the lenses and sensors are not blocked.

For more information:

www.rowenta.com.

Documents / Resources

 <p>Rowenta Serie 240 AI</p>	<p>Rowenta RR9675WH Aspirator Robot X Plorer [pdf] User Guide</p> <p>Serie 240 RR9675WH, RR9675WH, RR9675WH Aspirator Robot X Plorer, RR9675WH, Aspirator Robot X Plorer, Robot X Plorer</p>
---	--

References

- [User Manual](#)

[Manuals+](#), [Privacy Policy](#)

This website is an independent publication and is neither affiliated with nor endorsed by any of the trademark owners. The "Bluetooth®" word mark and logos are registered trademarks owned by Bluetooth SIG, Inc. The "Wi-Fi®" word mark and logos are registered trademarks owned by the Wi-Fi Alliance. Any use of these marks on this website does not imply any affiliation with or endorsement.