



Rowenta Express Style Instruction Manual

[Home](#) » [Rowenta](#) » Rowenta Express Style Instruction Manual 

Contents

- 1 Rowenta Express Style
- 2 Product Information
- 3 Product Usage Instructions
- 4 SAFETY
- 5 GUARANTEE
- 6 ENVIRONMENT PROTECTION FIRST!
- 7 FUNCTION
- 8 Documents / Resources
 - 8.1 References
- 9 Related Posts

Rowenta

Rowenta Express Style



Product Information

The product is designed for household use only and should not be used for professional purposes. The appliance can be used by persons aged 8 years and above who have the required knowledge and experience in handling such equipment. Children must not play with the appliance, and cleaning and user maintenance should not be carried out by children without supervision. The guarantee becomes null and void in case of improper usage. The appliance contains valuable materials that can be recovered or recycled.

Product Usage Instructions

1. Read the instructions and safety guidelines carefully before using the appliance.
2. Ensure that the appliance is used by persons who have the required knowledge and experience in handling such equipment.
3. Do not allow children to play with the appliance and do not let them clean or maintain it without supervision.
4. Use the appliance only for household purposes and not for professional purposes.
5. To ensure safety, always follow the safety guidelines provided in the user manual.
6. Dispose of the appliance at a local civic waste collection point or an approved recycling center after use.

Read the instructions carefully as well as the safety guidelines before use.

SAFETY

- For your safety, this appliance complies with the applicable standards and regulations (Low Voltage Directive, Electromagnetic Compatibility, Environmental...).
- The appliance's accessories become very hot during use. Avoid contact with the skin. Make sure that the supply cord never comes into contact with the hot parts of the appliance.

- Check that the voltage of your electricity supply matches the voltage of your appliance. Any error when connecting the appliance can cause irreparable harm, not covered by the guarantee.
- For additional protection, the installation of a residual current device (RCD) having a rated residual operating current not exceeding 30 mA is advisable in the electrical circuit supplying the bathroom. Ask for installer for advice.
- The installation of the appliance and its use must however comply with the standards in force in your country.
- **WARNING:** do not use this appliance near bathtubs, showers, basins or other vessels containing water.
- When the appliance is used in a bathroom, unplug it after use since the proximity of water presents a hazard even when the appliance is switched off.
- For other countries not subject to EU regulations: This appliance is not intended for use by persons (including children) with reduced physical, sensory or mental capabilities, or lack of experience and knowledge, unless they have been given supervision or instruction concerning use of the appliance by a person responsible for their safety. Children should be supervised to ensure that they do not play with the appliance.
- For countries subject to EU regulations This appliance can be used by children aged from 8 years and above and persons with reduced physical, sensory or mental capabilities or lack of experience and knowledge if they have been given supervision or instruction concerning use of the appliance in a safe way and understand the hazards involved. Children shall not play with the appliance. Cleaning and user maintenance shall not be made by children without supervision.
- If the supply cord is damaged, it must be replaced by the manufacturer, its service agent or similarly qualified persons in order to avoid a hazard.
- Stop using your appliance and contact an Authorised Service Centre if:
 - your appliance has fallen.
 - it does not work correctly.
- In case of overheating, the heat-sensitive safety device will stop the dryer automatically. Check and clean the inlet and outlet grills or contact the After-Sales Service.
- The appliance must be unplugged: before cleaning and maintenance procedures, if it is not working correctly, as soon as you have finished using it, if you leave the room, even momentarily.
- Do not use if the cord is damaged.
- Do not immerse or put under running water, even for cleaning purposes.
- Do not hold with damp hands.
- Do not hold the appliance by the casing, which is hot, but by the handle.
- Do not unplug by pulling on the cord, rather pull out by the plug.
- Do not use an electrical extension lead.
- Do not clean with abrasive or corrosive products.
- Do not use at temperatures below 0°C and above 35°C.

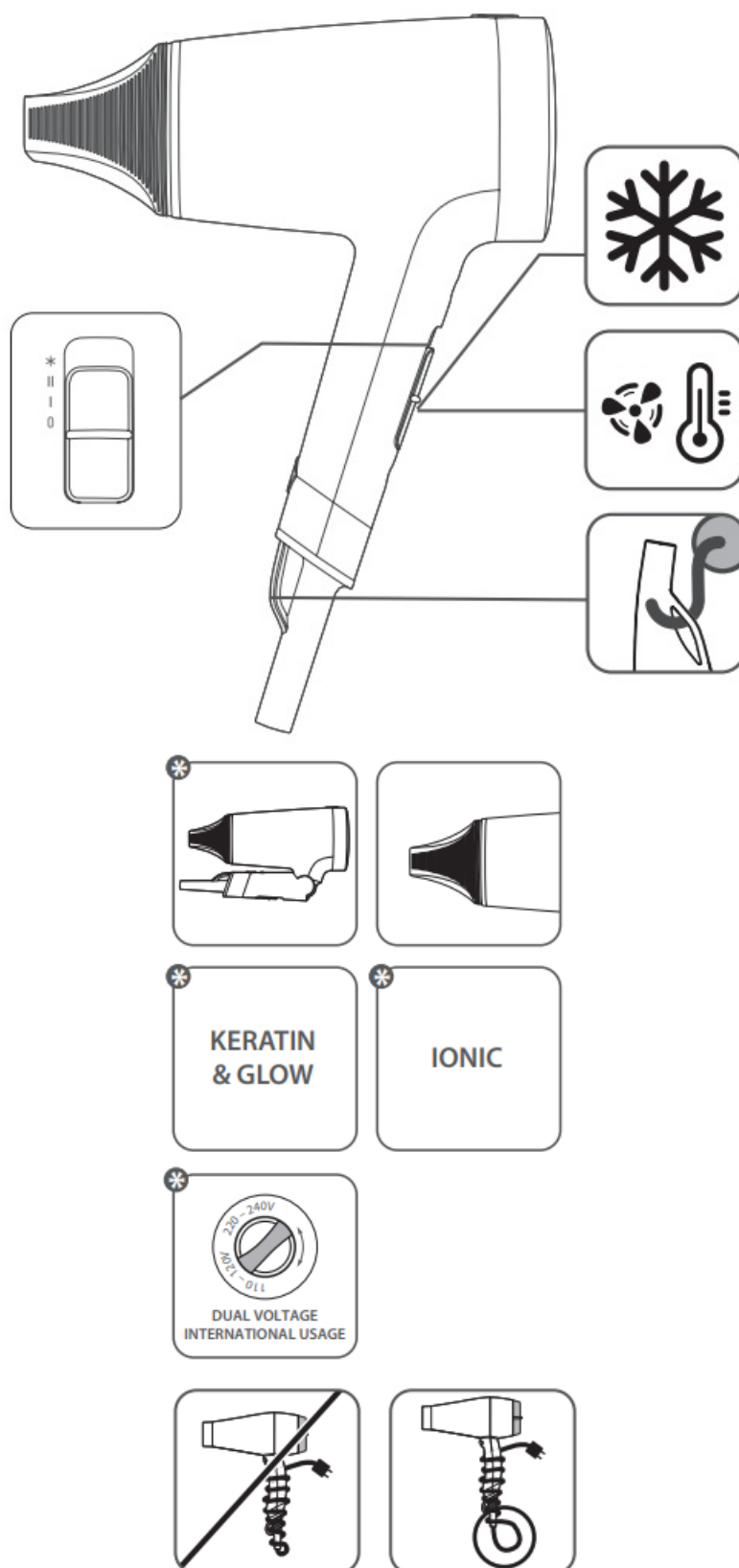
GUARANTEE

Your appliance is designed for use in the home only. It should not be used for professional purposes. The guarantee becomes null and void in the case of improper usage.

ENVIRONMENT PROTECTION FIRST!

Your appliance contains valuable materials which can be recovered or recycled. Leave it at a local civic waste collection point. These instructions are also available on our website www.rowenta.com

FUNCTION



- www.rowenta.com



Rowenta Express Style [pdf] Instruction Manual

CV1801F0 Express Style Hair Dryer, CV1801F0, Dryer, Hair Dryer, CV1801F0 Hair Dryer, Express Style Hair Dryer

References

- [Rowenta USA | Garment Steamers, Steam Irons & Humidifiers](#)
- [Rowenta | Pegle, usisivači i fenovi za kosu](#)
- [Rowenta | Pegle, Usisivači i Fenovi Za Kosu](#)
- [Rowenta USA | Garment Steamers, Steam Irons & Humidifiers](#)

Manuals+