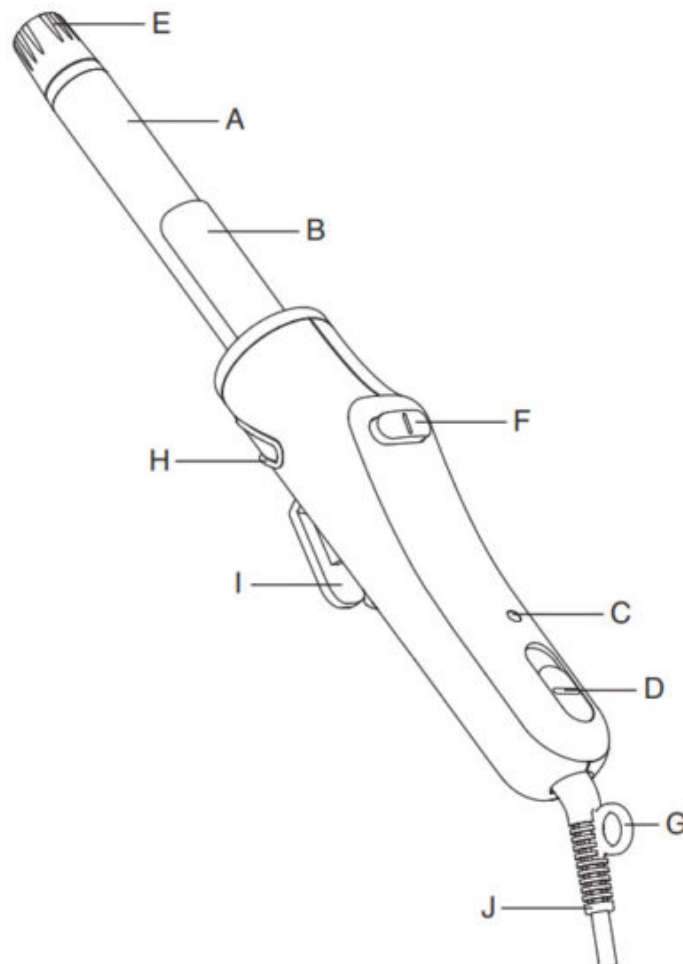


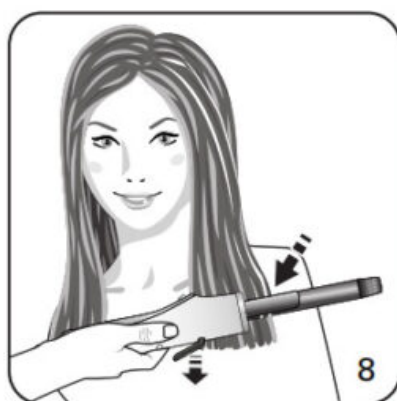
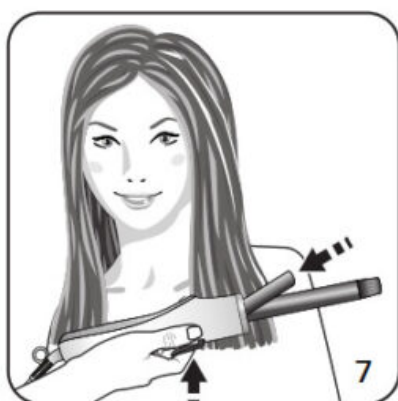
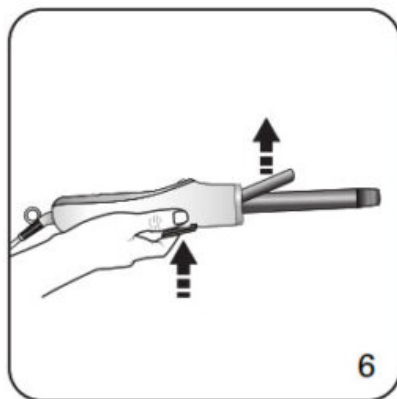
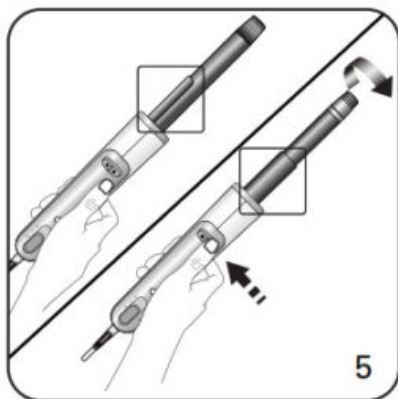
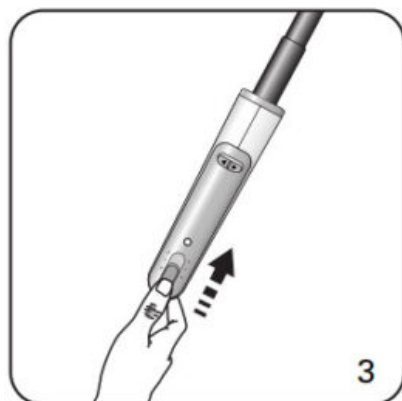
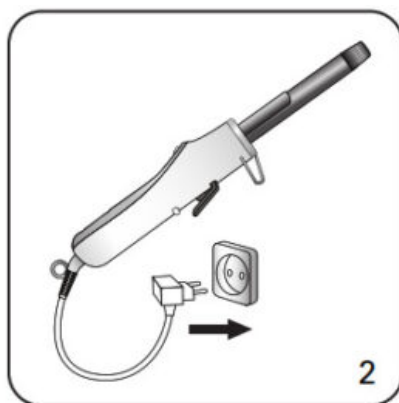
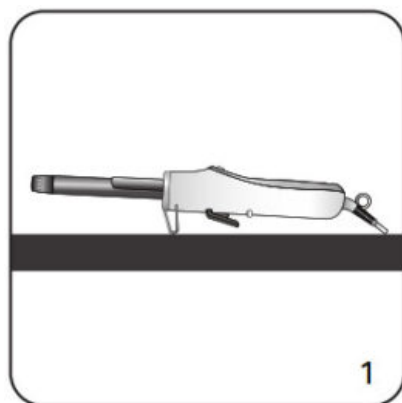


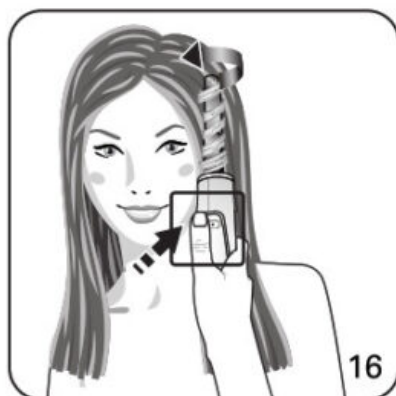
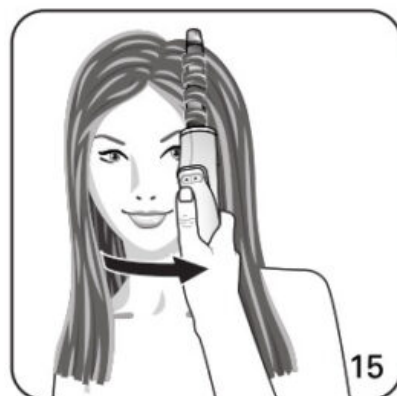
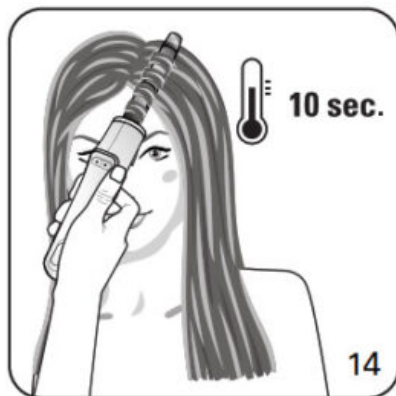
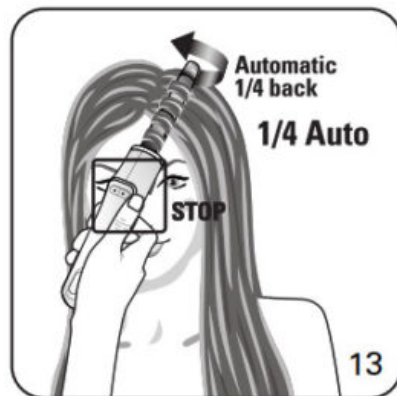
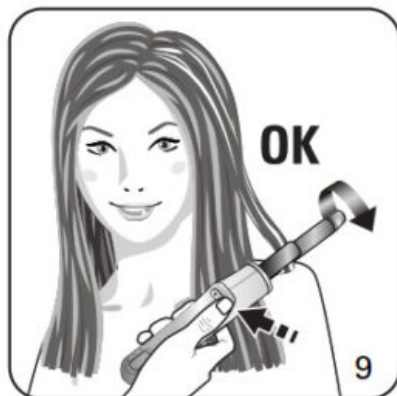
Rowenta CF6510D4 Curl Activ Curling Tong Instruction Manual

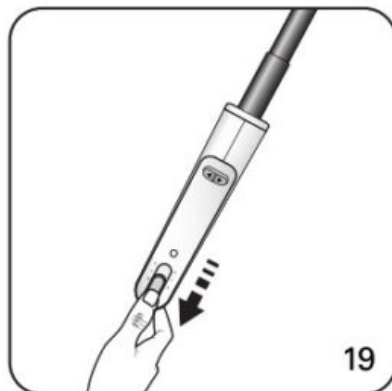
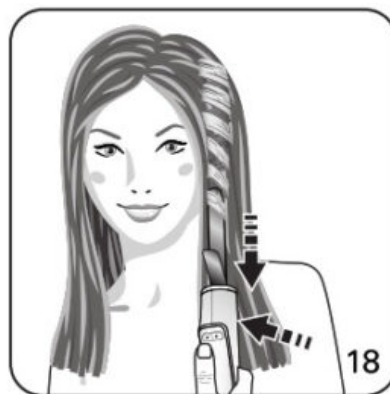
[Home](#) » [Rowenta](#) » Rowenta CF6510D4 Curl Activ Curling Tong Instruction Manual 

Rowenta INTELLIGENT BEAUTY CF6510D4 Curl Activ Curling Tong Instruction Manual









Please read the instructions and safety precautions carefully before you use the curling tongs.

Contents

- [1 PARTS](#)
- [2 SAFETY INSTRUCTIONS](#)
- [3 GUARANTEE:](#)
- [4 SWITCHING ON](#)
- [5 USING THE TONGS](#)
- [6 MAINTENANCE](#)
- [7 ENVIRONMENT PROTECTION FIRST!](#)
- [8 COMMON PROBLEMS](#)
- [9 Documents / Resources](#)
 - [9.1 References](#)
- [10 Related Posts](#)

PARTS

- A.** Ceramic coated barrel (23mm diameter)
- B.** Clamp
- C.** Power indicator
- D.** On/off – temperature switch (2 temperature settings)
- E.** Cool-touch tip
- F.** Direction of turn (left/right)
- G.** Hanging ring
- H.** Counter rest
- I.** Lever to open/close clamp
- J.** Swivel power cord

SAFETY INSTRUCTIONS

- For your safety, this appliance complies with the applicable standards and regulations (Low Voltage Directive, Electromagnetic Compatibility, Environmental...).
- The appliance's accessories become very hot during use. Avoid contact with the skin. Make sure that the supply cord never comes into contact with the hot parts of the appliance.
- Check that the voltage of your electricity supply matches the voltage of your appliance. Any error when connecting the appliance can cause irreparable harm, not covered by the guarantee.
- Do not use this appliance if you are using it in the UK. If you are using it outside of the UK then as an additional safety measure, we recommend the installation of a residual current difference device in the electrical circuit supplying the bathroom, acting at not more than 30 mA. Ask your installer for advice.
- The installation of the appliance and its use must however comply with the standards in force in your country.



- **CAUTION:** Never use your appliance with wet hands or near water contained in bathtubs, showers, sinks, or other containers...
- If using the appliance outside of the UK and you are using it in the bathroom, unplug it after use as the presence of water nearby may pose a danger even when the appliance is turned off.
- This appliance is not intended for use by persons (including children) with reduced physical, sensory or mental capabilities, or lack of experience and knowledge unless they have been given supervision or instruction concerning the use of the appliance by a person responsible for their safety. Children should be supervised to ensure that they do not play with the appliance.
- If the supply cord is damaged, it must be replaced by the manufacturer, its service agent, or similarly qualified persons in order to avoid a hazard.
- Stop using your appliance and contact an Authorised Service Centre if: – your appliance has fallen. – it does not work correctly.
- The appliance must be unplugged: – before cleaning and maintenance procedures. – if it is not working correctly. – as soon as you have finished using it. – if you leave the room, even momentarily.
- Do not use it if the cord is damaged.
- Do not immerse or put under running water, even for cleaning purposes.
- Do not hold with damp hands.
- Do not hold the appliance by the casing, which is hot, but by the handle.
- Do not unplug by pulling on the cord, rather pull out by the plug.
- Do not use an electrical extension lead.
- Do not clean with abrasive or corrosive products.
- Do not use at temperatures below 0°C and above 35°C.

GUARANTEE:

This product has been designed for domestic use only. Any commercial use, inappropriate use or failure to comply with the instructions, the manufacturer accepts no responsibility and the guarantee will not apply.

SWITCHING ON

- Place the tongs on a flat surface with the counter rest extended.
- Plug in the tongs.

– Select the right temperature for your hair:

If your hair is fragile or fine, use setting 1.

TIPS: This setting is strongly recommended when you first use the tongs.

If your hair is strong and healthy, use setting 2.

– The tongs will be ready to use after 1 minute 30 seconds.

– To switch off the tongs set the switch to 0.

NB: Do not forget that the tongs may still be hot: to avoid the risk of burns do not touch the barrel. The tongs will be safe to handle after approximately 20 minutes.

USING THE TONGS

Before you use the tongs

- Make sure your hair is completely dry before you use the tongs.
- Use a long-toothed comb to eliminate any tangles.
- Separate your hair into sections (max. 3 cm in width) To curl your hair
- Press the direction of the turn button so that the barrel rotates and the clamp is facing you.
- Open the clamp by pressing the clamp release.
- Place the end of your section of hair between the clamp and the barrel. TIPS: If you prefer, you can also place your hair between the clamp and the barrel halfway up the section. Then slide the tongs gently to the end of your hair.
- Press the lever to close the clamp. Your hair is ready to curl.
- Press the button to start winding. The tongs will wind your hair around the barrel automatically.

NB: See illustrations 9 & 10 to better find the direction your hair is wound.

TIPS: Tilt the tongs slightly so that the section of hair is wound along the barrel. Pull the tongs away from you so that your hair is kept taut.

- When your hair is wound around the barrel, release the winding button. For safety reasons, the barrel will wind back a short distance.
- Hold the tongs in place for approximately 10 seconds.

To release your hair:

- Hold the tongs upright.
- Without pulling the tongs downwards press the reverse winding button to unwind half the section. **WARNING!**
Be careful not to pull the tongs down when you are doing this.
- Press the lever to open the clamp.
- Slide the tongs downwards to release the curl.
- Repeat these steps to create more curls.

MAINTENANCE

Unplug the tongs and leave them to cool down on the counter rest. Clean the tongs when they have cooled down completely. Wipe them with a soft damp cloth. Never allow water or any other liquid to enter the barrel.



ENVIRONMENT PROTECTION FIRST!



Your appliance contains valuable materials which can be recovered or recycled.



Leave it at a local civic waste collection point.

COMMON PROBLEMS

- **What can I do if my curls come apart at the ends?**
- You have wound the curl the wrong way. Be careful to wind in the right direction.
- **What can I do if the curls are not properly shaped?**
- Make sure that your hair is dry.
- Curl a smaller section of hair.
- If you are using setting 1, change to setting 2.
- Hold the tongs in place for a few extra seconds. (Be careful not to use them for longer than 20 seconds.)
- Make sure you pull the section of hair taut as it is wound around the barrel.
- **I have difficulty releasing my hair.**
- Press the reverse wind button and you will be able to free it.

TIPS: If your hair is layer-cut, make sure you curl sections that are the same length.

DEMONSTRATION

You can see a practical demonstration of the product on the internet.

For more advice on using CURL ACTIV go to our website: www.rowenta.com. You will find a video clip giving a simple explanation of how to use the tongs and get fabulous curls at the flick of a wrist.



Documents / Resources



[Rowenta CF6510D4 Curl Activ Curling Tong](#) [pdf] Instruction Manual
CF6510D4, Curl Activ Curling Tong, CF6510D4 Curl Activ Curling Tong

References

- [Rowenta USA | Garment Steamers, Steam Irons & Humidifiers](#)