



Rowenta CF5122F0 Styling Brush Instruction Manual

[Home](#) » [Rowenta](#) » Rowenta CF5122F0 Styling Brush Instruction Manual 

Contents

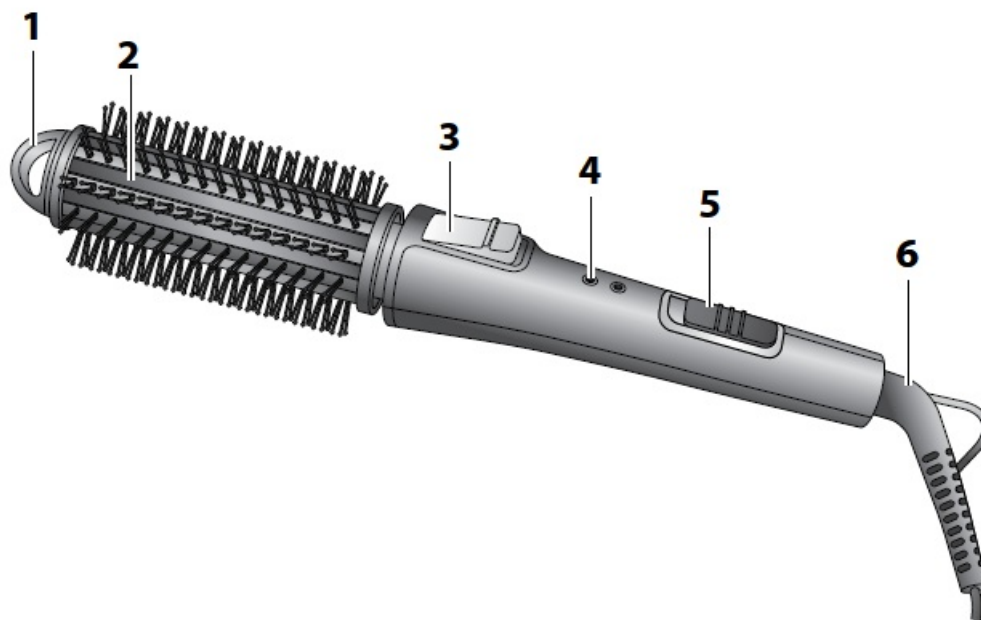
- [1 Rowenta CF5122F0 Styling Brush](#)
- [2 GENERAL DESCRIPTION](#)
- [3 SAFETY INSTRUCTIONS](#)
- [4 GUARANTEE](#)
- [5 Documents / Resources](#)
 - [5.1 References](#)
- [6 Related Posts](#)

Rowenta

Rowenta CF5122F0 Styling Brush



GENERAL DESCRIPTION

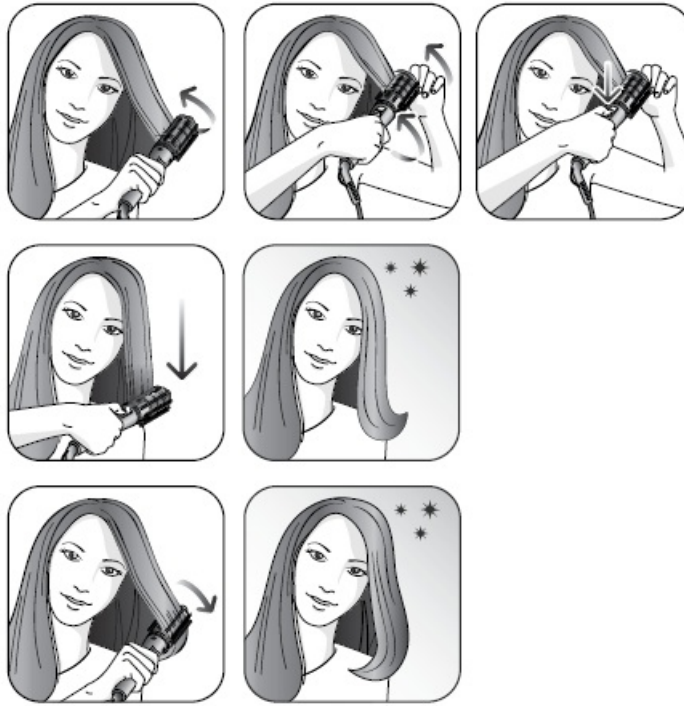


1. Hanging loop
2. Heating plates
3. Release switch
4. Indicator lights
5. On/Off switch:
 - I (low-temperature setting)
 - II (max. temperature setting)
6. Power cord

A. CREATE VOLUME



B. HAIR STYLING



A – Create volume

B – Hair styling

This appliance is not adapted to roll hair ends up to roots, risk of hair tangle.

SAFETY INSTRUCTIONS

- For your safety, this appliance complies with the applicable standards and regulations (Low Voltage Directive, Electromagnetic Compatibility, Environmental...).
- Make sure that the supply cord never comes into contact with the hot parts of the appliance.
- Check that the voltage of your electricity supply matches the voltage of your appliance.
- Any error when connecting the appliance can cause irreparable harm, not covered by the guarantee.
- For additional protection, the installation of a residual current device (RDC) having a rated residual operating current not exceeding 30 mA is advisable in the electrical circuit supplying the bathroom. Ask for installer for advice.
- The installation of the appliance and its use must however comply with the standards in force in your country.
- **WARNING:** do not use this appliance near bathtubs, showers, basins or other vessels containing water.
- This appliance is not intended for use by persons (including children) with reduced physical, sensory or mental capabilities, or lack of experience and knowledge, unless they have been given supervision or instruction concerning use of the appliance by a person responsible for their safety. Children should be supervised to ensure that they do not play with the appliance.
- from 8 years and above and persons with reduced physical, sensory or mental capabilities or lack of experience and knowledge if they have been given supervision or instruction concerning use of the appliance in a safe way and understand the hazards involved. Children shall not play with the appliance. Cleaning and user maintenance shall not be made by children without supervision.
- If the supply cord is damaged, it must be replaced by the manufacturer, its service agent or similarly qualified persons in order to avoid a hazard.

- Stop using your appliance and contact an Authorised Service Centre if:
 - your appliance has fallen.
 - it does not work correctly.
- The appliance is equipped with a heat-sensitive safety device. In the event of overheating (for example if the rear grill is blocked), the dryer will stop automatically: contact the After-Sales Service.
- The appliance must be unplugged:
 - before cleaning and maintenance procedures.
 - if it is not working correctly.
 - as soon as you have finished using it.
 - if you leave the room, even momentarily.
- Do not use if the cord is damaged.
- Do not immerse or put under running water, even for cleaning purposes.
- Do not hold with damp hands.
- Do not hold the appliance by the casing, which is hot, but by the handle.
- Do not unplug by pulling on the cord, rather pull out by the plug.
- Do not use an electrical extension lead.
- Do not clean with abrasive or corrosive products.
- Do not use at temperatures below 0°C and above 35°C.

GUARANTEE

Your appliance is designed for use in the home only. It should not be used for professional purposes. The guarantee becomes null and void in the case of improper usage.

ENVIRONMENT PROTECTION FIRST!

Your appliance contains valuable materials which can be recovered or recycled. Leave it at a local civic waste collection point.

These instructions are also available on our website www.rowenta.com.

Documents / Resources



[Rowenta CF5122F0 Styling Brush](#) [pdf] Instruction Manual
CF5122F0, Styling Brush, CF5122F0 Styling Brush

References

- [Rowenta USA | Garment Steamers, Steam Irons & Humidifiers](#)
- [Rowenta Česká republika | Žehličky, vysavače a fény](#)