



Rowenta CF3352F0 Curling Tong Instruction Manual

[Home](#) » [Rowenta](#) » Rowenta CF3352F0 Curling Tong Instruction Manual 

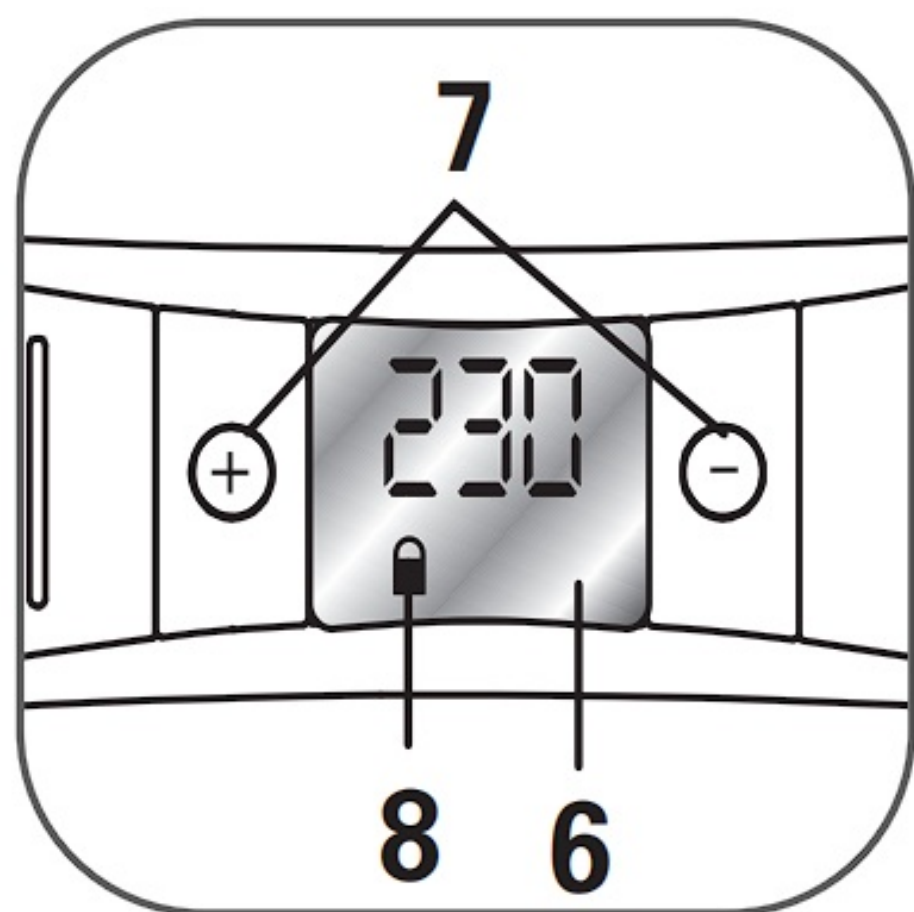
Rowenta CF3352F0 Curling Tong



Contents

- [1 GENERAL DESCRIPTION](#)
- [2 SAFETY INSTRUCTIONS](#)
- [3 BRINGING INTO SERVICE](#)
- [4 MAINTENANCE](#)
- [5 ENVIRONMENT PROTECTION FIRST!](#)
- [6 Documents / Resources](#)
- [7 Related Posts](#)

GENERAL DESCRIPTION



6. Digital screen
7. +/- button to reduce/increase temperature
8. Temperature locked during use
9. Rotating power cord outlet
10. Power supply cord

SAFETY INSTRUCTIONS

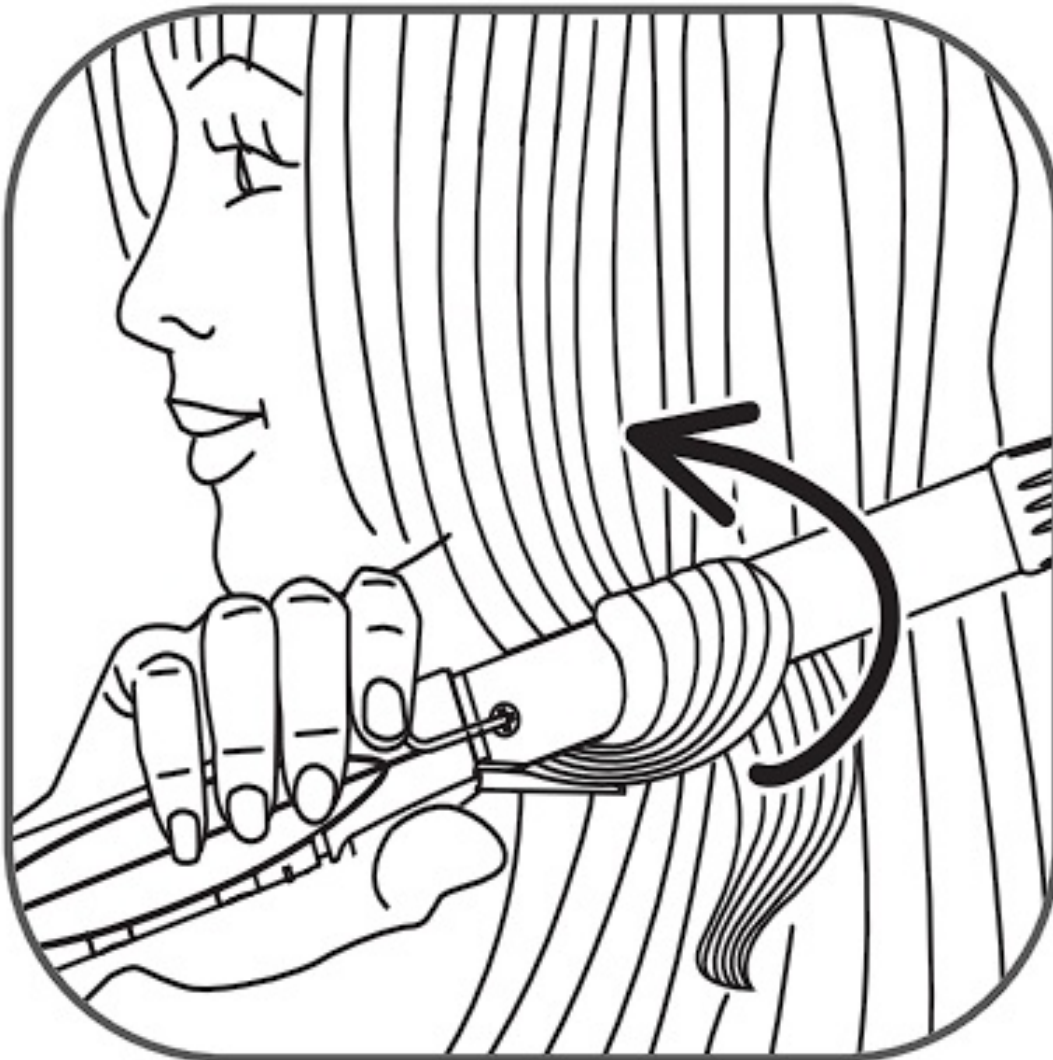
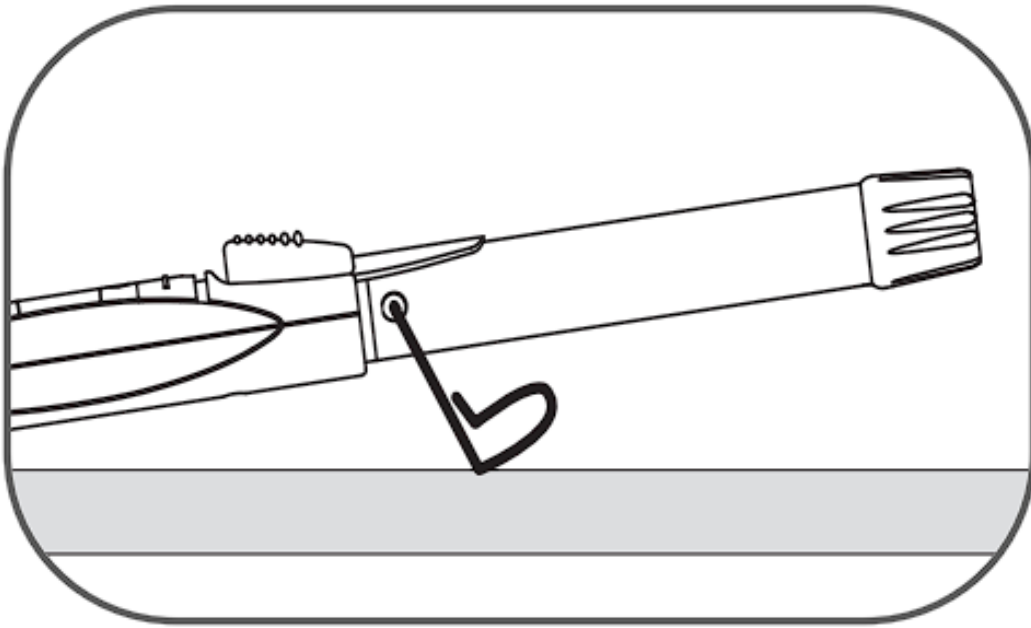
- For your safety, this appliance complies with the applicable standards and regulations (Low Voltage Directive, Electromagnetic Compatibility, Environmental...).
- The appliance's accessories become very hot during use. Avoid contact with the skin. Make sure that the supply cord never comes into contact with the hot parts of the appliance.
- Check that the voltage of your electricity supply matches the voltage of your appliance. Any error when connecting the appliance can cause irreparable harm, not covered by the guarantee.
- As an additional safety measure, we recommend the installation of a residual current difference device in the electrical circuit supplying the bathroom, acting at not more than 30 mA. Ask your installer for advice.
- The installation of the appliance and its use must however comply with the standards in force in your country.
- **CAUTION:** Never use your appliance with wet hands or near water contained in bath tubs, showers, sinks or other containers...
- When using the appliance in the bathroom, unplug it after use as the presence of water nearby may pose a danger even when the appliance is turned off.
- This appliance is not intended for use by persons (including children) with reduced physical, sensory or mental capabilities, or lack of experience and knowledge, unless they have been given supervision or instruction concerning use of the appliance by a person responsible for their safety. Children should be supervised to ensure that they do not play with the appliance.
- If the supply cord is damaged, it must be replaced by the manufacturer, its service agent or similarly qualified persons in order to avoid a hazard.
- Stop using your appliance and contact an Authorised Service Centre if: – your appliance has fallen.
– it does not work correctly.
- The appliance must be unplugged: – before cleaning and maintenance procedures.
– if it is not working correctly.
– as soon as you have finished using it.
– if you leave the room, even momentarily.
- Do not use if the cord is damaged.
- Do not immerse or put under running water, even for cleaning purposes.
- Do not hold with damp hands.
- Do not hold the appliance by the casing, which is hot, but by the handle.
- Do not unplug by pulling on the cord, rather pull out by the plug.
- Do not use an electrical extension lead.
- Do not clean with abrasive or corrosive products.
- Do not use at temperatures below 0°C and above 35°C.

GUARANTEE:

Your appliance is designed for domestic use only. It should not be used for professional purposes. The guarantee

becomes null and void in the case of improper usage.

BRINGING INTO SERVICE





- Place the appliance in a stable position on its rest on a flat surface.
- Plug it in and set the On/Off switch to On (position 1).
- Wait a few minutes to allow your hair styler to reach its working temperature.
- Select the ideal temperature for your hair using the +/- buttons: press the - button to reduce the temperature or the + button to increase it. The digital screen will show the selected temperature.
- To turn the appliance off, set the ON / OFF switch to position 0.

Note: To avoid any handling error (inadvertently pressing the +/- buttons during use) this appliance is equipped with a locking function. If you wish to lock your temperature setting during use, press the + or - button for 2 seconds. Your setting is being locked, a padlock appears on the screen. If you wish to change your appliance's temperature, you will need to unlock it by again pressing the + or - button for 2 seconds. Your setting is being unlocked, the padlock disappears from the screen. You can change the temperature by pressing the buttons +/-.

MAINTENANCE

Unplug your styler and leave to cool on its stand. Clean appliance when fully cooled. To clean the handle, wipe with a soft, damp cloth. Never allow water or any other liquid to enter the handle.

ENVIRONMENT PROTECTION FIRST!



Your appliance contains valuable materials which can be recovered or recycled.



Leave it at a local civic waste collection point.

Rowenta

Documents / Resources



[Rowenta CF3352F0 Curling Tong](#) [pdf] Instruction Manual
CF3352F0, Curling Tong, CF3352F0 Curling Tong