



## Rowenta 852 Rotating Brush Instruction Manual

[Home](#) » [Rowenta](#) » Rowenta 852 Rotating Brush Instruction Manual 

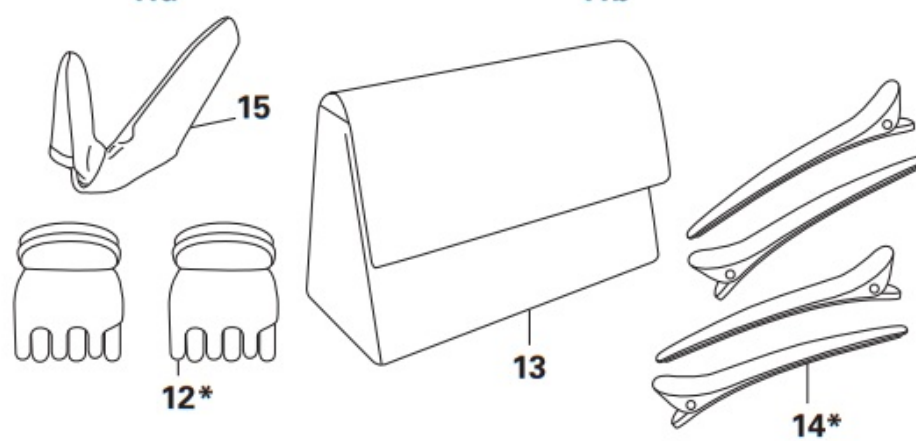
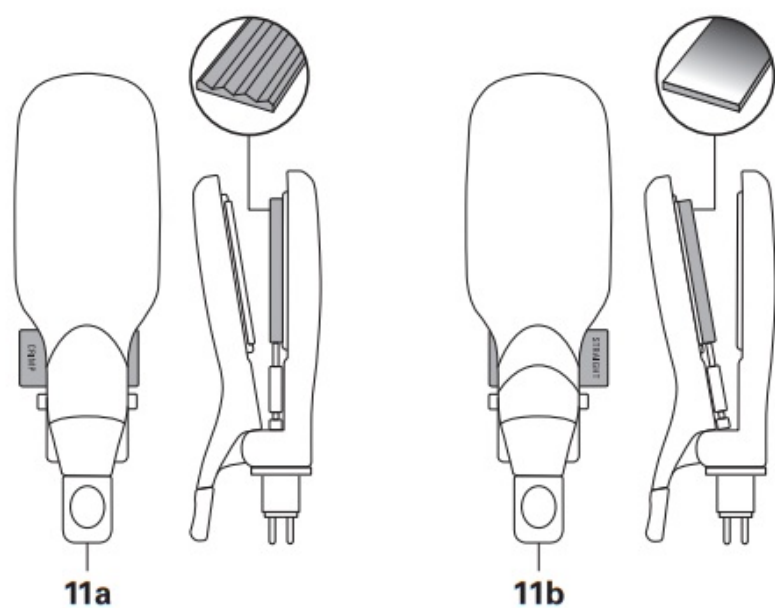
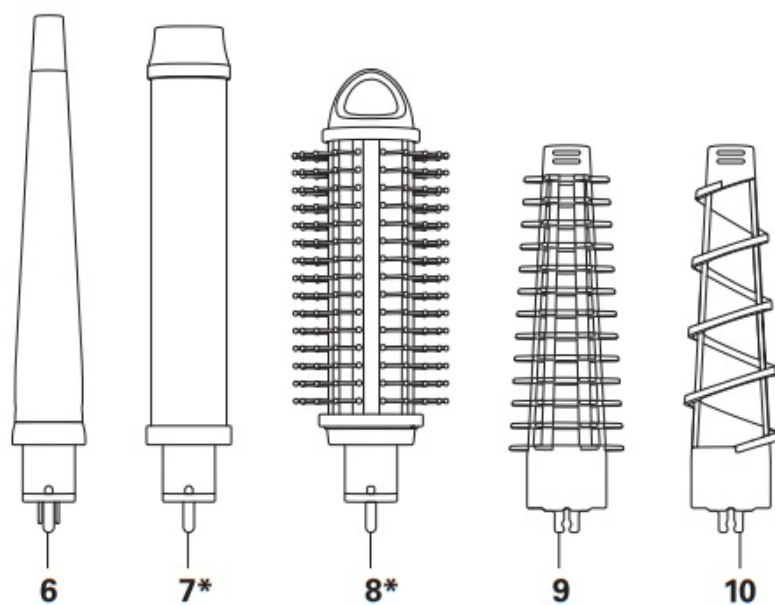
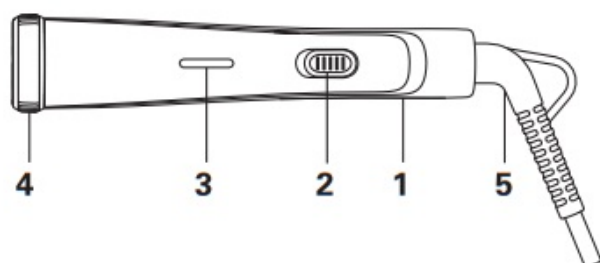
# Rowenta®

852 Rotating Brush  
Instruction Manual

### Contents

- 1 852 Rotating Brush
- 2 According to model
- 3 GENERAL DESCRIPTION
- 4 SAFETY
- 5 GUARANTEE:
- 6 BEFORE FIRST USE
- 7 OPERATION
- 8 PROFESSIONAL TIPS
- 9 CLEANING
- 10 Documents / Resources
  - 10.1 References
- 11 Related Posts

**852 Rotating Brush**



According to model

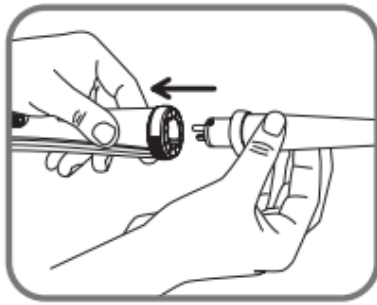


fig. 1

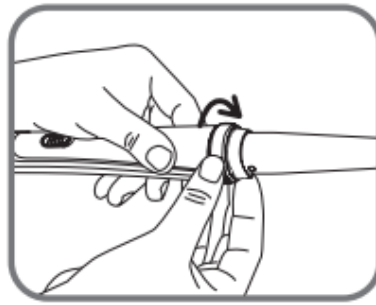


fig. 2

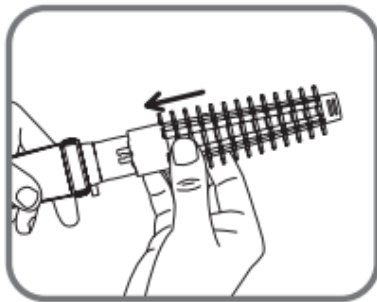


fig. 3

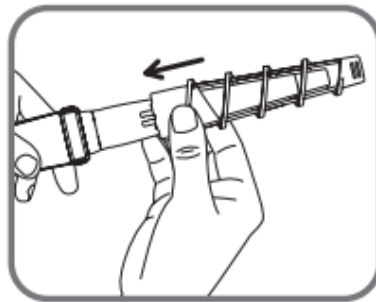


fig. 3

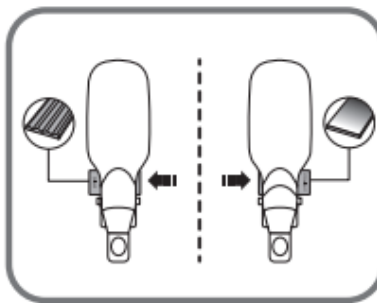


fig. 4a

fig. 4b

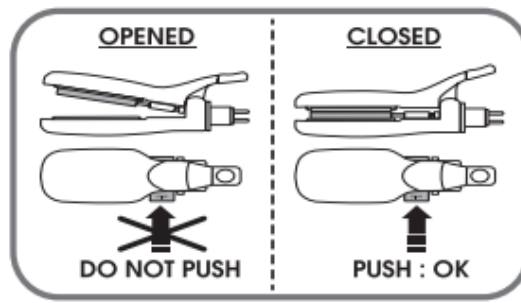


fig. 5

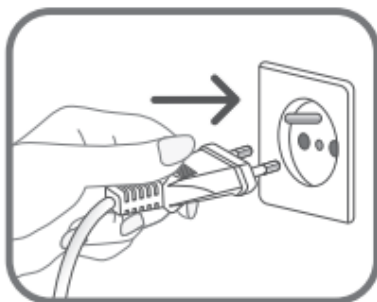


fig. 6

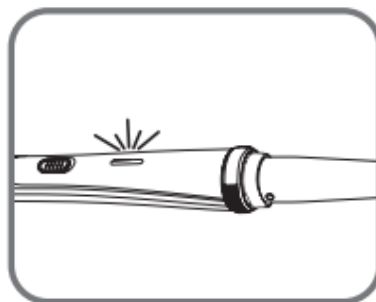


fig. 7



fig. 8



fig. 9



fig. 10



fig. 11



fig. 12



fig. 13a

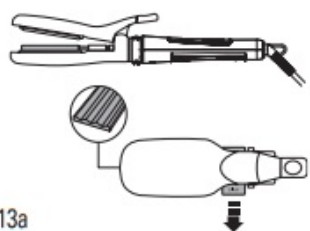
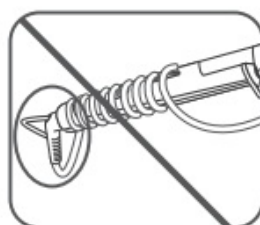
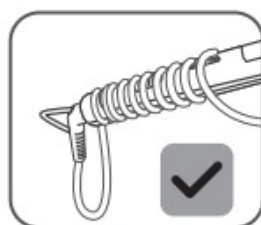
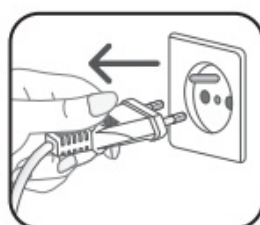
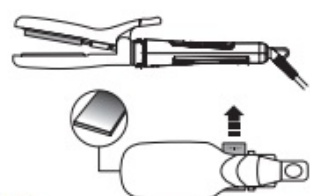


fig. 13b



## GENERAL DESCRIPTION

1. Handle
2. On/O! switch (1-0)
3. "Power on" light
4. Accessory locking – unlocking – ring

5. Swivel power cord

### ACCESSORIES

6. Conical wand
7. Oval wand\*
8. Heated brush 32mm\*
9. Massage hair brush for conical wand
10. Spiral hair brush for conical wand
  - 11a. Crimper plates
  - 11b. Straightener plates
11. 2 small clippers\*
12. Storage pouch
13. 4 medium clippers\*
14. Protective glove (2 fingers)

## SAFETY

- Burn hazard. Keep appliance out of reach from young children, particularly during use and cool down.
- When the appliance is connected to the power supply, never leave it unattended.
- Always place the appliance with the stand, if any, on a heat-resistant, stable flat surface.

- For your safety, this appliance complies with the applicable standards and regulations (Low Voltage Directive, Electromagnetic Compatibility, Environmental...)
- The appliance's accessories become very hot during use, Avoid contact with the skin. Make sure that the supply cord never comes into contact with the hot parts of the appliance.
- Check that the voltage of your electricity supply matches the voltage of your appliance. Any error when connecting the appliance can cause irreparable harm, not covered by the warranty.
- For additional protection, the installation of a residual current device (RCD) having a rated residual operating current not exceeding 30 mA is advisable in the electrical circuit supplying the bathroom. Ask for installer for advice.
- The installation of the appliance and its use must however comply with the standards in force in your country.
- **WARNING:** do not use this appliance near bathtubs, showers, basins or other vessels containing water.
- When the appliance is used in a bathroom, unplug it after use since the proximity of water presents a hazard even when the appliance is switched off.
- For other countries not subject to EU regulation. This appliance is not intended for use by persons (including children) with reduced physical, sensory or mental capabilities, or lack of experience and knowledge, unless they have been given supervision or instruction concerning use of the appliance by a person responsible for their safety. Children should be supervised to ensure that they do not play with the appliance.

- For other countries subject to EU regulation. This appliance can be used by children aged from 8 years and above and persons with reduced physical, sensory or mental capabilities or lack of experience and knowledge if they have been given supervision or instruction concerning use of the appliance in a safe way and understand the hazards involved. Children shall not play with the appliance. Cleaning and user maintenance shall not be made by children without supervision.
- If the supply cord is damaged, it must be replaced by the manufacturer, its service agent or similarly qualified persons in order to avoid a hazard.
- Stop using your appliance and contact an Authorised Service Centre if:
  - your appliance has fallen.
  - it does not work correctly.
- The appliance must be unplugged:
  - before cleaning and maintenance procedures.
  - if it is not working correctly.
  - as soon as you have finished using it.
  - if you leave the room, even momentarily.
- Do not use if the cord is damaged.
- Do not immerse or put under running water, even for cleaning purposes.
- Do not hold with damp hands.
- Do not hold the appliance by the casing, which is hot, but by the handle.
- Do not unplug by pulling on the cord, rather pull out by the plug.
- Do not use an electrical extension lead.
- Do not clean with abrasive or corrosive products.
- Do not use at temperatures below 0°C and above 35°C.

## **GUARANTEE:**

Your appliance is designed for use in the home only.

It should not be used for professional purposes.

The guarantee becomes null and void in the case of improper usage.

## **BEFORE FIRST USE**

In order to avoid the risk of burns, attach the accessories to the appliance only when it is cool.

Allow the accessories to cool down before storing them in the case.

3a / Placing and removing the irons:

1. Place the irons on the handle (Fig1)
2. Turn the screw ring located on the handle in order to lock the accessory (Fig2)

Follow the same procedure with all the irons. To remove, follow the inverse procedure.

3b / Placing and removing the brushes:

Slide the brush on the curling iron while it is cool. (Fig. 3).

To remove the brushes, slide them in the opposite sense.

3c / Placing the crimper/straightener

1. Place the crimper/straightener on the handle (Fig1)
2. Turn the screw ring located on the handle in order to lock the accessory (Fig2)

Keeping the crimper/straightener closed, (Fig 5) set the accessory in the “crimp” position in order to use the crimping plates (fig.4a) or in the “straight” position (fig.4b) to use the straightening plates.

## **PLUGGING IN YOUR HAIR STYLER:**

- When you have attached an accessory to the handle, place the appliance in a stable position on its rest, on a flat surface.
- Plug it in and set the On/Off switch to On (position 1). The ‘Power on’ light will come on and the accessory will begin to heat up. (Fig 6,7)
- Wait a few minutes to allow your hair styler to reach its working temperature (1-3 min. for the “iron” accessories; 6 min. for the crimping plates).

## **OPERATION**

Use this product on clean, untangled, DRY hair (to avoid damaging your hair).  
Put on the glove, rough surface on the palm hand side.

### **1 – STYLING IRONS**

Fig. 8 – Curls

Fig. 9 – Waves

– Gather a small section of hair (approx. 2 to 3 cm across).

– Wind the lock around the mandrel.

– After a few seconds of setting, unwind it in the opposite direction.

– Repeat the procedure with different sections of hair to form more curls.

## **PROFESSIONAL TIPS**

- To create extra volume: divide your curls using your fingers.
- To obtain really tight curls: wind small sections of hair at a time.
- For softer curls: wind on more hair.
- For a more natural, wavy look: lightly brush or comb your hair once the curls have cooled.

### **2 – BRUSHES**

2a 32mm heated brush Fig.10 – faux blow-out

– Take a strand of hair, and brush the lock in a smooth, continuous motion, from the root to the tip

– Repeat this until you have the desired result.

2b Massage brush Fig 11 – large curls, waves

– Take a strand of hair and roll it around the brush.

– Keep in place for 10 to 15 seconds, then unroll carefully.

2c Spiral brushes Fig 12 – Spiral curls (English style)

– Take a strand of hair and roll it around the brush.

– Keep in place for 10 to 15 seconds, then unroll carefully.

## **PROFESSIONAL TIPS**

- Allow your hair to cool before styling.

### **3 – CRIMPER/STRAIGHTENER**

3a Crimper

Fig.13a – For crimped hair

- Gather a section of hair approximately 5 cm across, starting at the root of the hair.
- Press the lever to open the crimper attachment, and place the hair between the crimping plates.
- Close the crimping plates for around 10 seconds.
- Release the hair and start again just below the wave just formed.

## PROFESSIONAL TIPS

- Always work from the roots towards the tips of the hair.
- To enhance the effect, you can apply styling mousse before crimping.

### 3b – Straightener

Fig.13b – For straightened hair

- Your hair should be dry and tangle-free.
- Gather a section of hair approximately 5 cm across, starting at the root of the hair.
- Press the lever to open the straightening attachment, and place the hair between the straightening plates.
- Slide the appliance slowly down from the root to the tip of the hair.

## PROFESSIONAL TIPS

- To avoid kinks in long sections of hair, use a smooth, continuous movement.
- To enhance the effect, you can apply styling mousse before straightening.

## CLEANING

- Unplug your styler and leave to cool on its stand.
- Clean accessories when fully cooled. To clean the handle, wipe with a soft, damp cloth.
- Never allow water or any other liquid to enter the handle.

## ENVIRONMENT PROTECTION FIRST!



Your appliance contains valuable materials which can be recovered or recycled.  
Leave it at a local civic waste collection point.

These instructions are also available on our website [www.rowenta.com](http://www.rowenta.com).

## Documents / Resources



[Rowenta 852 Rotating Brush](#) [pdf] Instruction Manual  
852 Rotating Brush, 852, Rotating Brush, Brush

## References

- [Rowenta | Pegle, Usisivači i Fenovi Za Kosu](#)
- [Rowenta USA | Garment Steamers, Steam Irons & Humidifiers](#)