



ROTOLIGHT RL48 Ultimate Vlogging Kit User Guide

[Home](#) » [Rotolight](#) » ROTOLIGHT RL48 Ultimate Vlogging Kit User Guide 



Contents

1 QUICK START GUIDE

- 1.1 Thank you for choosing a Rotolight kit.
- 1.2 Opening the Rotolight RL48-B
- 1.3 Batteries :
- 1.4 Mounting the Rotolight stand to twin accessory bar
- 1.5 Specifications: *optional
- 1.6 Using the filter holder
- 1.7 How to mount Rotolight using the Rotolight Stand
- 1.8 How to mount Rotolight on your Shotgun Mic
- 1.9 Colour Temperature Filters
- 1.10 Using the included filters

2 Documents / Resources

3 Related Posts

QUICK START GUIDE



Thank you for choosing a Rotolight kit.

Thank you for buying Rotolight's kit for content creators, YouTubers and makeup artists. This quick start guide will give you all the information you need to get started creating great-looking videos in moments. You can register and activate your product warranty at www.rotolight.com

Opening the Rotolight RL48-B

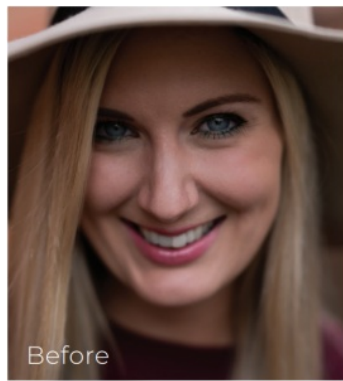
- 1) To open the Rotolight, hold the RL48 face down. Hold the back of the Rotolight with your right hand, then rotate the back counter clockwise to open the body of the light.
- 2) When the Rotolight is open you can change the batteries (3 x AA), read the filter chart, and access the filters stored in the back of the light.



Batteries :

Use 3 x Rotolight LionHeart Pro (available at rotolight.com), or alternatively Eneloop Pro or lithium batteries for best performance at up to four hours continuous use.





Mounting the Rotolight stand to twin accessory bar

Attach accessory bar to the Rotopod using the centre hole and twist to secure.

Mount the RL48 light (with attached Rotolight stand as above) to either side of the twin accessory bar and twist the bottom screw to tighten whilst holding the light

Secure your phone to the smartphone clip, and mount to the accessory bar as above.



Specifications:

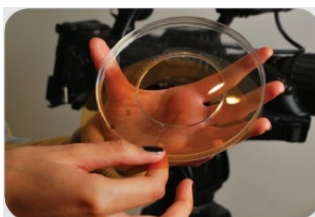
***optional**

Model:	Rotolight RL48-B
Size:	130OD/38ID(mm)
Weight:	6oz/170grams
Power:	3 x AA Batteries
Battery Life:	Up to 4 Hours (Li-Ion)
Lux (at 1 meter):	242 Lux (1000 Lumens)
Colour Temperature:	5600K (4100K, 3200K with filters)
Included Filters:	LED 204, 205, 216, 184
Beam Angle:	140 Degrees
Mounting:	Shotgun mic or RL48 stand, 1/4" thread using RL48 stand

Rotolight™ is a registered trademark (001740705-0001) of Rotolight Group Ltd. Rotolight RL48-B (001740705) and Rotolight Stand (001740713) are registered designs. All rights reserved. © 2020 Rotolight Group Ltd.

Using the filter holder

The RL48's filter holder is designed to be weatherproof so may need a bit of force to remove. This is to make sure that you can shoot uninterrupted; rain or shine! To remove the filter holder, place your thumb in the middle of the front face of the Rotolight (near the power button) and use your other fingers to lift the outer edge of the filter holder away from the face of the Rotolight. To fit the filter holder, simply hold it with the open side facing upwards and push the Rotolight (face down) into the centre of the filter holder.



To turn the unit on, simply press the switch in the front of the Rotolight RL48-B.

How to mount Rotolight using the Rotolight Stand

To fit the RL48 to the stand, put the Rotolight logo through the centre hole of the RL48 and push to clip the legs into the holes of the support arm.

The RL48 can then mount onto the Rotopod or twin accessory bar.

To release, gently squeeze the legs together at the rear of the support arm.

Rotolight Stand can also mount onto tripods, suction mounts, 360° Swivels, Lighting Stands, etc.



How to mount Rotolight on your Shotgun Mic

Align the centre hole of your Rotolight over the foam windshield of your microphone and carefully slide the Rotolight over the foam windshield.



To remove, pinch the back of the microphone foam windshield with your left hand and with your right hand carefully slide the Rotolight off the mic to the front.

Colour Temperature Filters

Colour temperature describes the colours for use in a range of lighting situations; measured in units called degrees kelvin (K).

As a general rule, in order to get the best looking results on your video, you want to match the colour of the light in the Rotolight RL48 to the ambient colour of the lighting in the room or setting in which you're filming. For example, if you are shooting outdoors or with daylight coming through the window, you should leave the Rotolight without colour filters as these are the conditions the RL48 is calibrated to. If you are shooting in a room with warmer tungsten lighting (known as 3200 kelvin) then use either the mixed or tungsten filters to achieve the closest match. Refer to the filter guide found inside the light for which filter to use in a given setting, and the filter number can be found marked on the filter.



CFLs & Fluorescent

2700°K – 6500°K

Calibrated Studio Tungsten Light

3200°K

Halogen

3000°K

Incandescent

2700°K

Overcast Sky 6500°K – 7500°K

An overcast sky casts a bluish light measuring approximately 6,500 to 7,500 degrees Kelvin.

Calibrated Studio Daylight

5600°K

Sunlight at Midday 5500°K

The whitest light of all measures approximately 5,500 degrees Kelvin.

Candle Light 2000°K

The warmest light source of all measures around 2,000 degrees Kelvin.

Measurements shown in degrees Kelvin

Using the included filters

Rotolight RL48-B ships with four special ring light filters which are stored inside the RL48 and fit into the filter holder. These are used for colour correction to accurately match your Rotolight to the ambient light, and for diffusion to soften the light and produce a more flattering output. Diffusion and skin tone filters can be combined with colour temperature filters, if needed.

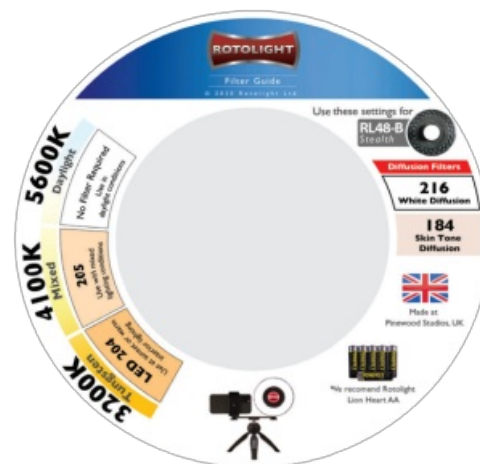
Included filters:

205 – Use with mixed lighting conditions (between daylight and tungsten)

LED 204 – Use at sunset or with warm interior lighting

184 – Diffusion with a peach warmth – ideal for lighter skin tones or to remove shine

216 – White diffusion (fitted as standard) – for softer, more flattering light



27/07/2020 13:46

Documents / Resources



[ROTOLIGHT RL48 Ultimate Vlogging Kit](#) [pdf] User Guide
RL48, Ultimate Vlogging Kit, RL48 Ultimate Vlogging Kit, Vlogging Kit