



Roth Touchline SL Wireless Control for Panel Heating Systems Installation Guide

[Home](#) » [Roth](#) » Roth Touchline SL Wireless Control for Panel Heating Systems Installation Guide 



**Roth Touchline® SL
Installation**



**Roth Touchline® SL Controller 4 ch, WiFi 230V
Living full of energy**

Contents

1 Roth Touchline® SL Controller 4 ch, WiFi 230V

2 Documents / Resources

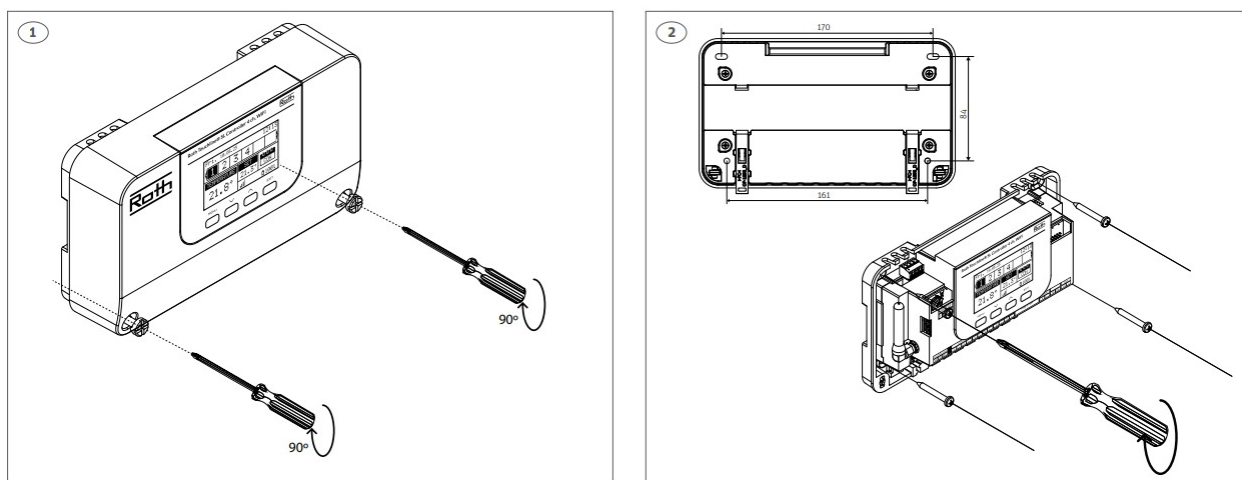
2.1 References

Roth Touchline® SL Controller 4 ch, WiFi 230V



WARNING

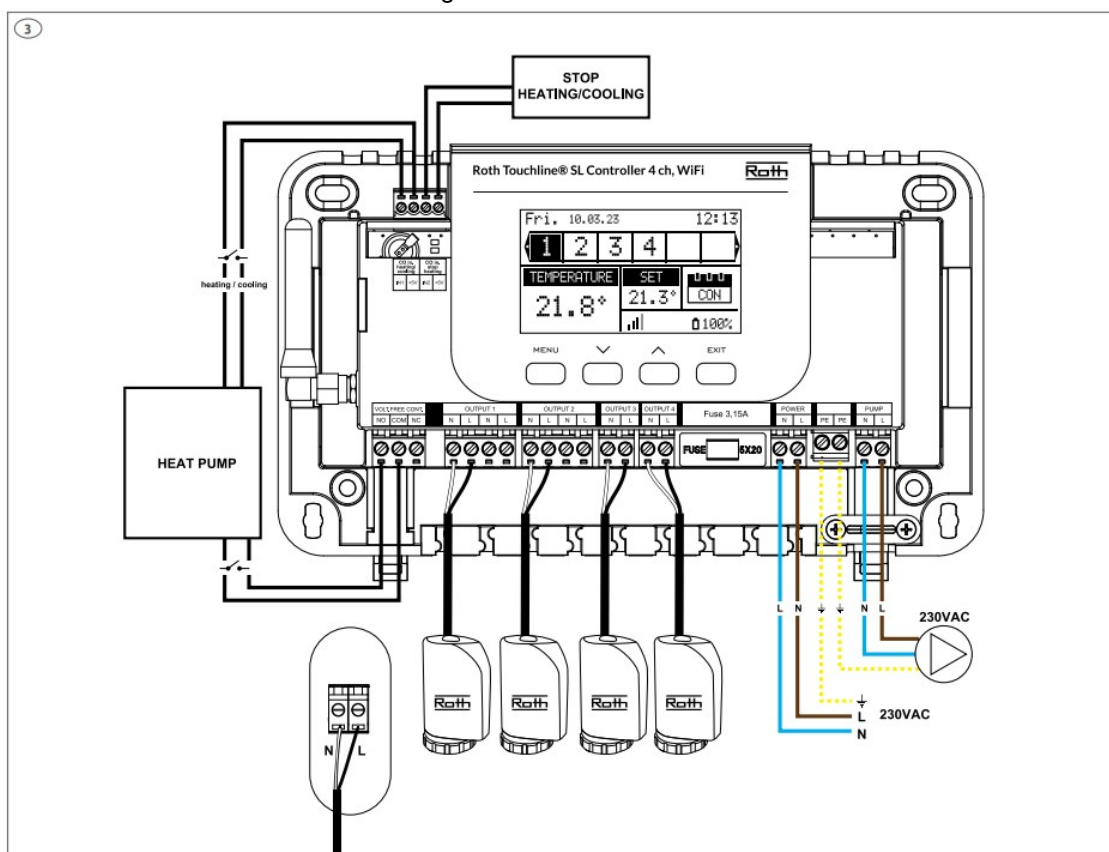
Risk of fatal electric shock from touching live connections. Before working on the controller always switch off the 230V power supply and prevent it from being accidentally switched on.



Roth Touchline® SL WiFi controller 4 Ch HVAC no. 7466397074

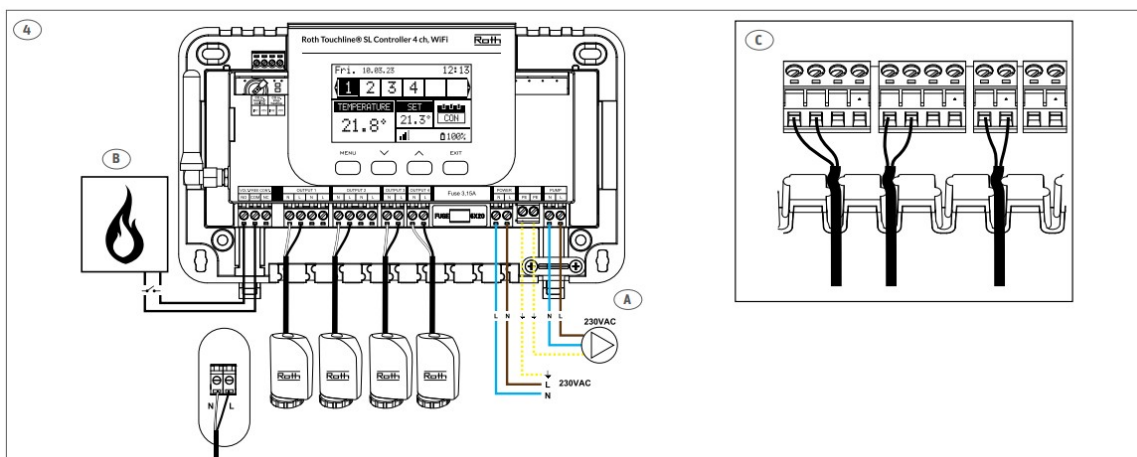
The controller must be mounted on a flat surface, max. screw diameter is 4 mm. Can also be installed using the accompanying DIN rail.

The product is a stand-alone controller meaning it can not be connected to extension modules for more channels.



If required up to 4 actuators can be connected to output 1 og 2.

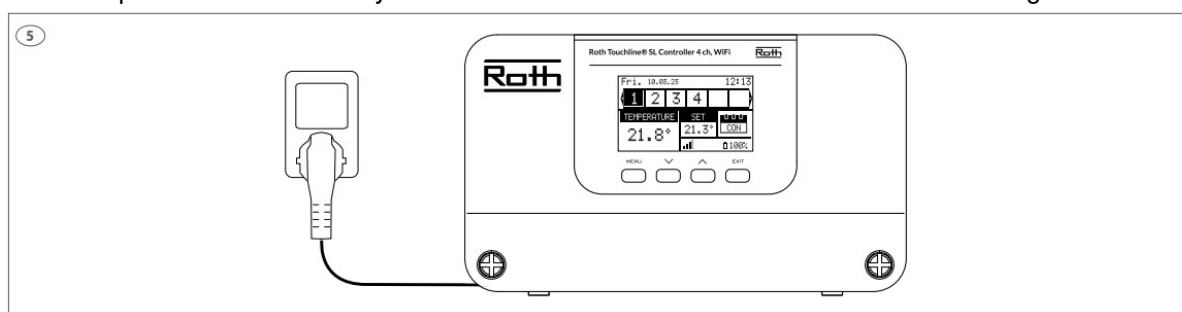
Up to 2 actuators can be connected to outputs 3 and 4 (12 actuators in total on the controller) Meaning: An output with 2 terminals can all be connected with up to 4 actuators, but an output with 1 terminal can be connected with up to 2 actuators.



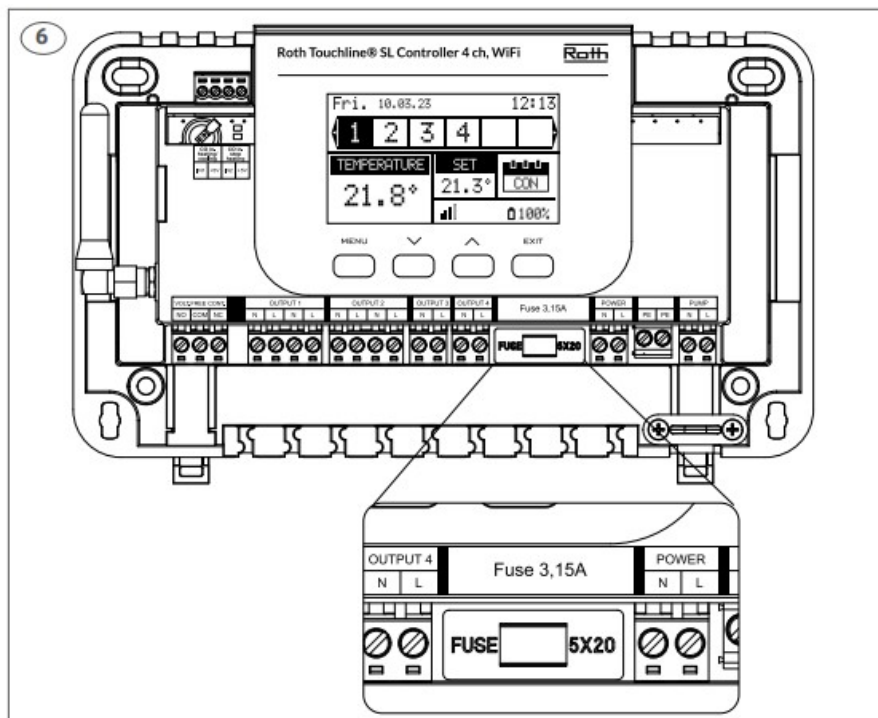
A: 230V pump output, max. load 0,5A. The pump output has integrated pumpstop.

B: Boiler/heat supply, potential free relay max. load 1A.

C: Make sure to press the cables firmly into the rubber relief with a flat tool that cannot damage the cables.



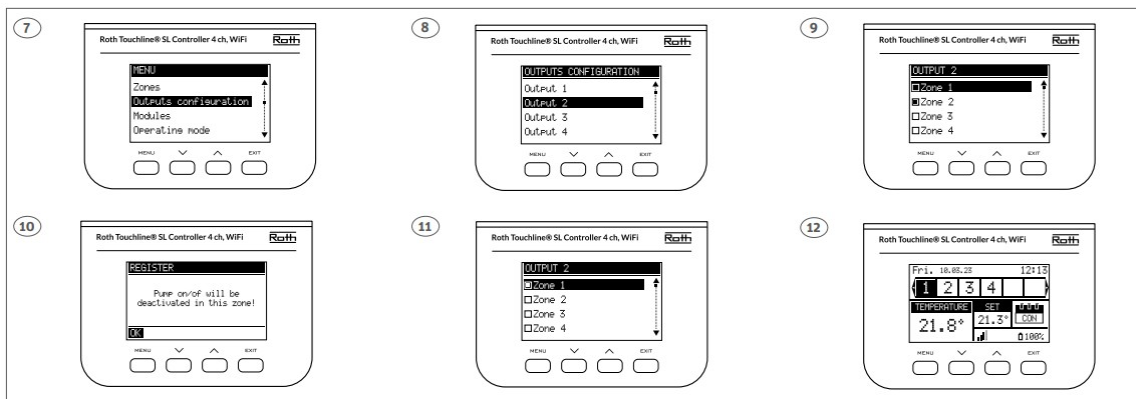
Connect to 230V power, Controller is ready for pairing of sensors. Follow the description later in this manual or please see the manual delivered with thermostat/sensor.



Glass fuse WT 3.15A (5 x 20 mm). Turn off 230V power before changing.

It is possible to connect multiple (or all) actuators outputs to one zone/thermostat.

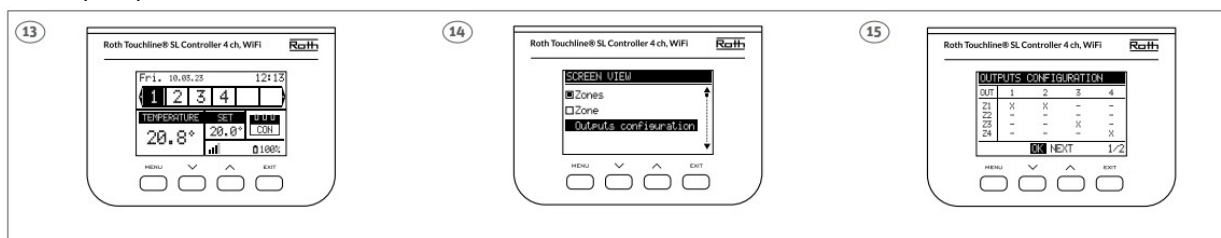
This is done in the menu "Output configuration". By default output 1 is dedicated to zone 1, output 2 to zone 2 etc.



Press the MENU button on the controller and follow the steps 7 – 12. In this example output 2 is moved from zone 2 to zone 1.

Zone 1 will now control both output 1 and output 2.

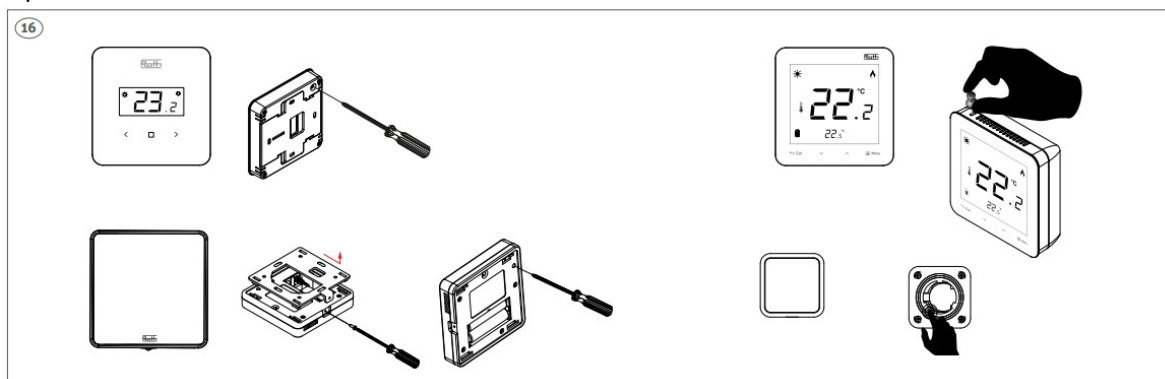
The information “Pump on/off will be deactivated in this zone” means that a heat-call on zone 2 no longer will activate the pump.



You can get an overview of the output configuration if you press EXIT from the main screen and choose “Output configuration”. Here you can see that output (OUT) 1 and 2 are connected to zone 1 (Z1).

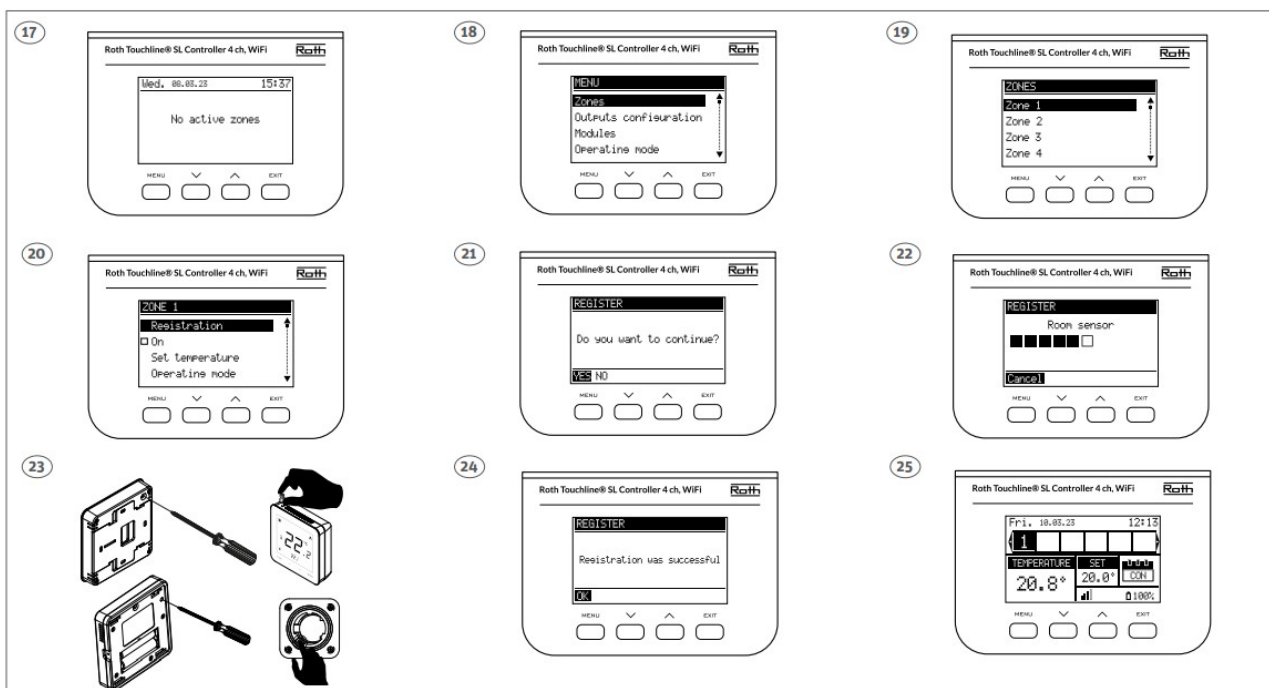
Pairing registering of thermostat/sensor to a zone on the Controller.

See the specific manuals delivered with thermostats and sensors.



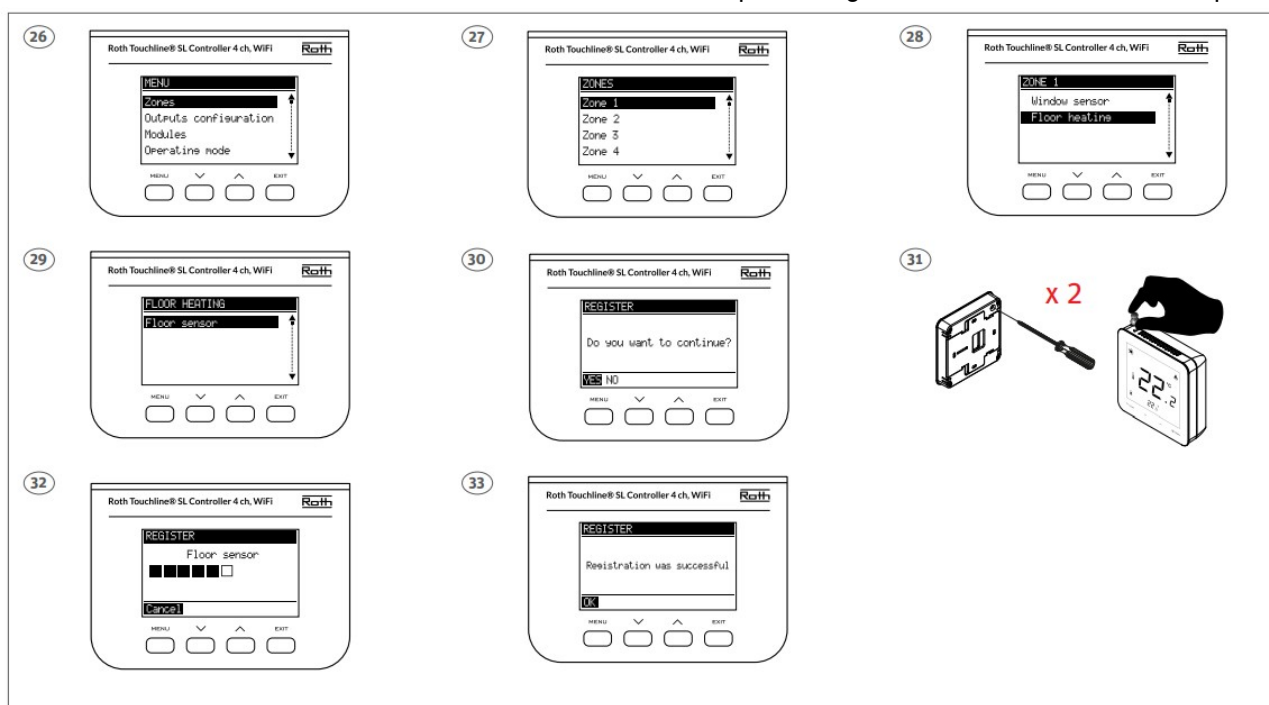
Above you can see the placement of pairing/registration button on different thermostats/sensors.

Attention! Do not touch the front of thermostats with touchbuttons while pressing the pairing button, it can lead to bad or failing functionality of the touch buttons.



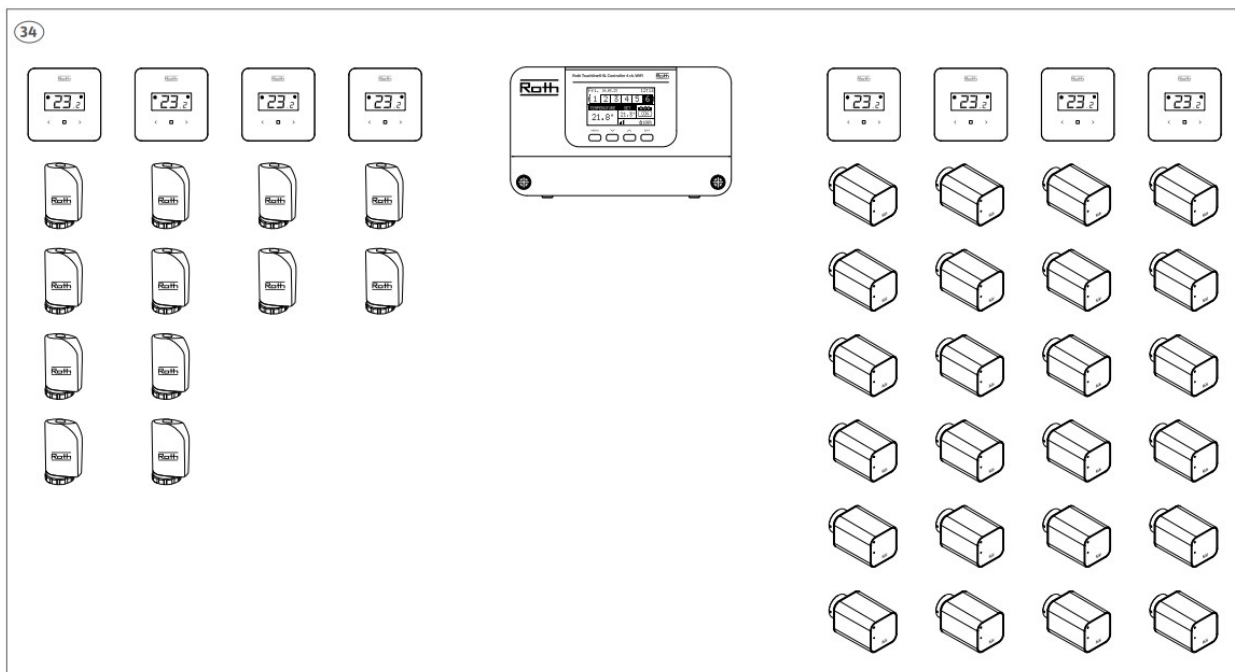
Follow the steps 17 – 25 for pairing/registering the thermostat/sensor to a zone/channel. Finish by pushing MENU button and push EXIT several times until start screen is shown.

If the thermostat has a floor sensor connected, this must also be paired/registered as shown below in step 26 – 33.

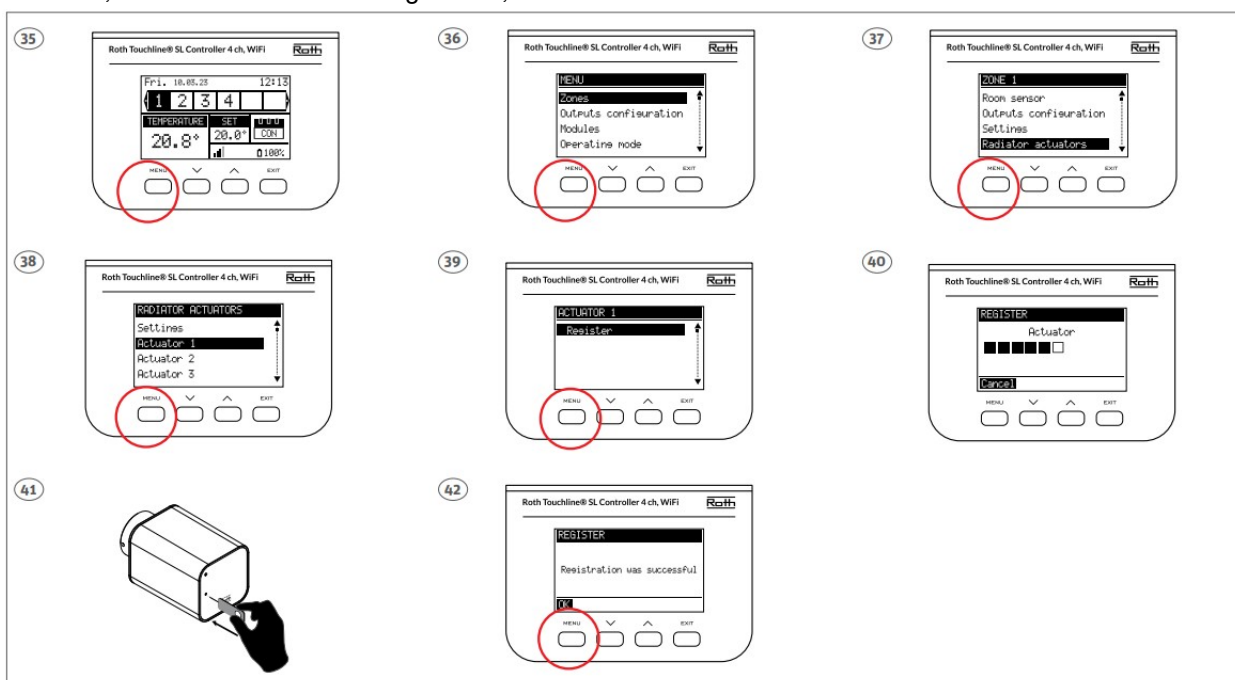


For further information about settings and use of thermostats and sensors we refer to the manuals delivered together with them.

4 thermostats can be used to control floor heating (channel 1-4). In addition to this, 4 more thermostats can be used to control Roth Touchline® SL radiator actuators (channel 5-8). A thermostat can control up to 6 radiator actuators at the same time as floor heating. This is useful if both floor heating and radiator are installed in the same room. Below is an example with floor heating and radiators.



Registration of the actuator for the Roth Touchline® SL controller. Before you can register an actuator for a channel/zone, a thermostat must be registered, see the instructions for the thermostat.



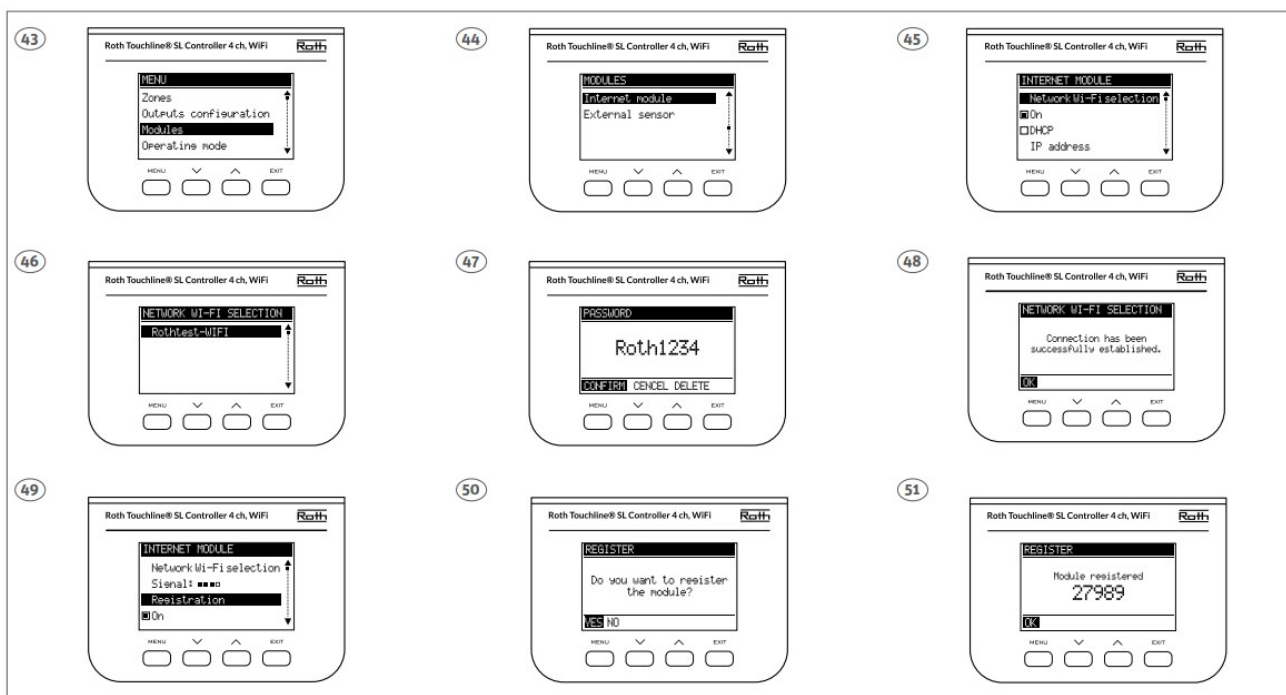
Register an actuator for a channel on the control unit

Follow steps 35 to 42 and press the sign-up button (use the included tool) shown as step 41. Correct short pressing of the registration button is signaled by a short blink of the LED on the actuator, then, if the registration is successful, two short blinks of the LED will occur. When the registration is unsuccessful, the LED will light on for about two seconds.

Finish by pressing Menu and then press Exit repeatedly until default view.

Up to 6 actuators can be registered for each channel/zone.

All channels can be operated from the Roth Touchline® SL app if the controller is connected to the internet via the built-in WiFi module.



43. Select the menu “Modules”, confirm with “Menu”.

44. Select the menu “Internet module”, Confirm with “Menu”

45. Select the menu “Network WiFi selection”, confirm with “Menu”.

46. Choose the WiFi network you want to connect to, confirm with “Menu”.

47. Enter the password using the up/down arrow, confirm with “Menu” to move on to the next character. When the entire password has been entered, press “Menu” twice, “Confirm” by pressing “Menu”.

48. The controller confirms connection to the WiFi network.

49. Choose “Registration”, confirm with “Menu”.

50. Confirm “YES” with “Menu”.

51. Registration ongoing.

The display confirms and shows a pairing code, confirm with “Menu”.

Attention! Write down the registration code to connect the system to the Roth Touchline® SL-app. The code is only valid for an hour but you can always generate it again doing the registration once more.

If you want to be able to control your Roth Touchline® SL heating system, you need to create an account on the Roth Touchline® SL app.



52. Download the Roth app “Roth Touchline® SL” in the App Store or in Google Play. Tap the pencil to create a new user.

53. Enter user information, finish with “Register”.

54. The app is now ready to be paired with a controller.

Register a new controller unit on the app.



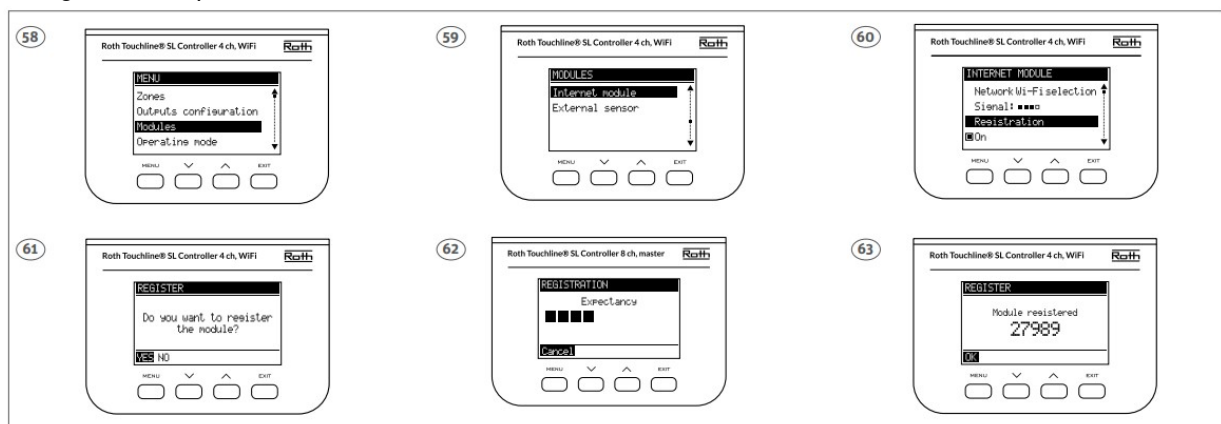
55. To be able to connect to a controller unit it must be named and registered with a code.

56. Enter all information and finish with "Register".

57. The app will now update information in the controller unit.

Press "OK" and the app is ready for use.

If you didn't write down the code when registering the WiFi module for the Control Unit you can get the code again by following below steps.



To retrieve the registration code, press "Menu".

58. Select the menu "Modules", confirm with "Menu".

59. Select the menu "Internet module", Confirm with "Menu".

60. Select "Registration", confirm with "Menu".

61. Confirm "YES" with "Menu".

62+63. Registration code will be shown shortly after.

System requirements for router

> 2.4 GHz b/g/n on the 20 MHz band (up to 150 mbit)

> Max WPA2 security

> Ports TCP port 2000, TCP port 2001, TCP port 80 must be open.



Roth Touchline® SL

QR

<https://rebrand.ly/ptvf6xe>

ROTH UK Ltd


Enterprise House

Barracks Road

Stourport-On-Severn

Worcestershire
DY13 9RW
Phone +44 (0) 1905 453424
E-Mail enquiries@roth-uk.com
technical@roth-uk.com
orders@roth-uk.com
accounts@roth-uk.com
roth-uk.com
Installation Roth Touchline® SL
Controller 4ch, W i F i 230V_20 231212

Documents / Resources

	Roth Touchline SL Wireless Control for Panel Heating Systems [pdf] Installation Guide Touchline SL, Touchline SL Wireless Control for Panel Heating Systems, Wireless Control for Panel Heating Systems, Control for Panel Heating Systems, Panel Heating Systems, Heating Systems, Systems
---	--

References

- [Frontpage | Norge.no](#)
- [Hej! Welcome to sweden.se – the official website of Sweden](#)
- [UK.COM](#)
- [User Manual](#)

Manuals+, Privacy Policy

This website is an independent publication and is neither affiliated with nor endorsed by any of the trademark owners. The "Bluetooth®" word mark and logos are registered trademarks owned by Bluetooth SIG, Inc. The "Wi-Fi®" word mark and logos are registered trademarks owned by the Wi-Fi Alliance. Any use of these marks on this website does not imply any affiliation with or endorsement.