



Roth Touchline SL Sensor Mini Energylogic Projectline Wireless Control Installation Guide

[Home](#) » [Roth](#) » Roth Touchline SL Sensor Mini Energylogic Projectline Wireless Control Installation Guide 

Contents

- [1 Roth Touchline SL Sensor Mini Energylogic Projectline Wireless Control](#)
- [2 Product Information](#)
- [3 Product Usage Instructions](#)
- [4 Overview](#)
- [5 Battery](#)
- [6 Usage](#)
- [7 Mounting](#)
- [8 Documents / Resources](#)
 - [8.1 References](#)
- [9 Related Posts](#)



Roth Touchline SL Sensor Mini Energylogic Projectline Wireless Control



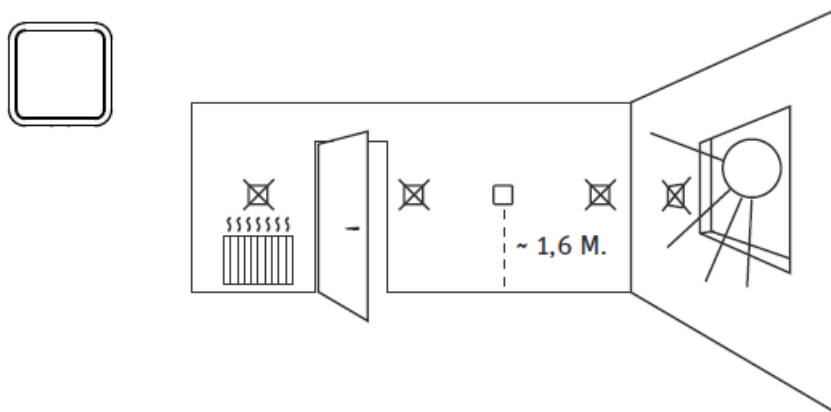
Product Information

The product is a sensor that needs a CR2032 battery to function. The sensor needs to be paired/registered to a zone (channel) for operation. The sensor can be connected to the Controller (pump, actuators, and optionally potential-free relay) before start-up. The lid of the sensor can be easily mounted and turned with a screwdriver or coin. The product has different operation modes such as Global Schedule 4, Global Schedule 5, Constant Temperature, and Time Limitation. The product is manufactured by ROTH UK Ltd.

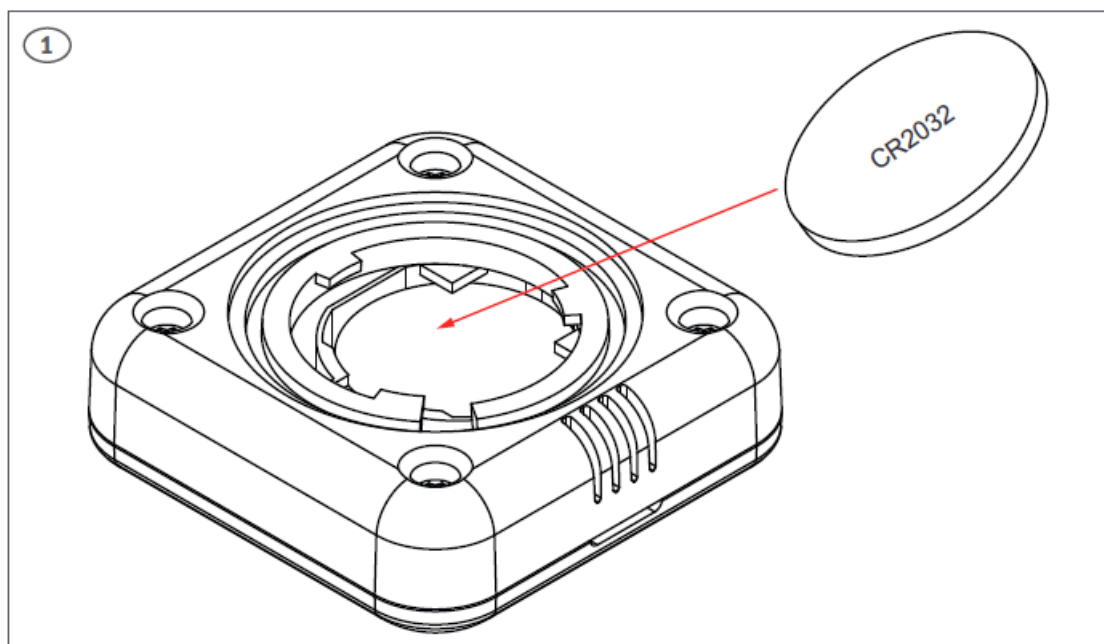
Product Usage Instructions

1. Insert the CR2032 battery as shown in the drawing.
2. Pair/register the sensor to a zone (channel) by following steps 2 to 7 and pressing the pairing button as shown in step 8. Finish with Menu and press Exit several times until the standard view appears.
3. Connect all the necessary connections to the Controller (pump, actuators, and optionally potential-free relay) before starting up.
4. Mount the lid of the sensor and turn it lightly (2-3mm) with a screwdriver or coin.
5. The product has different operation modes such as Global Schedule 4, Global Schedule 5, Constant Temperature, and Time Limitation. To set the operation mode, refer to steps 20-25 in the manual.

Overview



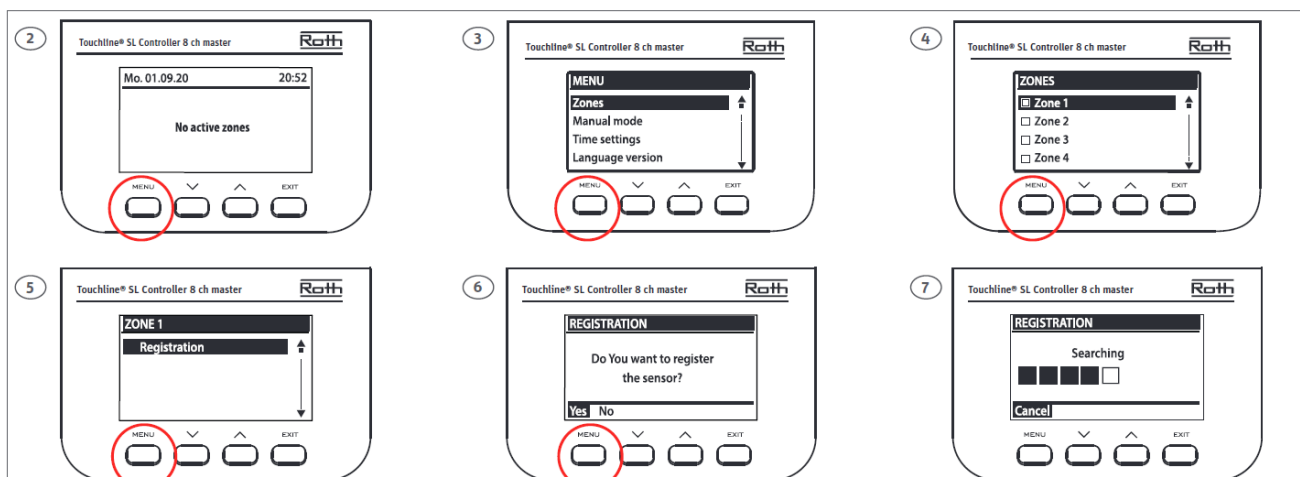
Battery



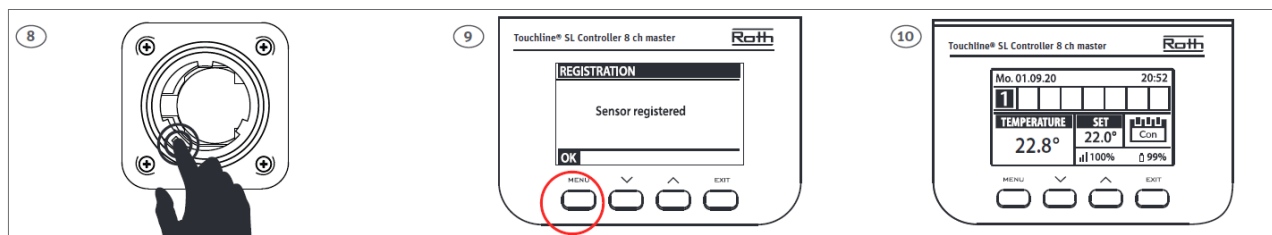
Insert battery (CR2032 included) as shown on the drawing

Usage

- The sensor can be connected to all Controllers in the Touchline® SL series. Pairing/registering is made the same way on all Controllers using the same buttons. On the pictures the panel of the Touchline® SL Controller, master is shown



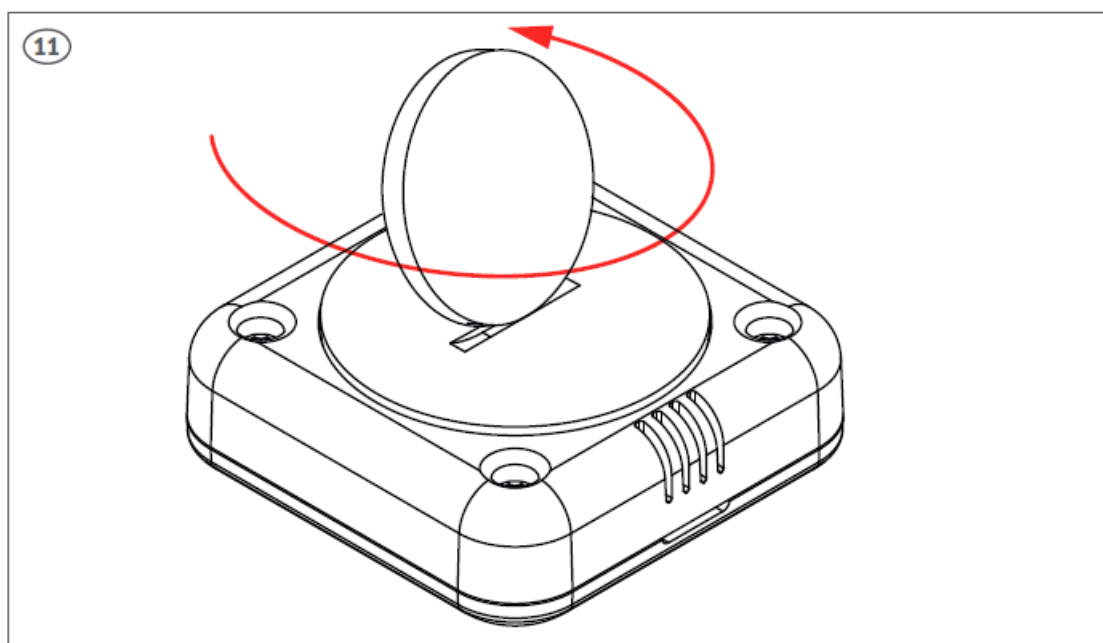
- Pairing/registering the sensor to a zone (channel). Follow step 2 to 7 and press pairing button as shown on step 8. Finish with Menu and after that press several times on Exit until standard view. All connections must be made to the Controller (pump, actuators and optionally potential free relay) before start-up. Please see controller manual for details.



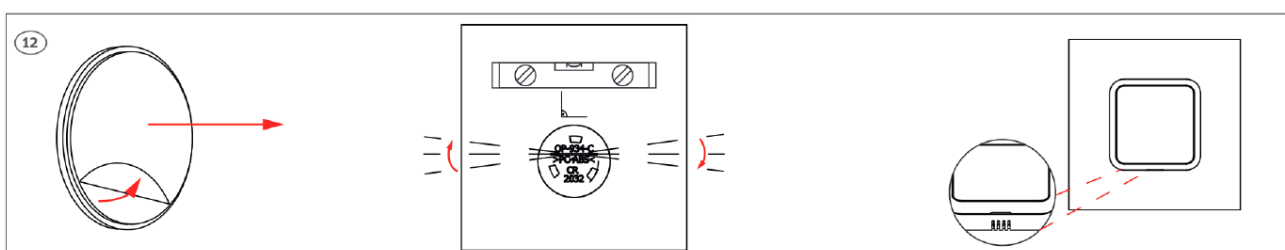
- Once the sensor is connected to the Zone/Channel, the overview shows: – Temperatures on the thermostat (setpoint 22,0°C, actual 25,0°C), battery (99%), signal strength (100% – must be at least 10%) and mode of operation (CON = continuously). For more info on the display, see controller manual. Repeat registration for other sensors, by choosing one of the other zones (2 to 8) until required number of sensors are connected. Attention! If a sensor is paired to the wrong zone, do not delete the sensor. Pair the sensor to the correct/new zone and the old pairing will be deleted.

Mounting

- Mount the lid and turn lightly (2 -3 mm) with a screwdriver or coin



- First apply the self-adhesive tape (included) on the sensor, then the sensor on the wall. The ventilation grooves must point downwards.

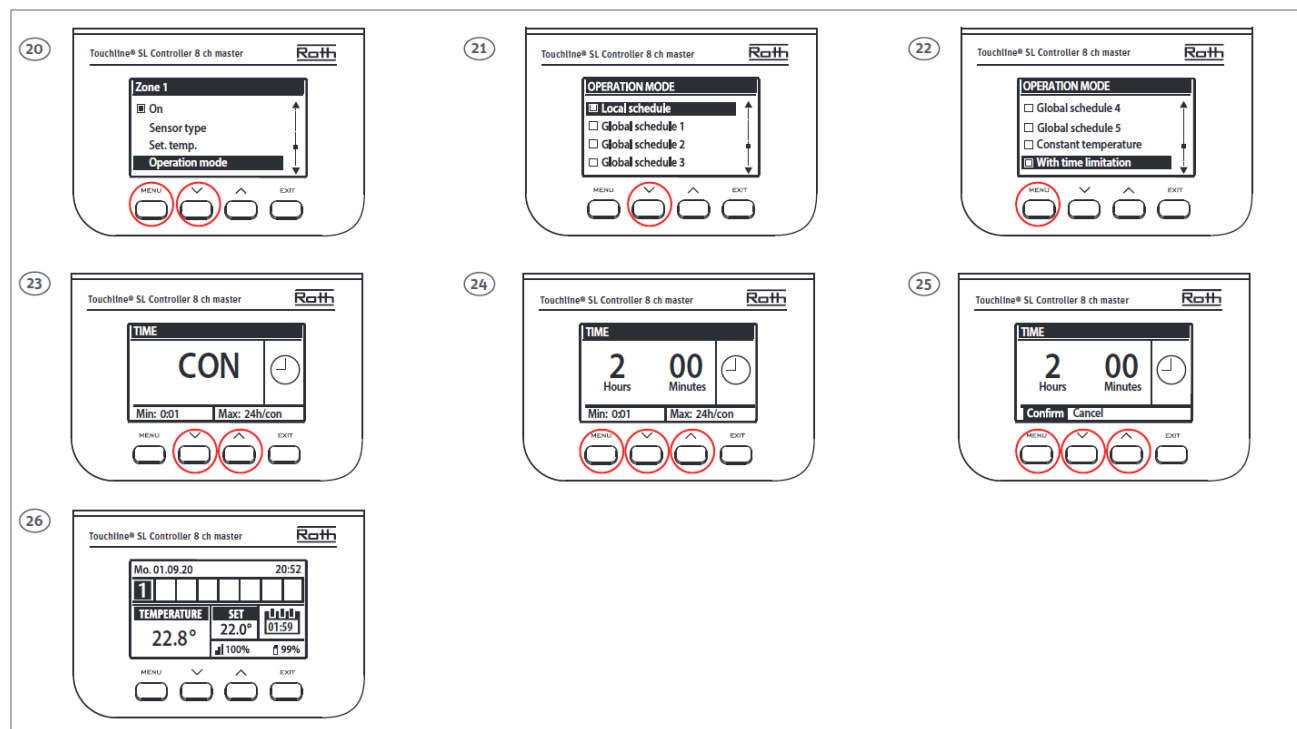


- Settings for temperature and mode must be done on the controller's display. For constant temperature settings

follow the steps 13 -19 below.



- If a different mode than constant temperature is wanted, for example time schedule or time limitation, then follow the below steps below 20 – 26 below. For more information about time schedules, we refer to the online manual for Roth Touchline® SL Controller – Master



- Picture 26, now shows the new setpoint 22,0°C and the remaining time for this temperature (01:59). When the time expires the system automatically returns to the original selected constant temperature (19°C).

ROTH UK Ltd 1a Berkeley Business Park Wainwright Road Worcester WR4 9FA

Phone +44 (0) 1905 453424

E-Mail enquiries@roth-uk.com

technical@roth-uk.com

orders@roth-uk.com

accounts@roth-uk.com

roth-uk.com

ROTH DANMARK A/S
Centervej 5 3600 Frederikssund Tlf. +45 4738 0121
E-mail: service@roth-danmark.dk
roth-danmark.dk

ROTH SVERIGE AB Höjdrodergatan 22 212 39 Malmö
Tel. +46 40534090
Fax +46 40534099
E-mail: service@roth-sverige.se
roth-sverige.se

Installation Roth Touchline® SL sensor mini_20220401

Roth Touchline® SL QR



Documents / Resources

	<p>Roth Touchline SL Sensor Mini Energylogic Projectline Wireless Control [pdf] Installation Guide</p> <p>Touchline SL Sensor Mini Energylogic Projectline Wireless Control, Touchline SL Sensor Mini, Energylogic Projectline Wireless Control, Projectline Wireless Control</p>
---	---

References

- [Frontpage | Norge.no](#)
- [Roth Sverige - Roth Sweden](#)
- [Hej! Welcome to Sweden | sweden.se – the official website of Sweden](#)
- [UK.COM](#)