

Roth Touchline SL Repeater Installation Guide

Contents

- [1 Touchline SL Repeater](#)
- [2 Documents / Resources](#)
- [2.1 References](#)

Touchline SL Repeater

Product Information: Product Name: Roth Minishunt Plus Product

Type: Repeater for thermostats and control units Model Number: Not provided in the given text Product Usage Instructions: 1.

Installation: – Connect the Repeater to the power supply. – The power indicator (A) will light up. – Press the registration button (E) on the Repeater. – The registration indicator out (D) will be permanently on, and the registration indicator in (C) will start flashing. 2. Registering the Repeater: – Press the registration button on the backside of the Room thermostat or Floor sensor. – The registration indicator in (C) will change to be permanently on, and the registration indicator out (D) will start flashing. 3.

Registering Repeater with Room Thermostat: – If installing a Room thermostat, follow the registration process on the Controller to register the Repeater to the same zone as the Room thermostat was registered to. 4. Registering Repeater with Floor Sensor: – If installing a Floor sensor, follow the registration process on the Controller to register the Repeater to the zone. 5. Registration and Configuration of Repeater between Master and Expansion Module: – In a system where a repeater is needed between the master and one or more expansion modules, configure the master unit to the repeater before signing up for the expansion module. – This ensures proper communication between the two units. Note: The given text does not provide specific information about additional features or functions of the product. For more detailed instructions and information, please refer to the complete user manual.





Roth Touchline® SL

Installation

Roth Touchline® SL repeater

Living full of energy

Roth Touchline® SL repeater

The Roth Touchline® SL repeater can be used for a number of Roth products, Roth Touchline® SL, Roth Touchline® PL, Roth wireless control for Minishunt Plus and Roth QuickStop Sensor 2.

The repeater is used if there is too long a distance between a transmitter and a receiver or in difficult transmitter / receiver conditions.

In a system, you can register several different units for one or more repeaters, however max. 20 units per repeater. You can mix both expansion module, thermostats, smart home components and QuickStop Sensor via one or more repeaters. Max 2 repeaters in series

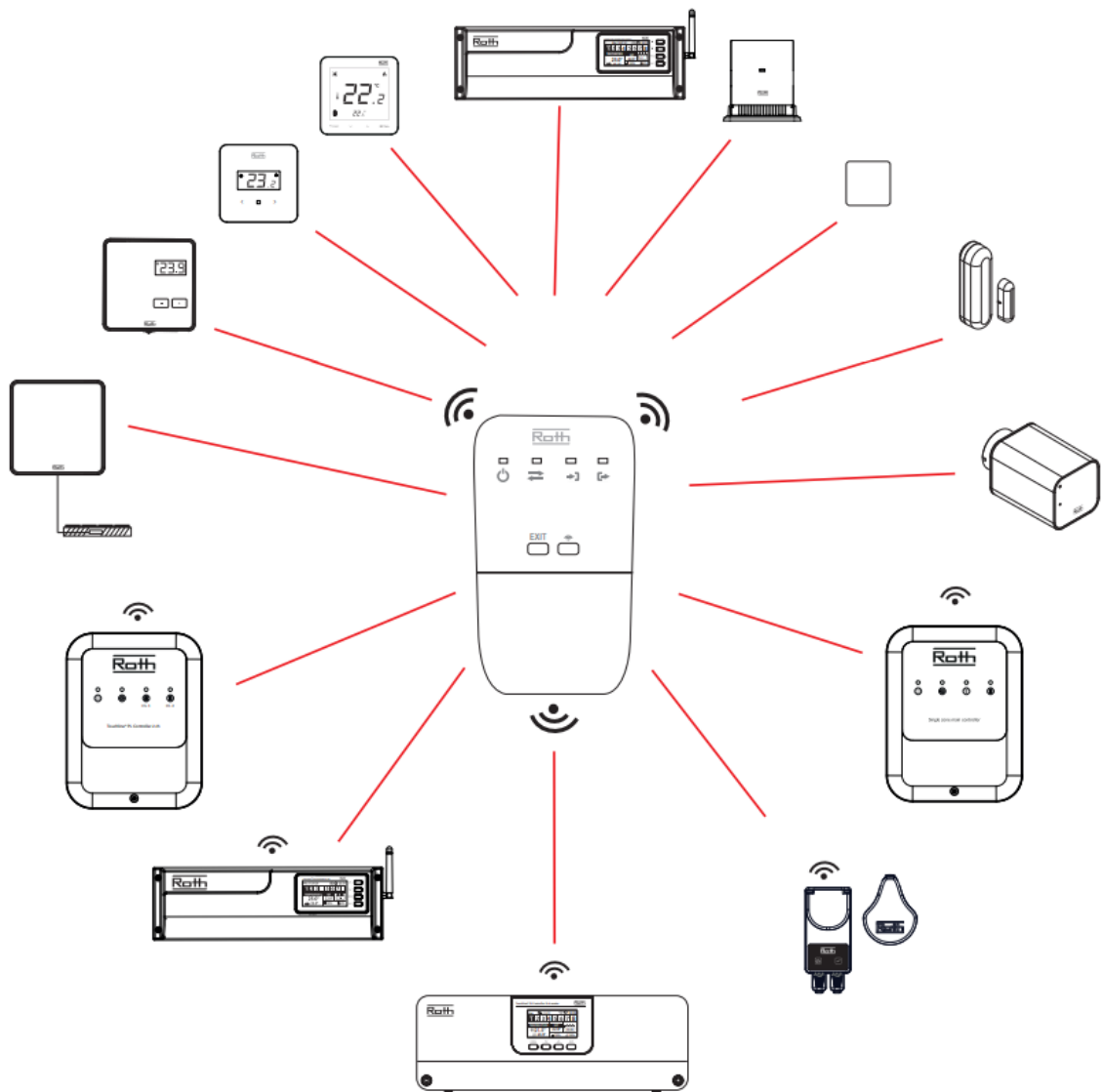
When registering a repeater, there must be a maximum of 10 meters between the receiver (control unit), the repeater and the transmitter (thermostat/sensor), after registration, place the repeater midway between the transmitter location and the receiver.

After registering the repeater, the signal strength between the repeater and the control end is shown in the display on the control unit, only Roth Touchline® SL and Roth Touchline® PL apply.

The registered room thermostat, smart home component or sensor, now only works via the repeater. Test evt. the repeater function by changing the setpoint on the room thermostat, or making the Roth QuickStop Sensor damp on the underside – diode B on the repeater will flash briefly, indicating that the signal has been received and forwarded. On the control unit you can check that the setpoint has changed and on the Roth QuickStop sensor control unit it will give a “beep” sound, light red and close the valve.

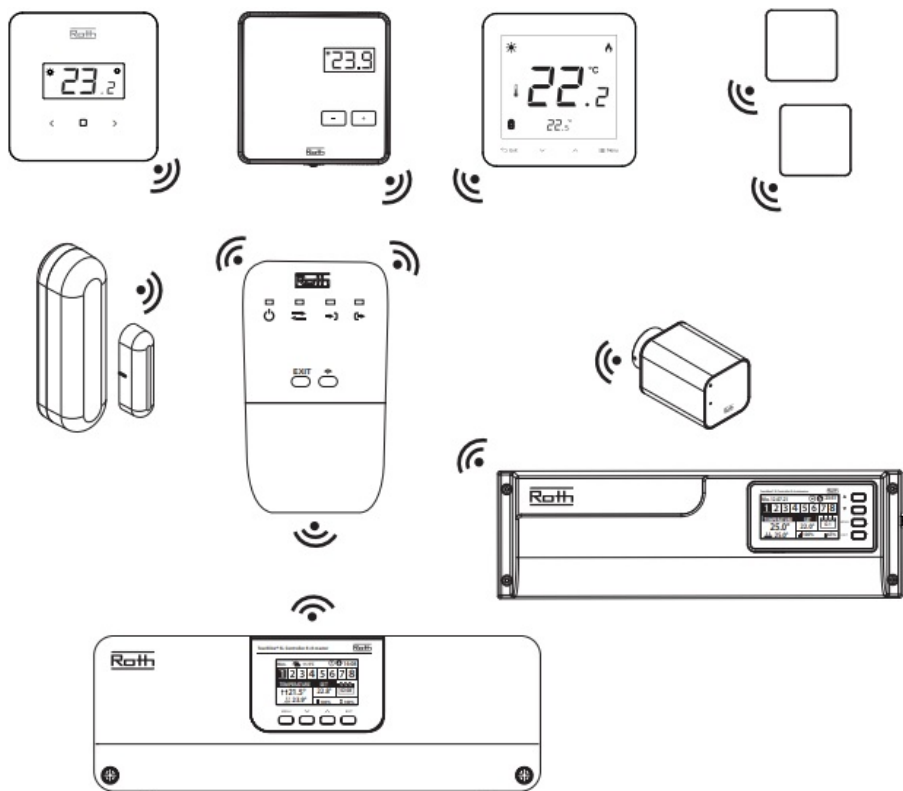


Roth Touchline® SL Repeater



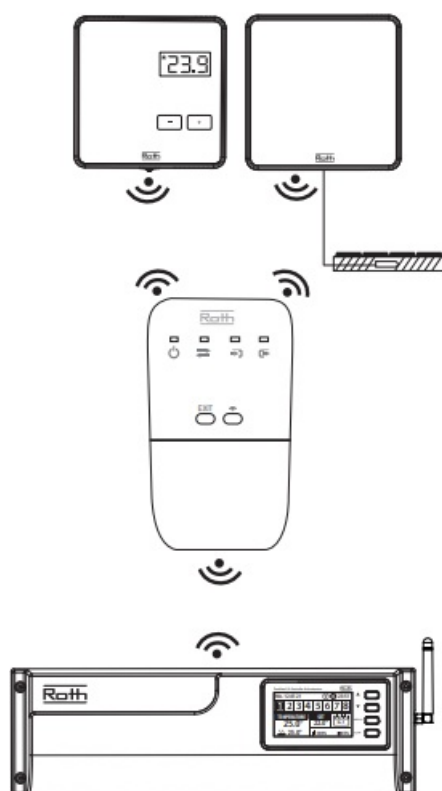
System overview

Roth Touchline® SL



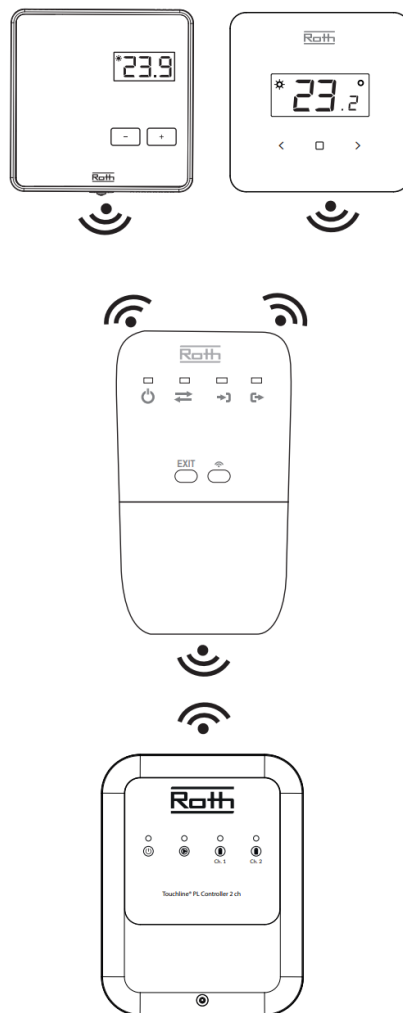
Page 5-14

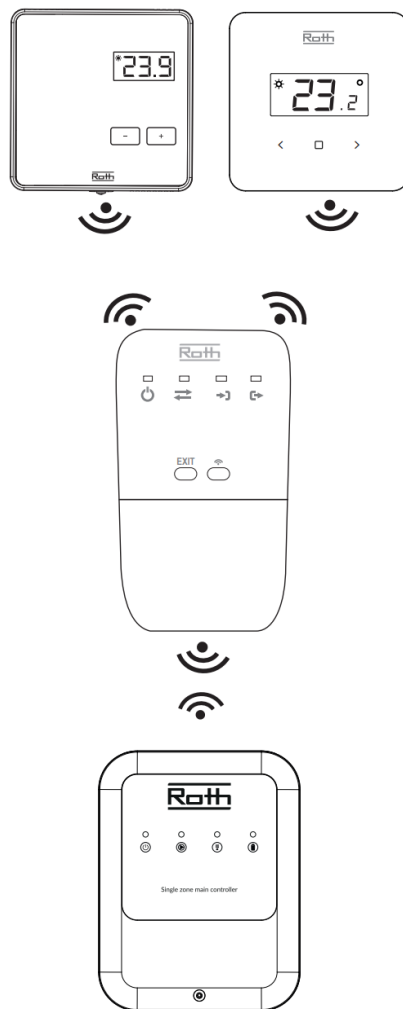
Roth Touchline® PL Controller 8 Ch



Page 15-18

Roth Touchline® PL Controller 2 Ch

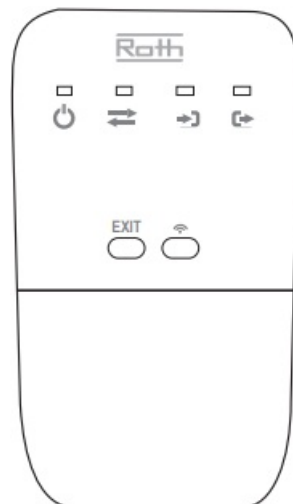






Page 21

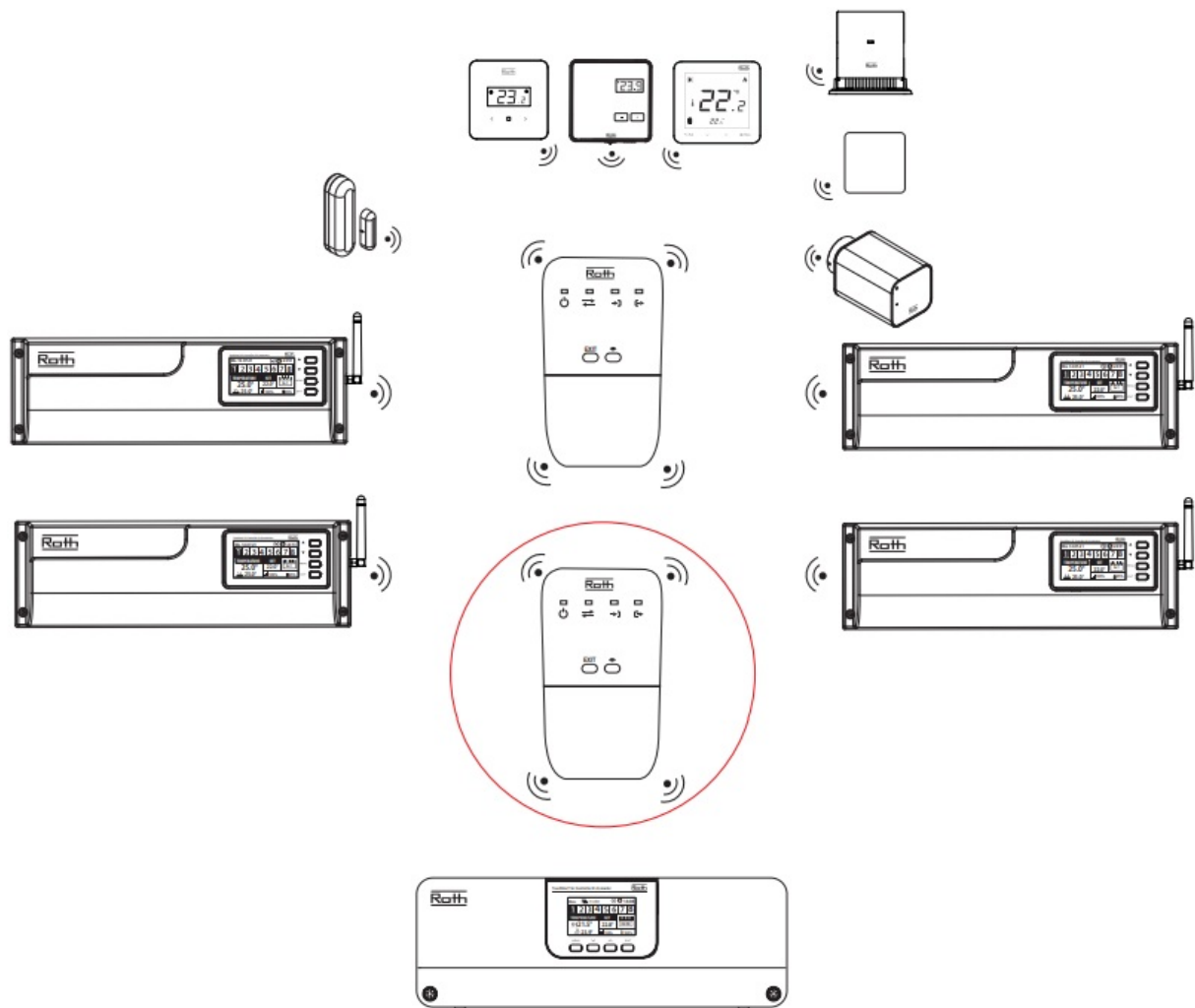
Roth Touchline® SL Repeater – restoring factory settings



Page 22

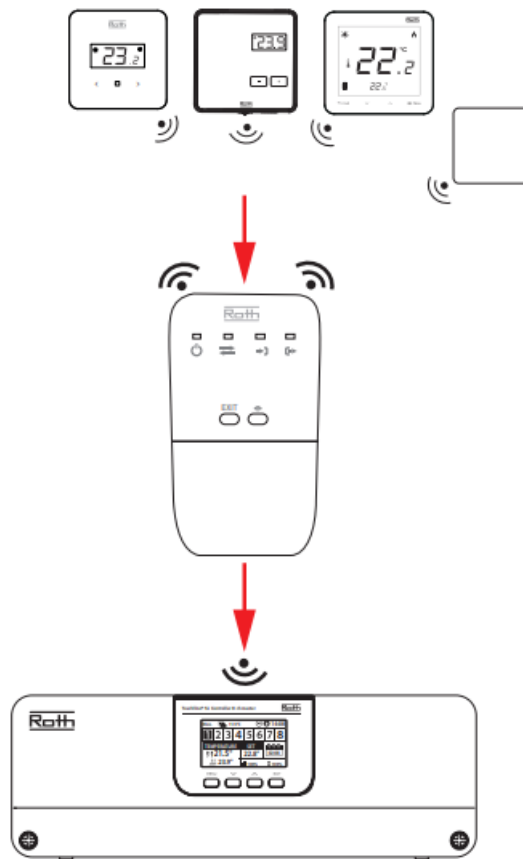
Roth Touchline® SL

(1)



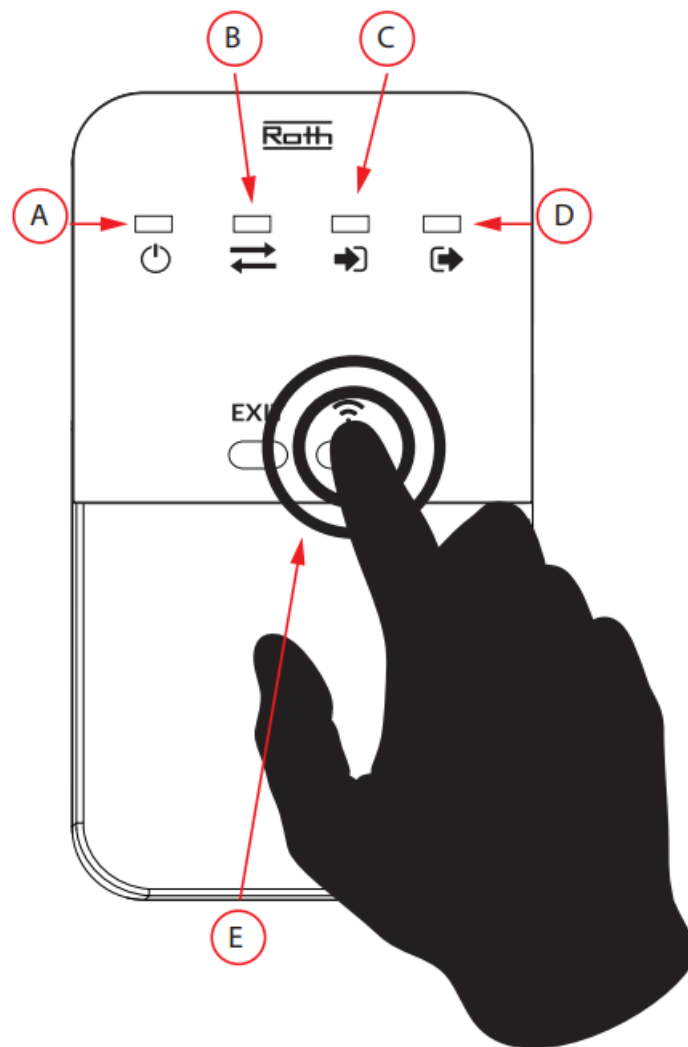
Repeater between thermostats and control units.

(2)



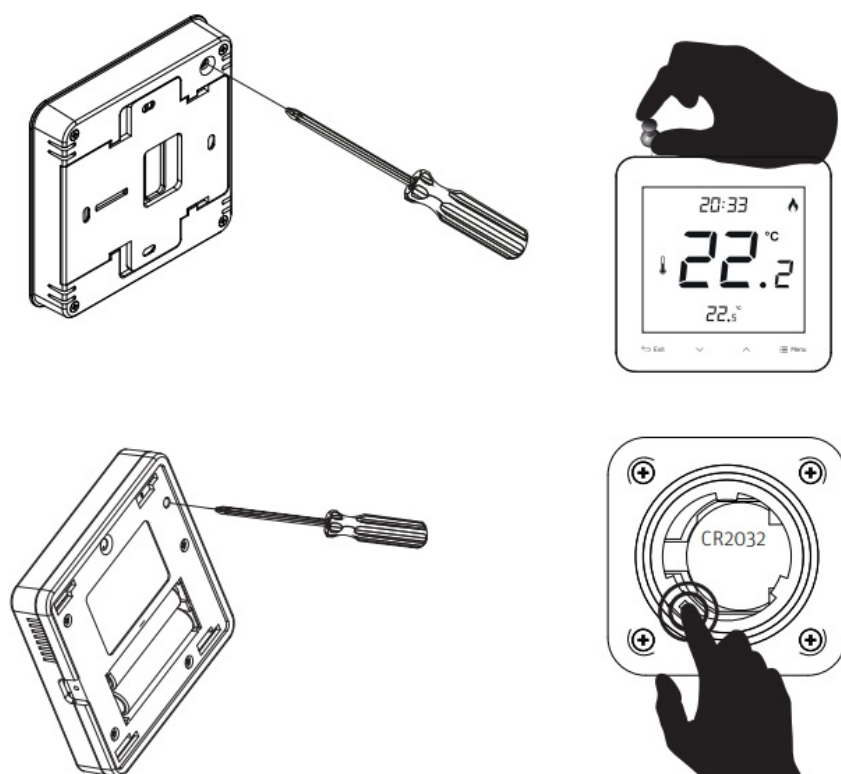
Connect the Repeater to the power supply – power indicator (A) will light up. Press the registration button (E) on the Repeater. The registration indicator out (D) will now be permanently on and the registration indicator in (C) will start flashing.

(3)



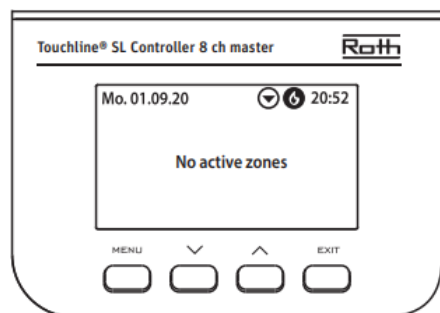
Press the registration button on the backside of the Room thermostat or Floor sensor. The registration indicator in (C) will now change to be permanently on and the registration indicator out (D) will start flashing.

(4)

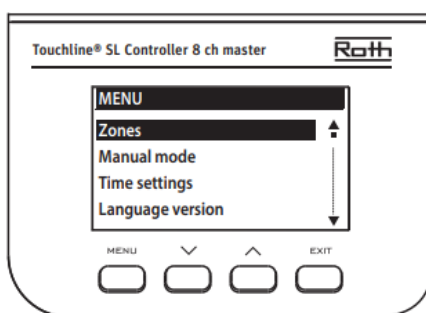


If installing a Room thermostat, follow the registration process on the Controller to register the Repeater to the same zone as the Room thermostat was registered to.

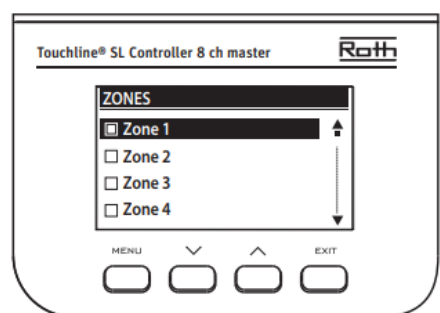
(5)



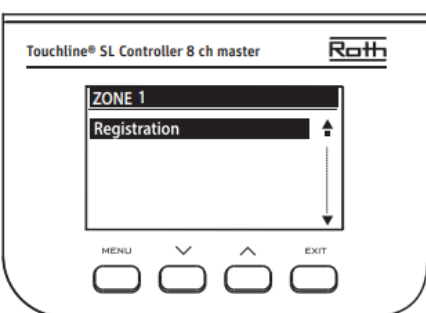
(6)



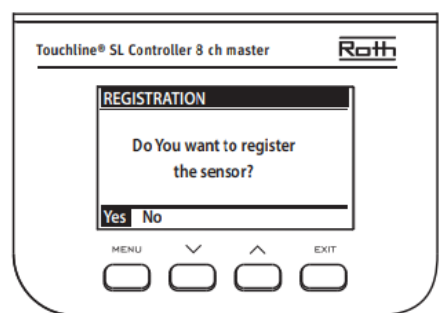
(7)



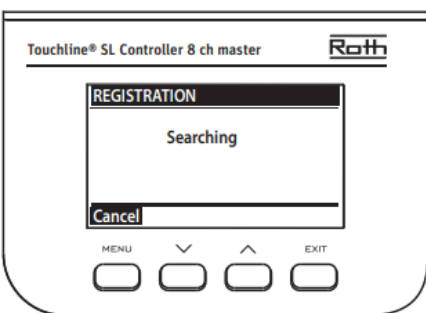
(8)



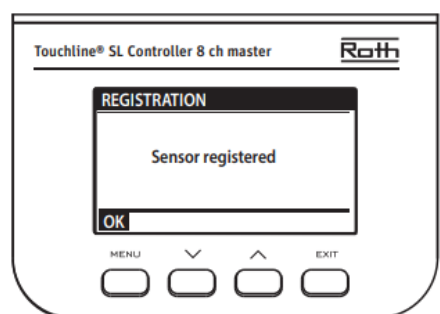
(9)



(10)



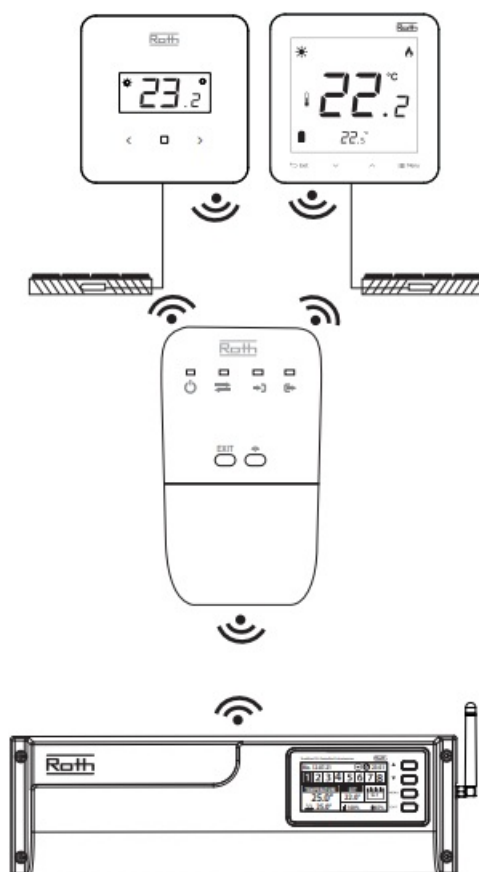
(11)



When the Repeater has been registered all indicator lights (A,B,C,D) on the repeater will flash simultaneously for 5 seconds. The Controller will display the message "Sensor registered".

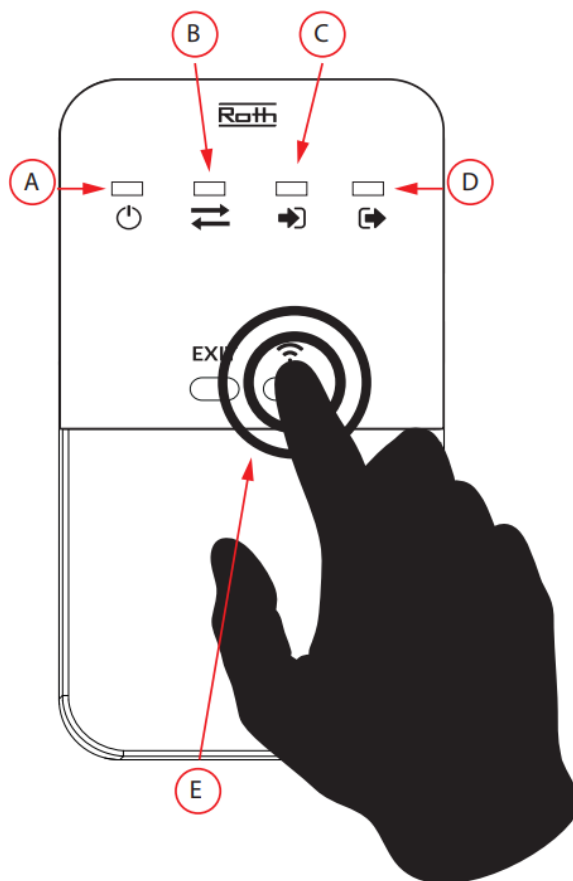
Registration of floor sensor.

(12)

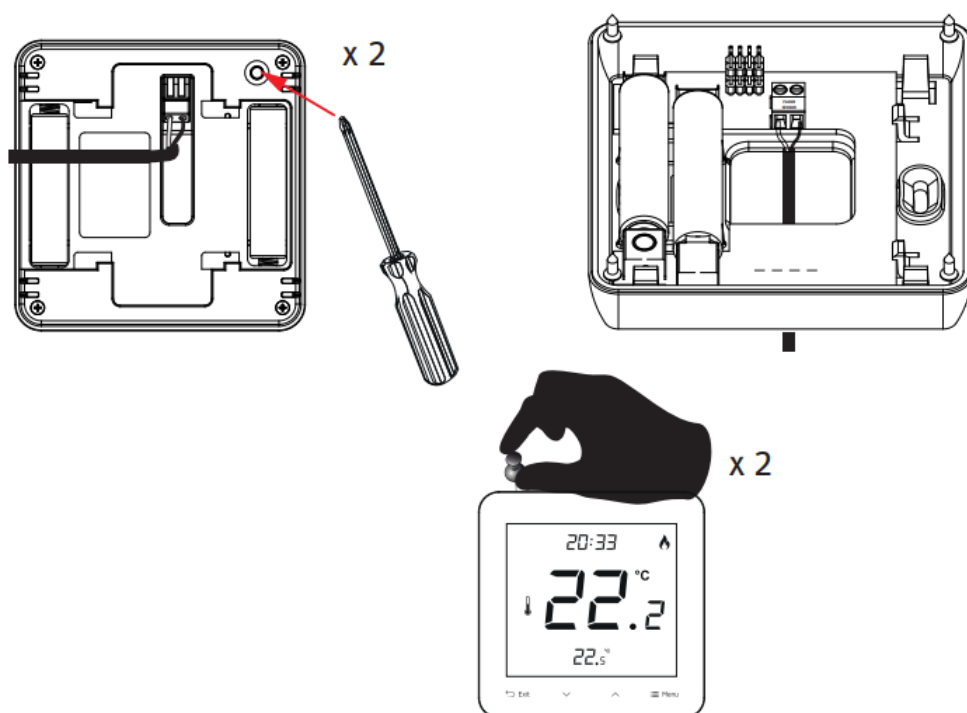


Connect the Repeater to the power supply – power indicator (A) will light up. Press the registration button (E) on the Repeater. The registration indicator out (D) will now be permanently on and the registration indicator in (C) will start flashing.

(13)



(14)



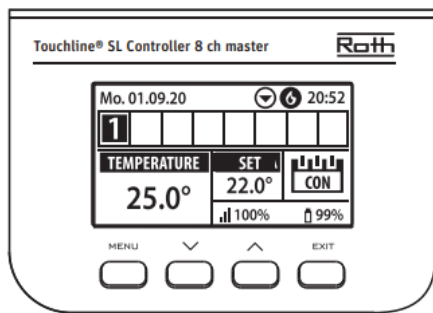
Floor sensor type “Touchline® SL room thermostat with wired floor sensor” – HVAC No. 7466397525

Check that the room thermostat is registered to the repeater before registration of floor sensors. When registering a cable floor sensor on the Standard room thermostat, the button must be pushed briefly twice. The registration indicator in (C) will now change to be permanently on and the registration indicator out (D) will start flashing.

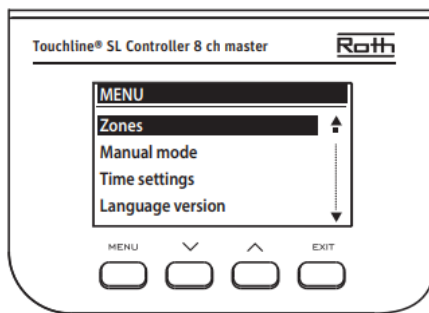
If installing a Floor sensor, follow the registration process on the Controller to register the Repeater to the zone.

(15)

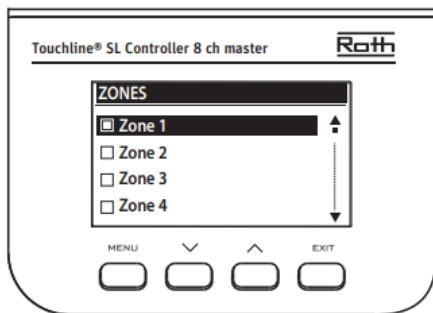
(16)



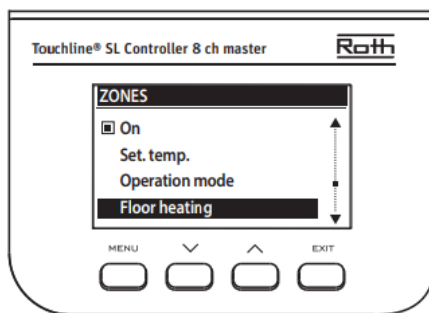
(17)



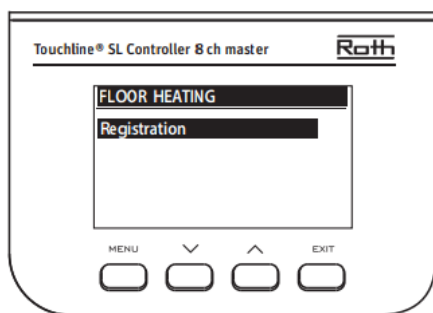
(18)



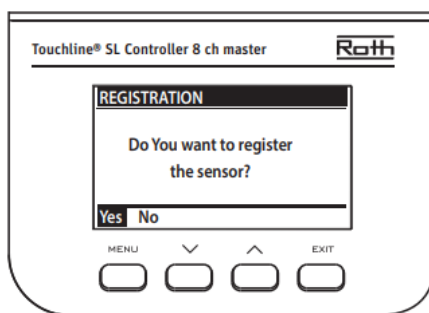
(19)



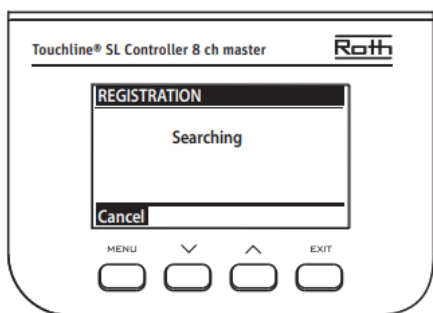
(20)



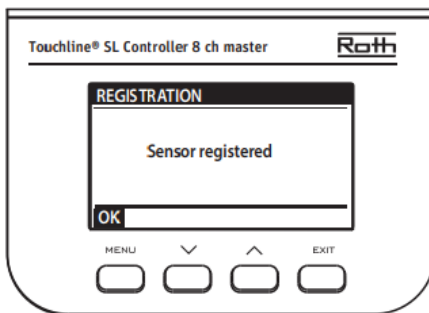
(21)



(22)

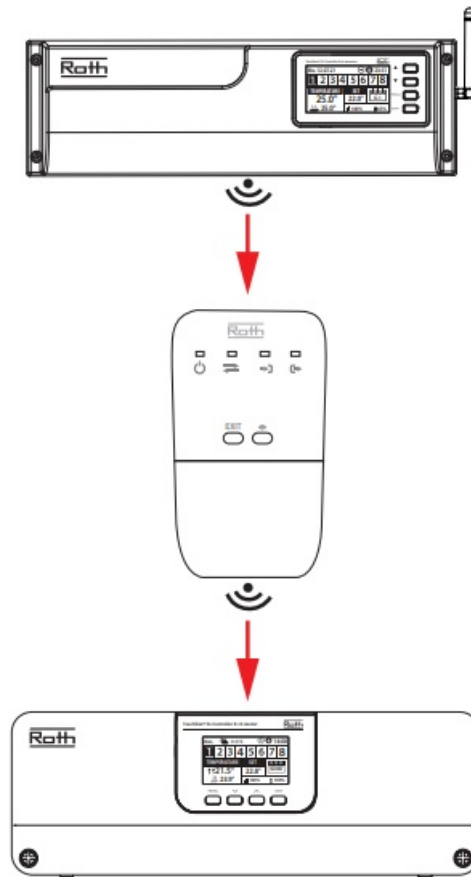


(23)



Registration and configuration of repeater between master and expansion module

In a system, one may need a repeater between the master and one or more expansion modules. It is important to configure the master unit to the repeater before signing up for the expansion module, as this will ensure that all communication is properly exchanged between the two units.



Roth underfloor heating system

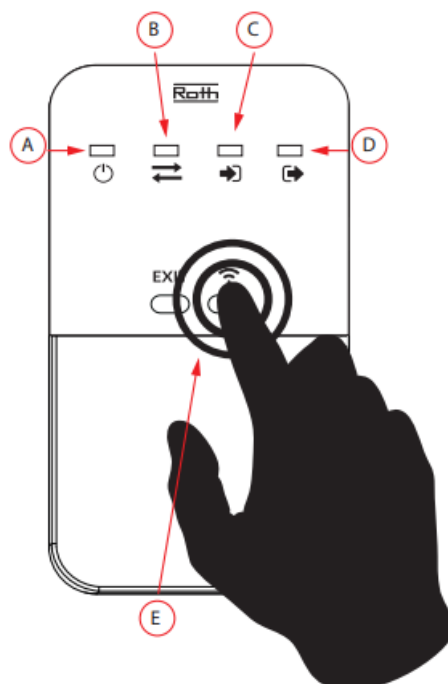
Configure the Roth Touchline® SL repeater with the Roth Touchline® SL master

Connect the repeater to 230V voltage, the power diode will light up (A).

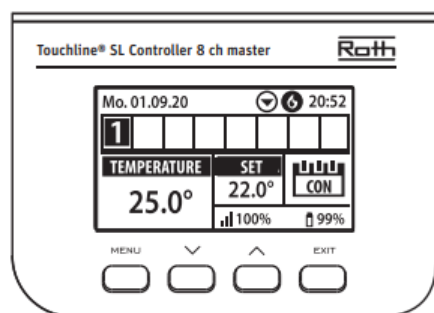
Press and hold the registration button (E) on the repeater until the LEDs run from side to side.

On the master select "Fitters menu", Repeater Configuration, Do you want to configure? Confirm with "Yes" If configuration is successful, the repeater flashes 5 times and the master confirms the setup. If several repeaters are required in extension of each other between the master and the expansion module, the above procedure must be repeated on all repeaters!

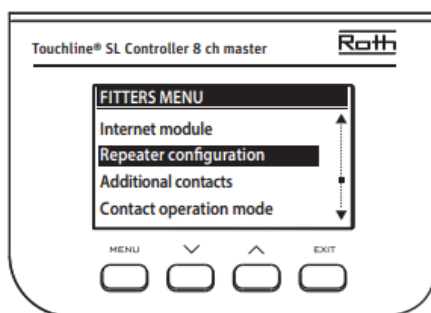
(24)



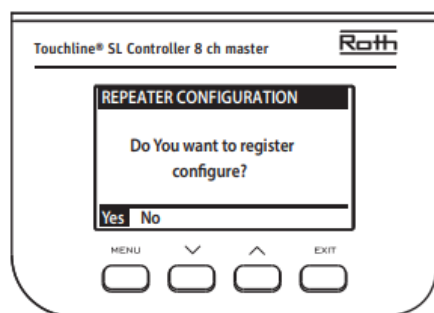
(25)



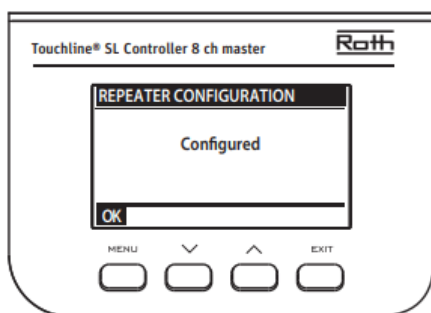
(26)



(27)



(28)

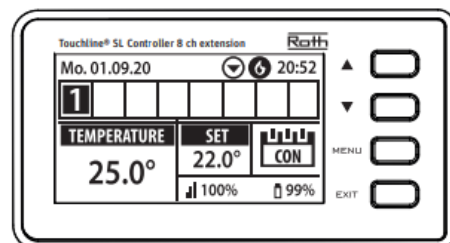


Registration of expansion module for master unit via repeater

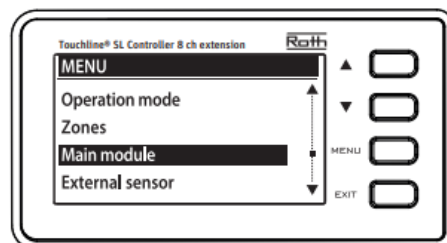
On the extension controller, select "Master module".

Select "Registration" and press "Yes".

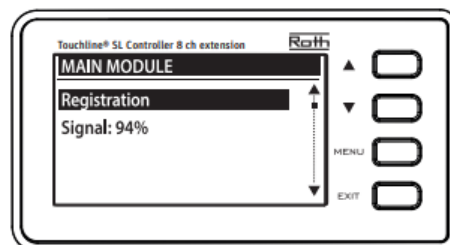
(29)



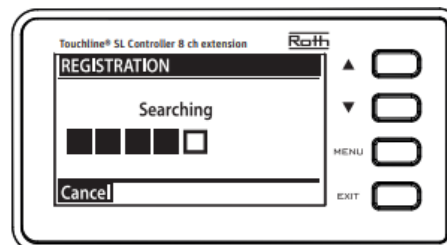
(30)



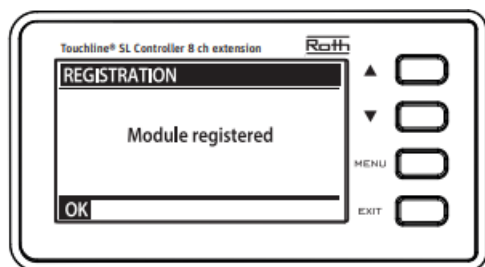
(31)



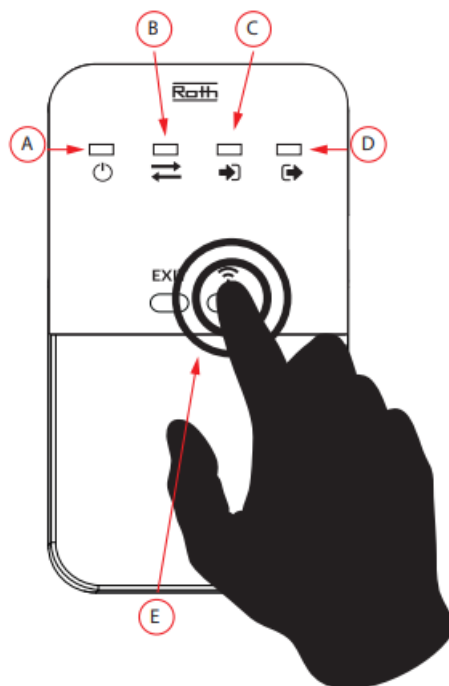
(32)



(33)

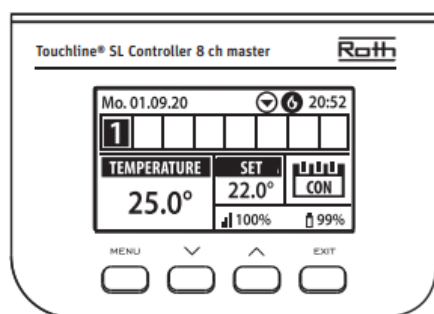


(34)

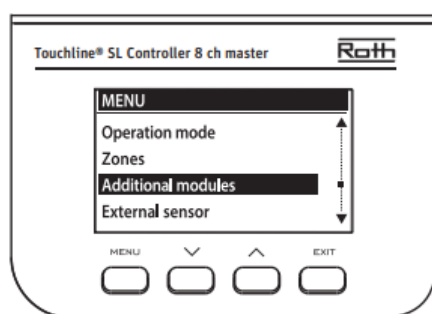


(35)

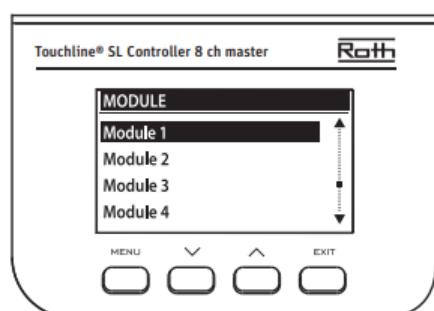
(36)



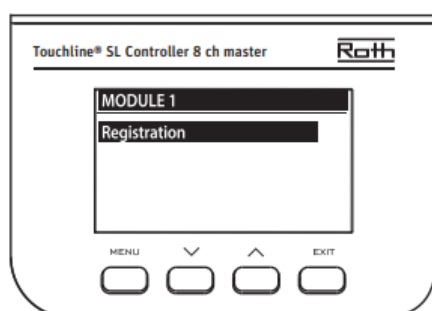
(37)



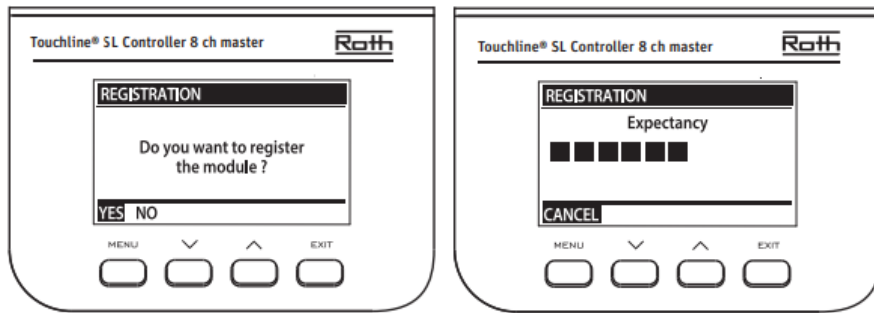
(38)



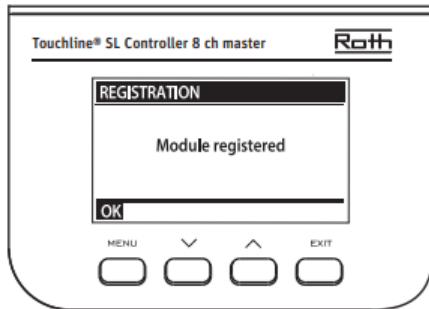
(39)



(40)



(41)



Press the register button (E) on the repeater. The registration LED “out” (D) will now light up constantly and the registration LED “in”(C) will flash.

Within 30 seconds, the registration LED “in” (C) starts to light up constantly and the registration LED “out” (D) will flash.

On the master unit, select “Additional modules”. You can connect up to 4 slave units to a master. Select “Registration” and press “Yes”.

Once the devices have found each other, the LEDs on the repeater flash 5 times, then the LEDs in the repeater turn off, with the exception of “Power”.

Roth Touchline® SL repeater between Smart Home components and master – Only for Roth Touchline® SL.

Setting up repeaters in between Smart Home components and master.

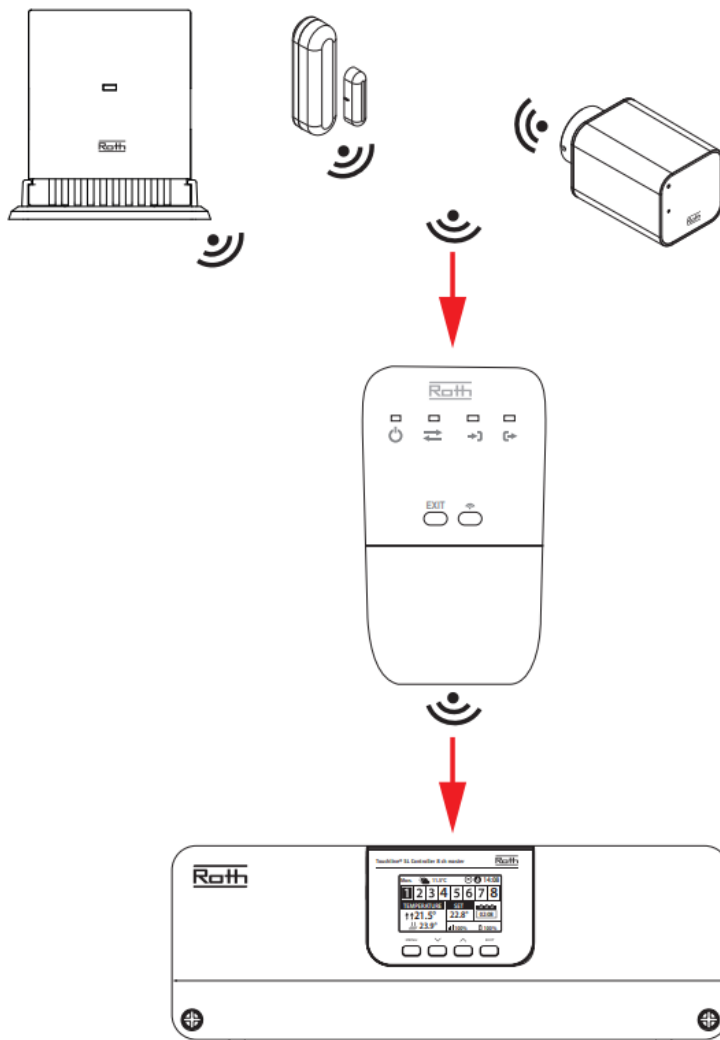
First connect the repeater to 230V voltage, the power diode will light up (A).

Press the register button (E).

The registration LED “out” (D) will now light up constantly and the registration LED “in” (C) will flash.

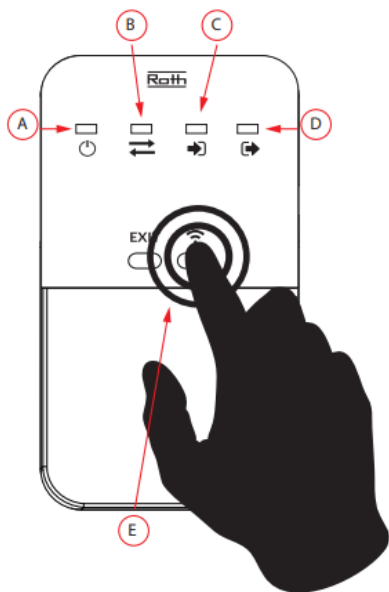
Press the registration button on the devices.

(42)

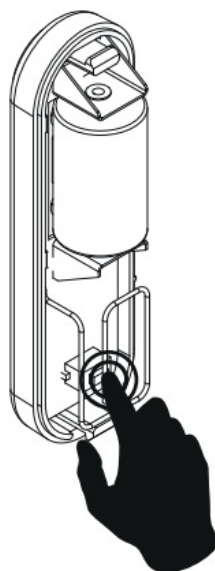


(43)

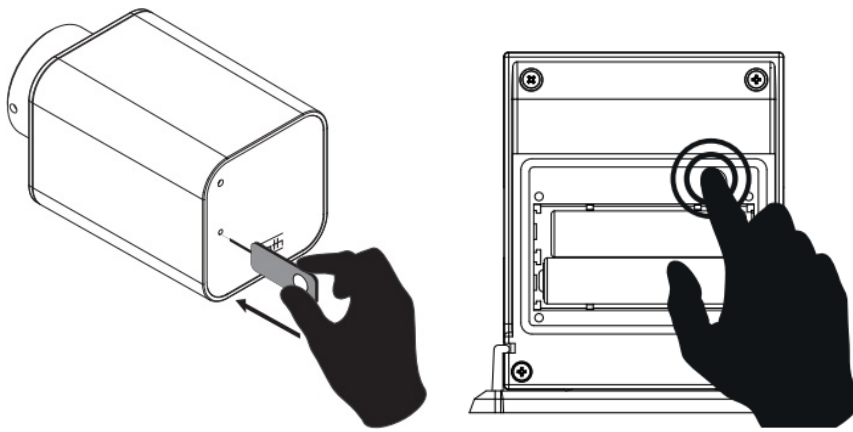
(44)



(45)



(46)

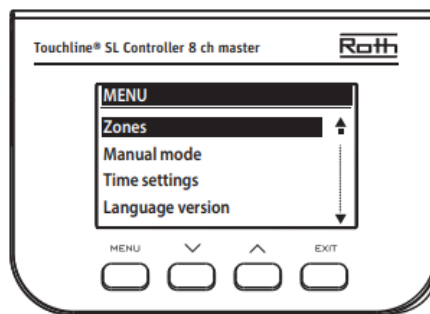
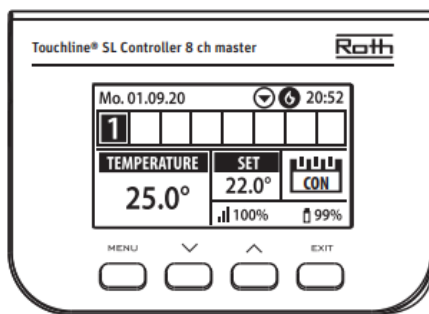


On the master, select “Windows sensor” or “Radiator actuators”. You can connect up to 6 smart home devices per. channel.

Select “Registration” and press “Yes” When the units have found each other, the LEDs on the repeater flash 5 times, after which the LEDs go out, with the exception of “Power”.

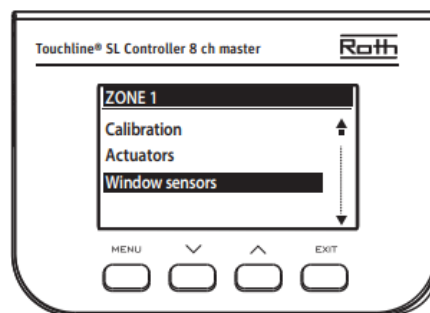
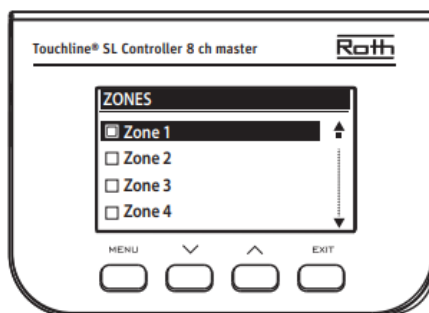
(47)

(48)



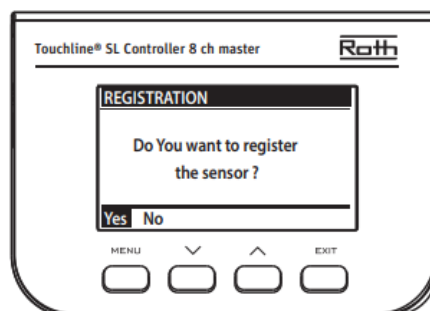
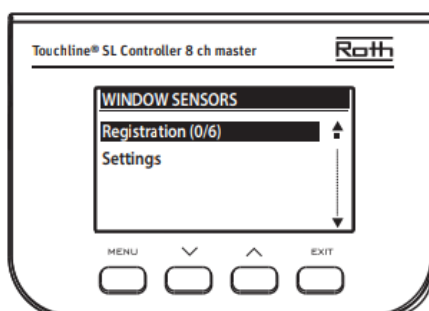
(49)

(50)



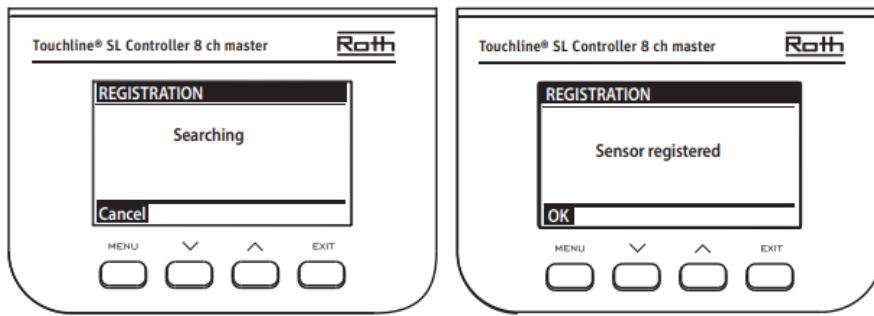
(51)

(52)



(53)

(54)



Roth Touchline® SL system with several repeaters in sequence – Only for Roth Touchline® SL.

Setting up repeaters in series (56)

Connect the first repeater to 230V voltage, the power diode will light up (A). Press the register button (E) on the repeater. The registration LED “out” (D) will now light up constantly and the registration LED “in” (C) will flash.

Thermostat (57)

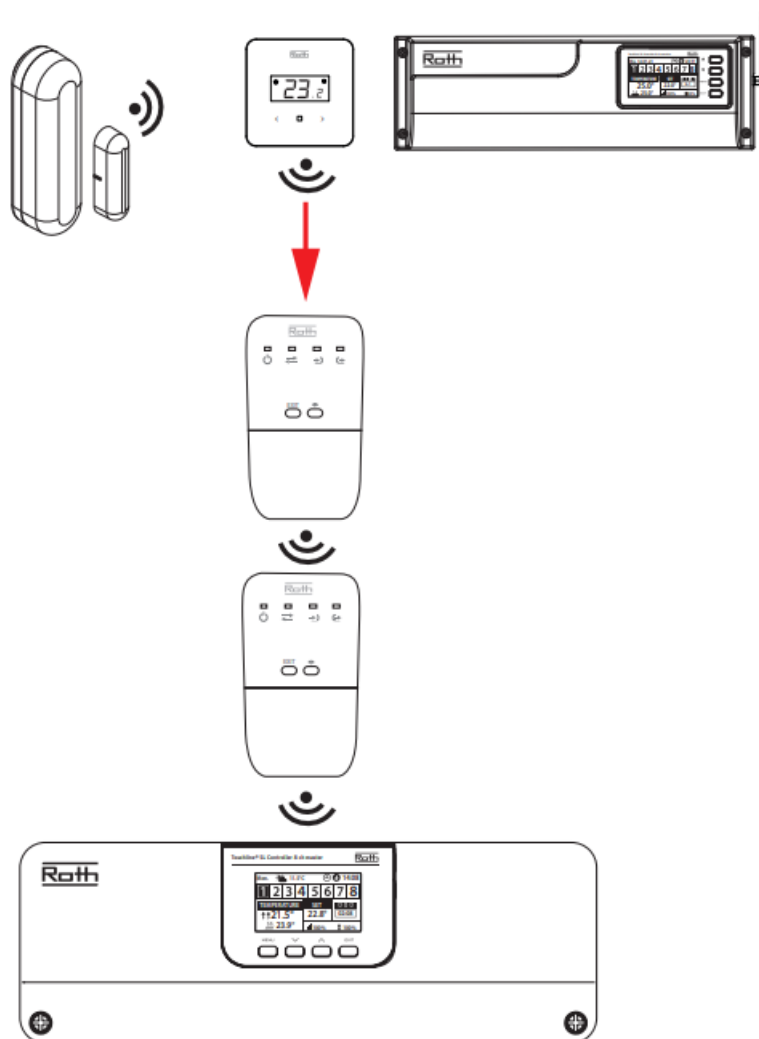
Press the registration button on the back of the room thermostat.

Extension module unit (58) – Remember to configure all repeaters first, see page 9. On the expansion module, select “Master module”. Select “Registration” and press “Yes”.

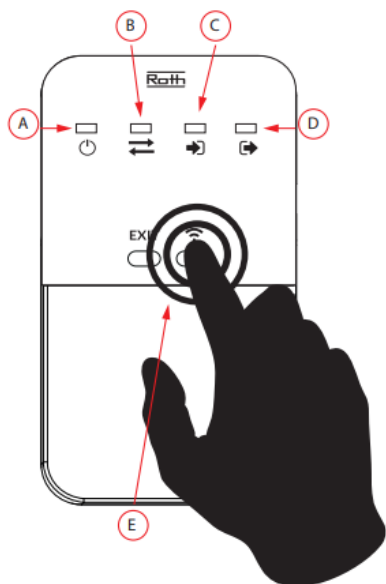
SmartHome devices (59+60)

Press the registration button on the desired device.

(55)

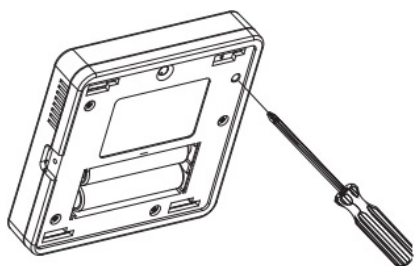


(56)

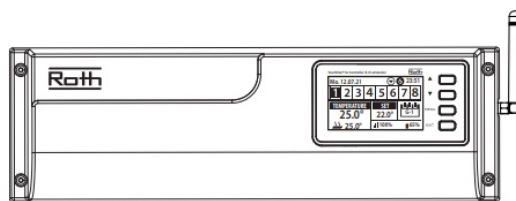


(57)

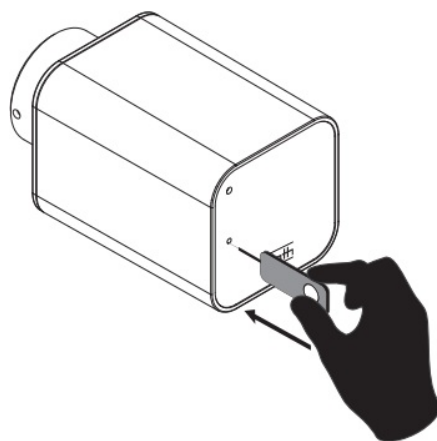
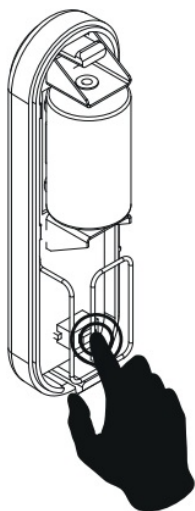
(58)



(59)



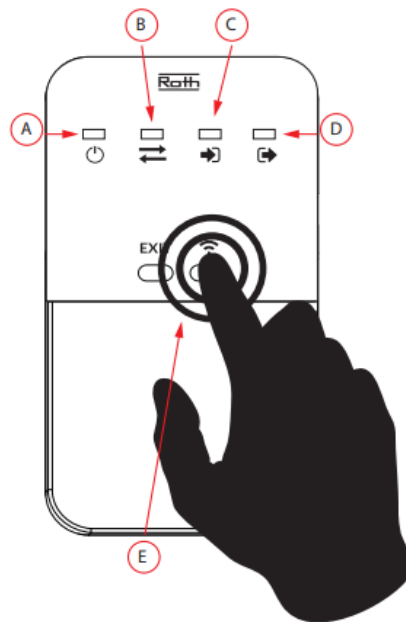
(60)



An extra repeater (60)

Connect the next repeater to 230V voltage, the power diode will light up (A). Press the register button (E) on the repeater. The registration LED “out” (D) will now light up constantly and the registration LED “in” (C) will flash. Within 30 seconds, the registration LED “in” (C) starts to light up constantly and the registration LED “out” (D) will flash. When the thermostat/zone is confirmed on the master control unit, the LED stops flashing and the repeater switches off all LEDs, except “Power”.

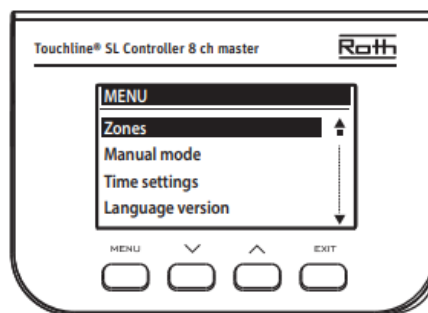
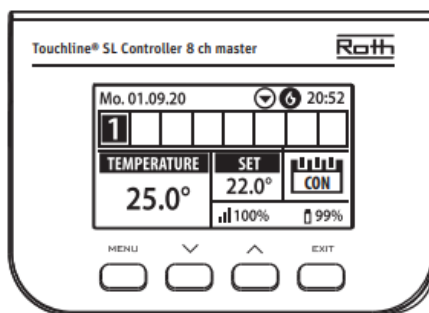
(61)



Register the unit on the master unit in the same way as without a repeater. Example of registering a floor sensor.

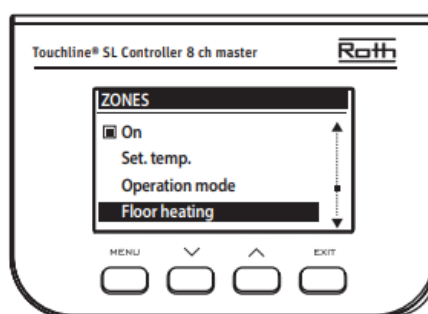
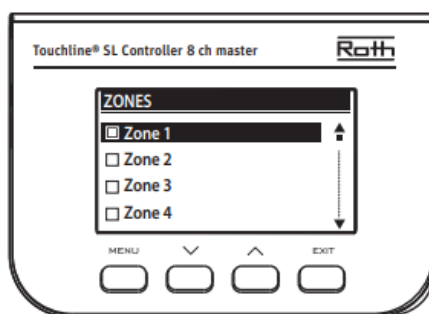
(62)

(63)



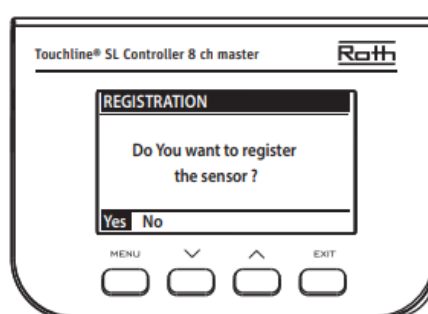
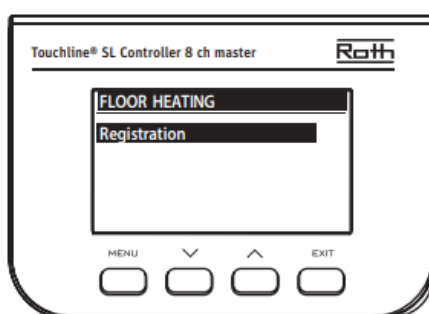
(64)

(65)

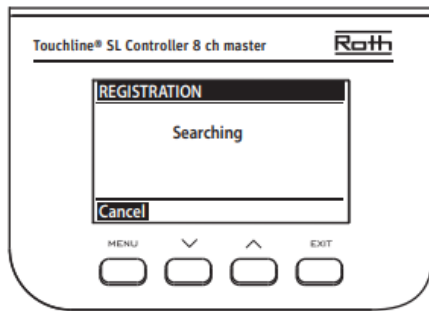


(66)

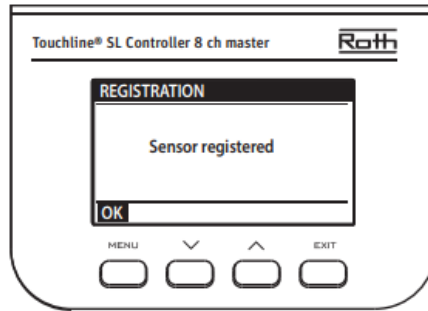
(67)



(68)



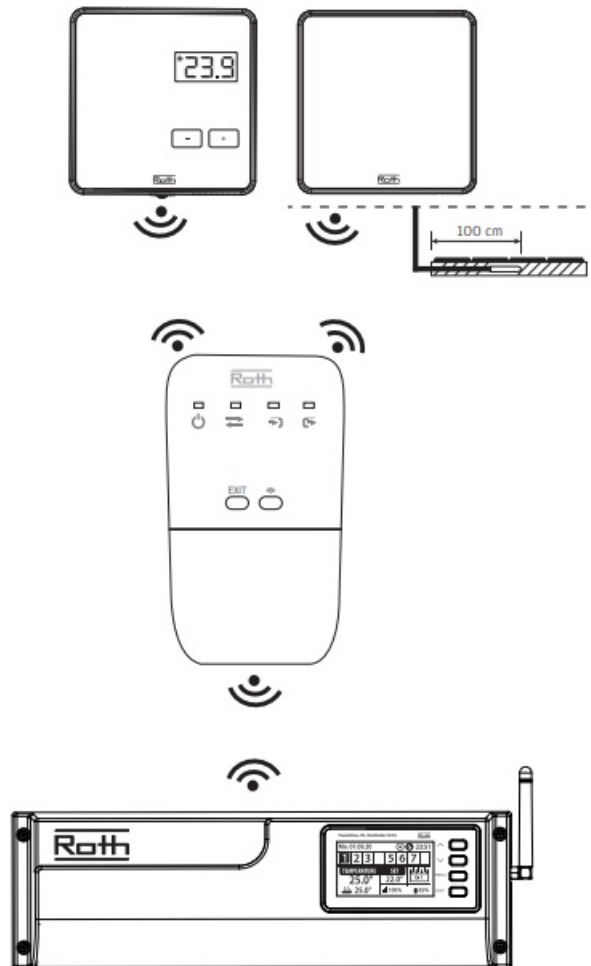
(69)



Roth Touchline® PL

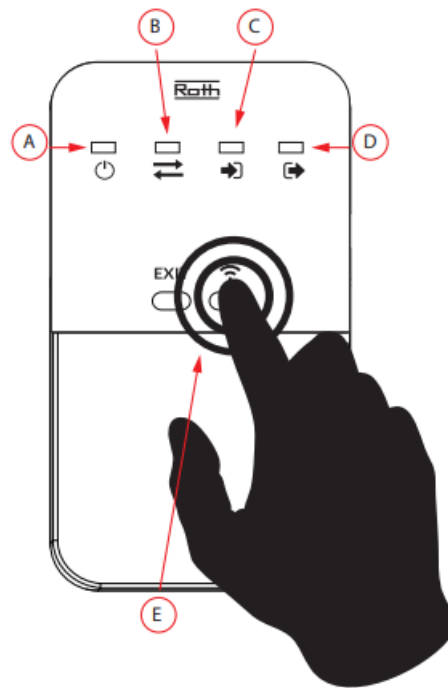
Roth Touchline® PL mix system with repeater between thermostats and control units.

(70)



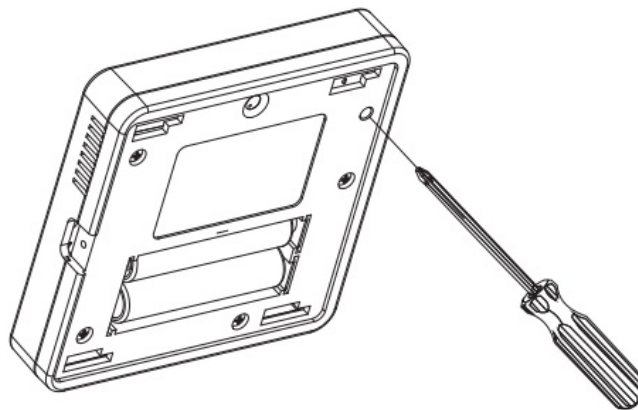
Connect the Repeater to the power supply – power indicator (A) will light up. Press the registration button (E) on the Repeater. The registration indicator “out” (D) will now be permanently on and the registration indicator “in” (C) will start flashing.

(71)



Press the registration button on the backside of the Room thermostat.

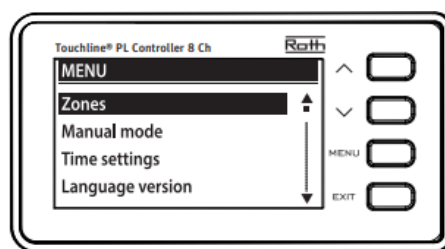
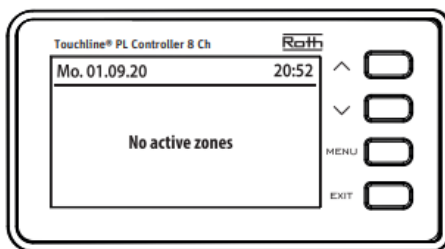
(72)



If installing a Room thermostat, follow the registration process on the Controller to register the Repeater to the same zone as the Room thermostat was registered to.

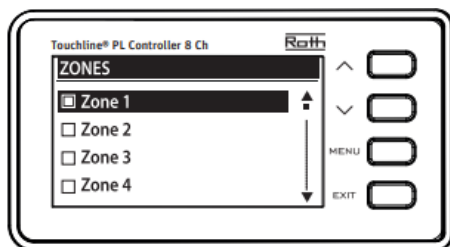
(73)

(74)

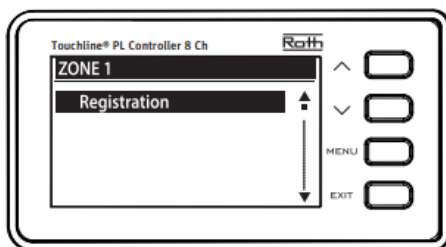


(75)

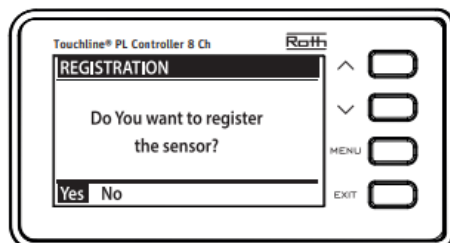
(76)



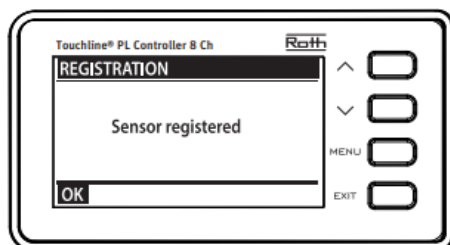
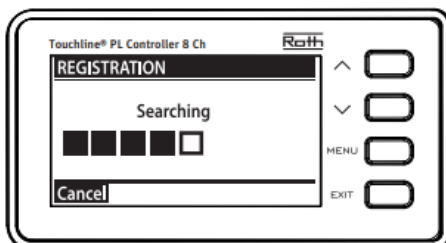
(77)



(78)



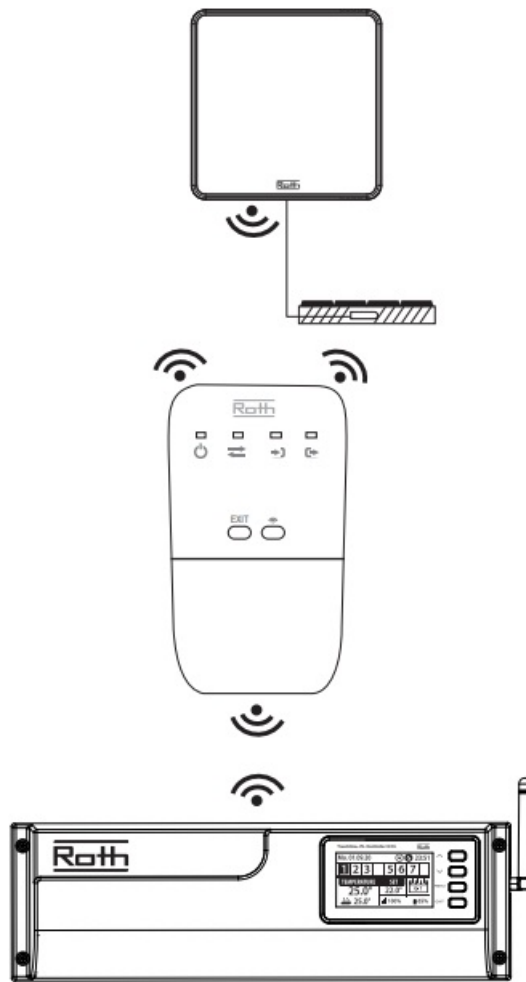
(79)



Roth Touchline® PL mix system with repeater between floor sensor and control units.

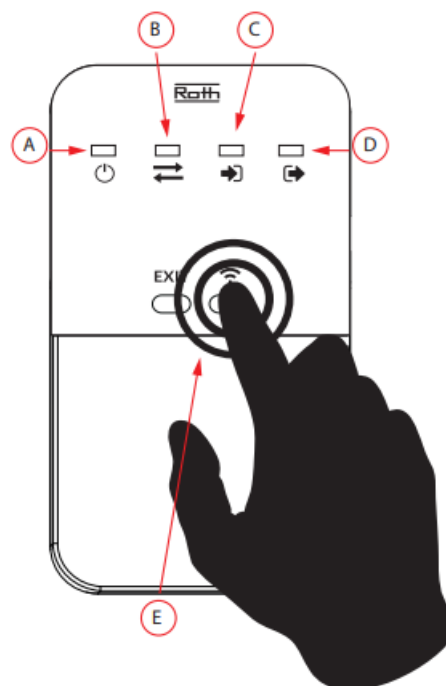
To be able to use a floor sensor, a room thermostat must be registered at the channel first.

(80)



Press the registration button (E) on the Repeater. The registration indicator “out” (D) will now be permanently on and the registration indicator “in” (C) will start flashing.

(81)

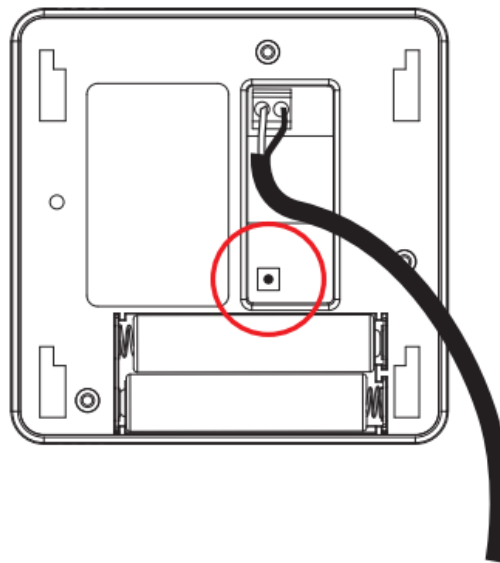


Floor sensor type “Touchline® PL room thermostat with wired floor sensor” – HVAC no. 7466397525

First register the room thermostat to the control unit via the repeater. Then register the floor sensor to the control unit via the repeater by pressing the registration button on the back of the floor sensor. The registration LED in (C)

will now light up constantly and the registration LED out (D) will flash.

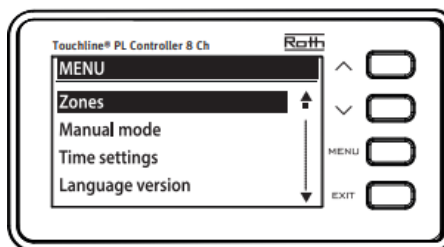
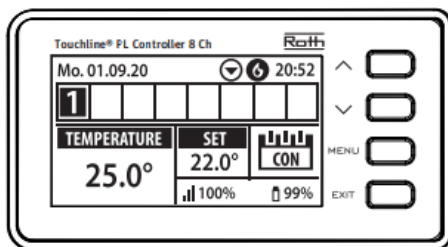
(82)



If installing a Floor sensor, follow the registration process on the Controller to register the Repeater to the zone.

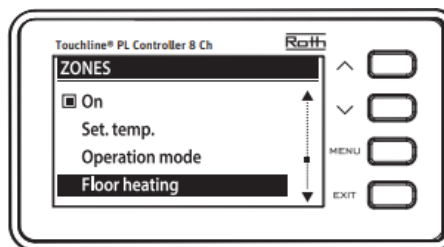
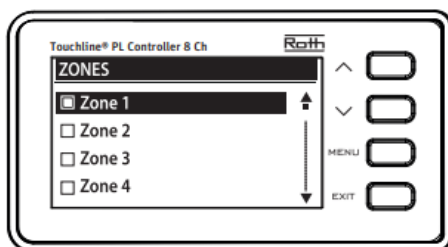
(83)

(84)



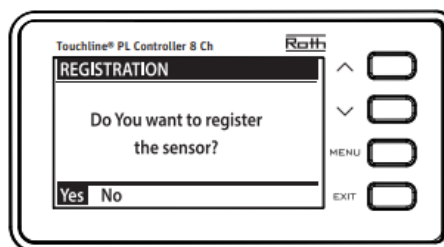
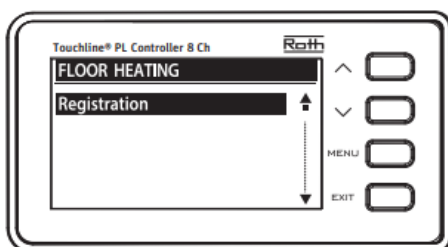
(85)

(86)



(87)

(88)



(89)

(90)



When the Repeater has been registered all indicator lights (A,B,C,D) on receiver will flash simultaneously for 5 seconds. The Controller will display the message "Sensor registered". The power indicator (A) will be permanently on. The communication indicator (B) will flash very shortly when the set temperature is changed from the Room thermostat and the Controller will update the new set temperature on the display. Only register devices that require a better signal in order to get the best range. The signal strength displayed on the Controller is for the signal between the Controller and the Repeater.

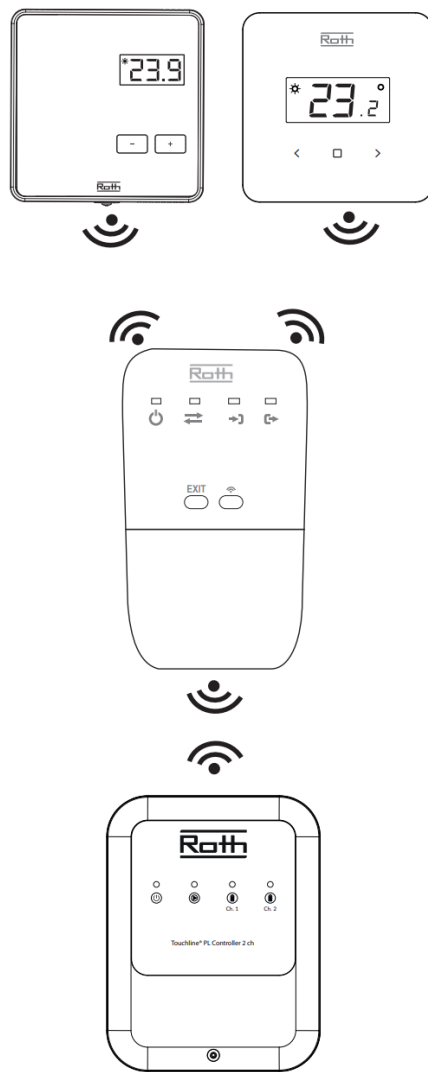
Roth Touchline® PL Controller 2 ch

Roth Touchline® PL Controller 2 Ch mix system with repeater between thermostats and control units.

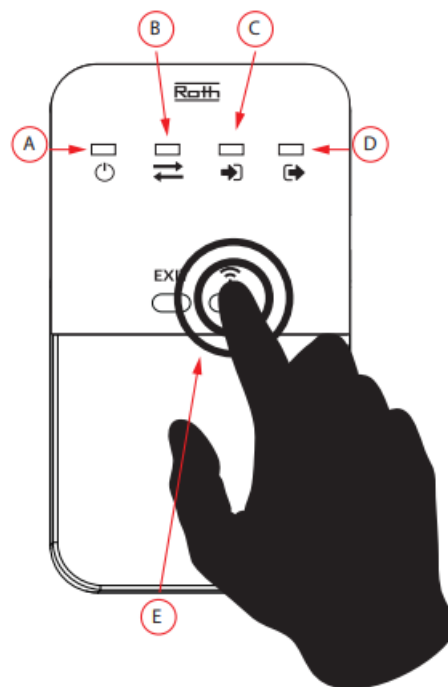
Connect the Repeater to the power supply – power indicator (A) will light up. Press the registration button (E) on the Repeater. The registration indicator "out" (D) will now be permanently on and the registration indicator "in" (C) will start flashing.

Press the registration button on the backside of the Room thermostat.

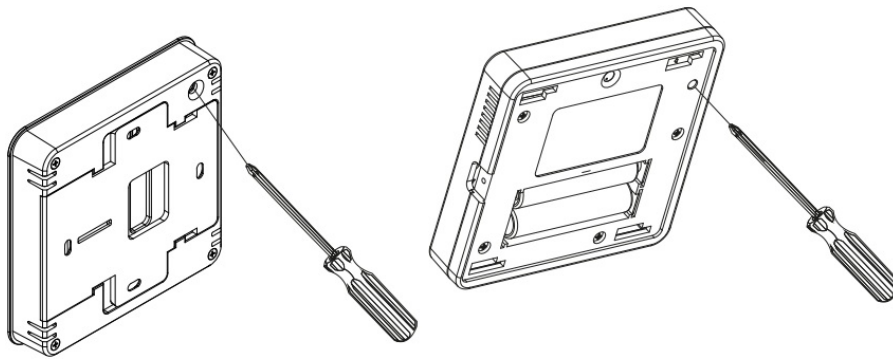
When the room thermostat is registered to the repeater, the repeater must be registered to the desired channel on the control unit, press once for channel 1 and twice for channel 2 on the registration button on the left side of the receiver. Check on the receiver that joints Ch.1 /Ch.2 turn on when the room thermostats call for heat.



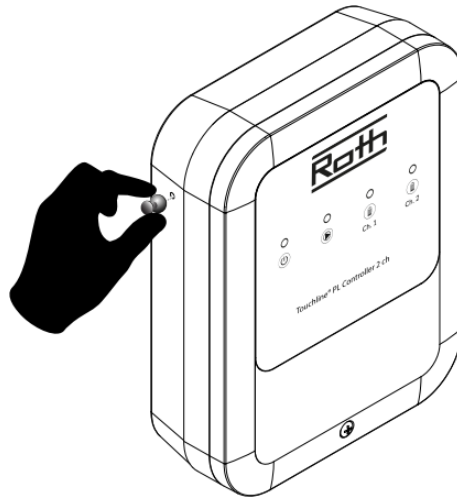
(92)



(93)



(94)



Roth Minishunt Plus

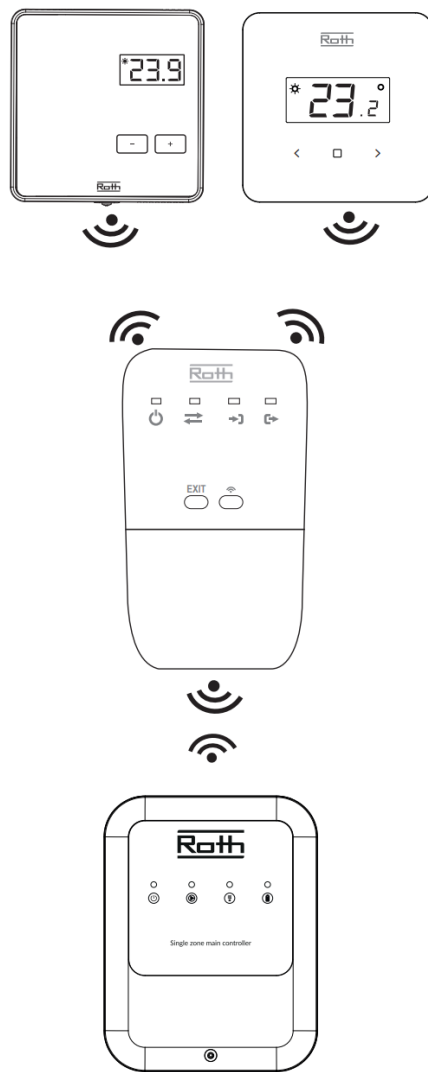
Roth Minishunt Plus mix system with repeater between thermostats and control units.

Connect the Repeater to the power supply – power indicator (A) will light up. Press the registration button (E) on the Repeater. The registration indicator “out” (D) will now be permanently on and the registration indicator “in” (C) will start flashing.

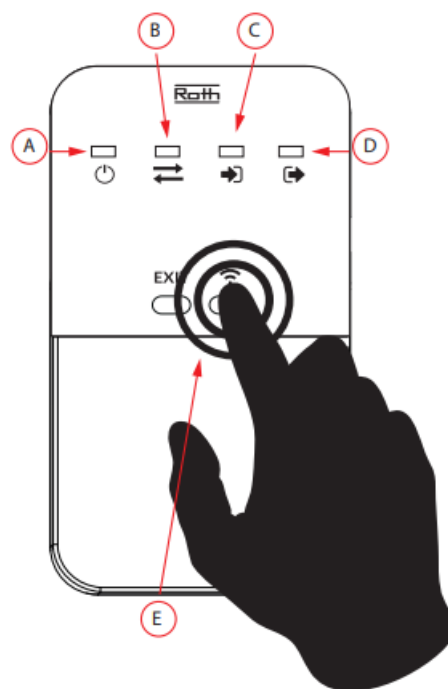
Press the registration button on the backside of the Room thermostat.

When the room thermostat is registered to the repeater, the repeater must be registered to the control unit, by pressing the registration button on the left side of the receiver.

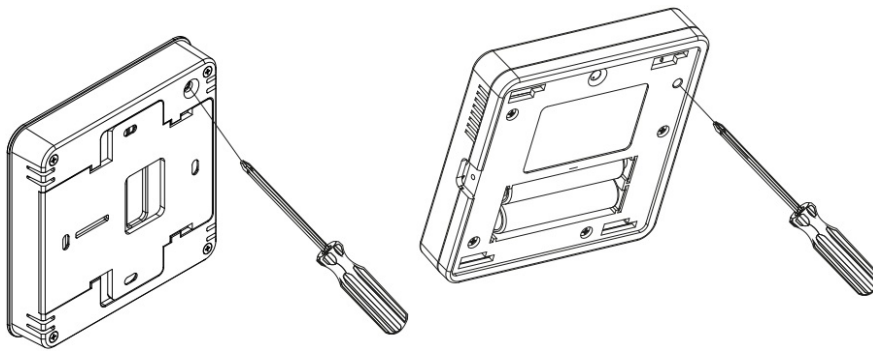
(95)



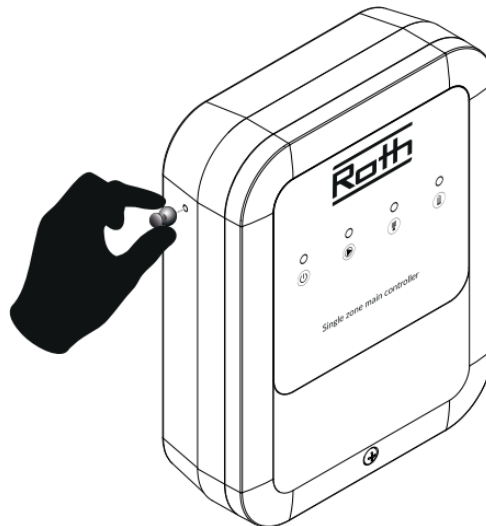
(96)



(97)



(98)



Roth QuickStop Sensor 2

Roth QuickStop Sensor 2 system with repeater between wireless sensor and control units.

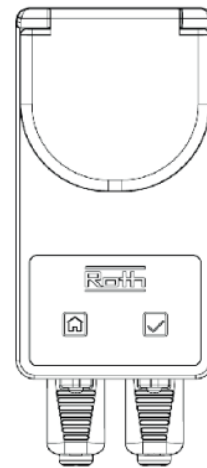
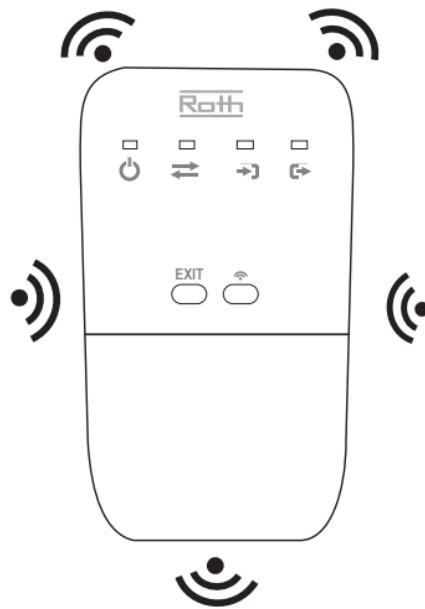
Connect the Repeater to the power supply – power indicator (A) will light up. Press the registration button (E) on the Repeater. The registration indicator “out” (D) will now be permanently on and the registration indicator “in” (C) will start flashing.

Press the registration button inside the sensor.

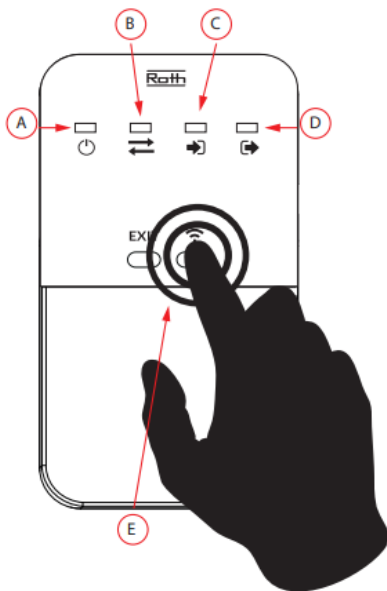
The registration LED on the repeater “in” (C) will now light up constantly and the registration LED “out” (D) will flash.

When the sensor is registered to the repeater, the repeater must be registered to the control unit. Press and hold the tick button for approx. 5 seconds until the LED starts flashing blue slowly. When the installation of the sensor via the repeater is completed, the LED will light blue for approx. 10 seconds.

(99)

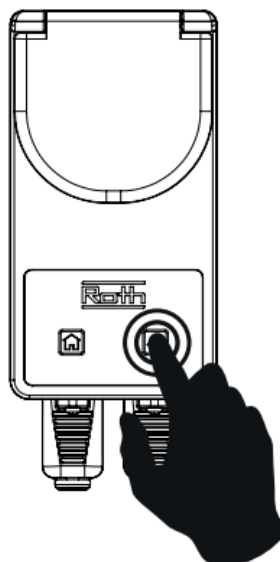
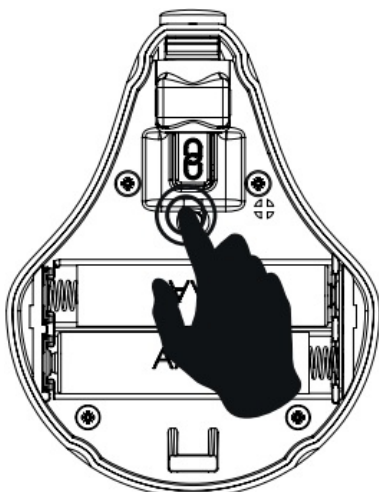


(100)




(101)

(102)

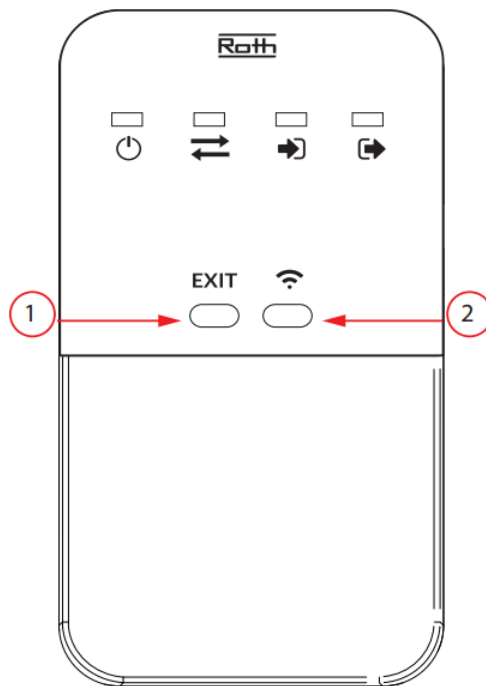


Roth Repeater – restoring factory settings.

If you want to reset your repeater to the factory settings, do the following:

1. Press and hold Exit button for 10 seconds – the two outermost control lights will start flashing.
2. Press Registration button  all control lights will start flashing.

(103)



Specification	Value
Supply voltage	230V / +/- 0%/50Hz
Ambient temperature	5°C – 50°C
Maximum power consumption	< 1W
Operating frequency	868MHz
Max. transmission power	25mW
Transmission range Controller/Repeater	50 m
Transmission range Repeater/Room thermostat	50 m



Roth Touchline® SL
QR

ROTH UK Ltd

1a Berkeley Business Park
Wainwright Road
Worcester WR4 9FA
Phone +44 (0) 1905 453424
E-Mail enquiries@roth-uk.com
technical@roth-uk.com
orders@roth-uk.com
accounts@roth-uk.com
roth-uk.com



ROTH DANMARK A/S

Centervej 5
3600 Frederikssund

E-mail: service@roth-danmark.dk
roth-danmark.dk

ROTH SVERIGE AB

Höjdrodergatan 22

212 39 Malmö

Tel. +46 40534090

Fax +46 40534099

E-mail: service@roth-sverige.se
roth-sverige.se

ROTH NORGE AS

Billingstadsletta 19

1396 Billingsstad

Tel. +47 67 57 54 00

E-mail: service@roth-norge.no
roth-norge.no
facebook.com/RothNorge

ROTH FINLAND OY

Raaseporintie 9 (Talo 2)

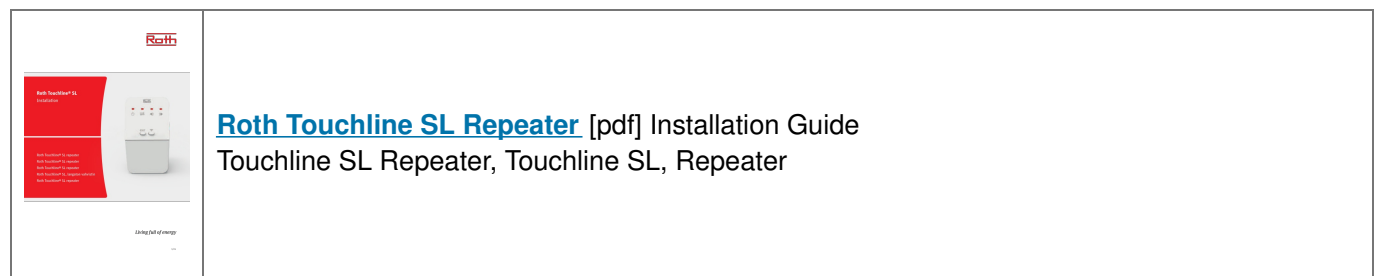
10600 Tammisaari

Puh. +358 (0)19 440 330

S-posti: service@roth-finland.fi
roth-finland.fi
facebook.com/RothFinland

Installation Roth Touchline® SL repeater_20220808

Documents / Resources



References

- [🌐 Frontpage | Norge.no](#)
- [🌐 Hej! Welcome to sweden.se – the official website of Sweden](#)
- [🇬🇧 UK.COM](#)