

ROSSLARE
Secure Access Solutions
AxTraxPro basIP
Intercom System



ROSSLARE AxTraxPro basIP Intercom System User Guide

[Home](#) » [ROSSLARE](#) » ROSSLARE AxTraxPro basIP Intercom System User Guide 

Contents

- 1 ROSSLARE AxTraxPro basIP Intercom System
- 2 Product Usage Instructions
- 3 FAQs
- 4 Documents / Resources
 - 4.1 References

ROSSLARE
Secure Access Solutions

ROSSLARE AxTraxPro basIP Intercom System



Specifications

- Product Name: basIP Intercom System
- Integration Guide: AxTraxPro basIP Intercom System Integration Guide

Product Usage Instructions

Overview

This document describes how to integrate basIP Intercom System with the AxTraxPro access control management system.

AxTraxPro integrates with basIP Link cloud based intercom solutions to facilitate communication and enhance entry management. This allows for secure and efficient visitor verification, ensuring that only authorized individuals gain access to the facility.

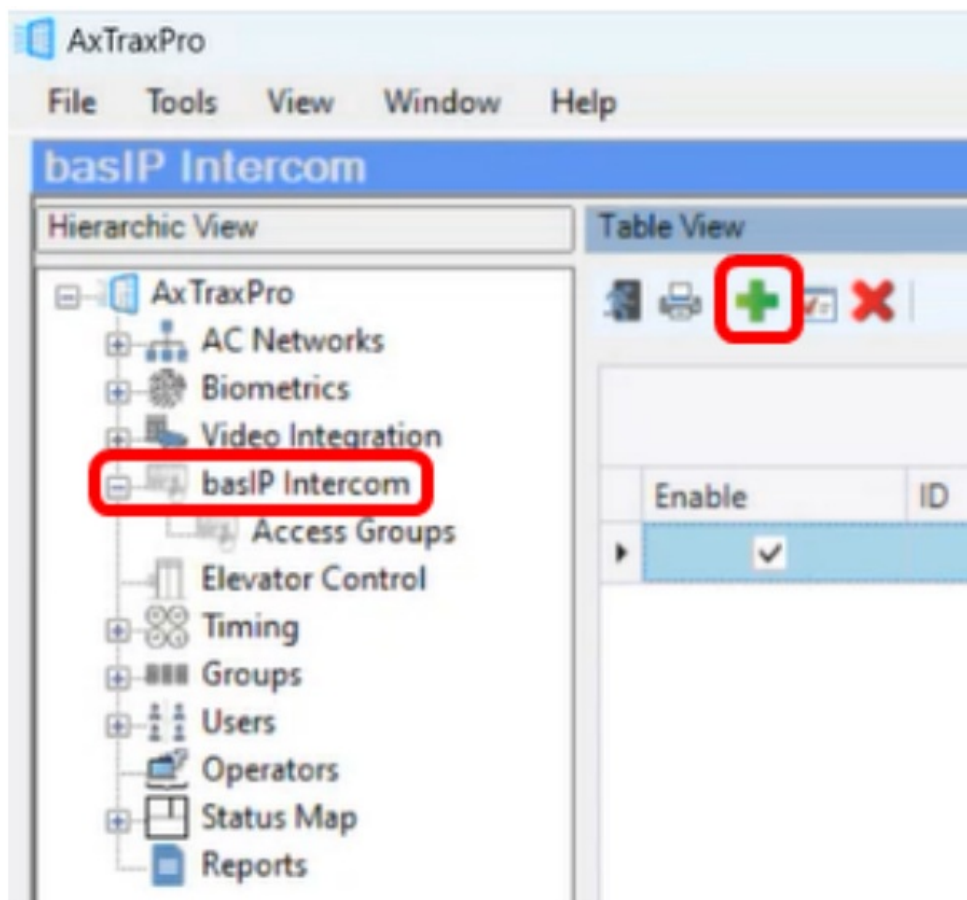
Requirements

- Valid Rosslare licenses for basIP Intercom System and for basIP Intercom System Maintenance Contract are required.
- You must be running AxTraxPro version 28.0.3.4 and higher and be familiar with using the interface.

Configuring the basIP Intercom System

To configure a basIP intercom system:

1. In the Tree view, select basIP Intercom.



2. On the toolbar, click
3. In the Intercom Configuration window, configure the LINK server as follows:
 - Wiegand Format – select 26 bit or 32 bit.
 - URL – the URL of the basIP LINK server.
 - User name – the user name defined in the basIP LINK server.

- Password – the password issued to you.



The image shows a software dialog box titled "Intercom configuration". At the top center is the "basIP" logo, which consists of a stylized camera lens icon followed by the text "basIP". Below the logo is a section titled "Connection details" which contains several input fields. The "Vendor" field is a dropdown menu currently showing "basIP". The "Wiegand Format" field is a dropdown menu showing "26 bit". The "URL" field is an empty text box. The "User name" field is an empty text box. The "Password" field is a text box containing the placeholder text "Enter password...", and it has a small eye icon to its right for toggling visibility. At the bottom right of the "Connection details" section is a "Connect" button. At the very bottom of the dialog box are two buttons: "Cancel" on the left and "OK" on the right. Red rectangular boxes are drawn around the "Wiegand Format", "URL", "User name", "Password", and "OK" fields/buttons.

Intercom configuration

basIP

Connection details

Vendor basIP

Wiegand Format 26 bit

URL

User name

Password Enter password...

Connect

Cancel OK

4. Click Connect.

Intercom configuration



Connection details

Vendor: basIP

Wiegand Format: 26 bit

URL: https://link.bas-ip.com/api

User name: test@rosslaresecurity.com

Password: *****

Connect

Cancel OK

5. Click OK.

6. In the Table View, the LINK basIP server appears.

AxTrasPro

File Tools View Window Help

basIP Intercom

Hierarchical View

- AxTrasPro
 - AC Networks
 - Biometrics
 - Video Integration
 - basIP Intercom
 - Access Groups
 - Elevator Control
 - Timing
 - Groups
 - Users
 - Operators
 - Status Map
 - Reports

Table View

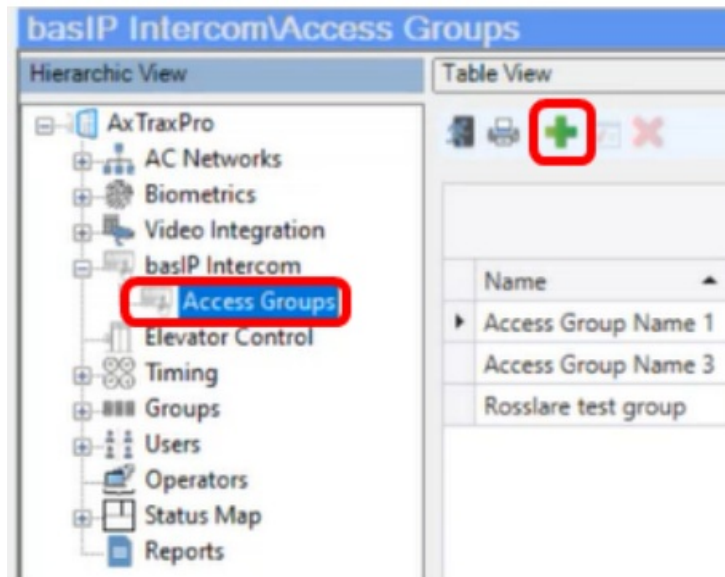
Enable	ID	Vendor	Description	Status
✓	1	basIP	BAS-IP	OK

Events

Configuring Groups and Users in basIP Intercom System

To add a new basIP Intercom Access Group:

1. In the Tree view, select Access Groups and click



2. In the Add Access Group window, enter a name for the Access Group Name or leave as created by the system.

Add Access Group

Access Group Name:

Select Time zone:

Select Devices:

<input type="checkbox"/>	ID	Description	Model
<input type="checkbox"/>	1	test device	AA12
<input type="checkbox"/>	3	aq07ll test	AQ07LL
<input type="checkbox"/>	6	AA05-test	AA05
<input type="checkbox"/>	7	VK av-01kd---test	AV01KD
<input type="checkbox"/>	8	Test	AA07
<input type="checkbox"/>	12	aa12	AA12

Select Groups:

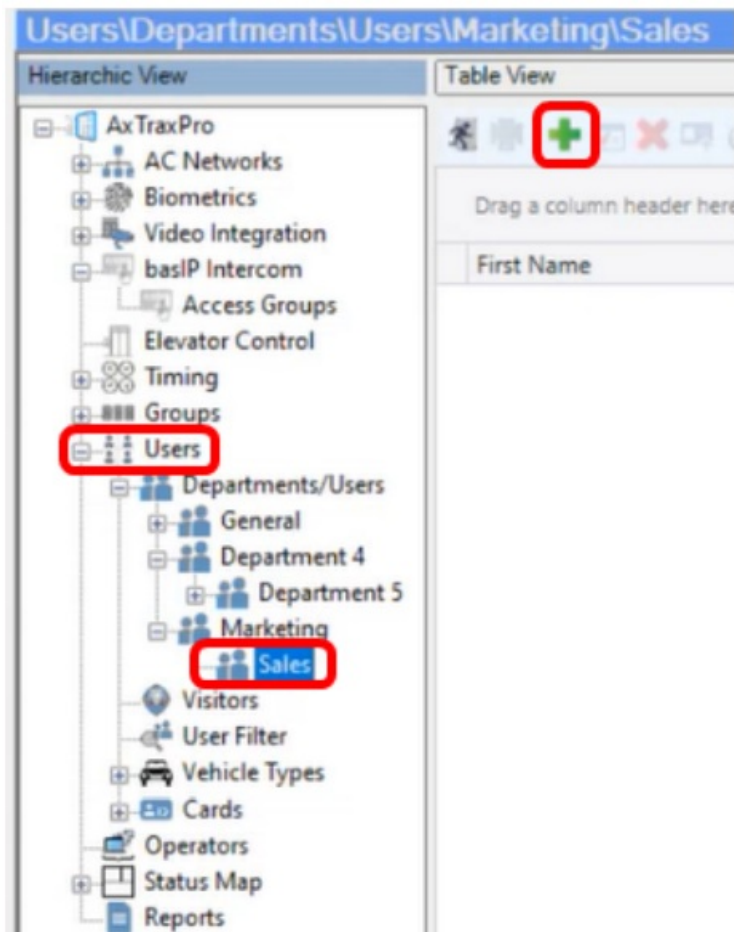
<input type="checkbox"/>	Name
<input type="checkbox"/>	Home group
<input type="checkbox"/>	LONDON NOVEMBER 17-18
<input type="checkbox"/>	Трое в лодке, не считая собаки
<input type="checkbox"/>	Bogoslov mqtt group
<input type="checkbox"/>	MQTT test group
<input type="checkbox"/>	Test (lula)

Cancel **Apply**

3. In the Time zone list, select a time zone.
4. Select the required devices.
5. Select the required groups.
6. Click Apply when all parameters are selected.
7. Repeat Steps 1 to 6 for each Access Group to be added.

To add a new user to the basIP Intercom Access Group:

1. In the Tree view, select a Department/Users or sub-department within the Users branch and click



2. In the User Properties window, add the user's details and select the parameters.

User Properties

General Access Groups Credentials Details Elevators

Photo

Add

Color... Location...

Rights

Antipassback Immunity

Never

Extended Door Open Time

Auto Open...

Supported only on AC-825IP

Interlock Immunity

Lockdown Immunity 0 Lockdown Groups

First Name

Tom

Last Name

Mark

Department

Sales

Car Parking Group

Car Parking Group 1

Intercom Access Group

Rosslare test group

Valid Date

From 14/08/2024

Until 14/08/2024

00:00 23:59

Email Notifications

Enable

Links

Access Granted Command

Access Denied Command

Handicapped

User Selected Output Group

None

User Dual Authentication Override on Reader

Force Time Zone

Never

Time Zone Immunity

Never

Print Card

New OK Cancel

3. Click OK when you finished defining all fields.

4. Repeat Steps 1 to 3 for each user to be added.

All product names, logos, and brands are property of their respective owners.

DISCLAIMER:

- The data contained within Rosslare’s materials or documentation is intended to provide only general information about products available for purchase from Rosslare and its associated companies (“Rosslare”). Reasonable efforts have been made to ensure the accuracy of this information. However, it might contain typographic errors, inaccuracies, or omissions that may relate to product descriptions, visual pictures, specifications, and other details. All technical specifications weights, measures and colors shown, are best approximations. Rosslare can not be held responsible and assumes no legal liability for the accuracy or completeness of the information provided. Rosslare reserves the right to change, delete, or otherwise modify the information, which is represented, at any time, without any prior notice.
- © 2024 Rosslare All rights reserved.
- For more information regarding support, visit <https://support.rosslaresecurity.com>.

[www.rosslaresecurity.com](https://support.rosslaresecurity.com)

FAQs


Q: What are the main requirements for configuring the basIP Intercom System?

A: The main requirements include having valid Rosslare licenses for the system and running AxTraxPro version 28.0.3.4 or higher.





Q: How can I add a new user to the basIP Intercom Access Group?

A: To add a new user, navigate to the Users section in the Tree view, click on the relevant button to add a user, fill in the required details, and click OK to save.

Documents / Resources

	<p>ROSSLARE AxTraxPro basIP Intercom System [pdf] User Guide</p> <p>AxTraxPro basIP Intercom System, AxTraxPro, basIP Intercom System, Intercom System</p>
---	--

References

-  [Rosslare](#)
-  [Rosslare](#)
-  support.rosslaresecurity.com
-  support.rosslaresecurity.com/portal/en/home
- [User Manual](#)

Manuals+ Privacy Policy

This website is an independent publication and is neither affiliated with nor endorsed by any of the trademark owners. The "Bluetooth®" word mark and logos are registered trademarks owned by Bluetooth SIG, Inc. The "Wi-Fi®" word mark and logos are registered trademarks owned by the Wi-Fi Alliance. Any use of these marks on this website does not imply any affiliation with or endorsement.