



ROSS Touch Drive Panel User Guide

[Home](#) » [ROSS](#) » ROSS Touch Drive Panel User Guide 

ROSS Touch Drive Panel User Guide



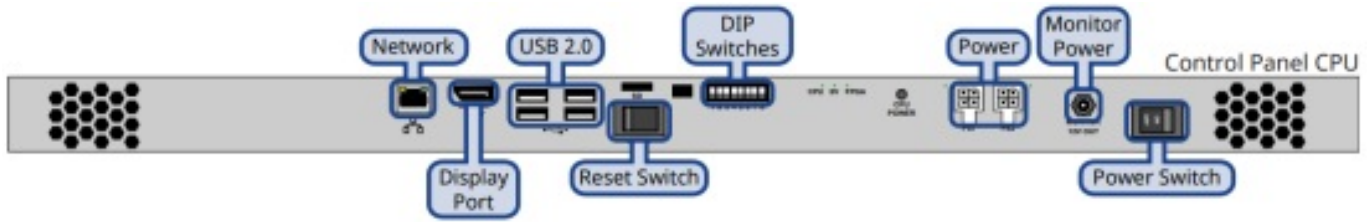
Contents

- [1 Panel Ports and Connectors](#)
- [2 Specifications](#)
- [3 Desk Mounting](#)
- [4 Monitor Ports and Connectors](#)
- [5 Cabling](#)
- [6 Documents / Resources](#)
- [7 Related Posts](#)

Panel Ports and Connectors



NOTICE Only connect certified Ross equipment with Ross provided cables to the Monitor Power port.



Notes:

- There is an additional USB 3.0 port on the side of the backslash on some panels. The ports on the back of the panel are all USB 2.0.
- The ports on the TD1C are in a different position, but have the same function.

Specifications

Input Voltages

All: 100 – 120V~, 220 – 240V~, 47-63Hz

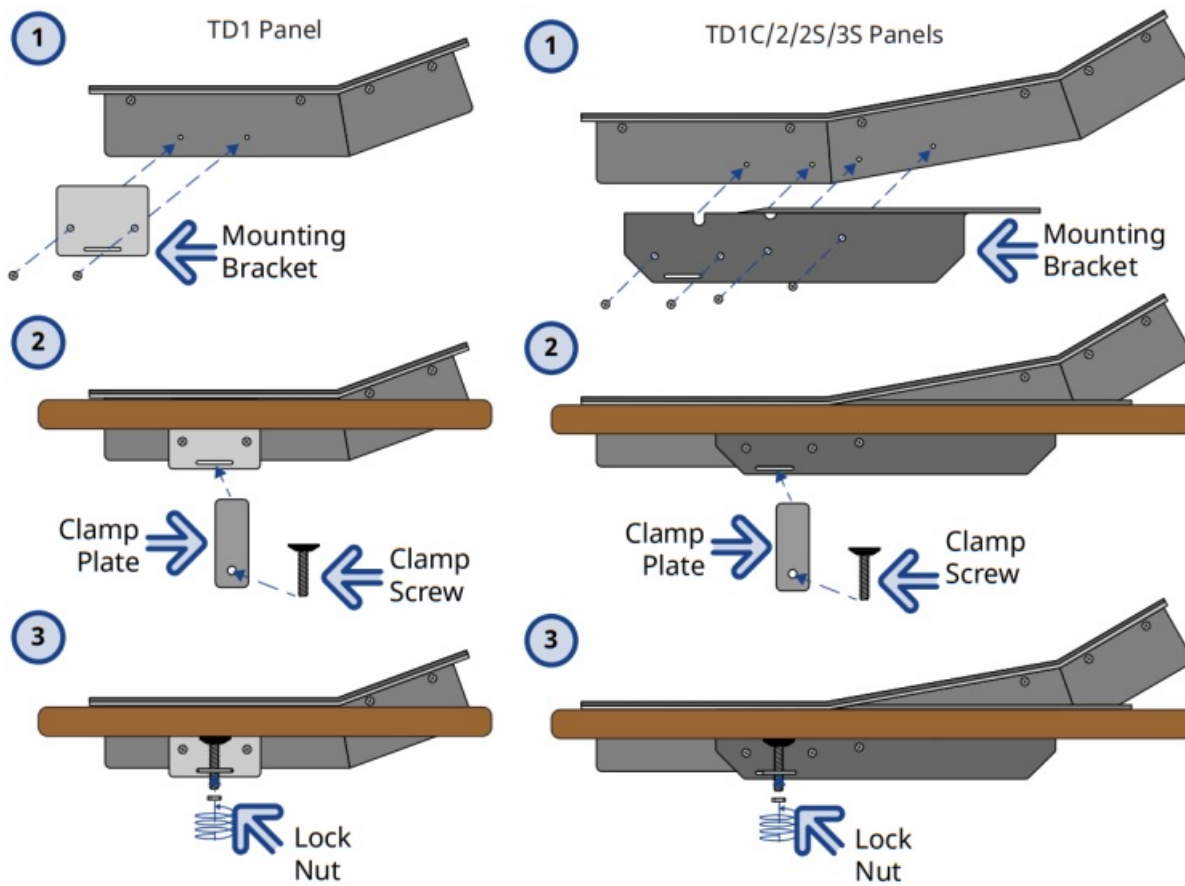
Power Consumption

TD1C	50W	3.33A	15V
TD1	73W	4.87A	15V
TD2	85W	5.67A	15V
TD2S	107W	7.13A	15V
TD3S	165W	11A	15V

Desk Mounting

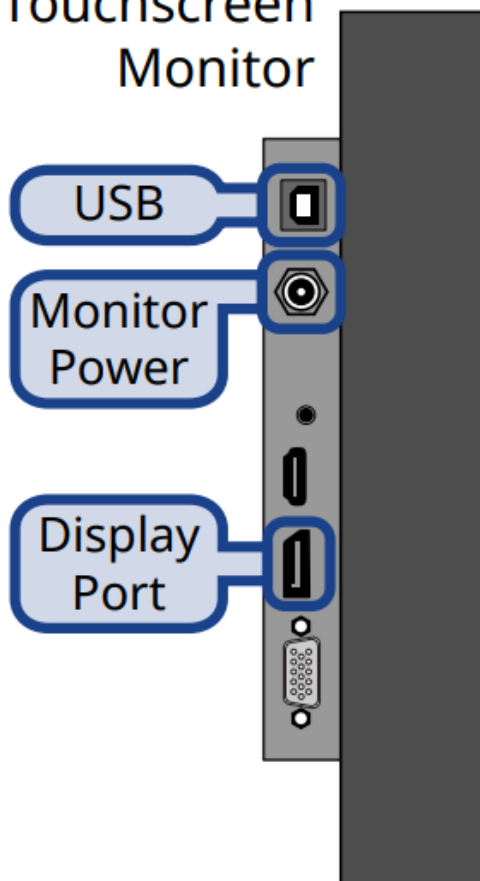
Note: The Desk Mounting option is required to properly secure the panel to a desk.

Note: You may have to remove the legs from the control panel to mount it in a desk.

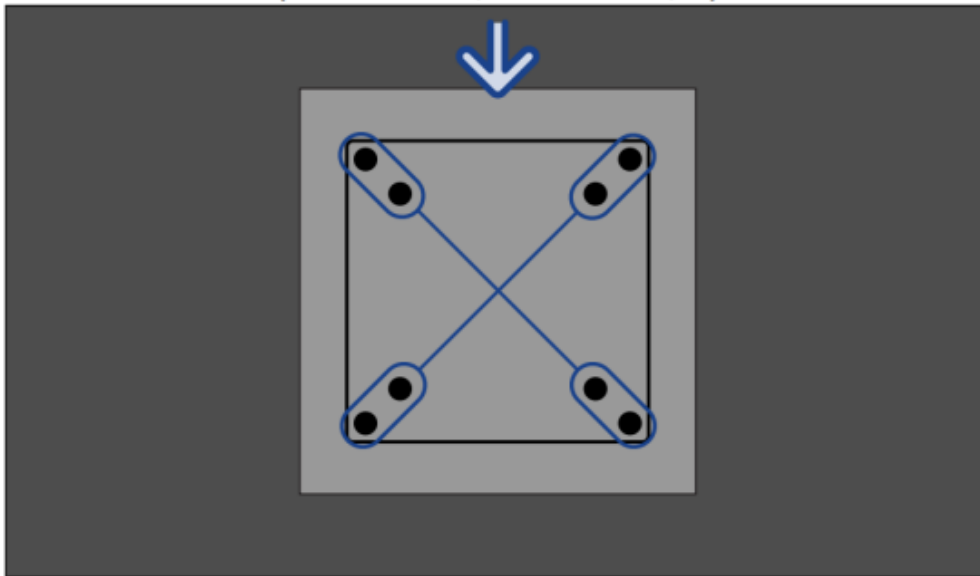


Monitor Ports and Connectors

Touchscreen Monitor



VESA-100 Mount (VESA MIS-D, 75 and 100, C)



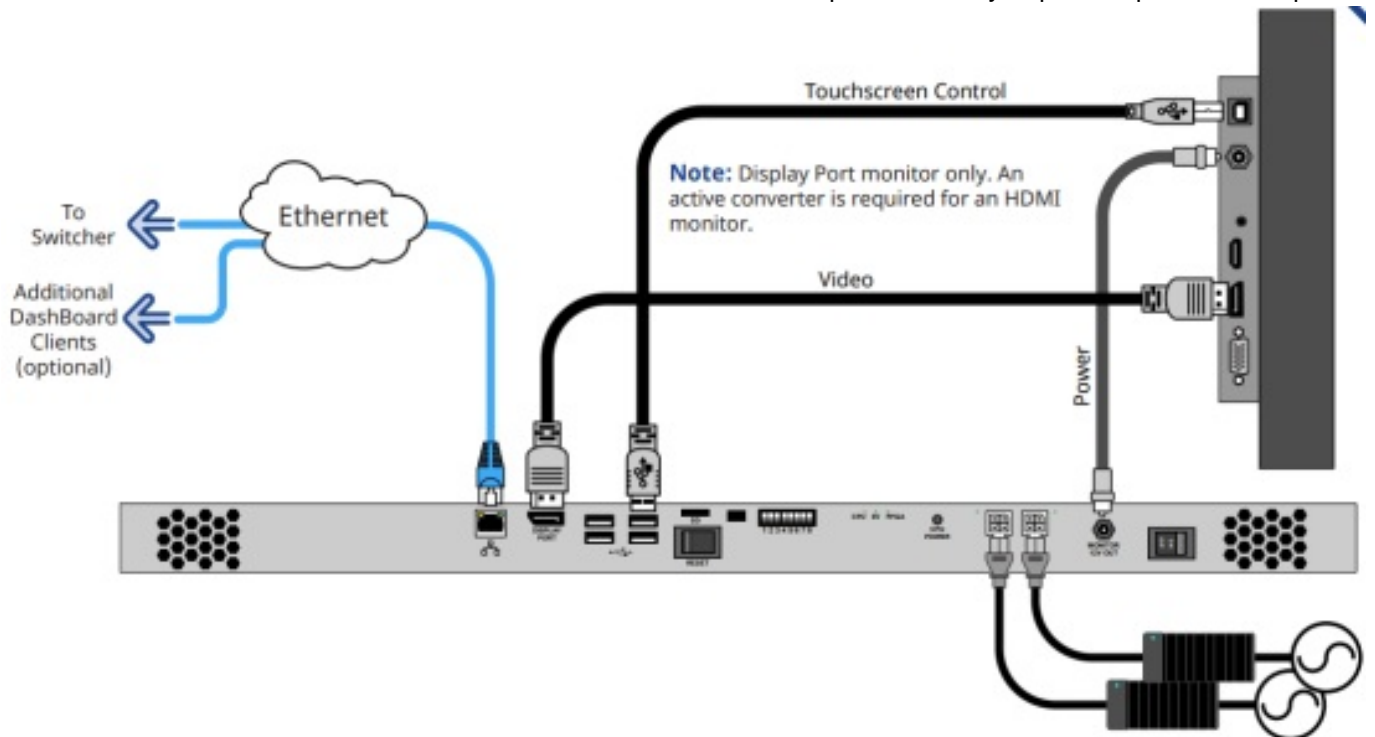
Cabling



CAUTION! Only use the cable provided to connect power to your Touchscreen display from the 12V Monitor port.



NOTICE The Touchscreen must be connected to the control panel before you power up the control panel.



Mains Power **Note:** It is recommended that you always connect the AC Power Adapter to the device before connecting to Mains Power.



Having a problem? Call our free, 24-hour technical support hotline to speak with a live product specialist located right here in our facility.

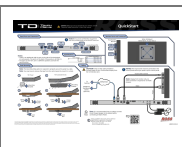
Tel: (+1) 613 • 652 • 4886

Email: techsupport@rossvideo.com

© 2021 Ross Video Limited. Ross®, MiniME™, TouchDrive™ and any related marks are trademarks or registered trademarks of Ross Video Limited. All other trademarks are the property of their respective companies. PATENTS ISSUED and PENDING. All rights reserved. No part of this publication may be reproduced, stored in a retrieval system, or transmitted in any form or by any means, mechanical, photocopying, recording or otherwise, without the prior written permission of Ross Video. While every precaution has been taken in the preparation of this document, Ross Video assumes no responsibility for errors or omissions. Neither is any liability assumed for damages resulting from the use of the information contained herein.



Documents / Resources



[ROSS Touch Drive Panel](#) [pdf] User Guide
Touch Drive Panel