

Ross-Tech VCDS Windows-based Diagnostic Software Instruction Manual

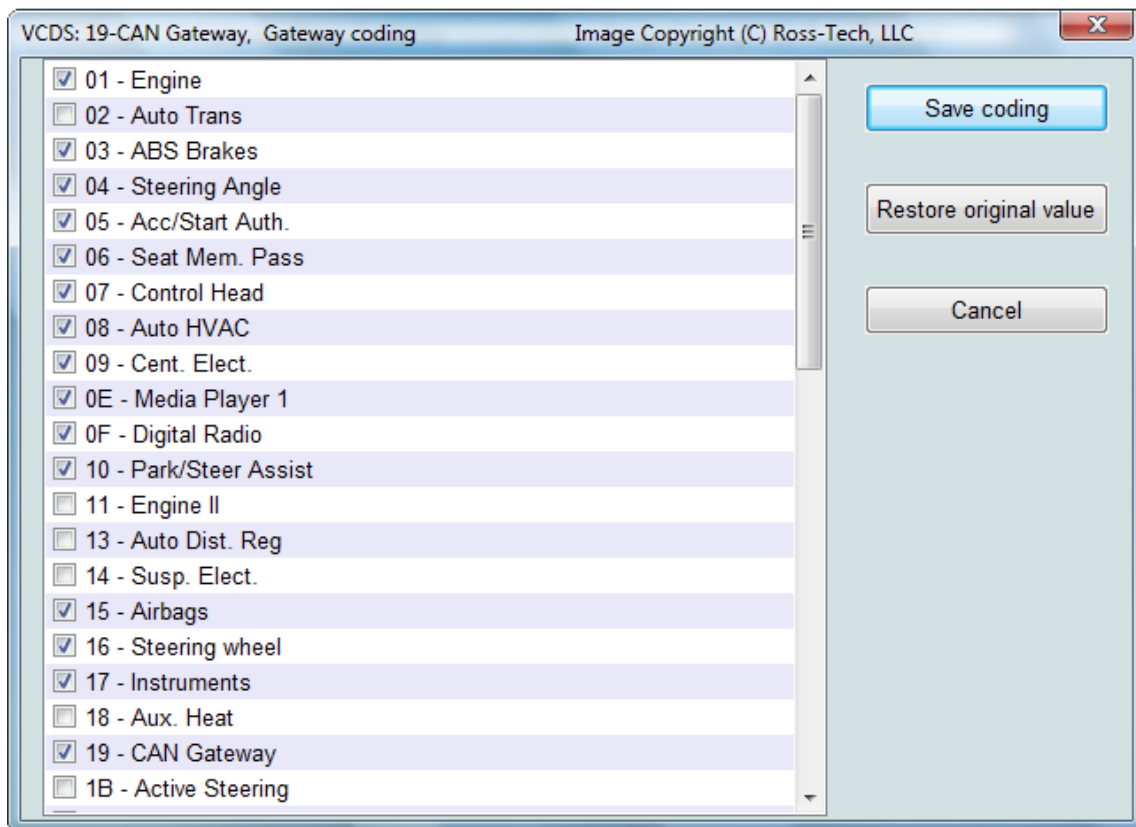
[Home](#) » [Ross-Tech](#) » Ross-Tech VCDS Windows-based Diagnostic Software Instruction Manual 

Contents

- [1 Ross-Tech VCDS Windows-based Diagnostic Software](#)
- [2 Installation Instructions for VCDS® Release 22.3+](#)
- [3 Documents / Resources](#)
 - [3.1 References](#)
- [4 Related Posts](#)

Ross-Tech

Ross-Tech VCDS Windows-based Diagnostic Software

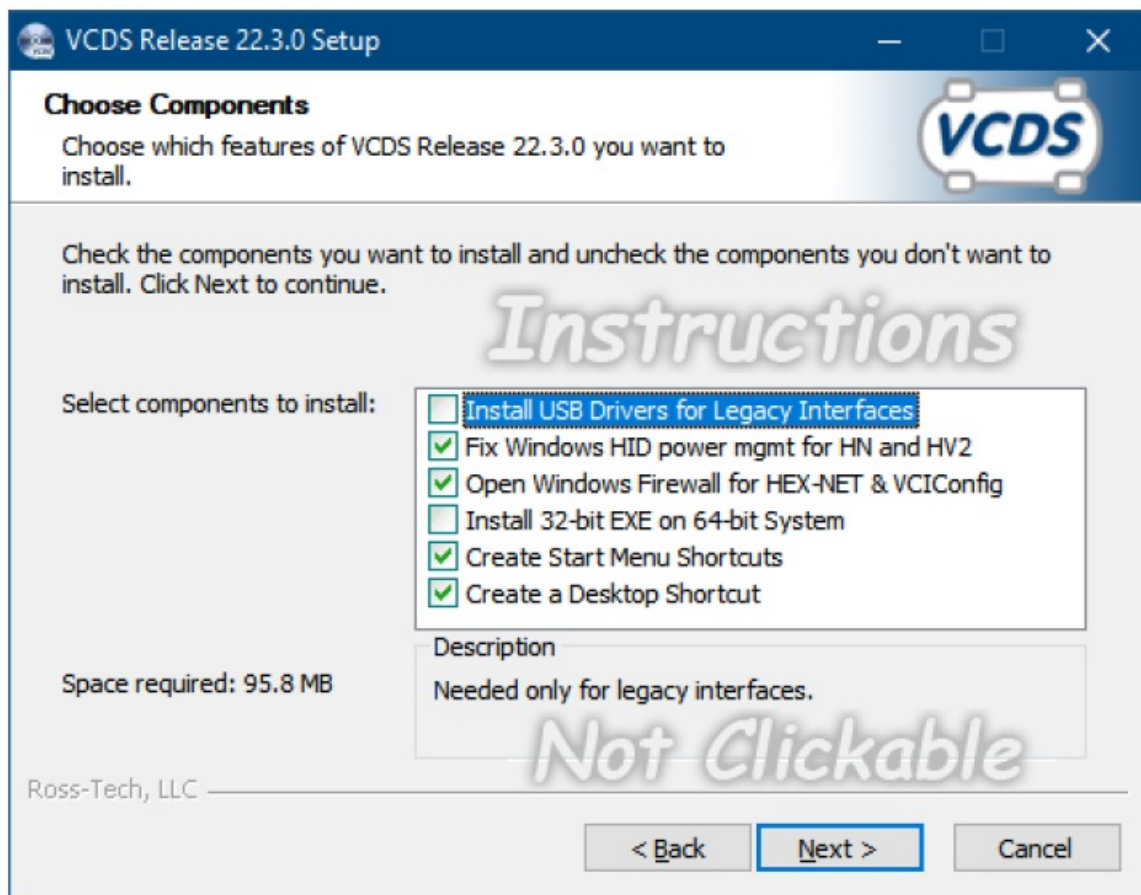


Diagnostic Software for European Automobiles

PLEASE NOTE:

All model-year 2019 and newer cars require one of our current interfaces. Although this Release of VCDS still supports every interface Ross-Tech has sold since 2004, none of our legacy interfaces such as the HEX+CAN and Micro-CAN will work properly with 2019 model cars. If you intend to work with 2019 or newer cars and do not yet have a current interface, please contact your distributor or see this page for upgrade options.

Installation Instructions for VCDS® Release 22.3+



Most users who are installing VCDS do not need to change anything on this screen and can simply click the “Next” button. However, to avoid countless phone calls and e-mails asking what these options do, we present this guide:

Install USB Drivers for Legacy Interfaces

is needed only you’re using any of our older interfaces such as a HEX+CAN, in which case you must manually select it. This option cannot be selected on systems with an ARM-architecture CPU because there are no legacy interface drivers available for those systems

Fix Window HID power management: is only available if the installer is run on Windows 8.1 or Windows 10, where it is selected by default. It is required for the HEX-NET and HEX-V2 interface to communicate reliably via USB on systems running Windows 8.1 or 10.

Open Window Firewall for HEX-NET & VCIconfig: is useful if you will be using either of our current-generation interfaces (HEX-NET or HEX-V2). This option is selected by default will attempt to allow VcDS and Vciconfig to establish outgoing connections from your PC, which are necessary to locate HEX-NET(S) On your network and for firmware updates from our server.

Install 32-bit EXE on 64-bit Systems: can only be selected if your PC is running a 64-bit Windows. The vast majority of users with 64-bit Windows do not need this option and should use the b4-bit EXE files which are installed by default on those systems. However our 64-bit EXE may not work properly on a small percentage of 64-bit systems, and this option gives those users an immediate workaround.

Create Start Menu Shortcuts: is selected by default and will put the usual entries in your Start Menu. However, if you don’t want to clutter up your Start Menu, you can de-select this.


Create a Desktop Shortcut: is selected by default and will put the usual shortcut on your desktop. However, if you don’t want to clutter up your Desktop, you can de-select this. This document is Copyright 2022 by Ross-Tech, LLC, all rights reserved. Unauthorized reproduction and re-distribution s explicitly prohibited.

This document is Copyright 2022 by Ross-Tech, LLC, all rights reserved. Unauthorized reproduction and re-distribution is explicitly prohibited.






Ross-Tech, LLC 881 Sumneytown Pk. Lansdale, PA 19446

- Tel: +1-267-638-2300
- www.Ross-Tech.com

Documents / Resources

	<p>Ross-Tech VCDS Windows-based Diagnostic Software [pdf] Instruction Manual VCDS, Windows-based Diagnostic Software, Diagnostic Software, Windows-based Software, Software, VCDS Diagnostic Software</p>
---	---

References

-  [Ross-Tech: Home](#)
-  [Interface Upgrades | Product categories | Ross-Tech](#)
-  [Ross-Tech: Distributor List](#)
-  [R-T: Memorial Garden](#)
-  [Ross-Tech: Interfaces](#)