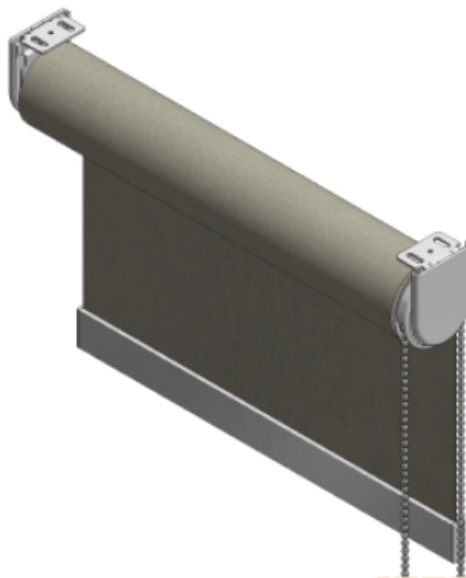


## Roller Shade Open Roll Instructions

[Home](#) » [Roller Shade](#) » Roller Shade Open Roll Instructions 

### Roller Shade Open Roll Instructions



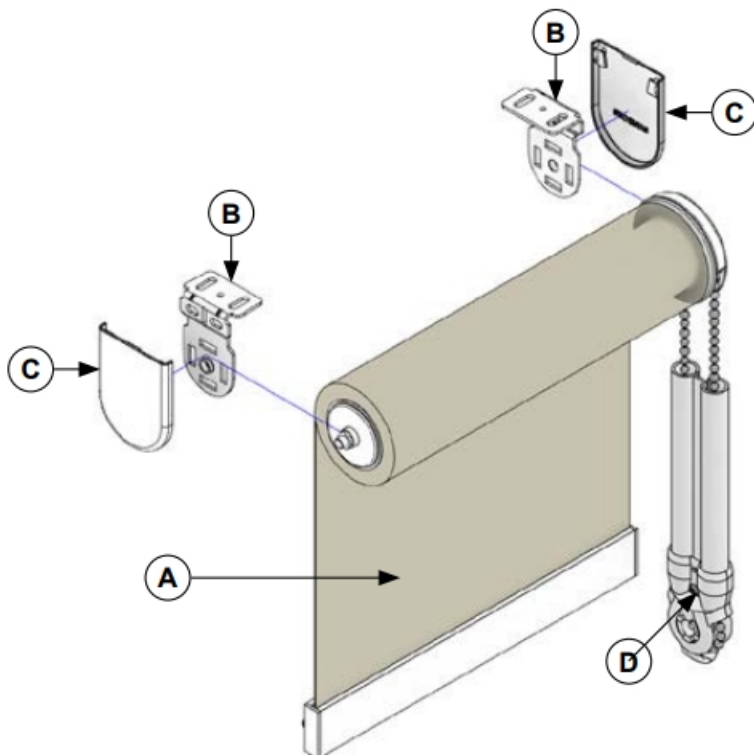
### WARNING

**STRANGULATION HAZARD** — Young children can be strangled by cords. Immediately remove this product if a cord longer than 22 cm or a loop exceeding 44 cm around becomes accessible.

## Contents

- [1 PREPARATION](#)
- [2 MOUNT THE BRACKETS](#)
- [3 INSTALL THE SHADE](#)
- [4 INSTALL BRACKET COVERS \(OPTIONAL\)](#)
- [5 INSTALL THE SAFETY SHIELD](#)
- [6 Zero Gravity Instructions](#)
- [7 Documents / Resources](#)
- [8 Related Posts](#)

## PREPARATION

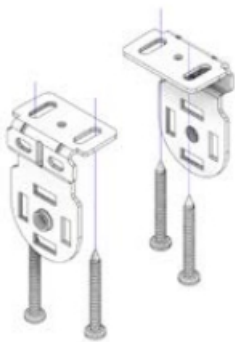


### Component List

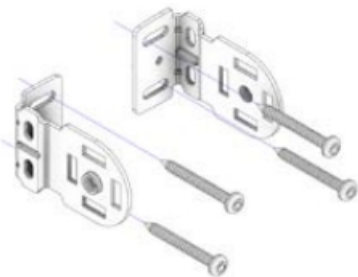
- **A.** Shade
- **B.** Universal Mounting Bracket
- **C.** Bracket Cover (Optional)
- **D.** Safety Shield

## MOUNT THE BRACKETS

- CEILING MOUNT



- WALL MOUNT



- LATERAL MOUNT



## INSTALL THE SHADE

**NOTE:** For shades with Zero Gravity, please refer to the instructions on the following pages

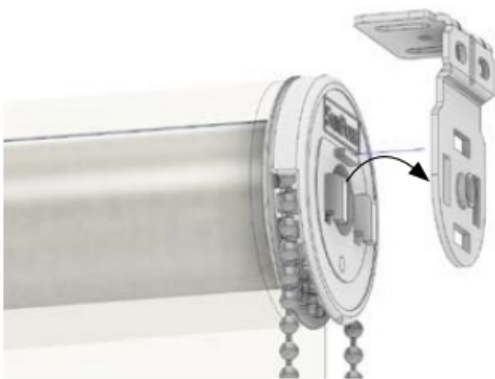
### STEP 3A: INSTALL PIN END

- Install the Pin End into the hole in the bracket.



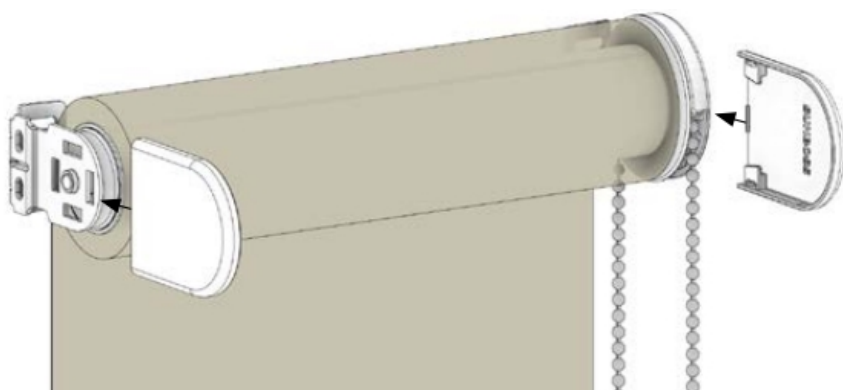
### STEP 3B: INSTALL CLUTCH END

- While keeping pressure against the Pin End hook the clutch onto the other bracket.



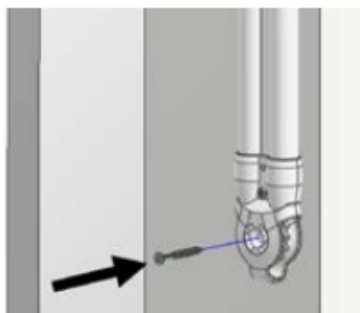
## INSTALL BRACKET COVERS (OPTIONAL)

If you were supplied with bracket covers, slide them on to the mounting brackets.



## INSTALL THE SAFETY SHIELD

**NOTE:** For shades with chain operation only.



## Zero Gravity Instructions

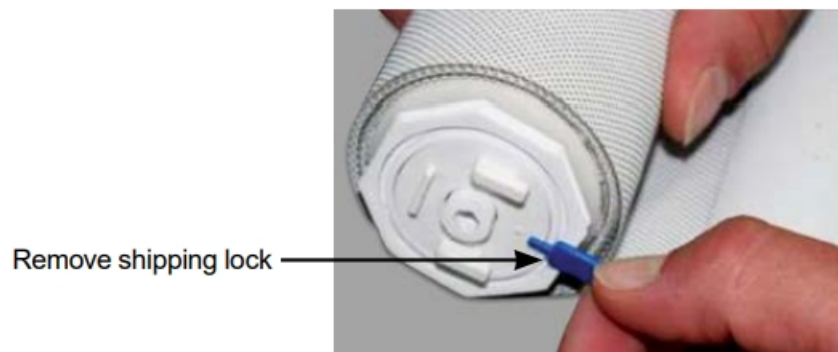
If the Pin End of the shade appears as shown here, proceed with Steps 1,2 & 3 before returning to Step 4 of the Open Roll or Fascia Installation Instructions



If the Pin End of the shade appears as shown here, proceed with Steps 4,5 & 6 before returning to Step 4 of the Open Roll or Fascia Installation Instructions



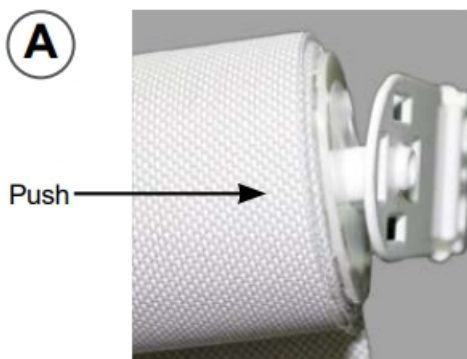
#### REMOVE THE SHIPPING LOCK



#### INSTALL THE SHADE

- (A) Install the Pin End into the hole in the bracket.

**A**



- (B) While keeping pressure against the Pin End hook the clutch onto the other bracket.

**B**

## TEST THE SYSTEM

Draw and raise the shade from the middle of the bottom bar.

To increase tension use the spanner to turn the head in the opposite direction that the fabric falls off of the roll. To decrease tension turn toward the direction that the fabric falls off of the roll.



Adjusting Spanner

## WARNING

- Do not pull pin lock out until shade is installed or tension will be released.
- If tension has been released, see troubleshooting.

## REMOVE RUBBER BAND

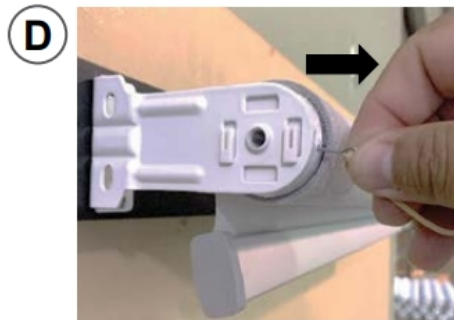
- Remove the rubber band holding the Pin Lock in place.

**A**



## INSTALL SHADE AND REMOVE PIN LOCK

Install the shade while keeping Pin Lock toward you and held in place, then remove the pin lock.



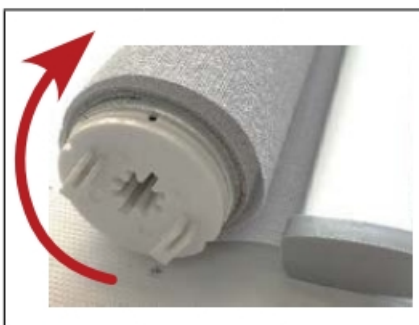
## TESTING THE SYSTEM

- Pull and lift the shade from the middle of the bottom bar.

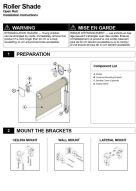


## TROUBLE SHOOTING IF TENSION IS RELEASED

To increase tension, use the spanner to turn the head in the opposite direction that the fabric falls off of the roll (approximately 1 – 2 full rotations). Insert the pin Lock into the hole of the clutch while holding the shade to keep the tension. PROCEED WITH STEP 5 WHEN FINISHED.



Documents / Resources

	<p><a href="#">Roller Shade Roller Shade Open Roll</a> [pdf] Instructions</p> <p>Roller Shade Open Roll, Roller Shade, Open Roll, Roll, Roller Shade Open Roll</p>
---	--