

 ROLL A SHADE

**ROLL A SHADE
RASCP4CMVER.1
Assembled
Cassette with
Shade**



ROLL A SHADE RASCP4CMVER.1 Assembled Cassette with Shade Installation Guide

[Home](#) » [ROLL-A-SHADE](#) » ROLL A SHADE RASCP4CMVER.1 Assembled Cassette with Shade Installation Guide

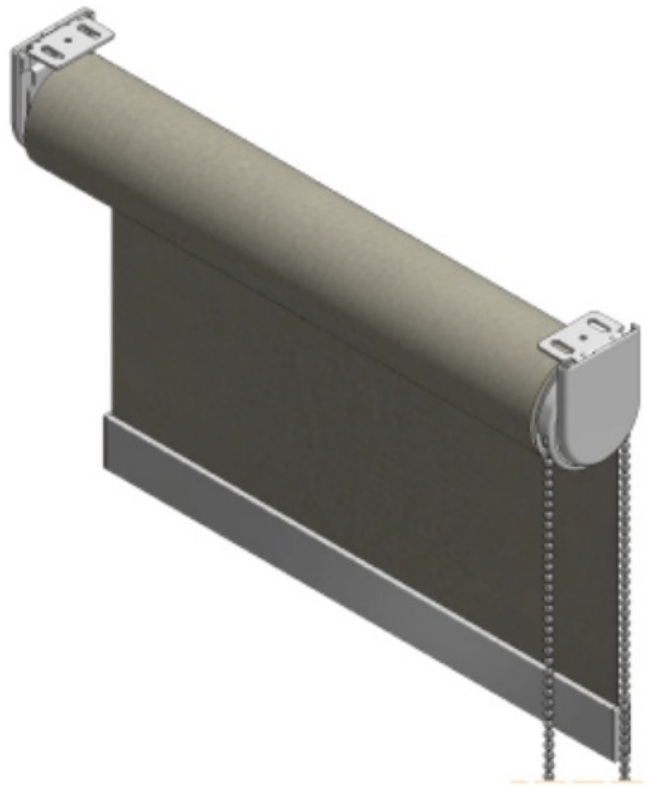


Contents

- [1 ROLL A SHADE RASCP4CMVER.1 Assembled Cassette with Shade](#)
- [2 Product Information](#)
- [3 Hardware Included](#)
- [4 Tools Required](#)
- [5 INSTALLATION](#)
- [6 FAQ](#)
- [7 Documents / Resources](#)
 - [7.1 References](#)

 ROLL A SHADE

ROLL A SHADE RASCP4CMVER.1 Assembled Cassette with Shade

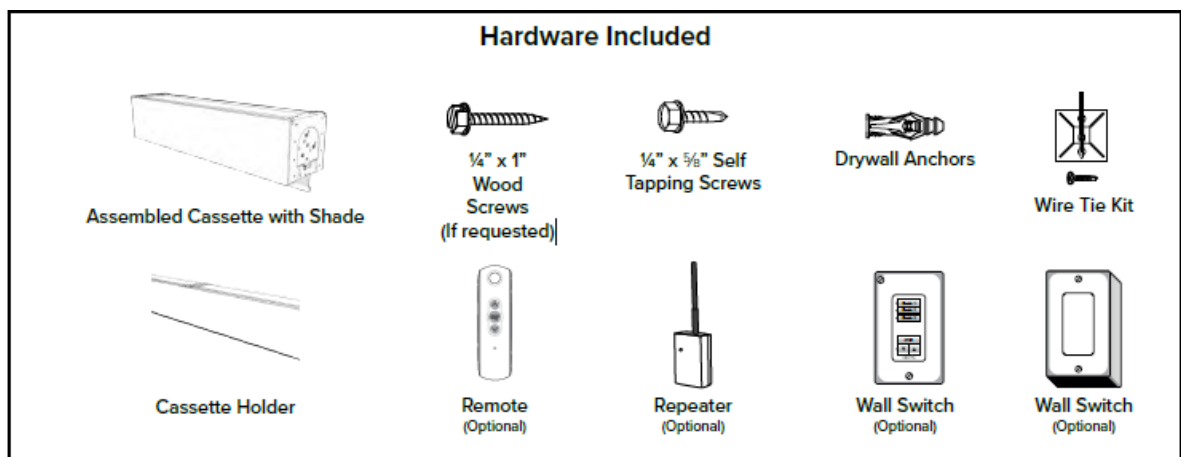


Product Information

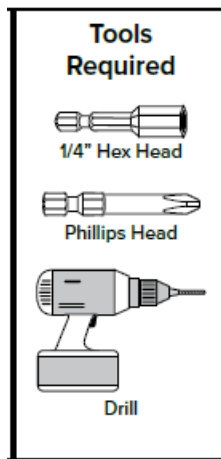
Specifications

- Model: RAS – Contract Plus+ Shade 4 Cassette Motorized UL
- Address: 12101 Madera Way Riverside, CA 92503
- Phone: [888-245-5077](tel:888-245-5077)
- Fax: [951-245-5075](tel:951-245-5075)
- Website: www.rollashade.com.

Hardware Included



Tools Required



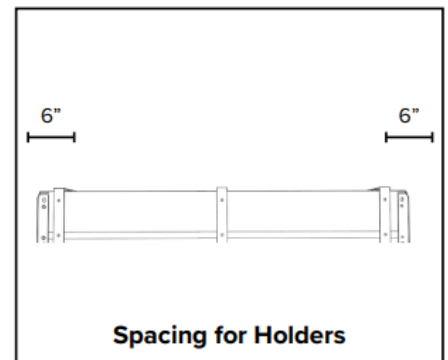
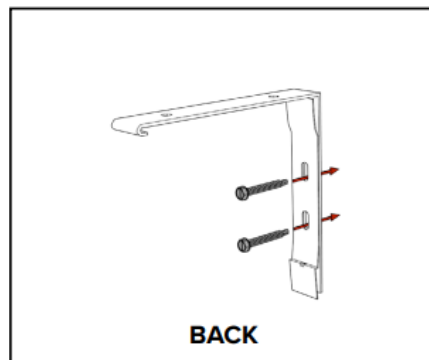
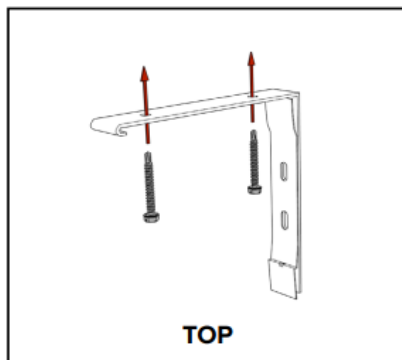
INSTALLATION

1. Install Cassette Holders

Install one cassette holders at each end and the rest spaced evenly across the shade. The edge holder should be as close to the edge as possible and no more than 6" from the edge. Then, install double bearing pin end bracket. Make sure ALL holders are level.

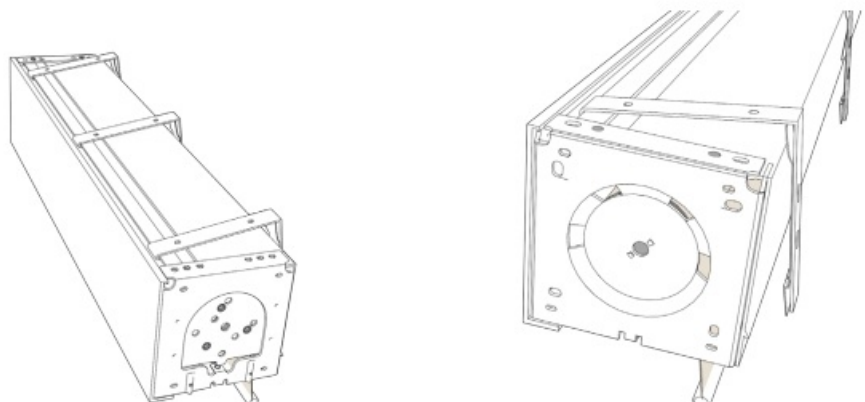
Note: If screws do not secure into stud, use supplied drywall anchors. < 90" = 3 holders

Note: Must be at least two screws in every bracket > 90" = 4 holders



2. Install Cassette

Take assembled cassette and line up the top groove with the top hook. Then push the cassette in until you hear a click.



3. Plug in Motor

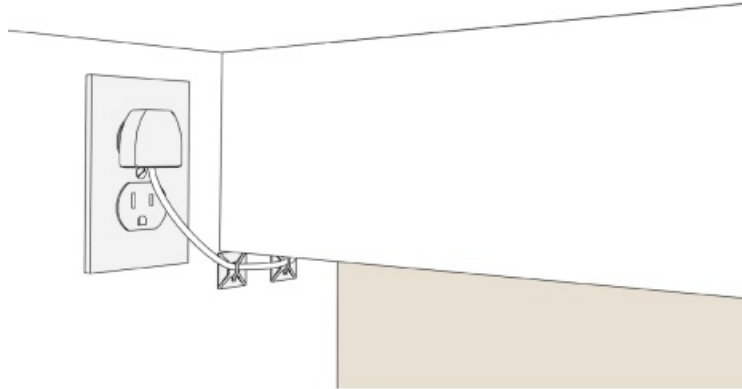
Run motor power cord to nearest power outlet. Install wire tie pads and secure with zip ties to hold wire down. The path of the wire should be parallel with mullions and/or drop ceiling tiles ensuring the cable is neatly organized.

- To reduce the risk of electric shock, this equipment has a grounding type plug, that has a third (grounding)

pin.

- This plug will only fit into a grounding type outlet. If the plug does not fit into the outlet, contact a qualified electrician to install the proper outlet.
- Do not change the plug in any way.
- Do not use an extension cord. If the power supply is too short, have a licensed electrician install an outlet near the drapery operator.

WARNING: Failure to wire as instructed may cause personal injury or damage to device or equipment.



- 12101 Madera Way Riverside, CA 92503
- Phone: [888-245-5077](tel:888-245-5077)
- Fax: [951-245-5075](tel:951-245-5075)
- www.rollashade.com

© Copyright 2025 Roll A Shade® Inc., All rights reserved. – Contractor #916075

FAQ

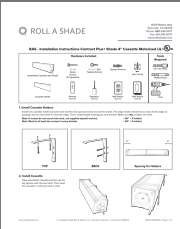
Q: What should I do if the screws do not secure into a stud during installation?

A: Use the supplied drywall anchors to secure the cassette holders in place.

Q: How many screws should be used in each bracket during installation?

A: There must be at least two screws in every bracket to ensure proper installation and stability.

Documents / Resources

	<p>ROLL A SHADE RASCP4CMVER.1 Assembled Cassette with Shade [pdf] Installation Guide RASCP4CMVER.1 Assembled Cassette with Shade, RASCP4CMVER.1, Assembled Cassette with Shade, Cassette with Shade, Shade</p>
---	--

References

-  [Roll A Shade - Commercial Window Shade Solutions](#)

- [User Manual](#)

[Manuals+](#), [Privacy Policy](#)

This website is an independent publication and is neither affiliated with nor endorsed by any of the trademark owners. The "Bluetooth®" word mark and logos are registered trademarks owned by Bluetooth SIG, Inc. The "Wi-Fi®" word mark and logos are registered trademarks owned by the Wi-Fi Alliance. Any use of these marks on this website does not imply any affiliation with or endorsement.