



ROLL-A-SHADE Contract
Plus Open Roll Coupled



ROLL-A-SHADE Contract Plus Open Roll Coupled Instruction Manual

[Home](#) » [ROLL-A-SHADE](#) » ROLL-A-SHADE Contract Plus Open Roll Coupled Instruction Manual 

Contents

- 1 ROLL-A-SHADE Contract Plus Open Roll Coupled
- 2 Product Usage Instructions
- 3 INSIDE OR OUTSIDE APPLICATION
- 4 MOUNTING LOCATION
- 5 SCREW INSTALLATION
- 6 MOTOR END INSTALLATION
- 7 LOCK RING & ADDITIONAL LINKED SHADES
INSTALLATION
- 8 PLUG-IN MOTOR
- 9 SHADE ADJUSTING (IF NECESSARY)
- 10 ADJUSTING LIMITS (IF NECESSARY)
- 11 Documents / Resources
 - 11.1 References
- 12 Related Posts



ROLL-A-SHADE Contract Plus Open Roll Coupled



Product Specifications

- Product Name: Contract Plus+ Open Roll Coupled
- Contact: Rollashade.com | info@rollashade.com | 951.245.5077
- Hardware Included:
 - Motor Bracket
 - Idler End Support Bracket
 - Wall Switch
 - Switch Box
 - #14 Screws
 - Zip Ties
 - Wire Tie Pads
 - Allen Wrench
- Tools Supplied: 3/8 Hex Head Phillips Head, 1/8 Drill Bit, Drill

Product Usage Instructions

Application

Choose whether you want to install the shades inside or outside. Note that all shades can be pre-programmed to sensors, remotes, and/or wall switches upon arrival.

Mounting Location

Place the brackets in their mounting locations and mark the screw holes. Repeat this process for all brackets.

Screw Installation

Pre-drill screw holes using a 1/8 drill bit. Install the brackets using the provided screws and a 1/4 hex head driver.

Alignment

Ensure that all brackets are level and aligned properly.

Motor End Installation

Remove the locking ring, line up the motor bracket, and push the motor into the lock ring securely..

Frequently Asked Questions (FAQ)

Q: Can I install the shades both inside and outside?

A: Yes, you can choose to install the shades either inside or outside based on your preference.

CONTRACT PLUS+ OPEN ROLL COUPLED

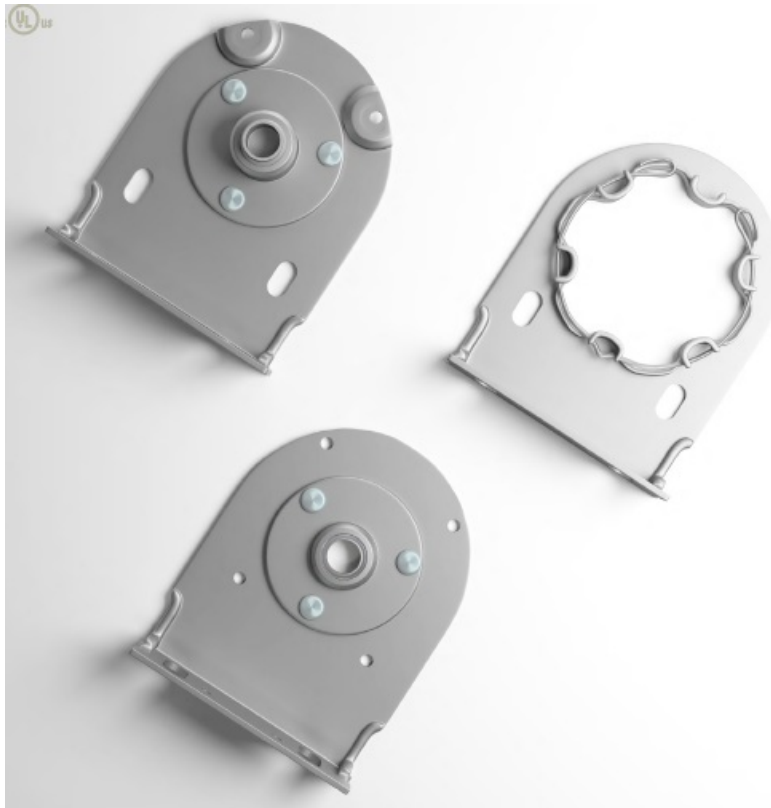
INSTALLATION INSTRUCTIONS

Rollashade.com

info@rollashade.com

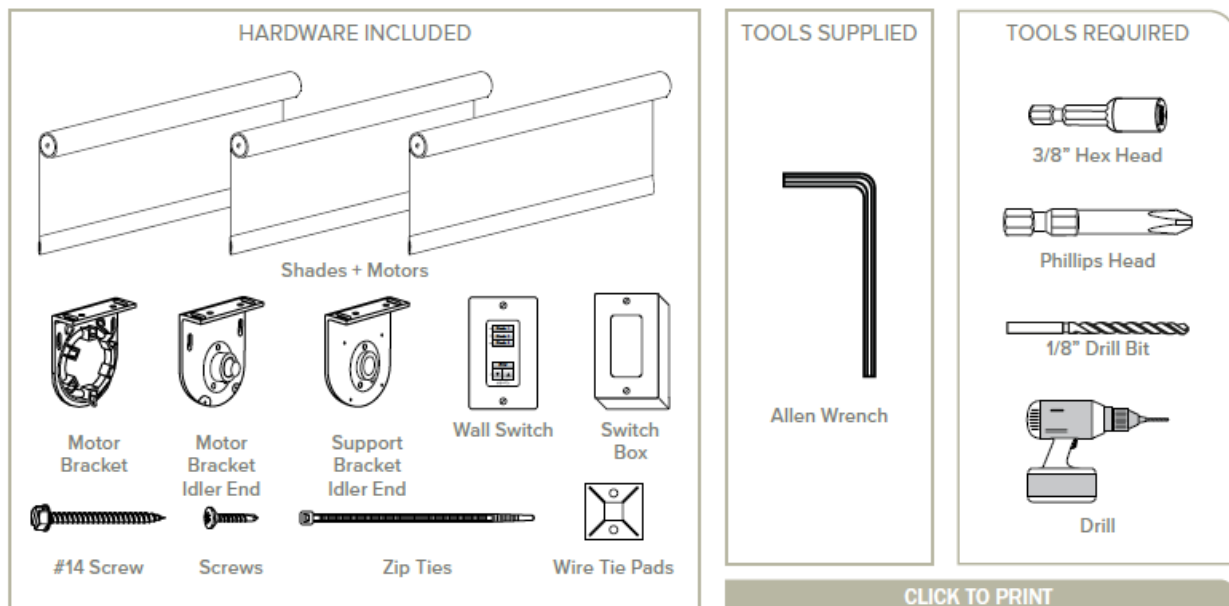
951.245.5077

© Copyright Roll-A-Shade® Inc. All Rights Reserved.



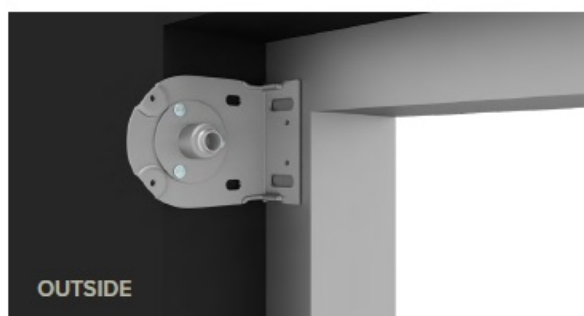
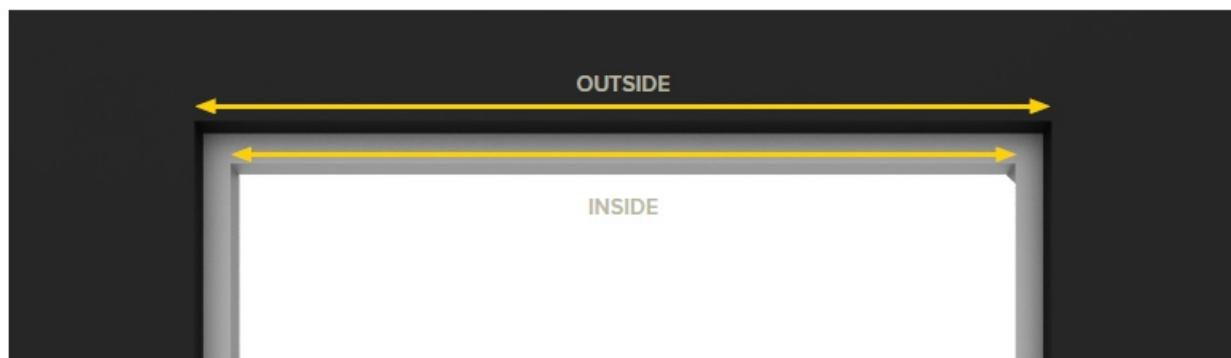
INSIDE OR OUTSIDE APPLICATION

****NOTE: ALL SHADES MAY BE PRE-PROGRAMMED TO SENSORS, REMOTES, AND/OR WALL SWITCHES UPON ARRIVAL****



MOUNTING LOCATION

Place your first bracket in its mounting location and mark the screw holes. Place your brackets in its mounting location and repeat the process.



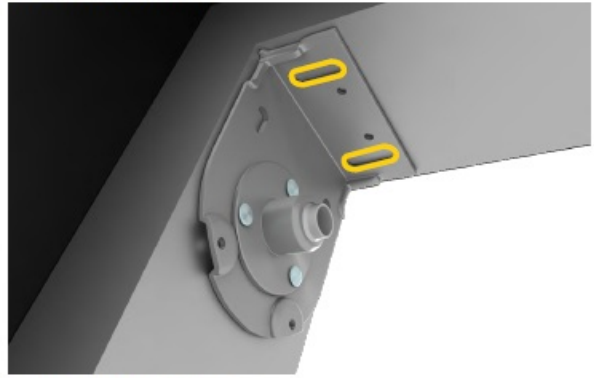
SCREW INSTALLATION

Next, pre-drill your screw holes using a 1/8" drill bit. Install the brackets with the provided screws using the 1/4" hex head driver.

A IDLE BRACKET



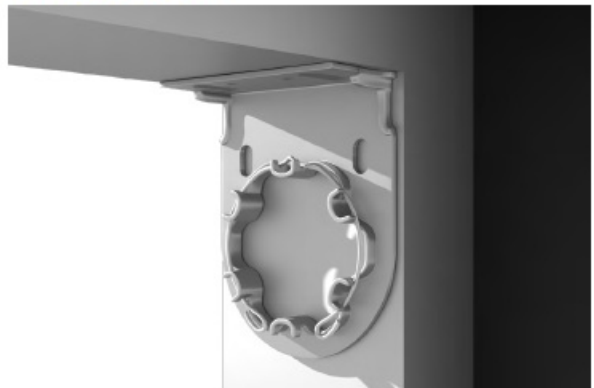
B IDLE BRACKET



C SUPPORT BRACKET

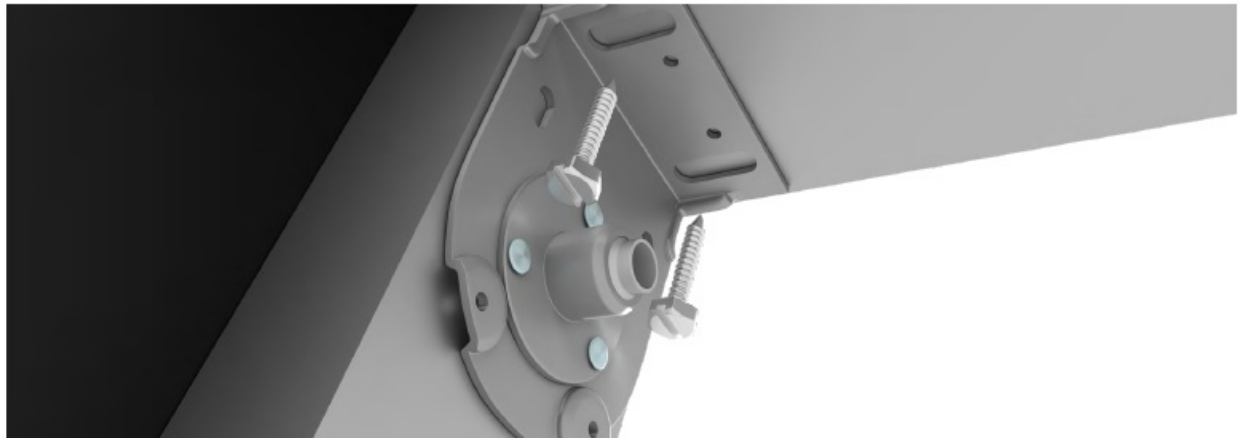


D MOTOR BRACKET



MOTOR END INSTALLATION

Remove locking ring. Lineup to motor bracket. Push motor into Lock Ring properly. A B



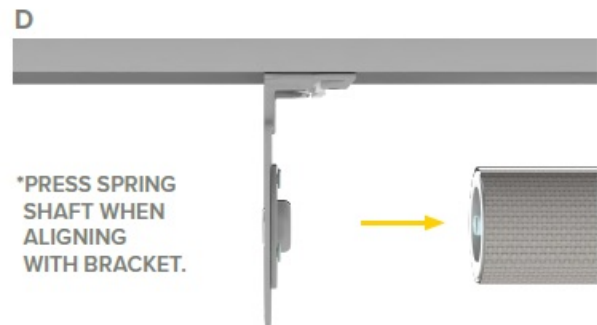
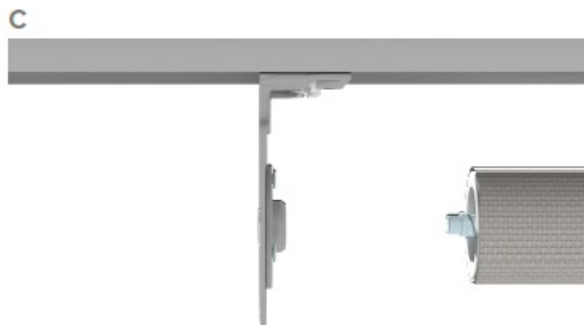
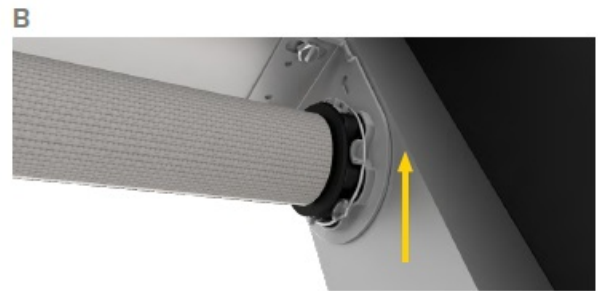
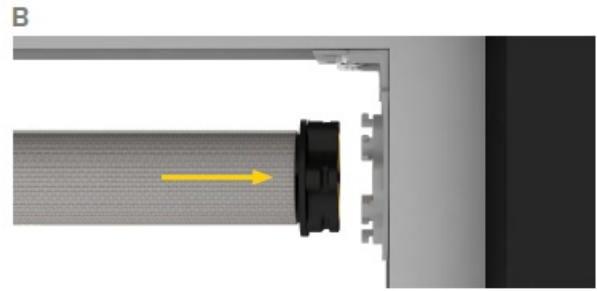
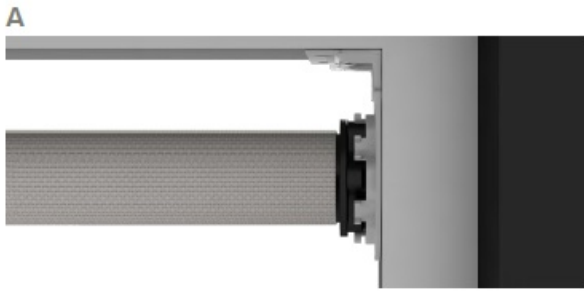
LOCK RING & ADDITIONAL LINKED SHADES INSTALLATION

Add locking ring to motor bracket. Check motor is secured correctly. A B



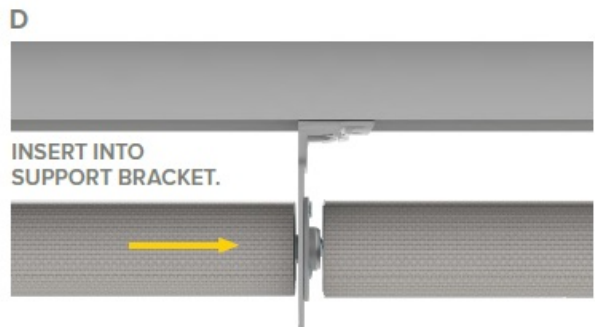
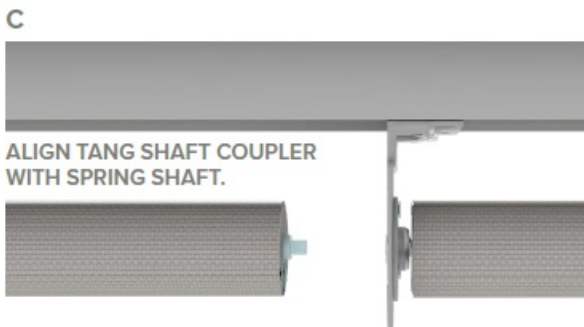
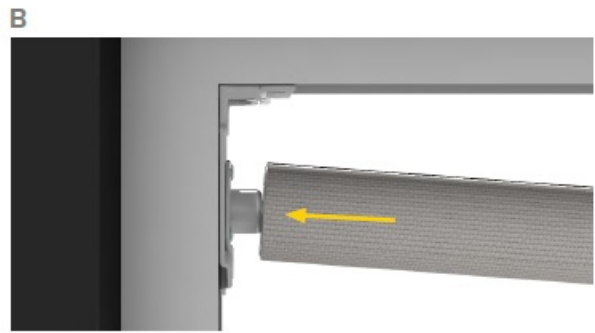
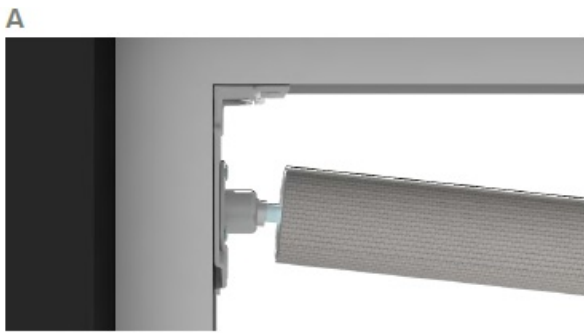
SHADE PIN END INSTALLATION

Swivel ball bearing to align with Idler shaft for easy installation. Press Idler shaft all the way to the Bracket. A B



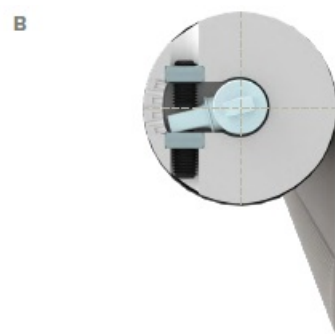
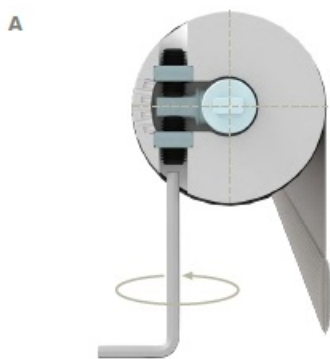
NOTE

No need to disconnect shades to adjust uneven bottom bar. Adjust Screws to level bottom bar. $\pm 1/4"$ Adjustment (total $1/2"$).



PLUG-IN MOTOR

- Run motor power cord to nearest power outlet.
- Install wire tie pads and secure with zip ties to hold wire down.
- The path of the wire should be parallel with mullions and/or drop ceiling tiles ensuring the cable is neatly organized.
- Any modifications to the power cable should be done by a certified electrician to meet your city/state code requirements.



SHADE ADJUSTING (IF NECESSARY)

- Roll shade up and down to confirm hembar is level and material rolls up straight on center tube.

- If the hembar is not level, lower shade until you see the metal tube.
- Add layers of masking tape to the metal tube to the end that is too low until hembar is straight.
- If the material tracks to one side, lower shade until you see the metal tube.
- Add layers of masking tape to the metal tube to the end that is opposite the direction of tracking, until shade rolls up straight.



ADJUSTING LIMITS (IF NECESSARY)

See programming instructions based on the motor used for your application.

RASCPORCMVER.4 6 OF 6 | © Copyright Roll-A-Shade® Inc. All Rights Reserved.

Documents / Resources

 <p>CONTRACT PLUS® OPEN ROLL COUPLED INSTRUCTION MANUAL</p>	<p>ROLL-A-SHADE Contract Plus Open Roll Coupled [pdf] Instruction Manual Contract Plus Open Roll Coupled, Contract Plus, Open Roll Coupled, Roll Coupled</p>
---	--

References

- 🏠 [Roll-A-Shade - Commercial Window Shade Solutions](#)
- [User Manual](#)

[Manuals+](#), [Privacy Policy](#)

This website is an independent publication and is neither affiliated with nor endorsed by any of the trademark owners. The "Bluetooth®" word mark and logos are registered trademarks owned by Bluetooth SIG, Inc. The "Wi-Fi®" word mark and logos are registered trademarks owned by the Wi-Fi Alliance. Any use of these marks on this website does not imply any affiliation with or endorsement.