



ROLL-A-SHADE Contract Plus 4 Inch Bottom Fascia Installation Guide

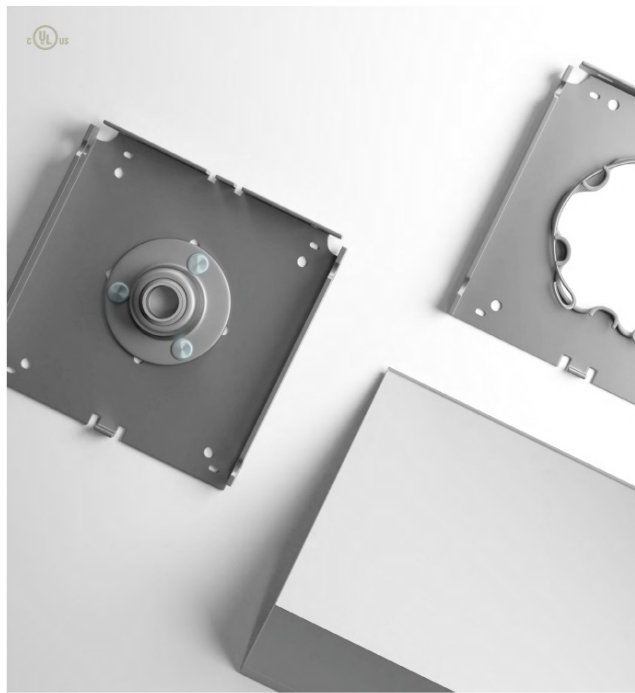
[Home](#) » [ROLL-A-SHADE](#) » ROLL-A-SHADE Contract Plus 4 Inch Bottom Fascia Installation Guide 

Contents

- [1 ROLL-A-SHADE Contract Plus 4 Inch Bottom Fascia](#)
- [2 Product Usage Instructions](#)
- [3 HARDWARE INCLUDED](#)
- [4 TOOLS REQUIRED](#)
- [5 INSIDE OR OUTSIDE APPLICATION](#)
- [6 MOUNTING LOCATION](#)
- [7 SCREW INSTALLATION](#)
- [8 PLUG IN MOTOR](#)
- [9 Documents / Resources](#)
 - [9.1 References](#)
- [10 Related Posts](#)



ROLL-A-SHADE Contract Plus 4 Inch Bottom Fascia



Specifications

- Product Name: CONTRACT PLUS+ 4 BOTTOM FASCIA
- Manufacturer: [Rollashade.com](https://rollashade.com)
- Contact: info@rollashade.com | 951.245.5077

Product Usage Instructions

Installation

Before starting the installation process, ensure you have all the hardware included in the package:

- Bracket Covers
- Motor Bracket
- Motor Bracket Idler End
- #14 Screw Screws
- Shades + Motors
- Fascia
- Zip Ties
- Wire Tie Pads
- Wall Switch
- Switch Box

Tools Required

- 3/8 Hex Head Phillips Head Drill Bit
- Drill

Mounting Location

Determine whether you are installing the product inside or outside. Place the brackets in their mounting locations

and mark the screw holes accordingly.

1. Screw Installation

Pre-drill the screw holes using a 1/8 drill bit and secure the brackets using the provided screws and a 1/4 hex head driver.

2. Alignment

Ensure that the brackets are level and aligned correctly.

3. Shade Pin End Installation

Align the swivel ball bearing with the idler shaft for easy installation. Press the idler shaft all the way to the bracket.

4. Motor End Installation

Remove the locking ring, line up the motor with the motor bracket, and push the motor into place.

5. Lock Ring & Fascia Installation

Add the locking ring to the motor bracket, check motor security, and install the bottom fascia.

6. Plug In Motor

Ensure to plug in the motor following your city/state code requirements.

7. Shade Adjusting

If necessary, adjust the shade by guiding it in the desired direction of tracking until it rolls up straight.

8. Adjusting Limits

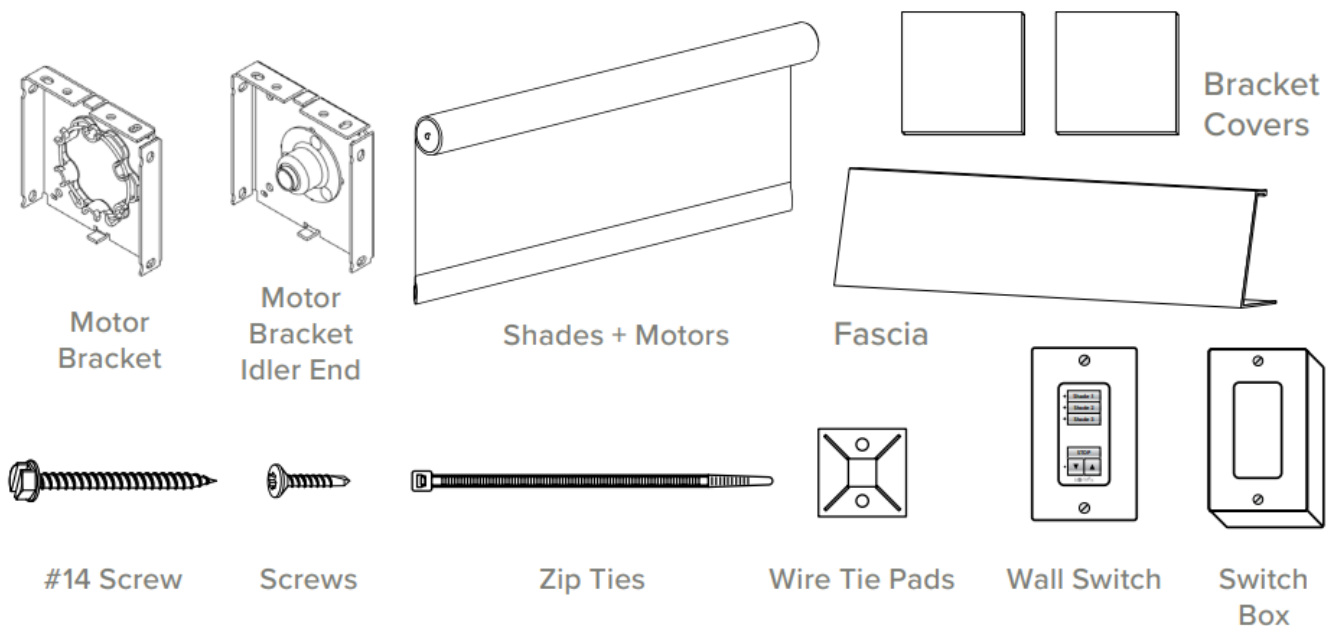
Refer to the programming instructions based on the motor used for your specific application to adjust limits if necessary.

FAQ

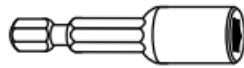
Q: Can all shades be pre-programmed to sensors, remotes, and/or wall switches upon arrival?

A: Yes, all shades may be pre-programmed upon arrival to suit your needs.

HARDWARE INCLUDED



TOOLS REQUIRED



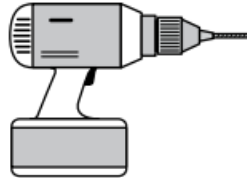
3/8" Hex Head



Phillips Head



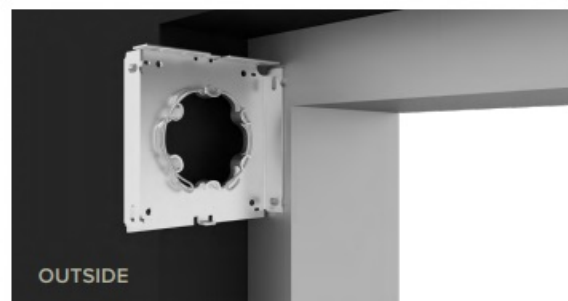
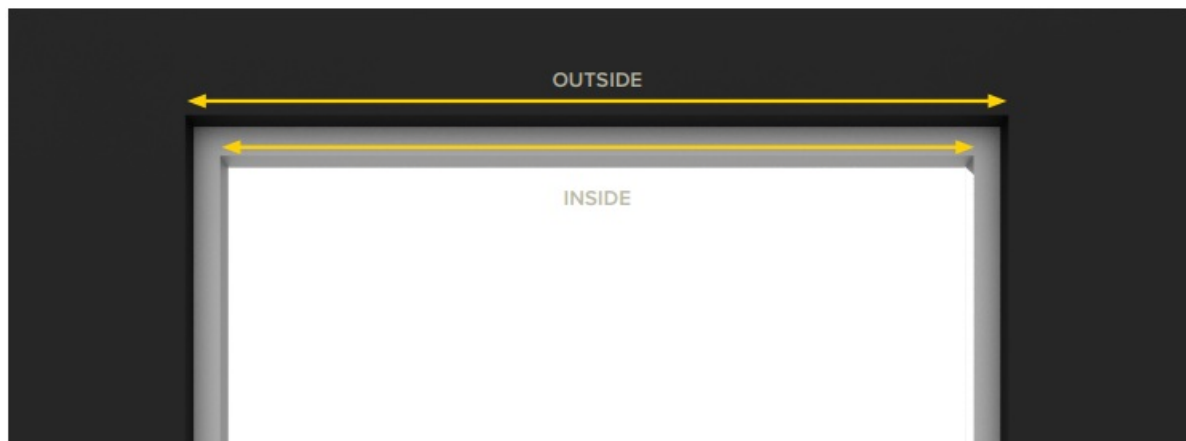
1/8" Drill Bit



Drill

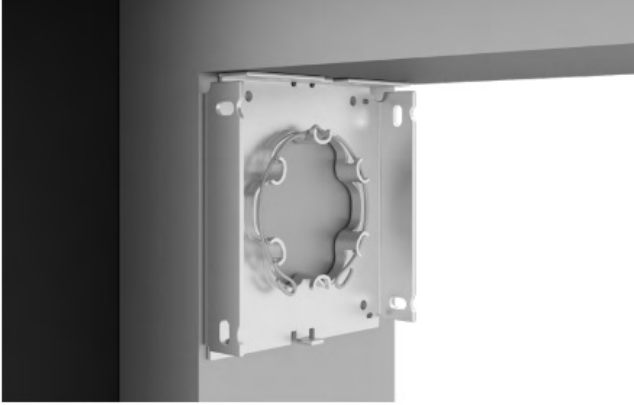
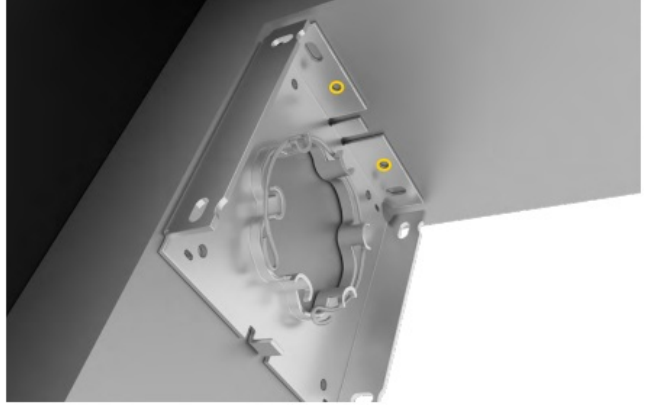
INSIDE OR OUTSIDE APPLICATION

****NOTE:** ALL SHADES MAY BE PRE-PROGRAMMED TO SENSORS, REMOTES, AND/OR WALL SWITCHES UPON ARRIVAL**



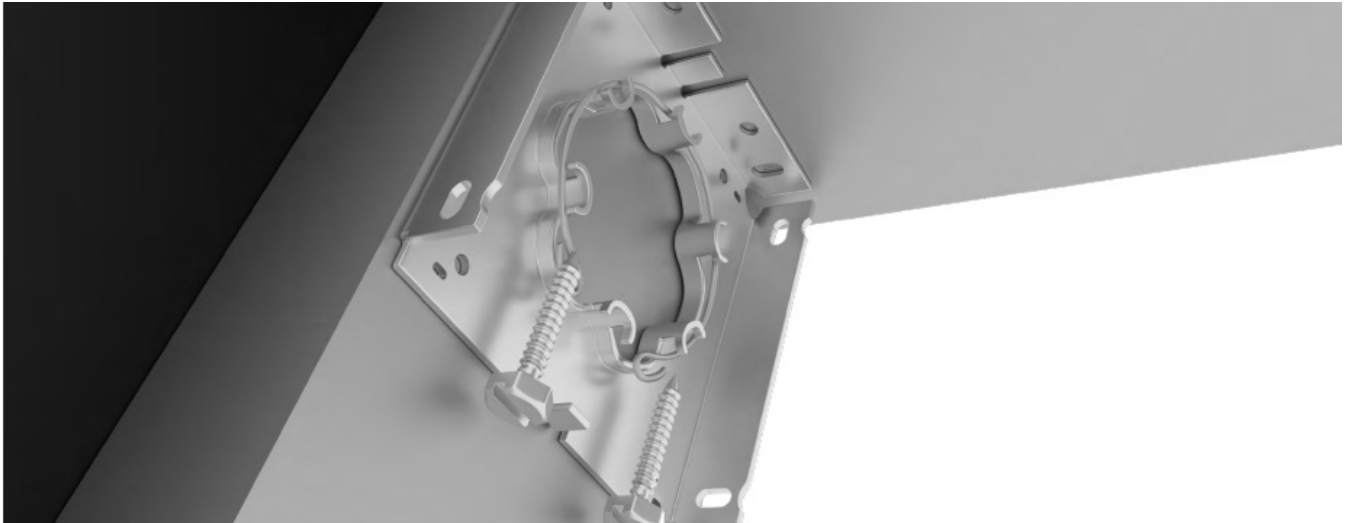
MOUNTING LOCATION

Place your first bracket in its mounting location and mark the screw holes. Place your second bracket in its mounting location and repeat the process.

A**B****C**

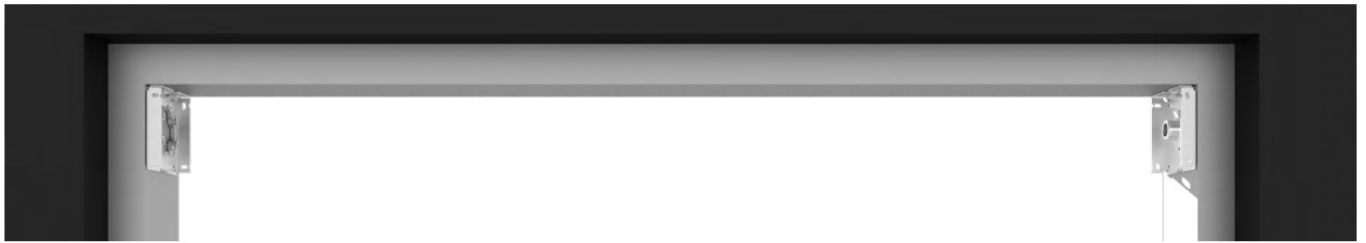
SCREW INSTALLATION

Next, pre-drill your screw holes using a 1/8" drill bit. Install the brackets with the provided screws using the 1/4" hex head driver.



ALIGNMENT

Check to make sure your brackets are level and aligned.



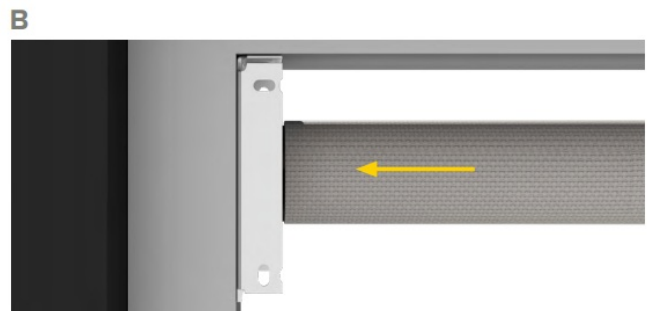
SHADE PIN END INSTALLATION

Swivel ball bearing to align with idler shaft for easy installation. Press idler shaft all the way to the bracket. A B



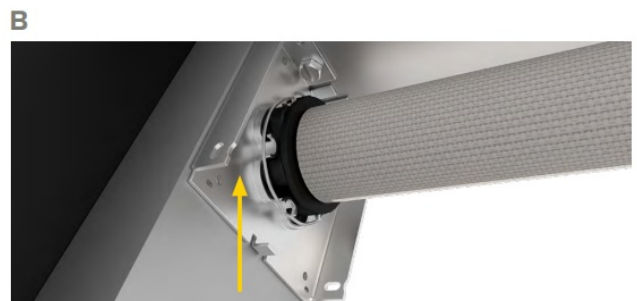
MOTOR END INSTALLATION

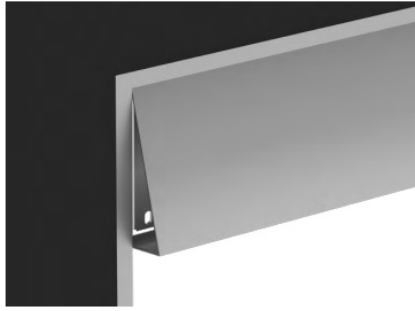
Remove locking ring. Lineup to motor bracket. Push motor into motor bracket. A B



LOCK RING & FASCIA INSTALLATION

Add locking ring to motor bracket. Check motor is secured correctly. Install bottom fascia. A B



C**D****E**

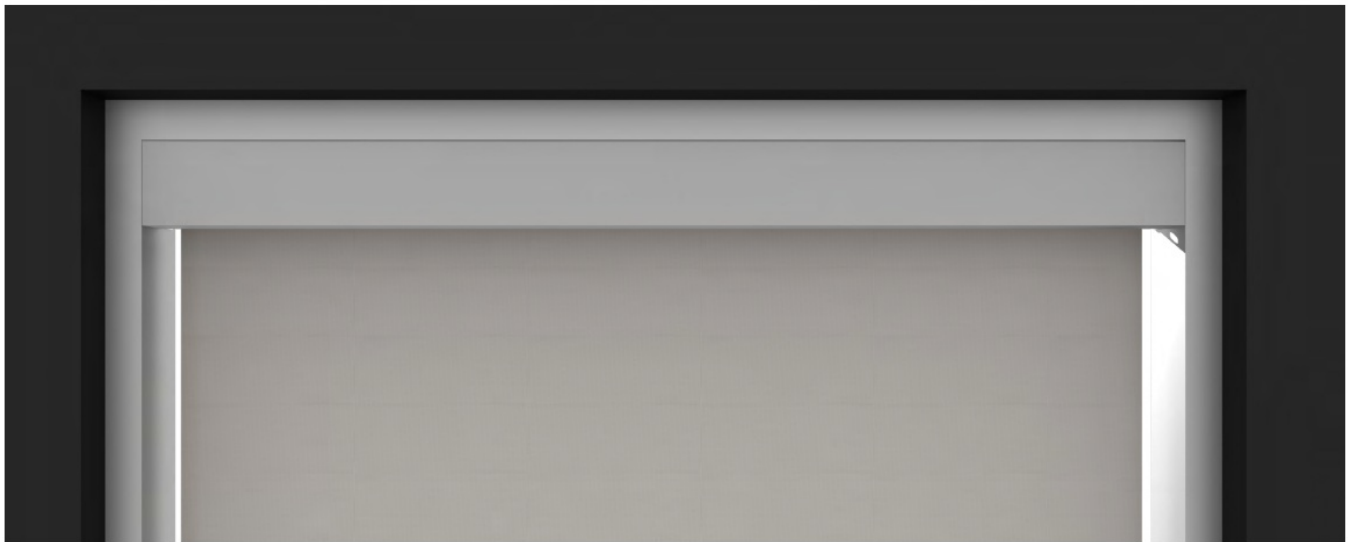
PLUG IN MOTOR

- Run motor power cord to nearest power outlet.
- Install wire tie pads and secure with zip ties to hold wire down.
- The path of the wire should be parallel with mullions and/or drop ceiling tiles ensuring the cable is neatly organized.
- Any modifications to the power cable should be done by a certified electrician to meet your city/state code requirements.



SHADE ADJUSTING (IF NECESSARY)

- Roll shade up and down to confirm hembar is level and material rolls up straight on center tube.
- If the hembar is not level, lower shade until you see the metal tube.
- Add layers of masking tape to the metal tube to the end that is too low until hembar is straight.
- If the material tracks to one side, lower shade until you see the metal tube.
- Add layers of masking tape to the metal tube to the end that is opposite the direction of tracking, until shade rolls up straight.



ADJUSTING LIMITS (IF NECESSARY)

See programming instructions based on the motor used for your application.

Documents / Resources



CONTRACT PLUS® 4" BOTTOM FASCIA
INSTALLATION INSTRUCTIONS

[ROLL-A-SHADE Contract Plus 4 Inch Bottom Fascia](#) [pdf] Installation Guide
Contract Plus 4 Inch Bottom Fascia, Contract Plus, 4 Inch Bottom Fascia, Bottom Fascia

References

- [🐞 Roll-A-Shade - Commercial Window Shade Solutions](#)
- [User Manual](#)

Manuals+. [Privacy Policy](#)

This website is an independent publication and is neither affiliated with nor endorsed by any of the trademark owners. The "Bluetooth®" word mark and logos are registered trademarks owned by Bluetooth SIG, Inc. The "Wi-Fi®" word mark and logos are registered trademarks owned by the Wi-Fi Alliance. Any use of these marks on this website does not imply any affiliation with or endorsement.