



ROLINE 26.11.0351 Cat.6 Class E 19 Patch Panel Instruction Manual

[Home](#) » [ROLINE](#) » ROLINE 26.11.0351 Cat.6 Class E 19 Patch Panel Instruction Manual 

ROLINE 26.11.0351 Cat.6 Class E 19 Patch Panel Instruction Manual



Contents

- [1 Installation Instruction](#)
- [2 Documents / Resources](#)
 - [2.1 References](#)
- [3 Related Posts](#)

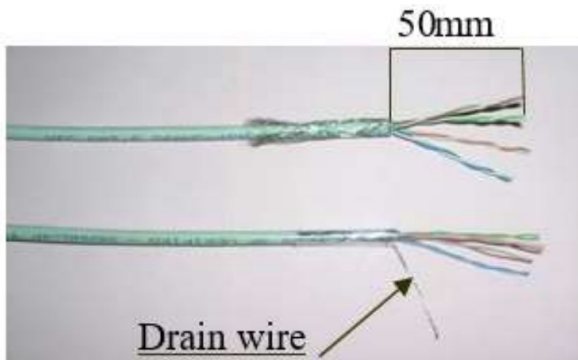
Installation Instruction

1. Load down the screws and open the metal cover.

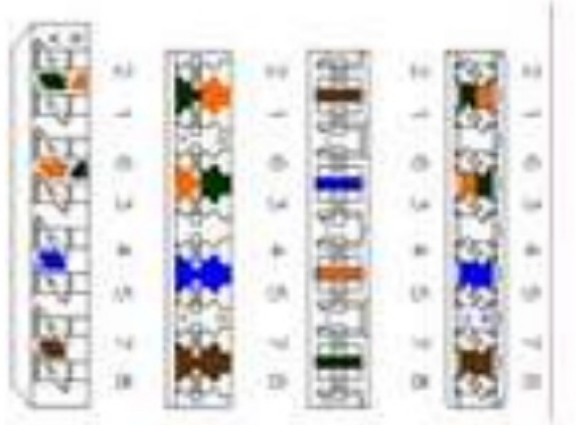


2. Strip approximately 50mm from the cable jacket, fold back the foil or braid shield, and separate the wire into 4

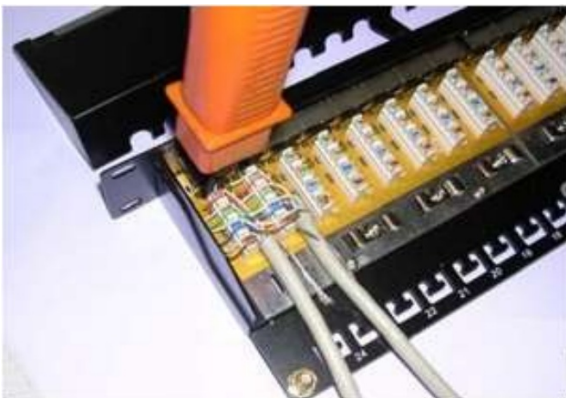
pairs each



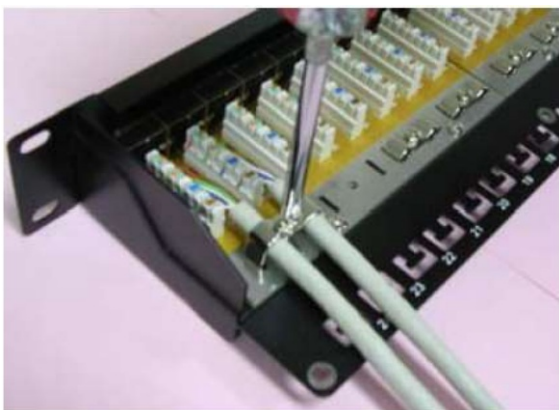
3. Follow the direction on the color-coding sticker to position T568A or T568B wiring, separate a little space on proper position and insert the wire pair by pair into each slot.



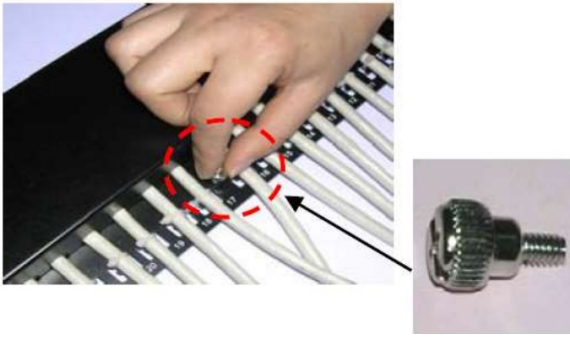
4. Press foil or braid shield to contact ground, and keep the cable straight.



5. Fasten the screws through metal case to hold tightly down for two cable jackets in the same time.



6. Place the metal cover onto the bottom case and fasten the screws



7. Then complete the installation.



Documents / Resources

	<p>ROLINE 26.11.0351 Cat.6 Class E 19 Patch Panel [pdf] Instruction Manual 26.11.0351, 26.11.0361, 26.11.0351 Cat.6 Class E 19 Patch Panel, Cat.6 Class E 19 Patch Pa nel, E 19 Patch Panel, Patch Panel</p>
--	--

References

- [User Manual](#)