



RoHS USB Professional Recording Microphone Instruction Manual

[Home](#) » [RoHS](#) » RoHS USB Professional Recording Microphone Instruction Manual 

*RoHS USB Professional Recording
Microphone Instruction Manual*

USB professional recording microphone

Instruction Manual



RoHS
Made in China



Contents

- [1 Microphone Installation](#)
- [2 Features](#)
- [3 Specifications](#)
- [4 Microphone setup](#)
- [5 Power requirements](#)
- [6 Set your input level](#)
- [7 General operation cont](#)
- [8 NOTE](#)
- [9 WARRANTY](#)
- [10 Documents / Resources](#)
- [11 Related Posts](#)

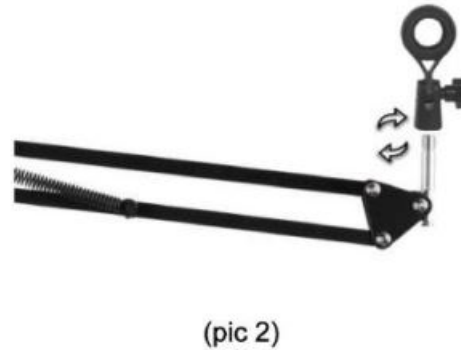
Microphone Installation

A. For the Stand Kit

1. Mounting the clamp of the arm stand to the table like (pic 1)



2. Fit the microphone holder to the arm stand like (pic 2)



3. Install the pop filter like (pic 3)



4. Install the microphone like (pic 4)

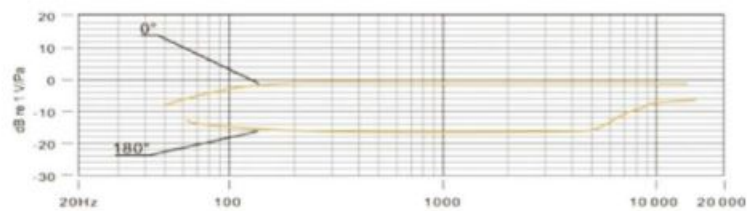


Features

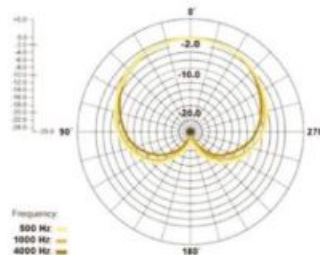


Specifications

Frequency Response: 20 Hz~20 kHz
 Polar Pattern: Cardioid
 Max. SPL: 115dB
 S/N Ratio: 78dB
 Sensitivity: 25 mV/Pa(-36dB+2db)
 USB Cable: USB-A to USB-B audio cable
 Power Supply: USB DC5V
 Cable Length: 1.5m
 Sample Rate: 48kHz/16bit
 Maximum Input Sound Level: 104DB
 Dynamic Range: 117db(1khz. <1%T.H.D)



Polar Responses



Microphone setup



1. Plug one end of the USB cable into the USB port of the microphone and connect the other end to the computer. After connecting the audio cable, you can start working directly.
2. If you need volume control, turn the knob to the right.

Power requirements

1.The microphone is powered by your device's USB port, meaning that in most instances you can just plug the microphone in and get started right away. For non-standard USB ports, a powered USB hub may be required. The is a "Plug & Play" USB device, compatible with both Windows and Mac computers.

2.IT is a "plug/play" USB device, compatible with both windows and Mac computers. Placement of the Microphone and relative to the vocalist may by varied on several factors including room acoustics, the vocal performance, and whether the vocalist has a high or deep voice.

3.An ideal starting point for the reference is to place MIC directly in front of the lead singer. 15 cm(6") distance.

Moving the vocalist a little closer will make the vocal sound more intimate and full, while moving the vocalist back will give the vocal a little more 'air' or room sound, and will reduce the proximity effect (increased bass or low frequency response when the sound source is very close).

4. Experimentation should be made with the angle from which the microphone is addressed, as different results can be achieved.

Set your input level

The microphone has been set to an ideal internal gain setting. If you need to set your preferred sensitivity to the microphone and listen to the earphone's sound size, please follow the following steps:

1. Check the hardware devices on the computer to see if there are any USB AUDIO devices.
2. Open the computer AUDIO equipment and input the AUDIO input terminal (i. e. microphone input). Select: "USB AUDIO microphone input device", Select "USB AUDIO headset device" at the output (that is, headphone listening); In this way, the desktop microphone can be input to the computer in the early morning, computer voice output to the headset;
3. The sensitivity of the microphone can be adjusted in real time through the sound card attribute microphone. It can be adjusted well according to personal preference.
4. Can monitor the size through the total volume of the computer;
5. If the desktop microphone is used alone, the original sound card device can be disabled on the computer device to prevent conflicts;
6. If the computer cannot recognize the desktop microphone, choose to disable the original sound card The device must be "USB AUDIO" or other names can be displayed to uninstall the device driver.
7. If the sound is low, please check whether the sound volume of each sound card software property is adjusted;
8. The volume of microphone can be adjusted by the knob in front of the desktop microphone.

General operation cont

To manually adjust your input level via your computer's system preferences, use the following instructions relevant to your device platform/operating system. Adjusting the input level on a Mac OS computer:

1. Click on the Apple symbol at the top left of your screen and select System Preferences.

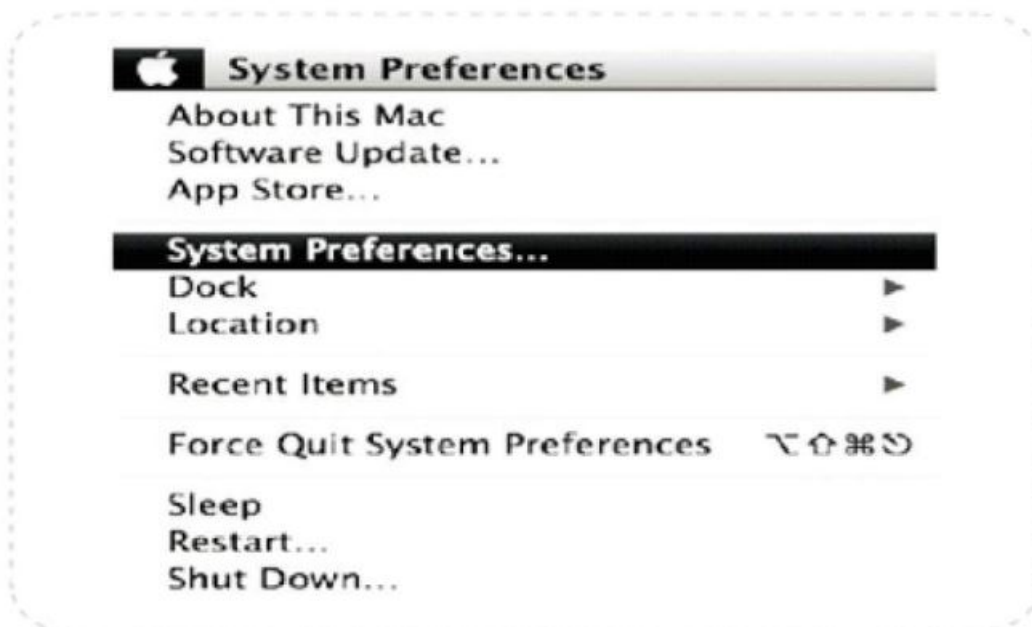


Diagram 5 - Accessing Mac OS System Preferences

2. Click on 'Sound' to Open the sound Options

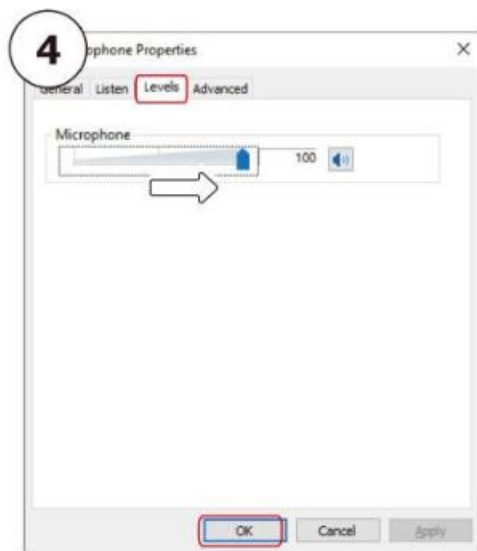
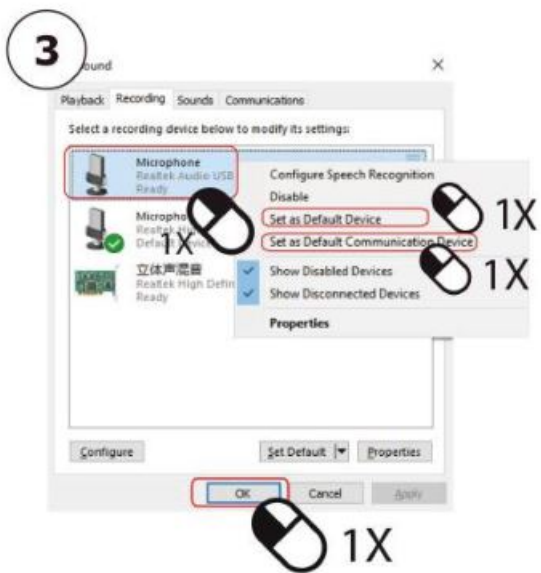


Diagram 6 - Opening 'Sound' options

3. Open the 'Input tab'.

4. From here, select the 'USB AUDIO' from the list devices, and adjust the input level using the slider.

Windows 10,8,7




NOTE

1. Do not cover the microphone grille with your hand.
2. Regular maintenance is recommended to avoid electricity erratic and acoustic problems.
3. This product is not compatible with all series products of Nintendo and xbox.
4. This product is compatible with genuine devices, and pirated devices are not guaranteed to work normally.

WARRANTY

Thank you for purchasing USS Microphone. The product is warranty for one year. If you have any question of your order, please kindly contact us by email(through Amazon buyer email box). Our customer service will reply you asap in 12 hours after received your email.

Documents / Resources

	<p>RoHS USB Professional Recording Microphone [pdf] Instruction Manual</p> <p>USb Professional Recording Microphone</p>
---	---