



ROHM RKX-EVK-001 Accelerometer Evaluation Kit User Guide

[Home](#) » [ROHM](#) » ROHM RKX-EVK-001 Accelerometer Evaluation Kit User Guide 

ROHM RKX-EVK-001 Accelerometer Evaluation Kit User Guide



KXTJ3-1057-EVK-001 is an evaluation board for KXTJ3-1057 accelerometer. This User's Guide will show how to use KXTJ3-1057-EVK-001 together with Accelerometer Evaluation Kit that is sold as RKX-EVK-001.

Preparation

- KXTJ3-1057-EVK-001 1pc
- RKX-EVK-001 1pc

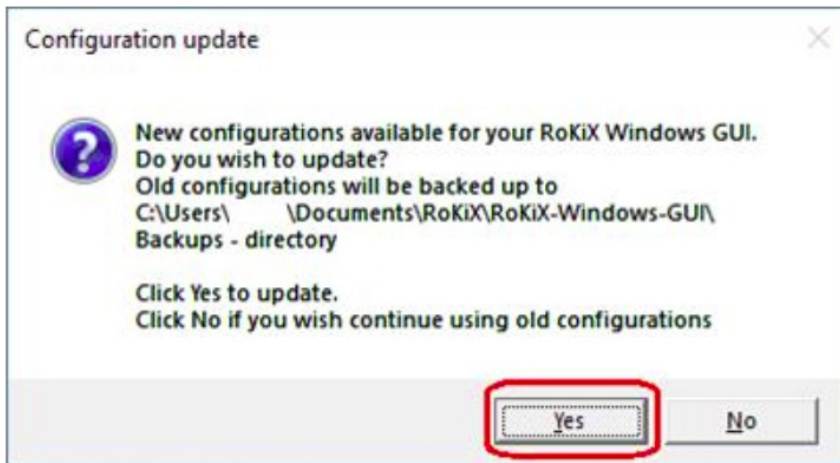
Contents

- 1 Setting
- 2 Measurement
- 3 Board Information
- 4 Documents / Resources
 - 4.1 References
- 5 Related Posts

Setting

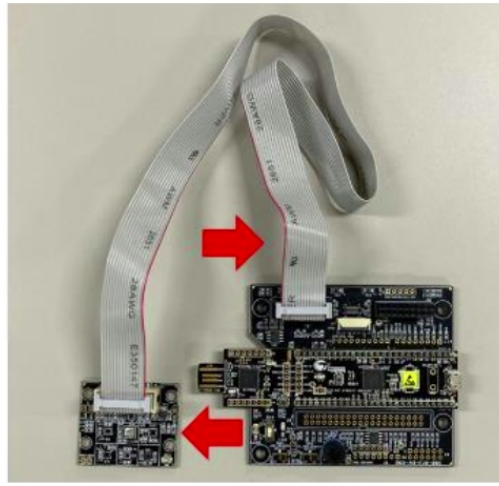
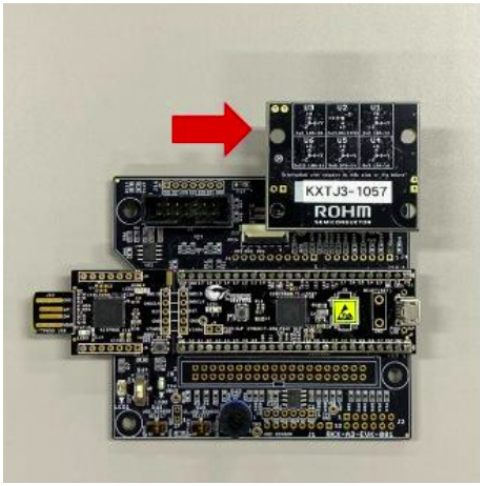
1. Download and Install the latest release of the RoKiX Windows GUI following this link:
<https://www.rohm.com/support/accelerometer-evk-support> Note: After installation, the shortcuts to the RoKiX Windows GUI and to the RoKiX Development Kit User's Guide can be found on the desktop, in the Windows Start menu under RoKiX folder, and in the installation directory: \Documents\RoKiX\
2. Start RoKiX Windows GUI. If Configuration update pop-up window is shown, click Yes to download the latest configurations from the server.

Figure 1. Configuration update pop-up window



3. (Optional) The CY8CKIT-059 PSoC® 5LP Prototyping Kit comes preloaded with the custom firmware when purchased as part of RKX-EVK-001. The latest version of the firmware can be found in the installation directory: \Documents\RoKiX\RoKiX-Firmware\Cypress-PSoC
Note: The guide for programming the custom firmware to the Cypress CY8CKIT-059 PSoC® 5LP Prototyping Kit can be found in the RoKiX Development Kit User's Guide.
4. Connect KXTJ3-1057-EVK-001 to RKX-EVK-001 directly to the 18-pin header J6 or using the provided ribbon cable.

Figure 2. KXTJ3-1057-EVK-001 connection



5. Connect the CY8CKIT-059 to the PC using the provided micro-USB cable to establish the connection with RoKiX Windows GUI.

Note: With Windows 10, the operating system should automatically use the correct driver. For the earlier Windows versions, please follow the driver installation procedure in the RoKiX Development Kit User's Guide.

Measurement

Start the RoKiX Windows GUI software and adjust your settings as follows to get the device connected:

1. Select the board configuration from the Board menu: CY8CKIT-059 / RoKiX adapter A3 / I2C
2. Select the desired configuration stream for the corresponding accelerometer sensor from the Stream menu:
e.g.: KXTJ3 / Accel data 100Hz $\pm 8g$ high resolution
3. If the settings are adjusted properly, data streaming should start automatically, and the on-screen output should display real time output for X, Y, and Z axes of KXTJ3-1057 sensor

Figure 3. Example RoKiX Windows GUI software window



4. For additional details about the RoKiX Windows GUI software, please see the RoKiX Development Kit User's Guide

Board Information

TOP BOTTOM

Figure 4. Picture of the accelerometer board

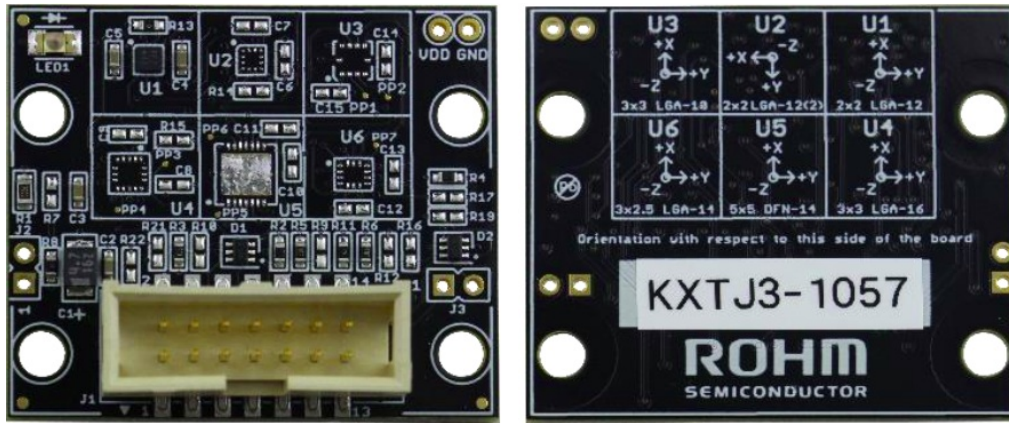


Table 1. Build of Materials for KXTJ3-1057-EVK-001

| Part number | Description / Function |
|-------------|---|
| C1 | Bulk capacitor for VDD (4.7 μ F) |
| C2 | Noise decoupling capacitor for VDD (0.1 μ F) |
| C3 | Noise decoupling capacitor for IO_VDD (0.1 μ F) |
| C4 | U1 bypass capacitor for VDD (0.1 μ F) |
| C5 | U1 bypass capacitor for IO_VDD (0.1 μ F) |
| D1 | Clamp diode for I/O signals |
| D2 | Clamp diode for I/O signals |
| LED1 | VDD power LED (green) |
| R1 | LED1 current limiting resistor (200 Ω) |
| R2 | Pull-up resistor for SDA (2.1k Ω) |
| R3 | Pull-up resistor for nCS (10k Ω) |
| R4 | Pull-up resistor for SCL (2.1k Ω) |
| R5 | Pull-up resistor for ADDR (10k Ω) |
| R6 | Pull-down resistor for RES (10k Ω) |
| R8 | Bypass for VDD current measurement jumper (J2) |
| R11 | 0 Ω jumper for RES |
| R13 | 0 Ω jumper for IO_VDD |
| U1 | KXTJ3-1057 accelerometer |

Notes

1. The information contained herein is subject to change without notice.
2. Before you use our Products, please contact our sales representative and verify the latest specifications :
3. Although ROHM is continuously working to improve product reliability and quality, semiconductors can break down and malfunction due to various factors. Therefore, in order to prevent personal injury or fire arising from

failure, please take safety

measures such as complying with the derating characteristics, implementing redundant and fire prevention designs, and utilizing backups and fail-safe procedures. ROHM shall have no responsibility for any damages arising out of the use of our Products beyond the rating specified by ROHM.

4. Examples of application circuits, circuit constants and any other information contained herein are provided only to illustrate the standard usage and operations of the Products. The peripheral conditions must be taken into account when designing circuits for mass production.
5. The technical information specified herein is intended only to show the typical functions of and examples of application circuits for the Products. ROHM does not grant you, explicitly or implicitly, any license to use or exercise intellectual property or other rights held by ROHM or any other parties. ROHM shall have no responsibility whatsoever for any dispute arising out of the use of such technical information.
6. The Products specified in this document are not designed to be radiation tolerant.
7. For use of our Products in applications requiring a high degree of reliability (as exemplified below), please contact and consult with a ROHM representative : transportation equipment (i.e. cars, ships, trains), primary communication equipment, traffic lights, fire/crime prevention, safety equipment, medical systems, servers, solar cells, and power transmission systems.
8. Do not use our Products in applications requiring extremely high reliability, such as aerospace equipment, nuclear power control systems, and submarine repeaters.
9. ROHM shall have no responsibility for any damages or injury arising from non-compliance with the recommended usage conditions and specifications contained herein.
10. ROHM has used reasonable care to ensure the accuracy of the information contained in this document. However, ROHM does not warrant that such information is error-free, and ROHM shall have no responsibility for any damages arising from any inaccuracy or misprint of such information.
11. Please use the Products in accordance with any applicable environmental laws and regulations, such as the RoHS Directive. For more details, including RoHS compatibility, please contact a ROHM sales office. ROHM shall have no responsibility for any damages or losses resulting non-compliance with any applicable laws or regulations.
12. When providing our Products and technologies contained in this document to other countries, you must abide by the procedures and provisions stipulated in all applicable export laws and regulations, including without limitation the US Export Administration Regulations and the Foreign Exchange and Foreign Trade Act.
13. This document, in part or in whole, may not be reprinted or reproduced without prior consent of ROHM.

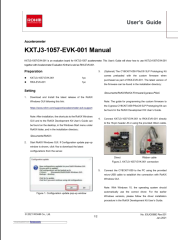
Thank you for your accessing to ROHM product informations.

More detail product informations and catalogs are available, please contact us.

ROHM Customer Support System <http://www.rohm.com/contact/>



Documents / Resources

| | |
|---|--|
|  | ROHM RKX-EVK-001 Accelerometer Evaluation Kit [pdf] User Guide RKX-EVK-001 Accelerometer Evaluation Kit, RKX-EVK-001, Accelerometer Evaluation Kit, Evaluation Kit, Kit |
|---|--|

References

- [User Manual](#)

Manuals+, Privacy Policy

This website is an independent publication and is neither affiliated with nor endorsed by any of the trademark owners. The "Bluetooth®" word mark and logos are registered trademarks owned by Bluetooth SIG, Inc. The "Wi-Fi®" word mark and logos are registered trademarks owned by the Wi-Fi Alliance. Any use of these marks on this website does not imply any affiliation with or endorsement.