



rocketfish RF-NSJCCS Joy-Con Charge Station for Nintendo Switch User Guide

[Home](#) » [RocketFish](#) » rocketfish RF-NSJCCS Joy-Con Charge Station for Nintendo Switch User Guide 

rocketfish RF-NSJCCS Joy-Con Charge Station for Nintendo
Switch User Guide



QUICK SETUP GUIDE

Joy-Con Charge Station for Nintendo Switch

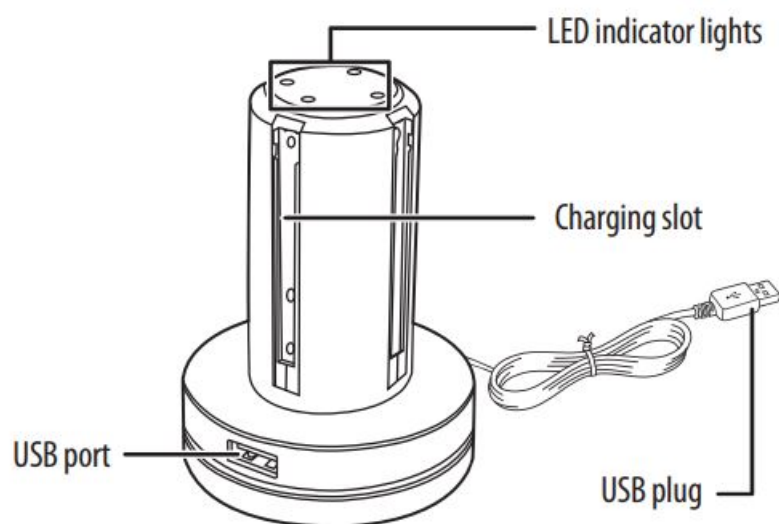
RF-NSJCCS

Contents

- 1 PACKAGE CONTENTS
- 2 FEATURES
- 3 SETTING UP THE CHARGING STATION
- 4 USING THE EXTERNAL USB CHARGING PORT
- 5 SPECIFICATIONS
- 6 TROUBLESHOOTING
- 7 LEGAL NOTICES
- 8 ONE-YEAR LIMITED WARRANTY
- 9 CONTACT ROCKETFISH:
- 10 Documents / Resources
 - 10.1 References
- 11 Related Posts

PACKAGE CONTENTS

- Charging Station
- Quick Setup Guide



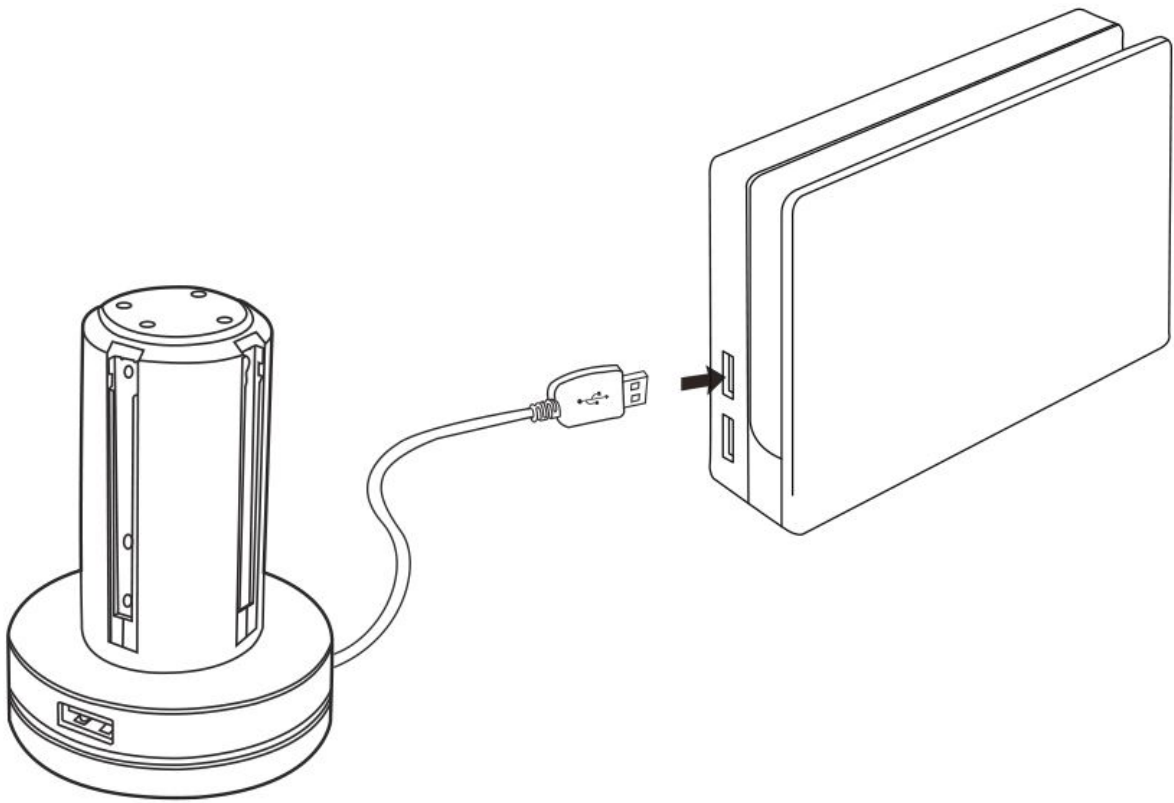
Before using your new product, please read these instructions to prevent any damage.

FEATURES

- Charges up to four Joy-Cons simultaneously
- Easy slide-in design connects each controller to the charger
- Individual LEDs indicate the charge level for each controller
- Weighted base for stability
- External USB charging port for charging an additional device

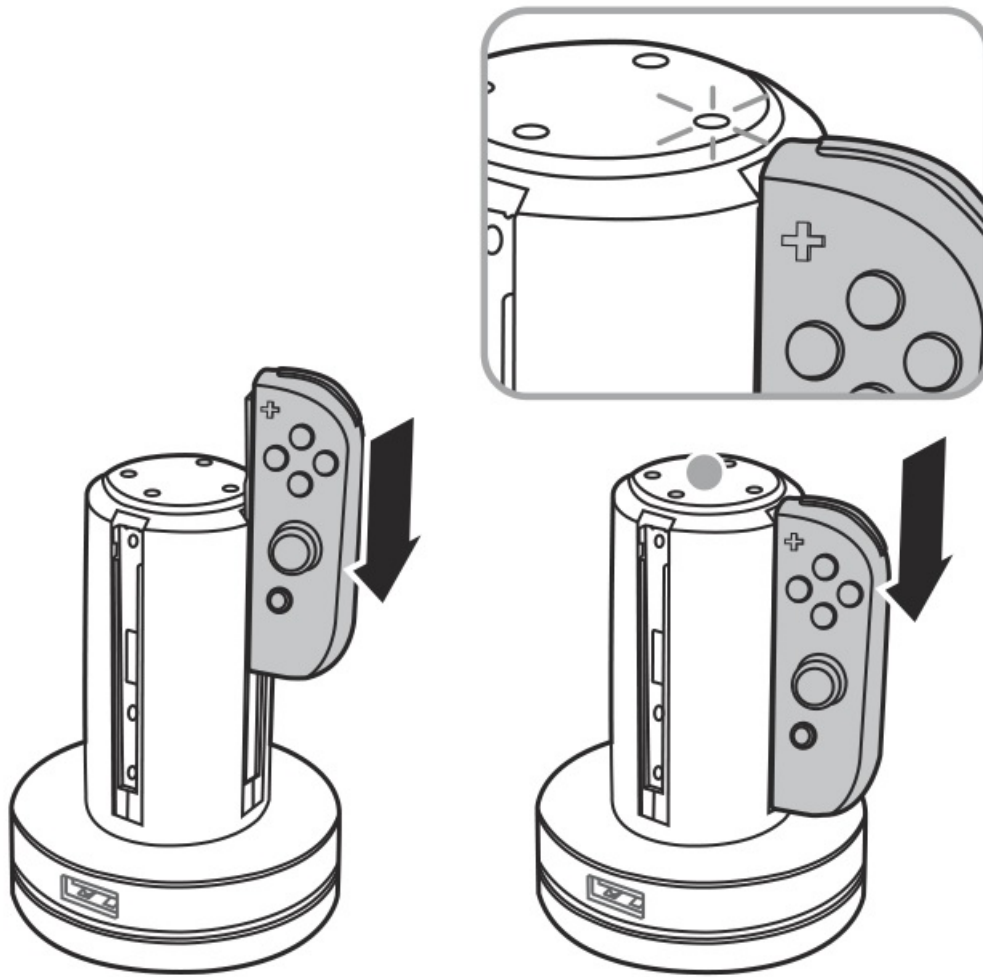
SETTING UP THE CHARGING STATION

1. Plug the charge station cable into the USB port of the Switch Dock or any compatible USB device.



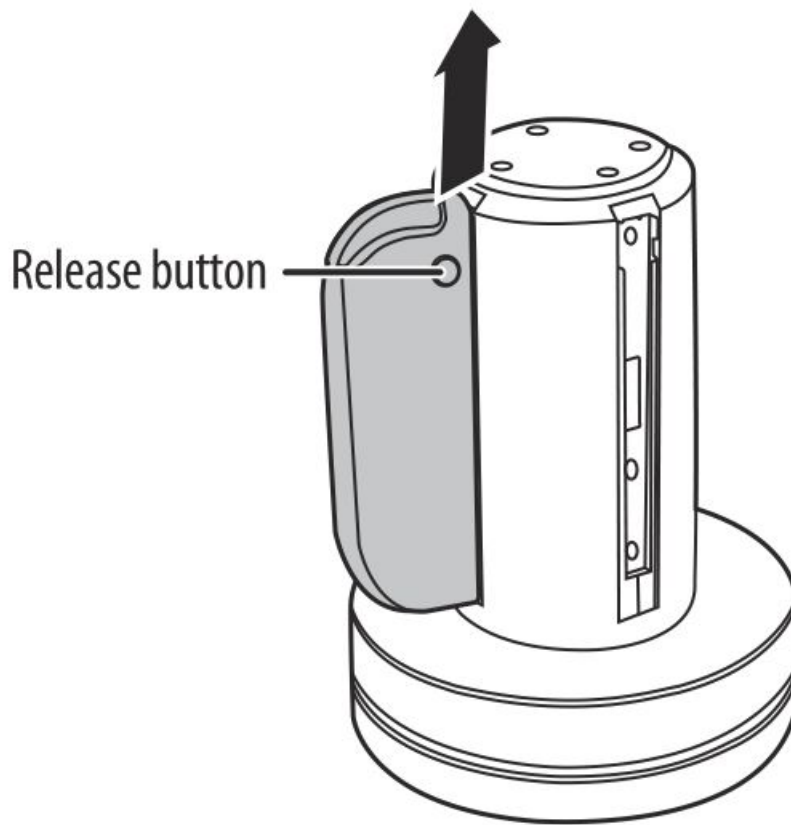
2 Slide the controller down into a charging slot to charge. The LED indicator lights red when the controller is properly seated.

Note: Make sure that the controller slides into the charging station in an upright position.



STATUS LED	DESCRIPTION
Red	Charging in process
Green	Charging complete

3 When the LED indicator turns green, hold the release button on the back of the controller and slide it up to remove it from the charging station.

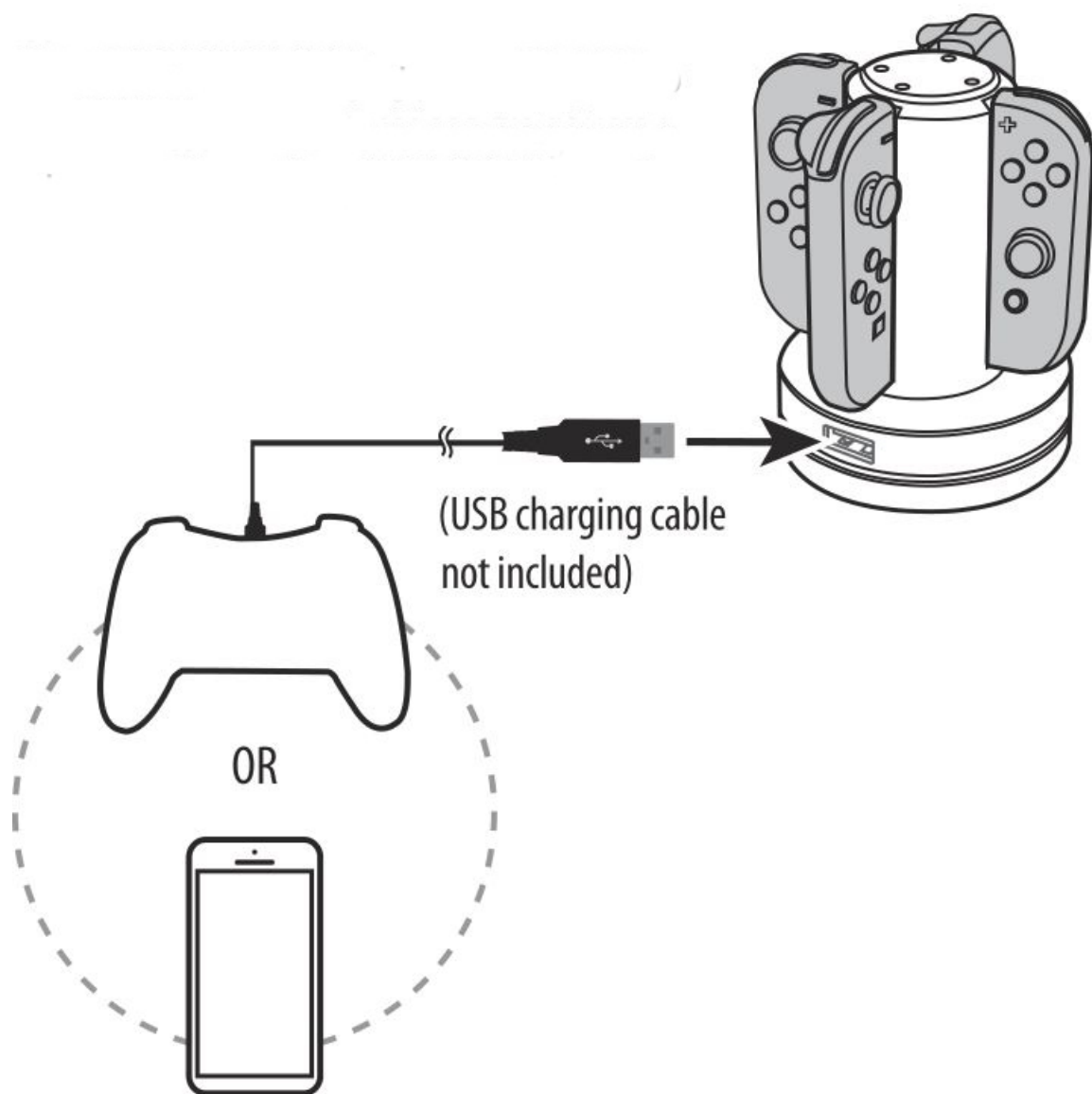


USING THE EXTERNAL USB CHARGING PORT

To recharge your Switch Pro controller or other USB device, use the external USB charging port.

Notes:

- Charging time for a controller or phone may vary based on the number of controllers charging at that time.
- The external USB charging port is designed to charge most USB 2.0 devices and might not charge newer devices.



SPECIFICATIONS

Dimensions (W×H×D)	3.9 x 5.2 x 3.9 in. (9.9 x 13.2 x 9.9 cm)
Cable length	3.9ft (120 cm)
Input	USB 5V
Output - Charging station: External USB charging port:	5V 200mA X4 5V 500mA
Operating temperature	32°F~104°F (0°C~40°C)

SAFETY INFORMATION

- Do not disassemble any of the components. Refer all services to qualified personnel only.
- Do not place or store the product in a humid area and do not exposit to water or rain.
- Use the product only as instructed. Read all instructions before operating the product.
- Failure to follow these directions may void the warranty.

TROUBLESHOOTING

The charging station doesn't charge?

- Align the bottom of the Joy-Con controller rail with the channel on the side of the charging station.
- Verify that the charge station is plugged into a powered USB port.
- Unplug the charging station's USB power cable and plug it back in.

LEGAL NOTICES

FCC Information

This device complies with part 15 of the FCC Rules. Operation is subject to the following two conditions: (1) This device may not cause harmful interference, and (2) this device must accept any interference received, including interference that may cause undesired operation.

Warning: Changes or modifications to this unit not expressly approved by the party responsible for compliance could void the user's authority to operate the equipment.

Note: This equipment has been tested and found to comply with the limits for a Class B digital device, pursuant to Part 15 of the FCC Rules. These limits are designed to provide reasonable protection against harmful interference in a residential installation. This equipment generates, uses and can radiate radio frequency energy and, if not installed and used in accordance with the instructions, may cause harmful interference to radio communications. However, there is no guarantee that interference will not occur in a particular installation. If this equipment does cause harmful interference to radio or television reception, which can be determined by turning the equipment off and on, the user is encouraged to try to correct the interference by one or more of the following measures:

- Reorient or relocate the receiving antenna.
- Increase the separation between the equipment and receiver.
- Consult the dealer or an experienced radio/TV technician for help.
- Connect the equipment into an outlet on a circuit different from that to which the receiver is connected.

ICES-003 Statement

This Class B digital apparatus complies with Canadian ICES-3(B) / NMB-3(B) standard.

ONE-YEAR LIMITED WARRANTY

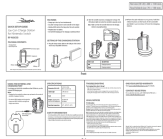
Visit www.rocketfishproducts.com for details.

CONTACT ROCKETFISH:

For customerservice, call 1-800-620-2790 (U.S.) www.rocketfishproducts.com

Nintendo Switch is a registered trademark of Nintendo Inc. This product is not sponsored or approved by Nintendo. Other parties' marks are the property of their respective owners. ROCKETFISH is a trademark of Best Buy and its affiliated companies. Registered in some countries Distributed by Best Buy Purchasing, LLC, 7601 Penn Ave South, Richfield, MN 55423 U.S.A.,
©2020 Best Buy. All rights reserved.
Made in China

Documents / Resources

	rocketfish RF-NSJCCS Joy-Con Charge Station for Nintendo Switch [pdf] User Guide RF-NSJCCS, Joy-Con Charge Station for Nintendo Switch
---	---

References

-  [Rocketfish Universal Products for Consumer Electronics](#)