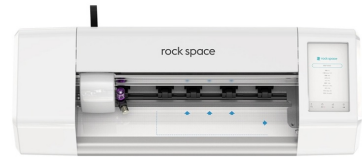




**ZC1-A Smart
Protective Film
Plotter Max**



rock space ZC1-A Smart Protective Film Plotter Max Instruction Manual

[Home](#) » [rock space](#) » rock space ZC1-A Smart Protective Film Plotter Max Instruction Manual 

Contents

- [1 rock space ZC1-A Smart Protective Film Plotter Max](#)
- [2 Product Information](#)
- [3 Product Usage Instructions](#)
- [4 Product List](#)
- [5 Appearance And Function](#)
- [6 Using Instructions](#)
- [7 Product Specification](#)
- [8 How to Install the Film](#)
- [9 Precautions](#)
- [10 FCC Statement](#)
- [11 Documents / Resources](#)
 - [11.1 References](#)
- [12 Related Posts](#)



rock space ZC1-A Smart Protective Film Plotter Max



Specifications:

- **Model:** ZC1-A(V1.0)
- **Manufacturer:** Shenzhen Renqing Excellent Technology Co., Ltd.
- **Product Name:** Smart Protective Film Plotter ZC1 Max (V1.0)

Product Information

The Smart Protective Film Plotter ZC1 Max (V1.0) is a film-cutting machine designed to accurately cut protective films for various devices. It comes with a host unit, blade kit, power cord, and film installation accessories for precise cutting and application of protective films. The device features various components like the platen roller, lateral panel, driver, operation display, power interface, pressing bar, and blade kit clamp to ensure efficient and precise cutting operations.

Product Usage Instructions

Setting Up the Device:

1. Place the Smart Plotter ZC1 Max Host on a stable surface.
2. Connect the power cord to the power interface of the device.
3. Ensure all components like the blade kit, platen roller, and lateral panel are properly assembled.

Cutting Protective Film:

1. Load the protective film onto the device and secure it using the platen roller.
2. Use the driver to control the lateral movement of the Blade Kit for precise cutting.
3. Press the pressing bar to lift or lower the platen roller as needed during cutting.
4. Replace the blade when necessary for optimal cutting performance.

FAQ:

Q: How do I replace the blade on the Smart Protective Film Plotter ZC1 Max?

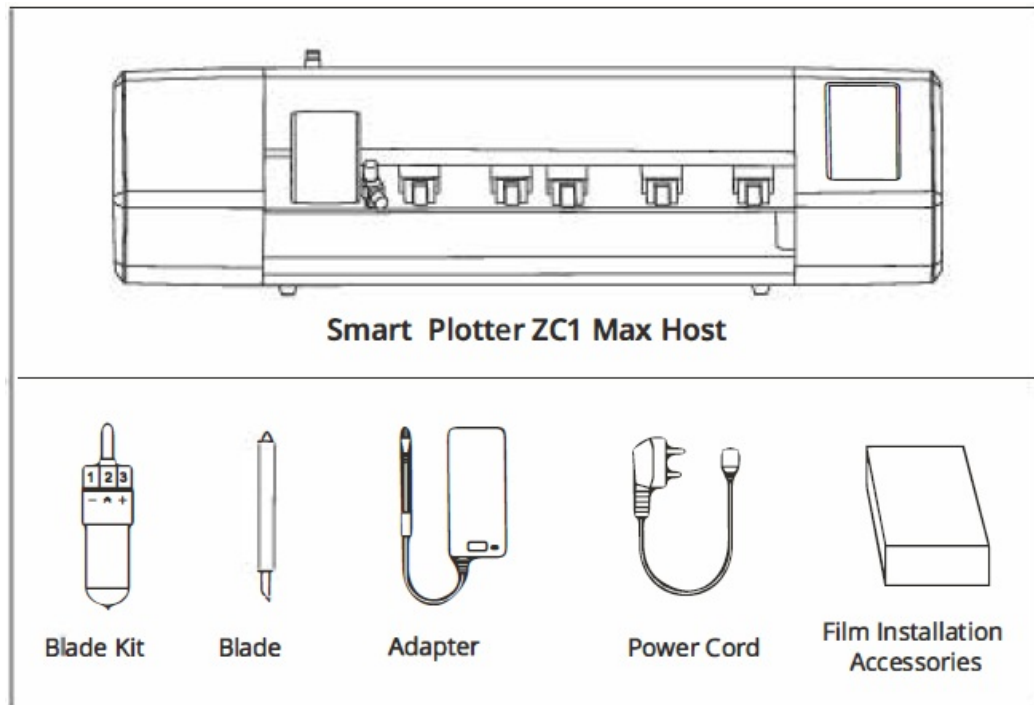
A: To replace the blade, follow these steps:

1. Unlock the blade kit clamp to release the current blade.

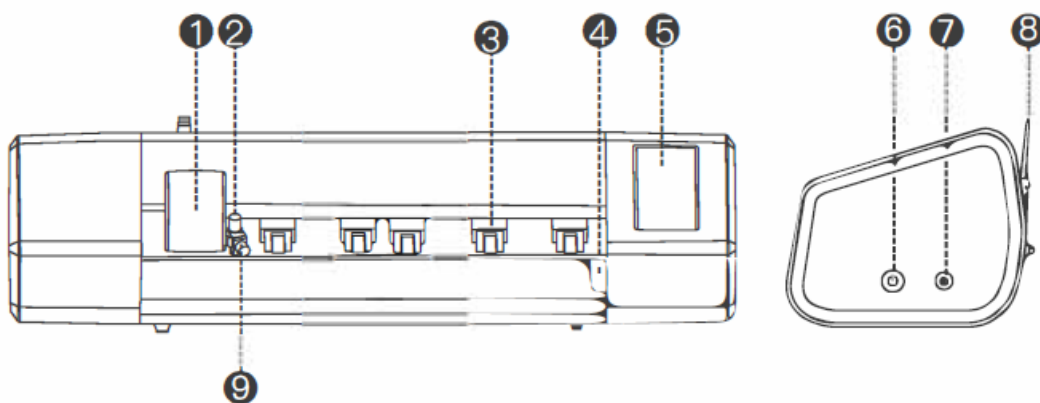
2. Carefully remove the old blade and dispose of it properly.
3. Insert a new blade into the blade kit and secure it by locking the blade kit clamp.

This equipment is also called a film cutting machine, a protective film-cutting machine.

Product List



Appearance And Function



1. **Driver**
Control the lateral movement of the Blade Kit
2. **Blade Kit**
Cutting protective film See details 10, 11, 12, 13
3. **Platen Roller**
Fixes protective film
4. **Lateral Panel**
Set limit of position and movement for protective film
5. **Operation Display**

Touch to control device operation

6. **Power Switch**

Starting device

7. **Power Interface**

Link power

8. **Pressing Bar**

Press to control the platen roller to lift or fall

9. **Blade Kit Clamp**

Lock the knife handle to secure the blade kit

10. **Button**

Press to replace the blade

11. **Press to replace blade**

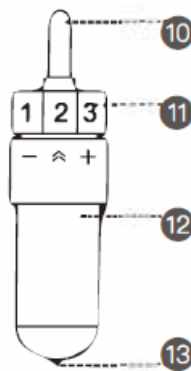
Rotate She king Ko control the length of blade

12. **Holder**

Fixed with the blade kit clamp

13. **Blade**

Cut protective film



Notice:

• **Adjust blade:**

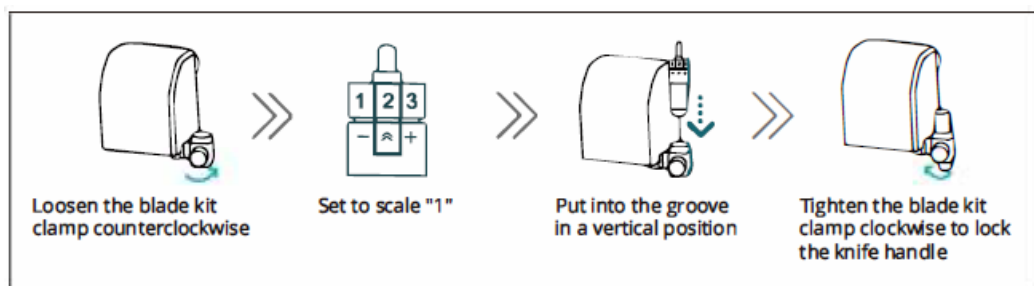
Rotate the knob 11 to control the length of the blade. Lengthen the blade in the direction of the symbol “+” and shorten the blade in the direction of the symbol “-”.

• **Replace blade:**

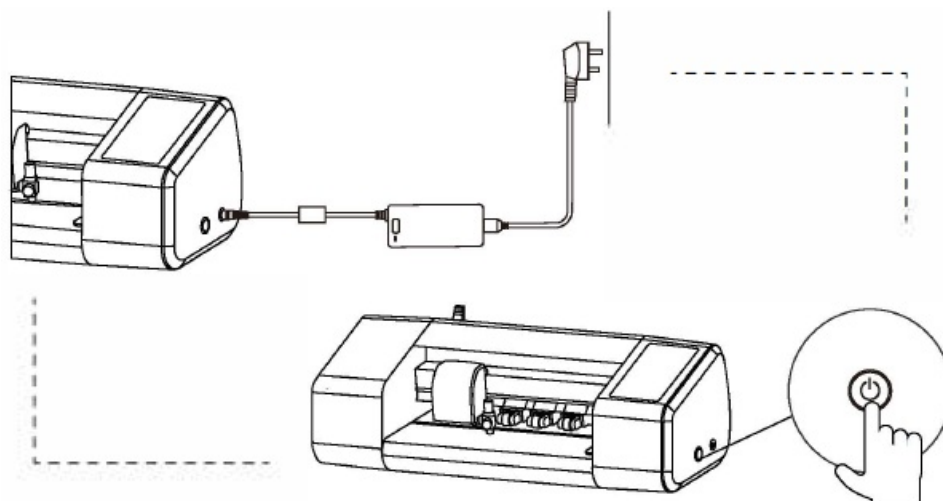
Press the button 10 to remove the old blade and then put in the new blade 13. The built-in magnet can absorb the blade)

Using Instructions

Install Blade Kit



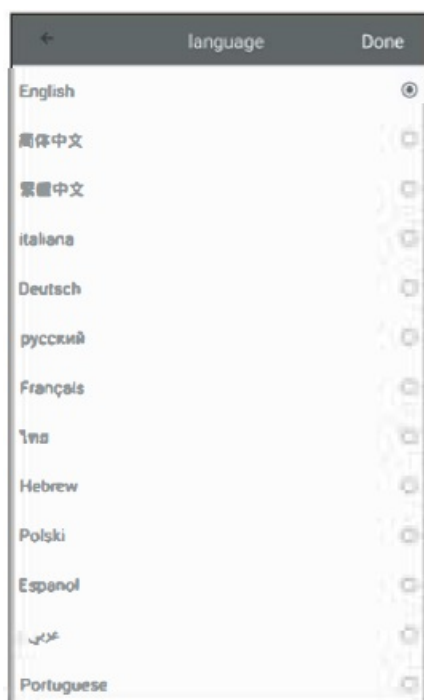
Power On



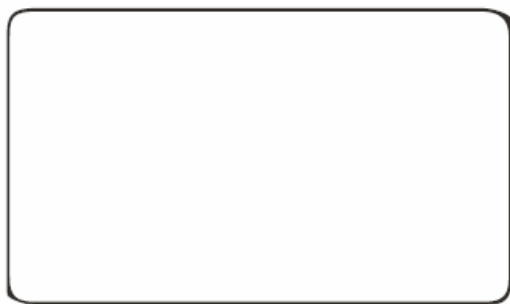
Connect the power cord to the adapter and then connect the power cord to the power socket. To ensure the normal operation of the device, please use 100-240 volts of AC power; Connect the adapter to the power interface of the device; Install the blade kit on the knife holder to ensure it is fixed correctly. After connecting, press [Power Switch] to start the device.

Cut Film

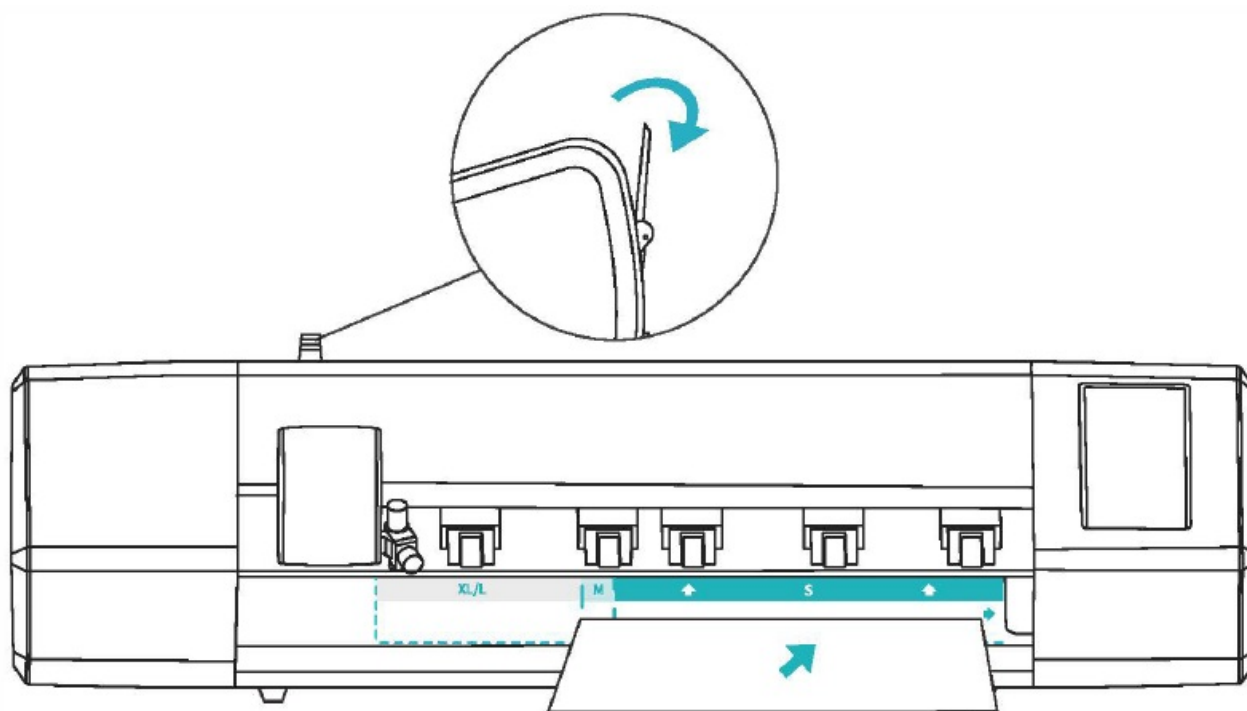
When using it for the first time, you need to click [select language] to complete the language setting, then you need to click [set WIFI] to complete the WIFI connection.



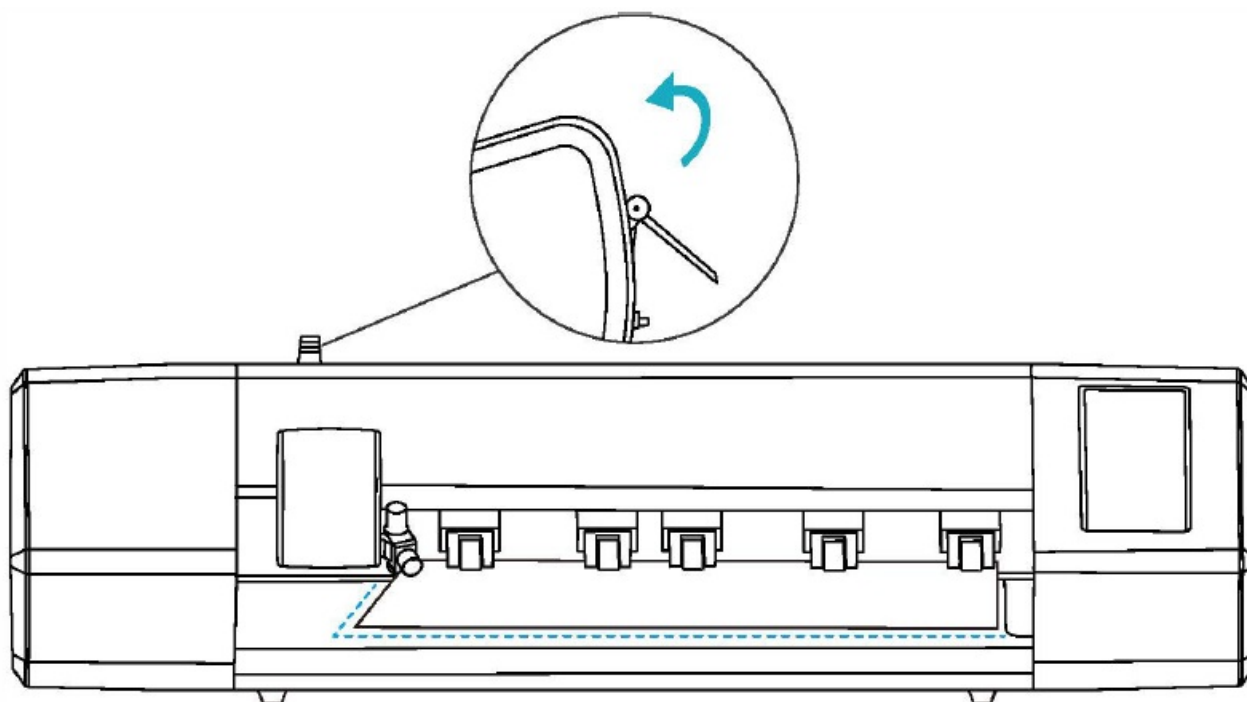
1. Please prepare a protective film to be cut as shown in the figure. Confirm that the protective film is flat and complete, without bending, folding, or missing layers.



2. Press down the pressing bar to lift the platen roller, and place the protective film in the dotted area as shown.



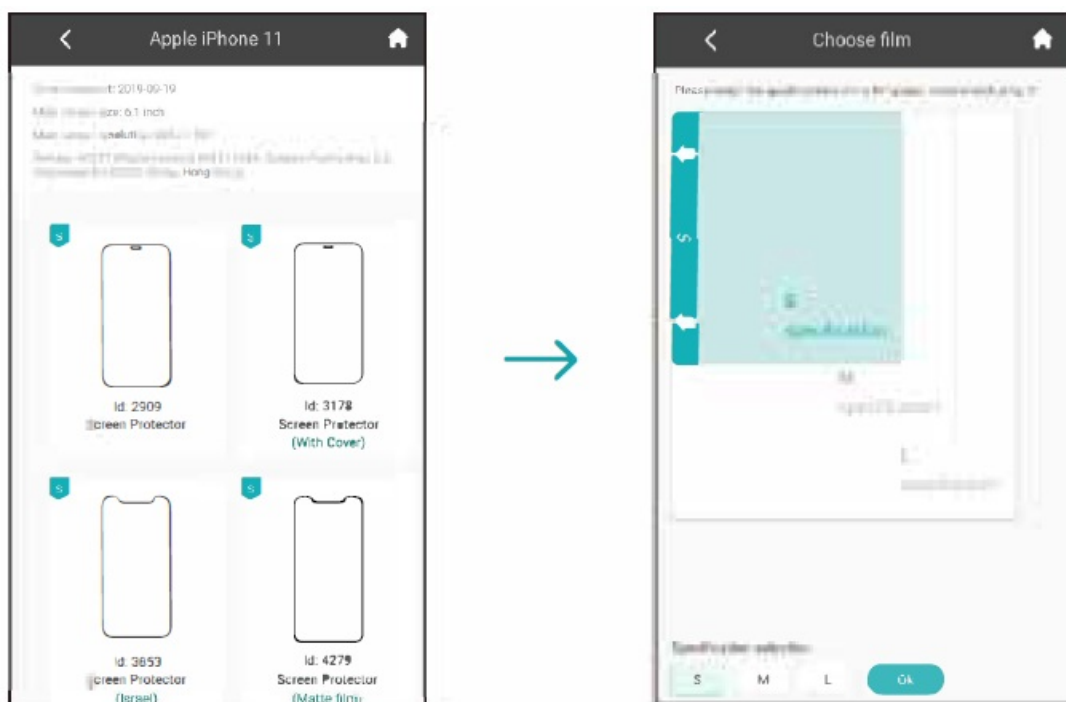
3. Slowly lift the pressing bar so that the platen roller presses the protective film.



4. After the system starts normally, enter the home page.



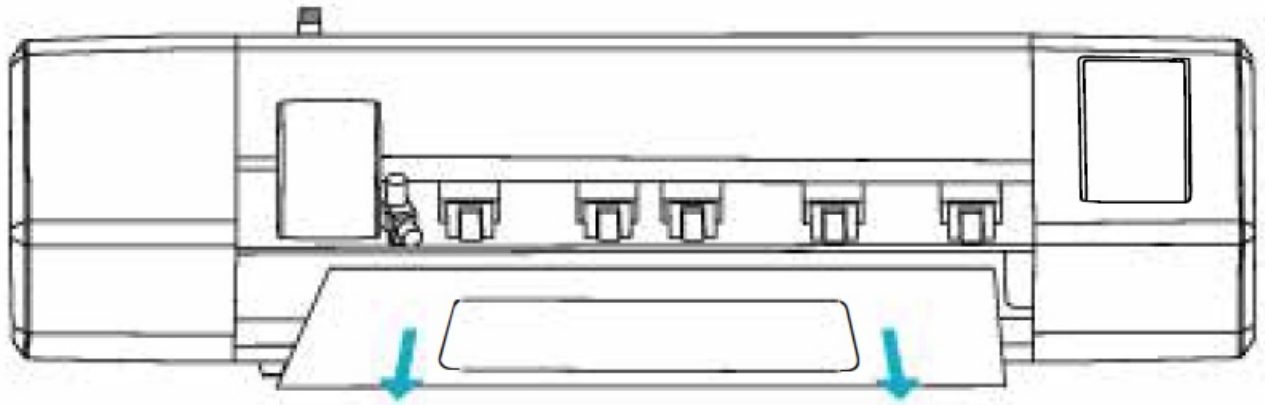
5. Enter keywords in the search box, search for the product model you need to cut, and select the film code of the corresponding specification according to the recommended guidelines on the screen.



6. After confirming the relevant information, click [OK] to start cutting the film.



7. After cutting, the protective film will be pushed out automatically. Take out the protective film and finish cutting.



Activate Film Code


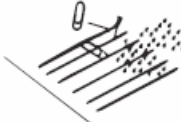





Enter [Consumable identification code] found on the protective film package box, and then click [ADD].



Product Specification

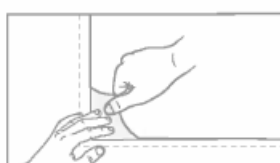
Product Specification	
Control Panel	5.5-inch color LCD capacitive screen
Network Interface	2.4G/5G Wireless LAN
Input	100-240V 1.5A 50-60Hz
Output	24V 2.7A
Power	64.8w
Size	613*220*174mm
Net Weight	7.1kg

Cautions

	Don't touch the tip of the blade with your finger. It may hurt your finger.
	Liquid or metal objects are not allowed to enter into the machine. These objects may cause fires.
	Do not destroy or arbitrarily replace the original power cord. Do not bend, pull or bind the power cord excessively or place the power cord under heavy object. This may cause damage to the power supply, resulting in an electric shock or fire.
	If you do not use the device for a long time, remove the power cord from the socket. Otherwise, it may cause a fire.
	The device should be placed on a firm surface. Otherwise, the device may fall down and get damaged.
	When the power cord is unplugged from the socket, the plug should be unplugged instead of the cable. Pulling a cable strongly may cause an electric shock or fire.
	It is forbidden to use in thunderstorm and lightning weather. Lest the machine be damaged by electric shocks.

How to Install the Film

1. Wipe the screen with the cleaning kit;
2. Tear off the outer frame of the film from the tearing position at the upper right corner of the front of the film;
3. Place the film flatly and remove the white release film;



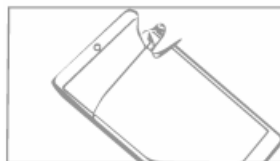
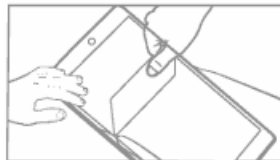
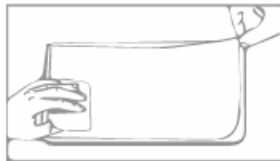
4. Remove the hole film and tear off the middle auxiliary strip; (Please fix the film with your index and middle

fingers);





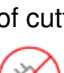
5. Place the film flatly on the screen and hole of the phone precisely and press the auxiliary strip (Be careful not to touch either end of the auxiliary strip);
6. Lift the upper part of the film and pull back 2cm, then push forward slowly with a scratch card from the middle of the auxiliary strip;



7. Then lift the lower part of the film and pull back 2cm, then push forward forcefully with a scratch card;
8. Use a cleaning cloth to smooth the curved surface if necessary;
9. Finally, uncover the surface PET film and finish installing the film.



Precautions

-  Press the power button to stop urgently during cutting.
-  Please don't move the driver manually when powered on to avoid damage to the machine.
-  Please don't touch or bump the blade against anything hard for it is sharp and fragile.
-  To ensure perfect cutting effect, it is suggested to replace the blade and the rubber strip every 500 times of cutting or 3 months of use.
-  Please shut down the machine normally through the App, and please don't unplug the power cable

directly, for it may cause irreversible damage to the machine.

If you are a user beyond China, please scan the QR code to follow us on Facebook for more information.



FCC Statement

Changes or modifications not expressly approved by the party responsible for compliance could void the user's authority to operate the equipment. This equipment has been tested and found to comply with the limits for a Class B digital device, under Part 15 of the FCC Rules. These limits are designed to provide reasonable protection against harmful interference in a residential installation. This equipment generates uses and can radiate radio frequency energy and, if not installed and used under the instructions, may cause harmful interference to radio communications. However, there is no guarantee that interference will not occur in a particular installation. If this equipment does cause harmful interference to radio or television reception, which can be determined by turning the equipment off and on, the user is encouraged to try to correct the interference by one or more of the following measures:

- Reorient or relocate the receiving antenna.
- Increase the separation between the equipment and the receiver.
- Connect the equipment to an outlet on a circuit different from that to which the receiver is connected.
- Consult the dealer or an experienced radio/TV technician for help.

FCC Radiation Exposure Statement


The antennas used for this transmitter must be installed to provide a separation distance of at least 20 cm from all persons and must not be co-located for operating in conjunction with any other antenna or transmitter.

This device complies with Part 15 of the FCC Rules. Operation is subject to the following two conditions:

1. This device may not cause harmful interference, and
2. This device must accept any interference received, including interference that may cause undesired operation.

Shenzhen Renqing Excellent Technology Co., Ltd.

Documents / Resources

 Smart Protective Film Plotter ZC1 Max (V1.0) Model: ZC1-A(V1.0) Product Manual <small>(This equipment is called film cutting machine, protective film, cutting machine)</small> <small>Shenzhen Renqing Excellent Technology Co., Ltd.</small>	rock space ZC1-A Smart Protective Film Plotter Max [pdf] Instruction Manual ZC1-A, ZC1-A Smart Protective Film Plotter Max, Smart Protective Film Plotter Max, Protective Film Plotter Max, Film Plotter Max, Plotter Max, Max
--	--

References

- [User Manual](#)

[Manuals+](#), [Privacy Policy](#)

This website is an independent publication and is neither affiliated with nor endorsed by any of the trademark owners. The "Bluetooth®" word mark and logos are registered trademarks owned by Bluetooth SIG, Inc. The "Wi-Fi®" word mark and logos are registered trademarks owned by the Wi-Fi Alliance. Any use of these marks on this website does not imply any affiliation with or endorsement.