



## rock space SOP1 Smart Operation Panel User Manual

[Home](#) » [rock space](#) » rock space SOP1 Smart Operation Panel User Manual 



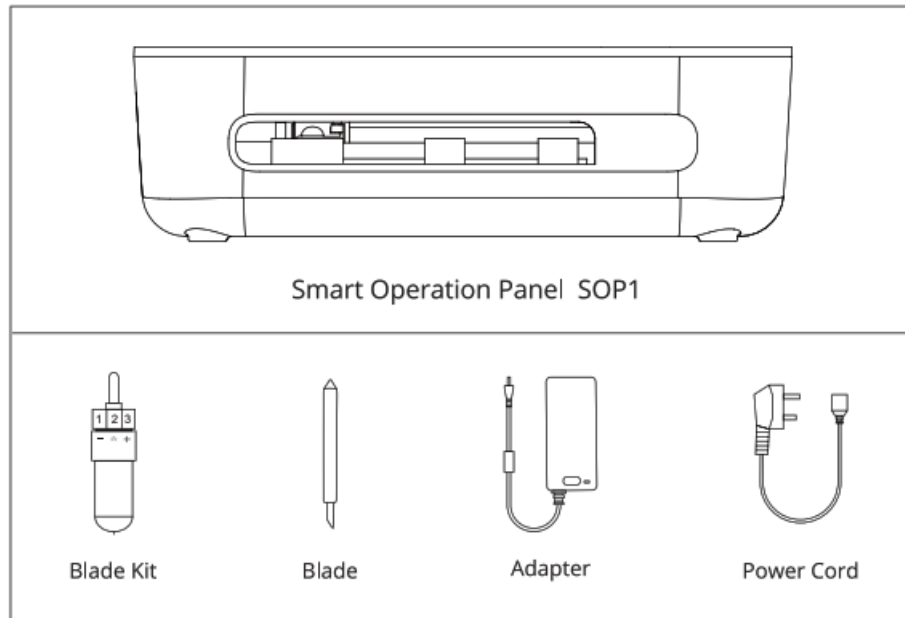
Smart Operation Panel SOP1  
Product Manual

Shenzhen Rengqing Excellent Technology Co., Ltd.

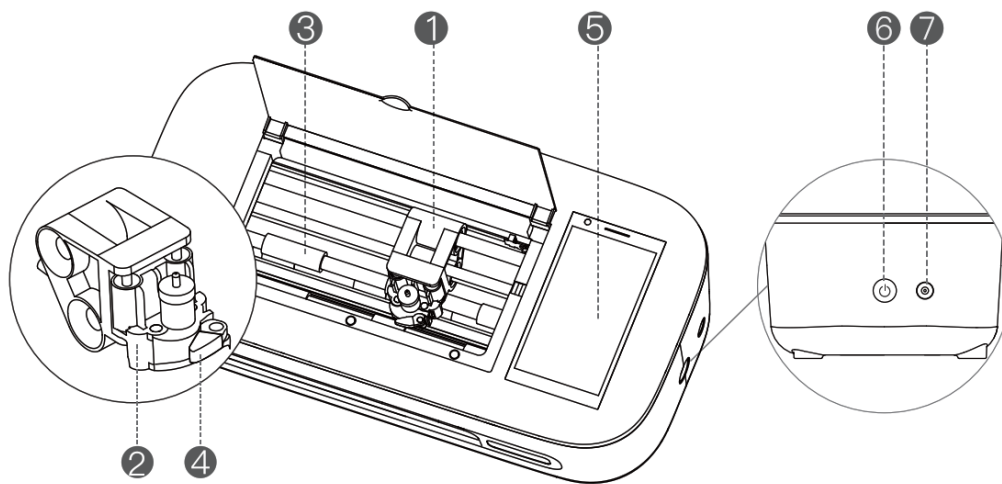
### Contents

- [1 Product List Appearance And Function](#)
- [2 Instructions](#)
- [3 Uninstall/Install Smart Operation Panel](#)
- [4 How To Install The Film](#)
- [5 Documents / Resources](#)
- [6 Related Posts](#)

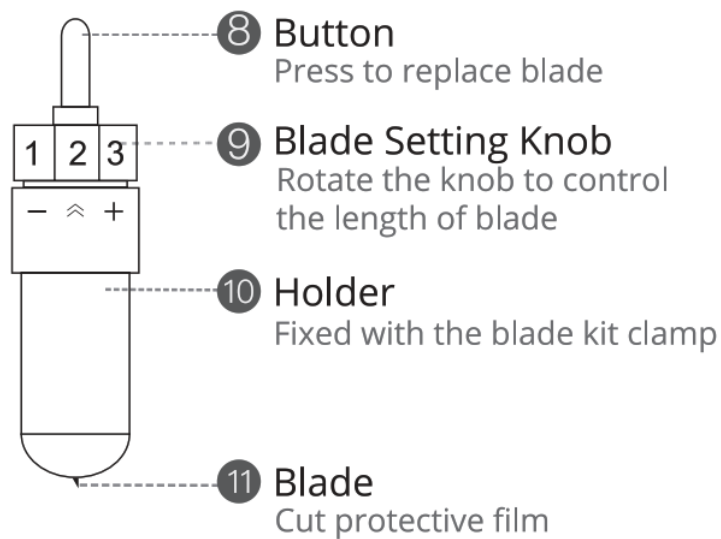
## Product List



## Appearance And Function



1. Driver  
Control the lateral movement of the blade kit
2. Blade Kit  
Cut protective film. See details 8, 9, 10, 11
3. Platen Roller  
Fix protective film
4. Blade Kit Clamp Lock the knife handle to secure the blade kit
5. Smart Operation Panel Touch to control device operation
6. Power Switch Start device
7. Power Interface  
Connect to power



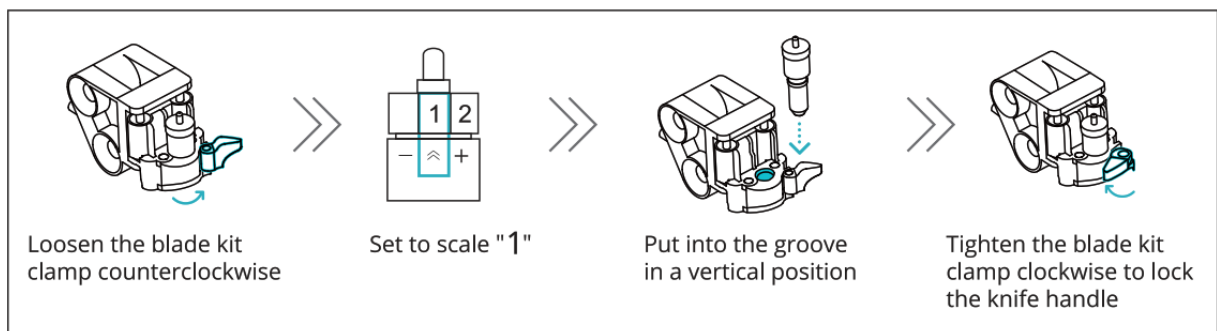
#### Notice:

**Adjust blade:** Rotate the knob 9 to control the length of the blade. Lengthen the blade in the direction of the symbol “+” and shorten the blade in the direction of the symbol “-”.

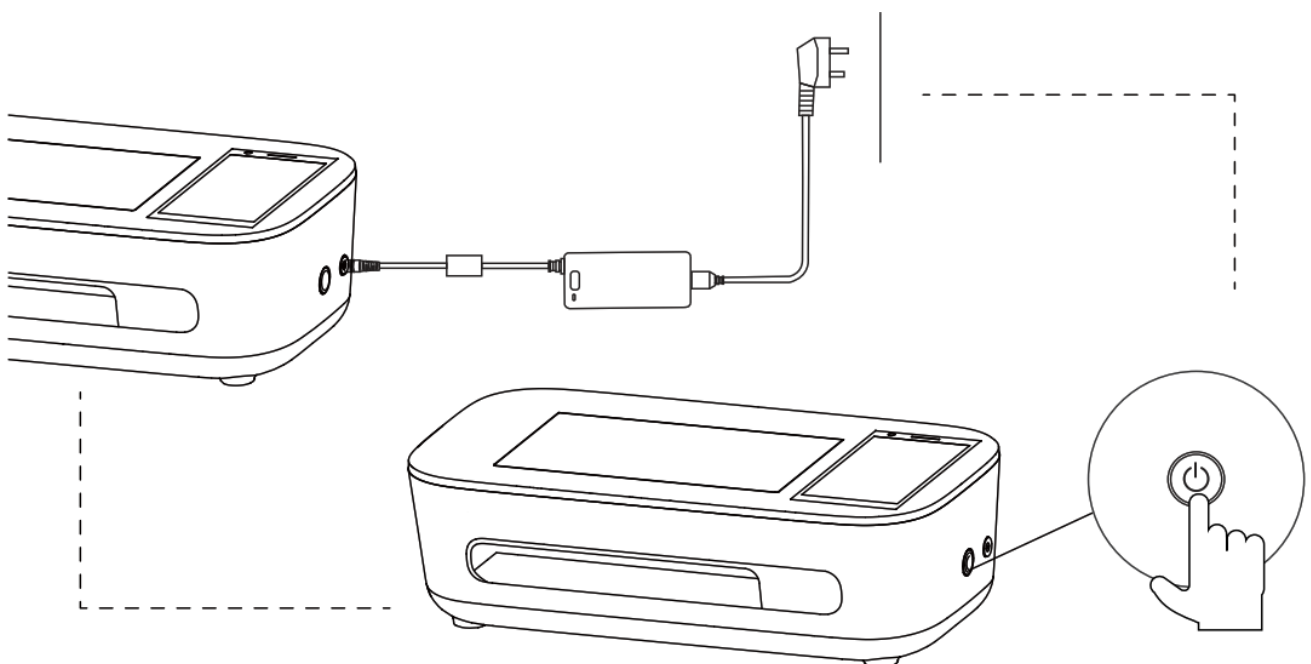
**Replace blade:** Press button 8 to remove the old blade and then put in the new blade 11. (The built-in magnet can absorb the blade)

## Instructions

### 1. Install Blade Kit



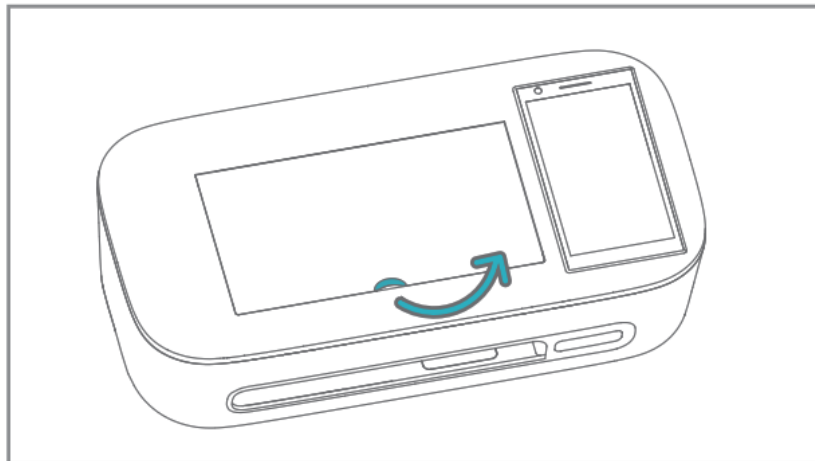
### 2. Power On



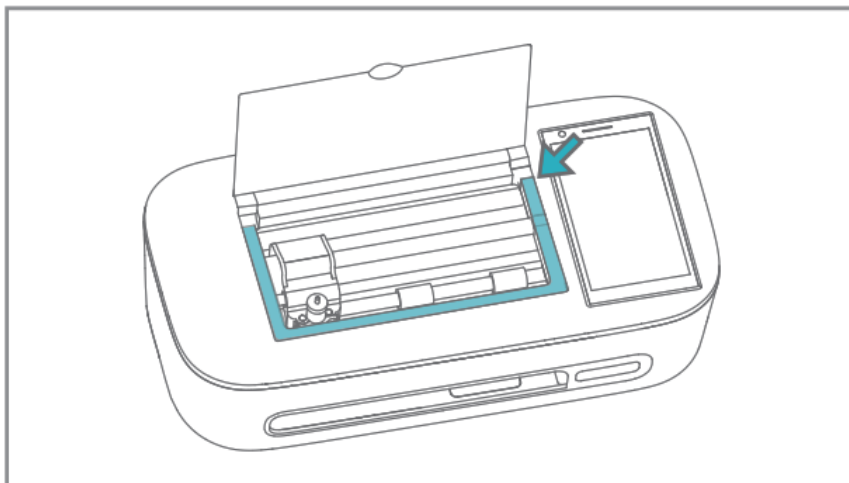
Connect the power cord to the adapter and socket. To ensure the normal operation of the device, please use 100-

240volts AC power. Connect the adapter to the power interface of the device; Install the blade kit on the clamp to ensure it is fixed correctly. After connecting, press [PowerSwitch]to start the device.

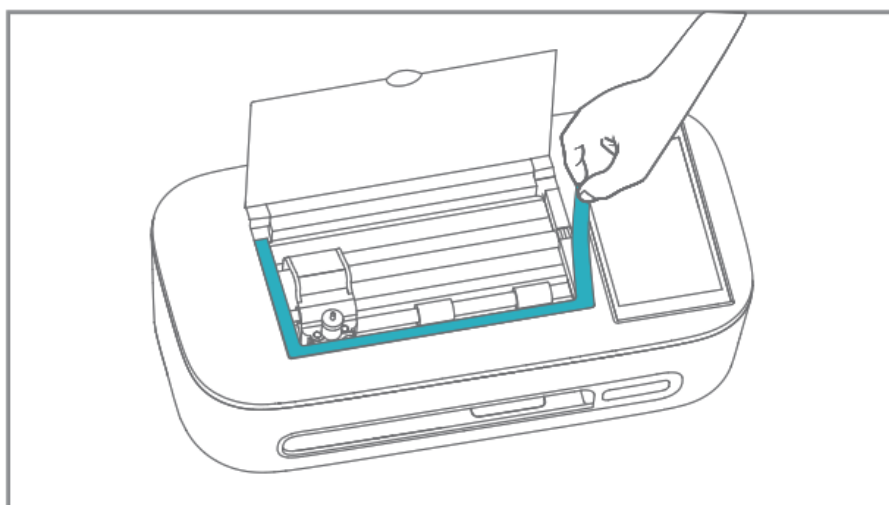
### Uninstall/Install Smart Operation Panel



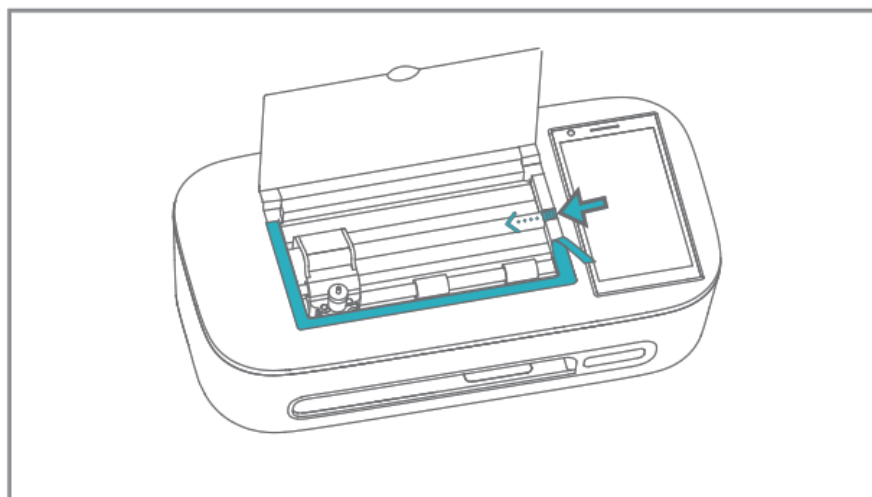
1. Uninstall: Pull up the flip cover according to the position shown in the figure;



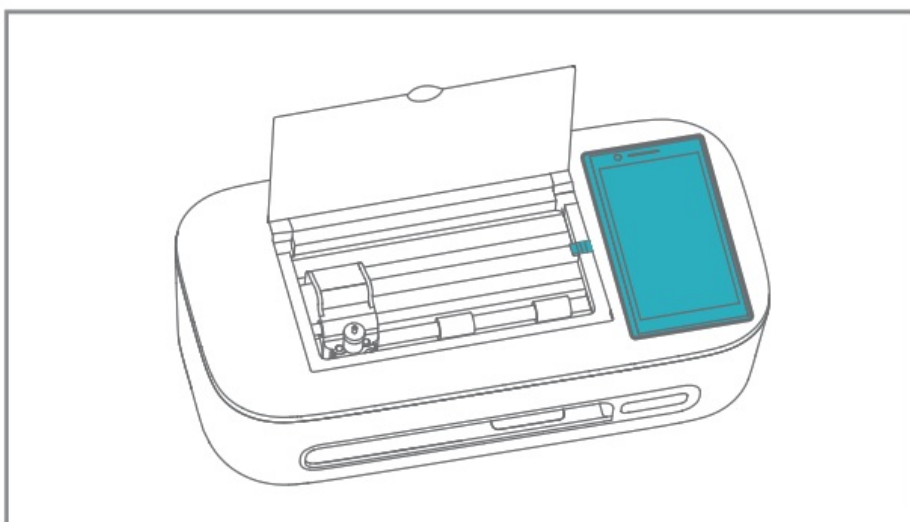
2. There is a white sticker at the position indicated by the arrow on the right;



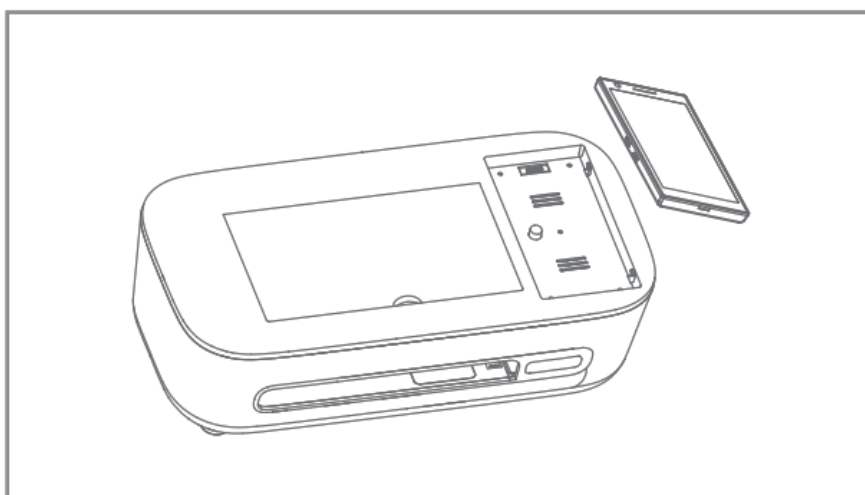
3. Tear off the white sticker, and there is a button below the sticker;



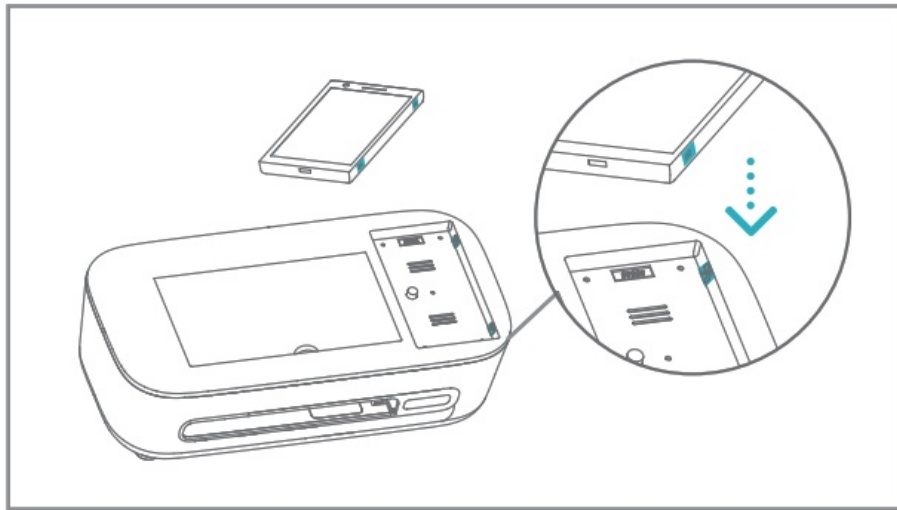
4. Pull the button from right to left as shown;



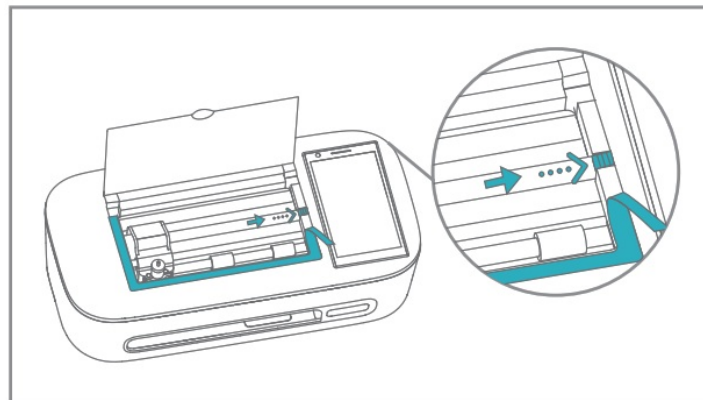
5. After the button is pulled out, the smart operation panel on the right will pop up;



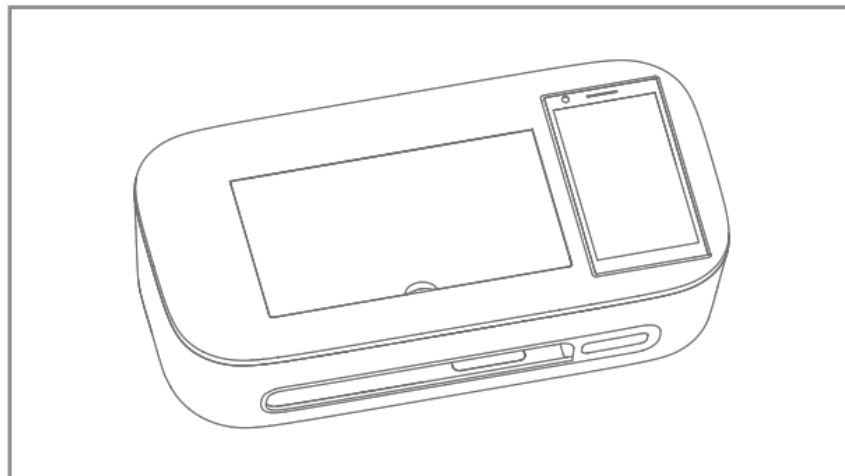
6. Just remove the smart operation panel.



7. Install: Align the smart operation panel with the right interface firstly;
8. After putting in the smart operation panel; push the button inwards to lock it and put the sticker back;



9. After installation is complete, just close the flip cover.



#### 4, Cut Film

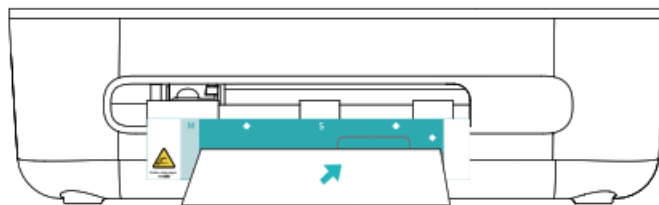
When using it for the first time, you need to click [select language] to complete the language setting, then you need to click [set WIFI] to complete WIFI connection.



1. Please prepare a protective film to be cut as shown in the figure. Confirm that the protective film is flat and complete, without bending, folding or missing layer.



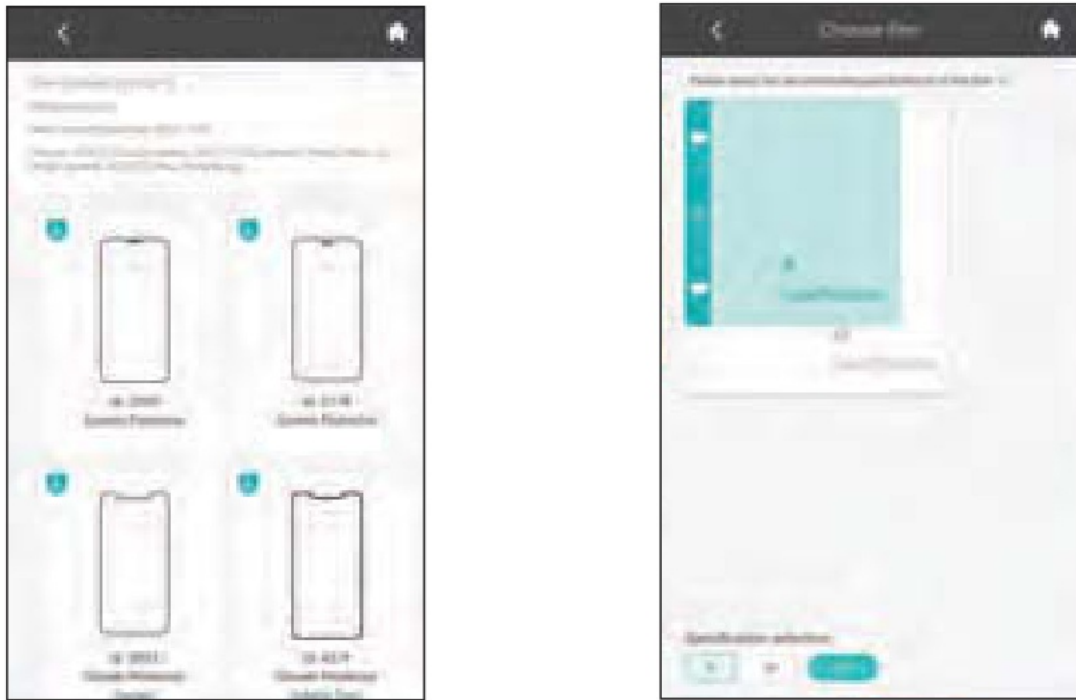
2. Feed the front end of film to the bottom of platen roller and align the right side of film with the guideline. Please don't place the film into the white area. Hold the film gently for 3 seconds until it enters automatically.



3. After the system starts normally, it enters the home page.



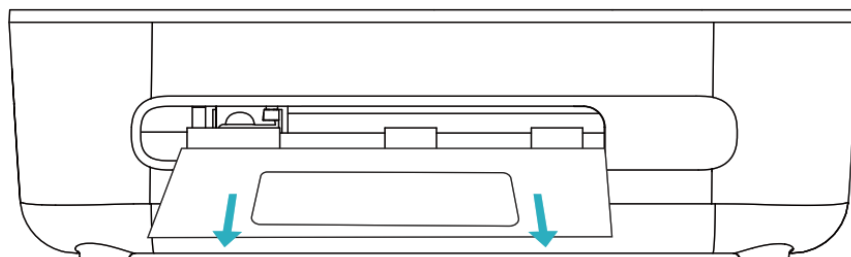
4. Input keywords of the product model you need to cut into the searching box. Select the right template according to the instructions.



5. After the relevant information is correct, click [DONE] to start cutting the film.

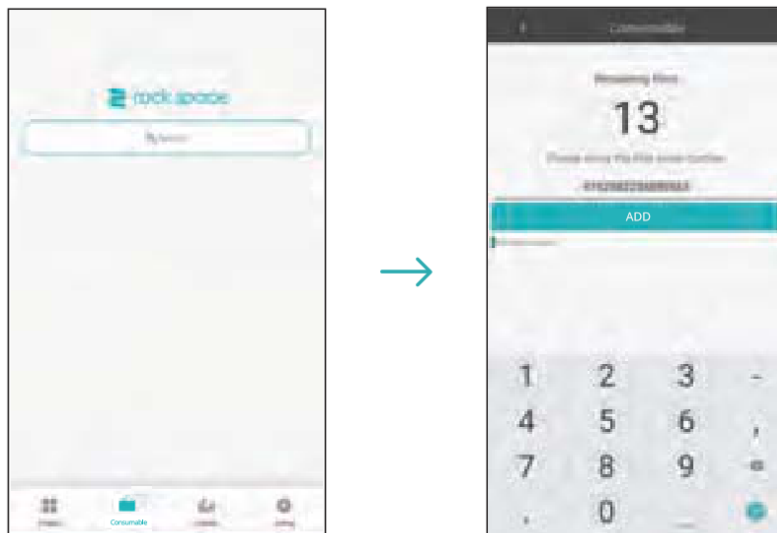


6. After cutting, the protective film will be pushed out automatically. Take out the protective film and finish cutting.










## 5. Activate Film Code

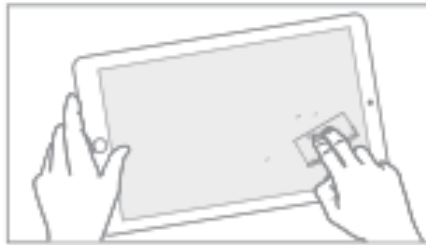
Click [Consumables] and enter the [consumables identification code] on the protective film packaging box. And then click [ADD] .



## Cautions

	Do not touch the tip of the blade with your finger. It will hurt your finger.
	Liquid or metal objects are not allowed to enter into the machine. These objects can cause a fire.
	Do not destroy or arbitrarily replace the original power cord. Do not bend, pull or bind the power cord excessively or place the power cord under heavy object. This may cause damage to the power supply, resulting in an electric shock or fire.
	If you do not use the device for a long time, remove the power cord from the socket. Otherwise, it may cause a fire.
	The device should be placed on a firm surface. Otherwise, the device may fall down and get damaged.
	When the power cord is unplugged from the socket, the plug should be unplugged instead of the cable. Pulling a cable strongly may cause an electric shock or fire.
	It is forbidden to use in thunderstorms and lightning weather. Lest the machine be damaged by electric shocks.

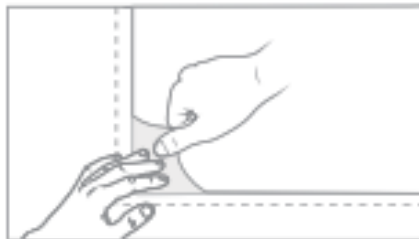
## How To Install The Film



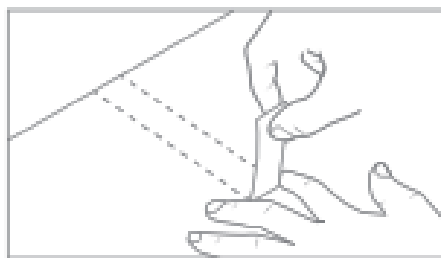
1. Wipe the screen with the cleaning kit;



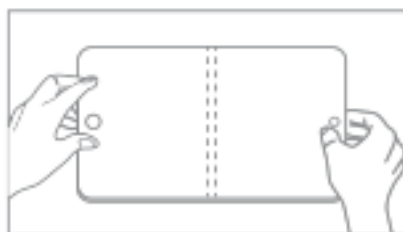
2. Tear off the outer frame of the film from the tearing position at the upper right corner of the front of the film;



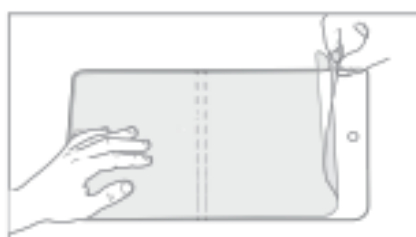
3. Place the film flatly. Roll down the bottom layer to release the protective film.



4. Remove the holes of film and tear off the middle auxiliary strip; (Please fix the film with your index and middle fingers.)



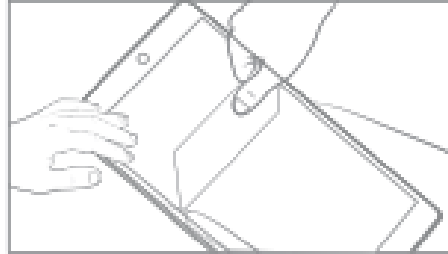
5. Place the film flatly on the screen and align the film to the phone precisely and press the auxiliary strip; (Be careful not to touch either end of the auxiliary strip)



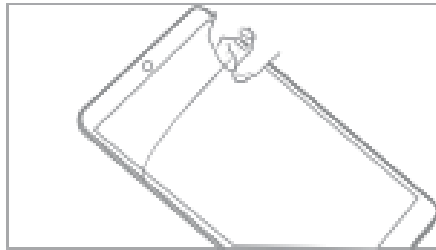
6. Lift the upper part of the film and then push forward slowly with a scratch card from the middle of the auxiliary strip;



7. Then lift the lower part of the film and pull back 2cm, then push forward slowly with a scratch card;



8. Use a cleaning cloth to smooth the curved surface if necessary;



9. Finally uncover the surface PET film and finish installing the film.

Product Specification	
Smart Operation Panel	6.0 inch color LCD capacitive screen
BT/FM/WIFI/GPS	802.11 b/Wireless LAN Support 2.4GWIFI
Input	100-240V 1.5A 50-60Hz
Output	24V 2.7A
Power	<40w
Size	86*159.1*11.5mm
Net Weight	151g
USB I/O	Type-C
Module Input	4 OV/1 7A

## Precautions



Press the power button to stop urgently during cutting.



Please don't move the driver manually when powered on to avoid damage to the machine.



Please don't touch or bump the blade against anything hard for it is sharp and fragile.



In order to ensure perfect cutting effect, it is suggested to replace the blade and the rubber strip every 500 times of cutting or 3 months of use.



Please shut down the machine normally through the App, and please don't unplug the power cable directly, for it may cause irreversible damage to the machine.



If you are a user beyond China, please scan the QR code to follow us in Facebook for more information.

**This device complies with part 15 of the FCC Rules. Operation is subject to the following two conditions:**

(1) This device may not cause harmful interference, and (2) this device must accept any interference received, including interference that may cause undesired operation. Any changes or modifications not expressly approved by the party responsible for compliance could void the user's authority to operate the equipment. This equipment has been tested and found to comply with the limits for a Class B digital device, pursuant to part 15 of the FCC Rules. These limits are designed to provide reasonable protection against harmful interference in a residential installation. This equipment generates, uses and can radiate radio frequency energy and, if not installed and used in accordance with the instructions, may cause harmful interference to radio communications. However, there is no guarantee that interference will not occur in a particular installation. If this equipment does cause harmful interference to radio or television reception, which can be determined by turning the equipment off and on, the user is encouraged to try to correct the interference by one or more of the following measures:

- Reorient or relocate the receiving antenna.
- Increase the separation between the equipment and receiver.
- Connect the equipment into an outlet on a circuit different from that to which the receiver is connected.
- Consult the dealer or an experienced radio/TV technician for help.

#### **FCC Radiation Exposure Statement**


This equipment complies with FCC radiation exposure limits set forth for an uncontrolled environment.

This transmitter must not be co-located or operating in conjunction with any other antenna or transmitter.

This equipment should be installed and operated with a minimum distance 20cm between the radiator & your body.

**Shenzhen Renqing Excellent Technology Co., Ltd.**

**Documents / Resources**

 Smart Operation Panel SOP1 User Manual	<a href="#"><u>rock space SOP1 Smart Operation Panel</u></a> [pdf] User Manual RQZY013, 2AUA9-RQZY013, 2AUA9RQZY013, SOP1, Smart Operation Panel, SOP1 Smart O peration Panel, Operation Panel
--	--