



## ROCK-SLIDE JK Step Slider Rocker Guards Instruction Manual

[Home](#) » [ROCK SLIDE](#) » ROCK-SLIDE JK Step Slider Rocker Guards Instruction Manual 

### ROCK-SLIDE JK Step Slider Rocker Guards



## Contents

[1 SPECIFICATION](#)

[2 Tools Required](#)

[3 Notes and Maintenance](#)

[4 INSTALLATION](#)

[INSTRUCTIONS](#)

[5 PRODUCT INFORMATION](#)

[6 Tech Support / General Support](#)

[7 Documents / Resources](#)

[7.1 References](#)

[8 Related Posts](#)

## SPECIFICATION



Description	Quantity
Rocker Guard Pair	2
<b><u>JK Model</u></b>	
5/16" SS Washer	20
5/16" SSBHB	
<b><u>JL Model</u></b>	
1/4" – 20 SS Wash	20
1/4" – 20 X 1" SSBHB	20
**SS—Stainless Steel	
**BHB—Button Head Bolt	

## Tools Required

Nutsert tool	3/16" allen wrench—JK Model
5/32" allen wrench— JL Model	17/32" Drill bit with driver (or 1/2") – JK Mod
3/8" Drill bit with driver – JL Model	**Small Dremel if using 1/2" bit

## Notes and Maintenance

Before you begin installation , read all instructions thoroughly.

Proper tools will improve the quality of installation and reduce the time required . No maintenance required on waterproof harness or water-resistant motors . If mud or dirt is built up on the steps , simply spray them off and let them air dry. Mild automotive detergent may be used to clean the product. Do not use dish detergent , abrasive cleaners , abrasive pads , wire brushes or other similar products that may damage the finish . Periodic inspection of all wires and connections should be performed to ensure there is no visible damage or loose connections. Refer to the last page of this manual for troubleshooting , warranty and product registration information.

## INSTALLATION INSTRUCTIONS

### Step 1

Line up the rocker guards on the side of the vehicle in the desired position.

Both the JK and JL rocker guards will install identically by drilling into the vehicle body with their appropriate hardware.



### Step 2

Using a small punch and hammer, tap lightly on the center of the hole to make a point so the drill bit does



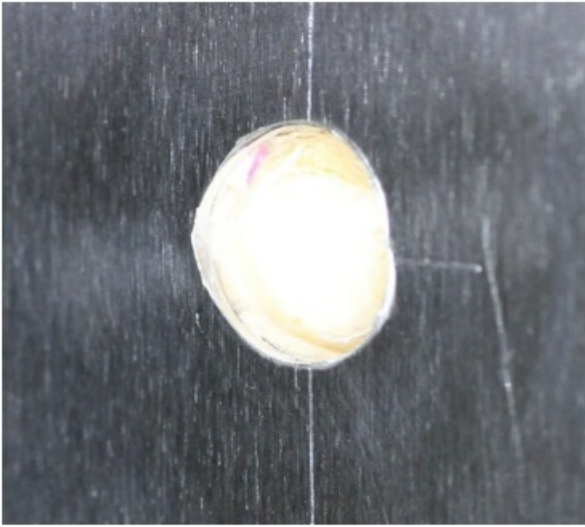
### Step 3

Drill a small pilot hole into the sheet metal. Increase the size in increments so you don't warp the sheet metal.

**JL**—3/8" drill bit.

**JK**—17/32" drill bit.



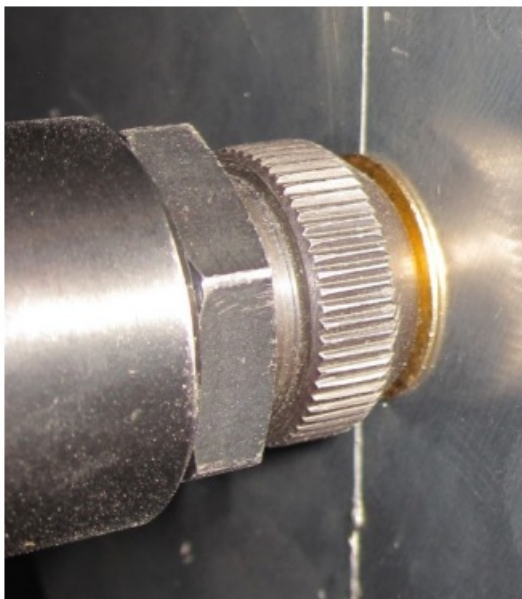
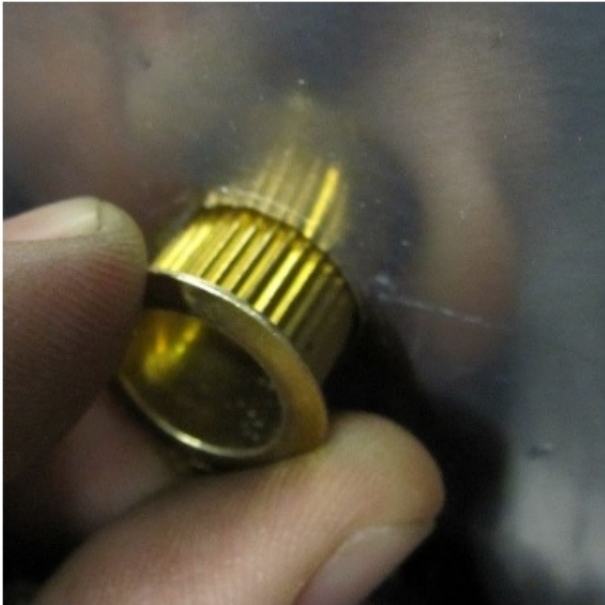


#### Step 4

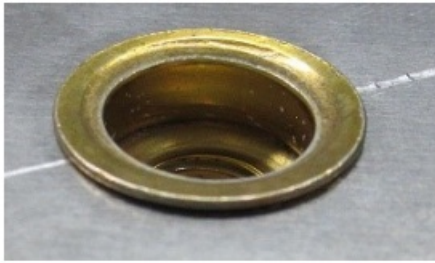
Install nutserts using a nutsert tool with appropriate mandrel.

**JL**—1/4" – 20

**JK**—5/16" – 18







### **Step 5**

Once the holes have been drilled and nutserts installed, simply bolt on the rocker guard to the body of the jeep. Repeat on the other side.

## **PRODUCT INFORMATION**

### **LIMITED LIFETIME WARRANTY FOR STRUCTURAL AND MECHANICAL COMPONENTS**

### **LIMITED TWELVE (12) MONTH WARRANTY FOR FINISH AND ELECTRICAL COMPONENTS**

Rock-Slide Engineering, LLC ("R-SE") warrants to the original purchaser that (a) the structural and mechanical components of the Step Sliders will be free of defects in material and workmanship for the lifetime of the Step Sliders (the "product"), and (b) the finish (powder coat) and the electrical components (including the motor) will be free of defects in material and workmanship for a period of twelve (12) months from the original date of purchase. This warranty applies only to the original retail purchaser. Warranty is void if product was not purchased directly from R-SE or from an authorized R-SE retailer or reseller. This warranty applies only with regard to the original installation of the product to the original vehicle. This warranty does not cover removal or reinstallation of the product.

To exercise this warranty and receive any warranty service, the original purchaser must provide R-SE with proof of purchase and date of purchase that is acceptable to R-SE, such as a copy of the original purchaser's purchase receipt. The original purchaser must return the defective product to R-SE along with a description of the problem, a copy of the original purchase receipt, the original bill of sale and all contact information (name, address, telephone number and email address). To begin the warranty process, the original purchaser must email R-SE's warranty department.

During this warranty term, and upon the original purchaser's valid exercise of this warranty, R-SE shall, at its option, repair or furnish a replacement product in the event the original product is deemed by R-SE to be defective. R-SE's sole liability shall be for repairing or replacing the product, but R-SE may refund the purchase price at its sole discretion and option. The original purchaser is responsible for prepayment of all shipping and/or transportation charges with respect to the exercise of this warranty. The product may change without notice. In the event of a product change, R-SE has no obligation to upgrade or modify any older generation product. THE WARRANTY SET FORTH HEREIN IS THE ONLY WARRANTY COVERING THE PRODUCT. NO OTHER WARRANTY EXISTS, EXPRESS OR IMPLIED, INCLUDING, WITHOUT LIMITATION, IMPLIED WARRANTIES OF MERCHANTABILITY AND/OR FITNESS FOR A PARTICULAR PURPOSE. No retailer, reseller, dealer, agent or employee is authorized to make any modifications, extensions, amendments or additions to this warranty.

This warranty shall be void in its entirety if R-SE determines that the product installation was modified, changed, altered, customized or in any way used other than as instructed. Installation of the product without strictly adhering to the installation instructions shall void this warranty. Installation must be on the proper vehicle or warranty is

void.

R-SE SHALL NOT BE LIABLE FOR SPECIAL, INDIRECT, INCIDENTAL OR CONSEQUENTIAL DAMAGES, UNDER ANY LEGAL THEORY AND/OR UNDER ANY CIRCUMSTANCE WHATSOEVER. IN ANY EVENT, ANY DAMAGES IN ANY SITUATION SHALL BE LIQUIDATED DAMAGES AND MAY NOT EXCEED THE RETAIL PRICE OF THE PRODUCT. R-SE SHALL NOT BE LIABLE FOR ANY LOSS, DAMAGE OR INJURY DIRECTLY OR INDIRECTLY ARISING FROM THE USE OF OR INABILITY TO DETERMINE THE USE OF THE PRODUCT. THE ORIGINAL PURCHASER IS RESPONSIBLE TO DETERMINE THE SUITABILITY OF THE PRODUCT FOR ITS INTENDED USE, PRIOR TO USING THE PRODUCT, AND THE ORIGINAL PURCHASER ASSUMES ALL RESPONSIBILITY AND RISK IN CONNECTION THEREWITH.

## Tech Support / General Support

435-752-4580

8 A.M.—5 P.M. MST

Have feedback, thoughts, or suggestions?

**Please email us!**

We would be happy to make our instructions easier to understand and value your feedback.

[Warranty@rockslideengineering.com](mailto:Warranty@rockslideengineering.com)

[ROCKSLIDEENGINEERING.COM](http://ROCKSLIDEENGINEERING.COM)


– NEED ASSISTANCE?

435.752.4580



---

## Documents / Resources

	<p><a href="#">ROCK-SLIDE JK Step Slider Rocker Guards</a> [pdf] Instruction Manual JK Step Slider Rocker Guards, JK, Step Slider Rocker Guards, Slider Rocker Guards, Rocker Guards</p>
---	--

## References

- [Home - Rock Slide Engineering](#)
- [User Manual](#)