

VRRP robustel App User Guide

[Home](#) » [robustel](#) » VRRP robustel App User Guide 



**App User Guide
VRRP**

Version: 1.0.2

Date: December 25, 2021

Copyright© Guangzhou Robustel Co., Ltd.
All Rights Reserved.

Contents

- [1 Revision History](#)
- [2 Overview](#)
- [3 App Installation](#)
- [4 Parameters Description](#)
- [5 Documents / Resources](#)
 - [5.1 References](#)
- [6 Related Posts](#)

Revision History

Updates between document versions are cumulative. Therefore, the latest document version contains all updates made to previous versions.

Release Date	App Version	Doc Version	Details
June 6, 2016	2.0.0	v.1.0.0	First Release
June 29, 2018	2.0.0	v.1.0.1	Revised the company name
December 25, 2021	2.0.0	v.1.0.2	Revised the company name Deleted the document status: Confidential

Overview

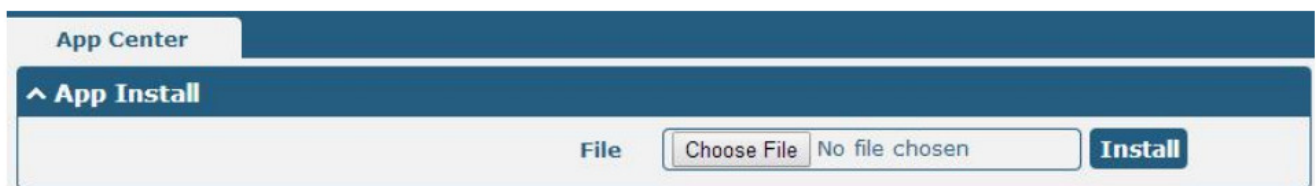
VRRP (Virtual Router Redundancy Protocol) is a fault-tolerant protocol. VRRP protocol can help to constitute a router backup group in a LAN, the VRRP router is equivalent to a virtual router. A host in LAN only needs to know this virtual router's IP address and doesn't need to know the IP address of the specific router. When setting the host's default gateway is the virtual router's virtual IP address, the host can use the virtual gateway to communicate with the external network. VRRP function is an App that needs to install into the router in the System->App Center unit.

App Installation

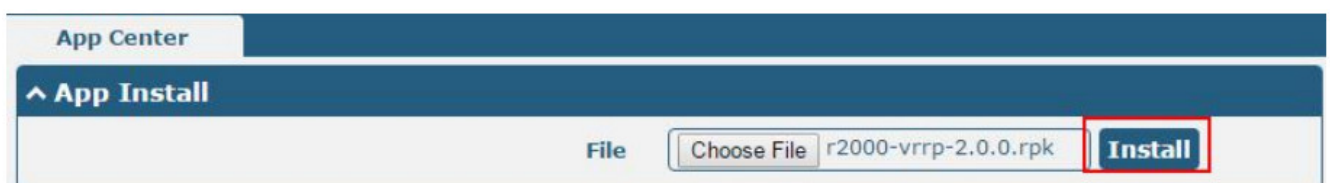
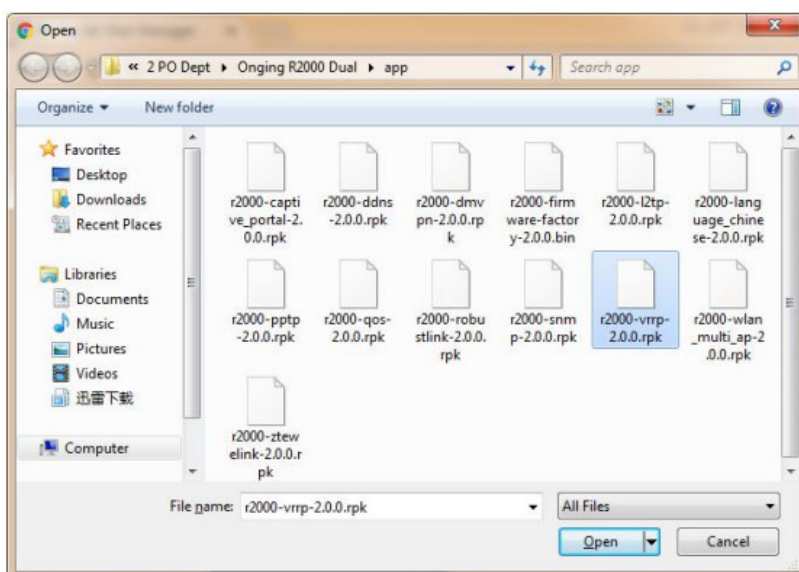
2.1 Installation

Path System->App

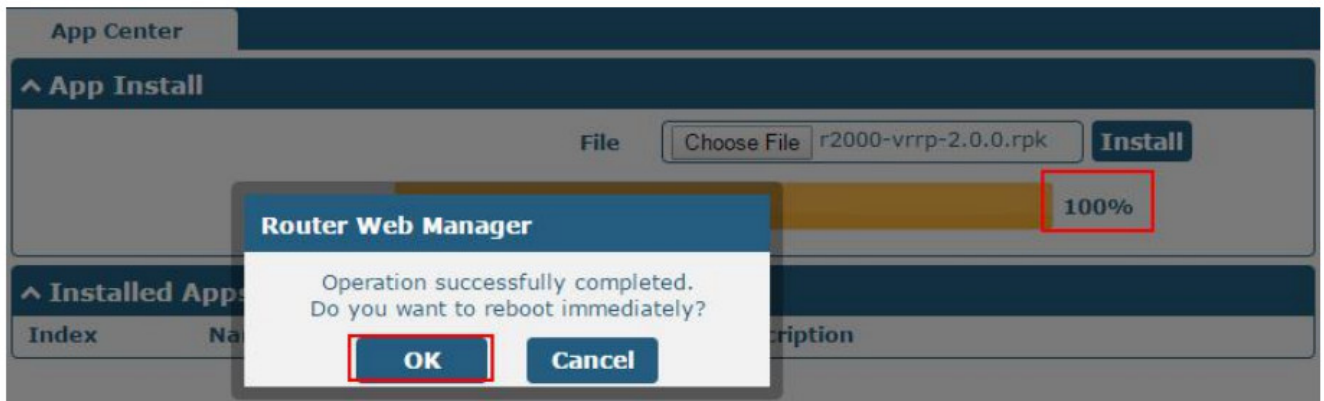
1. Please place VRRP App .rpk file (e.g. r2000-vrrp-2.0.0.rpk) into a free disk of PC. And then log in router configuration page; go to System->App as the following screenshot show



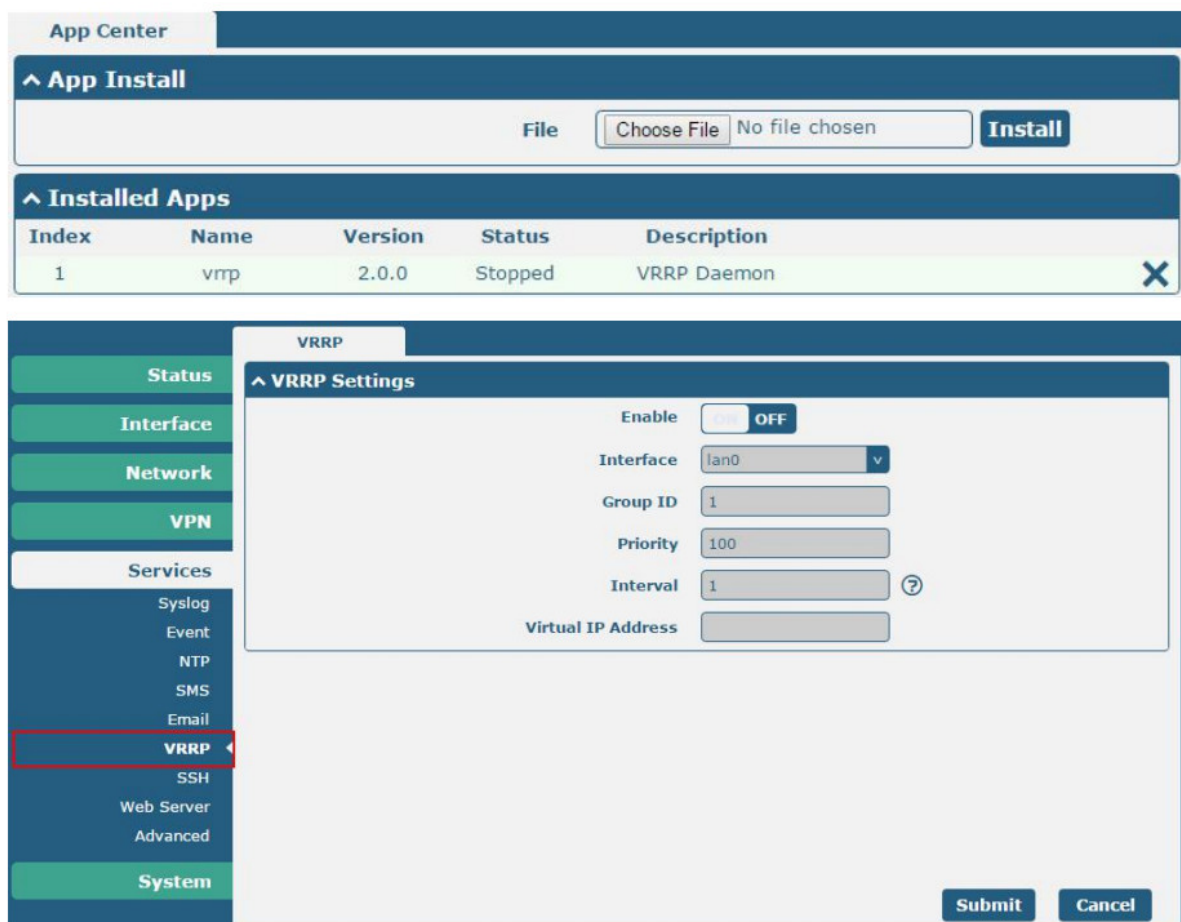
2. Click the "Choose File" button, select VRRP App .rpk file from the PC, then click the "Install" button on the router configuration page.



3. When the rate of installation progress reaches 100%, the system will pop up a reboot router reminder window. Please click “OK” to make the router reboot.



4. After the router is powered on again, log in to the configuration page, VRRP will be included in App Center’s “Installed Apps” list, and the function configuration will display in the Services part.



2.2 Uninstallation

Path: System->App Center

1. Go to “Installed Apps”, find VRRP App and then click “ X”.

App Center

^ App Install

File
No file chosen

^ Installed Apps

Index	Name	Version	Status	Description	
1	vrrp	2.0.0	Stopped	VRRP Daemon	

- Click "OK" in the router reboot reminder popup window. When the router finish restarting, VRRP had been uninstalled.

Router Web Manager

Operation successfully completed.
Do you want to reboot immediately?

App Center

^ App Install

File
No file chosen

^ Installed Apps

Index	Name	Version	Status	Description
-------	------	---------	--------	-------------


Parameters Description

VRRP

^ VRRP Settings

Enable

Interface

lan0 


Group ID

1

Priority

100

Interval

1 

Virtual IP Address

VRRP		
Item	Description	Default
Enable	Click to enable VRRP protocol.	OFF
Interface	Select from "lan0" and "lan1".	lan()
Group ID	Specify which VRRP group of this router belongs to.	1
Priority	Enter the priority value from 1 to 255. The larger value has a higher priority.	120
Interval	The interval that the master router sends VRRP packets to backup routers.	5
Virtual IP Address	A virtual IP address is shared among the routers, with one designated as the master router and the others as backups. In case the master fails, the virtual IP address is mapped to a backup router's IP address. (This backup becomes the master router)	192.168.0.1

Guangzhou Robustel Co., Ltd.


Add: 501, Building 2, No. 63, Yong'an Avenue,
Huangpu District, Guangzhou, China 510660

Tel: 86-20-82321505

Email: support@robustel.com

Web: www.robustel.com

Documents / Resources

 <p>App User Guide VRRP</p>	<p>robustel VRRP robustel App [pdf] User Guide VRRP robustel, App, VRRP robustel App</p>
--	--

References

- [4G/LTE/5G/Cellular Routers, Gateways and Modems for Industrial IoT - Robustel](#)